

## Technical Report

### Closing Brief

Benchmark indices in yesterday's session halted the 3-day winning streak after North Korea tested its hydrogen bomb. It was the 6th nuclear test by the country and by far it is the most powerful one which jittered the global markets. Nifty finally ended at 9912.85 levels down by -61.55 points or -0.62%

### Technical Build up

- ❖ Bearish candle with decrease in volume
- ❖ Buy crossover in oscillators.
- ❖ Lower band of Bollinger exist at 9696
- ❖ Crucial moving average of 20/50 SMA are at 9879 and 9837
- ❖ 200 SMA trend deciding level exist at 9098

### Outlook for the day

Indian Equity market lost over half a percent amid volatility, citing weak global cues. The news of North Korea's latest nuclear test rattled market across the globe, including ours. US President Donald Trump warned that any nation doing business with the regime would have economic sanctions and trade embargoes slapped on it. On the technical front, Nifty made bearish engulfing pattern. It has also broken previous day's low of 9910 which appears to be in line with a larger corrective pattern indicating a rangebound move, going forward, preferably in the zone of 10000-9700 levels. Nifty too has retraced around 62% of entire fall from the highs of 10137-9685 levels suggesting either limited upside or end of pullback attempt. During the day immediate support is placed around 9862 while the next support is placed around 9812. On the higher side, the immediate resistance is placed around 9962 and the next resistance is 10000. On the option front maximum Put OI is at 9700 followed by 9800 strike while maximum Call OI is at 10000 followed by 10100 strike

### Technical & Derivative Report

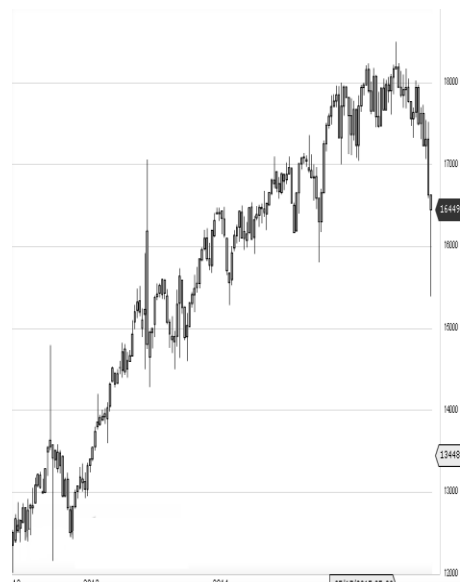
World Indices	LTP	Daily Ch(Pts)	Daily Ch(%)
Dow Jones	21987	39	0.18
Nasdaq	6435	6	0.10
S&P 500	2476	4	0.20
FTSE 100	7411	-27	-0.36
DAX	12102	-40	-0.33
Hang Seng	27762	21	0.08
Nikkei	19445	-62	-0.32
Sensex	31702	-189	-0.60
Nifty	9912	-61	-0.62

Commodity /Forex	LTP	Daily 1.1Ch(Pts)	Daily Ch(%)
Gold (\$/Oz)	1340.20	9.80	0.74
Silver (\$/Oz)	17.96	0.14	0.81
Copper(USD/lb.)	316.25	4.45	1.43
Brent Crude(USD/bbl)	52.16	-0.18	-0.34
USD/INR	64.05	0.02	0.03
USD/YEN	109.53	-0.19	-0.17
USD/EUR	1.1902	0.0006	0.05

Support/Resistance levels for Indian Equity Indices					
	S1	S2	CMP	R1	R2
Sensex	31535	31370	31702	31870	31995
Nifty	9862	9812	9912	9962	10000
Nifty (Fut)	9877	9827	9927	9977	10015

Pivot Level	
Sensex	31731
Nifty	9920

**US:** US Market was closed due to labour day. Technically DJIA is presently trading at the 5th leg through Elliot wave count with negative divergence in oscillators.



Increase in OI with Increase in Price (Long Buildup)						Increase in OI with Decrease in Price (Short Buildup)					
Symbol	Prev OI	Curr OI	OI Chg (%)	Curr Pr.	Pr.Chg (%)	Symbol	Prev OI	Curr OI	OI Chg (%)	Curr Pr.	Pr.Chg (%)
OIL	2222946	2803042	26.1	305.45	4.5	JSWENE	6233050	7662750			
MCDO						RGY	0	0	22.9	66.9	[0.5]
WELL-N	1626750	1868250	14.9	2583	0.9		1697250	1912200			
OFSS	54600	62400	14.3	3609	3.6	IOC	0	0	12.7	430.95	[4.5]
RELIANC	1457000	1655750				ACC	1226400	1347200	9.9	1783.1	[2.3]
E	0	0	13.6	1615	0.1	CIPLA	7238000	7929000	9.6	565.8	[1.1]
PAGEIN							3222000	3498000			
D	22650	25700	13.5	18100	0.4	RECLTD	0	0	8.6	162.7	[3.1]

Nifty declined by 0.62% with Nifty future added 5.4 lakh shares in open interest and stock future shaded 393.8 Lakh shares in open interest.

- Nifty PCR decreased to 1.30 from 1.38
- Total Nifty Calls added 43.0 lakh shares in open interest.
- Total Nifty Puts added 14.7 lakh shares in open interest.
- Maximum open interest (Nifty) in Calls for July series is at 10000 and 9700 put.
- FII's sold net Rs.873.91 Cr(provisional), while DIIs sold net Rs.49.1 Cr in cash market.
- FII bought net Rs.781.76 Cr in F&O
- Securities in Ban Period: IBREALEST & JSWENERGY

## Nifty Tracker

PARTICULARS	02/09/2017	01/09/2017	31/08/2017	30/08/2017
Spot	9912.85	9974.4	9917.9	9884.4
% Change in Spot	-0.62%	0.57%	0.34%	0.90%
Nifty(FUT) Sep	9927.65	10007.3	9937.2	9912.45
Nifty(FUT) Sep Vol.	131660	88747	136948	64270
Nifty(FUT) Sep - OI	17458725	16912650	15869775	9650775
Nifty(FUT) Oct	9955.75	10034.2	9963.35	0
Nifty(FUT) Oct Vol.	5179	3655	3160	0
Nifty(FUT) Oct - OI	554025	574650	541050	0

## Trade Statistics for 02/09/2017

PARTICULARS	NO. OF CONTRACTS	TURNOVER (RS. CR.)	PUT CALL RATIO
NSE Index Futures	2,03,377	16638	-
NSE Stock Futures	6,71,186	51926	-
NSE Index Options	40,63,151	3,50,274.32	-
NSE Stock Options	5,44,630	51083	0.55
NSE F&O Total Turnover	54,82,344	469,922	1.01
NSE Cash Turnover	-	24,830.67	-
BSE Cash Turnover	-	3396.73	-
Total Turnover	-	498150	-

## FII Corner (F&O)

FII NET BUYING/SELLING & CHANGE IN OPEN INTEREST (Cr. Rupee)						
PARTICULARS	02/09/2017		01/09/2017		31/08/2017	
	Net Buying /Selling	Change In Open interest	Net Buying /Selling	Change In Open interest	Net Buying /Selling	Change In Open interest
Index Future	-470	1162	294	814	1185	-16166
Index option	999	1453	1922	4386	1112	-31457
Stock Future	214	-6	93	1433	-81	-6754
Stock option	38	507	11	2286	171	-11250
Total	781	3116	2320	8918	2387	-65627

## Market Open Interest

ADDITION/REDUCTION IN MARKET OPEN INTEREST					
Contracts	02/09/2017	01/09/2017	31/08/2017	30/08/2017	29/08/2017
Index Futures	386	-11884	1596	674	-283
Index Options	-234	-14569	5829	2452	-1649
Stock Futures	13984	-76962	11494	1535	2863
Stock Options	1957	-18183	217	-248	-4
F&O Total	16093	-121598	19135.36	4413.04	927.04

## Nifty Option Open Interest Statistics

NIFTY OPTIONS HIGHEST ADDITION IN OPEN INTEREST						
Expiry	Strike	Option Type	Settlement Price	Volume	Open Interest	Change In OI
28-Sep-17	10000	CE	83.8	223398	4468950	961350
28-Sep-17	9900	CE	134.35	101291	2241075	685575
28-Sep-17	10100	CE	45.7	152442	3260850	674250
28-Sep-17	10200	CE	23.15	127488	2749650	442875
28-Sep-17	9700	PE	53.75	159467	4467000	439500
28-Sep-17	10050	CE	62.5	17277	389400	312375
28-Sep-17	9600	PE	37.65	110401	3291975	262575
28-Sep-17	9000	PE	6.4	22464	2210550	247275
28-Sep-17	10400	CE	5.25	25995	1327275	207300
28-Sep-17	10300	CE	11	68436	1863525	184575

NIFTY OPTIONS HIGHEST REDUCTION IN OPEN INTEREST						
Expiry	Strike	Option Type	Settlement Price	Volume	Open Interest	Change In OI
28-Sep-17	10000	PE	152.95	91286	1846725	-289650
28-Sep-17	9900	PE	107.9	219939	3311175	-220725
28-Sep-17	10600	CE	1.9	7943	537900	-69075
28-Sep-17	9800	PE	76	198628	3663600	-57300
28-Sep-17	10200	PE	285.3	7588	824700	-52275
26-Oct-17	10400	CE	26.45	4924	321900	-49425
28-Sep-17	10100	PE	213.8	16822	867150	-45825
28-Sep-17	9950	PE	129.35	15580	174675	-42450
28-Sep-17	9500	CE	450.5	2079	522150	-41850
26-Oct-17	10200	CE	68.5	5781	368925	-35100

## Stock Option Open Interest Statistics

STOCK OPTIONS WITH HIGHEST ADDITION IN OPEN INTEREST							
Symbol	Expiry	Strike	Option Type	Settl. Price	Volume	Open Interest	Change in OI
GMRINFRA	28-Sep-17	20	CE	0.2	261	14535000	6255000
RELCAPITAL	28-Sep-17	900	CE	0	26096	7156500	5347500
RELCAPITAL	28-Sep-17	860	CE	0	21518	5383500	4297500
RELCAPITAL	28-Sep-17	880	CE	0	23022	4833000	3846000
RELCAPITAL	28-Sep-17	840	CE	0	13881	3885000	3498000
RELCAPITAL	28-Sep-17	820	CE	0	9246	3463500	3255000
RELCAPITAL	28-Sep-17	800	PE	0	25034	4308000	3237000
JPASSOCIAT	28-Sep-17	25	CE	1.6	214	11016000	2652000
RELCAPITAL	28-Sep-17	920	CE	0	10665	3804000	2628000
TV18BRDCST	28-Sep-17	45	CE	0.7	855	2754000	2295000

STOCK OPTIONS WITH HIGHEST REDUCTION IN OPEN INTEREST							
Symbol	Expiry	Strike	Option Type	Settl. Price	Volume	Open Int.	Change in OI
ASHOKLEY	28-Sep-17	110	CE	6.3	333	1442000	-497000
IDEA	28-Sep-17	90	PE	4.95	293	693000	-427000
COALINDIA	28-Sep-17	240	CE	9.8	1064	496400	-367200
FEDERALBNK	28-Sep-17	115	CE	2.2	470	2772000	-319000
ONGC	28-Sep-17	160	CE	4.75	567	1785000	-288750
IDEA	28-Sep-17	95	PE	9.15	87	294000	-280000
RELCAPITAL	28-Sep-17	860	PE	0	3719	132000	-238500
SOUTHBANK	28-Sep-17	25	PE	0.15	38	828525	-231987
IBREALEST	28-Sep-17	180	PE	0.7	22	700000	-210000
RELCAPITAL	28-Sep-17	840	PE	0	9614	331500	-210000

## Research Team

Name	Designation	Email ID	Contact No.
Paras Bothra	President Equity Research	paras@ashikagroup.com	+91 22 6611 1704
Sanjeev Jain	AVP Equity Research	sanjeev.j@ashikagroup.com	+91 33 4036 0650
Krishna Kumar Agarwal	Equity Research Analyst	krishna.a@ashikagroup.com	+91 33 4036 0646
Partha Mazumder	Equity Research Analyst	partha.m@ashikagroup.com	+91 33 4036 0647
Arijit Malakar	Equity Research Analyst	amalakar@ashikagroup.com	+91 33 4036 0644
Kapil Jagasia	Equity Research Analyst	kapil.j@ashikagroup.com	+91 22 6611 1715
Tirthankar Das	Technical & Derivative Analyst	tirthankar.d@ashikagroup.com	+91 33 4036 0645

Ashika Stock Broking Limited ("ASBL") or Research Entity has started its journey in the year 1994 and is engaged in the business of broking services, depository services, distributor of financial products (Mutual fund, IPO & Bonds). This research report has been prepared and distributed by ASBL in the sole capacity of a Research Analyst (Reg No. INH00000206) of SEBI (Research Analyst) Regulations 2014. ASBL is a wholly owned subsidiary of Ashika Global Securities (P) Ltd., a RBI registered non-deposit taking NBFC Company. Ashika group (details is enumerated on our website [www.ashikagroup.com](http://www.ashikagroup.com)) is an integrated financial service provider inter alia engaged in the business of Investment Banking, Corporate Lending, Commodity Broking, Debt Syndication & Other Advisory Services.

There were no significant and material disciplinary actions against ASBL taken by any regulatory authority during last three years.

### Disclosure

ASBL or its associates, its Research Analysts (including their relatives) may have financial interest in the subject company(ies). However, the said financial interest is not limited to having an open stock market position in /acting as advisor to /having a loan transaction with the subject company(ies) apart from registration as clients.

- 1) ASBL or its Research Analysts (including their relatives) do not have any actual / beneficial ownership of 1% or more of securities of the subject company(ies) at the end of the month immediately preceding the date of publication of this report or date of the public appearance. However ASBL's associates may have actual / beneficial ownership of 1% or more of securities of the subject company(ies).
- 2) ASBL or their Research Analysts (including their relatives) do not have any other material conflict of interest at the time of publication of this research report or date of the public appearance. However ASBL's associates might have an actual / potential conflict of interest (other than ownership).
- 3) ASBL or its associates may have received compensation for investment banking, merchant banking, and brokerage services and for other products and services from the subject companies during the preceding 12 months. However, ASBL or its associates or its Research analysts (forming part of Research Desk) have not received any compensation or other benefits from the subject companies or third parties in connection with the research report. Moreover, Research Analysts have not received any compensation from the companies mentioned herein in the past twelve months.
- 4) ASBL or their Research Analysts have not managed or co-managed public offering of securities for the subject company(ies) in the past twelve months. However ASBL's associates may have managed or co-managed public offering of securities for the subject company(ies) in the past twelve months.
- 5) Research Analysts have not served as an officer, director or employee of the companies mentioned in the report.
- 6) Neither ASBL nor its Research Analysts have been engaged in market making activity for the companies mentioned in the report.

### Disclaimer

The research recommendation and information herein are solely for the personal information of the authorized recipient and does not construe to be an offer documents or any investment, legal or taxation advice or solicitation of any action based upon it. This report is not for public distribution or use by any person or entity, where such distribution, publication, availability or use would be contrary to law, regulation or subject to any registration or licensing requirement. We will not treat recipients as customer by virtue of their receiving this report. The report is based upon the information obtained from public sources that we consider reliable, but we do not guarantee its accuracy or completeness. ASBL shall not be in anyways responsible for any loss or damage that may arise to any such person from any inadvertent error in the information contained in this report. The recipients of this report should rely on their own investigations.