

Technical Report

Closing Brief

Benchmark Indices in previous session ended at record highs as PSU Banks continued their rally and Nifty hit a fresh all time high of 10461.40 levels. Nifty ended around 10452.50 levels up by 28.70 points or 0.28%.

Technical Build up

- ❖ Bullish candle with increase in volume
- ❖ Buy crossover in oscillators.
- ❖ Upper band of Bollinger exist at 10518
- ❖ Crucial moving average of 20/50 SMA are at 10221 and 10056
- ❖ 200 SMA trend deciding level exist at 9509

Outlook for the day

Indian Equity market ended with modest gains amid volatility, thanks to sustained buying in selective index majors, positive services industry activity data, capital inflows and positive demand conditions according to a monthly Purchasing Managers' Index survey lead the Indices to cross new milestones. On the technical front, Nifty formed a Hanging Man bearish candle which is a reversal pattern formed at the end of an uptrend. Although further confirmation in form of breach below the previous day low of 10400 need to be made. Nifty now has to continue to hold above 10380-10400 zones to witness an up move towards 10550 and even higher levels. The underlying trend continues to remain positive as Nifty has been trading above the 50 DEMA followed by higher top-higher bottom formation on weekly chart. On the options front, maximum Put open interest stood at strike price 10,000 followed by 10,200, while maximum Call open interest was at 10,500 followed by 10,400. Call writing remained intact at 10,500, which acted as an immediate barrier.

Technical & Derivative Report

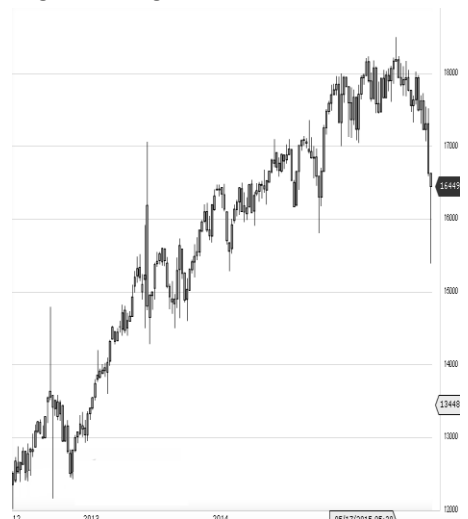
World Indices	LTP	Daily Ch(Pts)	Daily Ch(%)
Dow Jones	23539	22	0.10
Nasdaq	6764	49	0.74
S&P 500	2587	7	0.31
FTSE 100	7560	5	0.07
DAX	13478	37	0.28
Hang Seng	28251	-352	-1.23
Nikkei	22589	50	0.22
Sensex	33685	112	0.33
Nifty	10452	28	0.28

Commodity /Forex	LTP	Daily 1.1Ch(Pts)	Daily Ch(%)
Gold (\$/Oz)	1268.10	-1.10	-0.09
Silver (\$/Oz)	16.83	-	-0.02
Copper(USD/lb.)	313.00	1.25	0.40
Brent			
Crude(USD/bbl)	62.33	0.26	0.42
USD/INR	64.54	-0.06	-0.10
USD/YEN	114.60	0.53	0.46
USD/EUR	1.1607	-0.0001	-0.01

Support/Resistance levels for Indian Equity Indices					
	S1	S2	CMP	R1	R2
Sensex	33510	33345	33685	33910	33175
Nifty	10400	10350	10452	10520	10600
Nifty (Fut)	10432	10385	10486	10555	10635

Pivot Level	
Sensex	33650
Nifty	10439

US: US Market closed at record highs on Friday on the back of a sharp rally in Apple shares. Qualcomm also jumped as Broadcom considers acquiring the chipmaker. Technically DJIA is presently trading at the 5th leg through Elliot wave count with negative divergence in oscillators.



Increase in OI with Increase in Price (Long Buildup)

Symbol	Prev OI	Curr OI	OI Chg (%)	Curr Pr.	Pr.Chg (%)
ARVIND	5416000	6982000	28.9	444.5	8.7
UJIVAN	6897600	8864400	28.5	375.45	8.6
UBL	1893500	2352000	24.2	1135.05	4.4
NESTLEI					
ND	93600	108200	15.6	7480.05	2.2
	6056400	6973200			
SAIL	0	0	15.1	86.75	8.4

Increase in OI with Decrease in Price (Short Buildup)

Symbol	Prev OI	Curr OI	OI Chg (%)	Curr Pr.	Pr.Chg (%)
TORNTP					
HARM	565200	943200	66.9	1325	[0.7]
POWER	2457600	2845600			
GRID	0	0	15.8	211.45	[2.4]
TATAPO	3588300	4066200			
WER	0	0	13.3	84.9	[0.6]
KOTAKB					
ANK	7976000	8981600	12.6	1020.55	[0.5]
	4750200	5335800			
PFC	0	0	12.3	136.2	[3.8]

Nifty gained by 0.28% with Nifty future added 6.3 lakh shares in open interest and stock future added 819.0 Lakh shares in open interest.

- Nifty PCR increased to 1.54 from 1.52
- Total Nifty Calls added 9.5 lakh shares in open interest.
- Total Nifty Puts added 27.7 lakh shares in open interest.
- Maximum open interest (Nifty) in Calls for Oct series is at 10500 and 10000 put.
- FII's sold net Rs.9690.84 Cr(provisional), while DIIs bought net Rs.33.41 Cr in cash market.
- FII bought net Rs.224.28 Cr in F&O
- Securities in Ban Period: HDIL, IBREALEST, JSWENERGY & RCOM

Nifty Tracker

PARTICULARS	03/11/2017	02/11/2017	01/11/2017	31/10/2017
Spot	10452.5	10423.8	10440.5	10335.3
% Change in Spot	0.28%	-0.16%	1.02%	-0.27%
Nifty(FUT) Nov	10486.8	10455	10477.3	10368.5
Nifty(FUT) Nov Vol.	73176	67168	93341	61583
Nifty(FUT) Nov - OI	25954575	25389300	24323625	23742150
Nifty(FUT) Dec	10521.7	10496.2	10516.3	10406.2
Nifty(FUT) Dec Vol.	3143	3056	5034	1886
Nifty(FUT) Dec - OI	1090650	1035675	1036575	898950

Trade Statistics for 03/11/2017

PARTICULARS	NO. OF CONTRACTS	TURNOVER (RS. CR.)	PUT CALL RATIO
NSE Index Futures	1,36,232	12108	-
NSE Stock Futures	7,91,777	58830	-
NSE Index Options	29,24,604	2,73,343.95	-
NSE Stock Options	4,95,898	38693	0.45
NSE F&O Total Turnover	43,48,511	382,975	0.88
NSE Cash Turnover	-	34,160.95	-
BSE Cash Turnover	-	15,285.99	-
Total Turnover	-	432422	-

FII Corner (F&O)

FII NET BUYING/SELLING & CHANGE IN OPEN INTEREST (Cr. Rupee)						
PARTICULARS	03/11/2017		02/11/2017		01/11/2017	
	Net Buying /Selling	Change In Open interest	Net Buying /Selling	Change In Open interest	Net Buying /Selling	Change In Open interest
Index Future	-418	835	-760	962	-49	1570
Index option	598	4152	3574	289	215	4298
Stock Future	12	895	-333	665	225	1699
Stock option	33	336	63	439	0	493
Total	225	6218	2544	2355	391	8061

Market Open Interest

ADDITION/REDUCTION IN MARKET OPEN INTEREST					
Contracts	03/11/2017	02/11/2017	01/11/2017	31/10/2017	30/10/2017
Index Futures	1149	933	2084	189	850
Index Options	2218	1617	2543	2560	2838
Stock Futures	-29415	22643	13166	5374	12148
Stock Options	970	932	1493	1416	2567
F&O Total	-25078	26125	19286.6	9538.53	18402.91

Nifty Option Open Interest Statistics

NIFTY OPTIONS HIGHEST ADDITION IN OPEN INTEREST						
Expiry	Strike	Option Type	Settlement Price	Volume	Open Interest	Change In OI
30-Nov-17	10000	PE	23.7	53301	6222000	884400
30-Nov-17	10800	CE	12.35	47846	2069775	679650
30-Nov-17	10400	PE	84.05	117526	3438375	548925
30-Nov-17	10300	PE	58.8	81639	4674750	253575
30-Nov-17	10600	CE	57.5	86199	2543250	199950
30-Nov-17	10450	PE	100.55	10679	392775	166575
30-Nov-17	11500	CE	0.65	12470	818175	153675
30-Nov-17	10200	PE	42.6	71358	5257425	142650
30-Nov-17	10500	PE	119.8	47981	1402950	141375
28-Dec-17	9600	PE	22.65	2941	872225	90825

NIFTY OPTIONS HIGHEST REDUCTION IN OPEN INTEREST						
Expiry	Strike	Option Type	Settlement Price	Volume	Open Interest	Change In OI
30-Nov-17	10500	CE	103.2	132082	3056175	-180225
30-Nov-17	9500	PE	5.6	6335	1409400	-99600
30-Nov-17	9500	CE	977.05	910	548175	-48375
28-Dec-17	10000	CE	571.5	899	2203575	-43425
28-Dec-17	9900	PE	42.95	2889	701625	-36450
25-Jun-20	10000	PE	405.45	579	223275	-34425
28-Dec-17	9800	PE	34.45	3495	425325	-31500
30-Nov-17	10700	CE	28.35	59469	2570100	-30675
30-Nov-17	9000	PE	2.5	2021	899550	-30075
30-Nov-17	10100	CE	407.6	1457	906450	-27675

Stock Option Open Interest Statistics

STOCK OPTIONS WITH HIGHEST ADDITION IN OPEN INTEREST							
Symbol	Expiry	Strike	Option Type	Settl. Price	Volume	Open Interest	Change in OI
SOUTHBANK	30-Nov-17	35	CE	0.45	256	8981211	2353011
SAIL	30-Nov-17	95	CE	2.2	887	2064000	1968000
GMRINFRA	30-Nov-17	20	CE	0.8	710	22905000	1710000
SUZLON	30-Nov-17	20	CE	0.15	491	24720000	1620000
TATAPOWER	30-Nov-17	90	CE	1.35	2379	5049000	1539000
POWERGRID	30-Nov-17	220	CE	2.55	1894	3408000	1528000
SAIL	30-Nov-17	85	PE	4.05	320	1404000	1128000
SAIL	30-Nov-17	80	PE	2.25	698	2940000	1116000
PFC	30-Nov-17	160	CE	1.05	867	2262000	1110000
GMRINFRA	30-Nov-17	25	CE	0.15	230	8055000	1035000

STOCK OPTIONS WITH HIGHEST REDUCTION IN OPEN INTEREST							
Symbol	Expiry	Strike	Option Type	Settl. Price	Volume	Open Int.	Change in OI
SAIL	30-Nov-17	70	CE	17.1	169	2712000	-1596000
ASHOKLEY	30-Nov-17	130	CE	3.05	714	2898000	-1253000
SAIL	30-Nov-17	85	CE	5.85	1667	3396000	-852000
SAIL	30-Nov-17	80	CE	9	498	2856000	-816000
BHEL	30-Nov-17	100	CE	5.75	663	2257500	-690000
JISLJALEQS	30-Nov-17	110	CE	5.65	603	1422000	-585000
ONGC	30-Nov-17	190	CE	6.6	886	1766250	-585000
ANDHRABANK	30-Nov-17	75	CE	1.1	369	1250000	-510000
YESBANK	30-Nov-17	320	CE	13.35	1046	2791250	-420000
SAIL	30-Nov-17	70	PE	0.6	661	3324000	-408000

Research Team

Name	Designation	Email ID	Contact No.
Paras Bothra	President Equity Research	paras@ashikagroup.com	+91 22 6611 1704
Krishna Kumar Agarwal	Equity Research Analyst	krishna.a@ashikagroup.com	+91 33 4036 0646
Partha Mazumder	Equity Research Analyst	partha.m@ashikagroup.com	+91 33 4036 0647
Arijit Malakar	Equity Research Analyst	amalakar@ashikagroup.com	+91 33 4036 0644
Kapil Jagasia	Equity Research Analyst	kapil.j@ashikagroup.com	+91 22 6611 1715
Tirthankar Das	Technical & Derivative Analyst	tirthankar.d@ashikagroup.com	+91 33 4036 0645

Ashika Stock Broking Limited ("ASBL") or Research Entity has started its journey in the year 1994 and is engaged in the business of broking services, depository services, distributor of financial products (Mutual fund, IPO & Bonds). This research report has been prepared and distributed by ASBL in the sole capacity of a Research Analyst (Reg No. INH00000206) of SEBI (Research Analyst) Regulations 2014. ASBL is a wholly owned subsidiary of Ashika Global Securities (P) Ltd., a RBI registered non-deposit taking NBFC Company. Ashika group (details is enumerated on our website www.ashikagroup.com) is an integrated financial service provider inter alia engaged in the business of Investment Banking, Corporate Lending, Commodity Broking, Debt Syndication & Other Advisory Services.

There were no significant and material disciplinary actions against ASBL taken by any regulatory authority during last three years.

Disclosure

ASBL or its associates, its Research Analysts (including their relatives) may have financial interest in the subject company(ies). However, the said financial interest is not limited to having an open stock market position in /acting as advisor to /having a loan transaction with the subject company(ies) apart from registration as clients.

- 1) ASBL or its Research Analysts (including their relatives) do not have any actual / beneficial ownership of 1% or more of securities of the subject company(ies) at the end of the month immediately preceding the date of publication of this report or date of the public appearance. However ASBL's associates may have actual / beneficial ownership of 1% or more of securities of the subject company(ies).
- 2) ASBL or their Research Analysts (including their relatives) do not have any other material conflict of interest at the time of publication of this research report or date of the public appearance. However ASBL's associates might have an actual / potential conflict of interest (other than ownership).
- 3) ASBL or its associates may have received compensation for investment banking, merchant banking, and brokerage services and for other products and services from the subject companies during the preceding 12 months. However, ASBL or its associates or its Research analysts (forming part of Research Desk) have not received any compensation or other benefits from the subject companies or third parties in connection with the research report. Moreover, Research Analysts have not received any compensation from the companies mentioned herein in the past twelve months.
- 4) ASBL or their Research Analysts have not managed or co-managed public offering of securities for the subject company(ies) in the past twelve months. However ASBL's associates may have managed or co-managed public offering of securities for the subject company(ies) in the past twelve months.
- 5) Research Analysts have not served as an officer, director or employee of the companies mentioned in the report.
- 6) Neither ASBL nor its Research Analysts have been engaged in market making activity for the companies mentioned in the report.

Disclaimer

The research recommendation and information herein are solely for the personal information of the authorized recipient and does not construe to be an offer documents or any investment, legal or taxation advice or solicitation of any action based upon it. This report is not for public distribution or use by any person or entity, where such distribution, publication, availability or use would be contrary to law, regulation or subject to any registration or licensing requirement. We will not treat recipients as customer by virtue of their receiving this report. The report is based upon the information obtained from public sources that we consider reliable, but we do not guarantee its accuracy or completeness. ASBL shall not be in anyways responsible for any loss or damage that may arise to any such person from any inadvertent error in the information contained in this report. The recipients of this report should rely on their own investigations.