

# Technical Report

## Closing Brief

Markets continued to remain under pressure for the second consecutive session. Nifty closed at 10303.15 down by 47 points or 0.45% lower for the day.

## Technical Build up

- ❖ Bearish candle with decrease in volume
- ❖ Sell crossover in oscillators.
- ❖ Upper band of Bollinger exist at 10533
- ❖ Crucial moving average of 20/50 SMA are at 10263 and 10078
- ❖ 200 SMA trend deciding level exist at 9529

## Outlook for the day

Indian Equity market drifted further lower in continuation to previous day's fall and lost nearly half a Percent with widespread selling in metal, oil and gas, telecom and realty sectors. Investors locked in gains amid lingering worries of a spurt in oil prices and its impact on inflation and fiscal deficit. On the technical front, Nifty formed a bearish candle in daily chart, now Nifty formed two bearish candle in two consecutive days wiping out gains made in the 9 trading sessions. As long as Nifty sustains below 10380 zones, short term weakness could prevail for the downside move towards 10250. During the day immediate support around 10270 levels and next support at 10200 levels. Immediate resistance is around 10390 and next resistance is around 10490. On the option front, maximum Put OI is at 10000 followed by 10200 strikes while maximum Call OI is at 10500 followed by 10400 strikes

## Technical & Derivative Report

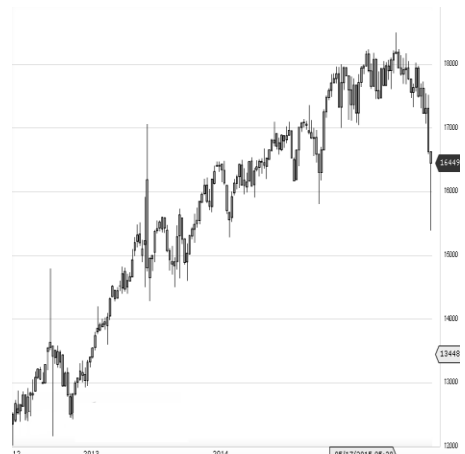
World Indices	LTP	Daily Ch(Pts)	Daily Ch(%)
Dow Jones	23563	6	0.03
Nasdaq	6789	21	0.32
S&P 500	2594	3	0.14
FTSE 100	7529	16	0.22
DAX	13382	3	0.02
Hang Seng	29109	202	0.70
Nikkei	23234	320	1.40
Sensex	33218	-151	-0.46
Nifty	10303	-47	-0.45

Commodity /Forex	LTP	Daily 1.1Ch(Pts)	Daily Ch(%)
Gold (\$/Oz)	1280.80	-2.90	-0.23
Silver (\$/Oz)	17.05	-0.09	-0.51
Copper(USD/lb.)	310.50	0.55	0.18
Brent			
Crude(USD/bbl)	63.63	0.14	0.22
USD/INR	64.95	-0.07	-0.11
USD/YEN	113.99	0.12	0.11
USD/EUR	1.1592	-0.0003	-0.03

Support/Resistance levels for Indian Equity Indices					
	S1	S2	CMP	R1	R2
Sensex	33100	32875	33370	33500	33835
Nifty	10270	10200	10350	10390	10490
Nifty (Fut)	10320	10250	10354	10440	10540

Pivot Level	
Sensex	
Nifty	10324

**US:** In the US Market Bank shares fell broadly on Wednesday amid growing concerns that the recent Republican electoral losses could hinder the party's push to reform the U.S. tax code. They have also been pressured by a flattening yield curve. Technically DJIA is presently trading at the 5th leg through Elliot wave count with negative divergence in oscillators.



Increase in OI with Increase in Price (Long Buildup)					
Symbol	Prev OI	Curr OI	OI Chg (%)	Curr Pr.	Pr.Chg (%)
CHENNP					
ETRO	1536000	1728000	12.5	465.5	2.2
JETAIR					
WAYS	7490400	8208000	9.6	628.4	3.9
NESTLEI					
ND	145600	158300	8.7	7863.35	1.7
TATAEL					
XSI	1772000	1900800	7.3	895	2.2
IBULHS		1052960			
GFIN	9836800	0	7	1210.7	1

Increase in OI with Decrease in Price (Short Buildup)					
Symbol	Prev OI	Curr OI	OI Chg (%)	Curr Pr.	Pr.Chg (%)
BHARTI	4101760	5088610			
ARTL	0	0	24.1	497.2	[4.0]
COALIN	1818830	2069070			
DIA	0	0	13.8	277	[1.7]
TATAM	5644650	6368100			
OTORS	0	0	12.8	442.9	[2.6]
COLPAL	1508500	1659700	10	1028	[1.0]
	2123550	2285100			
GSFC	0	0	7.6	152.2	[3.8]

Nifty declined by 0.45% with Nifty future added 0.9 lakh shares in open interest and stock future added 206.3 Lakh shares in open interest.

- Nifty PCR decreased to 1.36 from 1.43
- Total Nifty Calls added 25.3 lakh shares in open interest.
- Total Nifty Puts shaded 3.6 lakh shares in open interest.
- Maximum open interest (Nifty) in Calls for Oct series is at 10500 and 10000 put.
- FII's sold net Rs.3838.27 Cr(provisional), while DIIs bought net Rs.3038.16 Cr in cash market.
- FII sold net Rs.3433.90 Cr in F&O
- Securities in Ban Period: DHFL, HDIL, IBREALEST, INDIACEM, INFIBEAM, JETAIRWAYS, JSWENERGY & RCOM

## Nifty Tracker

PARTICULARS	08/11/2017	07/11/2017	06/11/2017	03/11/2017
Spot	10303.15	10350.15	10451.8	10452.5
% Change in Spot	-0.45%	-0.97%	-0.01%	0.28%
Nifty(FUT) Nov	10354.9	10409.9	10489.55	10486.8
Nifty(FUT) Nov Vol.	111446	179412	84536	73176
Nifty(FUT) Nov - OI	24655500	24719700	26120475	25954575
Nifty(FUT) Dec	10393.1	10453.15	10532.5	10521.7
Nifty(FUT) Dec Vol.	8375	6734	3671	3143
Nifty(FUT) Dec - OI	1331625	1184025	1119675	1090650

## Trade Statistics for 08/11/2017

PARTICULARS	NO. OF CONTRACTS	TURNOVER (RS. CR.)	PUT CALL RATIO
NSE Index Futures	2,03,133	17765	-
NSE Stock Futures	8,25,716	58225	-
NSE Index Options	71,39,106	6,85,339.34	-
NSE Stock Options	5,35,789	39549	0.51
NSE F&O Total Turnover	87,03,744	800,879	0.83
NSE Cash Turnover	-	35,158.41	-
BSE Cash Turnover	-	17,588.55	-
Total Turnover	-	853626	-

## FII Corner (F&O)

FII NET BUYING/SELLING & CHANGE IN OPEN INTEREST (Cr. Rupee)						
PARTICULARS	08/11/2017		07/11/2017		06/11/2017	
	Net Buying /Selling	Change In Open interest	Net Buying /Selling	Change In Open interest	Net Buying /Selling	Change In Open interest
Index Future	-602	738	-768	296	-929	1122
Index option	-517	498	1719	5181	435	1202
Stock Future	-2288	797	-905	-673	-733	539
Stock option	-26	186	127	63	61	634
Total	-3433	2218	173	4866	-1166	3497

## Market Open Interest

ADDITION/REDUCTION IN MARKET OPEN INTEREST					
Contracts	08/11/2017	07/11/2017	06/11/2017	03/11/2017	02/11/2017
Index Futures	-3	-1731	582	1149	933
Index Options	470	-3202	1564	2218	1617
Stock Futures	8770	10926	7123	-29415	22643
Stock Options	1559	1160	1068	970	932
F&O Total	10796	7153	10337.47	-25077.94	26125.45

## Nifty Option Open Interest Statistics

NIFTY OPTIONS HIGHEST ADDITION IN OPEN INTEREST						
Expiry	Strike	Option Type	Settlement Price	Volume	Open Interest	Change In OI
30-Nov-17	10400	CE	90.95	142716	3778500	509100
30-Nov-17	10500	CE	50.75	202927	4681725	483600
30-Nov-17	10300	CE	143.55	40161	2501775	402525
28-Dec-17	10100	PE	81.95	10543	901800	349800
30-Nov-17	10100	PE	43.7	83304	3279825	343950
30-Nov-17	10600	CE	26.35	134594	3799350	300975
28-Dec-17	10600	CE	87.65	8757	639675	270000
28-Dec-17	10200	PE	106.4	8874	1521125	225600
30-Nov-17	10800	CE	5.8	56245	2513325	154050
30-Nov-17	10900	CE	3.4	24867	1327200	140025

NIFTY OPTIONS HIGHEST REDUCTION IN OPEN INTEREST						
Expiry	Strike	Option Type	Settlement Price	Volume	Open Interest	Change In OI
30-Nov-17	10400	PE	133	134959	2666025	-524250
30-Nov-17	10500	PE	190.55	39578	1180650	-226500
30-Nov-17	9800	PE	16.4	19836	1434000	-208575
30-Nov-17	10700	CE	12.55	102547	2949825	-181725
30-Nov-17	10600	PE	263.2	9346	620025	-162750
30-Nov-17	10000	PE	32	72402	5534250	-145425
30-Nov-17	10300	PE	91.2	169144	4125975	-114375
30-Nov-17	9700	PE	11.75	14466	1578150	-88200
30-Nov-17	11500	CE	0.6	3708	680100	-73575
27-Dec-18	9400	PE	241	865	7350	-64875

## Stock Option Open Interest Statistics

STOCK OPTIONS WITH HIGHEST ADDITION IN OPEN INTEREST							
Symbol	Expiry	Strike	Option Type	Settl. Price	Volume	Open Interest	Change in OI
SUZLON	30-Nov-17	12.5	PE	0.2	167	4740000	3240000
ASHOKLEY	30-Nov-17	130	CE	1.55	3493	6440000	2716000
ASHOKLEY	30-Nov-17	125	CE	2.55	2258	3745000	2128000
ASHOKLEY	30-Nov-17	140	CE	0.6	2603	5348000	1939000
GMRINFRA	30-Nov-17	20	CE	0.3	521	28755000	1890000
SUZLON	30-Nov-17	15	PE	0.65	251	9570000	1770000
BHARTIARTL	30-Nov-17	500	CE	14.7	4142	1722100	1450100
ASHOKLEY	30-Nov-17	150	CE	0.25	743	3493000	1393000
SUZLON	30-Nov-17	15	CE	1.15	104	4320000	1350000
SOUTHBANK	30-Nov-17	32.5	CE	0.5	98	6959610	1126794

STOCK OPTIONS WITH HIGHEST REDUCTION IN OPEN INTEREST							
Symbol	Expiry	Strike	Option Type	Settl. Price	Volume	Open Int.	Change in OI
GMRINFRA	30-Nov-17	22.5	CE	0.15	211	19395000	-990000
GMRINFRA	30-Nov-17	17.5	PE	0.9	54	11025000	-810000
ASHOKLEY	30-Nov-17	125	PE	7.65	429	735000	-553000
PFC	30-Nov-17	135	CE	3.65	452	1134000	-492000
AXISBANK	30-Nov-17	540	CE	23.55	3544	771600	-408000
JPASSOCIAT	30-Nov-17	20	CE	0.4	163	13396000	-408000
SAIL	30-Nov-17	75	PE	3.2	295	2664000	-396000
MANAPPURAM	30-Nov-17	110	CE	1.1	398	1260000	-360000
BHEL	30-Nov-17	95	PE	6.25	169	1230000	-337500
TATAPOWER	30-Nov-17	80	CE	5.05	43	1017000	-324000

## Research Team

Name	Designation	Email ID	Contact No.
Paras Bothra	President Equity Research	paras@ashikagroup.com	+91 22 6611 1704
Krishna Kumar Agarwal	Equity Research Analyst	krishna.a@ashikagroup.com	+91 33 4036 0646
Partha Mazumder	Equity Research Analyst	partha.m@ashikagroup.com	+91 33 4036 0647
Arijit Malakar	Equity Research Analyst	amalakar@ashikagroup.com	+91 33 4036 0644
Kapil Jagasia	Equity Research Analyst	kapil.j@ashikagroup.com	+91 22 6611 1715
Tirthankar Das	Technical & Derivative Analyst	tirthankar.d@ashikagroup.com	+91 33 4036 0645

Ashika Stock Broking Limited ("ASBL") or Research Entity has started its journey in the year 1994 and is engaged in the business of broking services, depository services, distributor of financial products (Mutual fund, IPO & Bonds). This research report has been prepared and distributed by ASBL in the sole capacity of a Research Analyst (Reg No. INH00000206) of SEBI (Research Analyst) Regulations 2014. ASBL is a wholly owned subsidiary of Ashika Global Securities (P) Ltd., a RBI registered non-deposit taking NBFC Company. Ashika group (details is enumerated on our website [www.ashikagroup.com](http://www.ashikagroup.com)) is an integrated financial service provider inter alia engaged in the business of Investment Banking, Corporate Lending, Commodity Broking, Debt Syndication & Other Advisory Services.

There were no significant and material disciplinary actions against ASBL taken by any regulatory authority during last three years.

### Disclosure

ASBL or its associates, its Research Analysts (including their relatives) may have financial interest in the subject company(ies). However, the said financial interest is not limited to having an open stock market position in /acting as advisor to /having a loan transaction with the subject company(ies) apart from registration as clients.

- 1) ASBL or its Research Analysts (including their relatives) do not have any actual / beneficial ownership of 1% or more of securities of the subject company(ies) at the end of the month immediately preceding the date of publication of this report or date of the public appearance. However ASBL's associates may have actual / beneficial ownership of 1% or more of securities of the subject company(ies).
- 2) ASBL or their Research Analysts (including their relatives) do not have any other material conflict of interest at the time of publication of this research report or date of the public appearance. However ASBL's associates might have an actual / potential conflict of interest (other than ownership).
- 3) ASBL or its associates may have received compensation for investment banking, merchant banking, and brokerage services and for other products and services from the subject companies during the preceding 12 months. However, ASBL or its associates or its Research analysts (forming part of Research Desk) have not received any compensation or other benefits from the subject companies or third parties in connection with the research report. Moreover, Research Analysts have not received any compensation from the companies mentioned herein in the past twelve months.
- 4) ASBL or their Research Analysts have not managed or co-managed public offering of securities for the subject company(ies) in the past twelve months. However ASBL's associates may have managed or co-managed public offering of securities for the subject company(ies) in the past twelve months.
- 5) Research Analysts have not served as an officer, director or employee of the companies mentioned in the report.
- 6) Neither ASBL nor its Research Analysts have been engaged in market making activity for the companies mentioned in the report.

### Disclaimer

The research recommendation and information herein are solely for the personal information of the authorized recipient and does not construe to be an offer documents or any investment, legal or taxation advice or solicitation of any action based upon it. This report is not for public distribution or use by any person or entity, where such distribution, publication, availability or use would be contrary to law, regulation or subject to any registration or licensing requirement. We will not treat recipients as customer by virtue of their receiving this report. The report is based upon the information obtained from public sources that we consider reliable, but we do not guarantee its accuracy or completeness. ASBL shall not be in anyways responsible for any loss or damage that may arise to any such person from any inadvertent error in the information contained in this report. The recipients of this report should rely on their own investigations.