

Technical Report

Closing Brief

Markets opened gap up but lost initial gains as oil prices witnessed fall after they hit more than 2 year high earlier this week. However, Nifty managed to close above 10300 levels and shut shop at 10308.95 up by 5.8 points or 0.06%.

Technical Build up

- ❖ Bearish candle with decrease in volume
- ❖ Sell crossover in oscillators.
- ❖ Upper band of Bollinger exist at 10533
- ❖ Crucial moving average of 20/50 SMA are at 10263 and 10078
- ❖ 200 SMA trend deciding level exist at 9529

Outlook for the day

Indian Equity market ended almost unchanged in a volatile session, taking a breather after the recent fall. Consumer Durable, Banking, Metals, Capital Goods stocks gained while Pharma and Auto stocks declined. Investors seems to be watchful ahead of key domestic macros CPI inflation and IIP data and global oil price fluctuation to get the direction. On the technical front, Nifty formed a small-bodied candle after two bearish candle signifies indecisiveness. On the oscillator front cautiousness prevails as MACD, confirmed a bearish crossover signal on the daily charts for the first time since April. However minor pullback occurred after retracing 62% of its last leg of a rally from the lows of 10123, so support level would turn crucial to direct the trend. During the day immediate support around 10260 levels and next support at 10200 levels. Immediate resistance is placed near 10390 and next resistance around 10490 levels. On the option front, maximum Put OI is shifting at 10200 followed by 10000 strikes while maximum Call OI is at 10500 followed by 10400 strikes

Technical & Derivative Report

World Indices	LTP	Daily Ch(Pts)	Daily Ch(%)
Dow Jones	23461	-101	-0.43
Nasdaq	6750	-39	-0.58
S&P 500	2584	-9	-0.38
FTSE 100	7484	-45	-0.61
DAX	13182	-199	-1.49
Hang Seng	29094	-41	-0.14
Nikkei	22646	-222	-0.96
Sensex	33250	32	0.10
Nifty	10308	5	0.06

Commodity /Forex	LTP	Daily 1.1Ch(Pts)	Daily Ch(%)
Gold (\$/Oz)	1286.60	-0.90	-0.07
Silver (\$/Oz)	17.02	0.04	0.24
Copper(USD/lb.)	309.25	0.65	0.21
Brent			
Crude(USD/bbl)	63.85	-0.08	-0.13
USD/INR	64.94	-0.01	-0.02
USD/YEN	113.43	-0.04	-0.04
USD/EUR	1.1646	0.0004	0.03

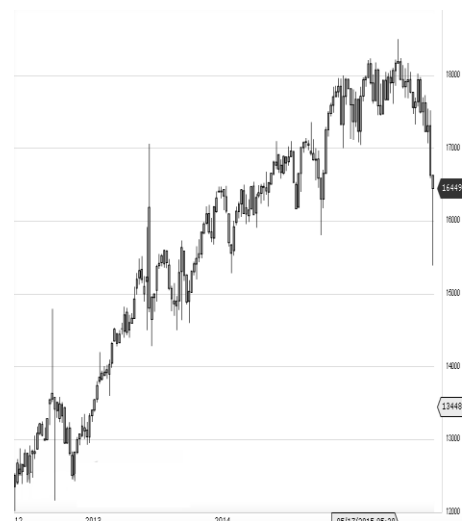
Support/Resistance levels for Indian Equity Indices

	S1	S2	CMP	R1	R2
Sensex	33090	32890	33250	33520	33850
Nifty	10260	10200	10308	10390	10490
Nifty (Fut)	10310	10250	10361	10440	10540

Pivot Level

Sensex	33275
Nifty	10314

US: US Market Bank shares fell on Thursday, pulling back from record highs, on worries that a corporate tax cut could be delayed. Technically DJIA is presently trading at the 5th leg through Elliot wave count with negative divergence in oscillators.



Increase in OI with Increase in Price (Long Buildup)						Increase in OI with Decrease in Price (Short Buildup)					
Symbol	Prev OI	Curr OI	OI Chg (%)	Curr Pr.	Pr.Chg (%)	Symbol	Prev OI	Curr OI	OI Chg (%)	Curr Pr.	Pr.Chg (%)
PAGEIN						MGL	726000	933000	28.5	1163.55	[5.1]
D	20950	36500	74.2	22369.65	9.3	CADILA					
NIITTEC						HC	3235200	3603200	11.4	483.6	[3.1]
H	721500	990000	37.2	666.35	3.3	SHREEC					
KAJARIA						EM	32150	35550	10.6	18200	[2.0]
CER	1033600	1368000	32.4	728	5.1		1009800	1096850			
PETRON	1132500	1344000				HDFC	0	0	8.6	1737.5	[1.2]
ET	0	0	18.7	269.8	3.7		6909120	7482000			
INDIANB	3926000	4550000	15.9	403.15	8.6	ITC	0	0	8.3	262.45	[1.8]

Nifty gained by 0.06% with Nifty future added 1.8 lakh shares in open interest and stock future added 405.4 Lakh shares in open interest.

- Nifty PCR decreased to 1.35 from 1.36
- Total Nifty Calls added 10.5 lakh shares in open interest.
- Total Nifty Puts added 9.4 lakh shares in open interest.
- Maximum open interest (Nifty) in Calls for Oct series is at 10500 and 10200 put.
- FII's sold net Rs.713.75 Cr(provisional), while DIIs bought net Rs.231.25 Cr in cash market.
- FII sold net Rs.390.71 Cr in F&O
- Securities in Ban Period: DHFL, HDIL, IBREALEST, INDIACEM, INFIBEAM, JETAIRWAYS, JISJALEQS, JSWENERGY & RCOM

Nifty Tracker

PARTICULARS	09/11/2017	08/11/2017	07/11/2017	06/11/2017
Spot	10308.95	10303.15	10350.15	10451.8
% Change in Spot	0.06%	-0.45%	-0.97%	-0.01%
Nifty(FUT) Nov	10361.8	10354.9	10409.9	10489.55
Nifty(FUT) Nov Vol.	118648	111446	179412	84536
Nifty(FUT) Nov - OI	24716925	24655500	24719700	26120475
Nifty(FUT) Dec	10400.7	10393.1	10453.15	10532.5
Nifty(FUT) Dec Vol.	6489	8375	6734	3671
Nifty(FUT) Dec - OI	1446450	1331625	1184025	1119675

Trade Statistics for 09/11/2017

PARTICULARS	NO. OF CONTRACTS	TURNOVER (RS. CR.)	PUT CALL RATIO
NSE Index Futures	1,97,635	17054	-
NSE Stock Futures	7,85,629	55564	-
NSE Index Options	1,10,80,804	10,83,399.91	-
NSE Stock Options	5,16,272	38222	0.48
NSE F&O Total Turnover	1,25,80,340	1,194,239	0.85
NSE Cash Turnover	-	33,372.54	-
BSE Cash Turnover	-	4,516.07	-
Total Turnover	-	1232128	-

FII Corner (F&O)

FII NET BUYING/SELLING & CHANGE IN OPEN INTEREST (Cr. Rupee)						
PARTICULARS	09/11/2017		08/11/2017		07/11/2017	
	Net Buying /Selling	Change In Open interest	Net Buying /Selling	Change In Open interest	Net Buying /Selling	Change In Open interest
Index Future	-1112	200	-602	738	-768	296
Index option	1782	-1596	-517	498	1719	5181
Stock Future	-986	1088	-2288	797	-905	-673
Stock option	-74	481	-26	186	127	63
Total	-390	173	-3433	2218	173	4866

Market Open Interest

ADDITION/REDUCTION IN MARKET OPEN INTEREST					
Contracts	09/11/2017	08/11/2017	07/11/2017	06/11/2017	03/11/2017
Index Futures	255	-3	-1731	582	1149
Index Options	1898	470	-3202	1564	2218
Stock Futures	18199	8770	10926	7123	-29415
Stock Options	887	1559	1160	1068	970
F&O Total	21239	10796	7152.55	10337.47	-25077.94

Nifty Option Open Interest Statistics

NIFTY OPTIONS HIGHEST ADDITION IN OPEN INTEREST						
Expiry	Strike	Option Type	Settlement Price	Volume	Open Interest	Change In OI
30-Nov-17	10800	CE	5.25	51373	3020475	507150
30-Nov-17	10200	PE	53.6	145998	5496750	431925
30-Nov-17	10100	PE	35.45	82137	3547350	267525
25-Jan-18	10400	PE	205.7	3171	254775	228675
31-Dec-20	10200	PE	557.9	1739	135225	130425
28-Dec-17	10600	CE	83.9	8831	762075	122400
30-Nov-17	10300	PE	81.3	195508	4246050	120075
30-Nov-17	10900	CE	3.15	25465	1446675	119475
30-Nov-17	10700	CE	11.75	74778	3059250	109425
28-Dec-17	10200	PE	97.7	6838	1603700	82575

NIFTY OPTIONS HIGHEST REDUCTION IN OPEN INTEREST						
Expiry	Strike	Option Type	Settlement Price	Volume	Open Interest	Change In OI
30-Nov-17	10400	PE	123.6	101015	2430825	-235200
30-Nov-17	10600	CE	24.05	118568	3602325	-197025
30-Nov-17	10500	CE	47.5	172767	4525875	-155850
30-Nov-17	10000	PE	25.65	75990	5427150	-107100
30-Nov-17	11500	CE	0.65	2898	583575	-96525
30-Nov-17	9700	PE	8.85	14228	1515525	-62625
30-Nov-17	9900	PE	17.75	31037	2146200	-49500
28-Dec-17	9500	PE	20.2	2809	2462075	-48900
30-Nov-17	10500	PE	183.05	25987	1136475	-44175
30-Nov-17	10600	PE	256.25	5023	586500	-33525

Stock Option Open Interest Statistics

STOCK OPTIONS WITH HIGHEST ADDITION IN OPEN INTEREST							
Symbol	Expiry	Strike	Option Type	Settl. Price	Volume	Open Interest	Change in OI
TATAMOTORS	30-Nov-17	450	CE	14.35	9158	3367500	1915500
ICICIBANK	30-Nov-17	335	CE	1.9	1262	2428250	1837000
NHPC	30-Nov-17	27.5	CE	0.95	331	3051000	1512000
JPASSOCIAT	30-Nov-17	17.5	CE	1.2	96	5168000	1292000
TATAMOTORS	30-Nov-17	460	CE	11.1	8026	3312000	1255500
TATAMOTORS	30-Nov-17	500	CE	3.9	7042	3093000	1236000
GMRINFRA	30-Nov-17	20	CE	0.45	364	29970000	1215000
SUZLON	30-Nov-17	17.5	CE	0.3	203	38130000	1200000
SAIL	30-Nov-17	85	CE	1.7	664	7152000	1140000
JPASSOCIAT	30-Nov-17	25	CE	0.1	69	4386000	1088000

STOCK OPTIONS WITH HIGHEST REDUCTION IN OPEN INTEREST							
Symbol	Expiry	Strike	Option Type	Settl. Price	Volume	Open Int.	Change in OI
ASHOKLEY	30-Nov-17	120	PE	6.4	538	1267000	-714000
TATAGLOBAL	30-Nov-17	200	CE	41.25	162	216000	-499500
BHARTIARTL	30-Nov-17	500	CE	17.65	1703	1269900	-452200
GMRINFRA	30-Nov-17	17.5	PE	0.7	72	10575000	-450000
GMRINFRA	30-Nov-17	22.5	CE	0.15	212	19035000	-360000
TATAGLOBAL	30-Nov-17	225	CE	19.4	139	270000	-360000
TATAGLOBAL	30-Nov-17	210	CE	32.5	95	400500	-346500
RCOM	30-Nov-17	22.5	CE	0.05	30	4858000	-308000
ORIENTBANK	30-Nov-17	130	PE	6.55	212	456000	-300000
SOUTHBANK	30-Nov-17	30	PE	0.65	22	2883267	-298269

Research Team

Name	Designation	Email ID	Contact No.
Paras Bothra	President Equity Research	paras@ashikagroup.com	+91 22 6611 1704
Krishna Kumar Agarwal	Equity Research Analyst	krishna.a@ashikagroup.com	+91 33 4036 0646
Partha Mazumder	Equity Research Analyst	partha.m@ashikagroup.com	+91 33 4036 0647
Arijit Malakar	Equity Research Analyst	amalakar@ashikagroup.com	+91 33 4036 0644
Kapil Jagasia	Equity Research Analyst	kapil.j@ashikagroup.com	+91 22 6611 1715
Tirthankar Das	Technical & Derivative Analyst	tirthankar.d@ashikagroup.com	+91 33 4036 0645

Ashika Stock Broking Limited ("ASBL") or Research Entity has started its journey in the year 1994 and is engaged in the business of broking services, depository services, distributor of financial products (Mutual fund, IPO & Bonds). This research report has been prepared and distributed by ASBL in the sole capacity of a Research Analyst (Reg No. INH00000206) of SEBI (Research Analyst) Regulations 2014. ASBL is a wholly owned subsidiary of Ashika Global Securities (P) Ltd., a RBI registered non-deposit taking NBFC Company. Ashika group (details is enumerated on our website www.ashikagroup.com) is an integrated financial service provider inter alia engaged in the business of Investment Banking, Corporate Lending, Commodity Broking, Debt Syndication & Other Advisory Services.

There were no significant and material disciplinary actions against ASBL taken by any regulatory authority during last three years.

Disclosure

ASBL or its associates, its Research Analysts (including their relatives) may have financial interest in the subject company(ies). However, the said financial interest is not limited to having an open stock market position in /acting as advisor to /having a loan transaction with the subject company(ies) apart from registration as clients.

- ASBL or its Research Analysts (including their relatives) do not have any actual / beneficial ownership of 1% or more of securities of the subject company(ies) at the end of the month immediately preceding the date of publication of this report or date of the public appearance. However ASBL's associates may have actual / beneficial ownership of 1% or more of securities of the subject company(ies).
- ASBL or their Research Analysts (including their relatives) do not have any other material conflict of interest at the time of publication of this research report or date of the public appearance. However ASBL's associates might have an actual / potential conflict of interest (other than ownership).
- ASBL or its associates may have received compensation for investment banking, merchant banking, and brokerage services and for other products and services from the subject companies during the preceding 12 months. However, ASBL or its associates or its Research analysts (forming part of Research Desk) have not received any compensation or other benefits from the subject companies or third parties in connection with the research report. Moreover, Research Analysts have not received any compensation from the companies mentioned herein in the past twelve months.
- ASBL or their Research Analysts have not managed or co-managed public offering of securities for the subject company(ies) in the past twelve months. However ASBL's associates may have managed or co-managed public offering of securities for the subject company(ies) in the past twelve months.
- Research Analysts have not served as an officer, director or employee of the companies mentioned in the report.
- Neither ASBL nor its Research Analysts have been engaged in market making activity for the companies mentioned in the report.

Disclaimer

The research recommendation and information herein are solely for the personal information of the authorized recipient and does not construe to be an offer documents or any investment, legal or taxation advice or solicitation of any action based upon it. This report is not for public distribution or use by any person or entity, where such distribution, publication, availability or use would be contrary to law, regulation or subject to any registration or licensing requirement. We will not treat recipients as customer by virtue of their receiving this report. The report is based upon the information obtained from public sources that we consider reliable, but we do not guarantee its accuracy or completeness. ASBL shall not be in anyways responsible for any loss or damage that may arise to any such person from any inadvertent error in the information contained in this report. The recipients of this report should rely on their own investigations.