

# Technical Report

## Closing Brief

Benchmark Indices in yesterday's session ended moderately higher. Nifty finally ended at 9618.15 up by 11.25 points or 0.12%. Advance and Decline Ratio in the Nifty stood at 25:24 while 2 stocks remain unchanged.

## Technical Build up

- ❖ Bearish candle with increase in volume
- ❖ Sell crossover in oscillators.
- ❖ Upper band of Bollinger exist at 9765
- ❖ Crucial moving average of 20/50 SMA are at 9565 and 9388
- ❖ 200 SMA trend deciding level exist at 8777

## Outlook for the day

Indian Equity market remained sideways for yet another day and settled almost unchanged in the end. Realty, healthcare, oil and gas and auto indices rose. WPI data showed some ease on a MoM basis as inflation slipped to 2.17% as compared to 3.85% in April and 0.90% in the similar period of the previous year. US Fed went ahead with the widely-expected rate hike at the end of the two-day rate-setting meeting of FOMC and increased the inter-bank lending rate by 25 basis points to 1.25 per cent. On the technical front, Nifty continued its formation of lower lows for fourth consecutive session. Nifty formed an "Hammer Candle" on the Daily chart followed by "Inverted hammer" indicating there is a tug of war between the Bulls and the Bear However Nifty took support at its 13-DEMA placed at 9,605 might lent support. A breach of 13-DEMA and 9,600-9,580 will open up possibilities for a further decline towards 9,500. Immediate support is placed around 9570 followed by 9530 while resistance is placed around 9665 followed by 9700. On the option front maximum Put OI is at 9500 followed by 9600 strike while maximum Call OI is at 9700 followed by 9600 strike

## Technical & Derivative Report

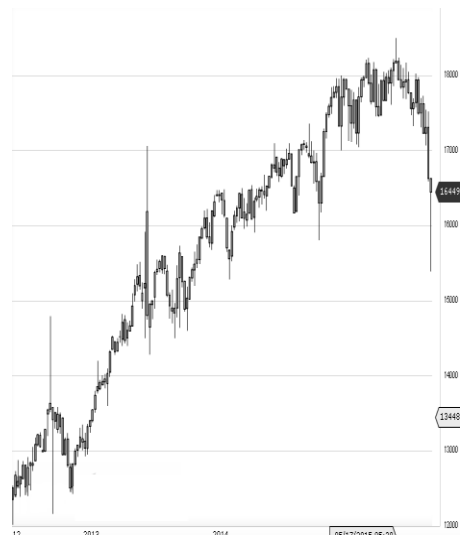
World Indices	LTP	Daily Ch(Pts)	Daily Ch(%)
Dow Jones	21374	46	0.22
Nasdaq	6194	-25	-0.41
S&P 500	2437	-2	-0.10
FTSE 100	7474	-26	-0.35
DAX			
Hang Seng	25636	-239	-0.93
Nikkei	19794	-89	-0.45
Sensex	31155	52	0.17
Nifty	9618	11	0.12

Commodity /Forex	LTP	Daily Ch(Pts)	Daily Ch(%)
Gold (\$/Oz)	1267.30	-8.60	-0.67
Silver (\$/Oz)	17.03	-0.11	-0.65
Copper(USD/lb.)	257.30	-0.05	-0.02
Brent Crude(USD/bbl)	46.98	-0.02	-0.04
USD/INR	64.29	-0.04	-0.07
USD/YEN	109.57	-0.01	-0.01
USD/EUR	1.1221	0.0003	0.03

Support/Resistance levels for Indian Equity Indices					
	S1	S2	CMP	R1	R2
Sensex	30990	30860	31155	31310	31425
Nifty	9570	9530	9618	9665	9700
Nifty (Fut)	9590	9550	9637	9685	9720

Pivot Level		
Sensex		31133
Nifty		9608

**US:** US market closed mixed on Wednesday after the Federal Reserve raised interest rates for the second time this year.. Technically DJIA is presently trading at the 5th leg through Elliot wave count with negative divergence in oscillators.



Increase in OI with Increase in Price (Long Buildup)						Increase in OI with Decrease in Price (Short Buildup)					
Symbol	Prev OI	Curr OI	OI Chg (%)	Curr Pr.	Pr.Chg (%)	Symbol	Prev OI	Curr OI	OI Chg (%)	Curr Pr.	Pr.Chg (%)
PAGEIN						YESBAN					
D	27250	31850	16.9	16338	2.2	K	7408450	8571850	15.7	1456.65	[2.7]
MUTHO						MINDTR					
OTFIN	1633500	1881000	15.2	477.5	2.6	EE	3536400	3820800	8	525.9	[1.6]
GODREJI						ESCORT					
ND	1716000	1965000	14.5	646.7	3.8	S	3047000	3262600	7.1	721.6	[3.1]
GMRINF	2.21E+0	2.52E+0					4114800	4395600			
RA	8	8	13.6	19.45	2.9	ITC	0	0	6.8	301.1	[1.6]
HEXAW						CONCO					
ARE	4017000	4524000	12.6	236.7	0.4	R	1056250	1113125	5.4	1154	[1.7]

Nifty gained by 0.12% with Nifty future shaded 3.0 lakh shares in open interest and stock future added 597.1 Lakh shares in open interest.

- Nifty PCR increased to 1.19 from 1.15
- Total Nifty Calls shaded 9.5 lakh shares in open interest.
- Total Nifty Puts added 16.7 lakh shares in open interest.
- Maximum open interest (Nifty) in Calls for May series is at 9700 and 9500 put.
- FII's sold net Rs. 161.13 Cr(provisional), while DIIs bought net Rs.71.65 Cr in cash market.
- FII bought net Rs.500.81 Cr in F&O
- Securities in Ban Period: BANKINDIA, HDIL, IBREALEST, INFIBEAM, KSCL, ORIENTBANK, RCOM & UJJIVAN

## Nifty Tracker

PARTICULARS	14/06/2017	13/06/2017	12/06/2017	09/06/2017
Spot	9618.15	9606.9	9616.4	9668.25
% Change in Spot	0.12%	-0.10%	-0.54%	0.22%
Nifty(FUT) June	9637.6	9615.1	9620.15	9682.9
Nifty(FUT) June Vol.	78573	68823	101912	103553
Nifty(FUT) June - OI	21426525	21766350	21800700	21990975
Nifty(FUT) July	9656.1	9633	9639.85	9702.2
Nifty(FUT) July Vol.	3798	3520	3786	4115
Nifty(FUT) July - OI	1566525	1526775	1503525	1442475

## Trade Statistics for 14/06/2017

PARTICULARS	NO. OF CONTRACTS	TURNOVER (RS. CR.)	PUT CALL RATIO
NSE Index Futures	1,35,735	10906	-
NSE Stock Futures	5,58,188	40224	-
NSE Index Options	37,59,525	3,23,291.07	-
NSE Stock Options	3,84,282	28336	0.46
NSE F&O Total Turnover	48,37,730	402,757	1.06
NSE Cash Turnover	-	20,503.51	-
BSE Cash Turnover	-	3629.15	-
Total Turnover	-	426890	-

## FII Corner (F&O)

FII NET BUYING/SELLING & CHANGE IN OPEN INTEREST (Cr. Rupee)						
PARTICULARS	14/06/2017		13/06/2017		12/06/2017	
	Net Buying /Selling	Change In Open interest	Net Buying /Selling	Change In Open interest	Net Buying /Selling	Change In Open interest
Index Future	150	237	-300	172	-1304	851
Index option	668	-511	-341	796	596	1807
Stock Future	-310	533	-121	269	-607	-33
Stock option	-8	242	-14	366	-38	262
Total	500	502	-776	1602	-1353	2888

## Market Open Interest

ADDITION/REDUCTION IN MARKET OPEN INTEREST					
Contracts	14/06/2017	13/06/2017	12/06/2017	09/06/2017	08/06/2017
Index Futures	-441	-59	-459	-43	-107
Index Options	944	394	-978	652	577
Stock Futures	6169	4077	8782	-26401	15295
Stock Options	576	768	554	831	763
F&O Total	7248	5180	7898.96	-24960.83	16528.55

## Nifty Option Open Interest Statistics

NIFTY OPTIONS HIGHEST ADDITION IN OPEN INTEREST						
Expiry	Strike	Option Type	Settlement Price	Volume	Open Interest	Change In OI
25-Jun-20	9600	PE	510.1	7867	1387725	584250
29-Jun-17	9600	PE	59.7	191054	6144150	564150
29-Jun-17	9450	PE	23.95	19888	1164075	552525
29-Jun-17	9550	PE	43.85	29801	744300	234375
27-Jul-17	9700	CE	104.7	6025	808575	131025
29-Jun-17	9850	CE	10.6	8056	512025	116025
27-Jul-17	10000	CE	20.9	10300	1230375	111675
27-Jul-17	9700	PE	146.95	3071	476025	106650
29-Jun-17	9000	PE	3.7	13980	3424725	74250
27-Jul-17	10100	CE	12.1	2399	352500	73350

NIFTY OPTIONS HIGHEST REDUCTION IN OPEN INTEREST						
Expiry	Strike	Option Type	Settlement Price	Volume	Open Interest	Change In OI
29-Jun-17	9700	CE	45.2	181322	5953125	-490350
29-Jun-17	9600	CE	94.8	136703	4657950	-302025
29-Jun-17	9800	CE	17.5	107075	4464225	-247050
29-Jun-17	9900	CE	6.3	47952	2681325	-185175
29-Jun-17	9400	PE	18.65	88728	5336250	-179550
29-Jun-17	9700	PE	105.85	54488	1868325	-139950
29-Jun-17	9650	CE	66.5	42057	953925	-138225
29-Jun-17	9400	CE	251.45	4447	1020225	-129075
29-Jun-17	9650	PE	79.1	11376	467625	-125625
29-Jun-17	9200	PE	6.45	27648	2774350	-88875

## Stock Option Open Interest Statistics

STOCK OPTIONS WITH HIGHEST ADDITION IN OPEN INTEREST							
Symbol	Expiry	Strike	Option Type	Settl. Price	Volume	Open Interest	Change in OI
GMRINFRA	29-Jun-17	22.5	CE	0.25	861	13410000	3015000
SUZLON	29-Jun-17	25	CE	0.05	432	22950000	3000000
GMRINFRA	29-Jun-17	17.5	PE	0.35	304	11205000	2925000
GMRINFRA	29-Jun-17	20	CE	0.85	1744	30285000	2880000
SUZLON	29-Jun-17	20	CE	0.25	411	31110000	2700000
GMRINFRA	29-Jun-17	25	CE	0.1	249	13050000	2025000
SUZLON	29-Jun-17	22.5	CE	0.1	233	28860000	1260000
BANKINDIA	29-Jun-17	195	CE	0.1	243	10800000	918000
BANKINDIA	29-Jun-17	190	CE	0.15	172	11220000	912000
GMRINFRA	29-Jun-17	20	PE	1.4	53	18450000	855000

STOCK OPTIONS WITH HIGHEST REDUCTION IN OPEN INTEREST							
Symbol	Expiry	Strike	Option Type	Settl. Price	Volume	Open Int.	Change in OI
ICICIBANK	29-Jun-17	310	CE	11.65	829	745000	-1002500
JPASSOCIAT	29-Jun-17	17.5	CE	0.15	14	9588000	-612000
JPASSOCIAT	29-Jun-17	12.5	CE	1.6	18	7956000	-544000
PNB	29-Jun-17	150	CE	6.1	1164	3521000	-462000
ONGC	29-Jun-17	180	CE	0.75	454	3476250	-457500
RELIANCE	29-Jun-17	1340	CE	35.2	7684	629500	-415000
RELIANCE	29-Jun-17	1320	CE	47.5	2657	247500	-401000
FEDERALBNK	29-Jun-17	120	CE	2.15	374	3487000	-385000
IDEA	29-Jun-17	90	CE	0.25	352	3689000	-371000
HDIL	29-Jun-17	100	CE	0.95	63	3976000	-368000

## Research Team

Name	Designation	Email ID	Contact No.
Paras Bothra	President Equity Research	paras@ashikagroup.com	+91 22 6611 1704
Krishna Kumar Agarwal	Equity Research Analyst	krishna.a@ashikagroup.com	+91 33 4036 0646
Partha Mazumder	Equity Research Analyst	partha.m@ashikagroup.com	+91 33 4036 0647
Arijit Malakar	Equity Research Analyst	amalakar@ashikagroup.com	+91 33 4036 0644
Kapil Jagasia, CFA	Equity Research Analyst	kapil.j@ashikagroup.com	+91 22 6611 1715
Tirthankar Das	Technical & Derivative Analyst	tirthankar.d@ashikagroup.com	+91 33 4036 0645

Ashika Stock Broking Limited ("ASBL") or Research Entity has started its journey in the year 1994 and is engaged in the business of broking services, depository services, distributor of financial products (Mutual fund, IPO & Bonds). This research report has been prepared and distributed by ASBL in the sole capacity of a Research Analyst (Reg No. INH000000206) of SEBI (Research Analyst) Regulations 2014. ASBL is a wholly owned subsidiary of Ashika Global Securities (P) Ltd., a RBI registered non-deposit taking NBFC Company. Ashika group (details is enumerated on our website [www.ashikagroup.com](http://www.ashikagroup.com)) is an integrated financial service provider inter alia engaged in the business of Investment Banking, Corporate Lending, Commodity Broking, Debt Syndication & Other Advisory Services.

There were no significant and material disciplinary actions against ASBL taken by any regulatory authority during last three years.

### Disclosure

ASBL or its associates, its Research Analysts (including their relatives) may have financial interest in the subject company(ies). However, the said financial interest is not limited to having an open stock market position in /acting as advisor to /having a loan transaction with the subject company(ies) apart from registration as clients.

- 1) ASBL or its Research Analysts (including their relatives) do not have any actual / beneficial ownership of 1% or more of securities of the subject company(ies) at the end of the month immediately preceding the date of publication of this report or date of the public appearance. However ASBL's associates may have actual / beneficial ownership of 1% or more of securities of the subject company(ies).
- 2) ASBL or their Research Analysts (including their relatives) do not have any other material conflict of interest at the time of publication of this research report or date of the public appearance. However ASBL's associates might have an actual / potential conflict of interest (other than ownership).
- 3) ASBL or its associates may have received compensation for investment banking, merchant banking, and brokerage services and for other products and services from the subject companies during the preceding 12 months. However, ASBL or its associates or its Research analysts (forming part of Research Desk) have not received any compensation or other benefits from the subject companies or third parties in connection with the research report. Moreover, Research Analysts have not received any compensation from the companies mentioned herein in the past twelve months.
- 4) ASBL or their Research Analysts have not managed or co-managed public offering of securities for the subject company(ies) in the past twelve months. However ASBL's associates may have managed or co-managed public offering of securities for the subject company(ies) in the past twelve months.
- 5) Research Analysts have not served as an officer, director or employee of the companies mentioned in the report.
- 6) Neither ASBL nor its Research Analysts have been engaged in market making activity for the companies mentioned in the report.

### Disclaimer

The research recommendation and information herein are solely for the personal information of the authorized recipient and does not construe to be an offer documents or any investment, legal or taxation advice or solicitation of any action based upon it. This report is not for public distribution or use by any person or entity, where such distribution, publication, availability or use would be contrary to law, regulation or subject to any registration or licensing requirement. We will not treat recipients as customer by virtue of their receiving this report. The report is based upon the information obtained from public sources that we consider reliable, but we do not guarantee its accuracy or completeness. ASBL shall not be in anyways responsible for any loss or damage that may arise to any such person from any inadvertent error in the information contained in this report. The recipients of this report should rely on their own investigations.