

Technical Report

Closing Brief

Markets closed marginally in green amid choppy trading as investors turned cautious near all time high levels. Nifty pared early gains as increase in WPI inflation weighed on investor sentiment. However, Nifty managed to hold above 10050 levels and closed at 10086.60 up by 7.30 points or 0.07%.

Technical Build up

- ❖ Bearish candle with decrease in volume
- ❖ Buy crossover in oscillators.
- ❖ Lower band of Bollinger exist at 10107
- ❖ Crucial moving average of 20/50 SMA are at 9918 and 9908
- ❖ 200 SMA trend deciding level exist at 9177

Outlook for the day

Indian Equity market traded range bound and ended flat, taking a breather after the recent recovery s investors turned wary because of a spike in inflation and subdued Chinese economic data. In the morning news North Korea Launches Another Missile, Escalating Crisis, a direct challenge to the United States and China just days after a new sanctions resolution adopted by the United Nations Security Council. On the technical front, Nifty made a Spinning Top candle on the daily chart which is regarded as a neutral pattern which suggests indecisiveness among both bulls as well as bears. Nifty failed to surpass its life time high of 10138 and inability to surpass the said resistance level might result in to form bearish double top formation which might be extremely negative for the market. During the day Nifty has immediate support around 10060 levels and next support at 10000 levels. Immediate resistance is around 10140 and next resistance is around 10220 levels. On the option front maximum Put is at 9900 followed by 10000 strike while maximum Call OI is at 10200 followed by 10100 strike

Technical & Derivative Report

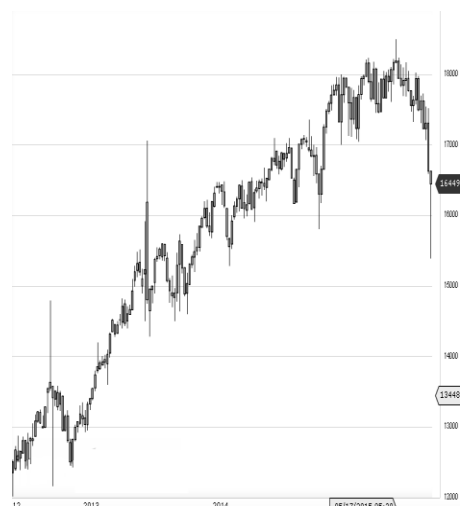
World Indices	LTP	Daily Ch(Pts)	Daily Ch(%)
Dow Jones	22203	45	0.20
Nasdaq	6429	-31	-0.48
S&P 500	2495	-2	-0.11
FTSE 100	7295	-84	-1.14
DAX	12540	-13	-0.10
Hang Seng	27583	-193	-0.70
Nikkei	19832	24	0.13
Sensex	32241	55	0.17
Nifty	10086	7	0.07

Commodity /Forex	LTP	Daily 1.1Ch(Pts)	Daily Ch(%)
Gold (\$/Oz)	1335.70	6.40	0.48
Silver (\$/Oz)	17.89	0.10	0.54
Copper(USD/lb.)	297.00	1.25	0.42
Brent			
Crude(USD/bbl)	55.22	-0.25	-0.45
USD/INR	64.12	0.12	0.20
USD/YEN	110.14	-0.10	-0.09
USD/EUR	1.1911	-0.0008	-0.07

Support/Resistance levels for Indian Equity Indices					
	S1	S2	CMP	R1	R2
Sensex	32150	31950	32241	32420	32685
Nifty	10060	10000	10086	10140	10220
Nifty (Fut)	10090	10030	10114	10170	10250

Pivot Level		
Sensex		32252
Nifty		10094

US: US Market closed mostly lower on Thursday after strong inflation data raised the possibility of tighter monetary policy from the Federal Reserve. Technically DJIA is presently trading at the 5th leg through Elliot wave count with negative divergence in oscillators.



Increase in OI with Increase in Price (Long Buildup)						
Symbol	Prev OI	Curr OI	OI Chg (%)	Curr Pr.	Pr.Chg (%)	
BHEL	2720000	3548500	0	30.5	137.8	3.9
TORNTP	0	0				
HARM	288400	329600	14.3	1226.25	0.7	
CONCO						
R	1232500	1356875	10.1	1382.9	1	
HCC	2574000	2790000	0	8.4	38.9	6.9
PEL	926100	999300	7.9	2931	6.2	

Increase in OI with Decrease in Price (Short Buildup)						
Symbol	Prev OI	Curr OI	OI Chg (%)	Curr Pr.	Pr.Chg (%)	
INDIGO	1584000	1899600	19.9	1179.95	[1.8]	
APOLLO						
HOSP	1507500	1670500	10.8	1067.4	[0.7]	
VEDL	3883250	4280150	0	10.2	321.3	[2.2]
OIL	2882352	3072696	6.6	317.8	[0.3]	
INFIBE	4638800	4914800	0	6	145	[0.3]
M	0	0				

Nifty gained by 0.07% with Nifty future added 3.5 lakh shares in open interest and stock future shaded 620.2 Lakh shares in open interest.

- Nifty PCR increased to 1.54 from 1.51
- Total Nifty Calls added 7.8 lakh shares in open interest.
- Total Nifty Puts added 27.4 lakh shares in open interest.
- Maximum open interest (Nifty) in Calls for July series is at 10200 and 9900 put.
- FII's sold net Rs.1334.23 Cr(provisional), while DIIs bought net Rs.793.31 Cr in cash market.
- FII bought net Rs.731.74 Cr in F&O
- Securities in Ban Period: DHFL, IBREALEST, JPASSOCIAT, JSWENERGY & WOCKPHARMA

Nifty Tracker

PARTICULARS	14/09/2017	13/09/2017	12/09/2017	11/09/2017
Spot	10086.6	10079.3	10093.05	10006.05
% Change in Spot	0.07%	-0.14%	0.87%	0.72%
Nifty(FUT) Sep	10114.45	10091.45	10107.9	10025.9
Nifty(FUT) Sep Vol.	80249	94799	89824	90944
Nifty(FUT) Sep - OI	20842575	20522250	19938600	19771125
Nifty(FUT) Oct	10144.85	10122.8	10137.05	10057.45
Nifty(FUT) Oct Vol.	3370	4840	4175	3763
Nifty(FUT) Oct - OI	836550	812625	760875	660375

Trade Statistics for 14/09/2017

PARTICULARS	NO. OF CONTRACTS	TURNOVER (RS. CR.)	PUT CALL RATIO
NSE Index Futures	1,47,049	12635	-
NSE Stock Futures	6,94,668	51159	-
NSE Index Options	94,42,585	8,98,267.36	-
NSE Stock Options	5,37,902	41086	0.44
NSE F&O Total Turnover	1,08,22,204	1,003,147	0.92
NSE Cash Turnover	-	27,692.34	-
BSE Cash Turnover	-	3,427.26	-
Total Turnover	-	1034267	-

FII Corner (F&O)

FII NET BUYING/SELLING & CHANGE IN OPEN INTEREST (Cr. Rupee)						
PARTICULARS	14/09/2017		13/09/2017		12/09/2017	
	Net Buying /Selling	Change In Open interest	Net Buying /Selling	Change In Open interest	Net Buying /Selling	Change In Open interest
Index Future	-484	386	-532	1200	-299	440
Index option	1041	1627	-93	792	-18	2718
Stock Future	58	613	63	336	211	1148
Stock option	117	412	116	647	-68	565
Total	732	3038	-446	2975	-174	4871

Market Open Interest

ADDITION/REDUCTION IN MARKET OPEN INTEREST					
Contracts	14/09/2017	13/09/2017	12/09/2017	11/09/2017	08/09/2017
Index Futures	531	333	1006	1778	305
Index Options	2065	328	2746	2378	423
Stock Futures	17047	9006	12125	9017	-24864
Stock Options	1217	1354	1067	1501	1490
F&O Total	20860	11020	16944.08	14673.29	-22646.28

Nifty Option Open Interest Statistics

NIFTY OPTIONS HIGHEST ADDITION IN OPEN INTEREST						
Expiry	Strike	Option Type	Settlement Price	Volume	Open Interest	Change In OI
28-Sep-17	9400	PE	4.9	23541	2084175	566025
28-Sep-17	10000	PE	39.95	200885	5523075	532500
26-Oct-17	8400	CE	1729.05	6703	502725	502725
28-Sep-17	9950	PE	30.35	26253	1010475	422550
26-Oct-17	8500	CE	1618	4003	301050	300225
28-Sep-17	9500	PE	6.1	26880	3646050	294675
28-Sep-17	10100	PE	68.05	187157	3937350	294525
28-Sep-17	10150	CE	54.15	33528	908250	293100
26-Oct-17	8300	CE	1814	3825	286875	286875
28-Sep-17	10200	CE	35.55	212644	4356000	232350

NIFTY OPTIONS HIGHEST REDUCTION IN OPEN INTEREST						
Expiry	Strike	Option Type	Settlement Price	Volume	Open Interest	Change In OI
28-Sep-17	10000	CE	150.2	62597	2889000	-569550
28-Sep-17	8400	CE	1705.05	6857	289800	-373125
28-Sep-17	8300	CE	1805	3827	31950	-286950
28-Sep-17	9900	PE	24.5	124818	5879925	-189900
28-Sep-17	8200	CE	1895	2529	111600	-189225
28-Sep-17	10050	PE	51.65	28396	687675	-84900
28-Sep-17	10500	PE	382.05	2136	841500	-84375
28-Sep-17	9400	CE	715.65	1044	240225	-65400
28-Sep-17	8500	CE	1605.65	4218	1107600	-64575
28-Sep-17	9800	CE	325.05	3142	869925	-49575

Stock Option Open Interest Statistics

STOCK OPTIONS WITH HIGHEST ADDITION IN OPEN INTEREST							
Symbol	Expiry	Strike	Option Type	Settl. Price	Volume	Open Interest	Change in OI
BHEL	28-Sep-17	150	CE	1.05	9115	7330000	6240000
BHEL	28-Sep-17	145	CE	1.7	6451	6420000	5015000
BHEL	28-Sep-17	160	CE	0.45	3520	2065000	2010000
BHEL	28-Sep-17	140	CE	3	4774	3605000	1965000
BHEL	28-Sep-17	135	PE	2.75	2198	2165000	1745000
BHEL	28-Sep-17	155	CE	0.65	2560	1665000	1635000
RCOM	28-Sep-17	22.5	CE	0.8	755	4494000	1512000
RCOM	28-Sep-17	20	CE	2.2	152	3794000	1400000
BHEL	28-Sep-17	130	PE	1.25	2594	2100000	1360000
BHEL	28-Sep-17	140	PE	5.4	1804	1455000	1240000

STOCK OPTIONS WITH HIGHEST REDUCTION IN OPEN INTEREST							
Symbol	Expiry	Strike	Option Type	Settl. Price	Volume	Open Int.	Change in OI
TATAMOTORS	28-Sep-17	400	CE	11.7	6980	1996500	-1611000
IFCI	28-Sep-17	22.5	PE	0.3	60	1364000	-902000
IDFC	28-Sep-17	60	CE	2.65	677	4514400	-778800
AXISBANK	28-Sep-17	500	CE	21.75	1857	448800	-776400
JPASSOCIAT	28-Sep-17	22.5	CE	0.85	41	10812000	-748000
GMRINFRA	28-Sep-17	17.5	CE	1	255	15660000	-720000
SUZLON	28-Sep-17	17.5	CE	0.5	398	29010000	-720000
AXISBANK	28-Sep-17	510	CE	14.25	3929	834000	-672000
TATAMOTORS	28-Sep-17	390	CE	18.4	1948	784500	-639000
IDFCBANK	28-Sep-17	60	CE	1.95	1128	4680000	-540000

Research Team

Name	Designation	Email ID	Contact No.
Paras Bothra	President Equity Research	paras@ashikagroup.com	+91 22 6611 1704
Sanjeev Jain	AVP Equity Research	sanjeev.j@ashikagroup.com	+91 33 4036 0650
Krishna Kumar Agarwal	Equity Research Analyst	krishna.a@ashikagroup.com	+91 33 4036 0646
Partha Mazumder	Equity Research Analyst	partha.m@ashikagroup.com	+91 33 4036 0647
Arijit Malakar	Equity Research Analyst	amalakar@ashikagroup.com	+91 33 4036 0644
Kapil Jagasia	Equity Research Analyst	kapil.j@ashikagroup.com	+91 22 6611 1715
Tirthankar Das	Technical & Derivative Analyst	tirthankar.d@ashikagroup.com	+91 33 4036 0645

Ashika Stock Broking Limited ("ASBL") or Research Entity has started its journey in the year 1994 and is engaged in the business of broking services, depository services, distributor of financial products (Mutual fund, IPO & Bonds). This research report has been prepared and distributed by ASBL in the sole capacity of a Research Analyst (Reg No. INH00000206) of SEBI (Research Analyst) Regulations 2014. ASBL is a wholly owned subsidiary of Ashika Global Securities (P) Ltd., a RBI registered non-deposit taking NBFC Company. Ashika group (details is enumerated on our website www.ashikagroup.com) is an integrated financial service provider inter alia engaged in the business of Investment Banking, Corporate Lending, Commodity Broking, Debt Syndication & Other Advisory Services.

There were no significant and material disciplinary actions against ASBL taken by any regulatory authority during last three years.

Disclosure

ASBL or its associates, its Research Analysts (including their relatives) may have financial interest in the subject company(ies). However, the said financial interest is not limited to having an open stock market position in /acting as advisor to /having a loan transaction with the subject company(ies) apart from registration as clients.

- ASBL or its Research Analysts (including their relatives) do not have any actual / beneficial ownership of 1% or more of securities of the subject company(ies) at the end of the month immediately preceding the date of publication of this report or date of the public appearance. However ASBL's associates may have actual / beneficial ownership of 1% or more of securities of the subject company(ies).
- ASBL or their Research Analysts (including their relatives) do not have any other material conflict of interest at the time of publication of this research report or date of the public appearance. However ASBL's associates might have an actual / potential conflict of interest (other than ownership).
- ASBL or its associates may have received compensation for investment banking, merchant banking, and brokerage services and for other products and services from the subject companies during the preceding 12 months. However, ASBL or its associates or its Research analysts (forming part of Research Desk) have not received any compensation or other benefits from the subject companies or third parties in connection with the research report. Moreover, Research Analysts have not received any compensation from the companies mentioned herein in the past twelve months.
- ASBL or their Research Analysts have not managed or co-managed public offering of securities for the subject company(ies) in the past twelve months. However ASBL's associates may have managed or co-managed public offering of securities for the subject company(ies) in the past twelve months.
- Research Analysts have not served as an officer, director or employee of the companies mentioned in the report.
- Neither ASBL nor its Research Analysts have been engaged in market making activity for the companies mentioned in the report.

Disclaimer

The research recommendation and information herein are solely for the personal information of the authorized recipient and does not construe to be an offer documents or any investment, legal or taxation advice or solicitation of any action based upon it. This report is not for public distribution or use by any person or entity, where such distribution, publication, availability or use would be contrary to law, regulation or subject to any registration or licensing requirement. We will not treat recipients as customer by virtue of their receiving this report. The report is based upon the information obtained from public sources that we consider reliable, but we do not guarantee its accuracy or completeness. ASBL shall not be in anyways responsible for any loss or damage that may arise to any such person from any inadvertent error in the information contained in this report. The recipients of this report should rely on their own investigations.