

Technical Report

Closing Brief

Benchmark Indices settled at record closing highs after investor's positively reacted to the inflation and IIP data. Inflation eased after IMD said that monsoon rains had reached the Andaman and Nicobar Island. Nifty finally settled at 9445.40 levels up by 44.50 levels or 0.47%.

Technical Build up

- ❖ Bearish candle with increase in volume
- ❖ Buy crossover in oscillators.
- ❖ Upper band of Bollinger exist at 9439
- ❖ Crucial moving average of 20/50 SMA are at 9251 and 9138
- ❖ 200 SMA trend deciding level exist at 8665

Outlook for the day

Indian Equity market settled with decent gains in a range bound session, continuing its uptrend thanks to latest inflation figures but profit taking capped the upside as session progressed. Auto stocks witnessed smart rally, Metal stocks gained following increased base metal price on LME. On the technical front, Nifty headed towards its life time high of 9450 mark. 'Bullish Flag' pattern on daily chart has a potential target to yet another milestone of 9600, This level coincides with the 161% 'Price Extension' of the entire rally (6825.80 to 8968.70) from the recent bottom of 7893.80. Hence it can be expected that the index to continue this northward rally. Immediate support is placed around 9400 levels and the next support is placed around 9350 levels. On the higher side the immediate resistance is placed around 9480-9500 levels. On the option front maximum Put OI is at 9300 followed by 9400 while maximum Call OI is at 9500 followed by 9400 strike. Fresh Put writing at 9400 strike which is shifting its support to higher zone while intact Call writing at 9500 strike is restricting its upside momentum

Technical & Derivative Report

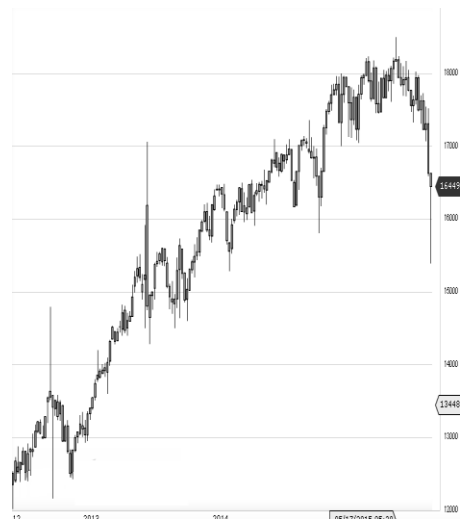
World Indices	LTP	Daily Ch(Pts)	Daily Ch(%)
Dow Jones	20981	85	0.41
Nasdaq	6149	28	0.46
S&P 500	2402	11	0.48
FTSE 100	7454	18	0.26
DAX	12807	36	0.29
Hang Seng	25300	-71	-0.28
Nikkei	19933	64	0.32
Sensex	30322	133	0.44
Nifty	9445	44	0.47

Commodity /Forex	LTP	Daily Ch(Pts)	Daily Ch(%)
Gold (\$/Oz)	1233.80	3.80	0.31
Silver (\$/Oz)	16.71	0.11	0.64
Copper(USD/lb.)	253.20	-0.70	-0.28
Brent Crude(USD/bbl)	52.08	0.26	0.50
USD/INR	64.06	-0.25	-0.39
USD/YEN	113.53	-0.26	-0.23
USD/EUR	1.0987	0.0012	0.11

Support/Resistance levels for Indian Equity Indices					
	S1	S2	CMP	R1	R2
Sensex	30170	30000	30322	30440	30570
Nifty	9400	9350	9445	9480	9520
Nifty (Fut)	9410	9360	9453	9490	9530

Pivot Level		
Sensex		30317
Nifty		9439

US: US market closed at record highs on Monday after a rise in tech and oil prices. Technically DJIA is presently trading at the 5th leg through Elliot wave count with negative divergence in oscillators.



Increase in OI with Increase in Price (Long Buildup)

Symbol	Prev OI	Curr OI	OI Chg (%)	Curr Pr.	Pr.Chg (%)
SHREEC					
EM	27000	36200	34.1	20363.9	3
PEL	676800	870000	28.6	2887	10.5
PAGEIN					
D	23650	29300	23.9	15520	3.2
MRPL	3712500	4414500	18.9	134.6	3.8
BERGEP					
AINT	1075800	1212200	12.7	262.05	1.9

Increase in OI with Decrease in Price (Short Buildup)

Symbol	Prev OI	Curr OI	OI Chg (%)	Curr Pr.	Pr.Chg (%)
COLPAL	838600	1024800	22.2	993.5	[2.5]
TITAN	5965500	7095000	18.9	485.45	[2.2]
	7641900	8968400			
IDEA	0	0	17.4	86.3	[7.0]
NESTLEI					
ND	68400	79800	16.7	6603	[3.3]
	1222830	1422090			
FORTIS	0	0	16.3	208.05	[0.6]

Nifty gained by 0.47% with Nifty future added 6.0 lakh shares in open interest and stock future added 786.4 Lakh shares in open interest.

- Nifty PCR increased to 1.25 from 1.24
- Total Nifty Calls shaded 6.3 lakh shares in open interest.
- Total Nifty Puts added 1.5 lakh shares in open interest.
- Maximum open interest (Nifty) in Calls for Jan series is at 9500 and 9300 put.
- FII's bought net Rs.235.33Cr(provisional), while DIIs sold net Rs.65.77 Cr in cash market.
- FII bought net Rs.89.63 Cr in F&O
- Securities in Ban Period: CANBK, CEATLD, IBREALEST, IFCI, JISJALEQS, JSWENERGY, KTKBANK, ORIENTBANK, SYNDIBANK & UJJIVAN

Nifty Tracker

PARTICULARS	13/05/2017	12/05/2017	11/05/2017	10/05/2017
Spot	9445.4	9400.9	9422.4	9407.3
% Change in Spot	0.47%	-0.23%	0.16%	0.97%
Nifty(FUT) May	9453.3	9414.8	9439.85	9419.2
Nifty(FUT) May Vol.	52787	91721	71500	111474
Nifty(FUT) May - OI	21110850	20614575	21136200	20665350
Nifty(FUT) June	9452.4	9415.35	9438.55	9416.45
Nifty(FUT) June Vol.	4041	3716	5217	4561
Nifty(FUT) June - OI	1708575	1608675	1566825	1431000

Trade Statistics for 13/05/2017

PARTICULARS	NO. OF CONTRACTS	TURNOVER (RS. CR.)	PUT CALL RATIO
NSE Index Futures	1,08,755	8736	-
NSE Stock Futures	6,36,143	46237	-
NSE Index Options	27,56,624	2,26,956.60	-
NSE Stock Options	4,94,082	36137	0.5
NSE F&O Total Turnover	39,95,604	318,067	1.04
NSE Cash Turnover	-	22,916.78	-
BSE Cash Turnover	-	3,471.85	-
Total Turnover	-	344455	-

FII Corner (F&O)

FII NET BUYING/SELLING & CHANGE IN OPEN INTEREST (Cr. Rupee)						
PARTICULARS	13/05/2017		12/05/2017		11/05/2017	
	Net Buying /Selling	Change In Open interest	Net Buying /Selling	Change In Open interest	Net Buying /Selling	Change In Open interest
Index Future	-117	47	-916	75	-155	834
Index option	24	626	-122	469	923	2192
Stock Future	191	650	-191	282	434	598
Stock option	-8	241	-79	537	-21	365
Total	90	1564	-1308	1364	1181	3989

Market Open Interest

ADDITION/REDUCTION IN MARKET OPEN INTEREST					
Contracts	13/05/2017	12/05/2017	11/05/2017	10/05/2017	09/05/2017
Index Futures	665	-852	542	1942	223
Index Options	1888	-193	864	1738	1323
Stock Futures	3191	-21973	15911	8895	5420
Stock Options	443	1307	1251	1341	1076
F&O Total	6187	-21711	18568.8	13916.31	8042.74

Nifty Option Open Interest Statistics

NIFTY OPTIONS HIGHEST ADDITION IN OPEN INTEREST						
Expiry	Strike	Option Type	Settlement Price	Volume	Open Interest	Change In OI
25-May-17	9400	PE	40.7	153889	4632450	826950
25-May-17	8700	PE	2	17117	1689750	259125
25-May-17	9300	PE	19.3	117635	7391850	127725
28-Sep-17	9400	CE	416	1600	120000	120000
28-Sep-17	9500	PE	261.35	1600	120000	120000
29-Jun-17	9400	PE	101.25	7100	698100	103725
29-Jun-17	9000	PE	23.05	8002	2046150	86025
25-May-17	9450	PE	58.1	15217	383250	80850
29-Jun-17	9300	PE	69.6	6026	953675	78825
29-Jun-17	9100	PE	33.1	5036	965850	62025

NIFTY OPTIONS HIGHEST REDUCTION IN OPEN INTEREST						
Expiry	Strike	Option Type	Settlement Price	Volume	Open Interest	Change In OI
25-May-17	9200	PE	9.9	101959	4637025	-1282950
25-May-17	9100	PE	5.75	58448	4257075	-456675
25-May-17	9500	CE	36.4	137527	6724575	-355500
25-May-17	9400	CE	89.7	103835	4098075	-321075
25-May-17	9300	CE	166.35	18433	2045850	-274500
25-May-17	9450	CE	58.85	23494	779550	-104925
25-May-17	9000	CE	451.2	1039	701025	-60450
25-May-17	8800	PE	2.2	9631	2126325	-55800
25-May-17	9100	CE	352.2	1258	602625	-53625
25-May-17	9150	PE	7.3	3272	239250	-53625

Stock Option Open Interest Statistics

STOCK OPTIONS WITH HIGHEST ADDITION IN OPEN INTEREST							
Symbol	Expiry	Strike	Option Type	Settl. Price	Volume	Open Interest	Change in OI
SUZLON	25-May-17	22.5	CE	0.25	1171	37170000	8760000
SUZLON	25-May-17	20	CE	0.65	801	17520000	6120000
SOUTHBANK	25-May-17	30	CE	0.1	577	11798196	4772304
IDEA	25-May-17	100	CE	0.25	4134	9709000	3780000
IDEA	25-May-17	90	CE	1.1	2788	5705000	3430000
SOUTHBANK	25-May-17	27.5	CE	0.2	1390	13024413	3048972
SUZLON	25-May-17	25	CE	0.1	413	20280000	2850000
SOUTHBANK	25-May-17	25	CE	0.65	714	7191597	2684421
SUZLON	25-May-17	20	PE	0.9	428	15990000	2370000
IDEA	25-May-17	75	PE	0.15	884	3465000	2247000

STOCK OPTIONS WITH HIGHEST REDUCTION IN OPEN INTEREST							
Symbol	Expiry	Strike	Option Type	Settl. Price	Volume	Open Int.	Change in OI
IDEA	25-May-17	85	PE	1.85	2755	3234000	-1365000
HINDALCO	25-May-17	200	CE	4.55	3209	3899000	-1253000
DLF	25-May-17	210	CE	7.35	1899	3030000	-935000
GMRINFRA	25-May-17	17.5	PE	0.7	60	7740000	-900000
TATASTEEL	25-May-17	450	CE	15.2	4450	1652000	-870000
TATASTEEL	25-May-17	440	CE	21.8	1398	1376000	-784000
HINDALCO	25-May-17	195	CE	7.1	1433	1039500	-752500
DLF	25-May-17	200	CE	13.5	308	3695000	-705000
TV18BRDCST	25-May-17	45	PE	3.4	42	510000	-663000
HINDALCO	25-May-17	190	CE	10.5	692	700000	-521500

Research Team

Name	Designation	Email ID	Contact No.
Paras Bothra	President Equity Research	paras@ashikagroup.com	+91 22 6611 1704
Krishna Kumar Agarwal	Equity Research Analyst	krishna.a@ashikagroup.com	+91 33 4036 0646
Partha Mazumder	Equity Research Analyst	partha.m@ashikagroup.com	+91 33 4036 0647
Arijit Malakar	Equity Research Analyst	amalakar@ashikagroup.com	+91 33 4036 0644
Kapil Jagasia, CFA	Equity Research Analyst	kapil.j@ashikagroup.com	+91 22 6611 1715
Tirthankar Das	Technical & Derivative Analyst	tirthankar.d@ashikagroup.com	+91 33 4036 0645

Ashika Stock Broking Limited ("ASBL") or Research Entity has started its journey in the year 1994 and is engaged in the business of broking services, depository services, distributor of financial products (Mutual fund, IPO & Bonds). This research report has been prepared and distributed by ASBL in the sole capacity of a Research Analyst (Reg No. INH000000206) of SEBI (Research Analyst) Regulations 2014. ASBL is a wholly owned subsidiary of Ashika Global Securities (P) Ltd., a RBI registered non-deposit taking NBFC Company. Ashika group (details is enumerated on our website www.ashikagroup.com) is an integrated financial service provider inter alia engaged in the business of Investment Banking, Corporate Lending, Commodity Broking, Debt Syndication & Other Advisory Services.

There were no significant and material disciplinary actions against ASBL taken by any regulatory authority during last three years.

Disclosure

ASBL or its associates, its Research Analysts (including their relatives) may have financial interest in the subject company(ies). However, the said financial interest is not limited to having an open stock market position in /acting as advisor to /having a loan transaction with the subject company(ies) apart from registration as clients.

- ASBL or its Research Analysts (including their relatives) do not have any actual / beneficial ownership of 1% or more of securities of the subject company(ies) at the end of the month immediately preceding the date of publication of this report or date of the public appearance. However ASBL's associates may have actual / beneficial ownership of 1% or more of securities of the subject company(ies).
- ASBL or their Research Analysts (including their relatives) do not have any other material conflict of interest at the time of publication of this research report or date of the public appearance. However ASBL's associates might have an actual / potential conflict of interest (other than ownership).
- ASBL or its associates may have received compensation for investment banking, merchant banking, and brokerage services and for other products and services from the subject companies during the preceding 12 months. However, ASBL or its associates or its Research analysts (forming part of Research Desk) have not received any compensation or other benefits from the subject companies or third parties in connection with the research report. Moreover, Research Analysts have not received any compensation from the companies mentioned herein in the past twelve months.
- ASBL or their Research Analysts have not managed or co-managed public offering of securities for the subject company(ies) in the past twelve months. However ASBL's associates may have managed or co-managed public offering of securities for the subject company(ies) in the past twelve months.
- Research Analysts have not served as an officer, director or employee of the companies mentioned in the report.
- Neither ASBL nor its Research Analysts have been engaged in market making activity for the companies mentioned in the report.

Disclaimer

The research recommendation and information herein are solely for the personal information of the authorized recipient and does not construe to be an offer documents or any investment, legal or taxation advice or solicitation of any action based upon it. This report is not for public distribution or use by any person or entity, where such distribution, publication, availability or use would be contrary to law, regulation or subject to any registration or licensing requirement. We will not treat recipients as customer by virtue of their receiving this report. The report is based upon the information obtained from public sources that we consider reliable, but we do not guarantee its accuracy or completeness. ASBL shall not be in anyways responsible for any loss or damage that may arise to any such person from any inadvertent error in the information contained in this report. The recipients of this report should rely on their own investigations.