

## Technical Report

### Closing Brief

The index made new lifetime high again but unable to sustain its gain turned sideways. Nifty finally settled the day higher by 10 points at 10240.95 levels.

### Technical Build up

- ❖ Bullish candle with decrease in volume
- ❖ Buy crossover in oscillators.
- ❖ Upper band of Bollinger exist at 10270
- ❖ Crucial moving average of 20/50 SMA are at 9984 and 9947
- ❖ 200 SMA trend deciding level exist at 9373

### Outlook for the day

Indian Equity market ended almost unchanged in a dull trading session, taking a breather after the recent up move, long holiday in the next couple of days and quarterly results sessions lead to a stock specific action. However optimism prevailed on strong buying by domestic investors. On the technical front, Nifty made a Doji candlestick pattern in daily chart indicating indecisiveness between bulls and bears and normally witnessed as market reaches overbought zones. Markets may undergo a correction in short-term if they were to close below 10200 levels in next trading session. During the day, immediate support around 10200 levels and next support at 10175 levels. Immediate resistance is around 10250 and next resistance is around 10300 levels. On the option front maximum Put OI is at 10000 followed by 9900 strike while maximum Call OI is at 10200 followed by 10300 strikes

## Technical & Derivative Report

World Indices	LTP	Daily Ch(Pts)	Daily Ch(%)
Dow Jones	22997	40	0.18
Nasdaq	6623	-	-0.01
S&P 500	2559	1	0.07
FTSE 100	7516	-10	-0.14
DAX	12995	-8	-0.07
Hang Seng	28686	-10	-0.04
Nikkei	21360	24	0.11
Sensex	32609	-24	-0.08
Nifty	10234	3	0.04

Commodity /Forex	LTP	Daily 1.1Ch(Pts)	Daily Ch(%)
Gold (\$/Oz)	1290.20	4.00	0.31
Silver (\$/Oz)	17.11	0.07	0.40
Copper(USD/lb.)	321.15	1.60	0.50
Brent			
Crude(USD/bbl)	58.29	0.41	0.71
USD/INR	65.02	0.30	0.47
USD/YEN	112.16	-0.04	-0.04
USD/EUR	1.1774	0.0008	0.07

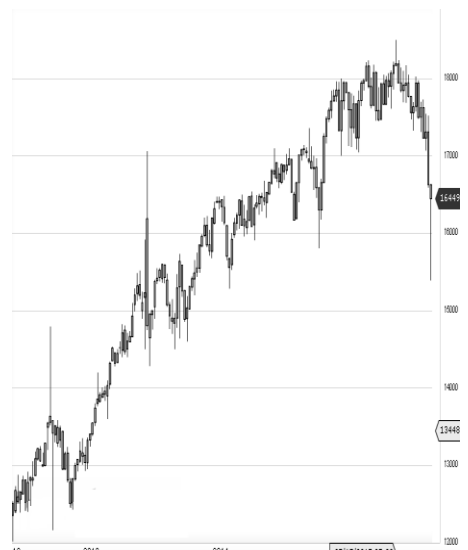
#### Support/Resistance levels for Indian Equity Indices

	S1	S2	CMP	R1	R2
Sensex	32490	32410	32609	32660	32830
Nifty	10200	10175	10234	10250	10300
Nifty (Fut)	10220	10195	10253	10270	10320

#### Pivot Level

Sensex	32621
Nifty	10232

**US:** US Market rose on Tuesday, and broke above 23,000 for the first time on an intraday basis. Technically DJIA is presently trading at the 5th leg through Elliot wave count with negative divergence in oscillators.



Increase in OI with Increase in Price (Long Buildup)						Increase in OI with Decrease in Price (Short Buildup)					
Symbol	Prev OI	Curr OI	OI Chg (%)	Curr Pr.	Pr.Chg (%)	Symbol	Prev OI	Curr OI	OI Chg (%)	Curr Pr.	Pr.Chg (%)
TORNTP						ZEEL	6973200	8461700	21.4	497.4	[3.7]
HARM	276000	372800	35.1	1336	3.6	STAR	3609500	4028500	11.6	881.1	[0.2]
ACC	1706000	2121600	24.4	1790.75	0	DCBBAN					
NBCC	3798000	4503000	18.6	251.85	4.7	K	6885000	7614000	10.6	184.45	[3.5]
BEML	2116800	2449800	15.7	1783.9	2.9	AXISBA	3669240	4050360			
HEXAW						NK	0	0	10.4	513.1	[1.7]
ARE	2091000	2352000	12.5	282.25	1.8	MOTHE	1172250	1291875			
						RSUMI	0	0	10.2	355	[0.2]

Nifty gained by 0.04% with Nifty future added 2.9 lakh shares in open interest and stock future added 358.2 Lakh shares in open interest.

- Nifty PCR decreased to 1.65 from 1.67
- Total Nifty Calls added 8.8 lakh shares in open interest.
- Total Nifty Puts added 4.6 lakh shares in open interest.
- Maximum open interest (Nifty) in Calls for Oct series is at 10200 and 10000 put.
- FII's sold net Rs.484.92 Cr(provisional), while DIIs bought net Rs.809.03 Cr in cash market.
- FII bought net Rs.1089.23 Cr in F&O
- Securities in Ban Period: BEML, DHFL, IBREALEST, INFIBEAM, JPASSOCIAT, JSWENERGY & RCOM

## Nifty Tracker

PARTICULARS	17/10/2017	16/10/2017	13/10/2017	12/10/2017
Spot	10234.45	10230.85	10167.45	10096.4
% Change in Spot	0.04%	0.62%	0.70%	1.12%
Nifty(FUT) Oct	10253.7	10255.95	10192.4	10111.4
Nifty(FUT) Oct Vol.	68350	120722	133120	115831
Nifty(FUT) Oct - OI	26799150	26752725	26660475	26359725
Nifty(FUT) Nov	10285.3	10287.3	10224.35	10140.6
Nifty(FUT) Nov Vol.	5549	8024	7141	4126
Nifty(FUT) Nov - OI	1688175	1544925	1382850	1262550

## Trade Statistics for 17/10/2017

PARTICULARS	NO. OF CONTRACTS	TURNOVER (RS. CR.)	PUT CALL RATIO
NSE Index Futures	1,37,683	11883	-
NSE Stock Futures	6,10,986	47332	-
NSE Index Options	59,05,362	5,43,144.44	-
NSE Stock Options	4,72,320	38276	0.44
NSE F&O Total Turnover	71,26,351	640,635	0.85
NSE Cash Turnover	-	28,041.79	-
BSE Cash Turnover	-	3,135.25	-
Total Turnover	-	671812	-

## FII Corner (F&O)

FII NET BUYING/SELLING & CHANGE IN OPEN INTEREST (Cr. Rupee)						
PARTICULARS	17/10/2017		16/10/2017		13/10/2017	
	Net Buying /Selling	Change In Open interest	Net Buying /Selling	Change In Open interest	Net Buying /Selling	Change In Open interest
Index Future	258	593	2486	2253	808	2310
Index option	927	882	-947	2456	207	5499
Stock Future	-8	383	-175	958	363	1191
Stock option	-88	497	-142	284	-174	437
Total	1089	2355	1222	5952	1204	9436

## Market Open Interest

ADDITION/REDUCTION IN MARKET OPEN INTEREST					
Contracts	17/10/2017	16/10/2017	13/10/2017	12/10/2017	11/10/2017
Index Futures	227	192	879	1021	1729
Index Options	1611	734	1150	2892	-1102
Stock Futures	6908	9710	-18126	16931	13341
Stock Options	1477	1384	622	933	1154
F&O Total	10224	12020	-15475.23	21777.01	15121.94

## Nifty Option Open Interest Statistics

NIFTY OPTIONS HIGHEST ADDITION IN OPEN INTEREST						
Expiry	Strike	Option Type	Settlement Price	Volume	Open Interest	Change In OI
26-Oct-17	10250	PE	61.75	28473	989625	372900
26-Oct-17	10200	PE	46.7	206241	4838400	324300
26-Oct-17	10600	CE	2.5	42867	1194975	273000
31-Dec-20	9000	PE	276.8	2767	213375	207525
26-Oct-17	10300	CE	40.4	253768	3139950	188850
26-Oct-17	10250	CE	63	43505	877200	171900
30-Nov-17	10000	PE	63.6	12852	1674525	127875
26-Oct-17	10300	PE	88	92104	1244700	126000
30-Nov-17	10100	PE	81.25	11195	1069275	121200
30-Nov-17	9800	PE	35.45	6088	670575	114225

NIFTY OPTIONS HIGHEST REDUCTION IN OPEN INTEREST						
Expiry	Strike	Option Type	Settlement Price	Volume	Open Interest	Change In OI
26-Oct-17	9900	PE	12.6	51373	5379300	-183450
26-Oct-17	9800	PE	9.3	32823	4901550	-165900
26-Oct-17	10100	PE	26.9	142196	4729800	-143700
26-Oct-17	10000	CE	262.1	9996	2450925	-141300
26-Oct-17	9900	CE	359.95	4968	1857300	-135525
26-Oct-17	11000	CE	0.5	4352	1100025	-131550
26-Oct-17	9500	PE	4.25	14458	3727050	-97500
26-Oct-17	9600	PE	5.15	12627	2586300	-89850
26-Oct-17	11000	PE	742.3	1861	1437675	-89625
26-Oct-17	8200	CE	2043.95	1288	2296350	-84675

## Stock Option Open Interest Statistics

STOCK OPTIONS WITH HIGHEST ADDITION IN OPEN INTEREST							
Symbol	Expiry	Strike	Option Type	Settl. Price	Volume	Open Interest	Change in OI
FEDERALBNK	26-Oct-17	122.5	PE	1.05	440	3630000	2629000
FEDERALBNK	26-Oct-17	127.5	CE	2.1	886	4312000	2409000
IDEA	26-Oct-17	100	CE	0.65	1921	2975000	2247000
FEDERALBNK	26-Oct-17	132.5	CE	0.7	465	2849000	2244000
IDEA	26-Oct-17	95	CE	1.35	3610	2751000	2107000
IDEA	26-Oct-17	85	PE	1.05	1486	2226000	1785000
FEDERALBNK	26-Oct-17	130	CE	1.3	3338	7073000	1727000
IDEA	26-Oct-17	90	CE	2.95	5382	3955000	1617000
SUZLON	26-Oct-17	17.5	CE	0.1	151	29400000	1470000
AXISBANK	26-Oct-17	530	CE	7.55	4437	2688000	1419600

STOCK OPTIONS WITH HIGHEST REDUCTION IN OPEN INTEREST							
Symbol	Expiry	Strike	Option Type	Settl. Price	Volume	Open Int.	Change in OI
SOUTHBANK	26-Oct-17	32.5	CE	0.6	509	14582040	-3015831
IDEA	26-Oct-17	85	CE	5.95	2555	1806000	-2198000
IDEA	26-Oct-17	80	CE	10.35	491	1673000	-1449000
FEDERALBNK	26-Oct-17	120	CE	6.65	324	3003000	-1430000
ICICIBANK	26-Oct-17	265	PE	1.4	1034	1196250	-1210000
IDEA	26-Oct-17	82.5	CE	8.15	608	777000	-1176000
SUZLON	26-Oct-17	15	CE	0.8	84	7350000	-1140000
FEDERALBNK	26-Oct-17	125	CE	3.2	982	4565000	-968000
DLF	26-Oct-17	175	CE	6.8	958	1035000	-865000
JPASSOCIAT	26-Oct-17	22.5	CE	0.4	21	17136000	-748000

## Research Team

Name	Designation	Email ID	Contact No.
Paras Bothra	President Equity Research	paras@ashikagroup.com	+91 22 6611 1704
Krishna Kumar Agarwal	Equity Research Analyst	krishna.a@ashikagroup.com	+91 33 4036 0646
Partha Mazumder	Equity Research Analyst	partha.m@ashikagroup.com	+91 33 4036 0647
Arijit Malakar	Equity Research Analyst	amalakar@ashikagroup.com	+91 33 4036 0644
Kapil Jagasia	Equity Research Analyst	kapil.j@ashikagroup.com	+91 22 6611 1715
Tirthankar Das	Technical & Derivative Analyst	tirthankar.d@ashikagroup.com	+91 33 4036 0645

Ashika Stock Broking Limited ("ASBL") or Research Entity has started its journey in the year 1994 and is engaged in the business of broking services, depository services, distributor of financial products (Mutual fund, IPO & Bonds). This research report has been prepared and distributed by ASBL in the sole capacity of a Research Analyst (Reg No. INH00000206) of SEBI (Research Analyst) Regulations 2014. ASBL is a wholly owned subsidiary of Ashika Global Securities (P) Ltd., a RBI registered non-deposit taking NBFC Company. Ashika group (details is enumerated on our website [www.ashikagroup.com](http://www.ashikagroup.com)) is an integrated financial service provider inter alia engaged in the business of Investment Banking, Corporate Lending, Commodity Broking, Debt Syndication & Other Advisory Services.

There were no significant and material disciplinary actions against ASBL taken by any regulatory authority during last three years.

### Disclosure

ASBL or its associates, its Research Analysts (including their relatives) may have financial interest in the subject company(ies). However, the said financial interest is not limited to having an open stock market position in /acting as advisor to /having a loan transaction with the subject company(ies) apart from registration as clients.

- 1) ASBL or its Research Analysts (including their relatives) do not have any actual / beneficial ownership of 1% or more of securities of the subject company(ies) at the end of the month immediately preceding the date of publication of this report or date of the public appearance. However ASBL's associates may have actual / beneficial ownership of 1% or more of securities of the subject company(ies).
- 2) ASBL or their Research Analysts (including their relatives) do not have any other material conflict of interest at the time of publication of this research report or date of the public appearance. However ASBL's associates might have an actual / potential conflict of interest (other than ownership).
- 3) ASBL or its associates may have received compensation for investment banking, merchant banking, and brokerage services and for other products and services from the subject companies during the preceding 12 months. However, ASBL or its associates or its Research analysts (forming part of Research Desk) have not received any compensation or other benefits from the subject companies or third parties in connection with the research report. Moreover, Research Analysts have not received any compensation from the companies mentioned herein in the past twelve months.
- 4) ASBL or their Research Analysts have not managed or co-managed public offering of securities for the subject company(ies) in the past twelve months. However ASBL's associates may have managed or co-managed public offering of securities for the subject company(ies) in the past twelve months.
- 5) Research Analysts have not served as an officer, director or employee of the companies mentioned in the report.
- 6) Neither ASBL nor its Research Analysts have been engaged in market making activity for the companies mentioned in the report.

### Disclaimer

The research recommendation and information herein are solely for the personal information of the authorized recipient and does not construe to be an offer documents or any investment, legal or taxation advice or solicitation of any action based upon it. This report is not for public distribution or use by any person or entity, where such distribution, publication, availability or use would be contrary to law, regulation or subject to any registration or licensing requirement. We will not treat recipients as customer by virtue of their receiving this report. The report is based upon the information obtained from public sources that we consider reliable, but we do not guarantee its accuracy or completeness. ASBL shall not be in anyways responsible for any loss or damage that may arise to any such person from any inadvertent error in the information contained in this report. The recipients of this report should rely on their own investigations.