

Technical Report

Closing Brief

Nifty in yesterday's session witnessed some selling after being jubilant for straight sessions. The sell-off took place as political turmoil in White House spooked investors and dragged the global market. Weakness in rupee also dragged the market lower. Nifty finally settled at 9429.95 levels down by 96.30 levels or - 1.01%.

Technical Build up

- ❖ bearish candle with increase in volume
- ❖ Sell crossover in oscillators.
- ❖ Upper band of Bollinger exist at 9547
- ❖ Crucial moving average of 20/50 SMA are at 9341 and 9203
- ❖ 200 SMA trend deciding level exist at 8692

Outlook for the day

Indian Equity market reacted sharply to the news that the US President tried to influence federal investigation, raising doubts over his policies ahead. Most of the sectors witnessed profit booking barring the IT. Auto, Metal, Banking, Cement, Realty and Capital Goods stocks were major losers. On the technical front, slipped below its crucial support level of 9,500-9,450. It formed a Bearish candle "Shooting Star" following previous days. Long trendline since December 2016 though remains intact and a decisive close below 9375 would be considered as a change in trend. Immediate support is placed around 9370 levels while the next support is placed around 9320 levels. On the higher side the immediate resistance is placed around 9470 levels and the next resistance is placed around 9520 levels. On the option front maximum Put OI is at 9300 followed by 9400 strike while maximum Call OI is at 9500 followed by 9600 strike, Call Writing was seen at strike prices 9,400, Call unwinding was seen at strike prices 9,300 and Put Unwinding was seen at strike prices 9,500

Technical & Derivative Report

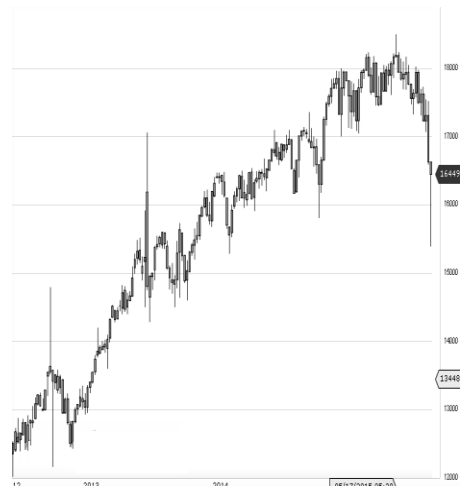
World Indices	LTP	Daily Ch(Pts)	Daily Ch(%)
Dow Jones	20663	56	0.27
Nasdaq	6055	43	0.73
S&P 500	2365	8	0.37
FTSE 100	7436	-67	-0.89
DAX	12590	-41	-0.33
Hang Seng	25176	39	0.16
Nikkei	19517	-36	-0.19
Sensex	30434	-223	-0.73
Nifty	9429	-96	-1.01

Commodity /Forex	LTP	Daily Ch(Pts)	Daily Ch(%)
Gold (\$/Oz)	1249.50	-3.30	-0.26
Silver (\$/Oz)	16.62	-0.05	-0.30
Copper(USD/lb.)	253.45	0.30	0.12
Brent Crude(USD/bbl)	52.68	0.17	0.32
USD/INR	64.84	0.68	1.07
USD/YEN	111.18	-0.31	-0.28
USD/EUR	1.1109	0.0006	0.05

Support/Resistance levels for Indian Equity Indices					
	S1	S2	CMP	R1	R2
Sensex	30230	30070	30434	30570	30735
Nifty	9370	9320	9429	9470	9520
Nifty (Fut)	9380	9330	9440	9480	9530

Pivot Level		
Sensex		30468
Nifty		9445

US: US market closed higher on Thursday, recovering from their worst day of 2017, as investors assessed President Donald Trump's chances of moving forward with his pro-growth agenda. Technically DJIA is presently trading at the 5th leg through Elliot wave count with negative divergence in oscillators.



Increase in OI with Increase in Price (Long Buildup)						Increase in OI with Decrease in Price (Short Buildup)					
Symbol	Prev OI	Curr OI	OI Chg (%)	Curr Pr.	Pr.Chg (%)	Symbol	Prev OI	Curr OI	OI Chg (%)	Curr Pr.	Pr.Chg (%)
CEATLT	1721300	2020900	17.4	1756.7	2.9	GODREJ	552000	640800	16.1	1776.6	[4.7]
D	1157160	1261080				CP	1857200	2114800	13.9	1252	[2.1]
WIPRO	0	0	9	523	2.6	APOLLO	4275200	4788800			
HEXAW	2469000	2655000	7.5	255.4	1.2	HOSP	0	0	12	69.05	[9.3]
ARE						IDBI					
CUMMI	722400	762000	5.5	1057	3.6	HCLTEC	6333600	7043400	11.2	841.6	[0.6]
NSIND	5362250	5625750	4.9	2517	2.7	H	3906000	4296600	10	1069	[5.0]
TCS						BHARAT FORG					

Nifty declined by 1.01% with Nifty future shaded 19.3 lakh shares in open interest and stock future added 84.1 Lakh shares in open interest.

- Nifty PCR increased to 1.26 from 1.40
- Total Nifty Calls added 35.7 lakh shares in open interest.
- Total Nifty Puts shaded 44.5 lakh shares in open interest.
- Maximum open interest (Nifty) in Calls for May series is at 9500 and 9300 put.
- FII's sold net Rs. 360.59 Cr(provisional), while DIIs bought net Rs.897.96 Cr in cash market.
- FII bought net Rs.1250.20 Cr in F&O
- Securities in Ban Period: BHARATFIN, CANBK, CAPF, CEATLTD, CESC, HDIL, ICIL, IFCI, INFIBEAM, JINDALSTEL, JISJALEQS, JPASSOCIAT, SWENERGY, ORIENTBANK & TV18BRDCAST

Nifty Tracker

PARTICULARS	18/05/2017	17/05/2017	16/05/2017	15/05/2017
Spot	9429.45	9525.75	9512.25	9445.4
% Change in Spot	-1.01%	0.14%	0.71%	0.47%
Nifty(FUT) May	9440.7	9533.75	9522.15	9453.3
Nifty(FUT) May Vol.	134391	73353	107373	52787
Nifty(FUT) May - OI	20046075	22242975	21739800	21110850
Nifty(FUT) June	9441.9	9532.85	9520.75	9452.4
Nifty(FUT) June Vol.	12920	6618	8135	4041
Nifty(FUT) June - OI	2287050	2051100	1909800	1708575

Trade Statistics for 18/05/2017

PARTICULARS	NO. OF CONTRACTS	TURNOVER (RS. CR.)	PUT CALL RATIO
NSE Index Futures	2,25,641	17480	-
NSE Stock Futures	8,27,215	60696	-
NSE Index Options	86,47,197	7,37,288.17	-
NSE Stock Options	6,64,995	49539	0.5
NSE F&O Total Turnover	1,03,65,048	442,262	0.98
NSE Cash Turnover	-	28,180.87	-
BSE Cash Turnover	-	4,311.27	-
Total Turnover	-	474754	-

FII Corner (F&O)

FII NET BUYING/SELLING & CHANGE IN OPEN INTEREST (Cr. Rupee)						
PARTICULARS	18/05/2017		17/05/2017		16/05/2017	
	Net Buying /Selling	Change In Open interest	Net Buying /Selling	Change In Open interest	Net Buying /Selling	Change In Open interest
Index Future	-141	-375	-8	587	-22	443
Index option	2685	-1232	24	3918	-437	2213
Stock Future	-1124	-1550	-21	1153	144	823
Stock option	-170	207	-111	379	7	405
Total	1250	-2950	-116	6037	-308	3884

Market Open Interest

ADDITION/REDUCTION IN MARKET OPEN INTEREST					
Contracts	18/05/2017	17/05/2017	16/05/2017	15/05/2017	12/05/2017
Index Futures	-2267	676	1156	665	-852
Index Options	-3126	1878	1118	1888	-193
Stock Futures	9312	7271	7422	3191	-21973
Stock Options	1030	215	408	443	1307
F&O Total	4949	10041	10103.78	6187.12	-21711.4

Nifty Option Open Interest Statistics

NIFTY OPTIONS HIGHEST ADDITION IN OPEN INTEREST						
Expiry	Strike	Option Type	Settlement Price	Volume	Open Interest	Change In OI
25-May-17	9500	CE	29.25	336189	6187800	941775
25-May-17	9400	CE	78.25	112289	3710100	620625
25-May-17	9450	CE	49.3	41601	1099725	534900
25-May-17	9550	CE	15	78076	1706100	354825
27-Jul-17	8500	CE	951	4001	526875	300075
29-Jun-17	9300	PE	78.85	22513	1526975	293025
25-May-17	9600	CE	7.3	240065	4734450	245625
29-Jun-17	9400	PE	110.15	22414	1186125	221550
29-Jun-17	9700	CE	30.75	20708	1798500	210825
29-Jun-17	9600	CE	56.45	21165	1681950	194625

NIFTY OPTIONS HIGHEST REDUCTION IN OPEN INTEREST						
Expiry	Strike	Option Type	Settlement Price	Volume	Open Interest	Change In OI
25-May-17	9500	PE	85.9	265925	3302625	-1915950
25-May-17	9400	PE	40.8	378387	5608050	-1356750
25-May-17	9300	PE	19.25	236111	6757275	-564675
25-May-17	9450	PE	58.85	74386	910875	-468450
25-May-17	9600	PE	161.95	43867	566325	-457950
25-May-17	9200	PE	9.5	116504	4515225	-393675
25-May-17	8500	CE	937.7	4587	677625	-269850
25-May-17	9550	PE	120.6	9460	225075	-194550
25-May-17	9200	CE	246.65	3758	710250	-133425
25-May-17	9300	CE	155.5	13707	1578900	-113550

Stock Option Open Interest Statistics

STOCK OPTIONS WITH HIGHEST ADDITION IN OPEN INTEREST							
Symbol	Expiry	Strike	Option Type	Settl. Price	Volume	Open Interest	Change in OI
JPASSOCIAT	25-May-17	15	CE	0.15	1062	32028000	6596000
SUZLON	25-May-17	22.5	CE	0.3	1224	49530000	6000000
JPASSOCIAT	25-May-17	12.5	PE	0.2	231	9384000	2992000
BANKBARODA	25-May-17	200	CE	3.2	4032	5124000	2306500
PNB	25-May-17	170	CE	0.75	3481	7336000	2247000
JPASSOCIAT	29-Jun-17	15	CE	0.6	58	2244000	2176000
JPASSOCIAT	25-May-17	12.5	CE	0.7	695	8296000	1836000
PNB	25-May-17	165	CE	1.5	2182	2702000	1585500
SBIN	25-May-17	310	CE	4.55	4423	7866000	1527000
BANKBARODA	25-May-17	210	CE	1.5	1519	2537500	1480500

STOCK OPTIONS WITH HIGHEST REDUCTION IN OPEN INTEREST							
Symbol	Expiry	Strike	Option Type	Settl. Price	Volume	Open Int.	Change in OI
ICICIBANK	25-May-17	290	CE	18.15	455	3137500	-870000
HDIL	25-May-17	100	CE	0.65	208	4280000	-832000
SUZLON	25-May-17	22.5	PE	2.75	47	1980000	-810000
TATASTEEL	25-May-17	480	PE	5.45	3684	1392000	-802000
PNB	25-May-17	165	PE	7.65	746	1379000	-647500
IFCI	25-May-17	35	CE	0.05	50	9812000	-616000
ALBK	25-May-17	85	PE	2.8	233	640000	-590000
GMRINFRA	25-May-17	20	CE	0.05	59	20970000	-540000
FEDERALBNK	25-May-17	115	PE	4.65	159	1463000	-528000
FEDERALBNK	25-May-17	120	CE	0.5	334	4851000	-517000

Research Team

Name	Designation	Email ID	Contact No.
Paras Bothra	President Equity Research	paras@ashikagroup.com	+91 22 6611 1704
Krishna Kumar Agarwal	Equity Research Analyst	krishna.a@ashikagroup.com	+91 33 4036 0646
Partha Mazumder	Equity Research Analyst	partha.m@ashikagroup.com	+91 33 4036 0647
Arijit Malakar	Equity Research Analyst	amalakar@ashikagroup.com	+91 33 4036 0644
Kapil Jagasia, CFA	Equity Research Analyst	kapil.j@ashikagroup.com	+91 22 6611 1715
Tirthankar Das	Technical & Derivative Analyst	tirthankar.d@ashikagroup.com	+91 33 4036 0645

Ashika Stock Broking Limited ("ASBL") or Research Entity has started its journey in the year 1994 and is engaged in the business of broking services, depository services, distributor of financial products (Mutual fund, IPO & Bonds). This research report has been prepared and distributed by ASBL in the sole capacity of a Research Analyst (Reg No. INH00000206) of SEBI (Research Analyst) Regulations 2014. ASBL is a wholly owned subsidiary of Ashika Global Securities (P) Ltd., a RBI registered non-deposit taking NBFC Company. Ashika group (details is enumerated on our website www.ashikagroup.com) is an integrated financial service provider inter alia engaged in the business of Investment Banking, Corporate Lending, Commodity Broking, Debt Syndication & Other Advisory Services.

There were no significant and material disciplinary actions against ASBL taken by any regulatory authority during last three years.

Disclosure

ASBL or its associates, its Research Analysts (including their relatives) may have financial interest in the subject company(ies). However, the said financial interest is not limited to having an open stock market position in /acting as advisor to /having a loan transaction with the subject company(ies) apart from registration as clients.

- 1) ASBL or its Research Analysts (including their relatives) do not have any actual / beneficial ownership of 1% or more of securities of the subject company(ies) at the end of the month immediately preceding the date of publication of this report or date of the public appearance. However ASBL's associates may have actual / beneficial ownership of 1% or more of securities of the subject company(ies).
- 2) ASBL or their Research Analysts (including their relatives) do not have any other material conflict of interest at the time of publication of this research report or date of the public appearance. However ASBL's associates might have an actual / potential conflict of interest (other than ownership).
- 3) ASBL or its associates may have received compensation for investment banking, merchant banking, and brokerage services and for other products and services from the subject companies during the preceding 12 months. However, ASBL or its associates or its Research analysts (forming part of Research Desk) have not received any compensation or other benefits from the subject companies or third parties in connection with the research report. Moreover, Research Analysts have not received any compensation from the companies mentioned herein in the past twelve months.
- 4) ASBL or their Research Analysts have not managed or co-managed public offering of securities for the subject company(ies) in the past twelve months. However ASBL's associates may have managed or co-managed public offering of securities for the subject company(ies) in the past twelve months.
- 5) Research Analysts have not served as an officer, director or employee of the companies mentioned in the report.
- 6) Neither ASBL nor its Research Analysts have been engaged in market making activity for the companies mentioned in the report.

Disclaimer

The research recommendation and information herein are solely for the personal information of the authorized recipient and does not construe to be an offer documents or any investment, legal or taxation advice or solicitation of any action based upon it. This report is not for public distribution or use by any person or entity, where such distribution, publication, availability or use would be contrary to law, regulation or subject to any registration or licensing requirement. We will not treat recipients as customer by virtue of their receiving this report. The report is based upon the information obtained from public sources that we consider reliable, but we do not guarantee its accuracy or completeness. ASBL shall not be in anyways responsible for any loss or damage that may arise to any such person from any inadvertent error in the information contained in this report. The recipients of this report should rely on their own investigations.