

# Technical Report

## Closing Brief

Benchmark index started the session on a positive note taking cues from the global markets but remained range bound throughout the session. Nifty ended at 10147.55 with a loss of 5.55 points or 0.05% on closing Basis.

## Technical Build up

- ❖ Bearish Shooting Star candle with increase in volume
- ❖ Buy crossover in oscillators.
- ❖ Lower band of Bollinger exist at 10182
- ❖ Crucial moving average of 20/50 SMA are at 9962 and 9936
- ❖ 200 SMA trend deciding level exist at 9206

## Outlook for the day

Indian Equity market closed flat in a range bound session today as participants booked some profit ahead of the US Fed meet. Pharma stocks witnessed profit booking after a positive opening. PSU Banking stocks declined. Metal and Capital Goods stocks witnessed profit booking. Oil & Gas and Realty stocks witnessed smart rally. On the technical front, formation of a bearish candle after a bullish rally is a sign of caution and does not augur well for the bulls. It partially filled its recent gap up zone of 10115-10131 and now requires a follow up move to extend its positive momentum. During the day, immediate support is at 10130 below which next support is placed at 10050 and immediate resistance is pegged at 10200 followed by 10250. On the option front maximum Put OI at 10000 strike while maximum Call OI is at 10200 followed by 10300 strikes

## Technical & Derivative Report

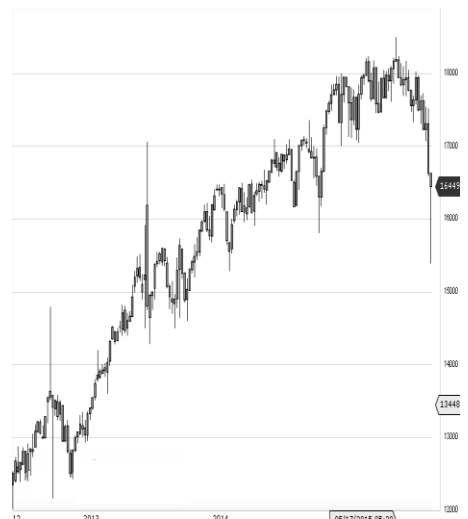
World Indices	LTP	Daily Ch(Pts)	Daily Ch(%)
Dow Jones	22370	39	0.18
Nasdaq	6461	6	0.10
S&P 500	2506	2	0.11
FTSE 100	7275	21	0.30
DAX	12561	2	0.02
Hang Seng	28112	61	0.22
Nikkei	20295	-3	-0.02
Sensex	32402	-21	-0.07
Nifty	10147	-5	-0.05

Commodity /Forex	LTP	Daily 1.1Ch(Pts)	Daily Ch(%)
Gold (\$/Oz)	1314.30	3.70	0.28
Silver (\$/Oz)	17.33	0.05	0.30
Copper(USD/lb.)	297.20	0.25	0.08
Brent			
Crude(USD/bbl)	55.38	0.24	0.44
USD/INR	64.32	0.18	0.29
USD/YEN	111.52	-0.07	-0.06
USD/EUR	1.2013	0.0019	0.16

Support/Resistance levels for Indian Equity Indices					
	S1	S2	CMP	R1	R2
Sensex	32345	32080	32402	32580	32750
Nifty	10130	10050	10147	10200	10250
Nifty (Fut)	10150	10070	10168	10220	10270

Pivot Level		
Sensex		32428
Nifty		10152

**US:** US Market rose on Tuesday as the Federal Reserve kicked off a two-day monetary policy meeting. Technically DJIA is presently trading at the 5th leg through Elliot wave count with negative divergence in oscillators.



### Increase in OI with Increase in Price (Long Buildup)

Symbol	Prev OI	Curr OI	OI Chg (%)	Curr Pr.	Pr.Chg (%)
KAJARIA					
CER	717600	952800	32.8	740.9	4.1
TATACH					
EM	5067000	6147000	21.3	660.05	2.3
MGL	827400	978000	18.2	1127.25	0.5
BEML	2611800	2996400	14.7	1937	4.1
IGL	1051050	1194050	13.6	1485.2	2.9

### Increase in OI with Decrease in Price (Short Buildup)

Symbol	Prev OI	Curr OI	OI Chg (%)	Curr Pr.	Pr.Chg (%)
INDIGO	2259000	2849400	26.1	1151.1	[1.5]
PEL	999300	1137000	13.8	2788.45	[2.4]
RAMCO					
CEM	431200	481600	11.7	738.7	[1.6]
AJANTP					
HARM	769600	825200	7.2	1200.15	[1.3]
	1099550	1155100			
HDFC	0	0	5.1	1759.1	[1.1]

Nifty declined by 0.05% with Nifty future gained 2.1 lakh shares in open interest and stock future added 428.7 Lakh shares in open interest.

- Nifty PCR remained unchanged at 1.57
- Total Nifty Calls added 3.0 lakh shares in open interest.
- Total Nifty Puts added 5.1 lakh shares in open interest.
- Maximum open interest (Nifty) in Calls for July series is at 10200 and 10000 put.
- FII's sold net Rs.1719.62 Cr(provisional), while DIIs sold net Rs.77.68 Cr in cash market.
- FII sold net Rs.596.30 Cr in F&O
- Securities in Ban Period: BEML, DHFL, HDIL, IBREALEST , INFIBEAM, JPASSOCIAT, JSWENERGY & JUSTDIAL

## Nifty Tracker

PARTICULARS	19/09/2017	18/09/2017	15/09/2017	14/09/2017
Spot	10147.55	10153.1	10085.4	10086.6
% Change in Spot	-0.05%	0.67%	-0.01%	0.07%
Nifty(FUT) Sep	10168.85	10175.3	10101.95	10114.45
Nifty(FUT) Sep Vol.	60582	73440	119934	80249
Nifty(FUT) Sep - OI	20507700	20461950	20946825	20842575
Nifty(FUT) Oct	10201.8	10206.8	10133.1	10144.85
Nifty(FUT) Oct Vol.	4040	4850	4569	3370
Nifty(FUT) Oct - OI	1121025	1004400	896025	836550

## Trade Statistics for 19/09/2017

PARTICULARS	NO. OF CONTRACTS	TURNOVER (RS. CR.)	PUT CALL RATIO
NSE Index Futures	1,06,246	9056	-
NSE Stock Futures	6,42,330	48885	-
NSE Index Options	31,74,826	2,84,015.60	-
NSE Stock Options	4,98,100	38685	0.4
NSE F&O Total Turnover	44,21,502	380,641	0.9
NSE Cash Turnover	-	28,638.18	-
BSE Cash Turnover	-	7,703.72	-
Total Turnover	-	416983	-

## FII Corner (F&O)

FII NET BUYING/SELLING & CHANGE IN OPEN INTEREST (Cr. Rupee)						
PARTICULARS	19/09/2017		18/09/2017		15/09/2017	
	Net Buying /Selling	Change In Open interest	Net Buying /Selling	Change In Open interest	Net Buying /Selling	Change In Open interest
Index Future	-1029	763	-198	550	134	188
Index option	349	1956	-1028	2005	-1032	2493
Stock Future	9	989	84	1013	-1123	1563
Stock option	74	320	3	336	-25	156
Total	-597	4029	-1139	3905	-2046	4400

## Market Open Interest

ADDITION/REDUCTION IN MARKET OPEN INTEREST					
Contracts	19/09/2017	18/09/2017	15/09/2017	14/09/2017	13/09/2017
Index Futures	63	41	52	531	333
Index Options	1201	2165	743	2065	328
Stock Futures	6839	6302	-28463	17047	9006
Stock Options	754	1269	843	1217	1354
F&O Total	8857	9777	-26824.96	20859.85	11020.21

## Nifty Option Open Interest Statistics

NIFTY OPTIONS HIGHEST ADDITION IN OPEN INTEREST						
Expiry	Strike	Option Type	Settlement Price	Volume	Open Interest	Change In OI
29-Mar-18	10100	PE	279	8425	631875	631875
28-Sep-17	10100	PE	37	175353	4343850	262125
28-Sep-17	10150	CE	69.95	25063	942450	257850
28-Sep-17	10250	CE	27.3	27849	1131450	198075
28-Sep-17	10200	CE	46	193083	5589525	189675
28-Sep-17	10050	PE	24.85	34734	1368450	187425
28-Sep-17	10300	CE	15.4	117829	3154275	175425
28-Dec-17	8100	CE	2131	1663	834325	124725
26-Oct-17	9700	PE	24.25	6319	1772625	108825
28-Sep-17	10400	CE	4.55	42946	1883175	100650

NIFTY OPTIONS HIGHEST REDUCTION IN OPEN INTEREST						
Expiry	Strike	Option Type	Settlement Price	Volume	Open Interest	Change In OI
28-Sep-17	8100	CE	2045	3750	83250	-281250
28-Sep-17	10000	CE	184.2	24045	2027625	-260025
28-Sep-17	10000	PE	19.4	131801	5961075	-218550
28-Sep-17	9900	CE	275.6	8122	1146300	-210825
28-Sep-17	8000	CE	2158.7	2097	2241150	-129750
28-Sep-17	9800	PE	6.35	32687	3625575	-127950
28-Sep-17	10200	PE	74.65	97982	2229150	-125400
28-Sep-17	9900	PE	11.05	76010	5236350	-116025
28-Sep-17	9500	PE	2.75	14856	3415425	-114375
28-Sep-17	9400	PE	2.35	7014	1764750	-114300

## Stock Option Open Interest Statistics

STOCK OPTIONS WITH HIGHEST ADDITION IN OPEN INTEREST							
Symbol	Expiry	Strike	Option Type	Settl. Price	Volume	Open Interest	Change in OI
SBIN	28-Sep-17	270	CE	3.7	3087	3714000	1971000
JPASSOCIAT	28-Sep-17	17.5	CE	1.2	159	2176000	1768000
SBIN	28-Sep-17	280	CE	1.15	4618	9606000	1071000
RCOM	28-Sep-17	20	CE	1.2	667	6062000	1050000
TATAMOTORS	28-Sep-17	420	PE	6.15	3500	1170000	1012500
SBIN	28-Sep-17	275	CE	2.1	2254	4863000	969000
GMRINFRA	26-Oct-17	22.5	CE	0.2	20	1035000	855000
SUZLON	26-Oct-17	20	CE	0.35	68	2640000	810000
COALINDIA	28-Sep-17	260	CE	3.65	1378	2204900	770100
ICICIBANK	28-Sep-17	295	CE	4.85	2219	3195500	761750

STOCK OPTIONS WITH HIGHEST REDUCTION IN OPEN INTEREST							
Symbol	Expiry	Strike	Option Type	Settl. Price	Volume	Open Int.	Change in OI
TATAMOTORS	28-Sep-17	410	CE	16.2	4051	645000	-2274000
TATAMOTORS	28-Sep-17	420	CE	9.6	7974	1368000	-2142000
JPASSOCIAT	28-Sep-17	25	CE	0.05	51	8704000	-1972000
JPASSOCIAT	28-Sep-17	20	CE	0.4	102	3400000	-1292000
JPASSOCIAT	28-Sep-17	30	CE	0.05	13	7140000	-748000
IBREALEST	28-Sep-17	200	PE	0.55	157	510000	-730000
RCOM	28-Sep-17	20	PE	0.95	332	3332000	-700000
BHEL	28-Sep-17	140	CE	1.2	2957	6870000	-670000
TATAPOWER	28-Sep-17	87.5	CE	0.95	448	2385000	-639000
JPASSOCIAT	28-Sep-17	22.5	CE	0.2	39	7888000	-612000

## Research Team

Name	Designation	Email ID	Contact No.
Paras Bothra	President Equity Research	paras@ashikagroup.com	+91 22 6611 1704
Sanjeev Jain	AVP Equity Research	sanjeev.j@ashikagroup.com	+91 33 4036 0650
Krishna Kumar Agarwal	Equity Research Analyst	krishna.a@ashikagroup.com	+91 33 4036 0646
Partha Mazumder	Equity Research Analyst	partha.m@ashikagroup.com	+91 33 4036 0647
Arijit Malakar	Equity Research Analyst	amalakar@ashikagroup.com	+91 33 4036 0644
Kapil Jagasia	Equity Research Analyst	kapil.j@ashikagroup.com	+91 22 6611 1715
Tirthankar Das	Technical & Derivative Analyst	tirthankar.d@ashikagroup.com	+91 33 4036 0645

Ashika Stock Broking Limited ("ASBL") or Research Entity has started its journey in the year 1994 and is engaged in the business of broking services, depository services, distributor of financial products (Mutual fund, IPO & Bonds). This research report has been prepared and distributed by ASBL in the sole capacity of a Research Analyst (Reg No. INH00000206) of SEBI (Research Analyst) Regulations 2014. ASBL is a wholly owned subsidiary of Ashika Global Securities (P) Ltd., a RBI registered non-deposit taking NBFC Company. Ashika group (details is enumerated on our website [www.ashikagroup.com](http://www.ashikagroup.com)) is an integrated financial service provider inter alia engaged in the business of Investment Banking, Corporate Lending, Commodity Broking, Debt Syndication & Other Advisory Services.

There were no significant and material disciplinary actions against ASBL taken by any regulatory authority during last three years.

### Disclosure

ASBL or its associates, its Research Analysts (including their relatives) may have financial interest in the subject company(ies). However, the said financial interest is not limited to having an open stock market position in /acting as advisor to /having a loan transaction with the subject company(ies) apart from registration as clients.

- ASBL or its Research Analysts (including their relatives) do not have any actual / beneficial ownership of 1% or more of securities of the subject company(ies) at the end of the month immediately preceding the date of publication of this report or date of the public appearance. However ASBL's associates may have actual / beneficial ownership of 1% or more of securities of the subject company(ies).
- ASBL or their Research Analysts (including their relatives) do not have any other material conflict of interest at the time of publication of this research report or date of the public appearance. However ASBL's associates might have an actual / potential conflict of interest (other than ownership).
- ASBL or its associates may have received compensation for investment banking, merchant banking, and brokerage services and for other products and services from the subject companies during the preceding 12 months. However, ASBL or its associates or its Research analysts (forming part of Research Desk) have not received any compensation or other benefits from the subject companies or third parties in connection with the research report. Moreover, Research Analysts have not received any compensation from the companies mentioned herein in the past twelve months.
- ASBL or their Research Analysts have not managed or co-managed public offering of securities for the subject company(ies) in the past twelve months. However ASBL's associates may have managed or co-managed public offering of securities for the subject company(ies) in the past twelve months.
- Research Analysts have not served as an officer, director or employee of the companies mentioned in the report.
- Neither ASBL nor its Research Analysts have been engaged in market making activity for the companies mentioned in the report.

### Disclaimer

The research recommendation and information herein are solely for the personal information of the authorized recipient and does not construe to be an offer documents or any investment, legal or taxation advice or solicitation of any action based upon it. This report is not for public distribution or use by any person or entity, where such distribution, publication, availability or use would be contrary to law, regulation or subject to any registration or licensing requirement. We will not treat recipients as customer by virtue of their receiving this report. The report is based upon the information obtained from public sources that we consider reliable, but we do not guarantee its accuracy or completeness. ASBL shall not be in anyways responsible for any loss or damage that may arise to any such person from any inadvertent error in the information contained in this report. The recipients of this report should rely on their own investigations.