

Technical Report

Closing Brief

Domestic shares snapped a two-session winning streak to end lower on Monday as software service exporters took a hit on concerns over a stronger rupee, and as investors took a breather after the NSE index hit a record high last week. The broader NSE index ended 33.2 points or 0.36 per cent lower at 9,126.85.

Technical Build up

- ❖ Doji candle with decrease in volume
- ❖ Buy crossover in oscillators.
- ❖ Upper band of Bollinger exist at 9142
- ❖ Crucial moving average of 20/50 SMA are at 8947 and 8702
- ❖ 200 SMA trend deciding level exist at 8499

Outlook for the day

Indian Equity market inched marginally lower as profit taking continues citing weak global cues. BJP's decision to appoint Yogi Adityanath as UP Chief Minister, valuation concerns, the G20 decision to drop a pledge to avoid trade protectionism dampened investor sentiment. On the technical front, failed to hold 9160 partially filled a positive gap of 9106-9128 but was able to close above the previous high of 9119. Overall it has been making higher top – higher bottom formation and supports are shifting higher from 9075 to 9119 on immediate basis. Major trend may remain positive till it holds above psychological 9000 zone. Nifty has supports placed at 9000/9050 levels followed by 8860/8800 on the lower side while on the upside resistance is seen at 9250/9300 followed by 9450 levels. On the option front data witnessed incremental addition in 9100 CE & PE while unwinding was witnessed in OTM Call and Puts indicating Index could consolidate. Indicative band remains at 9000-9200.

Technical & Derivative Report

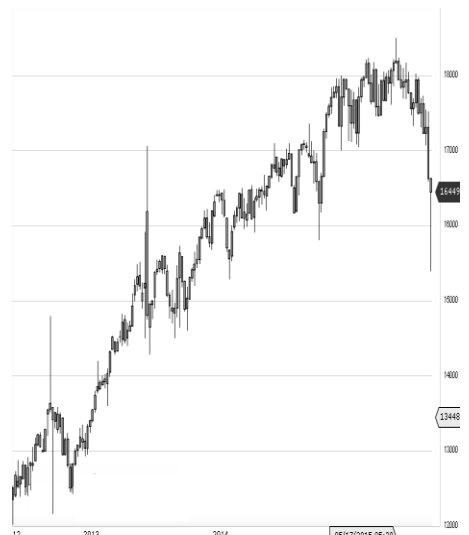
World Indices	LTP	Daily Ch(Pts)	Daily Ch(%)
Dow Jones	20905	-8	-0.04
Nasdaq	5901	-	0.01
S&P 500	2373	-4	-0.20
FTSE 100	7429	4	0.07
DAX	12052	-42	-0.35
Hang Seng	24565	63	0.26
Nikkei	19469	-51	-0.27
Sensex	29518	-130	-0.44
Nifty	9126	-33	-0.36

Commodity /Forex	LTP	Daily Ch(Pts)	Daily Ch(%)
Gold (\$/Oz)	1228.10	-5.90	-0.48
Silver (\$/Oz)	17.36	-0.08	-0.45
Copper(USD/lb.)	264.10	-2.60	-0.97
Brent Crude(USD/bbl)	51.88	0.26	0.50
USD/INR	65.36	-0.11	-0.18
USD/YEN	112.59	0.04	0.04
USD/EUR	1.0764	0.0025	0.23

Support/Resistance levels for Indian Equity Indices					
	S1	S2	CMP	R1	R2
Sensex	29430	29300	29518	29630	29795
Nifty	9100	9060	9126	9160	9210
Nifty (Fut)	9125	9085	9153	9185	9235

Pivot Level		
Sensex		29566
Nifty		9136

US: US market closed mixed on Monday, with utilities lagging, while investors turned their eyes to comments from several Federal Reserve officials. Technically DJIA is presently trading at the 5th leg through Elliot wave count with negative divergence in oscillators.



Increase in OI with Increase in Price (Long Buildup)						Increase in OI with Decrease in Price (Short Buildup)					
Symbol	Prev OI	Curr OI	OI Chg (%)	Curr Pr.	Pr.Chg (%)	Symbol	Prev OI	Curr OI	OI Chg (%)	Curr Pr.	Pr.Chg (%)
PCJEWELLER	596	743	24.7	441	6.1	IDEA	13181	14864	12.8	97.35	[10.1]
AJANTP HARM	1301	1559	19.8	1824	1.7	HCLTEC	10509	11789	12.2	866	[0.1]
GRASIM	8437	9782	15.9	1068	2.2	GLENM	4778	5207	9	883.5	[0.4]
ABIRLA	6493	7339	13	1549	2.1	ARK	23035	24678	7.1	2488.6	[1.6]
NUVO	2678	2995	11.8	553.45	4.1	TCS	3793	4048	6.7	129.2	[1.2]
KSCL						JINDALS					
						TEL					

Nifty declined by 0.36% with Nifty future added 8.1 lakh shares in open interest and stock future added 350.5 Lakh shares in open interest.

- Nifty PCR decreased to 1.10 from 1.13
- Total Nifty Calls added 11.3 lakh shares in open interest.
- Total Nifty Puts shaded 11.7 lakh shares in open interest.
- Maximum open interest (Nifty) in Calls for Jan series is at 9200 and 8800 put.
- FII's bought net Rs.56.67 Cr(provisional), while DIIs sold net Rs.536.21 Cr in cash market.
- FII sold net Rs.382.94 Cr in F&O
- Securities in Ban Period: BHARATFIN, CEATLTD, CENTURYTEX, JETAIRWAYS, JPASSOCIAT, JSWENERGY, KSCL, RELCAPITAL, SINTEX & WOCKPHARMA

Nifty Tracker

PARTICULARS	20/03/2017	17/03/2017	16/03/2017	15/03/2017
Spot	9126.85	9160.05	9153.7	9084.8
% Change in Spot	-0.36%	0.07%	0.76%	-0.02%
Nifty(FUT) Mar	9153.55	9171.75	9176.15	9109.3
Nifty(FUT) Mar Vol.	73494	111152	99303	73550
Nifty(FUT) Mar - OI	25570875	24889275	26046375	25283175
Nifty(FUT) Apr	9184.3	9200.05	9201.55	9138.35
Nifty(FUT) Apr Vol.	5593	6846	6016	6066
Nifty(FUT) Apr - OI	4625175	4497600	4244850	4029675

Trade Statistics for 20/03/2017

PARTICULARS	NO. OF CONTRACTS	TURNOVER (RS. CR.)	PUT CALL RATIO
NSE Index Futures	1,15,241	8458	-
NSE Stock Futures	5,56,747	40382	-
NSE Index Options	24,07,262	1,83,579.21	-
NSE Stock Options	3,74,071	27678	0.49
NSE F&O Total Turnover	34,53,321	260,098	0.88
NSE Cash Turnover	-	22,573.05	-
BSE Cash Turnover	-	56820.64	-
Total Turnover	-	339491	-

FII Corner (F&O)

FII NET BUYING/SELLING & CHANGE IN OPEN INTEREST (Cr. Rupee)						
PARTICULARS	20/03/2017		17/03/2017		16/03/2017	
	Net Buying /Selling	Change In Open interest	Net Buying /Selling	Change In Open interest	Net Buying /Selling	Change In Open interest
Index Future	777	-75	-137	-122	858	1225
Index option	89	-525	834	1728	1484	1096
Stock Future	-1280	162	-425	147	-166	1490
Stock option	31	159	8	517	-178	308
Total	-383	-278	280	2269	1998	4119

Market Open Interest

ADDITION/REDUCTION IN MARKET OPEN INTEREST					
Contracts	20/03/2017	17/03/2017	16/03/2017	15/03/2017	14/03/2017
Index Futures	720	-1001	1061	280	2931
Index Options	1389	-232	2013	1205	2684
Stock Futures	4056	-21824	17171	5330	2281
Stock Options	1705	2078	785	213	672
F&O Total	7870	-20979	21029.67	7028.2	8567.2

Nifty Option Open Interest Statistics

NIFTY OPTIONS HIGHEST ADDITION IN OPEN INTEREST						
Expiry	Strike	Option Type	Settlement Price	Volume	Open Interest	Change In OI
30-Mar-17	9100	CE	93.5	99770	3696600	587700
30-Mar-17	9200	CE	41.25	162198	6037050	273825
30-Mar-17	9250	CE	24.7	14206	813600	191400
30-Mar-17	9150	CE	64.2	18923	459375	150075
30-Mar-17	9450	CE	2.2	5196	274200	135450
27-Apr-17	9300	CE	79.65	6700	831900	133350
30-Mar-17	9000	PE	19.1	97478	5523525	115125
27-Apr-17	8500	CE	680	1438	604725	89475
27-Apr-17	8600	PE	12.6	3651	933750	85200
30-Mar-17	9350	CE	7.15	7245	513300	81150

NIFTY OPTIONS HIGHEST REDUCTION IN OPEN INTEREST						
Expiry	Strike	Option Type	Settlement Price	Volume	Open Interest	Change In OI
30-Mar-17	9200	PE	86.55	77021	1612425	-509775
30-Mar-17	8800	PE	4.2	81892	5623350	-411225
30-Mar-17	8400	PE	1.05	13526	2345475	-319575
30-Mar-17	9000	CE	169.8	14703	2420250	-141825
30-Mar-17	8500	PE	1.4	17053	2814525	-135675
30-Mar-17	9500	CE	1.5	34574	3301050	-116400
30-Mar-17	8900	PE	8.35	86734	5551200	-116175
30-Mar-17	8700	PE	2.3	34191	3419550	-115200
30-Mar-17	9300	CE	13.9	106900	4300425	-93900
30-Mar-17	10000	CE	0.4	5070	921075	-75075

Stock Option Open Interest Statistics

STOCK OPTIONS WITH HIGHEST ADDITION IN OPEN INTEREST							
Symbol	Expiry	Strike	Option Type	Settl. Price	Volume	Open Interest	Change in OI
IDEA	30-Mar-17	115	CE	1.05	7463	12047000	6818000
IDEA	30-Mar-17	120	CE	0.7	9888	18221000	6237000
IDEA	30-Mar-17	100	CE	4.15	4788	6020000	5747000
IDEA	30-Mar-17	130	CE	0.25	4490	12866000	5096000
IDEA	30-Mar-17	110	CE	1.6	7330	9793000	4599000
IDEA	30-Mar-17	105	CE	2.55	3831	5397000	4347000
IDEA	30-Mar-17	80	PE	0.8	2634	4452000	3752000
IDEA	30-Mar-17	90	PE	2.35	5405	5019000	3108000
IDEA	30-Mar-17	102.5	CE	3.25	916	1750000	1652000
IDEA	30-Mar-17	85	PE	1.35	1719	1974000	1610000

STOCK OPTIONS WITH HIGHEST REDUCTION IN OPEN INTEREST							
Symbol	Expiry	Strike	Option Type	Settl. Price	Volume	Open Int.	Change in OI
IDEA	30-Mar-17	100	PE	6.35	6258	4781000	-1589000
JPASSOCIAT	30-Mar-17	17.5	CE	0.05	39	22440000	-1292000
JPASSOCIAT	30-Mar-17	12.5	PE	0.3	42	6256000	-1156000
JPASSOCIAT	30-Mar-17	15	PE	2.05	22	7276000	-1088000
ICICIBANK	30-Mar-17	300	CE	0.6	1761	8102500	-892500
ADANIPOWER	30-Mar-17	40	CE	1.5	361	7320000	-800000
JPASSOCIAT	30-Mar-17	15	CE	0.15	50	16252000	-680000
SINTEX	30-Mar-17	105	CE	1.1	117	2750250	-513000
ADANIPOWER	30-Mar-17	45	CE	0.25	337	4980000	-500000
NHPC	30-Mar-17	32.5	CE	0.15	34	8451000	-459000

Research Team

Name	Designation	Email ID	Contact No.
Paras Bothra	President Equity Research	paras@ashikagroup.com	+91 22 6611 1704
Krishna Kumar Agarwal	Equity Research Analyst	krishna.a@ashikagroup.com	+91 33 4036 0646
Partha Mazumder	Equity Research Analyst	partha.m@ashikagroup.com	+91 33 4036 0647
Arijit Malakar	Equity Research Analyst	amalakar@ashikagroup.com	+91 33 4036 0644
Kapil Jagasia, CFA	Equity Research Analyst	kapil.j@ashikagroup.com	+91 22 6611 1715
Tirthankar Das	Technical & Derivative Analyst	tirthankar.d@ashikagroup.com	+91 33 4036 0645

SEBI Registration No. INH000000206

Disclosure

The Research Analysts and /or Ashika Stock Broking Limited do hereby certify that all the views expressed in this research report accurately reflect their views about the subject issuer(s) or securities. Moreover, they also certify the followings:-

- The Research Analyst or Ashika Stock Broking Limited or his/its Associates or his/its relative, has any financial interest in the subject company (ies) covered in this report. **Yes**
- The Research Analyst or Ashika Stock Broking Limited or his/its Associates or his/its relative, have actual/beneficial ownership of 1% or more in the subject company, at the end of the month immediately preceding the date of the publication of the research report. **No**
- The Research Analyst or Ashika Stock Broking Limited or his/its Associates or his/its relatives has any material conflict of interest at the time of publication of the research report. **No**
- The Research Analyst or Ashika Stock Broking Limited or his/its Associates have received compensation for investment banking or merchant banking or brokerage services or for product other than for investment banking or merchant banking or brokerage services from the companies covered in this report in the past 12 months. **No**
- The Research Analyst or Ashika Stock Broking Limited or his/its Associates have managed or co managed in the previous 12 months any private or public offering of securities for the company (ies) covered in this report. **No**
- The Research Analyst or Ashika Stock Broking Limited or his/its Associates have received any compensation or other benefits from the company (ies) covered in this report or any third party in connection with the Research Report. **No**
- The Research Analyst has served as an officer, director or employee of the company (ies) covered in the research report. **No**
- The Research Analyst or Ashika Stock Broking Limited has been engaged in Market making activity of the company (ies) covered in the research report. **No**

Disclaimer

This report is for the personal information of the authorized recipient and does not construe to be any investment, legal or taxation advice to you. Ashika Stock Broking Ltd. is not soliciting any action based upon it. This report is not for public distribution and has been furnished to you solely for your information and should not be reproduced or redistributed to any other person in any form. The report is based upon information that we consider reliable, but we do not represent that it is accurate or complete, and it should not be relied upon such. Ashika Stock Broking Ltd. or any of its affiliates or employees shall not be in anyway responsible for any loss or damage that may arise to any person from any inadvertent error in the information contained in this report. Ashika Stock Broking Ltd., or any of its affiliates or employees do not provide, at any time, any express or implied warranty of any kind, regarding any matter pertaining to this report, including without limitation the implied warranties of merchantability, fitness for a particular purpose, and non-infringement. The recipients of this report should rely on their own investigations.