

# Technical Report

## Closing Brief

Markets closed in green for the 4th consecutive session amid choppy trading with the support of rally in pharma stocks. Nifty closed at 10326.90 up by 28.15 points or 0.27%. India VIX closed at 13.72 levels up by 0.28 points or 2.10%

## Technical Build up

- ❖ Bullish Doji candle with decrease in volume
- ❖ Buy crossover in oscillators.
- ❖ Lower band of Bollinger exist at 10135
- ❖ Crucial moving average of 20/50 SMA are at 10312 and 10140
- ❖ 200 SMA trend deciding level exist at 9608

## Outlook for the day

Indian Equity market started the session on a firm note, but witnessed resistance at higher levels. Banking and select NBFC stocks witnessed profit booking. Pharma, Oil & Gas, and Tyre stocks witnessed spurt in price action. On the technical front, Nifty formed Doji candle an indecisive pattern which does not augur well for the bulls. A clear breakout or a breakdown will decide the direction of markets in the near term. All the crucial averages synchronizing around a single point indicating of a spurt in price action in days to come. The rising trendline support from 30th December now hangs around the psychological level of 10000. Going ahead it seems that Nifty can move towards 10400-10500 levels while multiple strong supports exist at lower levels of 10100 & 10200-10250. During the day immediate support is placed around 10300 and the next support is placed around 10230 levels. On the higher side, the immediate resistance is placed around 10360 levels and the next resistance is placed around 10400 levels. On the option front maximum Put OI is at 10300 and 10200 strike while maximum Call OI is at 10500 followed by 10400 strikes

## Technical & Derivative Report

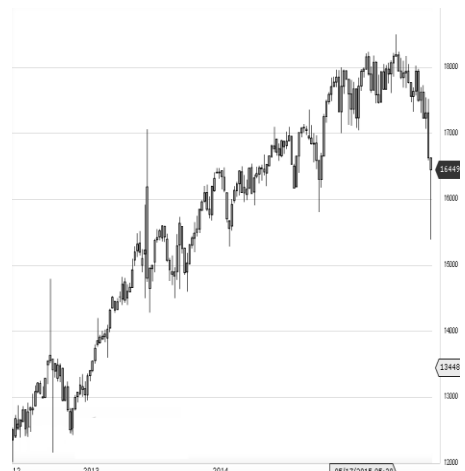
World Indices	LTP	Daily Ch(Pts)	Daily Ch(%)
Dow Jones	23590	160	0.69
Nasdaq	6862	71	1.06
S&P 500	2599	16	0.65
FTSE 100	7411	21	0.30
DAX	13167	108	0.83
Hang Seng	30017	199	0.67
Nikkei	22576	160	0.72
Sensex	33478	118	0.36
Nifty	10326	28	0.27

Commodity / Forex	LTP	Daily 1.1Ch(Pts)	Daily Ch(%)
Gold (\$/Oz)	1280.60	-1.10	-0.09
Silver (\$/Oz)	16.94	-0.02	-0.12
Copper(USD/lb.)	315.10	0.05	0.02
Brent Crude(USD/bbl)	63.08	0.51	0.82
USD/INR	64.89	-0.20	-0.31
USD/YEN	112.28	-0.17	-0.15
USD/EUR	1.1737	-0.0001	-0.01

Support/Resistance levels for Indian Equity Indices					
	S1	S2	CMP	R1	R2
Sensex	33390	33160	33478	33590	33725
Nifty	10300	10230	10326	10360	10400
Nifty (Fut)	10325	10255	10351	10385	10425

Pivot Level	
Sensex	33513
Nifty	10333

**US:** US Market rose to record highs on Tuesday as a rally in tech lifted the broader market. Investors also cheered strong quarterly results from top companies in Corporate America. Technically DJIA is presently trading at the 5th leg through Elliot wave count with negative divergence in oscillators.



Increase in OI with Increase in Price (Long Buildup)						Increase in OI with Decrease in Price (Short Buildup)					
Symbol	Prev OI	Curr OI	OI Chg (%)	Curr Pr.	Pr.Chg (%)	Symbol	Prev OI	Curr OI	OI Chg (%)	Curr Pr.	Pr.Chg (%)
KAJARI	11552	18656				L&TFH	32868	47893			
ACER	00	00	61.5	721.95	0.9	POWER	000	500	45.7	179.45	[4.8]
HEXAW	27270	32790				GRID	23884	27324			
ARE	00	00	20.2	336.8	1.7		20928	23210	14.4	206.95	[0.9]
	29780	34688				BEL	600	550	10.9	177.5	[1.4]
NTPC	000	000	16.5	182.65	1.3	MOTHE	11756	12671			
CEATLT	18189	20881				RSUMI	250	250	7.8	354.35	[1.3]
D	50	00	14.8	1848.45	3.9	CASTR	12873	13799			
	64890	73980				OLIND	000	800	7.2	391.55	[0.7]
TITAN	00	00	14	817.9	4.2						

# Derivative Report

## Technical & Derivative Report

Nifty gained by 0.27% with Nifty future shaded 6.0 lakh shares in open interest and stock future shaded 619.8 Lakh shares in open interest.

- Nifty PCR increased to 1.30 from 1.22
- Total Nifty Calls shaded 20.7 lakh shares in open interest.
- Total Nifty Puts added 26.7 lakh shares in open interest.
- Maximum open interest (Nifty) in Calls for Oct series is at 10500 and 10300 put.
- FII's sold net Rs.727.01 Cr(provisional), while DIIs bought net Rs.825.5 Cr in cash market.
- FII sold net Rs.810.25 Cr in F&O
- Securities in Ban Period: DHFL, DLF, HDIL, ICIL, INFIBEAM, JISJALEQS, JPASSOCIAT, JSWENERGY, JUSTDIAL, KSCL, RCOM, RELCAPITAL, TV18BRDCST & WOCKPHARMA

### Nifty Tracker

PARTICULARS	21/11/2017	20/11/2017	17/11/2017	16/11/2017
Spot	10326.9	10298.75	10283.6	10214.75
% Change in Spot	0.27%	0.15%	0.67%	0.96%
Nifty(FUT) Nov	10351.9	10320.05	10308.85	10250.9
Nifty(FUT) Nov Vol.	87712	65964	121489	117205
Nifty(FUT) Nov - OI	22165500	23123250	23056500	23291850
Nifty(FUT) Dec	10387.15	10355.2	10345.85	10286.5
Nifty(FUT) Dec Vol.	10373	7573	8787	12553
Nifty(FUT) Dec - OI	3016500	2670300	2464500	2380800

### Trade Statistics for 21/11/2017

PARTICULARS	NO. OF CONTRACTS	TURNOVER (RS. CR.)	PUT CALL RATIO
NSE Index Futures	1,52,310	13217	-
NSE Stock Futures	7,27,002	52199	-
NSE Index Options	42,54,996	3,91,568.53	-
NSE Stock Options	5,11,341	38606	0.39
NSE F&O Total Turnover	56,45,649	495,591	0.94
NSE Cash Turnover	-	33,644.09	-
BSE Cash Turnover	-	4,825.73	-
Total Turnover	-	534061	-

### FII Corner (F&O)

FII NET BUYING/SELLING & CHANGE IN OPEN INTEREST (Cr. Rupee)						
PARTICULARS	21/11/2017		20/11/2017		17/11/2017	
	Net Buying /Selling	Change In Open interest	Net Buying /Selling	Change In Open interest	Net Buying /Selling	Change In Open interest
Index Future	878	-415	211	206	518	1439
Index option	-266	5063	-892	805	1193	2579
Stock Future	-1434	1399	-613	291	-805	409
Stock option	12	170	50	99	97	290
Total	-810	6217	-1244	1401	1003	4718

### Market Open Interest

ADDITION/REDUCTION IN MARKET OPEN INTEREST					
Contracts	21/11/2017	20/11/2017	17/11/2017	16/11/2017	15/11/2017
Index Futures	-503	413	492	-315	-888
Index Options	1523	1444	825	2311	-2112
Stock Futures	7421	8793	-27558	15150	6919
Stock Options	390	897	20112	301	50
F&O Total	8832	11547	-6128.91	17446.64	3968.48

## Nifty Option Open Interest Statistics

NIFTY OPTIONS HIGHEST ADDITION IN OPEN INTEREST						
Expiry	Strike	Option Type	Settlement Price	Volume	Open Interest	Change In OI
28-Dec-17	9800	PE	31.25	32889	2392350	1815075
30-Nov-17	10300	PE	49.4	223582	5393850	752325
30-Nov-17	10350	PE	69.15	30850	1075800	370500
30-Nov-17	10100	PE	12.65	94325	2983050	219075
30-Nov-17	10400	PE	95.5	95970	1630875	174675
30-Nov-17	9700	PE	2.1	14988	1642800	156525
30-Nov-17	9900	PE	3.65	29282	2333625	151275
30-Nov-17	10450	CE	34.5	19578	673500	92625
25-Jun-20	11600	PE	869	1227	104850	92025
28-Dec-17	10400	PE	159.55	6302	1136500	91200

NIFTY OPTIONS HIGHEST REDUCTION IN OPEN INTEREST						
Expiry	Strike	Option Type	Settlement Price	Volume	Open Interest	Change In OI
30-Nov-17	10300	CE	101	135670	3343125	-687900
30-Nov-17	10200	CE	175.95	29660	1470000	-453525
30-Nov-17	10200	PE	25	160861	4903875	-392775
30-Nov-17	10700	CE	3.55	55095	2794875	-267675
30-Nov-17	9600	PE	1.8	10524	1327575	-257325
30-Nov-17	10600	CE	8.65	90087	3996975	-253875
30-Nov-17	10500	CE	22.6	170534	6163500	-240900
30-Nov-17	10150	PE	17.7	19867	425700	-208275
30-Nov-17	9500	PE	1.65	9257	1174650	-155700
30-Nov-17	9800	PE	2.65	21631	1540800	-135825

## Stock Option Open Interest Statistics

STOCK OPTIONS WITH HIGHEST ADDITION IN OPEN INTEREST							
Symbol	Expiry	Strike	Option Type	Settl. Price	Volume	Open Interest	Change in OI
NHPC	30-Nov-17	30	CE	0.2	231	14418000	2457000
SAIL	30-Nov-17	87.5	CE	1.65	574	3276000	1608000
SAIL	30-Nov-17	100	CE	0.4	557	4032000	1344000
SUZLON	30-Nov-17	15	CE	0.2	549	24690000	1320000
L&TFH	30-Nov-17	185	CE	2.05	965	1521000	1300500
JISLJALEQS	30-Nov-17	120	CE	1.85	1258	3231000	1251000
SAIL	30-Nov-17	90	CE	1.15	2060	8736000	1176000
L&TFH	30-Nov-17	190	CE	1.3	1301	2434500	1156500
L&TFH	30-Nov-17	180	CE	3.6	692	1336500	1147500
SUZLON	28-Dec-17	17.5	CE	0.25	52	3240000	1080000

STOCK OPTIONS WITH HIGHEST REDUCTION IN OPEN INTEREST							
Symbol	Expiry	Strike	Option Type	Settl. Price	Volume	Open Int.	Change in OI
RCOM	30-Nov-17	12.5	CE	1.5	223	3360000	-1554000
RCOM	30-Nov-17	15	CE	0.5	332	3696000	-1526000
JISLJALEQS	30-Nov-17	110	CE	6.45	659	1539000	-1287000
SUZLON	30-Nov-17	17.5	CE	0.05	96	37170000	-930000
TATAPOWER	30-Nov-17	90	CE	4.1	436	3024000	-828000
TATAPOWER	30-Nov-17	92.5	CE	2.75	323	756000	-792000
SAIL	30-Nov-17	80	CE	4.75	618	4836000	-624000
TV18BRDCST	30-Nov-17	47.5	CE	0.8	54	4012000	-612000
TATAGLOBAL	30-Nov-17	240	CE	33.85	205	616500	-603000
RCOM	30-Nov-17	10	CE	3.65	52	3052000	-588000

## Research Team

Name	Designation	Email ID	Contact No.
Paras Bothra	President Equity Research	paras@ashikagroup.com	+91 22 6611 1704
Krishna Kumar Agarwal	Equity Research Analyst	krishna.a@ashikagroup.com	+91 33 4036 0646
Partha Mazumder	Equity Research Analyst	partha.m@ashikagroup.com	+91 33 4036 0647
Arijit Malakar	Equity Research Analyst	amalakar@ashikagroup.com	+91 33 4036 0644
Kapil Jagasia	Equity Research Analyst	kapil.j@ashikagroup.com	+91 22 6611 1715
Tirthankar Das	Technical & Derivative Analyst	tirthankar.d@ashikagroup.com	+91 33 4036 0645

Ashika Stock Broking Limited ("ASBL") or Research Entity has started its journey in the year 1994 and is engaged in the business of broking services, depository services, distributor of financial products (Mutual fund, IPO & Bonds). This research report has been prepared and distributed by ASBL in the sole capacity of a Research Analyst (Reg No. INH00000206) of SEBI (Research Analyst) Regulations 2014. ASBL is a wholly owned subsidiary of Ashika Global Securities (P) Ltd., a RBI registered non-deposit taking NBFC Company. Ashika group (details is enumerated on our website [www.ashikagroup.com](http://www.ashikagroup.com)) is an integrated financial service provider inter alia engaged in the business of Investment Banking, Corporate Lending, Commodity Broking, Debt Syndication & Other Advisory Services.

There were no significant and material disciplinary actions against ASBL taken by any regulatory authority during last three years.

### Disclosure

ASBL or its associates, its Research Analysts (including their relatives) may have financial interest in the subject company(ies). However, the said financial interest is not limited to having an open stock market position in /acting as advisor to /having a loan transaction with the subject company(ies) apart from registration as clients.

- 1) ASBL or its Research Analysts (including their relatives) do not have any actual / beneficial ownership of 1% or more of securities of the subject company(ies) at the end of the month immediately preceding the date of publication of this report or date of the public appearance. However ASBL's associates may have actual / beneficial ownership of 1% or more of securities of the subject company(ies).
- 2) ASBL or their Research Analysts (including their relatives) do not have any other material conflict of interest at the time of publication of this research report or date of the public appearance. However ASBL's associates might have an actual / potential conflict of interest (other than ownership).
- 3) ASBL or its associates may have received compensation for investment banking, merchant banking, and brokerage services and for other products and services from the subject companies during the preceding 12 months. However, ASBL or its associates or its Research analysts (forming part of Research Desk) have not received any compensation or other benefits from the subject companies or third parties in connection with the research report. Moreover, Research Analysts have not received any compensation from the companies mentioned herein in the past twelve months.
- 4) ASBL or their Research Analysts have not managed or co-managed public offering of securities for the subject company(ies) in the past twelve months. However ASBL's associates may have managed or co-managed public offering of securities for the subject company(ies) in the past twelve months.
- 5) Research Analysts have not served as an officer, director or employee of the companies mentioned in the report.
- 6) Neither ASBL nor its Research Analysts have been engaged in market making activity for the companies mentioned in the report.

### Disclaimer

The research recommendation and information herein are solely for the personal information of the authorized recipient and does not construe to be an offer documents or any investment, legal or taxation advice or solicitation of any action based upon it. This report is not for public distribution or use by any person or entity, where such distribution, publication, availability or use would be contrary to law, regulation or subject to any registration or licensing requirement. We will not treat recipients as customer by virtue of their receiving this report. The report is based upon the information obtained from public sources that we consider reliable, but we do not guarantee its accuracy or completeness. ASBL shall not be in anyways responsible for any loss or damage that may arise to any such person from any inadvertent error in the information contained in this report. The recipients of this report should rely on their own investigations.