

Technical Report

Closing Brief

Markets closed in green for the 4th consecutive session amid choppy trading with the support of rally in pharma stocks. Nifty closed at 10326.90 up by 28.15 points or 0.27%. India VIX closed at 13.72 levels up by 0.28 points or 2.10%

Technical Build up

- ❖ Bullish Doji candle with decrease in volume
- ❖ Buy crossover in oscillators.
- ❖ Lower band of Bollinger exist at 10150
- ❖ Crucial moving average of 20/50 SMA are at 10320 and 10154
- ❖ 200 SMA trend deciding level exist at 9625

Outlook for the day

Indian Equity market ended higher for fifth straight session, gains were capped by battered metal and healthcare stocks. Sentiment was bolstered by positive global cues. On sectoral front MEDIA, PSU BANK, FMCG, REALTY, AUTO and FIN SERVICE outperformed the Nifty while BANK, IT, PVT BANK, METAL and PHARMA underperformed. On the technical front, Nifty formed another Doji candle, an indecisive pattern which does not augur well for the bulls. A clear breakout or a breakdown will decide the direction of markets in the near term. All the crucial averages synchronizing around a single point indicating of a spurt in price action in days to come. The rising trendline support from 30th December now hangs around the psychological level of 10000. Going ahead it seems that Nifty can move towards 10400-10500 levels while multiple strong supports exist at lower levels of 10100 & 10200-10250. During the day immediate support around 10300 levels and next support is at 10260 levels. Immediate resistance is around 10370 and next resistance is around 10460 levels. On the option front maximum Put OI is at 10300 and 10200 strike while maximum Call OI is at 10500 followed by 10400 strikes.

Technical & Derivative Report

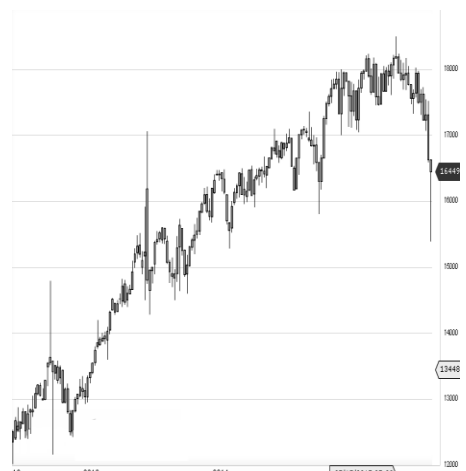
World Indices	LTP	Daily Ch(Pts)	Daily Ch(%)
Dow Jones	23526	-64	-0.27
Nasdaq	6867	4	0.07
S&P 500	2597	-1	-0.08
FTSE 100	7419	7	0.10
DAX	13015	-152	-1.16
Hang Seng	30020	16	0.06
Nikkei	22523	106	0.48
Sensex	33561	83	0.25
Nifty	10342	15	0.15

Commodity / Forex	LTP	Daily 1.1Ch(Pts)	Daily Ch(%)
Gold (\$/Oz)	1290.20	-2.00	-0.15
Silver (\$/Oz)	17.17	-0.05	-0.27
Copper(USD/lb.)	315.60	-0.30	-0.09
Brent Crude(USD/bbl)	63.19	-0.13	-0.21
USD/INR	64.92	0.03	0.05
USD/YEN	111.17	-0.05	-0.04
USD/EUR	1.1824	0.0002	0.02

Support/Resistance levels for Indian Equity Indices					
	S1	S2	COMP	R1	R2
Sensex	33420	33290	33561	33655	33950
Nifty	10300	10260	10342	10370	10460
Nifty (Fut)	10315	10275	10357	10385	10475

Pivot Level		
Sensex		33560
Nifty		10340

US: US Market finished lower after Federal Reserve expresses concern about the impact of the market's sharp rise on the economy in a summary of its previous meeting. Technically DJIA is presently trading at the 5th leg through Elliot wave count with negative divergence in oscillators.



Increase in OI with Increase in Price (Long Buildup)						Increase in OI with Decrease in Price (Short Buildup)							
Symbol	Prev OI	Curr OI	OI Chg (%)	Curr Pr.	Pr.Chg (%)	Symbol	Prev OI	Curr OI	OI Chg (%)	Curr Pr.	Pr.Chg (%)		
ZEEL	60593	74048	00	22.2	563	4	BATAIN	23584	30030	00	27.3	748.3 [2.7]	
SUNTV	55840	66600	00	19.3	879.8	3.2	DIA	00	00	00	00	00	
JETAIR	56748	66516	00	17.2	670.05	1.1	MOTHE	12311	13965	00	13.4	346.05 [2.3]	
WAYS	00	00	00	17.2	670.05	1.1	RBLBA	58140	62760	00	00	8	507.65 [1.2]
CANBK	99335	11099	64	11.7	400.4	1.6	NK	00	00	00	00	00	
BEL	21359	23665	250	10.8	182.15	2.5	SIEMEN	10240	11045	00	7.9	1194.9	
							S	00	00	00	00	5	0.6
							NESTLE	15060	16130	00	00	00	00
							IND	0	0	0	7.1	7631.1 [1.7]	

Derivative Report

Technical & Derivative Report

Nifty gained by 0.15% with Nifty future added 0.1 lakh shares in open interest and stock future added 281.4 Lakh shares in open interest.

- Nifty PCR increased to 1.32 from 1.30
- Total Nifty Calls added 1.7 lakh shares in open interest.
- Total Nifty Puts added 17.8 lakh shares in open interest.
- Maximum open interest (Nifty) in Calls for Oct series is at 10500 and 10300 put.
- FII's sold net Rs.441.46 Cr(provisional), while DIIs bought net Rs.837.22 Cr in cash market.
- FII sold net Rs.190.21 Cr in F&O
- Securities in Ban Period: DHFL, DLF, HDIL, ICIL, INFIBEAM, JISJALEQS, JPASSOCIAT, JSWENERGY, JUSTDIAL, RCOM, RELCAPITAL, TV18BRDCST & WOCKPHARMA

Nifty Tracker

PARTICULARS	22/11/2017	21/11/2017	20/11/2017	17/11/2017
Spot	10342.3	10326.9	10298.75	10283.6
% Change in Spot	0.15%	0.27%	0.15%	0.67%
Nifty(FUT) Nov	10357.95	10351.9	10320.05	10308.85
Nifty(FUT) Nov Vol.	84060	87712	65964	121489
Nifty(FUT) Nov - OI	21734175	22165500	23123250	23056500
Nifty(FUT) Dec	10393.9	10387.15	10355.2	10345.85
Nifty(FUT) Dec Vol.	11257	10373	7573	8787
Nifty(FUT) Dec - OI	3452925	3016500	2670300	2464500

Trade Statistics for 22/11/2017

PARTICULARS	NO. OF CONTRACTS	TURNOVER (RS. CR.)	PUT CALL RATIO
NSE Index Futures	1,50,922	13131	-
NSE Stock Futures	6,63,045	48161	-
NSE Index Options	59,84,290	5,66,001.46	-
NSE Stock Options	4,83,675	37363	0.39
NSE F&O Total Turnover	72,81,932	664,657	0.85
NSE Cash Turnover	-	29,866.40	-
BSE Cash Turnover	-	4,333.06	-
Total Turnover	-	698856	-

FII Corner (F&O)

FII NET BUYING/SELLING & CHANGE IN OPEN INTEREST (Cr. Rupee)						
PARTICULARS	22/11/2017		21/11/2017		20/11/2017	
	Net Buying /Selling	Change In Open interest	Net Buying /Selling	Change In Open interest	Net Buying /Selling	Change In Open interest
Index Future	142	9	878	-415	211	206
Index option	-102	1706	-266	5063	-892	805
Stock Future	-231	-10	-1434	1399	-613	291
Stock option	1	102	12	170	50	99
Total	-190	1807	-810	6217	-1244	1401

Market Open Interest

ADDITION/REDUCTION IN MARKET OPEN INTEREST					
Contracts	22/11/2017	21/11/2017	20/11/2017	17/11/2017	16/11/2017
Index Futures	-90	-503	413	492	-315
Index Options	457	1523	1444	825	2311
Stock Futures	7611	7421	8793	-27558	15150
Stock Options	467	390	897	20112	301
F&O Total	8445	8832	11547.07	-6128.91	17446.64

Nifty Option Open Interest Statistics

NIFTY OPTIONS HIGHEST ADDITION IN OPEN INTEREST						
Expiry	Strike	Option Type	Settlement Price	Volume	Open Interest	Change In OI
28-Dec-17	9800	PE	32.7	15037	2974425	582075
30-Nov-17	10450	CE	30.45	39148	1113300	439800
25-Jun-20	12000	PE	1061	3774	288075	283050
30-Nov-17	10100	PE	10.6	90141	3238200	255150
30-Nov-17	10400	CE	48	301863	5237325	237225
30-Nov-17	10400	PE	87.55	119766	1826175	195300
28-Dec-17	10400	PE	158.15	8145	1316950	180450
28-Dec-17	10300	PE	118.45	11879	1496175	147675
30-Nov-17	10600	CE	7.2	90514	4133625	136650
25-Jun-20	11600	PE	917	3134	235050	130200

NIFTY OPTIONS HIGHEST REDUCTION IN OPEN INTEREST						
Expiry	Strike	Option Type	Settlement Price	Volume	Open Interest	Change In OI
30-Nov-17	10300	CE	100.7	151122	2994000	-349125
30-Nov-17	10200	PE	21.5	186888	4676400	-227475
30-Nov-17	10200	CE	177.9	21796	1299375	-170625
30-Nov-17	10800	CE	1.4	18296	2258025	-146250
30-Nov-17	11000	CE	0.9	7731	1503750	-94650
30-Nov-17	10700	CE	2.7	45485	2705850	-89025
30-Nov-17	10150	PE	15.1	18803	336750	-88950
30-Nov-17	10000	PE	5.6	56480	4947000	-81525
30-Nov-17	10250	PE	29.7	46370	1024725	-81000
28-Dec-17	9500	PE	17	5076	2433325	-56475

Stock Option Open Interest Statistics

STOCK OPTIONS WITH HIGHEST ADDITION IN OPEN INTEREST							
Symbol	Expiry	Strike	Option Type	Settl. Price	Volume	Open Interest	Change in OI
ASHOKLEY	30-Nov-17	115	CE	1.9	1112	3528000	1050000
IFCI	30-Nov-17	27.5	CE	0.3	612	10318000	1012000
NCC	30-Nov-17	115	CE	1.55	701	2000000	1000000
IBREALEST	30-Nov-17	220	CE	6.8	968	1750000	907500
GMRINFRA	30-Nov-17	20	CE	0.05	57	31590000	855000
SUZLON	28-Dec-17	17.5	CE	0.25	39	3990000	750000
NCC	30-Nov-17	120	CE	0.85	505	1920000	672000
SAIL	30-Nov-17	87.5	CE	1.05	227	3924000	648000
IFCI	30-Nov-17	25	CE	0.8	1015	10824000	616000
TATAGLOBAL	28-Dec-17	250	CE	34	128	1377000	576000

STOCK OPTIONS WITH HIGHEST REDUCTION IN OPEN INTEREST							
Symbol	Expiry	Strike	Option Type	Settl. Price	Volume	Open Int.	Change in OI
JPASSOCIAT	30-Nov-17	20	CE	0.5	339	14858000	-1870000
SUZLON	30-Nov-17	17.5	CE	0.05	84	35760000	-1410000
JPASSOCIAT	30-Nov-17	17.5	PE	0.3	123	5372000	-1360000
SBIN	30-Nov-17	320	CE	18	765	2379000	-906000
HDIL	30-Nov-17	60	CE	3	87	1144000	-592000
JPASSOCIAT	30-Nov-17	17.5	CE	2.25	59	3026000	-578000
JISLJALEQS	30-Nov-17	120	CE	1.3	149	2655000	-576000
SUZLON	30-Nov-17	15	CE	0.15	204	24150000	-540000
TV18BRDCST	30-Nov-17	50	CE	0.3	99	5423000	-527000
RCOM	30-Nov-17	12.5	CE	1.7	71	2842000	-518000

Research Team

Name	Designation	Email ID	Contact No.
Paras Bothra	President Equity Research	paras@ashikagroup.com	+91 22 6611 1704
Krishna Kumar Agarwal	Equity Research Analyst	krishna.a@ashikagroup.com	+91 33 4036 0646
Partha Mazumder	Equity Research Analyst	partha.m@ashikagroup.com	+91 33 4036 0647
Arijit Malakar	Equity Research Analyst	amalakar@ashikagroup.com	+91 33 4036 0644
Kapil Jagasia	Equity Research Analyst	kapil.j@ashikagroup.com	+91 22 6611 1715
Tirthankar Das	Technical & Derivative Analyst	tirthankar.d@ashikagroup.com	+91 33 4036 0645

Ashika Stock Broking Limited ("ASBL") or Research Entity has started its journey in the year 1994 and is engaged in the business of broking services, depository services, distributor of financial products (Mutual fund, IPO & Bonds). This research report has been prepared and distributed by ASBL in the sole capacity of a Research Analyst (Reg No. INH00000206) of SEBI (Research Analyst) Regulations 2014. ASBL is a wholly owned subsidiary of Ashika Global Securities (P) Ltd., a RBI registered non-deposit taking NBFC Company. Ashika group (details is enumerated on our website www.ashikagroup.com) is an integrated financial service provider inter alia engaged in the business of Investment Banking, Corporate Lending, Commodity Broking, Debt Syndication & Other Advisory Services.

There were no significant and material disciplinary actions against ASBL taken by any regulatory authority during last three years.

Disclosure

ASBL or its associates, its Research Analysts (including their relatives) may have financial interest in the subject company(ies). However, the said financial interest is not limited to having an open stock market position in /acting as advisor to /having a loan transaction with the subject company(ies) apart from registration as clients.

- ASBL or its Research Analysts (including their relatives) do not have any actual / beneficial ownership of 1% or more of securities of the subject company(ies) at the end of the month immediately preceding the date of publication of this report or date of the public appearance. However ASBL's associates may have actual / beneficial ownership of 1% or more of securities of the subject company(ies).
- ASBL or their Research Analysts (including their relatives) do not have any other material conflict of interest at the time of publication of this research report or date of the public appearance. However ASBL's associates might have an actual / potential conflict of interest (other than ownership).
- ASBL or its associates may have received compensation for investment banking, merchant banking, and brokerage services and for other products and services from the subject companies during the preceding 12 months. However, ASBL or its associates or its Research analysts (forming part of Research Desk) have not received any compensation or other benefits from the subject companies or third parties in connection with the research report. Moreover, Research Analysts have not received any compensation from the companies mentioned herein in the past twelve months.
- ASBL or their Research Analysts have not managed or co-managed public offering of securities for the subject company(ies) in the past twelve months. However ASBL's associates may have managed or co-managed public offering of securities for the subject company(ies) in the past twelve months.
- Research Analysts have not served as an officer, director or employee of the companies mentioned in the report.
- Neither ASBL nor its Research Analysts have been engaged in market making activity for the companies mentioned in the report.

Disclaimer

The research recommendation and information herein are solely for the personal information of the authorized recipient and does not construe to be an offer documents or any investment, legal or taxation advice or solicitation of any action based upon it. This report is not for public distribution or use by any person or entity, where such distribution, publication, availability or use would be contrary to law, regulation or subject to any registration or licensing requirement. We will not treat recipients as customer by virtue of their receiving this report. The report is based upon the information obtained from public sources that we consider reliable, but we do not guarantee its accuracy or completeness. ASBL shall not be in anyways responsible for any loss or damage that may arise to any such person from any inadvertent error in the information contained in this report. The recipients of this report should rely on their own investigations.