

# Technical Report

## Closing Brief

Markets ended marginally in green amid choppy trading for the 5<sup>th</sup> consecutive session. Markets consolidate in the absence of any major triggers. Nifty shut the shop at 10348.75 up by 6.45 points or 0.06%

## Technical Build up

- ❖ Doji candle with decrease in volume
- ❖ Buy crossover in oscillators.
- ❖ Lower band of Bollinger exist at 10150
- ❖ Crucial moving average of 20/50 SMA are at 10320 and 10159
- ❖ 200 SMA trend deciding level exist at 9633

## Outlook for the day

Indian Equity market closed higher for the sixth straight day on Thursday helped by gains in IT stocks. On sectoral front IT, MEDIA and PHARMA were outperforming the Nifty while FMCG, BANK, AUTO, METAL, FIN SERVICE and PSU BANK were underperforming it. On the technical front, Nifty formed yet another Doji candle for the third day in a row, closed approximately around the same level but remains volatile throughout the day. An indecisive pattern which does not augur well for the bulls. A clear breakout or a breakdown will decide the direction of markets in the near term. All the crucial averages synchronizing around a single point indicating of a spurt in price action in days to come. The rising trendline support from 30th December now hangs around the psychological level of 10000. Going ahead it seems that Nifty can move towards 10400-10500 levels while multiple strong supports exist at lower levels of 10100 & 10200-10250. During the day immediate support around 10305 levels and next support is at 10260 levels. Immediate resistance is around 10370 and next resistance is around 10460 levels. On the option front maximum Put OI is at 10300 and 10000 strike while maximum Call OI is at 10500 followed by 10400 strikes.

## Technical & Derivative Report

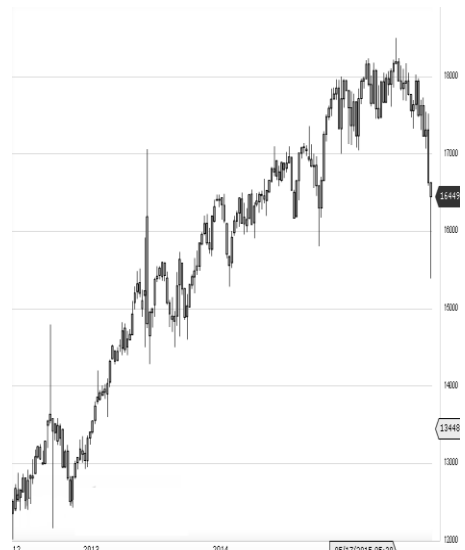
| World Indices | LTP   | Daily Ch(Pts) | Daily Ch(%) |
|---------------|-------|---------------|-------------|
| Dow Jones     | 23523 | -64           | -0.27       |
| Nasdaq        | 6867  | 4             | 0.09        |
| S&P 500       | 2597  | -1            | -0.08       |
| FTSE 100      | 7417  | -1            | -0.02       |
| DAX           | 13008 | -6            | -0.05       |
| Hang Seng     | 29816 | 108           | 0.36        |
| Nikkei        | 22421 | -101          | -0.45       |
| Sensex        | 33588 | 26            | 0.08        |
| Nifty         | 10348 | 6             | 0.06        |

| Commodity /Forex     | LTP     | Daily 1.1Ch(Pts) | Daily Ch(%) |
|----------------------|---------|------------------|-------------|
| Gold (\$/Oz)         | 1295.90 | -0.90            | -0.07       |
| Silver (\$/Oz)       | 17.20   | -0.02            | -0.09       |
| Copper(USD/lb.)      | 317.55  | 1.65             | 0.52        |
| Brent Crude(USD/bbl) | 63.45   | -0.10            | -0.16       |
| USD/INR              | 64.57   | -0.0059          | -0.09       |
| USD/YEN              | 111.33  | 0.11             | 0.10        |
| USD/EUR              | 1.1848  | -0.0003          | -0.03       |

| Support/Resistance levels for Indian Equity Indices |       |       |       |       |       |
|---|-------|-------|-------|-------|-------|
|   | S1    | S2    | CMP   | R1    | R2    |
| Sensex  | 33445 | 33290 | 33588 | 33660 | 33960 |
| Nifty   | 10305 | 10260 | 10348 | 10370 | 10460 |
| Nifty (Fut)   | 10325 | 10280 | 10366 | 10390 | 10480 |

| Pivot Level |       |
|-------------|-------|
| Sensex      | 10343 |
| Nifty       | 33575 |

**US:** U.S. markets were closed on Thursday for the Thanksgiving holiday. Technically DJIA is presently trading at the 5<sup>th</sup> leg through Elliot wave count with negative divergence in oscillators.



| Increase in OI with Increase in Price (Long Buildup) |         |         |            |          |            | Increase in OI with Decrease in Price (Short Buildup) |         |         |            |          |            |
|--|---------|---------|------------|----------|------------|---|---------|---------|------------|----------|------------|
| Symbol   | Prev OI | Curr OI | OI Chg (%) | Curr Pr. | Pr.Chg (%) | Symbol  | Prev OI | Curr OI | OI Chg (%) | Curr Pr. | Pr.Chg (%) |
| ENGINE   | 17584   | 19453   |            |          |            | ICICIPR   | 69277   | 75894   |            |          |            |
| RSIN   | 000     | 000     | 10.6       | 183.3    | 0.7        | ULI   | 00      | 00      | 9.6        | 380.5    | [3.8]      |
| BIOCO  | 74106   | 81630   |            |          |            |   | 37960   | 40770   |            |          |            |
| N  | 00      | 00      | 10.2       | 413.95   | 0.9        | MFSL  | 00      | 00      | 7.4        | 566      | [3.4]      |
|  | 99850   | 10855   |            |          |            | DRRED   | 40844   | 43790   |            | 2316.9   |            |
| SRF  | 0       | 00      | 8.7        | 1869     | 4.5        | DY  | 00      | 00      | 7.2        | 5        | [2.1]      |
| SYNDIB   | 19917   | 21150   |            |          |            | HEXAW   | 28590   | 30240   |            |          |            |
| ANK  | 000     | 000     | 6.2        | 92       | 4.7        | ARE   | 00      | 00      | 5.8        | 329.85   | [0.9]      |
| TVSMO  | 51840   | 54960   |            |          |            | HINDZI  | 66144   | 69920   |            |          |            |
| TOR  | 00      | 00      | 6          | 734      | 2.3        | NC  | 00      | 00      | 5.7        | 313.1    | [0.6]      |

# Derivative Report

## Technical & Derivative Report

Nifty gained by 0.06% with Nifty future shaded 0.3 lakh shares in open interest and stock future added 17.4 Lakh shares in open interest.

- Nifty PCR increased to 1.35 from 1.32
- Total Nifty Calls added 6.0 lakh shares in open interest.
- Total Nifty Puts added 30.0 lakh shares in open interest.
- Maximum open interest (Nifty) in Calls for Oct series is at 10500 and 10300 put.
- FII's bought net Rs.73.22 Cr(provisional), while DIIs bought net Rs.222.21 Cr in cash market.
- FII sold net Rs.239.70 Cr in F&O
- Securities in Ban Period: DHFL, DLF, FORTIS, HDIL, INFIBEAM, JETAIRWAYS, JISJALEQS, JPASSOCIAT, JSWENERGY, JUSTDIAL, RCOM, TV18BRDCST & WOCKPHARMA

### Nifty Tracker

| PARTICULARS         | 23/11/2017 | 22/11/2017 | 21/11/2017 | 20/11/2017 |
|---------------------|------------|------------|------------|------------|
| Spot                | 10348.75   | 10342.3    | 10326.9    | 10298.75   |
| % Change in Spot    | 0.06%      | 0.15%      | 0.27%      | 0.15%      |
| Nifty(FUT) Nov      | 10366.65   | 10357.95   | 10351.9    | 10320.05   |
| Nifty(FUT) Nov Vol. | 100288     | 84060      | 87712      | 65964      |
| Nifty(FUT) Nov - OI | 21183600   | 21734175   | 22165500   | 23123250   |
| Nifty(FUT) Dec      | 10400.55   | 10393.9    | 10387.15   | 10355.2    |
| Nifty(FUT) Dec Vol. | 15833      | 11257      | 10373      | 7573       |
| Nifty(FUT) Dec - OI | 3959025    | 3452925    | 3016500    | 2670300    |

### Trade Statistics for 23/11/2017

| PARTICULARS            | NO. OF CONTRACTS | TURNOVER (RS. CR.) | PUT CALL RATIO |
|------------------------|------------------|--------------------|----------------|
| NSE Index Futures      | 1,85,266         | 16117              | -              |
| NSE Stock Futures      | 6,93,578         | 49123              | -              |
| NSE Index Options      | 1,06,23,457      | 10,32,872.33       | -              |
| NSE Stock Options      | 4,86,477         | 35924              | 0.4            |
| NSE F&O Total Turnover | 1,19,88,778      | 1,134,036          | 0.78           |
| NSE Cash Turnover      | -                | 29,651.46          | -              |
| BSE Cash Turnover      | -                | 4,422.42           | -              |
| Total Turnover         | -                | 1168110            | -              |

### FII Corner (F&O)

| FII NET BUYING/SELLING & CHANGE IN OPEN INTEREST (Cr. Rupee) |                     |                         |                     |                         |                     |                         |
|--|---------------------|-------------------------|---------------------|-------------------------|---------------------|-------------------------|
| PARTICULARS  | 23/11/2017          |                         | 22/11/2017          |                         | 21/11/2017          |                         |
|  | Net Buying /Selling | Change In Open interest | Net Buying /Selling | Change In Open interest | Net Buying /Selling | Change In Open interest |
| Index Future   | 144                 | 144                     | 142                 | 9                       | 878                 | -415                    |
| Index option   | -505                | -2231                   | -102                | 1706                    | -266                | 5063                    |
| Stock Future   | 101                 | -950                    | -231                | -10                     | -1434               | 1399                    |
| Stock option   | 21                  | 80                      | 1                   | 102                     | 12                  | 170                     |
| Total  | -239                | -2957                   | -190                | 1807                    | -810                | 6217                    |

### Market Open Interest

| ADDITION/REDUCTION IN MARKET OPEN INTEREST |            |            |            |            |            |
|--|------------|------------|------------|------------|------------|
| Contracts                                  | 23/11/2017 | 22/11/2017 | 21/11/2017 | 20/11/2017 | 17/11/2017 |
| Index Futures                              | 146        | -90        | -503       | 413        | 492        |
| Index Options                              | 154        | 457        | 1523       | 1444       | 825        |
| Stock Futures                              | 16800      | 7611       | 7421       | 8793       | -27558     |
| Stock Options                              | 429        | 467        | 390        | 897        | 20112      |
| F&O Total                                  | 17529      | 8445       | 8831.77    | 11547.07   | -6128.91   |

## Nifty Option Open Interest Statistics

| NIFTY OPTIONS HIGHEST ADDITION IN OPEN INTEREST |        |             |                  |        |               |              |
|---|--------|-------------|------------------|--------|---------------|--------------|
| Expiry  | Strike | Option Type | Settlement Price | Volume | Open Interest | Change In OI |
| 30-Nov-17                                       | 10300  | PE          | 37.05            | 342899 | 6025500       | 588225       |
| 30-Nov-17                                       | 10200  | PE          | 17.65            | 218552 | 5213775       | 537375       |
| 30-Nov-17                                       | 9900   | PE          | 2.65             | 45986  | 2884650       | 491250       |
| 30-Nov-17                                       | 10000  | PE          | 4.55             | 89338  | 5361450       | 414450       |
| 30-Nov-17                                       | 10600  | CE          | 5.35             | 96085  | 4544625       | 411000       |
| 30-Nov-17                                       | 10350  | CE          | 68.35            | 59313  | 1300650       | 325575       |
| 30-Nov-17                                       | 10350  | PE          | 52.6             | 47077  | 1343325       | 193125       |
| 30-Nov-17                                       | 10500  | CE          | 17.75            | 229324 | 6298875       | 165450       |
| 28-Dec-17                                       | 10600  | CE          | 68.15            | 12168  | 1116825       | 137325       |
| 30-Nov-17                                       | 10150  | PE          | 11.9             | 23034  | 473850        | 137100       |

| NIFTY OPTIONS HIGHEST REDUCTION IN OPEN INTEREST |        |             |                  |        |               |              |
|--|--------|-------------|------------------|--------|---------------|--------------|
| Expiry   | Strike | Option Type | Settlement Price | Volume | Open Interest | Change In OI |
| 30-Nov-17  | 10400  | CE          | 46.55            | 339792 | 5043900       | -193425      |
| 30-Nov-17  | 11000  | CE          | 0.7              | 8892   | 1359075       | -144675      |
| 30-Nov-17  | 10700  | CE          | 1.95             | 40872  | 2569650       | -136200      |
| 30-Nov-17  | 10800  | CE          | 0.9              | 13176  | 2124600       | -133425      |
| 30-Nov-17  | 10150  | CE          | 218.85           | 1473   | 45525         | -81300       |
| 30-Nov-17  | 10100  | CE          | 269.05           | 4704   | 546375        | -78825       |
| 30-Nov-17  | 10900  | CE          | 0.8              | 6770   | 1335150       | -76800       |
| 30-Nov-17  | 10200  | CE          | 180.95           | 21169  | 1223025       | -76350       |
| 30-Nov-17  | 9500   | PE          | 1.05             | 5161   | 1079100       | -52800       |
| 28-Dec-17  | 9900   | PE          | 37.45            | 5294   | 628600        | -51950       |

## Stock Option Open Interest Statistics

| STOCK OPTIONS WITH HIGHEST ADDITION IN OPEN INTEREST |           |        |             |              |        |               |              |
|--|-----------|--------|-------------|--------------|--------|---------------|--------------|
| Symbol   | Expiry    | Strike | Option Type | Settl. Price | Volume | Open Interest | Change in OI |
| IDEA   | 30-Nov-17 | 100    | CE          | 1.55         | 1536   | 5712000       | 2212000      |
| BHEL   | 30-Nov-17 | 95     | CE          | 1.7          | 3109   | 4777500       | 1177500      |
| TATAPOWER  | 28-Dec-17 | 90     | CE          | 7.1          | 149    | 1584000       | 1152000      |
| TATAGLOBAL   | 28-Dec-17 | 250    | CE          | 33.6         | 223    | 2326500       | 949500       |
| BHEL   | 30-Nov-17 | 100    | CE          | 0.85         | 2905   | 4890000       | 802500       |
| BHEL   | 30-Nov-17 | 97.5   | CE          | 1.1          | 465    | 1335000       | 795000       |
| SAIL   | 30-Nov-17 | 100    | CE          | 0.15         | 165    | 4752000       | 720000       |
| SBIN   | 30-Nov-17 | 340    | CE          | 5.05         | 3174   | 5457000       | 705000       |
| FORTIS   | 30-Nov-17 | 130    | PE          | 2.35         | 598    | 1026000       | 637200       |
| IFCI   | 30-Nov-17 | 22.5   | PE          | 0.1          | 95     | 2970000       | 528000       |

| STOCK OPTIONS WITH HIGHEST REDUCTION IN OPEN INTEREST |           |        |             |              |        |           |              |
|---|-----------|--------|-------------|--------------|--------|-----------|--------------|
| Symbol  | Expiry    | Strike | Option Type | Settl. Price | Volume | Open Int. | Change in OI |
| BHEL  | 30-Nov-17 | 90     | CE          | 4.25         | 1014   | 2107500   | -990000      |
| TV18BRDCST  | 30-Nov-17 | 50     | CE          | 0.15         | 176    | 4437000   | -986000      |
| SYNDIBANK   | 30-Nov-17 | 90     | CE          | 3.05         | 558    | 2115000   | -774000      |
| GMRINFRA  | 30-Nov-17 | 17.5   | CE          | 0.2          | 210    | 19800000  | -675000      |
| INFY  | 30-Nov-17 | 980    | CE          | 19.75        | 5106   | 491500    | -563000      |
| TV18BRDCST  | 30-Nov-17 | 45     | CE          | 1.7          | 79     | 2074000   | -527000      |
| SAIL  | 30-Nov-17 | 90     | CE          | 0.65         | 553    | 8136000   | -516000      |
| APOLLOTYRE  | 30-Nov-17 | 250    | CE          | 6.65         | 1224   | 792000    | -486000      |
| SBIN  | 30-Nov-17 | 320    | PE          | 1.65         | 922    | 3357000   | -480000      |
| RELIANCE  | 30-Nov-17 | 940    | CE          | 17.05        | 4877   | 1076000   | -469000      |

## Research Team

| Name                  | Designation                    | Email ID                     | Contact No.      |
|-----------------------|--------------------------------|------------------------------|------------------|
| Paras Bothra          | President Equity Research      | paras@ashikagroup.com        | +91 22 6611 1704 |
| Krishna Kumar Agarwal | Equity Research Analyst        | krishna.a@ashikagroup.com    | +91 33 4036 0646 |
| Partha Mazumder       | Equity Research Analyst        | partha.m@ashikagroup.com     | +91 33 4036 0647 |
| Arijit Malakar        | Equity Research Analyst        | amalakar@ashikagroup.com     | +91 33 4036 0644 |
| Kapil Jagasia         | Equity Research Analyst        | kapil.j@ashikagroup.com      | +91 22 6611 1715 |
| Tirthankar Das        | Technical & Derivative Analyst | tirthankar.d@ashikagroup.com | +91 33 4036 0645 |

Ashika Stock Broking Limited ("ASBL") or Research Entity has started its journey in the year 1994 and is engaged in the business of broking services, depository services, distributor of financial products (Mutual fund, IPO & Bonds). This research report has been prepared and distributed by ASBL in the sole capacity of a Research Analyst (Reg No. INH00000206) of SEBI (Research Analyst) Regulations 2014. ASBL is a wholly owned subsidiary of Ashika Global Securities (P) Ltd., a RBI registered non-deposit taking NBFC Company. Ashika group (details is enumerated on our website [www.ashikagroup.com](http://www.ashikagroup.com)) is an integrated financial service provider inter alia engaged in the business of Investment Banking, Corporate Lending, Commodity Broking, Debt Syndication & Other Advisory Services.

There were no significant and material disciplinary actions against ASBL taken by any regulatory authority during last three years.

### Disclosure

ASBL or its associates, its Research Analysts (including their relatives) may have financial interest in the subject company(ies). However, the said financial interest is not limited to having an open stock market position in /acting as advisor to /having a loan transaction with the subject company(ies) apart from registration as clients.

- ASBL or its Research Analysts (including their relatives) do not have any actual / beneficial ownership of 1% or more of securities of the subject company(ies) at the end of the month immediately preceding the date of publication of this report or date of the public appearance. However ASBL's associates may have actual / beneficial ownership of 1% or more of securities of the subject company(ies).
- ASBL or their Research Analysts (including their relatives) do not have any other material conflict of interest at the time of publication of this research report or date of the public appearance. However ASBL's associates might have an actual / potential conflict of interest (other than ownership).
- ASBL or its associates may have received compensation for investment banking, merchant banking, and brokerage services and for other products and services from the subject companies during the preceding 12 months. However, ASBL or its associates or its Research analysts (forming part of Research Desk) have not received any compensation or other benefits from the subject companies or third parties in connection with the research report. Moreover, Research Analysts have not received any compensation from the companies mentioned herein in the past twelve months.
- ASBL or their Research Analysts have not managed or co-managed public offering of securities for the subject company(ies) in the past twelve months. However ASBL's associates may have managed or co-managed public offering of securities for the subject company(ies) in the past twelve months.
- Research Analysts have not served as an officer, director or employee of the companies mentioned in the report.
- Neither ASBL nor its Research Analysts have been engaged in market making activity for the companies mentioned in the report.

### Disclaimer

The research recommendation and information herein are solely for the personal information of the authorized recipient and does not construe to be an offer documents or any investment, legal or taxation advice or solicitation of any action based upon it. This report is not for public distribution or use by any person or entity, where such distribution, publication, availability or use would be contrary to law, regulation or subject to any registration or licensing requirement. We will not treat recipients as customer by virtue of their receiving this report. The report is based upon the information obtained from public sources that we consider reliable, but we do not guarantee its accuracy or completeness. ASBL shall not be in anyways responsible for any loss or damage that may arise to any such person from any inadvertent error in the information contained in this report. The recipients of this report should rely on their own investigations.