

Technical Report

Closing Brief

Nifty opened at fresh all time high staging almost a 120 points gap up a move that was rooted in the 2.11 lakh crore recapitalisation announced by the government. Nifty ended higher with gains of 0.85% to close at fresh high of 10293.40 up 85 points for the day.

Technical Build up

- ❖ Bullish candle with increase in volume
- ❖ Buy crossover in oscillators.
- ❖ Upper band of Bollinger exist at 10332
- ❖ Crucial moving average of 20/50 SMA are at 10007 and 9967
- ❖ 200 SMA trend deciding level exist at 9425

Outlook for the day

Indian Equity market reclaimed its record high, mainly supported by strong surge in the PSU banking pack. The massive plan to recapitalise the PSU banks by Rs 2.11 lakh crore lead the banks to rally. Market also reacted positively to the government's infrastructure push after it approved Rs 7 lakh crore worth highway projects. On the technical front, Nifty formed a Hanging Man candle formation in daily chart which is a bearish reversal candlestick pattern that is formed at the end of an uptrend. Nifty also need to sustain above the 150% projected retracement level of 10265 to maintain its uptrend and eye for a higher target of 10535 (161.8% projected retracement). During the day immediate support placed at 10240 and below at 10200 while resistance comes in at 10340-10350 for the next couple of trading sessions. On the option front maximum Put open interest is at strike price 10000 followed by 10200, while maximum Call OI were seen in 10300 followed by 10400 strikes. Volatility I likely to spike up with the expiry of October F&O contract

Technical & Derivative Report

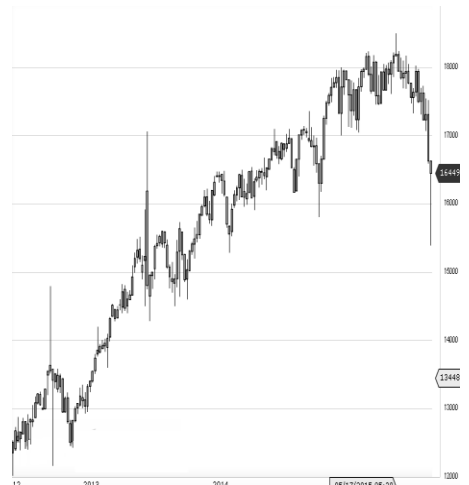
World Indices	LTP	Daily Ch(Pts)	Daily Ch(%)
Dow Jones	23329	-112	0.48
Nasdaq	6563	-34	-0.52
S&P 500	2557	-11	-0.47
FTSE 100	7447	-79	-1.05
DAX	12953	-59	-0.46
Hang Seng	28261	-41	-0.15
Nikkei	21726	19	0.08
Sensex	33042	435	1.33
Nifty	10295	87	0.86

Commodity /Forex	LTP	Daily 1.1Ch(Pts)	Daily Ch(%)
Gold (\$/Oz)	1281.70	2.70	0.21
Silver (\$/Oz)	17.01	0.09	0.50
Copper(USD/lb.)	318.55	0.25	0.08
Brent			
Crude(USD/bbl)	58.36	-0.08	-0.14
USD/INR	64.89	-0.17	-0.26
USD/YEN			
	113.45	-0.29	-0.25
USD/EUR	1.1829	0.0016	0.14

Support/Resistance levels for Indian Equity Indices					
	S1	S2	CMP	R1	R2
Sensex	32860	32725	33042	33190	33390
Nifty	10240	10200	10295	10340	10400
Nifty (Fut)	10235	10195	10289	10335	10395

Pivot Level	
Sensex	32988
Nifty	10292

US: US Market had their worst day in two months on Wednesday as a batch of corporate earnings reports disappointed investors. Concerns of rising bond yields also dampened sentiment in stocks. Technically DJIA is presently trading at the 5th leg through Elliot wave count with negative divergence in oscillators.



Increase in OI with Increase in Price (Long Buildup)

Symbol	Prev OI	Curr OI	OI Chg (%)	Curr Pr.	Pr.Chg (%)
CONCO	1121250	1400625	24.9	1360.15	1.2
R	2524550	2984450			
PNB	0	0	18.2	199	43.8
M&M	3208500	3763000	17.3	1366.9	1
UBL	732900	829500	13.2	923.2	7.4
JPASSO	1.14E+0	1.29E+0			
CIAT	8	8	12.6	20.2	7.2

Increase in OI with Decrease in Price (Short Buildup)

Symbol	Prev OI	Curr OI	OI Chg (%)	Curr Pr.	Pr.Chg (%)
CADILA	2748800	3280000	19.3	480.9	[0.6]
HC		1002750			
DHFL	8517000	0	17.7	582.35	[2.0]
BALKRIS					
IND	303600	351600	15.8	1645	[2.1]
LICHSGF					
IN	5511000	6248000	13.4	617.7	[2.8]
HCLTEC					
H	4781700	5219200	9.2	904.5	[0.9]

Nifty gained by 0.86% with Nifty future added 5.7 lakh shares in open interest and stock future shaded 615.5 Lakh shares in open interest.

- Nifty PCR increased to 1.61 from 1.60
- Total Nifty Calls shaded 4.1 lakh shares in open interest.
- Total Nifty Puts shaded 3.8 lakh shares in open interest.
- Maximum open interest (Nifty) in Calls for Oct series is at 10300 and 10000 put.
- FII's bought net Rs.3582.5 Cr(provisional), while DIIs sold net Rs.155.71 Cr in cash market.
- FII bought net Rs.1051.27 Cr in F&O
- Securities in Ban Period: DHFL, IBREALEST, INFIBEAM, IRB, JPASSOCIAT, JSWENERGY & RCOM

Nifty Tracker

PARTICULARS	25/10/2017	24/10/2017	23/10/2017	18/10/2017
Spot	10295.35	10207.7	10184.85	10146.55
% Change in Spot	0.86%	0.22%	0.38%	-0.63%
Nifty(FUT) Oct	10289.9	10219.3	10189.7	10146.15
Nifty(FUT) Oct Vol.	161357	146990	153030	45171
Nifty(FUT) Oct - OI	17471250	20979975	24397650	26127375
Nifty(FUT) Nov	10325.35	10255.15	10224.25	10171.3
Nifty(FUT) Nov Vol.	102086	86339	52284	6490
Nifty(FUT) Nov - OI	13136850	9160875	4672575	2065275

Trade Statistics for 25/10/2017

PARTICULARS	NO. OF CONTRACTS	TURNOVER (RS. CR.)	PUT CALL RATIO
NSE Index Futures	4,92,001	42972	-
NSE Stock Futures	22,27,894	1,68,204.80	-
NSE Index Options	1,03,55,555	9,15,136.26	-
NSE Stock Options	9,40,287	76085	0.48
NSE F&O Total Turnover	1,40,15,737	1,202,398	0.88
NSE Cash Turnover	-	55,954.18	-
BSE Cash Turnover	-	6,014.32	-
Total Turnover	-	1264366	-

FII Corner (F&O)

FII NET BUYING/SELLING & CHANGE IN OPEN INTEREST (Cr. Rupee)						
PARTICULARS	25/10/2017		24/10/2017		23/10/2017	
	Net Buying /Selling	Change In Open interest	Net Buying /Selling	Change In Open interest	Net Buying /Selling	Change In Open interest
Index Future	-1098	3543	-1348	1672	-657	48
Index option	83	1222	762	1205	22	2496
Stock Future	2009	2273	-376	763	111	498
Stock option	56	615	311	146	-24	280
Total	1050	7652	-651	3786	-548	3321

Market Open Interest

ADDITION/REDUCTION IN MARKET OPEN INTEREST					
Contracts	25/10/2017	24/10/2017	23/10/2017	18/10/2017	17/10/2017
Index Futures	1885	1789	630	-402	-565
Index Options	864	3157	3039	-1150	586
Stock Futures	-607	5745	4628	-31151	19002
Stock Options	-1800	969	818	321	1276
F&O Total	341	11659	9115.05	-32381.34	20299.27

Nifty Option Open Interest Statistics

NIFTY OPTIONS HIGHEST ADDITION IN OPEN INTEREST						
Expiry	Strike	Option Type	Settlement Price	Volume	Open Interest	Change In OI
26-Oct-17	10300	PE	31.9	372713	2794650	1645650
26-Oct-17	10350	CE	8.95	279999	2141325	1179150
26-Oct-17	10250	PE	14.8	191682	1424550	875100
30-Nov-17	10300	PE	130.7	38852	1148700	525075
30-Nov-17	10700	CE	18.75	27634	1040925	514725
30-Nov-17	10200	PE	95.8	52921	2164650	453600
30-Nov-17	8300	CE	2000.85	5670	1224600	375300
30-Nov-17	10600	CE	34.15	36698	1160475	344925
26-Oct-17	10300	CE	24.75	780454	4305150	342900
30-Nov-17	9800	PE	27.75	22812	1594875	341250

NIFTY OPTIONS HIGHEST REDUCTION IN OPEN INTEREST						
Expiry	Strike	Option Type	Settlement Price	Volume	Open Interest	Change In OI
26-Oct-17	10100	PE	2	322712	4336950	-1686750
26-Oct-17	10200	CE	93.95	259104	1895925	-1662525
26-Oct-17	10000	PE	1.05	223877	6319650	-737175
26-Oct-17	10250	CE	52.35	167246	1170825	-711900
26-Oct-17	8200	CE	2083.05	7780	832650	-480900
26-Oct-17	9900	PE	0.85	86253	4297500	-457950
26-Oct-17	10100	CE	188.35	31329	1333500	-423675
26-Oct-17	10000	CE	284.8	12394	1462050	-383100
26-Oct-17	9500	PE	0.55	24351	3153825	-379650
26-Oct-17	10150	PE	3.55	135529	985350	-376800

Stock Option Open Interest Statistics

STOCK OPTIONS WITH HIGHEST ADDITION IN OPEN INTEREST							
Symbol	Expiry	Strike	Option Type	Settl. Price	Volume	Open Interest	Change in OI
GMRINFRA	30-Nov-17	20	CE	0.7	455	10845000	5760000
SUZLON	30-Nov-17	17.5	CE	0.5	326	8340000	3600000
SBIN	26-Oct-17	330	CE	4	15196	3120000	3117000
SBIN	26-Oct-17	300	PE	1.6	10452	3312000	3027000
PNB	26-Oct-17	190	CE	11.95	6070	2912000	2912000
SBIN	26-Oct-17	290	PE	0.85	6373	2628000	2433000
SOUTHBANK	30-Nov-17	35	CE	0.5	102	3048972	2419293
GMRINFRA	30-Nov-17	17.5	PE	0.7	98	3330000	2340000
SAIL	26-Oct-17	70	CE	0.5	1375	2796000	2340000
SBIN	26-Oct-17	320	CE	9.15	17983	2283000	2202000

STOCK OPTIONS WITH HIGHEST REDUCTION IN OPEN INTEREST							
Symbol	Expiry	Strike	Option Type	Settl. Price	Volume	Open Int.	Change in OI
GMRINFRA	26-Oct-17	17.5	CE	0.95	733	8550000	-10800000
SBIN	26-Oct-17	260	CE	64.4	3256	3507000	-3474000
SUZLON	26-Oct-17	17.5	CE	0.05	475	24510000	-3420000
SBIN	26-Oct-17	270	CE	53.85	2261	1500000	-3120000
SBIN	26-Oct-17	280	CE	44.8	2514	1101000	-3072000
ICICIBANK	26-Oct-17	280	CE	23.95	2782	1534500	-2769250
ICICIBANK	26-Oct-17	285	CE	19.8	2932	800250	-2224750
SAIL	26-Oct-17	62.5	CE	4.6	708	996000	-2028000
JPASSOCIAT	26-Oct-17	20	CE	1.05	63	20536000	-1972000
RECLTD	26-Oct-17	160	CE	4.15	998	2286000	-1920000

Research Team

Name	Designation	Email ID	Contact No.
Paras Bothra	President Equity Research	paras@ashikagroup.com	+91 22 6611 1704
Krishna Kumar Agarwal	Equity Research Analyst	krishna.a@ashikagroup.com	+91 33 4036 0646
Partha Mazumder	Equity Research Analyst	partha.m@ashikagroup.com	+91 33 4036 0647
Arijit Malakar	Equity Research Analyst	amalakar@ashikagroup.com	+91 33 4036 0644
Kapil Jagasia	Equity Research Analyst	kapil.j@ashikagroup.com	+91 22 6611 1715
Tirthankar Das	Technical & Derivative Analyst	tirthankar.d@ashikagroup.com	+91 33 4036 0645

Ashika Stock Broking Limited ("ASBL") or Research Entity has started its journey in the year 1994 and is engaged in the business of broking services, depository services, distributor of financial products (Mutual fund, IPO & Bonds). This research report has been prepared and distributed by ASBL in the sole capacity of a Research Analyst (Reg No. INH00000206) of SEBI (Research Analyst) Regulations 2014. ASBL is a wholly owned subsidiary of Ashika Global Securities (P) Ltd., a RBI registered non-deposit taking NBFC Company. Ashika group (details is enumerated on our website www.ashikagroup.com) is an integrated financial service provider inter alia engaged in the business of Investment Banking, Corporate Lending, Commodity Broking, Debt Syndication & Other Advisory Services.

There were no significant and material disciplinary actions against ASBL taken by any regulatory authority during last three years.

Disclosure

ASBL or its associates, its Research Analysts (including their relatives) may have financial interest in the subject company(ies). However, the said financial interest is not limited to having an open stock market position in /acting as advisor to /having a loan transaction with the subject company(ies) apart from registration as clients.

- 1) ASBL or its Research Analysts (including their relatives) do not have any actual / beneficial ownership of 1% or more of securities of the subject company(ies) at the end of the month immediately preceding the date of publication of this report or date of the public appearance. However ASBL's associates may have actual / beneficial ownership of 1% or more of securities of the subject company(ies).
- 2) ASBL or their Research Analysts (including their relatives) do not have any other material conflict of interest at the time of publication of this research report or date of the public appearance. However ASBL's associates might have an actual / potential conflict of interest (other than ownership).
- 3) ASBL or its associates may have received compensation for investment banking, merchant banking, and brokerage services and for other products and services from the subject companies during the preceding 12 months. However, ASBL or its associates or its Research analysts (forming part of Research Desk) have not received any compensation or other benefits from the subject companies or third parties in connection with the research report. Moreover, Research Analysts have not received any compensation from the companies mentioned herein in the past twelve months.
- 4) ASBL or their Research Analysts have not managed or co-managed public offering of securities for the subject company(ies) in the past twelve months. However ASBL's associates may have managed or co-managed public offering of securities for the subject company(ies) in the past twelve months.
- 5) Research Analysts have not served as an officer, director or employee of the companies mentioned in the report.
- 6) Neither ASBL nor its Research Analysts have been engaged in market making activity for the companies mentioned in the report.

Disclaimer

The research recommendation and information herein are solely for the personal information of the authorized recipient and does not construe to be an offer documents or any investment, legal or taxation advice or solicitation of any action based upon it. This report is not for public distribution or use by any person or entity, where such distribution, publication, availability or use would be contrary to law, regulation or subject to any registration or licensing requirement. We will not treat recipients as customer by virtue of their receiving this report. The report is based upon the information obtained from public sources that we consider reliable, but we do not guarantee its accuracy or completeness. ASBL shall not be in anyways responsible for any loss or damage that may arise to any such person from any inadvertent error in the information contained in this report. The recipients of this report should rely on their own investigations.