

Technical Report

Closing Brief

Benchmark Indices in yesterday's session finally ended over the 10000 level for the first time, the gains in yesterday's session were mostly laid by gains in metal, pharma stocks. Expecting a good season of corporate earnings and improving macroeconomic indicators have increased the confidence of investors. Nifty finally ended at 10020.65 levels up by 56.10 points or 0.56%.

Technical Build up

- ❖ Bullish candle with decrease in volume
- ❖ Buy crossover in oscillators.
- ❖ Upper band of Bollinger exist at 10070
- ❖ Crucial moving average of 20/50 SMA are at 9761 and 9650
- ❖ 200 SMA trend deciding level exist at 8917

Outlook for the day

Indian Equity market closed above 10,000 in a first and the Sensex set a fresh life high, powered by unabated capital inflows amid quarterly earnings optimism. Speculators covered their short positions ahead of the July derivatives expiry on Thursday, building up the momentum. On the technical front, Nifty formed bullish candle formed on the daily chart signifies that the market witnessed sustained buying interest from the bulls for the most part of the trading day, which is a bullish sign. Going forward, immediate support is placed around 9950 levels and the next support is placed around 9920 levels. On the higher side the immediate resistance is placed around 10050 levels and the next resistance is placed around 10075-10100 levels. On the option front Maximum Call open interest stands at strike price 10000 followed by 10100, while Maximum Put OI is at 9900, followed by 9700

Technical & Derivative Report

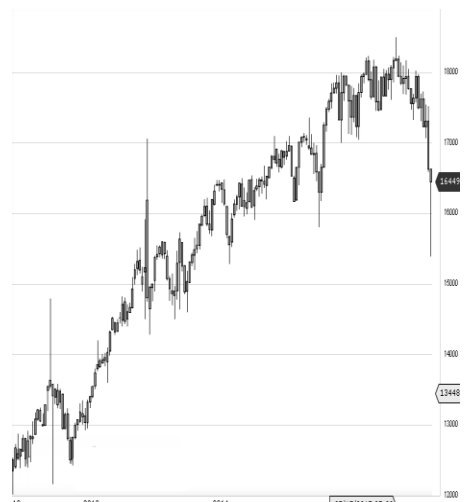
World Indices	LTP	Daily Ch(Pts)	Daily Ch(%)
Dow Jones	21711	97	0.45
Nasdaq	6422	10	0.16
S&P 500	2477	-	0.03
FTSE 100	7452	17	0.24
DAX	12305	40	0.33
Hang Seng	27017	76	0.29
Nikkei	20090	40	0.20
Sensex	32382	154	0.48
Nifty	10020	56	0.56

Commodity /Forex	LTP	Daily Ch(Pts)	Daily Ch(%)
Gold (\$/Oz)	1268.40	12.80	1.02
Silver (\$/Oz)	16.68	0.22	1.34
Copper(USD/lb.)	288.45	1.25	0.44
Brent Crude(USD/bbl)	50.79	-0.18	-0.35
USD/INR	64.36	-0.01	-0.02
USD/YEN	110.92	-0.26	-0.23
USD/EUR	1.1739	0.0005	0.04

Support/Resistance levels for Indian Equity Indices					
	S1	S2	CMP	R1	R2
Sensex	32150	32050	32382	32485	32650
Nifty	9950	9920	10020	10050	10100
Nifty (Fut)	9955	9925	10023	10055	10105

Pivot Level	
Sensex	
Nifty	10004

US: US market closed mostly higher on the back of strong earnings and following the Federal Reserve's decision to keep interest rates unchanged. Technically DJIA is presently trading at the 5th leg through Elliot wave count with negative divergence in oscillators.



Increase in OI with Increase in Price (Long Buildup)					
Symbol	Prev OI	Curr OI	OI Chg (%)	Curr Pr.	Pr.Chg (%)
KPIT	2636000	4216000	59.9	128.25	3.2

Increase in OI with Decrease in Price (Short Buildup)					
Symbol	Prev OI	Curr OI	OI Chg (%)	Curr Pr.	Pr.Chg (%)

Nifty gained by 0.56% with Nifty future added 9.3 lakh shares in open interest and stock future shaded 61.9 Lakh shares in open interest.

- Nifty PCR increased to 1.60 from 1.47
- Total Nifty Calls shaded 32.1 lakh shares in open interest.
- Total Nifty Puts added 37.8 lakh shares in open interest.
- Maximum open interest (Nifty) in Calls for July series is at 10000 and 9900 put.
- FII's sold net Rs. 60.6 Cr(provisional), while DIIs bought net Rs.676.61 Cr in cash market.
- FII bought net Rs.1650.97 Cr in F&O
- Securities in Ban Period: HDIL, IFCI, INFIBEAM, IRB, JPASSOCIAT, KSCL & UJJIVAN

Nifty Tracker

PARTICULARS	26/07/2017	25/07/2017	24/07/2017	21/07/2017
Spot	10020.65	9964.55	9966.4	9915.25
% Change in Spot	0.56%	-0.02%	0.52%	0.42%
Nifty(FUT) July	10023.05	9973.8	9955.8	9910.55
Nifty(FUT) July Vol.	126068	102677	111442	130311
Nifty(FUT) July - OI	12342150	14541525	16698075	18011550
Nifty(FUT) Aug	10065	10013.8	9994.55	9946.8
Nifty(FUT) Aug Vol.	79146	48336	42444	19670
Nifty(FUT) Aug - OI	11505300	8552550	6233175	4092825

Trade Statistics for 26/07/2017

PARTICULARS	NO. OF CONTRACTS	TURNOVER (RS. CR.)	PUT CALL RATIO
NSE Index Futures	2,94,136	24058	-
NSE Stock Futures	15,21,764	1,12,234.35	-
NSE Index Options	59,63,981	4,96,149.26	-
NSE Stock Options	8,06,684	62300	0.5
NSE F&O Total Turnover	85,86,565	694,741	0.97
NSE Cash Turnover	-	29,074.76	-
BSE Cash Turnover	-	4,052.80	-
Total Turnover	-	727869	-

FII Corner (F&O)

FII NET BUYING/SELLING & CHANGE IN OPEN INTEREST (Cr. Rupee)						
PARTICULARS	26/07/2017		25/07/2017		24/07/2017	
	Net Buying /Selling	Change In Open interest	Net Buying /Selling	Change In Open interest	Net Buying /Selling	Change In Open interest
Index Future	-801	1488	-998	1395	-519	1089
Index option	1763	3257	520	1642	721	3499
Stock Future	698	1118	282	332	1407	600
Stock option	-8	-205	-86	88	213	177
Total	1652	5658	-282	3456	1822	5366

Market Open Interest

ADDITION/REDUCTION IN MARKET OPEN INTEREST					
Contracts	26/07/2017	25/07/2017	24/07/2017	21/07/2017	20/07/2017
Index Futures	1785	535	1139	373	368
Index Options	1098	1131	2140	-788	-48
Stock Futures	4394	7289	9175	-25713	12643
Stock Options	-616	423	384	-441	1118
F&O Total	6661	9378	12838.27	-26569.29	14081.05

Nifty Option Open Interest Statistics

NIFTY OPTIONS HIGHEST ADDITION IN OPEN INTEREST						
Expiry	Strike	Option Type	Settlement Price	Volume	Open Interest	Change In OI
27-Jul-17	10000	PE	17.25	405722	4322550	1307475
27-Jul-17	10100	CE	5.75	303124	4171350	793275
31-Aug-17	10000	PE	103.6	35675	2669475	726675
31-Aug-17	9900	PE	73.65	38759	2129925	705150
27-Jul-17	9950	PE	6.4	252630	3174975	704850
27-Jul-17	10050	PE	37.4	34850	719250	689175
31-Aug-17	9800	PE	52.95	33905	3015750	688125
31-Aug-17	9600	PE	27.1	20973	2146500	384600
31-Aug-17	10100	CE	108.6	26531	2014200	359250
31-Aug-17	9500	PE	19.9	18451	2350275	306450

NIFTY OPTIONS HIGHEST REDUCTION IN OPEN INTEREST						
Expiry	Strike	Option Type	Settlement Price	Volume	Open Interest	Change In OI
27-Jul-17	10000	CE	38.95	576121	5373675	-2013225
27-Jul-17	9900	CE	118.6	153460	1324800	-1374075
27-Jul-17	9950	CE	73.85	119767	1370250	-1296300
27-Jul-17	9900	PE	3.65	432208	5472900	-896100
27-Jul-17	9800	PE	1.7	169405	4385025	-544275
27-Jul-17	9850	PE	2.15	112383	1435500	-460425
27-Jul-17	9500	PE	0.85	29724	4231200	-412425
27-Jul-17	9800	CE	219.65	16910	1111575	-402150
27-Jul-17	9600	PE	0.95	62692	4282575	-307950
27-Jul-17	9400	PE	0.8	11686	3594600	-261900

Stock Option Open Interest Statistics

STOCK OPTIONS WITH HIGHEST ADDITION IN OPEN INTEREST							
Symbol	Expiry	Strike	Option Type	Settl. Price	Volume	Open Interest	Change in OI
JPASSOCIAT	27-Jul-17	30	CE	0.4	1562	18020000	10880000
JPASSOCIAT	27-Jul-17	32.5	CE	0.1	598	11628000	9588000
JPASSOCIAT	31-Aug-17	30	CE	2.1	255	10200000	8160000
SUZLON	31-Aug-17	20	CE	0.9	665	12090000	4710000
JPASSOCIAT	31-Aug-17	30	PE	2.8	75	3944000	3944000
SUZLON	31-Aug-17	22.5	CE	0.4	291	7080000	3150000
JPASSOCIAT	27-Jul-17	27.5	PE	0.2	181	3468000	3060000
JPASSOCIAT	31-Aug-17	40	CE	0.35	84	2448000	2448000
JPASSOCIAT	31-Aug-17	35	CE	0.85	85	2380000	2312000
FEDERALBNK	27-Jul-17	120	CE	0.15	5068	7359000	2068000

STOCK OPTIONS WITH HIGHEST REDUCTION IN OPEN INTEREST							
Symbol	Expiry	Strike	Option Type	Settl. Price	Volume	Open Int.	Change in OI
SOUTHBANK	27-Jul-17	30	CE	0.65	568	5567688	-3943779
ADANIPOWER	27-Jul-17	32.5	CE	2.55	287	2760000	-3040000
JPASSOCIAT	27-Jul-17	27.5	CE	1.7	191	4556000	-2176000
ICICIBANK	27-Jul-17	340	PE	30.2	717	239250	-1801250
FEDERALBNK	27-Jul-17	117.5	CE	0.35	2529	3366000	-1661000
GMRINFRA	27-Jul-17	20	CE	0.1	95	18900000	-1620000
VEDL	27-Jul-17	275	CE	6.7	1722	703500	-1543500
ICICIBANK	27-Jul-17	300	CE	9.75	1559	1817750	-1474000
JINDALSTEL	27-Jul-17	140	CE	11.45	1037	738000	-1467000
VEDL	27-Jul-17	280	CE	2.9	5604	1949500	-1442000

Research Team

Name	Designation	Email ID	Contact No.
Paras Bothra	President Equity Research	paras@ashikagroup.com	+91 22 6611 1704
Krishna Kumar Agarwal	Equity Research Analyst	krishna.a@ashikagroup.com	+91 33 4036 0646
Partha Mazumder	Equity Research Analyst	partha.m@ashikagroup.com	+91 33 4036 0647
Arijit Malakar	Equity Research Analyst	amalakar@ashikagroup.com	+91 33 4036 0644
Kapil Jagasia, CFA	Equity Research Analyst	kapil.j@ashikagroup.com	+91 22 6611 1715
Tirthankar Das	Technical & Derivative Analyst	tirthankar.d@ashikagroup.com	+91 33 4036 0645

Ashika Stock Broking Limited ("ASBL") or Research Entity has started its journey in the year 1994 and is engaged in the business of broking services, depository services, distributor of financial products (Mutual fund, IPO & Bonds). This research report has been prepared and distributed by ASBL in the sole capacity of a Research Analyst (Reg No. INH00000206) of SEBI (Research Analyst) Regulations 2014. ASBL is a wholly owned subsidiary of Ashika Global Securities (P) Ltd., a RBI registered non-deposit taking NBFC Company. Ashika group (details is enumerated on our website www.ashikagroup.com) is an integrated financial service provider inter alia engaged in the business of Investment Banking, Corporate Lending, Commodity Broking, Debt Syndication & Other Advisory Services.

There were no significant and material disciplinary actions against ASBL taken by any regulatory authority during last three years.

Disclosure

ASBL or its associates, its Research Analysts (including their relatives) may have financial interest in the subject company(ies). However, the said financial interest is not limited to having an open stock market position in /acting as advisor to /having a loan transaction with the subject company(ies) apart from registration as clients.

- 1) ASBL or its Research Analysts (including their relatives) do not have any actual / beneficial ownership of 1% or more of securities of the subject company(ies) at the end of the month immediately preceding the date of publication of this report or date of the public appearance. However ASBL's associates may have actual / beneficial ownership of 1% or more of securities of the subject company(ies).
- 2) ASBL or their Research Analysts (including their relatives) do not have any other material conflict of interest at the time of publication of this research report or date of the public appearance. However ASBL's associates might have an actual / potential conflict of interest (other than ownership).
- 3) ASBL or its associates may have received compensation for investment banking, merchant banking, and brokerage services and for other products and services from the subject companies during the preceding 12 months. However, ASBL or its associates or its Research analysts (forming part of Research Desk) have not received any compensation or other benefits from the subject companies or third parties in connection with the research report. Moreover, Research Analysts have not received any compensation from the companies mentioned herein in the past twelve months.
- 4) ASBL or their Research Analysts have not managed or co-managed public offering of securities for the subject company(ies) in the past twelve months. However ASBL's associates may have managed or co-managed public offering of securities for the subject company(ies) in the past twelve months.
- 5) Research Analysts have not served as an officer, director or employee of the companies mentioned in the report.
- 6) Neither ASBL nor its Research Analysts have been engaged in market making activity for the companies mentioned in the report.

Disclaimer

The research recommendation and information herein are solely for the personal information of the authorized recipient and does not construe to be an offer documents or any investment, legal or taxation advice or solicitation of any action based upon it. This report is not for public distribution or use by any person or entity, where such distribution, publication, availability or use would be contrary to law, regulation or subject to any registration or licensing requirement. We will not treat recipients as customer by virtue of their receiving this report. The report is based upon the information obtained from public sources that we consider reliable, but we do not guarantee its accuracy or completeness. ASBL shall not be in anyways responsible for any loss or damage that may arise to any such person from any inadvertent error in the information contained in this report. The recipients of this report should rely on their own investigations.