

Technical Report

Closing Brief

Benchmark Indices ended on a 1 month low after the PSU Bank's led the decline. Nifty finally ended at 9511.40 down by -63.55 levels or -0.66%. On the sectoral front, Nifty FMCG closed with a meagre gain of 0.09%. Nifty Bank, Financial Services, IT, Media, PSU Bank, PVT Bank and Realty underperformed the broader indices

Technical Build up

- ❖ Bearish candle in weekly chart with increase in volume
- ❖ Sell crossover in oscillators.
- ❖ Upper band of Bollinger exist at 9746
- ❖ Crucial moving average of 20/50 SMA are at 9609 and 9427
- ❖ 200 SMA trend deciding level exist at 8802

Outlook for the day

Indian Equity market started the expiry week on feeble note and lost over half a percent after a report by RBI demanded higher provisioning for loans submitted under the insolvency process. Traders were booking profit ahead of many important events left like GST implementation and the June F&O expiry. On the technical front, Nifty broke its consolidation band of 9560-9700 zone on the down side and formed a Bearish candle on the daily chart. It has also broken below the upward sloping trendline since December 2016 onward. Now next important support for Nifty is seen from 200DEMA at 9434. On Elliot wave count Nifty to complete its corrective structure is in progress from the highs of 9709 in the form of 'Flat'. Going ahead immediate support is placed around 9460 levels and the next support is placed around 9410 levels. On the higher side, the immediate resistance is placed around 9570 levels and the next resistance is placed around 9620 levels. On the option front maximum Put OI is intact at 9500 followed by 9400 strike while maximum Call OI is shifting to 9600 followed by 9700 strike.

Technical & Derivative Report

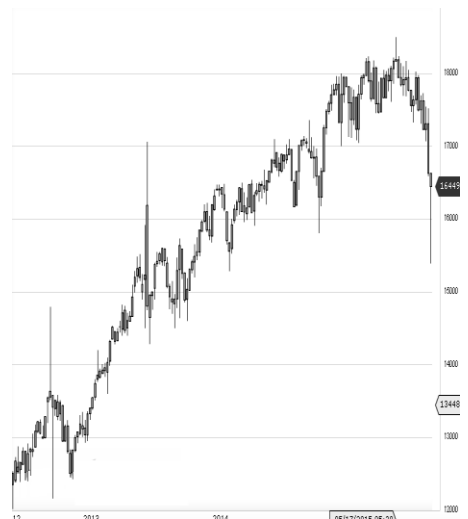
World Indices	LTP	Daily Ch(Pts)	Daily Ch(%)
Dow Jones	21310	-98	-0.46
Nasdaq	6146	-100	-1.61
S&P 500	2419	-19	-0.81
FTSE 100	7434	-12	-0.17
DAX	12671	-99	-0.78
Hang Seng	25744	-95	-0.37
Nikkei	20202	-22	-0.11
Sensex	31138	-	-
Nifty	9511	-63	-0.66

Commodity /Forex	LTP	Daily Ch(Pts)	Daily Ch(%)
Gold (\$/Oz)	1249.40	2.50	0.20
Silver (\$/Oz)	16.74	0.08	0.50
Copper(USD/lb.)	265.50	-0.65	-0.24
Brent Crude(USD/bbl)	46.41	-0.24	-0.51
USD/INR	64.53	0.01	0.03
USD/YEN	112.20	-0.15	-0.13
USD/EUR	1.1339	-	-

Support/Resistance levels for Indian Equity Indices					
	S1	S2	CMP	R1	R2
Sensex	30965	30800	31138	31335	31500
Nifty	9460	9410	9511	9570	9620
Nifty (Fut)	9465	9415	9513	9575	9625

Pivot Level	
Sensex	31204
Nifty	9533

US: US market closed lower on Tuesday as large-cap technology stocks fell more than 1 percent, while a Senate vote delay raised heighten policy uncertainty. Technically DJIA is presently trading at the 5th leg through Elliot wave count with negative divergence in oscillators.



Increase in OI with Increase in Price (Long Buildup)						Increase in OI with Decrease in Price (Short Buildup)					
Symbol	Prev OI	Curr OI	OI Chg (%)	Curr Pr.	Pr.Chg (%)	Symbol	Prev OI	Curr OI	OI Chg (%)	Curr Pr.	Pr.Chg (%)
BHARTI	2824380	3502000				HCLTEC					
ARTL	0	0	24	372.2	1.5	H	4939200	5934600	20.2	836.15	[2.0]
	1093250	1337250				TATAPO	2129400	2521800			
DABUR	0	0	22.3	290.2	0.4	WER	0	0	18.4	81.35	[0.5]
	2580480	2981760				PETRON					
WIPRO	0	0	15.6	257.95	0.1	ET	5916000	7002000	18.4	433.4	[0.9]
ADANIP						BAJAJ-AUTO	1314000	1542500	17.4	2783.65	[1.4]
ORTS	7660000	8177500	6.8	367.95	0.4		3067250	3522650			
ABIRLA						INFY	0	0	14.9	927.9	[1.9]
NUVO	1944800	2063200	6.1	1808.2	3.8						

Nifty declined by 0.66% with Nifty future added 13.1 lakh shares in open interest and stock future shaded 456.2 Lakh shares in open interest.

- Nifty PCR decreased to 0.97 from 1.09
- Total Nifty Calls added 65.0 lakh shares in open interest.
- Total Nifty Puts shaded 23.0 lakh shares in open interest.
- Maximum open interest (Nifty) in Calls for June series is at 9700 and 9500 put.
- FII's bought net Rs. 292.11 Cr(provisional), while DIIs sold net Rs.148.54 Cr in cash market.
- FII bought net Rs.31.96 Cr in F&O
- Securities in Ban Period: DLF, FORTIS, GMRINFRA, IBREALEST, IFCI, INDIACEM, INFIBEAM, JPASSOCIAT, ORIENTBANK, RCOM, RELCAPITAL & UJJIVAN

Nifty Tracker

PARTICULARS	27/06/2017	23/06/2017	22/06/2017	21/06/2017
Spot	9511.4	9574.95	9630	9633
% Change in Spot	-0.66%	-0.57%	-0.03%	-0.21%
Nifty(FUT) June	9513	9590.05	9633.1	9655.25
Nifty(FUT) June Vol.	210316	116346	120638	76942
Nifty(FUT) June - OI	13268850	19477500	20367600	20995575
Nifty(FUT) July	9527.4	9609.15	9652.15	9671.4
Nifty(FUT) July Vol.	127561	37708	19277	6443
Nifty(FUT) July - OI	11666625	4297275	2493675	1966950

Trade Statistics for 27/06/2017

PARTICULARS	NO. OF CONTRACTS	TURNOVER (RS. CR.)	PUT CALL RATIO
NSE Index Futures	4,71,843	36540	-
NSE Stock Futures	14,77,898	1,00,124.67	-
NSE Index Options	80,90,959	6,50,735.35	-
NSE Stock Options	5,21,103	38722	0.53
NSE F&O Total Turnover	1,05,61,803	826,123	0.88
NSE Cash Turnover	-	24,855.88	-
BSE Cash Turnover	-	3601.66	-
Total Turnover	-	854580	-

FII Corner (F&O)

FII NET BUYING/SELLING & CHANGE IN OPEN INTEREST (Cr. Rupee)						
PARTICULARS	27/06/2017		23/06/2017		22/06/2017	
	Net Buying /Selling	Change In Open interest	Net Buying /Selling	Change In Open interest	Net Buying /Selling	Change In Open interest
Index Future	621	1899	898	654	89	-163
Index option	-599	1308	544	2545	594	539
Stock Future	-41	1942	-251	-275	-101	-699
Stock option	51	-258	-122	-96	45	-28
Total	32	4892	1069	2828	627	-351

Market Open Interest

ADDITION/REDUCTION IN MARKET OPEN INTEREST					
Contracts	27/06/2017	23/06/2017	22/06/2017	21/06/2017	20/06/2017
Index Futures	1116	779	129	-160	42
Index Options	-94	-720	-412	1517	1094
Stock Futures	9625	-19247	14978	9274	5121
Stock Options	-59	177	386	479	536
F&O Total	10588	-19011	15081.54	11110.57	6792.62

Nifty Option Open Interest Statistics

NIFTY OPTIONS HIGHEST ADDITION IN OPEN INTEREST						
Expiry	Strike	Option Type	Settlement Price	Volume	Open Interest	Change In OI
29-Jun-17	9600	CE	9.25	732636	7026225	1844625
29-Jun-17	9500	CE	40.75	345947	3379800	1751400
29-Jun-17	9550	CE	19.75	189073	1740825	1420350
27-Jul-17	8000	CE	1512.2	9783	1149375	616650
27-Jul-17	9400	PE	77	36536	3591375	546675
27-Jul-17	9500	CE	138.15	25877	965325	528225
27-Jul-17	9700	CE	50.3	58427	1990800	513675
27-Jul-17	9500	PE	108.95	40688	1719225	410400
27-Jul-17	9600	CE	87.95	57144	1606425	379500
27-Jul-17	11000	PE	1448.9	5030	671850	372825

NIFTY OPTIONS HIGHEST REDUCTION IN OPEN INTEREST						
Expiry	Strike	Option Type	Settlement Price	Volume	Open Interest	Change In OI
29-Jun-17	9600	PE	92.15	315920	2851425	-2058675
29-Jun-17	9650	PE	138.05	32536	297750	-811575
29-Jun-17	9500	PE	29.3	559746	5133450	-685950
29-Jun-17	9700	PE	186.15	55704	1404150	-684375
29-Jun-17	9550	PE	53.45	127634	742800	-395250
29-Jun-17	7500	CE	2012.4	5727	434550	-361350
29-Jun-17	9900	CE	0.75	64624	2871450	-352725
29-Jun-17	8000	CE	1507.95	5188	743875	-304500
29-Jun-17	9300	PE	2.95	140626	3199425	-290100
29-Jun-17	10500	PE	983.85	3755	375150	-224850

Stock Option Open Interest Statistics

STOCK OPTIONS WITH HIGHEST ADDITION IN OPEN INTEREST							
Symbol	Expiry	Strike	Option Type	Settl. Price	Volume	Open Interest	Change in OI
JPASSOCIAT	29-Jun-17	22.5	CE	0.2	1254	11560000	4556000
JPASSOCIAT	29-Jun-17	25	CE	0.05	179	3876000	2312000
SBIN	29-Jun-17	285	CE	1.1	4553	2691000	2022000
SUZLON	27-Jul-17	20	CE	0.4	116	7530000	1770000
SBIN	29-Jun-17	290	CE	0.5	6897	4863000	1563000
SUZLON	27-Jul-17	17.5	PE	0.6	51	2520000	1020000
SBIN	29-Jun-17	280	CE	2.8	2532	1683000	927000
SBIN	27-Jul-17	300	CE	2.5	716	2136000	912000
PNB	29-Jun-17	140	CE	1.1	1730	1218000	906500
ADANIENT	29-Jun-17	135	CE	1.7	846	2840000	864000

STOCK OPTIONS WITH HIGHEST REDUCTION IN OPEN INTEREST							
Symbol	Expiry	Strike	Option Type	Settl. Price	Volume	Open Int.	Change in OI
JPASSOCIAT	29-Jun-17	17.5	CE	3.65	272	9656000	-11016000
JPASSOCIAT	29-Jun-17	20	CE	1.35	496	14076000	-9044000
JPASSOCIAT	29-Jun-17	17.5	PE	0.05	266	5712000	-5916000
GMRINFRA	29-Jun-17	20	CE	0.3	204	10800000	-3240000
GMRINFRA	29-Jun-17	20	PE	0.9	193	8010000	-2655000
SUZLON	29-Jun-17	20	CE	0.05	216	29280000	-2580000
GMRINFRA	29-Jun-17	22.5	CE	0.1	162	24165000	-2295000
SUZLON	29-Jun-17	20	PE	1.9	66	9360000	-1530000
FEDERALBNK	29-Jun-17	110	PE	0.55	1091	2596000	-1287000
GMRINFRA	29-Jun-17	17.5	PE	0.05	142	10755000	-1170000

Research Team

Name	Designation	Email ID	Contact No.
Paras Bothra	President Equity Research	paras@ashikagroup.com	+91 22 6611 1704
Krishna Kumar Agarwal	Equity Research Analyst	krishna.a@ashikagroup.com	+91 33 4036 0646
Partha Mazumder	Equity Research Analyst	partha.m@ashikagroup.com	+91 33 4036 0647
Arijit Malakar	Equity Research Analyst	amalakar@ashikagroup.com	+91 33 4036 0644
Kapil Jagasia, CFA	Equity Research Analyst	kapil.j@ashikagroup.com	+91 22 6611 1715
Tirthankar Das	Technical & Derivative Analyst	tirthankar.d@ashikagroup.com	+91 33 4036 0645

Ashika Stock Broking Limited ("ASBL") or Research Entity has started its journey in the year 1994 and is engaged in the business of broking services, depository services, distributor of financial products (Mutual fund, IPO & Bonds). This research report has been prepared and distributed by ASBL in the sole capacity of a Research Analyst (Reg No. INH000000206) of SEBI (Research Analyst) Regulations 2014. ASBL is a wholly owned subsidiary of Ashika Global Securities (P) Ltd., a RBI registered non-deposit taking NBFC Company. Ashika group (details is enumerated on our website www.ashikagroup.com) is an integrated financial service provider inter alia engaged in the business of Investment Banking, Corporate Lending, Commodity Broking, Debt Syndication & Other Advisory Services.

There were no significant and material disciplinary actions against ASBL taken by any regulatory authority during last three years.

Disclosure

ASBL or its associates, its Research Analysts (including their relatives) may have financial interest in the subject company(ies). However, the said financial interest is not limited to having an open stock market position in /acting as advisor to /having a loan transaction with the subject company(ies) apart from registration as clients.

- ASBL or its Research Analysts (including their relatives) do not have any actual / beneficial ownership of 1% or more of securities of the subject company(ies) at the end of the month immediately preceding the date of publication of this report or date of the public appearance. However ASBL's associates may have actual / beneficial ownership of 1% or more of securities of the subject company(ies).
- ASBL or their Research Analysts (including their relatives) do not have any other material conflict of interest at the time of publication of this research report or date of the public appearance. However ASBL's associates might have an actual / potential conflict of interest (other than ownership).
- ASBL or its associates may have received compensation for investment banking, merchant banking, and brokerage services and for other products and services from the subject companies during the preceding 12 months. However, ASBL or its associates or its Research analysts (forming part of Research Desk) have not received any compensation or other benefits from the subject companies or third parties in connection with the research report. Moreover, Research Analysts have not received any compensation from the companies mentioned herein in the past twelve months.
- ASBL or their Research Analysts have not managed or co-managed public offering of securities for the subject company(ies) in the past twelve months. However ASBL's associates may have managed or co-managed public offering of securities for the subject company(ies) in the past twelve months.
- Research Analysts have not served as an officer, director or employee of the companies mentioned in the report.
- Neither ASBL nor its Research Analysts have been engaged in market making activity for the companies mentioned in the report.

Disclaimer

The research recommendation and information herein are solely for the personal information of the authorized recipient and does not construe to be an offer documents or any investment, legal or taxation advice or solicitation of any action based upon it. This report is not for public distribution or use by any person or entity, where such distribution, publication, availability or use would be contrary to law, regulation or subject to any registration or licensing requirement. We will not treat recipients as customer by virtue of their receiving this report. The report is based upon the information obtained from public sources that we consider reliable, but we do not guarantee its accuracy or completeness. ASBL shall not be in anyways responsible for any loss or damage that may arise to any such person from any inadvertent error in the information contained in this report. The recipients of this report should rely on their own investigations.