

Technical Report

Closing Brief

Benchmark Indices started yesterday's session on a weak note with Nifty opening around 9560 levels but buying in select Index heavy weights lifted the markets higher and Nifty clocked a fresh all time high of 9637.75

Technical Build up

- ❖ Bullish candle with decrease in volume
- ❖ Buy crossover in oscillators.
- ❖ Upper band of Bollinger exist at 9600
- ❖ Crucial moving average of 20/50 SMA are at 9418 and 9273
- ❖ 200 SMA trend deciding level exist at 8722

Outlook for the day

Indian Equity market settled almost unchanged in a volatile trading session, indicates a pause after the recent up move. There was a stock specific action in the market on account of quarterly results sessions going on. On the sectoral index chart, FMCG jumped the most by surging 1.55%, followed by auto and consumer durables. On the technical front, Nifty formed a Bullish candle on the daily chart and has been making higher highs - higher lows from last three sessions. the faster retracement of last falling segment signals resumption of upward momentum and opens upsides towards 9750 in the short term. However also few key Fibonacci ratios are coinciding around 9620 – 9650, so advise might take some money off the table. Immediate resistance placed around 9650 levels followed by 9700 levels while support is pegged around 9520-9530 levels. On the option front maximum Put OI is at 9400 followed by 9500 strike while maximum Call OI is at 9700 followed by 9800 and 9600 strike.

Technical & Derivative Report

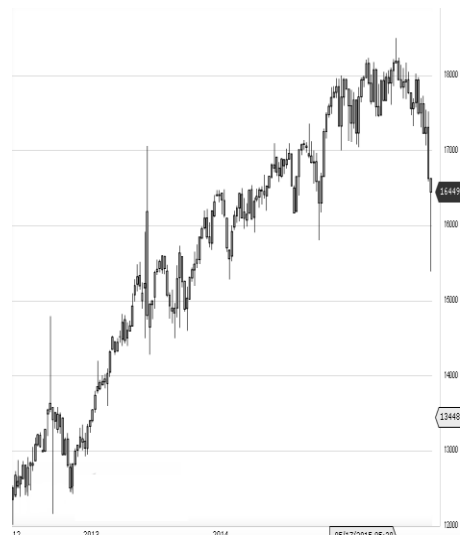
World Indices	LTP	Daily Ch(Pts)	Daily Ch(%)
Dow Jones	21080	-2	-0.01
Nasdaq	6210	4	0.08
S&P 500	2415	-	0.03
FTSE 100	7547	29	0.40
DAX	12628	26	0.21
Hang Seng	25701	62	0.24
Nikkei	19599	-83	-0.42
Sensex	31109	81	0.26
Nifty	9604	9	0.10

Commodity /Forex	LTP	Daily Ch(Pts)	Daily Ch(%)
Gold (\$/Oz)	1272.90	1.50	0.12
Silver (\$/Oz)	17.43	0.11	0.62
Copper(USD/lb.)	255.85	-0.75	-0.29
Brent Crude(USD/bbl)	52.19	-0.10	-0.19
USD/INR	64.49	0.05	0.08
USD/YEN	110.81	-0.46	-0.41
USD/EUR	1.1123	-0.0041	-0.37

Support/Resistance levels for Indian Equity Indices					
	S1	S2	CMP	R1	R2
Sensex	30930	30830	31109	31260	31425
Nifty	9550	9520	9604	9650	9700
Nifty (Fut)	9550	9520	9605	9650	9700

Pivot Level		
Sensex		31064
Nifty		9596

US: US market closed mixed on Friday ahead of the Memorial Day holiday weekend and digested key economic data.. Technically DJIA is presently trading at the 5th leg through Elliot wave count with negative divergence in oscillators.



Increase in OI with Increase in Price (Long Buildup)

Symbol	Prev OI	Curr OI	OI Chg (%)	Curr Pr.	Pr.Ch g (%)
NATION					
ALUM	2384000	4064000	70.5	68.85	0.2
PCJEWEL					
LLER	1108500	1549500	39.8	514	13.6
ESCORT					
S	1417900	1922800	35.6	676.85	4.8
TORNTP					
HARM	197600	250000	26.5	1222.35	0.9
TATACO					
MM	5880700	6437900	9.5	705.1	7.2

Increase in OI with Decrease in Price (Short Buildup)

Symbol	Prev OI	Curr OI	OI Chg (%)	Curr Pr.	Pr.Ch g (%)
SUNPHA	2752680	3648400			
RMA	0	0	32.5	503.25	[11.9]
	1146970	1495560			
TECHM	0	0	30.4	381	[11.7]
CGPOW	1978800	2570400			
ER	0	0	29.9	78.75	[16.1]
JUBLFO					
OD	1750500	2220000	26.8	933	[5.7]
	3227500	3974000			
DLF	0	0	23.1	176.3	[9.8]

Nifty gained by 0.10% with Nifty future added 16.3 lakh shares in open interest and stock future added 598.9 Lakh shares in open interest.

- Nifty PCR increased to 1.12 from 1.09
- Total Nifty Calls added 8.6 lakh shares in open interest.
- Total Nifty Puts added 25.7 lakh shares in open interest.
- Maximum open interest (Nifty) in Calls for May series is at 9700 and 9400 put.
- FII's sold net Rs.709.97 Cr(provisional), while DIIs bought net Rs.290.53 Cr in cash market.
- FII bought net Rs.1983.75Cr in F&O
- Securities in Ban Period: NIL

Nifty Tracker

PARTICULARS	29/05/2017	26/05/2017	25/05/2017	24/05/2017
Spot	9604.9	9595.1	9509.75	9360.55
% Change in Spot	0.10%	0.90%	1.59%	-0.27%
Nifty(FUT) June	9605.7	9575.8	9495.9	9373.15
Nifty(FUT) June Vol.	144402	122805	169833	136316
Nifty(FUT) June - OI	20496450	18961125	1203379.44	13931775
Nifty(FUT) July	9620.9	9589.95	9509.6	0
Nifty(FUT) July Vol.	4506	4501	6912	0
Nifty(FUT) July - OI	1018275	953775	940875	0

Trade Statistics for 29/05/2017

PARTICULARS	NO. OF CONTRACTS	TURNOVER (RS. CR.)	PUT CALL RATIO
NSE Index Futures	2,24,732	17728	-
NSE Stock Futures	7,49,392	49845	-
NSE Index Options	39,40,058	3,28,043.41	-
NSE Stock Options	4,41,970	30627	0.52
NSE F&O Total Turnover	53,56,152	426,243	0.87
NSE Cash Turnover	-	26,025.27	-
BSE Cash Turnover	-	3,827.43	-
Total Turnover	-	456096	-

FII Corner (F&O)

FII NET BUYING/SELLING & CHANGE IN OPEN INTEREST (Cr. Rupee)						
PARTICULARS	29/05/2017		26/05/2017		25/05/2017	
	Net Buying /Selling	Change In Open interest	Net Buying /Selling	Change In Open interest	Net Buying /Selling	Change In Open interest
Index Future	1208	1914	884	-893	371	-3764
Index option	1032	1256	2446	6218	2043	-30610
Stock Future	-299	65	-68	2474	128	-14952
Stock option	42	987	328	2559	227	-7854
Total	1983	4222	3590	10358	2769	-57179

Market Open Interest

ADDITION/REDUCTION IN MARKET OPEN INTEREST					
Contracts	29/05/2017	26/05/2017	25/05/2017	24/05/2017	23/05/2017
Index Futures	1500	-11312	4304	922	2002
Index Options	158	-21382	6702	-1587	2407
Stock Futures	11234	-60845	9588	2185	3005
Stock Options	1881	-16287	354	-355	-394
F&O Total	14774	-109826	20947.77	1164.44	7019.41

Nifty Option Open Interest Statistics

NIFTY OPTIONS HIGHEST ADDITION IN OPEN INTEREST						
Expiry	Strike	Option Type	Settlement Price	Volume	Open Interest	Change In OI
29-Jun-17	9500	PE	79.25	156878	3390600	1522275
29-Jun-17	9400	PE	53	135917	4597800	973650
29-Jun-17	9600	PE	117.6	66294	1954425	597150
29-Jun-17	9800	CE	22.7	118748	2888625	544800
29-Jun-17	9600	CE	90.7	202538	3908175	514275
29-Jun-17	9900	CE	9.7	52871	1326375	483750
29-Jun-17	9700	CE	48.5	168154	3433800	468525
29-Jun-17	9200	PE	23.15	94209	3461575	451200
29-Jun-17	10000	CE	4.4	40011	1551200	377925
29-Jun-17	8500	PE	3.5	10308	1092750	302850

NIFTY OPTIONS HIGHEST REDUCTION IN OPEN INTEREST						
Expiry	Strike	Option Type	Settlement Price	Volume	Open Interest	Change In OI
29-Jun-17	9400	CE	223.3	29124	1764000	-229200
29-Jun-17	9000	PE	11.05	46169	3323475	-198975
29-Jun-17	8900	PE	8.1	19019	874875	-160950
29-Jun-17	8800	PE	6.05	16759	1207925	-160350
27-Jul-17	8900	PE	18.35	4427	234975	-75675
27-Jul-17	9000	PE	24.5	6573	538050	-74775
29-Jun-17	9000	CE	579.5	2229	1315425	-62025
29-Jun-17	8600	PE	4.05	6664	474450	-54375
29-Jun-17	9200	CE	390.9	3534	643575	-54150
29-Jun-17	8000	PE	1.55	2952	952625	-46050

Stock Option Open Interest Statistics

STOCK OPTIONS WITH HIGHEST ADDITION IN OPEN INTEREST							
Symbol	Expiry	Strike	Option Type	Settl. Price	Volume	Open Interest	Change in OI
RCOM	29-Jun-17	25	CE	0.55	3196	9648000	7572000
JPASSOCIAT	29-Jun-17	7.5	PE	0.1	135	8364000	5644000
RCOM	29-Jun-17	22.5	CE	1.1	1934	3864000	3864000
ADANIPOWER	29-Jun-17	30	CE	0.55	454	5580000	3220000
RCOM	29-Jun-17	15	PE	0.45	898	2988000	2988000
SOUTHBANK	29-Jun-17	30	CE	0.35	335	5965380	2850126
RCOM	29-Jun-17	12.5	PE	0.2	389	2736000	2736000
JPASSOCIAT	29-Jun-17	20	CE	0.05	45	8432000	2720000
RCOM	29-Jun-17	17.5	PE	0.95	1446	2796000	2580000
GMRINFRA	29-Jun-17	12.5	PE	0.25	108	4545000	2385000

STOCK OPTIONS WITH HIGHEST REDUCTION IN OPEN INTEREST							
Symbol	Expiry	Strike	Option Type	Settl. Price	Volume	Open Int.	Change in OI
ASHOKLEY	29-Jun-17	85	CE	8.05	287	840000	-602000
ASHOKLEY	29-Jun-17	87.5	CE	6.45	237	385000	-525000
VEDL	29-Jun-17	220	PE	3.1	864	693000	-276500
JINDALSTEL	29-Jun-17	110	CE	17.1	129	360000	-229500
ASHOKLEY	29-Jun-17	75	PE	0.15	183	721000	-168000
CGPOWER	29-Jun-17	92.5	CE	6	37	324000	-168000
TATASTEEL	29-Jun-17	490	CE	31	476	376000	-166000
SINTEX	29-Jun-17	25	CE	6.7	171	484500	-163875
SAIL	29-Jun-17	57.5	CE	3.85	78	792000	-156000
ASHOKLEY	29-Jun-17	90	CE	4.65	2167	2849000	-140000

Research Team

Name	Designation	Email ID	Contact No.
Paras Bothra	President Equity Research	paras@ashikagroup.com	+91 22 6611 1704
Krishna Kumar Agarwal	Equity Research Analyst	krishna.a@ashikagroup.com	+91 33 4036 0646
Partha Mazumder	Equity Research Analyst	partha.m@ashikagroup.com	+91 33 4036 0647
Arijit Malakar	Equity Research Analyst	amalakar@ashikagroup.com	+91 33 4036 0644
Kapil Jagasia, CFA	Equity Research Analyst	kapil.j@ashikagroup.com	+91 22 6611 1715
Tirthankar Das	Technical & Derivative Analyst	tirthankar.d@ashikagroup.com	+91 33 4036 0645

Ashika Stock Broking Limited ("ASBL") or Research Entity has started its journey in the year 1994 and is engaged in the business of broking services, depository services, distributor of financial products (Mutual fund, IPO & Bonds). This research report has been prepared and distributed by ASBL in the sole capacity of a Research Analyst (Reg No. INH000000206) of SEBI (Research Analyst) Regulations 2014. ASBL is a wholly owned subsidiary of Ashika Global Securities (P) Ltd., a RBI registered non-deposit taking NBFC Company. Ashika group (details is enumerated on our website www.ashikagroup.com) is an integrated financial service provider inter alia engaged in the business of Investment Banking, Corporate Lending, Commodity Broking, Debt Syndication & Other Advisory Services.

There were no significant and material disciplinary actions against ASBL taken by any regulatory authority during last three years.

Disclosure

ASBL or its associates, its Research Analysts (including their relatives) may have financial interest in the subject company(ies). However, the said financial interest is not limited to having an open stock market position in /acting as advisor to /having a loan transaction with the subject company(ies) apart from registration as clients.

- ASBL or its Research Analysts (including their relatives) do not have any actual / beneficial ownership of 1% or more of securities of the subject company(ies) at the end of the month immediately preceding the date of publication of this report or date of the public appearance. However ASBL's associates may have actual / beneficial ownership of 1% or more of securities of the subject company(ies).
- ASBL or their Research Analysts (including their relatives) do not have any other material conflict of interest at the time of publication of this research report or date of the public appearance. However ASBL's associates might have an actual / potential conflict of interest (other than ownership).
- ASBL or its associates may have received compensation for investment banking, merchant banking, and brokerage services and for other products and services from the subject companies during the preceding 12 months. However, ASBL or its associates or its Research analysts (forming part of Research Desk) have not received any compensation or other benefits from the subject companies or third parties in connection with the research report. Moreover, Research Analysts have not received any compensation from the companies mentioned herein in the past twelve months.
- ASBL or their Research Analysts have not managed or co-managed public offering of securities for the subject company(ies) in the past twelve months. However ASBL's associates may have managed or co-managed public offering of securities for the subject company(ies) in the past twelve months.
- Research Analysts have not served as an officer, director or employee of the companies mentioned in the report.
- Neither ASBL nor its Research Analysts have been engaged in market making activity for the companies mentioned in the report.

Disclaimer

The research recommendation and information herein are solely for the personal information of the authorized recipient and does not construe to be an offer documents or any investment, legal or taxation advice or solicitation of any action based upon it. This report is not for public distribution or use by any person or entity, where such distribution, publication, availability or use would be contrary to law, regulation or subject to any registration or licensing requirement. We will not treat recipients as customer by virtue of their receiving this report. The report is based upon the information obtained from public sources that we consider reliable, but we do not guarantee its accuracy or completeness. ASBL shall not be in anyways responsible for any loss or damage that may arise to any such person from any inadvertent error in the information contained in this report. The recipients of this report should rely on their own investigations.