

# Technical Report

## Closing Brief

Nifty staged a gap up opening continuing its positive momentum as world markets favoured a bullish opening in early trade with US markets closing higher and Asian indices taking cues from the same. However index ended its three day winning streak to close at 10323.05 down 0.20%.

## Technical Build up

- ❖ Bullish candle with increase in volume
- ❖ Buy crossover in oscillators.
- ❖ Upper band of Bollinger exist at 10410
- ❖ Crucial moving average of 20/50 SMA are at 10051 and 9989
- ❖ 200 SMA trend deciding level exist at 9446

## Outlook for the day

Indian Equity market ended almost unchanged in a dull session, taking a breather after the recent up move. Encouraging earnings by bluechips like Maruti Suzuki and beginning of the November futures and options (F&O) series prodded participants to make fresh bets. On the technical front, chart structure clearly suggests that it has broken out above the rectangular consolidation around 9700-10200 and now looks well placed to surge higher in the uncharted territory and the recent price volume action in certain index heavyweight stocks add up to the overall positive setup on the markets. During the day index has support placed at 10300 and below that at 10250 while resistance comes in at 10370-10400 near term. On the option front Nifty Call options, the 10500-strike call has the highest open interest while on the put side; 10000-strike put has the highest open interest

## Technical & Derivative Report

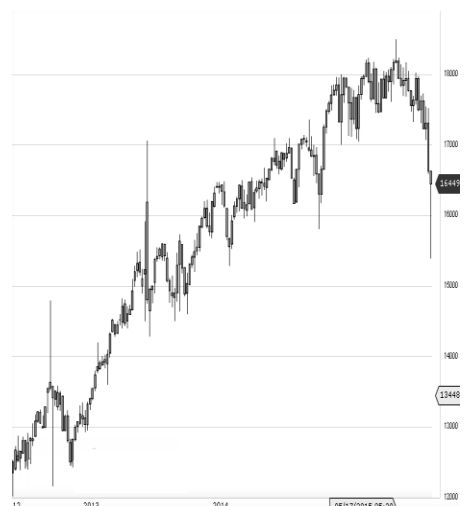
World Indices	LTP	Daily Ch(Pts)	Daily Ch(%)
Dow Jones	23434	33	0.14
Nasdaq	6701	144	2.20
S&P 500	2581	20	0.81
FTSE 100	7505	18	0.25
DAX	13217	84	0.64
Hang Seng	28380	-58	-0.21
Nikkei	21967	-41	-0.19
Sensex	33157	10	0.03
Nifty	10323	-20	-0.20

Commodity /Forex	LTP	Daily 1.1Ch(Pts)	Daily Ch(%)
Gold (\$/Oz)	1272.30	0.50	0.04
Silver (\$/Oz)	16.84	0.08	0.50
Copper(USD/lb.)	310.00	-0.35	-0.11
Brent			
Crude(USD/bbl)	60.56	0.12	0.20
USD/INR	65.05	0.22	0.35
USD/YEN	113.66	-0.01	-0.01
USD/EUR	1.1612	0.0004	0.03

Support/Resistance levels for Indian Equity Indices					
	S1	S2	CMP	R1	R2
Sensex	33080	32915	33157	33315	33480
Nifty	10300	10250	10323	10370	10420
Nifty (Fut)	10335	10285	10356	10410	10455

Pivot Level	
Sensex	33184
Nifty	10333

**US:** In the US Market tech-heavy Nasdaq composite rose to a record high on Friday as Wall Street cheered the blowout quarterly reports from three of the world's biggest tech companies. Technically DJIA is presently trading at the 5th leg through Elliot wave count with negative divergence in oscillators.



Increase in OI with Increase in Price (Long Buildup)					
Symbol	Prev OI	Curr OI	OI Chg (%)	Curr Pr.	Pr.Chg (%)
VGUAR					
D	1545000	2526000	63.5	216.25	3.3
JSWENE	6274700	8099650			
RGY	0	0	29.1	87.1	3.1
AJANTP					
HARM	953600	1213200	27.2	1204	2
PVR	488800	610000	24.8	1430	0.1
ADANIP					
ORTS	7097500	8727500	23	434.9	4.3

Increase in OI with Decrease in Price (Short Buildup)					
Symbol	Prev OI	Curr OI	OI Chg (%)	Curr Pr.	Pr.Chg (%)

Nifty declined by 0.20% with Nifty future added 6.5 lakh shares in open interest and stock future added 1160.3 Lakh shares in open interest.

- Nifty PCR decreased to 1.37 from 1.39
- Total Nifty Calls added 34.4 lakh shares in open interest.
- Total Nifty Puts added 37.2 lakh shares in open interest.
- Maximum open interest (Nifty) in Calls for Oct series is at 10500 and 10000 put.
- FII's sold net Rs.640.95 Cr(provisional), while DIIs bought net Rs.56.57 Cr in cash market.
- FII bought net Rs.870.95 Cr in F&O
- Securities in Ban Period: IBREALEST & JSWENERGY

## Nifty Tracker

PARTICULARS	27/10/2017	26/10/2017	25/10/2017	24/10/2017
Spot	10323.05	10343.8	10295.35	10207.7
% Change in Spot	-0.20%	0.47%	0.86%	0.22%
Nifty(FUT) Nov	10356.85	10360.55	10325.35	10255.15
Nifty(FUT) Nov Vol.	77006	202198	102086	86339
Nifty(FUT) Nov - OI	22954500	22355025	13136850	9160875
Nifty(FUT) Dec	10392.25	0	0	0
Nifty(FUT) Dec Vol.	2224	0	0	0
Nifty(FUT) Dec - OI	807300	0	0	0

## Trade Statistics for 27/10/2017

PARTICULARS	NO. OF CONTRACTS	TURNOVER (RS. CR.)	PUT CALL RATIO
NSE Index Futures	1,35,103	11737	-
NSE Stock Futures	9,05,351	64347	-
NSE Index Options	24,73,671	2,23,560.51	-
NSE Stock Options	5,69,173	41684	0.51
NSE F&O Total Turnover	40,83,298	341,329	0.85
NSE Cash Turnover	-	36,941.62	-
BSE Cash Turnover	-	5,595.40	-
Total Turnover	-	383866	-

## FII Corner (F&O)

FII NET BUYING/SELLING & CHANGE IN OPEN INTEREST (Cr. Rupee)						
PARTICULARS	27/10/2017		26/10/2017		25/10/2017	
	Net Buying /Selling	Change In Open interest	Net Buying /Selling	Change In Open interest	Net Buying /Selling	Change In Open interest
Index Future	-66	349	-515	-11957	-1098	3543
Index option	1155	3396	2064	-30489	83	1222
Stock Future	-224	1178	837	-6808	2009	2273
Stock option	6	3347	-39	-7904	56	615
Total	871	8270	2347	-57158	1050	7652

## Market Open Interest

ADDITION/REDUCTION IN MARKET OPEN INTEREST					
Contracts	27/10/2017	26/10/2017	25/10/2017	24/10/2017	23/10/2017
Index Futures	-10346	588	1885	1789	630
Index Options	-17575	4699	864	3157	3039
Stock Futures	-81024	20279	-607	5745	4628
Stock Options	-13635	319	-1800	969	818
F&O Total	-122580	25885	341.28	11659.47	9115.05

## Nifty Option Open Interest Statistics

NIFTY OPTIONS HIGHEST ADDITION IN OPEN INTEREST						
Expiry	Strike	Option Type	Settlement Price	Volume	Open Interest	Change In OI
30-Nov-17	10300	PE	113.55	102938	2923800	693825
30-Nov-17	10700	CE	17.2	69012	2505450	575850
30-Nov-17	11000	CE	2.6	28022	1539375	517500
30-Nov-17	10400	CE	111.1	96603	2978025	496050
30-Nov-17	9800	PE	21.55	26676	2206800	475125
30-Nov-17	10500	CE	66.4	101293	3167850	449325
30-Nov-17	10200	PE	82.25	87739	3470100	413700
30-Nov-17	10800	CE	7.7	26218	953925	315675
30-Nov-17	10600	CE	36.25	72818	2238150	258525
30-Nov-17	10000	PE	42.4	61811	4645125	240825

NIFTY OPTIONS HIGHEST REDUCTION IN OPEN INTEREST						
Expiry	Strike	Option Type	Settlement Price	Volume	Open Interest	Change In OI
30-Nov-17	10100	CE	310.55	5832	1206300	-111975
28-Dec-17	9700	PE	41.3	2864	475200	-71700
30-Nov-17	10200	CE	236.3	13193	1363500	-54825
30-Nov-17	9200	PE	4	3460	683550	-42225
30-Nov-17	9600	CE	754.55	429	340950	-23025
30-Nov-17	8300	CE	2031.45	309	1565325	-20175
30-Nov-17	11000	PE	632.5	1509	932700	-12600
28-Dec-17	9000	PE	12.3	1206	1978050	-12225
30-Nov-17	10000	CE	390.45	5385	1093650	-5550
30-Nov-17	8500	PE	0.95	2849	294825	-5100

## Stock Option Open Interest Statistics

STOCK OPTIONS WITH HIGHEST ADDITION IN OPEN INTEREST							
Symbol	Expiry	Strike	Option Type	Settl. Price	Volume	Open Interest	Change in OI
SUZLON	30-Nov-17	17.5	CE	0.4	856	21420000	7290000
JPASSOCIAT	30-Nov-17	20	CE	0.95	413	7888000	4216000
SAIL	30-Nov-17	90	CE	2.35	2126	4080000	4080000
JSWENERGY	30-Nov-17	50	PE	0.15	561	3629500	3629500
YESBANK	30-Nov-17	320	CE	9.8	6103	3202500	3094000
JPASSOCIAT	30-Nov-17	22.5	CE	0.45	239	3264000	2788000
SUZLON	30-Nov-17	20	CE	0.15	335	8220000	2730000
SAIL	30-Nov-17	85	CE	3.6	1743	2628000	2628000
ITC	30-Nov-17	300	CE	1.45	4006	3525600	2481600
SBIN	30-Nov-17	310	PE	15.9	2110	2721000	2463000

STOCK OPTIONS WITH HIGHEST REDUCTION IN OPEN INTEREST							
Symbol	Expiry	Strike	Option Type	Settl. Price	Volume	Open Int.	Change in OI
RECLTD	30-Nov-17	170	CE	8.95	500	1092000	-516000
SAIL	30-Nov-17	75	CE	8.1	212	1044000	-252000
ONGC	30-Nov-17	170	CE	13	86	690000	-176250
YESBANK	30-Nov-17	330	PE	27.35	465	316750	-148750
SAIL	30-Nov-17	65	CE	13.1	27	840000	-120000
BHARTIARTL	30-Nov-17	500	PE	26.85	280	164900	-117300
PFC	30-Nov-17	140	CE	8.1	175	1254000	-114000
AXISBANK	30-Nov-17	460	CE	33.05	165	115200	-108000
RECLTD	30-Nov-17	165	CE	11.85	52	564000	-108000
TV18BRDCST	30-Nov-17	40	CE	4.15	25	595000	-102000

## Research Team

Name	Designation	Email ID	Contact No.
Paras Bothra	President Equity Research	paras@ashikagroup.com	+91 22 6611 1704
Krishna Kumar Agarwal	Equity Research Analyst	krishna.a@ashikagroup.com	+91 33 4036 0646
Partha Mazumder	Equity Research Analyst	partha.m@ashikagroup.com	+91 33 4036 0647
Arijit Malakar	Equity Research Analyst	amalakar@ashikagroup.com	+91 33 4036 0644
Kapil Jagasia	Equity Research Analyst	kapil.j@ashikagroup.com	+91 22 6611 1715
Tirthankar Das	Technical & Derivative Analyst	tirthankar.d@ashikagroup.com	+91 33 4036 0645

Ashika Stock Broking Limited ("ASBL") or Research Entity has started its journey in the year 1994 and is engaged in the business of broking services, depository services, distributor of financial products (Mutual fund, IPO & Bonds). This research report has been prepared and distributed by ASBL in the sole capacity of a Research Analyst (Reg No. INH00000206) of SEBI (Research Analyst) Regulations 2014. ASBL is a wholly owned subsidiary of Ashika Global Securities (P) Ltd., a RBI registered non-deposit taking NBFC Company. Ashika group (details is enumerated on our website [www.ashikagroup.com](http://www.ashikagroup.com)) is an integrated financial service provider inter alia engaged in the business of Investment Banking, Corporate Lending, Commodity Broking, Debt Syndication & Other Advisory Services.

There were no significant and material disciplinary actions against ASBL taken by any regulatory authority during last three years.

### Disclosure

ASBL or its associates, its Research Analysts (including their relatives) may have financial interest in the subject company(ies). However, the said financial interest is not limited to having an open stock market position in /acting as advisor to /having a loan transaction with the subject company(ies) apart from registration as clients.

- ASBL or its Research Analysts (including their relatives) do not have any actual / beneficial ownership of 1% or more of securities of the subject company(ies) at the end of the month immediately preceding the date of publication of this report or date of the public appearance. However ASBL's associates may have actual / beneficial ownership of 1% or more of securities of the subject company(ies).
- ASBL or their Research Analysts (including their relatives) do not have any other material conflict of interest at the time of publication of this research report or date of the public appearance. However ASBL's associates might have an actual / potential conflict of interest (other than ownership).
- ASBL or its associates may have received compensation for investment banking, merchant banking, and brokerage services and for other products and services from the subject companies during the preceding 12 months. However, ASBL or its associates or its Research analysts (forming part of Research Desk) have not received any compensation or other benefits from the subject companies or third parties in connection with the research report. Moreover, Research Analysts have not received any compensation from the companies mentioned herein in the past twelve months.
- ASBL or their Research Analysts have not managed or co-managed public offering of securities for the subject company(ies) in the past twelve months. However ASBL's associates may have managed or co-managed public offering of securities for the subject company(ies) in the past twelve months.
- Research Analysts have not served as an officer, director or employee of the companies mentioned in the report.
- Neither ASBL nor its Research Analysts have been engaged in market making activity for the companies mentioned in the report.

### Disclaimer

The research recommendation and information herein are solely for the personal information of the authorized recipient and does not construe to be an offer documents or any investment, legal or taxation advice or solicitation of any action based upon it. This report is not for public distribution or use by any person or entity, where such distribution, publication, availability or use would be contrary to law, regulation or subject to any registration or licensing requirement. We will not treat recipients as customer by virtue of their receiving this report. The report is based upon the information obtained from public sources that we consider reliable, but we do not guarantee its accuracy or completeness. ASBL shall not be in anyways responsible for any loss or damage that may arise to any such person from any inadvertent error in the information contained in this report. The recipients of this report should rely on their own investigations.