

SENSEX	28946.23 (+0.06%)
NIFTY	8934.55 (+0.08%)

Sector Indices	Close	% Change
NIFTY IT	10750	0.23
NIFTY 100	9194	0.04
NIFTY MIDCAP 50	4132	-0.25
NIFTY REALTY	198	-0.08
NIFTY INFRA	2987	0.25
NIFTY ENERGY	11351	-0.41
NIFTY FMCG	22342	-0.22
NIFTY PHARMA	10468	-0.29
NIFTY AUTO	9779	0.26
NIFTY METAL	3035	-0.59

Key Levels - Nifty	
Support	9050 / 9000
Resistance	9119 / 9200

FII & DII Activities (Fig. in Cr)		
Date	FII	DII
10-Mar-17	412.14	-13.91
09-Mar-17	487.61	10.98
08-Mar-17	3573.04	-1735.12
07-Mar-17	920.46	-1073.75
06-Mar-17	564.15	-481.96
03-Mar-17	1529.48	-737
02-Mar-17	122.94	-83.21
01-Mar-17	-198.27	254.21
28-Feb-17	1146.23	268.34
27-Feb-17	-145.55	263.79
23-Feb-17	392.33	-445.04

Key Levels - Bank Nifty	
Support	21040 / 20875
Resistance	21200 / 21400

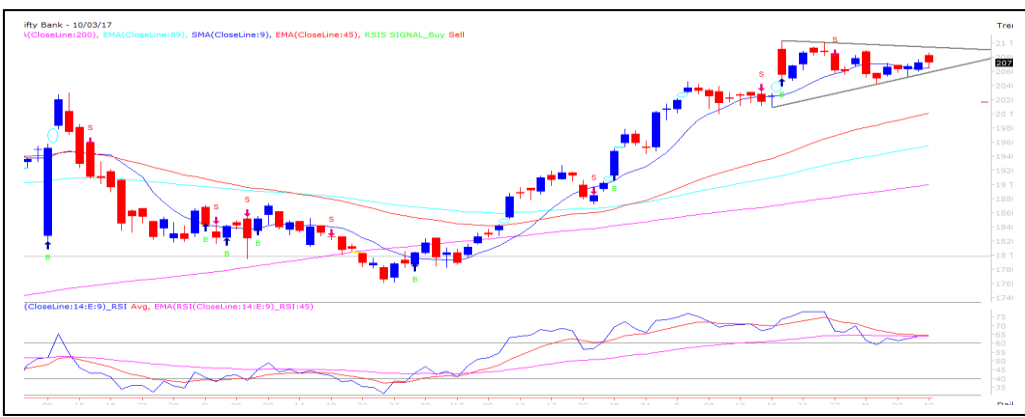
Nifty Spot Chart



Technical Outlook

On Friday, we witnessed bouts of volatility ahead of state assembly election outcome and both the counter parties have opted to avoid taking overnight risk which led to decent intraday volatility. Today, our market likely to opened with a massive gap on the back of thumping victory of BJP into UP assembly election. Hence, Nifty likely to surpassed its all-time high of 9119.20 and probably hit a record intraday high. However, we advised traders to use such opportunity to take some profit off the table and wait patiently before initiating any direction position. Any sustain move above 9119.20 will open the door for 9300 / 9325 zone.

Bank Nifty Spot Chart



Technical Outlook

On Friday, Nifty Bank index opened higher with a gap of 100 points however momentum immediately fizzled out as the day proceed and Bank Nifty eventually ended the session near its opening tick. Today, Bank Nifty likely to open higher with a significant gap and likely to surpass its recent all-time high of 21042.35 in that case index will extend its gain and rally till 21200 / 21400 which coincides with the daily PR target and monthly pivot high respectively.

Stock For Today

Name	Entry	Target	Stop loss
LT	Buy Above 1511	1546	1491
PNB	Buy Above 143.50	149	140.70
BHARTIARTL	Buy At cmp 364.90	379	356.25

Daily Pivot Levels for Nifty 50 Stocks

Scrip Name	Support 2	Support 1	Pivot	Resist 1	Resist 2
ACC	1384.6	1392.3	1403.7	1411.4	1422.7
ADANI PORTS	291.7	295.2	300.6	304.2	309.6
AMBUJACEM	225.7	227.4	228.7	230.4	231.7
ASIANPAINT	1017.4	1023.8	1030.5	1036.9	1043.6
AUROPHARMA	639.8	646.1	656.3	662.6	672.8
AXISBANK	509.3	512.6	516.3	519.6	523.3
BAJAJ-AUTO	2832.6	2848.6	2869.2	2885.2	2905.9
BANKBARODA	155.4	157.2	160.1	161.9	164.8
BHARTIARTL	357.2	361.1	363.8	367.6	370.3
BHEL	155.2	156.6	158.5	160.0	161.9
BOSCHLTD	21533.7	22147.4	22613.7	23227.4	23693.7
BPCL	610.0	616.7	626.8	633.5	643.7
CIPLA	584.8	586.9	589.2	591.4	593.7
COALINDIA	312.4	314.4	317.2	319.1	321.9
DRREDDY	2684.7	2700.3	2716.6	2732.2	2748.5
EICHERMOT	23013.5	23185.0	23372.5	23544.0	23731.5
GAIL	371.2	374.7	379.1	382.6	386.9
GRASIM	982.5	990.8	1003.3	1011.5	1024.0
HCLTECH	831.3	838.8	848.4	855.9	865.5
HDFC	1361.0	1367.4	1375.4	1381.8	1389.7
HDFCBANK	1385.6	1392.8	1400.4	1407.7	1415.3
HEROMOTOCO	3269.2	3290.1	3309.6	3330.5	3350.0
HINDALCO	184.3	186.0	188.7	190.3	193.0
HINDUNILVR	863.1	869.2	873.5	879.5	883.8
ICICIBANK	265.1	267.8	272.2	274.9	279.3
IDEA	101.5	102.9	104.9	106.3	108.3
INDUSINDBK	1315.7	1325.7	1333.4	1343.4	1351.1
INFRA TEL	302.4	305.4	309.1	312.2	315.9
INFY	1006.7	1014.3	1021.0	1028.5	1035.2
ITC	261.3	262.4	263.7	264.8	266.1
KOTAKBANK	818.6	823.7	831.3	836.5	844.1
LT	1472.3	1481.9	1489.7	1499.4	1507.2
LUPIN	1430.8	1439.0	1448.2	1456.3	1465.5
M&M	1286.7	1294.7	1307.4	1315.4	1328.0
MARUTI	5894.3	5925.0	5966.7	5997.3	6039.0
NTPC	154.6	155.9	157.7	158.9	160.7
ONGC	186.6	189.1	190.8	193.3	194.9
POWERGRID	187.1	189.8	192.8	195.5	198.4
RELIANCE	1244.8	1263.2	1279.6	1298.0	1314.4
SBIN	266.3	269.2	272.4	275.2	278.4
SUNPHARMA	673.6	678.3	684.7	689.4	695.8
TATAMOTORS	461.9	465.5	468.7	472.3	475.4
TATAMTRDVR	276.0	277.9	279.9	281.8	283.8
TATAPOWER	80.3	81.1	82.2	83.0	84.1
TATASTEEL	455.9	461.8	468.1	474.0	480.3
TCS	2499.7	2521.0	2535.3	2556.6	2570.9
TECHM	459.7	467.8	482.5	490.6	505.3
ULTRACEMCO	3794.2	3823.3	3856.2	3885.3	3918.2
WIPRO	481.2	484.1	486.5	489.5	491.9
YESBANK	1457.6	1469.5	1477.0	1488.8	1496.3
ZEEL	505.0	509.9	516.1	521.0	527.2

TEAM

ANALYST	DESIGNATION	EMAIL	TELEPHONE
Aditya Agarwal	Head – Technical Research	aditya@way2wealth.com	+91 22-61462955
Harish Jujarey	Sr. Technical Analyst – Commodity	harishjujarey@way2wealth.com	+91 22-61462952
Mohit Agarwal	Technical Analyst – Forex & Commodity	mohitk@way2wealth.com	+91 22-61462954
Monil Shah, CMT	Technical Analyst – Equity & Forex	monilshah@way2wealth.com	+91 22-61462980

Disclaimer

Analyst Certification: I, Monil Shah, CMT the research analyst and author of this report, hereby certify that the views expressed in this research report accurately reflect our personal views about the subject securities, issuers, products, sectors or industries. It is also certified that no part of the compensation of the analyst(s) was, is, or will be directly or indirectly related to the inclusion of specific recommendations or views in this research. The analyst(s), principally responsible for the preparation of this research report, receives compensation based on overall revenues of the company (Way2Wealth Brokers Private Limited, hereinafter referred to as Way2Wealth) and has taken reasonable care to achieve and maintain independence and objectivity in making any recommendations.

It is confirmed that Monil Shah, CMT the author of this report has not received any compensation from the companies mentioned in the report in the preceding 12 months. Our research professionals are paid in part based on the profitability of Way2Wealth, which include earnings from other business. Neither Way2Wealth nor its directors, employees, agents or representatives shall be liable for any damages whether direct or indirect, incidental, special or consequential including lost revenue or lost profits that may arise from or in connection with the use of the information contained in this report.

This report is for the personal information of the authorized recipient and does not construe to be any investment, legal or taxation advice to you. Way2Wealth is not soliciting any action based upon it. Nothing in this research shall be construed as a solicitation to buy or sell any security or product, or to engage in or refrain from engaging in any such transaction. The contents of this material are general and are neither comprehensive nor appropriate for every individual and are solely for the informational purposes of the readers. This material does not take into account the specific objectives, financial situation or needs of an individual/s or a Corporate/s or any entity/s.

This research has been prepared for the general use of the clients of the Way2Wealth and must not be copied, either in whole or in part, or distributed or redistributed to any other person in any form. If you are not the intended recipient you must not use or disclose the information in this research in any way. Though disseminated to all the customers simultaneously, not all customers may receive this report at the same time. Way2Wealth will not treat recipients as customers by virtue of their receiving this report. The distribution of this document in other jurisdictions may be restricted by the law applicable in the relevant jurisdictions and persons into whose possession this document comes should inform themselves about, and observe any such restrictions.

The report is based upon information obtained from sources believed to be reliable, but we do not make any representation or warranty that it is accurate, complete or up to date and it should not be relied upon as such. Way2Wealth or any of its affiliates or employees makes no warranties, either express or implied of any kind regarding any matter pertaining to this report, including, but not limited to warranties of suitability, fitness for a particular purpose, accuracy, timeliness, completeness or non-infringement. We accept no obligation to correct or update the information or opinions in it. Way2Wealth or any of its affiliates or employees shall not be in any way responsible for any loss or damage that may arise to any person from any inadvertent error in the information contained in this report. The recipients of this report should rely on their own investigations. In no event shall Way2Wealth be liable for any damages of any kind, including, but not limited to, indirect, special, incidental, consequential, punitive, lost profits, or lost opportunity, whether or not Way2Wealth has advised of the possibility of such damages.

This material contains statements that are forward-looking; such statements are based upon the current beliefs and expectations and are subject to significant risks and uncertainties. Actual results may differ from those set forth in the forward-looking statements. These uncertainties include but are not limited to: the risk of adverse movements or volatility in the securities markets or in interest or foreign exchange rates or indices; adverse impact from an economic slowdown; downturn in domestic or foreign securities and trading conditions or markets; increased competition; unfavorable political and diplomatic developments; change in the governmental or regulatory policies; failure of a corporate event and such others. This is not an offer to buy or sell or a solicitation of an offer to buy or sell any security or instrument or to participate in any particular trading strategy. No part of this material may be copied or duplicated in any form by any means or redistributed without the written consent of Way2Wealth. In no event shall any reader publish, retransmit, redistribute or otherwise reproduce any information provided by Way2Wealth in any format to anyone. Way2Wealth and its affiliates, officers, directors and employees including persons involved in the preparation or issuance of this report may from time to time have interest in securities / positions, financial or otherwise in the securities related to the information contained in this report.