

Technical Report

Closing Brief

Benchmark indices in yesterday's session ended lower tracking the global trends which were mostly mixed as investors pondered over the chances of another rise in interest rates next month ahead of US Federal Reserve's policy outcome. Nifty finally ended at 9311.95 levels down by a meagre 1.85 or -0.02%.

Technical Build up

- ❖ Bearish candle with marginal increase in volume
- ❖ Buy crossover in oscillators.
- ❖ Upper band of Bollinger exist at 9346
- ❖ Crucial moving average of 20/50 SMA are at 9175 and 9036
- ❖ 200 SMA trend deciding level exist at 8620

Outlook for the day

Indian Equity market ended almost unchanged in a dull session yesterday. Cautiousness ahead of US Fed meeting outcome combined with the global rating agency, Fitch's, unchanged stance on India rating capped the upside in Nifty. Healthcare and oil & gas counters witnessed downward pressure, while buying in realty and IT stocks propped up the market. On the technical front, formed an inside bar on the Daily chart as it traded inside the trading range. Present consolidation in price action is testing traders patience hence on should wait for a clear trend to emerge. Breach of multiple hurdle at 9350-9380 would start the next leg up. Immediate support is placed around 9250 levels and the next support is placed around 9200 levels. On the higher side the immediate resistance is placed around 9350 levels and the next resistance is placed around 9400 levels. On the option front maximum Put OI is at 9000 followed by 9300 and 9200 strike while max Call OI is at 9500 followed by 9400 strikes.



Technical & Derivative Report

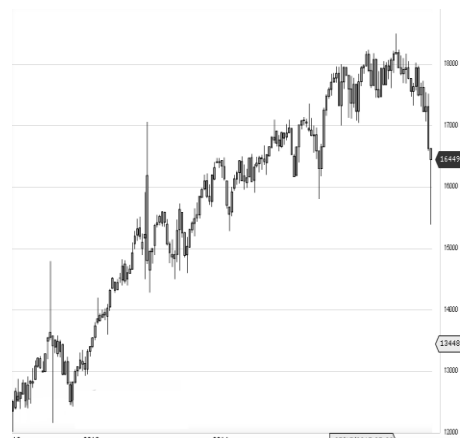
World Indices	LTP	Daily Ch(Pts)	Daily Ch(%)
Dow Jones	20957	8	0.04
Nasdaq	6072	-22	-0.37
S&P 500	2388	-3	-0.13
FTSE 100	7234	-15	-0.21
DAX	12527	19	0.16
Hang Seng	24586	-109	-0.44
Nikkei	19445	135	0.70
Sensex	29894	-26	-0.09
Nifty	9311	-1	-0.02

Commodity /Forex	LTP	Daily Ch(Pts)	Daily Ch(%)
Gold (\$/Oz)	1241.20	-7.30	-0.58
Silver (\$/Oz)	16.54	-0.01	-0.07
Copper(USD/lb.)	253.95	-0.40	-0.16
Brent Crude(USD/bbl)	50.64	-0.15	-0.30
USD/INR	64.14	-0.06	-0.10
USD/YEN	112.81	0.06	0.05
USD/EUR	1.0892	0.0006	0.06

Support/Resistance levels for Indian Equity Indices					
	S1	S2	CMP	R1	R2
Sensex	29690	29520	29894	30025	30125
Nifty	9250	9200	9311	9350	9380
Nifty (Fut)	9280	9230	9340	9380	9410

Pivot Level					
	S1	S2	CMP	R1	R2
Sensex					
Nifty				9318	

US: US market closed marginally higher with McDonald's contributing the most gains, while the S&P 500 fell 0.14 percent. Bank stocks rose broadly on Wednesday as expectations for a June rate hike from the Federal Reserve increased. Technically DJIA is presently trading at the 5th leg through Elliot wave count with negative divergence in oscillators.



Increase in OI with Increase in Price (Long Buildup)						Increase in OI with Decrease in Price (Short Buildup)					
Symbol	Prev OI	Curr OI	OI Chg (%)	Curr Pr.	Pr.Chg (%)	Symbol	Prev OI	Curr OI	OI Chg (%)	Curr Pr.	Pr.Chg (%)
RAYMO						BALRAM					
ND	506	1078	113	792.15	8.4	CHIN	691	1295	87.4	159.2	[3.0]
GSFC	733	1122	53.1	135	5.8	MCX	912	1475	61.7	1159.8	[2.7]
GODFRY						MGL	277	356	28.5	1006.8	[1.4]
PHLP	338	451	33.4	1248.25	1.5	EXIDEIN					
NBCC	805	990	23	202.25	2.4	D	3937	4728	20.1	222.6	[3.8]
UBL	1143	1352	18.3	782.8	0.8	BIOCON	5176	6173	19.3	1041	[4.7]

Nifty declined by 0.02% with Nifty future added 2.9 lakh shares in open interest and stock future shaded 572.9 Lakh shares in open interest.

- Nifty PCR increased to 1.12 from 1.11
- Total Nifty Calls added 15.2 lakh shares in open interest.
- Total Nifty Puts added 24.5 lakh shares in open interest.
- Maximum open interest (Nifty) in Calls for Jan series is at 9500 and 9000 put.
- FII's sold net Rs.517.74Cr(provisional), while DIIs bought net Rs.112.36 Cr in cash market.
- FII bought net Rs.856.67 Cr in F&O
- Securities in Ban Period: ADANIENT, BHARATFIN, JSWENERGY & UJJIVAN

Nifty Tracker

PARTICULARS	03/05/2017	02/05/2017	28/04/2017	27/04/2017
Spot	9311.95	9313.8	9304.05	9342.15
% Change in Spot	-0.02%	0.10%	-0.41%	-0.10%
Nifty(FUT) May	9340.25	9339.3	9333.7	9356.65
Nifty(FUT) May Vol.	69777	114045	98148	147774
Nifty(FUT) May - OI	19515750	19290975	19293300	19779450
Nifty(FUT) June	9336.65	9335.9	9330.9	0
Nifty(FUT) June Vol.	1926	2853	2288	0
Nifty(FUT) June - OI	1231200	1195500	1168500	0

Trade Statistics for 03/05/2017

PARTICULARS	NO. OF CONTRACTS	TURNOVER (RS. CR.)	PUT CALL RATIO
NSE Index Futures	1,26,045	9841	-
NSE Stock Futures	6,74,482	50016	-
NSE Index Options	32,87,620	2,78,285.42	-
NSE Stock Options	3,84,605	28991	0.45
NSE F&O Total Turnover	44,72,752	367,133	0.93
NSE Cash Turnover	-	25,272.97	-
BSE Cash Turnover	-	4,235.86	-
Total Turnover	-	396641	-

FII Corner (F&O)

FII NET BUYING/SELLING & CHANGE IN OPEN INTEREST (Cr. Rupee)						
PARTICULARS	03/05/2017		02/05/2017		28/04/2017	
	Net Buying /Selling	Change In Open interest	Net Buying /Selling	Change In Open interest	Net Buying /Selling	Change In Open interest
Index Future	63	102	-714	-606	-682	-404
Index option	1118	1582	793	931	2427	4802
Stock Future	-436	809	-176	805	-534	2359
Stock option	112	725	145	580	88	1611
Total	857	3217	48	1710	1299	8368

Market Open Interest

ADDITION/REDUCTION IN MARKET OPEN INTEREST					
Contracts	03/05/2017	02/05/2017	28/04/2017	27/04/2017	26/04/2017
Index Futures	-85	-176	-12252	118	3408
Index Options	856	1482	-26579	3964	1525
Stock Futures	7169	10820	-72053	23377	4100
Stock Options	1867	2318	-13995	345	-1136
F&O Total	9807	14444	-124878.36	27803.91	7897.17

Nifty Option Open Interest Statistics

NIFTY OPTIONS HIGHEST ADDITION IN OPEN INTEREST						
Expiry	Strike	Option Type	Settlement Price	Volume	Open Interest	Change In OI
25-May-17	9300	PE	79.95	103193	4620075	638475
25-May-17	9400	CE	61.1	89436	4297725	483675
25-May-17	9200	PE	49.9	69979	4465725	290475
25-May-17	9500	CE	26.95	71045	4998225	222825
25-May-17	8900	PE	13.1	28267	2530425	176175
25-May-17	9000	PE	20.25	48377	4783350	161850
25-May-17	9100	PE	31.6	57063	4383225	157575
25-May-17	9300	CE	115.05	52844	2957850	123825
25-May-17	9400	PE	123.9	33913	1521225	114450
29-Jun-17	8600	PE	15.45	2544	373500	109125

NIFTY OPTIONS HIGHEST REDUCTION IN OPEN INTEREST						
Expiry	Strike	Option Type	Settlement Price	Volume	Open Interest	Change In OI
25-May-17	9500	PE	186.2	5172	948600	-35775
25-May-17	9700	CE	3.4	18818	1475775	-29475
25-May-17	8500	CE	834.2	378	1323600	-20100
25-May-17	10000	PE	652.2	680	707550	-11850
25-May-17	8100	PE	1.5	407	66150	-9750
25-May-17	7500	CE	1822.5	419	1097400	-8325
25-May-17	9600	PE	267.8	1506	431550	-7725
25-May-17	10100	CE	0.5	2558	25800	-6525
28-Dec-17	8000	PE	47.55	322	1322875	-3750
25-May-17	8700	PE	5.85	12901	1522050	-3600

Stock Option Open Interest Statistics

STOCK OPTIONS WITH HIGHEST ADDITION IN OPEN INTEREST							
Symbol	Expiry	Strike	Option Type	Settl. Price	Volume	Open Interest	Change in OI
ICICIBANK	25-May-17	280	CE	6.75	4450	6727500	3215000
ICICIBANK	25-May-17	300	CE	2.05	3546	5872500	2840000
IFCI	25-May-17	32.5	CE	1.6	470	7524000	2002000
JPASSOCIAT	25-May-17	15	CE	0.3	54	15164000	1700000
SUZLON	25-May-17	25	CE	0.2	234	14220000	1680000
SAIL	25-May-17	65	CE	1.2	1391	4680000	1620000
ICICIBANK	25-May-17	270	PE	6.9	2900	4160000	1422500
ICICIBANK	25-May-17	290	CE	3.7	3070	4452500	1412500
SAIL	25-May-17	70	CE	0.4	488	2976000	1344000
ADANIPOWER	25-May-17	32.5	CE	0.95	209	2300000	1320000

STOCK OPTIONS WITH HIGHEST REDUCTION IN OPEN INTEREST							
Symbol	Expiry	Strike	Option Type	Settl. Price	Volume	Open Int.	Change in OI
IFCI	25-May-17	35	CE	0.75	668	9548000	-418000
IDFC	25-May-17	70	CE	0.4	150	2613600	-396000
SBIN	25-May-17	320	CE	1.2	1626	1515000	-378000
BEL	25-May-17	190	PE	13.4	128	202500	-315000
JSWENERGY	25-May-17	65	CE	1.85	96	1296000	-312000
JSWENERGY	25-May-17	60	PE	0.9	73	1336000	-264000
KTKBANK	25-May-17	160	CE	13.05	73	1054625	-243375
BEL	25-May-17	200	CE	1.5	170	1917000	-243000
IDBI	25-May-17	80	CE	3.05	1116	2128000	-240000
JSWENERGY	25-May-17	70	CE	0.95	62	2328000	-232000

Research Team

Name	Designation	Email ID	Contact No.
Paras Bothra	President Equity Research	paras@ashikagroup.com	+91 22 6611 1704
Krishna Kumar Agarwal	Equity Research Analyst	krishna.a@ashikagroup.com	+91 33 4036 0646
Partha Mazumder	Equity Research Analyst	partha.m@ashikagroup.com	+91 33 4036 0647
Arijit Malakar	Equity Research Analyst	amalakar@ashikagroup.com	+91 33 4036 0644
Kapil Jagasia, CFA	Equity Research Analyst	kapil.j@ashikagroup.com	+91 22 6611 1715
Tirthankar Das	Technical & Derivative Analyst	tirthankar.d@ashikagroup.com	+91 33 4036 0645

Ashika Stock Broking Limited ("ASBL") or Research Entity has started its journey in the year 1994 and is engaged in the business of broking services, depository services, distributor of financial products (Mutual fund, IPO & Bonds). This research report has been prepared and distributed by ASBL in the sole capacity of a Research Analyst (Reg No. INH000000206) of SEBI (Research Analyst) Regulations 2014. ASBL is a wholly owned subsidiary of Ashika Global Securities (P) Ltd., a RBI registered non-deposit taking NBFC Company. Ashika group (details is enumerated on our website www.ashikagroup.com) is an integrated financial service provider inter alia engaged in the business of Investment Banking, Corporate Lending, Commodity Broking, Debt Syndication & Other Advisory Services.

There were no significant and material disciplinary actions against ASBL taken by any regulatory authority during last three years.

Disclosure

ASBL or its associates, its Research Analysts (including their relatives) may have financial interest in the subject company(ies). However, the said financial interest is not limited to having an open stock market position in /acting as advisor to /having a loan transaction with the subject company(ies) apart from registration as clients.

- ASBL or its Research Analysts (including their relatives) do not have any actual / beneficial ownership of 1% or more of securities of the subject company(ies) at the end of the month immediately preceding the date of publication of this report or date of the public appearance. However ASBL's associates may have actual / beneficial ownership of 1% or more of securities of the subject company(ies).
- ASBL or their Research Analysts (including their relatives) do not have any other material conflict of interest at the time of publication of this research report or date of the public appearance. However ASBL's associates might have an actual / potential conflict of interest (other than ownership).
- ASBL or its associates may have received compensation for investment banking, merchant banking, and brokerage services and for other products and services from the subject companies during the preceding 12 months. However, ASBL or its associates or its Research analysts (forming part of Research Desk) have not received any compensation or other benefits from the subject companies or third parties in connection with the research report. Moreover, Research Analysts have not received any compensation from the companies mentioned herein in the past twelve months.
- ASBL or their Research Analysts have not managed or co-managed public offering of securities for the subject company(ies) in the past twelve months. However ASBL's associates may have managed or co-managed public offering of securities for the subject company(ies) in the past twelve months.
- Research Analysts have not served as an officer, director or employee of the companies mentioned in the report.
- Neither ASBL nor its Research Analysts have been engaged in market making activity for the companies mentioned in the report.

Disclaimer

The research recommendation and information herein are solely for the personal information of the authorized recipient and does not construe to be an offer documents or any investment, legal or taxation advice or solicitation of any action based upon it. This report is not for public distribution or use by any person or entity, where such distribution, publication, availability or use would be contrary to law, regulation or subject to any registration or licensing requirement. We will not treat recipients as customer by virtue of their receiving this report. The report is based upon the information obtained from public sources that we consider reliable, but we do not guarantee its accuracy or completeness. ASBL shall not be in anyways responsible for any loss or damage that may arise to any such person from any inadvertent error in the information contained in this report. The recipients of this report should rely on their own investigations.