

# Technical Report

## Closing Brief

Benchmark indices on the last day of the trading week ended flat with no clear support from domestic and global cues. Nifty finally settled at 9588.05 levels up by 10 points or 0.10%.

## Technical Build up

- ❖ Bullish candle with decrease in volume
- ❖ Buy crossover in oscillators.
- ❖ Upper band of Bollinger exist at 9762
- ❖ Crucial moving average of 20/50 SMA are at 9596 and 9418
- ❖ 200 SMA trend deciding level exist at 8797

## Outlook for the day

Indian Equity market started the week on robust note and gained over half a percent riding on GST headway and expectations of reforms by Sebi. NPA resolution had been gaining traction after the Reserve Bank asked lenders to initiate bankruptcy proceedings against large defaulters. On the technical front, negated its formation of lower top - lower bottom and given the upside breakout from its falling channel on the hourly scale. Nifty also closed above its short term moving averages such as 5-days exponential moving average (DEMA), 10-DEMA, and 20-DEMA which is a bullish sign as a result of short covering which propped the index towards 9700. Going forward, the Index now has support placed at 9600-9620 and resistance comes in at 9700-9710 above which higher levels of 9750-9775 open up. On the option front maximum Put OI is at 9500 and 9600 strike while maximum Call OI is at 9700 and 9800 strike.

## Technical & Derivative Report

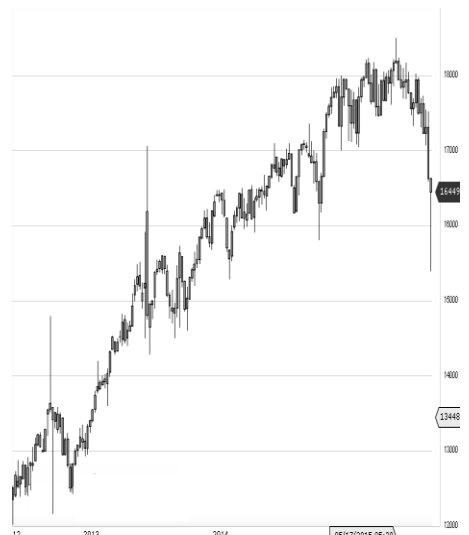
World Indices	LTP	Daily Ch(Pts)	Daily Ch(%)
Dow Jones	21528	144	0.68
Nasdaq	6239	87	1.42
S&P 500	2453	20	0.83
FTSE 100	7523	60	0.81
DAX	12888	136	1.07
Hang Seng	25922	-1	-0.01
Nikkei	20286	218	1.09
Sensex	31311	255	0.82
Nifty	9657	69	0.72

Commodity /Forex	LTP	Daily Ch(Pts)	Daily Ch(%)
Gold (\$/Oz)	1246.10	-0.60	-0.05
Silver (\$/Oz)	16.52	0.02	0.11
Copper(USD/lb.)	260.35	-0.25	-0.10
Brent Crude(USD/bbl)	46.99	0.08	0.17
USD/INR	64.42	-0.0025	-
USD/YEN	111.70	0.17	0.15
USD/EUR	1.1153	0.0004	0.04

Support/Resistance levels for Indian Equity Indices					
	S1	S2	CMP	R1	R2
Sensex	31120	31020	31311	31455	31585
Nifty	9600	9570	9657	9700	9740
Nifty (Fut)	9620	9590	9675	9720	9760

Pivot Level	
Sensex	31279
Nifty	9648

**US:** US market closed higher on Monday as technology stocks recovered from a wobbly performance last week. Technically DJIA is presently trading at the 5th leg through Elliot wave count with negative divergence in oscillators.



### Increase in OI with Increase in Price (Long Buildup)

Symbol	Prev OI	Curr OI	OI Chg (%)	Curr Pr.	Pr.Chg (%)
IBREALE	2172000	3509000			
ST	0	0	61.6	202.5	1.7
TATAEL					
XSI	1144800	1440800	25.9	1623.15	4.6
ADANIP					
ORTS	8840000	9995000	13.1	374.3	2.9
PAGEIN					
D	24050	26300	9.4	16702.15	0.3
VGUAR					
D	3339000	3591000	7.6	189	4.1

### Increase in OI with Decrease in Price (Short Buildup)

Symbol	Prev OI	Curr OI	OI Chg (%)	Curr Pr.	Pr.Chg (%)
	2434400	3164000			
HDIL	0	0	30	90.1	[2.2]
WOCKP					
HARMA	3421800	4314600	26.1	587	[7.5]
INDIANB	3136000	3568000	13.8	308.25	[0.2]
EICHER					
MOT	124375	137525	10.6	28520	[1.1]
	2573200	2843400			
DISHTV	0	0	10.5	77.8	[2.6]

Nifty gained by 0.72% with Nifty future added 0.5 lakh shares in open interest and stock future added 551.7 Lakh shares in open interest.

- Nifty PCR increased to 1.21 from 1.11
- Total Nifty Calls shaded 38.3 lakh shares in open interest.
- Total Nifty Puts added 23.0 lakh shares in open interest.
- Maximum open interest (Nifty) in Calls for May series is at 9700 and 9500 put.
- FII's sold net Rs. 250.39 Cr(provisional), while DIIs bought net Rs.529.9Cr in cash market.
- FII bought net Rs.55.22 Cr in F&O
- Securities in Ban Period: ALBK, BANKINDIA, BEML, DLF, HDIL, IBREALEST, INFIBEAM, JPASSOCIAT, KSCL, ORIENTBANK, RCOM & WOOCKPHARMA

## Nifty Tracker

PARTICULARS	19/06/2017	16/06/2017	15/06/2017	14/06/2017
Spot	9657.55	9588.05	9578.05	9618.15
% Change in Spot	0.72%	0.10%	-0.42%	0.12%
Nifty(FUT) June	9675.25	9597.25	9600.9	9637.6
Nifty(FUT) June Vol.	95051	78625	80763	78573
Nifty(FUT) June - OI	21115650	21211125	21589050	21426525
Nifty(FUT) July	9694.7	9616.75	9620.55	9656.1
Nifty(FUT) July Vol.	5558	3947	3334	3798
Nifty(FUT) July - OI	1834275	1682775	1615425	1566525

## Trade Statistics for 19/06/2017

PARTICULARS	NO. OF CONTRACTS	TURNOVER (RS. CR.)	PUT CALL RATIO
NSE Index Futures	1,64,125	13267	-
NSE Stock Futures	5,18,115	38227	-
NSE Index Options	41,80,362	3,48,670.36	-
NSE Stock Options	3,94,761	29440	0.45
NSE F&O Total Turnover	52,57,363	429,604	0.94
NSE Cash Turnover	-	20,059.70	-
BSE Cash Turnover	-	3031.9	-
Total Turnover	-	452696	-

## FII Corner (F&O)

FII NET BUYING/SELLING & CHANGE IN OPEN INTEREST (Cr. Rupee)						
PARTICULARS	19/06/2017		16/06/2017		15/06/2017	
	Net Buying /Selling	Change In Open interest	Net Buying /Selling	Change In Open interest	Net Buying /Selling	Change In Open interest
Index Future	145	-112	-276	-657	-578	28
Index option	733	251	111	1754	927	809
Stock Future	-937	806	-500	37	-1007	-43
Stock option	114	195	22	140	-25	259
Total	55	1140	-643	1274	-683	1053

## Market Open Interest

ADDITION/REDUCTION IN MARKET OPEN INTEREST					
Contracts	19/06/2017	16/06/2017	15/06/2017	14/06/2017	13/06/2017
Index Futures	155	-539	98	-441	-59
Index Options	1735	464	850	944	394
Stock Futures	1943	-23838	19013	6169	4077
Stock Options	489	539	5004	-3610	768
F&O Total	4322	-23375	24965.31	3062.37	5180.46

## Nifty Option Open Interest Statistics

NIFTY OPTIONS HIGHEST ADDITION IN OPEN INTEREST						
Expiry	Strike	Option Type	Settlement Price	Volume	Open Interest	Change In OI
29-Jun-17	9700	PE	66.1	117121	2710425	1049100
29-Jun-17	9650	PE	43.05	38511	1058550	616650
29-Jun-17	9600	PE	29.5	271478	6291675	428400
27-Jul-17	9600	PE	79.65	13252	1119825	277950
27-Jul-17	9500	PE	55.2	12379	1265700	225000
29-Jun-17	9300	PE	3.95	63112	3501825	165600
27-Jul-17	10000	CE	19.15	11500	1387125	143025
28-Dec-17	9100	PE	105.05	1886	192825	141075
29-Jun-17	9100	PE	2	19172	1552275	125625
29-Jun-17	9550	PE	18.85	48595	970650	121050

NIFTY OPTIONS HIGHEST REDUCTION IN OPEN INTEREST						
Expiry	Strike	Option Type	Settlement Price	Volume	Open Interest	Change In OI
29-Jun-17	9600	CE	103.45	174494	3694275	-1719225
29-Jun-17	9700	CE	44.15	295626	6577875	-1024950
29-Jun-17	9500	PE	13.4	210050	6312225	-720900
29-Jun-17	9450	PE	9.6	32712	670500	-516225
29-Jun-17	9650	CE	69.15	53863	937275	-457275
29-Jun-17	9800	CE	14.25	169108	4616175	-337425
29-Jun-17	9500	CE	185.15	25550	1999800	-231825
29-Jun-17	9400	PE	7.25	131390	5003925	-169875
29-Jun-17	10000	CE	1.75	39048	3155550	-152700
29-Jun-17	9750	CE	25.05	52362	919425	-111750

## Stock Option Open Interest Statistics

STOCK OPTIONS WITH HIGHEST ADDITION IN OPEN INTEREST							
Symbol	Expiry	Strike	Option Type	Settl. Price	Volume	Open Interest	Change in OI
SUZLON	29-Jun-17	22.5	CE	0.05	583	33570000	3660000
IBREALEST	29-Jun-17	210	CE	3.9	1070	1900000	1750000
IBREALEST	29-Jun-17	215	CE	2.6	379	1360000	1290000
HDIL	29-Jun-17	95	CE	1.25	1142	2888000	1280000
HDIL	29-Jun-17	100	CE	0.6	1200	4448000	1184000
IBREALEST	29-Jun-17	205	CE	5.55	554	1550000	1160000
ADANIPOWER	29-Jun-17	30	CE	0.2	167	9780000	1020000
DISHTV	29-Jun-17	80	CE	1.05	228	1365000	952000
HDIL	29-Jun-17	52.5	PE	0.05	101	1176000	808000
IBREALEST	29-Jun-17	70	PE	0.05	80	800000	800000

STOCK OPTIONS WITH HIGHEST REDUCTION IN OPEN INTEREST							
Symbol	Expiry	Strike	Option Type	Settl. Price	Volume	Open Int.	Change in OI
JPASSOCIAT	29-Jun-17	12.5	CE	2.4	20	5576000	-1224000
JPASSOCIAT	29-Jun-17	15	CE	0.65	38	20944000	-1224000
GMRINFRA	29-Jun-17	22.5	CE	0.1	146	20205000	-1125000
DLF	29-Jun-17	190	PE	3.6	279	2270000	-760000
GMRINFRA	29-Jun-17	17.5	CE	2.05	73	9990000	-675000
HINDALCO	29-Jun-17	200	CE	5.6	1649	2044000	-661500
RELIANCE	29-Jun-17	1400	CE	26.15	8305	1366000	-639500
ICICIBANK	29-Jun-17	330	CE	2.35	1146	3512500	-522500
SBIN	29-Jun-17	300	CE	1.35	1634	8484000	-519000
ICICIBANK	29-Jun-17	320	CE	5.5	1947	3450000	-485000

## Research Team

Name	Designation	Email ID	Contact No.
Paras Bothra	President Equity Research	paras@ashikagroup.com	+91 22 6611 1704
Krishna Kumar Agarwal	Equity Research Analyst	krishna.a@ashikagroup.com	+91 33 4036 0646
Partha Mazumder	Equity Research Analyst	partha.m@ashikagroup.com	+91 33 4036 0647
Arijit Malakar	Equity Research Analyst	amalakar@ashikagroup.com	+91 33 4036 0644
Kapil Jagasia, CFA	Equity Research Analyst	kapil.j@ashikagroup.com	+91 22 6611 1715
Tirthankar Das	Technical & Derivative Analyst	tirthankar.d@ashikagroup.com	+91 33 4036 0645

Ashika Stock Broking Limited ("ASBL") or Research Entity has started its journey in the year 1994 and is engaged in the business of broking services, depository services, distributor of financial products (Mutual fund, IPO & Bonds). This research report has been prepared and distributed by ASBL in the sole capacity of a Research Analyst (Reg No. INH000000206) of SEBI (Research Analyst) Regulations 2014. ASBL is a wholly owned subsidiary of Ashika Global Securities (P) Ltd., a RBI registered non-deposit taking NBFC Company. Ashika group (details is enumerated on our website [www.ashikagroup.com](http://www.ashikagroup.com)) is an integrated financial service provider inter alia engaged in the business of Investment Banking, Corporate Lending, Commodity Broking, Debt Syndication & Other Advisory Services.

There were no significant and material disciplinary actions against ASBL taken by any regulatory authority during last three years.

### Disclosure

ASBL or its associates, its Research Analysts (including their relatives) may have financial interest in the subject company(ies). However, the said financial interest is not limited to having an open stock market position in /acting as advisor to /having a loan transaction with the subject company(ies) apart from registration as clients.

- 1) ASBL or its Research Analysts (including their relatives) do not have any actual / beneficial ownership of 1% or more of securities of the subject company(ies) at the end of the month immediately preceding the date of publication of this report or date of the public appearance. However ASBL's associates may have actual / beneficial ownership of 1% or more of securities of the subject company(ies).
- 2) ASBL or their Research Analysts (including their relatives) do not have any other material conflict of interest at the time of publication of this research report or date of the public appearance. However ASBL's associates might have an actual / potential conflict of interest (other than ownership).
- 3) ASBL or its associates may have received compensation for investment banking, merchant banking, and brokerage services and for other products and services from the subject companies during the preceding 12 months. However, ASBL or its associates or its Research analysts (forming part of Research Desk) have not received any compensation or other benefits from the subject companies or third parties in connection with the research report. Moreover, Research Analysts have not received any compensation from the companies mentioned herein in the past twelve months.
- 4) ASBL or their Research Analysts have not managed or co-managed public offering of securities for the subject company(ies) in the past twelve months. However ASBL's associates may have managed or co-managed public offering of securities for the subject company(ies) in the past twelve months.
- 5) Research Analysts have not served as an officer, director or employee of the companies mentioned in the report.
- 6) Neither ASBL nor its Research Analysts have been engaged in market making activity for the companies mentioned in the report.

### Disclaimer

The research recommendation and information herein are solely for the personal information of the authorized recipient and does not construe to be an offer documents or any investment, legal or taxation advice or solicitation of any action based upon it. This report is not for public distribution or use by any person or entity, where such distribution, publication, availability or use would be contrary to law, regulation or subject to any registration or licensing requirement. We will not treat recipients as customer by virtue of their receiving this report. The report is based upon the information obtained from public sources that we consider reliable, but we do not guarantee its accuracy or completeness. ASBL shall not be in anyways responsible for any loss or damage that may arise to any such person from any inadvertent error in the information contained in this report. The recipients of this report should rely on their own investigations.