

NIFTY FUT : IMMEDIATE SUPPORT AT 9580



Source: Falcon, BP Equities Research

Nifty futures closed flat at 9621. Index formed an indecisive candlestick pattern which suggest lack of buying followup at higher levels. Earlier index has failed to sustain below its immediate support of 9370 and saw a sharp recovery and covered the losses accrued in last five sessions. Going ahead index has immediate resistance at 9630, a sustenance above this level will continue the up move towards 9690-9750 while support comes at 9580-9520.

Intraday Nifty Future

Resistance—9630/9690/9750

Support—9580/9520/9450

BANK NIFTY FUT : RESISTANCE AT 23400



Source: Falcon, BP Equities Research

Bank Nifty futures closed 0.30% higher at 23322. Index failed to violate its immediate support of 23100 and regained the loss of Monday. Earlier index has failed to sustain below its immediate support of 22500 and saw a sharp recovery and covered the losses accrued in last five sessions. Going ahead till index maintains above 23300 it is expected to continue its up move towards 23650-23800 while support past 23300 comes at 23100-22900.

Intraday Bank Nifty Future

Resistance—23500/23650/23800

Support—23300/23100/22900

Technical Trend

INTRADAY TRADER'S PICKS

Sr.No.	STOCK	CLOSE	S1	S2	S3	R1	R2	R3	RECOMMENDATION
1	BRITANNIA	3533	3500	3450	3400	3600	3650	3700	BUY ABOVE 3550
2	FINPIPE	609	600	594	588	624	630	636	BUY ABOVE 612
3	MARKSANS	42.95	42.5	42	41.5	44.5	45	45.5	BUY ABOVE 43.50
4	RPOWER	41.30	40.5	40	39.5	42.5	43	43.5	BUY ABOVE 41.5
5	TECHM	390	388	383	378	398	403	408	BUY ABOVE 393

Technical Trend

DERIVATIVES

INDICES SNAPSHOT

SCRIPS	CP AS ON 30/05/2017	CP AS ON 31/05/2017	Change (%)	OI AS ON 30/05/2017	OI AS ON 31/05/2017	Change (%)
BANKNIFTY	23251.5	23321.75	0.30	3243240	3268160	0.77
NIFTY	9619.85	9626.05	0.06	21961875	23059875	5.00
NIFTYIT	10585	10525	-0.57	25000	25150	0.60

Derivative Highlights

- ⇒ Nifty Future closed with a premium of 5 points v/s a discount of 5 points .
- ⇒ Nifty Future Open Interest increased by 5%. BankNifty Future Open Interest increased by 0.77%.
- ⇒ Nifty PCR - OI increased from 1.12 to 1.17, Nifty PCR - Vol increased from 0.92 to 1.15.
- ⇒ FII Bought 1048.93 crore while DII Sold Rs. 939.54 crore in the Cash Segment. FII Bought Rs. 1129.48 crore in Index Futures and Sold Rs. 31.31 crore in index options, while in Future they Sold Rs. 1071.84 crore and Bought Rs 277.15 crore in stock options.
- ⇒ Among Index Option space, Highest Open Interest concentration was seen in 9400 & 9500 Strike price among the PE options. Where as among CE Options Highest Open Interest Concentration was seen in 9700 & 9600 Strike price.
- ⇒ Highest Open Interest Build Up among the PE options was seen in 9400 & 9600 Strike price. Among CE options highest build up was seen in 9600 & 9800 Strike price.

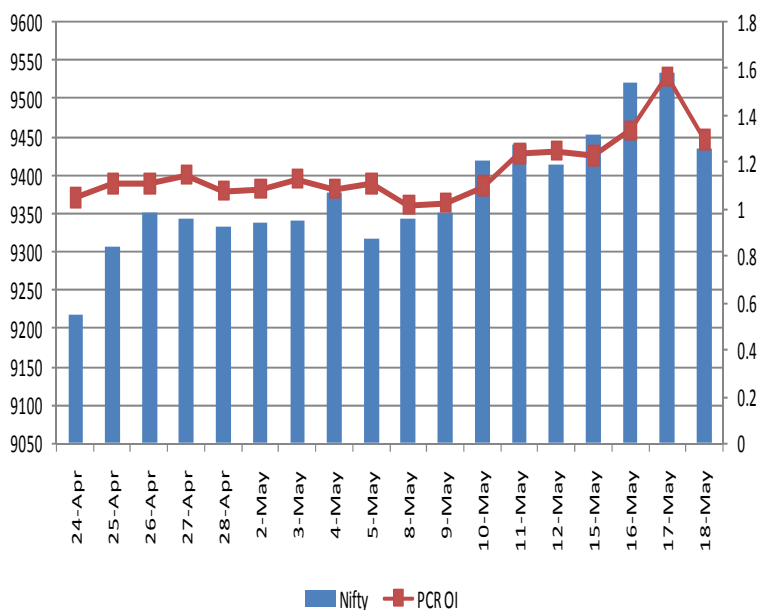
OI Concentration

PUT OPTION		CALL OPTION	
Strike Price	Open Interest	Strike Price	Open Interest
9400	5701650	9700	4399725
9500	5532300	9600	3880650
9300	4172400	9800	3682500
9200	3378775	9500	3037125
9600	3356175	10000	2388525

Highest Change in OI

PUT OPTION		CALL OPTION	
Strike Price	Change in OI	Strike Price	Change in OI
9400	756450	9600	432075
9600	686775	9800	207000
9500	617925	10000	200700
9700	131250	9650	196200
8600	41025	9700	189000

Nifty Future Price V/S PCR-OI



Technical Trend

Stock Analysis

Long Build-up	Long Unwinding	Short Build-up	Short Covering
ABIRLANUVO	MARICO	BAJAJ-AUTO	AMARAJABAT
CASTROLIND	TATASTEEL	BHARTIARTL	BHARATFORG
DHFL	YESBANK	INFRATEL	CESC
DRREDDY		INFY	ENGINEERSIN
GRASIM		JSWSTEEL	GLENMARK
HDFCBANK		ORIENTBANK	RBLBANK

STATISTICS

Highest Premium

SCRIPS	Premium %	Price change %
JPASSOCIAT	1.27	2.12
SINTEX	1.08	-4.30
TV18BRDCST	0.85	0.71
PEL	0.85	0.62
CHOLAFIN	0.81	2.85

Highest Discount

SCRIPS	Premium %	Price change %
DISHTV	-2.37	-0.65
PNB	-2.16	2.84
RBLBANK	-2.08	3.57
JUSTDIAL	-1.89	-0.81
ORIENTBANK	-1.61	-0.80

TOP 5 VOLUME GAINER FOR THE SESSION

SCRIPS	CP AS ON 30/05/2017	CP AS ON 31/05/2017	Change (%)	Vol AS ON 30/05/2017	Vol AS ON 31/05/2017	Change (%)
MCDOWELL-N	2104.45	2279	8.29	3244	18679	476%
IOC	421.5	426.45	1.17	4832	26261	443%
M&MFIN	333.05	359.5	7.94	2097	7552	260%
JETAIRWAYS	459.75	480.35	4.48	4948	14907	201%
ICICIBANK	319	321.95	0.92	12412	36849	197%

TOP 5 VOLUME LOSER FOR THE SESSION

SCRIPS	CP AS ON 30/05/2017	CP AS ON 31/05/2017	Change (%)	Vol AS ON 30/05/2017	Vol AS ON 31/05/2017	Change (%)
JUBLFOOD	903.55	912.65	1.01	15852	4006	-75%
BHEL	140.7	139.15	-1.10	15017	4073	-73%
AUOPHARMA	580.9	576.1	-0.83	39123	11334	-71%
ADANIANT	118.7	117.4	-1.10	5899	1781	-70%
BATAINDIA	543.6	548	0.81	3654	1115	-69%

Technical Trend

TOP 10 OPEN INTEREST GAINER FOR THE SESSION

SCRIPS	CP AS ON 30/05/2017	CP AS ON 31/05/2017	Change (%)	OI AS ON 30/05/2017	OI AS ON 31/05/2017	Change (%)
RAMCOCEM	689.25	729.15	5.79	86400	218400	152.78
IOC	421.5	426.45	1.17	15862500	28837500	81.80
ICICIBANK	319	321.95	0.92	72985000	102185000	40.01
M&M	1369.7	1425.4	4.07	3443500	4013500	16.55
ESCORTS	672	696.7	3.68	1872200	2154900	15.10
BANKINDIA	146.15	139.95	-4.24	22320000	25608000	14.73
GAIL	407.75	413.45	1.40	10380000	11894000	14.59
CANBK	354.65	346.7	-2.24	13729968	15497100	12.87
HDIL	86.45	89.75	3.82	23512000	26536000	12.86
NATIONALUM	66.8	67.55	1.12	4176000	4696000	12.45

TOP 10 OPEN INTEREST LOSER FOR THE SESSION

SCRIPS	CP AS ON 30/05/2017	CP AS ON 31/05/2017	Change (%)	OI AS ON 30/05/2017	OI AS ON 31/05/2017	Change (%)
MFSL	564.1	584.7	3.65	7062000	5969000	-15.48
RCOM	20.15	20.2	0.25	133718000	124050000	-7.23
JETAIRWAYS	459.75	480.35	4.48	4745200	4417600	-6.90
MCDOWELL-N	2104.45	2279	8.29	2677500	2524750	-5.70
PFC	137.55	134.2	-2.44	43320000	41016000	-5.32
PVR	1454.05	1464.5	0.72	406400	385200	-5.22
GODREJIND	613.65	607.45	-1.01	1950000	1857000	-4.77
NIITTECH	527.65	523.35	-0.81	697500	666000	-4.52
PIDILITIND	767.85	771.8	0.51	1368000	1307000	-4.46
TITAN	472.7	477.8	1.08	5320500	5086500	-4.40

Technical Trend

Pivot Report– Nifty 50

Symbol	PClose	Support3	Support2	Support1	Pivot	Resist1	Resist2	Resist3
ACC	1637.1	1596.3	1612.4	1624.7	1640.9	1653.2	1669.3	1681.6
ADANIPTS	339.0	325.9	331.2	335.1	340.4	344.3	349.6	353.5
AMBUJACEM	241.3	234.4	237.2	239.2	242.0	244.0	246.8	248.8
ASIANPAINT	1151.2	1121.7	1133.1	1142.2	1153.6	1162.6	1174.0	1183.1
AUROPHARMA	574.2	550.0	558.8	566.5	575.2	582.9	591.7	599.4
AXISBANK	514.1	503.9	506.7	510.4	513.2	516.9	519.7	523.4
BAJAJ-AUTO	2846.0	2801.0	2818.0	2832.0	2849.0	2863.0	2880.0	2894.0
BANKBARODA	178.1	172.6	174.7	176.4	178.4	180.1	182.2	183.9
BHARTIARTL	371.6	358.6	363.3	367.4	372.2	376.3	381.0	385.1
BOSCHLTD	23338.0	22709.4	22967.9	23152.9	23411.4	23596.4	23854.9	24039.9
BPCL	742.7	727.6	732.8	737.7	742.9	747.9	753.1	758.0
CIPLA	516.4	492.4	498.7	507.5	513.8	522.6	528.9	537.7
COALINDIA	262.6	253.2	257.6	260.1	264.5	267.0	271.4	273.9
DRREDDY	2523.9	2397.2	2430.6	2477.2	2510.6	2557.2	2590.6	2637.2
EICHERMOT	28435.0	27937.4	28082.5	28258.8	28403.9	28580.1	28725.2	28901.5
GAIL	414.0	396.3	401.3	407.7	412.7	419.1	424.1	430.5
HCLTECH	864.3	847.5	852.9	858.6	863.9	869.6	875.0	880.7
HDFC	1569.9	1527.4	1546.4	1558.1	1577.1	1588.9	1607.9	1619.6
HDFCBANK	1636.2	1605.4	1614.3	1625.2	1634.1	1645.1	1654.0	1664.9
HEROMOTOCO	3745.5	3683.0	3702.1	3723.8	3742.9	3764.6	3783.7	3805.4
HINDALCO	200.7	189.5	194.7	197.7	203.0	206.0	211.2	214.2
HINDUNILVR	1067.0	1047.2	1054.1	1060.6	1067.5	1074.0	1080.9	1087.4
IBULHSGFIN	1160.6	1074.5	1093.2	1126.9	1145.6	1179.3	1198.0	1231.7
ICICIBANK	326.5	312.2	315.4	320.9	324.2	329.7	332.9	338.4
INDUSINDBK	1480.7	1457.4	1464.7	1472.7	1480.1	1488.1	1495.4	1503.4
INFRATEL	366.6	346.4	353.5	360.1	367.2	373.8	380.9	387.5
INFY	962.6	937.3	948.9	955.7	967.3	974.1	985.7	992.6
IOC	429.5	409.1	415.2	422.3	428.4	435.5	441.6	448.7
ITC	311.8	301.7	304.3	308.1	310.7	314.5	317.1	320.9
KOTAKBANK	966.1	953.1	957.8	961.9	966.6	970.7	975.4	979.5
LT	1760.7	1711.6	1731.2	1745.9	1765.5	1780.2	1799.8	1814.5
LUPIN	1161.0	1089.8	1113.7	1137.3	1161.2	1184.8	1208.7	1232.3
M&M	1417.0	1333.3	1362.7	1389.8	1419.2	1446.3	1475.7	1502.8
MARUTI	7211.0	7034.9	7084.9	7148.0	7198.0	7261.0	7311.0	7374.1
NTPC	160.2	156.2	158.0	159.1	160.9	162.0	163.8	164.9
ONGC	177.0	172.0	173.6	175.3	176.9	178.6	180.2	181.9
POWERGRID	208.0	201.2	203.1	205.5	207.4	209.9	211.8	214.2
RELIANCE	1340.7	1296.2	1316.0	1328.4	1348.2	1360.5	1380.3	1392.7
SBIN	288.3	282.2	284.7	286.5	289.0	290.8	293.3	295.1
SUNPHARMA	501.6	484.6	492.2	496.9	504.5	509.2	516.8	521.5
TATAMOTORS	476.2	464.8	469.8	473.0	478.0	481.2	486.2	489.4
TATAMTRDVR	287.9	278.2	280.9	284.4	287.2	290.7	293.4	296.9
TATAPOWER	81.0	78.2	79.4	80.2	81.4	82.2	83.4	84.2
TATASTEEL	504.7	487.3	494.9	499.8	507.4	512.3	519.9	524.8
TCS	2546.6	2481.1	2504.5	2525.6	2549.0	2570.1	2593.5	2614.6
TECHM	390.0	379.1	382.5	386.3	389.7	393.5	396.9	400.7
ULTRACEMCO	4195.2	3927.4	4006.8	4101.0	4180.5	4274.7	4354.1	4448.3
VEDL	238.7	227.1	232.3	235.5	240.7	243.9	249.1	252.3
WIPRO	535.5	525.3	529.2	532.3	536.2	539.3	543.2	546.3
YESBANK	1431.4	1371.8	1390.5	1410.9	1429.7	1450.1	1468.8	1489.2
ZEEL	514.9	496.4	504.2	509.5	517.3	522.6	530.4	535.7



BP WEALTH

Technical Research Desk

Tel: +91 22 61596173

Institutional Sales Desk

Tel: +91 22 61596403/04/05

Disclaimer Appendix

Analyst s holding in the Stock : Nil

Analyst s Certification:

We analysts and the authors of this report, hereby certify that all of the views expressed in this research report accurately reflect our personal views about any and all of the subject issuer s or securities. We also certify that no part of our compensation was, is, or will be directly or indirectly related to the specific recommendation s or view s in this report. Analysts aren't registered as research analysts by FINRA and might not be an associated person of the BP Equities Pvt. Ltd. Institutional Equities.

General Disclaimer

This report has been prepared by the research department of BP EQUITIES Pvt. Ltd, is for information purposes only. This report is not construed as an offer to sell or the solicitation of an offer to buy or sell any security in any jurisdiction where such an offer or solicitation would be illegal.

BP EQUITIES Pvt. Ltd have exercised due diligence in checking the correctness and authenticity of the information contained herein, so far as it relates to current and historical information, but do not guarantee its accuracy or completeness. The opinions expressed are our current opinions as of the date appearing in the material and may be subject to change from time to time. Prospective investors are cautioned that any forward looking statement are not predictions and are subject to change without prior notice.

Recipients of this material should rely on their own investigations and take their own professional advice. BP EQUITIES Pvt. Ltd or any of its affiliates or employees shall not be in any way responsible for any loss or damage that may arise to any person from any inadvertent error in the information contained in this report. BP EQUITIES Pvt. Ltd. or any of its affiliates or employees do not provide, at any time, any express or implied warranty of any kind, regarding any matter pertaining to this report, including without limitation the implied warranties of merchantability, fitness for a particular purpose, and non-infringement. The recipients of this report should rely on their own investigations.

BP EQUITIES Pvt. Ltd and/or its affiliates and/or employees may have interests/ positions, financial or otherwise in the securities mentioned in this report. Opinions expressed are our current opinions as of the date appearing on this material only. While we endeavor to update on a reasonable basis the information discussed in this material, there may be regulatory, compliance, or other reasons that prevent us from doing so.

This report is not directed to or intended for display, downloading, printing, reproducing or for distribution to or use by any person in any locality, state and country or other jurisdiction where such distribution, publication or use would be contrary to the law or regulation or would subject to BP EQUITIES Pvt. Ltd or any of its affiliates to any registration or licensing requirement within such jurisdiction.

Corporate Office:

4th floor,
Rustom Bldg,
29, Veer Nariman Road, Fort,
Mumbai-400001
Phone- +91 22 6159 6464
Fax-+91 22 6159 6160
Website- www.bpwealth.com

Registered Office:

24/26, 1st Floor, Cama Building,
Dalal street, Fort,
Mumbai-400001
BP Equities Pvt. Ltd.
CIN No: U67120MH1997PTC107392