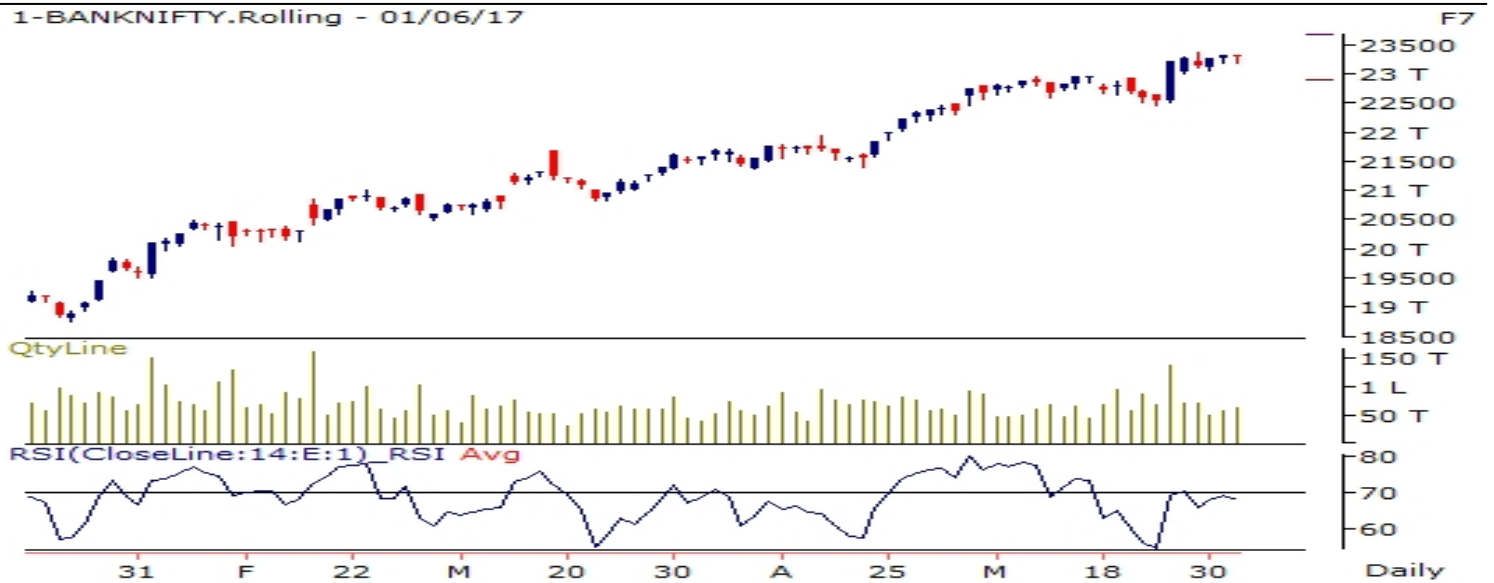


NIFTY FUT : IMMEDIATE SUPPORT AT 9580



Source: Falcon, BP Equities Research

Nifty futures closed flat at 9630. Index formed an indecisive candlestick pattern for second consecutive day which suggest lack of buying follow up at higher levels. Earlier index has failed to sustain below its immediate support of 9370 and saw a sharp recovery and covered the losses accrued in last five sessions. Going ahead index has immediate resistance at 9630, a sustenance above this level will continue the up move towards 9690-9750 while support comes at 9580-9520.

Intraday Nifty Future Resistance—9630/9690/9750 Support—9580/9520/9450

BANK NIFTY FUT : RESISTANCE AT 23500



Source: Falcon, BP Equities Research

Bank Nifty futures closed 0.13% lower at 23292. Index failed to violate its immediate support of 23100 and regained the loss of Monday. Earlier index has failed to sustain below its immediate support of 22500 and saw a sharp recovery and covered the losses accrued in last five sessions. Going ahead till index maintains above 23300 it is expected to continue its up move towards 23650-23800 while support past 23300 comes at 23100-22900.

Intraday Bank Nifty Future Resistance—23500/23650/23800 Support—23300/23100/22900

Technical Trend

INTRADAY TRADER'S PICKS

Sr.No.	STOCK	CLOSE	S1	S2	S3	R1	R2	R3	RECOMMENDATION
1	ABAN	181.55	179	176	173	187	190	193	BUY ABOVE 183
2	BHEL	138.50	136	133	130	144	147	150	BUY ABOVE 140
3	GODREJIND	615.30	606	598	592	632	638	644	BUY ABOVE 619
4	MARKSANS	45	44.5	44	43.5	46.5	47	47.5	BUY ABOVE 45.5
5	MAWANASUG	78.60	77	75	73	81	83	85	BUY ABOVE 79

Technical Trend

DERIVATIVES

INDICES SNAPSHOT

SCRIPS	CP AS ON 31/05/2017	CP AS ON 1/06/2017	Change (%)	OI AS ON 31/05/2017	OI AS ON 1/06/2017	Change (%)
BANKNIFTY	23321.75	23292.05	-0.13	3268160	3187160	-2.48
NIFTY	9626.05	9630.1	0.04	23059875	23413200	1.53
NIFTYIT	10525	10576	0.48	25150	24550	-2.39

Derivative Highlights

- ⇒ Nifty Future closed with a premium of 5 points v/s a discount of 5 points .
- ⇒ Nifty Future Open Interest increased by 1.53%. BankNifty Future Open Interest decreased by 2.48%.
- ⇒ Nifty PCR - OI increased from 1.17 to 1.16, Nifty PCR - Vol increased from 0.92 to 1.15.
- ⇒ FII Sold Rs 517.31 crore while DII Bought Rs. 171.65 crore in the Cash Segment. FII Bought Rs. 344.57 crore in Index Futures and Bought Rs. 145.08 crore in index options, while in Future they Sold Rs. 549.49 crore and Bought Rs 117.20 crore in stock options.
- ⇒ Among Index Option space, Highest Open Interest concentration was seen in 9400 & 9500 Strike price among the PE options. Where as among CE Options Highest Open Interest Concentration was seen in 9700 & 9600 Strike price.
- ⇒ Highest Open Interest Build Up among the PE options was seen in 9400 & 9600 Strike price. Among CE options highest build up was seen in 9600 & 9800 Strike price.

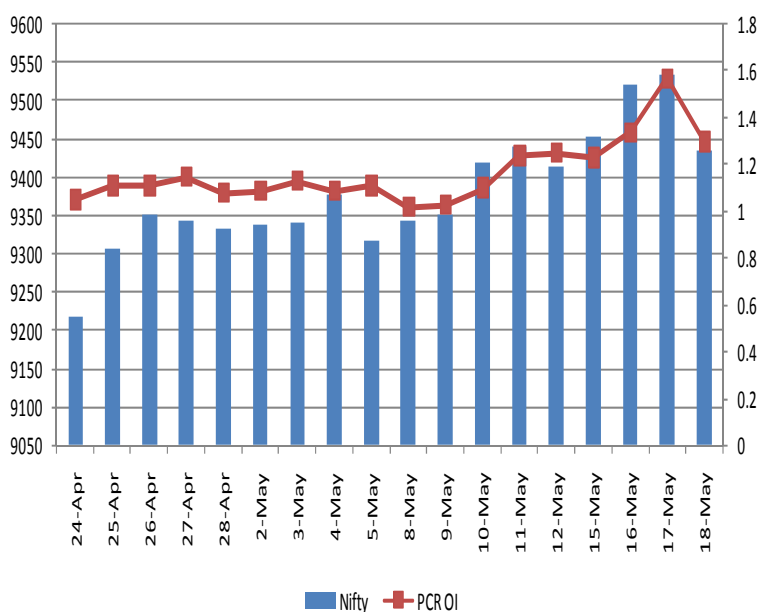
OI Concentration

PUT OPTION		CALL OPTION	
Strike Price	Open Interest	Strike Price	Open Interest
9400	5701650	9700	4399725
9500	5532300	9600	3880650
9300	4172400	9800	3682500
9200	3378775	9500	3037125
9600	3356175	10000	2388525

Highest Change in OI

PUT OPTION		CALL OPTION	
Strike Price	Change in OI	Strike Price	Change in OI
9400	756450	9600	432075
9600	686775	9800	207000
9500	617925	10000	200700
9700	131250	9650	196200
8600	41025	9700	189000

Nifty Future Price V/S PCR-OI



Technical Trend

Stock Analysis

Long Build-up	Long Unwinding	Short Build-up	Short Covering
ACC	BAJAJ-AUTO	ASHOKLEY	AJANTPHARM
BIOCON	CONCOR	BPCL	BHARATFORG
DABUR		CIPLA	CAPF
DCBBANK		DISHTV	GRANULES
HINDUNILVR		HEROMOTOCO	MFSL
SUNPHARMA		ONGC	STAR

STATISTICS

Highest Premium

SCRIPS	Premium %	Price change %
JPASSOCIAT	1.27	2.12
SINTEX	1.08	-4.30
TV18BRDCST	0.85	0.71
PEL	0.85	0.62
CHOLAFIN	0.81	2.85

Highest Discount

SCRIPS	Premium %	Price change %
DISHTV	-2.37	-0.65
PNB	-2.16	2.84
RBLBANK	-2.08	3.57
JUSTDIAL	-1.89	-0.81
ORIENTBANK	-1.61	-0.80

TOP 5 VOLUME GAINER FOR THE SESSION

SCRIPS	CP AS ON 31/05/2017	CP AS ON 1/06/2017	Change (%)	Vol AS ON 31/05/2017	Vol AS ON 1/06/2017	Change (%)
BALKRISIND	1483.5	1597.9	7.71	243	2099	764%
COLPAL	1021.15	1043.05	2.14	223	1779	698%
DCBBANK	192.15	201.7	4.97	562	3186	467%
APOLLOTYRE	227.35	240.9	5.96	1318	7122	440%
MRF	66045.15	68407.4	3.58	778	3469	346%

TOP 5 VOLUME LOSER FOR THE SESSION

SCRIPS	CP AS ON 31/05/2017	CP AS ON 1/06/2017	Change (%)	Vol AS ON 31/05/2017	Vol AS ON 1/06/2017	Change (%)
JPASSOCIAT	12.1	12.25	1.24	2145	403	-81%
BEML	1228.75	1228.3	-0.04	5635	1157	-79%
NATIONALUM	67.55	66.75	-1.18	521	107	-79%
PVR	1464.5	1464.05	-0.03	743	166	-78%
RELCAPITAL	563.5	552.85	-1.89	18733	4361	-77%

Technical Trend

TOP 10 OPEN INTEREST GAINER FOR THE SESSION

SCRIPS	CP AS ON 31/05/2017	CP AS ON 1/06/2017	Change (%)	OI AS ON 31/05/2017	OI AS ON 1/06/2017	Change (%)
RAMCOCEM	729.15	726.65	-0.34	218400	361600	65.57
BALKRISIND	1483.5	1597.9	7.71	247600	378000	52.67
COLPAL	1021.15	1043.05	2.14	578200	804300	39.10
TORNTPHARM	1222.9	1189.95	-2.69	264000	328400	24.39
INDIANB	312.5	320.15	2.45	2336000	2848000	21.92
INFIBEAM	949.1	966.8	1.86	1411200	1679200	18.99
DCBBANK	192.15	201.7	4.97	4927500	5701500	15.71
HCC	40.5	41.45	2.35	6996000	8076000	15.44
MRPL	132.2	135.8	2.72	3415500	3807000	11.46
CEATLTD	1674	1769.4	5.70	1321600	1461600	10.59

TOP 10 OPEN INTEREST LOSER FOR THE SESSION

SCRIPS	CP AS ON 31/06/2017	CP AS ON 1/06/2017	Change (%)	OI AS ON 31/05/2017	OI AS ON 1/06/2017	Change (%)
MFSL	584.7	612.9	4.82	5969000	5339000	-10.55
BANKBARODA	177.25	179	0.99	40764500	37835000	-7.19
HDIL	89.75	91.1	1.50	26536000	24720000	-6.84
RELCAPITAL	563.5	552.85	-1.89	14563500	13585500	-6.72
ADANIPTS	341.3	350.3	2.64	10597500	9962500	-5.99
GLENMARK	638.9	659.05	3.15	7432600	7011900	-5.66
AJANTPHARM	1580.2	1616.35	2.29	360400	341600	-5.22
CGPOWER	82.8	83.9	1.33	22464000	21408000	-4.70
LICHSGFIN	735.05	739.05	0.54	5164500	4934600	-4.45
GODFRYPHLP	1235.55	1258.6	1.87	521000	498000	-4.41

Technical Trend

Pivot Report– Nifty 50

Symbol	PClose	Support3	Support2	Support1	Pivot	Resist1	Resist2	Resist3
ACC	1658.1	1605.8	1618.7	1638.4	1651.4	1671.1	1684.0	1703.7
ADANIPTS	349.2	326.2	331.9	340.6	346.3	354.9	360.6	369.3
AMBUJACEM	240.4	235.4	237.6	239.0	241.1	242.5	244.7	246.1
ASIANPAINT	1160.5	1112.8	1123.0	1141.7	1151.9	1170.6	1180.8	1199.5
AUOPHARMA	579.7	528.1	549.2	564.4	585.5	600.8	621.9	637.1
AXISBANK	509.3	494.1	499.8	504.6	510.3	515.0	520.7	525.5
BAJAJ-AUTO	2839.4	2755.7	2792.0	2815.7	2852.0	2875.6	2911.9	2935.6
BANKBARODA	179.0	173.2	174.7	176.9	178.4	180.5	182.0	184.2
BHARTIARTL	366.9	356.5	361.2	364.0	368.7	371.6	376.3	379.1
BOSCHLTD	23823.3	22504.4	22815.7	23319.5	23630.8	24134.6	24445.9	24949.7
BPCL	739.0	711.9	720.4	729.7	738.3	747.6	756.1	765.4
CIPLA	515.6	492.3	502.7	509.1	519.5	526.0	536.4	542.8
COALINDIA	265.4	260.0	261.4	263.4	264.7	266.7	268.1	270.1
DRREDDY	2522.8	2448.0	2481.0	2501.9	2534.8	2555.7	2588.7	2609.6
EICHERMOT	28793.4	28003.0	28251.5	28522.5	28771.0	29041.9	29290.4	29561.4
GAIL	410.4	399.3	403.4	406.9	410.9	414.4	418.5	422.0
HCLTECH	862.3	845.4	852.3	857.3	864.1	869.1	876.0	881.0
HDFC	1583.8	1525.6	1538.7	1561.2	1574.3	1596.8	1609.9	1632.4
HDFCBANK	1628.6	1600.2	1610.4	1619.5	1629.7	1638.8	1649.0	1658.1
HEROMOTOCO	3733.4	3583.6	3646.2	3689.8	3752.4	3796.0	3858.6	3902.2
HINDALCO	197.3	188.3	191.8	194.5	198.0	200.7	204.2	206.9
HINDUNILVR	1095.4	1033.0	1047.1	1071.2	1085.3	1109.5	1123.6	1147.7
IBULHSGFIN	1145.1	1101.5	1114.8	1129.9	1143.2	1158.3	1171.6	1186.7
ICICIBANK	320.1	307.1	311.9	316.0	320.8	324.9	329.7	333.8
INDUSINDBK	1485.6	1440.9	1455.6	1470.6	1485.3	1500.3	1515.0	1530.0
INFRATEL	376.3	361.2	365.5	370.9	375.2	380.5	384.8	390.2
INFY	971.4	938.9	948.7	960.1	969.9	981.2	991.0	1002.4
IOC	413.9	389.8	400.4	407.1	417.8	424.5	435.1	441.8
ITC	314.2	305.1	308.0	311.1	313.9	317.0	319.9	323.0
KOTAKBANK	962.7	949.3	954.1	958.4	963.2	967.5	972.3	976.6
LT	1792.8	1711.2	1729.6	1761.2	1779.6	1811.2	1829.6	1861.2
LUPIN	1146.3	1083.2	1112.8	1129.6	1159.2	1176.0	1205.6	1222.4
M&M	1425.3	1389.0	1402.6	1413.9	1427.5	1438.8	1452.4	1463.7
MARUTI	7146.6	6954.6	7032.3	7089.5	7167.2	7224.4	7302.1	7359.3
NTPC	160.7	157.6	158.6	159.6	160.6	161.7	162.7	163.7
ONGC	174.0	167.8	170.2	172.1	174.5	176.4	178.8	180.7
POWERGRID	207.7	202.8	204.6	206.1	207.9	209.5	211.3	212.8
RELIANCE	1328.3	1303.8	1313.4	1320.8	1330.4	1337.8	1347.4	1354.8
SBIN	287.5	277.4	281.0	284.2	287.8	291.0	294.6	297.8
SUNPHARMA	507.5	476.5	489.3	498.4	511.2	520.2	533.0	542.1
TATAMOTORS	476.7	467.4	470.5	473.6	476.6	479.7	482.8	485.9
TATAMTRDVR	288.3	280.4	283.3	285.8	288.6	291.1	294.0	296.5
TATAPOWER	80.7	78.8	79.4	80.1	80.7	81.4	82.0	82.7
TATASTEEL	497.2	477.5	485.8	491.5	499.7	505.4	513.7	519.4
TCS	2553.6	2500.4	2515.2	2534.4	2549.2	2568.4	2583.2	2602.4
TECHM	397.7	375.4	382.3	390.0	397.0	404.7	411.6	419.3
ULTRACEMCO	4198.4	4062.0	4110.8	4154.6	4203.3	4247.1	4295.9	4339.7
VEDL	231.3	217.2	224.0	227.6	234.4	238.0	244.8	248.4
WIPRO	541.2	525.1	529.9	535.5	540.3	545.9	550.7	556.3
YESBANK	1444.6	1398.2	1409.6	1427.1	1438.6	1456.1	1467.5	1485.0
ZEEL	522.0	507.8	511.2	516.6	519.9	525.3	528.7	534.1

**Disclaimer Appendix****Analyst s holding in the Stock : Nil****Analyst s Certification:**

We analysts and the authors of this report, hereby certify that all of the views expressed in this research report accurately reflect our personal views about any and all of the subject issuer s or securities. We also certify that no part of our compensation was, is, or will be directly or indirectly related to the specific recommendation s or view s in this report. Analysts aren't registered as research analysts by FINRA and might not be an associated person of the BP Equities Pvt. Ltd. Institutional Equities.

General Disclaimer

This report has been prepared by the research department of BP EQUITIES Pvt. Ltd, is for information purposes only. This report is not construed as an offer to sell or the solicitation of an offer to buy or sell any security in any jurisdiction where such an offer or solicitation would be illegal.

BP EQUITIES Pvt. Ltd have exercised due diligence in checking the correctness and authenticity of the information contained herein, so far as it relates to current and historical information, but do not guarantee its accuracy or completeness. The opinions expressed are our current opinions as of the date appearing in the material and may be subject to change from time to time. Prospective investors are cautioned that any forward looking statement are not predictions and are subject to change without prior notice.

Recipients of this material should rely on their own investigations and take their own professional advice. BP EQUITIES Pvt. Ltd or any of its affiliates or employees shall not be in any way responsible for any loss or damage that may arise to any person from any inadvertent error in the information contained in this report. BP EQUITIES Pvt. Ltd. or any of its affiliates or employees do not provide, at any time, any express or implied warranty of any kind, regarding any matter pertaining to this report, including without limitation the implied warranties of merchantability, fitness for a particular purpose, and non-infringement. The recipients of this report should rely on their own investigations.

BP EQUITIES Pvt. Ltd and/or its affiliates and/or employees may have interests/ positions, financial or otherwise in the securities mentioned in this report. Opinions expressed are our current opinions as of the date appearing on this material only. While we endeavor to update on a reasonable basis the information discussed in this material, there may be regulatory, compliance, or other reasons that prevent us from doing so.

This report is not directed to or intended for display, downloading, printing, reproducing or for distribution to or use by any person in any locality, state and country or other jurisdiction where such distribution, publication or use would be contrary to the law or regulation or would subject to BP EQUITIES Pvt. Ltd or any of its affiliates to any registration or licensing requirement within such jurisdiction.

Corporate Office:

4th floor,
Rustom Bldg,
29, Veer Nariman Road, Fort,
Mumbai-400001
Phone- +91 22 6159 6464
Fax-+91 22 6159 6160
Website- www.bpwealth.com

Registered Office:

24/26, 1st Floor, Cama Building,
Dalal street, Fort,
Mumbai-400001

BP Equities Pvt. Ltd.
CIN No: U67120MH1997PTC107392