

Technical Trend

INTRADAY TRADER'S PICKS

Sr.No.	STOCK	CLOSE	S1	S2	S3	R1	R2	R3	RECOMMENDATION
1	GLENMARK	656.65	650	642	634	668	676	684	BUY ABOVE 659
2	KIRIINDUS	271.75	269	265	261	279	283	287	BUY ABOVE 274
3	RKFORGE	535.55	528	521	514	550	557	564	BUY ABOVE 539
4	SAIL	59.60	58.8	57.6	56.4	61.2	62.4	63.6	BUY ABOVE 60
5	TCI	340.75	338	334	330	346	350	354	BUY ABOVE 342

Technical Trend

DERIVATIVES

INDICES SNAPSHOT

SCRIPS	CP AS ON 04/07/2017	CP AS ON 05/07/2017	Change (%)	OI AS ON 04/07/2017	OI AS ON 05/07/2017	Change (%)
BANKNIFTY	23256.05	23400.55	0.62	2494640	2551000	2.26
NIFTY	9624.05	9645.3	0.22	21561000	21882150	1.49
NIFTYIT	10209	10158	-0.50	40900	43600	6.60

Derivative Highlights

- ⇒ Nifty Future closed with a premium of 11 points v/s a premium of 7 points in the previous session.
- ⇒ Nifty Future Open Interest increased by 1.49%. BankNifty Future Open Interest decreased by 2.26%.
- ⇒ Nifty PCR - OI increased from 1.21 to 1.26, Nifty PCR - Vol increased from 1.11 to 1.17
- ⇒ FII Sold Rs 227.57 crore while DII Bought Rs. 75.36 crore in the Cash Segment. FII Bought Rs. 164.08 crore in Index Futures and Bought Rs. 456.95 crore in index options, while in Future they Bought Rs. 765.34 crore and Bought Rs 35.81 crore in stock options
- ⇒ Among Index Option space, Highest Open Interest concentration was seen in 9500 & 9600 Strike price among the PE options. Where as among CE Options Highest Open Interest Concentration was seen in 9700 & 9600 Strike price.
- ⇒ Highest Open Interest Build Up among the PE options was seen in 9500 & 9600 Strike price. Among CE options highest build up was seen in 10000 & 9600 Strike price.

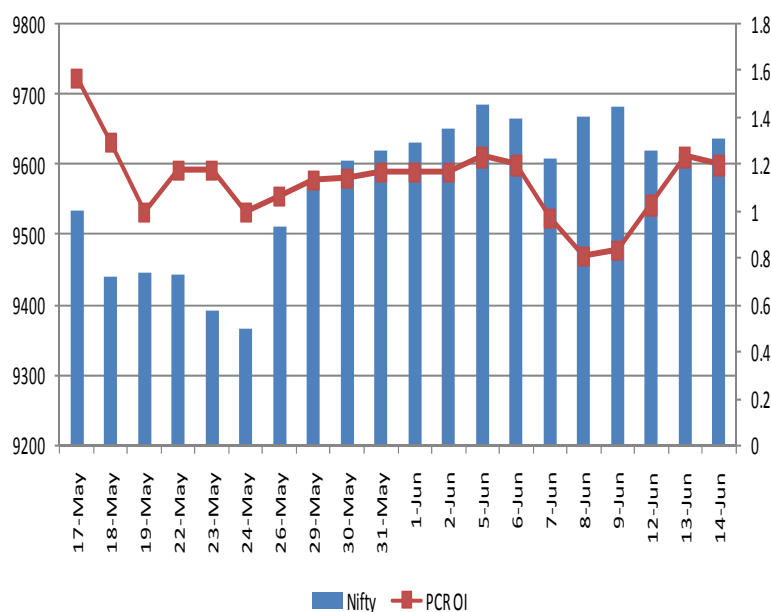
OI Concentration

PUT OPTION		CALL OPTION	
Strike Price	Open Interest	Strike Price	Open Interest
9500	6165075	9700	3758025
9400	5976375	9600	3494625
9600	4771050	10000	3487725
9300	4301850	9800	3363750
9200	2823300	9500	2564025

Highest Change in OI

PUT OPTION		CALL OPTION	
Strike Price	Change in OI	Strike Price	Change in OI
9500	1174200	10000	132825
9600	710850	9600	86250
9700	153750	9900	79500
9550	82425	9850	20775
9650	61650	9300	10125

Nifty Future Price V/S PCR-OI



Technical Trend

Stock Analysis

Long Build-up	Long Unwinding	Short Build-up	Short Covering
BEML	MFSL	BHARTIARTL	BEL
FORTIS	STAR	IDEA	GLENMARK
GSFC	WOCKPHARMA	INDIANB	HAVELLS
INDUSINDBK		PVR	JSWSTEEL
M&MFIN		SUNPHARMA	MINDTREE
RAYMOND		TATACOMM	TATAGLOBAL

STATISTICS

Highest Premium

SCRIPS	Premium %	Price change %
RCOM	0.92	4.06
MUTHOOTFIN	0.88	0.12
RPOWER	0.82	0.83
BALRAMCHIN	0.82	0.10
RDEL	0.82	0.41

Highest Discount

SCRIPS	Premium %	Price change %
KTKBANK	-2.16	1.83
BAJAJ-AUTO	-1.69	0.06
BANKINDIA	-1.31	0.47
RBLBANK	-1.14	0.47
MINDTREE	-1.10	1.38

TOP 5 VOLUME GAINER FOR THE SESSION

SCRIPS	CP AS ON 04/07/2017	CP AS ON 05/07/2017	Change (%)	Vol AS ON 04/07/2017	Vol AS ON 05/07/2017	Change (%)
LUPIN	1048.05	1088.7	3.88	4422	18496	318%
RAYMOND	769.55	817.9	6.28	1789	7229	304%
UJJIVAN	310.65	327.05	5.28	1175	4442	278%
IDFCBANK	56.3	62	10.12	3007	10488	249%
JISLJALEQS	101.95	107.75	5.69	1093	3384	210%

TOP 5 VOLUME LOSER FOR THE SESSION

SCRIPS	CP AS ON 04/07/2017	CP AS ON 05/07/2017	Change (%)	Vol AS ON 04/07/2017	Vol AS ON 05/07/2017	Change (%)
JUSTDIAL	360.8	365.2	1.22	6075	1662	-73%
HEROMOTOCO	3717.4	3729.95	0.34	5219	1510	-71%
ADANI PORTS	373.15	373.95	0.21	4925	1628	-67%
BATAINDIA	575.6	569.15	-1.12	5501	2201	-60%
JUBLFOOD	1021.9	1050.4	2.79	6173	2574	-58%

Technical Trend

TOP 10 OPEN INTEREST GAINER FOR THE SESSION

SCRIPS	CP AS ON 04/07/2017	CP AS ON 05/07/2017	Change (%)	OI AS ON 04/07/2017	OI AS ON 05/07/2017	Change (%)
TATACHEM	626.9	648.95	3.52	2830500	3625500	28.09
IBREALEST	198	210.85	6.49	33000000	40560000	22.91
ICICIPRULI	489.05	494.6	1.13	1036100	1267500	22.33
PVR	1431.65	1415.65	-1.12	377200	442800	17.39
NESTLEIND	6884.55	6958.95	1.08	71600	83900	17.18
INDIANB	284.45	282	-0.86	3406000	3826000	12.33
MANAPPURAM	98.05	97.9	-0.15	6432000	7224000	12.31
SREINFRA	113.4	113.65	0.22	2765000	3085000	11.57
UJJIVAN	310.65	327.05	5.28	7082400	7866000	11.06
CHENNPETRO	355.6	359.7	1.15	333000	369000	10.81

TOP 10 OPEN INTEREST LOSER FOR THE SESSION

SCRIPS	CP AS ON 04/07/2017	CP AS ON 05/07/2017	Change (%)	OI AS ON 04/07/2017	OI AS ON 05/07/2017	Change (%)
SRTRANSFIN	1051	1098.2	4.49	5442000	4948200	-9.07
HEXAWARE	242.35	240.7	-0.68	2775000	2622000	-5.51
TORNTPOWER	184.65	190.05	2.92	3306000	3135000	-5.17
MINDTREE	530.15	535.85	1.08	3512400	3332400	-5.12
JPASSOCIAT	19.65	21.1	7.38	187612000	179588000	-4.28
AMBUJACEM	249.8	254.2	1.76	12262500	11750000	-4.18
RELIANCE	1416.45	1434.7	1.29	11599000	11162000	-3.77
EICHERMOT	27973.85	28198.9	0.80	204000	196450	-3.70
DISHTV	80.2	81.2	1.25	21896000	21098000	-3.64
BATAINDIA	575.6	569.15	-1.12	4988500	4812500	-3.53

Technical Trend

Pivot Report– Nifty 50

Symbol	PClose	Support3	Support2	Support1	Pivot	Resist1	Resist2	Resist3
ACC	1594.5	1551.1	1561.6	1578.0	1588.5	1605.0	1615.5	1631.9
ADANIPTS	372.9	369.0	370.4	371.7	373.1	374.3	375.7	377.0
AMBUJACEM	253.3	243.8	246.2	249.7	252.1	255.7	258.1	261.6
ASIANPAINT	1126.7	1085.4	1097.0	1111.8	1123.4	1138.3	1149.9	1164.7
AUROPHARMA	678.3	655.0	662.2	670.3	677.5	685.6	692.8	700.9
AXISBANK	508.9	496.7	499.7	504.3	507.3	511.9	514.9	519.4
BAJAJ-AUTO	2716.2	2665.9	2681.1	2698.7	2713.9	2731.5	2746.7	2764.3
BANKBARODA	160.8	154.8	156.7	158.7	160.6	162.6	164.5	166.5
BHARTIARTL	376.3	368.5	370.9	373.6	376.1	378.8	381.2	383.9
BOSCHLTD	23723.2	23160.9	23318.1	23520.6	23677.8	23880.4	24037.6	24240.1
BPCL	662.1	650.3	653.3	657.7	660.7	665.1	668.1	672.5
CIPLA	545.9	536.0	538.7	542.3	545.1	548.7	551.4	555.0
COALINDIA	247.5	243.4	244.8	246.2	247.6	248.9	250.3	251.7
DRREDDY	2665.0	2587.1	2604.3	2634.6	2651.8	2682.1	2699.3	2729.6
EICHERMOT	28067.1	27462.7	27606.4	27836.7	27980.4	28210.7	28354.4	28584.7
GAIL	363.1	353.9	357.7	360.4	364.2	366.9	370.7	373.4
HCLTECH	837.5	828.6	831.8	834.7	837.9	840.8	844.0	846.9
HDFC	1629.1	1603.2	1612.7	1620.9	1630.5	1638.7	1648.2	1656.4
HDFCBANK	1648.8	1628.2	1636.6	1642.7	1651.1	1657.2	1665.6	1671.7
HEROMOTOCO	3709.8	3677.6	3687.2	3698.5	3708.1	3719.4	3729.0	3740.3
HINDALCO	198.8	194.6	195.9	197.4	198.7	200.1	201.4	202.9
HINDUNILVR	1096.7	1070.6	1076.3	1086.5	1092.3	1102.5	1108.2	1118.4
IBULHSGFIN	1060.9	1026.8	1035.6	1048.2	1057.0	1069.6	1078.4	1091.0
ICICIBANK	292.9	284.4	286.5	289.7	291.7	294.9	297.0	300.2
INDUSINDBK	1516.4	1482.8	1490.9	1503.6	1511.7	1524.5	1532.6	1545.3
INFRATEL	403.1	390.6	394.2	398.6	402.2	406.6	410.2	414.6
INFY	950.9	930.9	938.2	944.5	951.8	958.1	965.4	971.7
IOC	385.7	374.6	377.3	381.5	384.3	388.5	391.2	395.4
ITC	331.1	320.7	325.5	328.3	333.1	335.9	340.7	343.5
KOTAKBANK	959.9	945.7	949.9	954.9	959.1	964.1	968.3	973.3
LT	1695.3	1665.0	1672.6	1683.9	1691.5	1702.8	1710.4	1721.7
LUPIN	1084.0	988.3	1012.3	1048.1	1072.1	1107.9	1131.9	1167.7
M&M	1385.0	1332.0	1346.7	1365.9	1380.6	1399.8	1414.5	1433.7
MARUTI	7377.7	7279.8	7305.9	7341.8	7367.9	7403.8	7429.9	7465.8
NTPC	159.0	155.5	156.7	157.8	159.0	160.1	161.3	162.4
ONGC	162.8	157.1	158.5	160.7	162.1	164.2	165.6	167.8
POWERGRID	210.1	207.3	208.4	209.2	210.3	211.2	212.3	213.1
RELIANCE	1442.7	1405.2	1414.6	1428.6	1438.0	1452.1	1461.5	1475.5
SBIN	274.9	269.7	271.0	273.0	274.3	276.2	277.5	279.5
SUNPHARMA	550.7	534.2	541.5	546.1	553.3	557.9	565.2	569.8
TATAMOTORS	431.8	421.6	424.5	428.1	431.0	434.7	437.6	441.2
TATAMTRDVR	264.9	258.2	260.6	262.7	265.1	267.2	269.6	271.7
TATAPOWER	81.8	80.7	81.1	81.4	81.9	82.2	82.6	82.9
TATASTEEL	550.0	536.6	540.3	545.1	548.8	553.6	557.3	562.1
TCS	2356.0	2325.7	2335.3	2345.7	2355.3	2365.7	2375.3	2385.7
TECHM	377.2	370.4	373.3	375.2	378.1	380.0	382.9	384.8
ULTRACEMCO	4088.0	3960.4	3993.3	4040.6	4073.5	4120.9	4153.8	4201.1
VEDL	261.4	249.1	251.9	256.6	259.4	264.1	266.9	271.6
WIPRO	257.8	252.1	254.3	256.0	258.2	260.0	262.2	263.9
YESBANK	1506.0	1469.4	1478.2	1492.1	1500.9	1514.8	1523.6	1537.5
ZEEL	499.7	480.7	485.0	492.4	496.7	504.0	508.3	515.7



BP WEALTH

Technical Research Desk

Tel: +91 22 61596173

Institutional Sales Desk

Tel: +91 22 61596403/04/05

Disclaimer Appendix**Analyst s holding in the Stock : Nil****Analyst s Certification:**

We analysts and the authors of this report, hereby certify that all of the views expressed in this research report accurately reflect our personal views about any and all of the subject issuer s or securities. We also certify that no part of our compensation was, is, or will be directly or indirectly related to the specific recommendation s or view s in this report. Analysts aren't registered as research analysts by FINRA and might not be an associated person of the BP Equities Pvt. Ltd. Institutional Equities.

General Disclaimer

This report has been prepared by the research department of BP EQUITIES Pvt. Ltd, is for information purposes only. This report is not construed as an offer to sell or the solicitation of an offer to buy or sell any security in any jurisdiction where such an offer or solicitation would be illegal.

BP EQUITIES Pvt. Ltd have exercised due diligence in checking the correctness and authenticity of the information contained herein, so far as it relates to current and historical information, but do not guarantee its accuracy or completeness. The opinions expressed are our current opinions as of the date appearing in the material and may be subject to change from time to time. Prospective investors are cautioned that any forward looking statement are not predictions and are subject to change without prior notice.

Recipients of this material should rely on their own investigations and take their own professional advice. BP EQUITIES Pvt. Ltd or any of its affiliates or employees shall not be in any way responsible for any loss or damage that may arise to any person from any inadvertent error in the information contained in this report. BP EQUITIES Pvt. Ltd. or any of its affiliates or employees do not provide, at any time, any express or implied warranty of any kind, regarding any matter pertaining to this report, including without limitation the implied warranties of merchantability, fitness for a particular purpose, and non-infringement. The recipients of this report should rely on their own investigations.

BP EQUITIES Pvt. Ltd and/or its affiliates and/or employees may have interests/ positions, financial or otherwise in the securities mentioned in this report. Opinions expressed are our current opinions as of the date appearing on this material only. While we endeavor to update on a reasonable basis the information discussed in this material, there may be regulatory, compliance, or other reasons that prevent us from doing so.

This report is not directed to or intended for display, downloading, printing, reproducing or for distribution to or use by any person in any locality, state and country or other jurisdiction where such distribution, publication or use would be contrary to the law or regulation or would subject to BP EQUITIES Pvt. Ltd or any of its affiliates to any registration or licensing requirement within such jurisdiction.

Corporate Office:

4th floor,
Rustom Bldg,
29, Veer Nariman Road, Fort,
Mumbai-400001
Phone- +91 22 6159 6464
Fax-+91 22 6159 6160
Website- www.bpwealth.com

Registered Office:

24/26, 1st Floor, Cama Building,
Dalal street, Fort,
Mumbai-400001
BP Equities Pvt. Ltd.
CIN No: U67120MH1997PTC107392