

NIFTY FUT : RESISTANCE AT 9000



Source: Falcon, BP Equities Research

Nifty futures closed 0.06% lower at 8974. Index is hovering near the down sloping trend line which is drawn connecting the previous peaks, sustenance above this trend line is essential for the continuity of the up move. RSI has formed negative divergence with price which is a bearish signal. Going ahead index has resistance at 9000, for index to continue its up move it needs to surpass this level which if it does will open the way for 9050-9140 while support comes at 8900-8840.

Intraday Nifty Future

Resistance—9000/9050/9140

Support—8940/8900/8840

BANK NIFTY FUT : RESISTANCE AT 20970



Source: Falcon, BP Equities Research

Bank Nifty futures closed 0.08% lower at 20718. Index failed to violate the gap up created during its up move in the range of 20450-20297, this range is expected to act as immediate support for short term trend. Going ahead index has resistance at 20970, for index to continue its up move it needs to surpass this level while support comes at 20520-20370.

Intraday Bank Nifty Future

Resistance—20850/20970/21050

Support—20520/20370/20230

Technical Trend

INTRADAY TRADER'S PICKS

Sr.No.	STOCK	CLOSE	S1	S2	S3	R1	R2	R3	RECOMMENDATION
1	APOLLOHOSP	1260	1240	1220	1200	1290	1310	1330	BUY ABOVE 1265
2	BAJAJELEC	273.90	271	268	265	279	282	285	BUY ABOVE 275
3	CESC	818	804	794	784	824	832	840	SELL BELOW 814
4	COLPAL	927.30	919	910	901	941	950	959	BUY ABOVE 930
5	SOUTHBANK	20.60	20.3	20	19.7	21.3	21.6	21.9	BUY ABOVE 20.8

Technical Trend

DERIVATIVES

INDICES SNAPSHOT

SCRIPS	CP AS ON 06/03/2017	CP AS ON 07/03/2017	Change (%)	OI AS ON 06/03/2017	OI AS ON 07/03/2017	Change (%)
BANKNIFTY	20734.15	20718.05	-0.08	2498720	2449760	-1.96
NIFTY	8979.15	8974.1	-0.06	23548350	24824925	5.42
NIFTYIT	10808	10821	0.12	39900	49050	22.93

Derivative Highlights

- ⇒ Nifty Future closed with a premium of 27 points v/s a premium of 16 points in the previous session.
- ⇒ Nifty Future Open Interest increased by 5.42%. BankNifty Future Open Interest decreased by 1.96%
- ⇒ Nifty PCR - OI decreased from 0.98 to 0.97, Nifty PCR - Vol increased from 0.83 to 0.97
- ⇒ FII Bought 920.46 crore while DII Sold Rs. 1073.75 crore in the Cash Segment. FII Bought Rs. 66.26 crore in Index Futures and Sold Rs. 336.20 crore in index options, while in Stock Future they Sold Rs. 1764.21 crore and Bought Rs 76.29 crore in stock options.
- ⇒ Among Index Option space, Highest Open Interest concentration was seen in 8800 & 8700 Strike price among the PE options. Where as among CE Options Highest Open Interest Concentration was seen in 9000 & 9500 Strike price.
- ⇒ Highest Open Interest Build Up among the PE options was seen in 8600 & 8700 Strike price. Among CE options highest build up was seen in 9100 & 9000 Strike price.

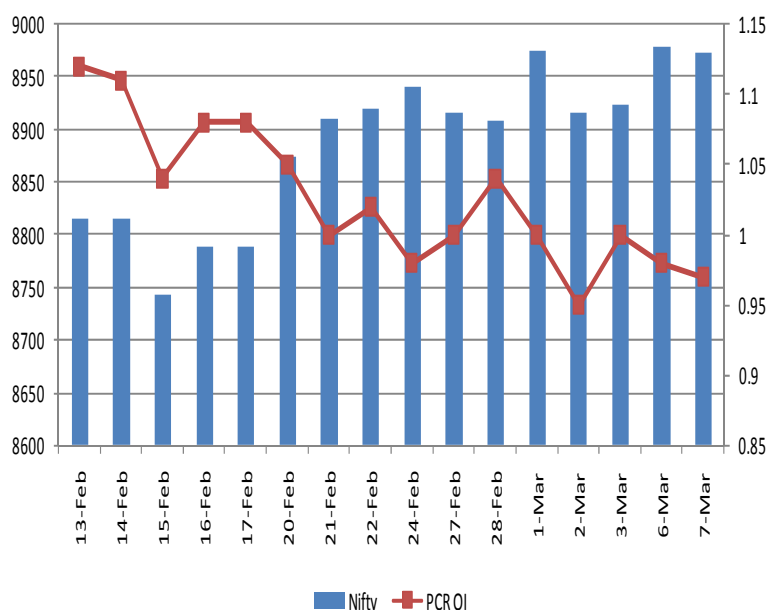
OI Concentration

PUT OPTION		CALL OPTION	
Strike Price	Open Interest	Strike Price	Open Interest
8800	4179600	9000	5439975
8700	3718200	9500	3993150
8500	3596925	9100	3801225
8900	3505350	9200	3394500
8400	3260175	9300	2959125

Highest Change in OI

PUT OPTION		CALL OPTION	
Strike Price	Change in OI	Strike Price	Change in OI
8600	201225	9100	280725
8700	130350	9000	273750
8900	118125	9200	188175
9000	107025	9500	180450
8500	67725	9600	58350

Nifty Future Price V/S PCR-OI



Technical Trend

Stock Analysis

Long Build-up	Long Unwinding	Short Build-up	Short Covering
BHARATFIN	CAIRN	AMARAJABAT	ADANIPORTS
DISHTV	DIVISLAB	BANKBARODA	BPCL
GAIL	KOTAKBANK	ENGINEERSIN	HINDPETRO
JUSTDIAL		HINDZINC	LICHSGFIN
KSCL		INFY	SRTRANSFIN
L&TFH		SAIL	TATACHEM

STATISTICS

Highest Premium

SCRIPS	Premium %	Price change %
GMRINFRA	0.92	0.31
RCOM	0.69	-3.60
JPASSOCIAT	0.66	-1.29
TATAELXSI	0.64	-0.68
CUMMINSIND	0.64	-0.89

Highest Discount

SCRIPS	Premium %	Price change %
COALINDIA	-5.59	-0.03
UNIONBANK	-2.09	0.92
NMDC	-2.04	0.51
CANBK	-1.33	-0.69
GAIL	-1.32	0.51

TOP 5 VOLUME GAINER FOR THE SESSION

SCRIPS	CP AS ON 06/03/2017	CP AS ON 07/03/2017	Change (%)	Vol AS ON 06/03/2017	Vol AS ON 07/03/2017	Change (%)
JUSTDIAL	540.2	582.65	7.86	2017	11770	484%
BHARATFIN	804	820.85	2.10	11137	34981	214%
KSCL	501.75	525.05	4.64	1603	4854	203%
ADANIPOWER	38.75	40.65	4.90	1326	3838	189%
UPL	688.3	705.7	2.53	1490	3501	135%

TOP 5 VOLUME LOSER FOR THE SESSION

SCRIPS	CP AS ON 06/03/2017	CP AS ON 07/03/2017	Change (%)	OI AS ON 06/03/2017	OI AS ON 07/03/2017	Change (%)
SINTEX	99.3	97.95	-1.36	3980	1016	-74%
BHARATFORG	1075.3	1053.5	-2.03	7779	2604	-67%
HCLTECH	859	859.95	0.11	4943	2000	-60%
EICHERMOT	23159.35	23309.45	0.65	3464	1480	-57%
HEROMOTOCO	3278	3261.9	-0.49	3854	1783	-54%

Technical Trend

TOP 10 OPEN INTEREST GAINER FOR THE SESSION

SCRIPS	CP AS ON 06/03/2017	CP AS ON 07/03/2017	Change (%)	OI AS ON 06/03/2017	OI AS ON 07/03/2017	Change (%)
GAIL	516.1	517.95	0.36	21112500	27513000	30.32
JUSTDIAL	540.2	582.65	7.86	2418000	2992800	23.77
KSCL	501.75	525.05	4.64	3492000	4170000	19.42
HINDZINC	307.95	298	-3.23	7123200	8236800	15.63
L&TFH	116.35	120.4	3.48	18081000	20349000	12.54
BHARATFIN	804	820.85	2.10	13533000	14916000	10.22
AMARAJABAT	852.35	846.1	-0.73	1614600	1777200	10.07
ENGINEERSIN	147.95	145.7	-1.52	22449000	24360000	8.51
WIPRO	493.3	495.15	0.38	5163600	5564400	7.76
CANBK	289.25	285.05	-1.45	14784696	15780828	6.74

TOP 10 OPEN INTEREST LOSER FOR THE SESSION

SCRIPS	CP AS ON 06/03/2017	CP AS ON 07/03/2017	Change (%)	OI AS ON 06/03/2017	OI AS ON 07/03/2017	Change (%)
TATACHEM	569.9	575.8	1.04	3819000	3492000	-8.56
HINDALCO	200.1	193.75	-3.17	45654000	42245000	-7.47
TVSMOTOR	425.7	425.2	-0.12	6476000	6110000	-5.65
BPCL	639.95	647.3	1.15	17361600	16392000	-5.58
SRTRANSFIN	936.75	958.05	2.27	3514200	3328800	-5.28
YESBANK	1465.55	1456.45	-0.62	7935900	7533400	-5.07
ONGC	194.85	197.45	1.33	41040000	38970000	-5.04
ICIL	169.8	170.65	0.50	3710000	3545500	-4.43
BAJAJ-AUTO	2884.05	2886.8	0.10	1167500	1116250	-4.39
COLPAL	913.05	929.15	1.76	1550500	1489600	-3.93

Technical Trend

Pivot Report– Nifty 50

Symbol	PClose	Support3	Support2	Support1	Pivot	Resist1	Resist2	Resist3
ACC	1387.4	1369.9	1376.5	1381.9	1388.5	1393.9	1400.5	1405.9
ADANIPORTS	308.3	296.2	299.1	303.7	306.5	311.1	314.0	318.6
AMBUJACEM	224.8	221.5	222.6	223.7	224.8	225.9	227.0	228.1
ASIANPAINT	1024.0	1006.7	1013.6	1018.8	1025.7	1030.9	1037.8	1043.0
AUOPHARMA	664.5	651.5	657.1	660.8	666.4	670.0	675.6	679.3
AXISBANK	511.8	496.8	503.0	507.4	513.7	518.1	524.3	528.7
BAJAJ-AUTO	2879.5	2846.5	2858.5	2869.0	2881.0	2891.5	2903.5	2914.0
BANKBARODA	160.4	157.0	158.5	159.4	160.9	161.8	163.3	164.2
BHARTIARTL	361.1	351.4	353.9	357.5	360.0	363.6	366.1	369.7
BHEL	160.2	153.4	156.4	158.3	161.3	163.2	166.2	168.1
BOSCHLTD	21364.5	21009.7	21154.9	21259.7	21404.8	21509.6	21654.8	21759.6
BPCL	645.9	630.3	634.6	640.2	644.5	650.1	654.4	660.0
CIPLA	588.1	579.9	583.0	585.5	588.6	591.1	594.2	596.7
COALINDIA	322.8	315.7	318.5	320.7	323.5	325.6	328.4	330.6
DRREDDY	2852.3	2807.3	2828.6	2840.5	2861.8	2873.7	2895.0	2906.9
EICHERMOT	23211.2	22908.8	23004.4	23107.8	23203.4	23306.8	23402.4	23505.8
GAIL	524.9	514.0	517.0	521.0	524.0	527.9	530.9	534.9
GRASIM	1006.1	979.0	987.4	996.8	1005.2	1014.6	1023.0	1032.4
HCLTECH	857.4	843.0	847.6	852.5	857.1	862.0	866.6	871.5
HDFC	1365.4	1349.0	1355.9	1360.6	1367.5	1372.3	1379.2	1383.9
HDFCBANK	1386.2	1367.8	1372.0	1379.1	1383.3	1390.4	1394.6	1401.7
HEROMOTOCO	3305.5	3243.8	3261.9	3283.7	3301.8	3323.6	3341.7	3363.5
HINDALCO	192.6	181.9	186.8	189.7	194.5	197.4	202.3	205.2
HINDUNILVR	872.1	861.7	864.9	868.5	871.7	875.3	878.5	882.1
ICICIBANK	276.0	270.0	272.5	274.3	276.8	278.5	281.0	282.8
IDEA	108.6	104.6	106.2	107.4	109.0	110.2	111.8	113.0
INDUSINDBK	1330.8	1289.6	1300.1	1315.4	1325.9	1341.2	1351.7	1367.0
INFRATEL	310.1	301.9	305.4	307.8	311.3	313.7	317.2	319.6
INFY	1019.8	1003.3	1009.0	1014.4	1020.1	1025.5	1031.2	1036.6
ITC	264.3	258.1	259.6	261.9	263.5	265.8	267.3	269.6
KOTAKBANK	817.0	806.7	810.3	813.7	817.3	820.7	824.3	827.7
LT	1486.4	1468.0	1473.7	1480.1	1485.8	1492.2	1497.9	1504.3
LUPIN	1457.3	1398.3	1419.2	1438.2	1459.1	1478.2	1499.1	1518.1
M&M	1320.3	1292.3	1302.5	1311.4	1321.6	1330.5	1340.7	1349.6
MARUTI	5888.5	5788.7	5834.8	5861.7	5907.8	5934.7	5980.8	6007.7
NTPC	157.4	153.2	155.1	156.3	158.2	159.3	161.2	162.4
ONGC	196.4	190.8	192.2	194.3	195.6	197.7	199.1	201.2
POWERGRID	194.6	191.0	192.3	193.4	194.7	195.8	197.1	198.2
RELIANCE	1305.0	1260.9	1278.5	1291.7	1309.4	1322.6	1340.2	1353.4
SBIN	267.8	261.3	263.9	265.8	268.4	270.3	272.9	274.8
SUNPHARMA	679.7	665.4	670.3	675.0	679.9	684.6	689.5	694.2
TATAMOTORS	467.6	453.9	460.0	463.8	469.8	473.6	479.7	483.5
TATAMTRDVR	282.7	274.1	277.0	279.9	282.8	285.7	288.6	291.5
TATAPOWER	83.0	81.5	82.1	82.6	83.2	83.6	84.2	84.7
TATASTEEL	482.0	463.8	472.2	477.1	485.6	490.5	498.9	503.8
TCS	2499.8	2451.6	2463.3	2481.6	2493.3	2511.5	2523.2	2541.5
TECHM	500.0	488.0	493.3	496.6	501.9	505.3	510.6	513.9
ULTRACEMCO	3786.9	3716.9	3746.0	3766.4	3795.5	3815.9	3845.0	3865.4
WIPRO	495.2	483.8	487.9	491.5	495.6	499.2	503.3	506.9
YESBANK	1448.2	1410.6	1424.9	1436.5	1450.8	1462.4	1476.7	1488.3
ZEEL	506.7	492.4	497.5	502.1	507.2	511.8	516.9	521.5



BP WEALTH

Technical Research Desk

Tel: +91 22 61596173

Institutional Sales Desk

Tel: +91 22 61596403/04/05

Disclaimer Appendix**Analyst s holding in the Stock : Nil****Analyst s Certification:**

We analysts and the authors of this report, hereby certify that all of the views expressed in this research report accurately reflect our personal views about any and all of the subject issuer s or securities. We also certify that no part of our compensation was, is, or will be directly or indirectly related to the specific recommendation s or view s in this report. Analysts aren't registered as research analysts by FINRA and might not be an associated person of the BP Equities Pvt. Ltd. Institutional Equities.

General Disclaimer

This report has been prepared by the research department of BP EQUITIES Pvt. Ltd, is for information purposes only. This report is not construed as an offer to sell or the solicitation of an offer to buy or sell any security in any jurisdiction where such an offer or solicitation would be illegal.

BP EQUITIES Pvt. Ltd have exercised due diligence in checking the correctness and authenticity of the information contained herein, so far as it relates to current and historical information, but do not guarantee its accuracy or completeness. The opinions expressed are our current opinions as of the date appearing in the material and may be subject to change from time to time. Prospective investors are cautioned that any forward looking statement are not predictions and are subject to change without prior notice.

Recipients of this material should rely on their own investigations and take their own professional advice. BP EQUITIES Pvt. Ltd or any of its affiliates or employees shall not be in any way responsible for any loss or damage that may arise to any person from any inadvertent error in the information contained in this report. BP EQUITIES Pvt. Ltd. or any of its affiliates or employees do not provide, at any time, any express or implied warranty of any kind, regarding any matter pertaining to this report, including without limitation the implied warranties of merchantability, fitness for a particular purpose, and non-infringement. The recipients of this report should rely on their own investigations.

BP EQUITIES Pvt. Ltd and/or its affiliates and/or employees may have interests/ positions, financial or otherwise in the securities mentioned in this report. Opinions expressed are our current opinions as of the date appearing on this material only. While we endeavor to update on a reasonable basis the information discussed in this material, there may be regulatory, compliance, or other reasons that prevent us from doing so.

This report is not directed to or intended for display, downloading, printing, reproducing or for distribution to or use by any person in any locality, state and country or other jurisdiction where such distribution, publication or use would be contrary to the law or regulation or would subject to BP EQUITIES Pvt. Ltd or any of its affiliates to any registration or licensing requirement within such jurisdiction.

Corporate Office:

4th floor,
Rustom Bldg,
29, Veer Nariman Road, Fort,
Mumbai-400001
Phone- +91 22 6159 6464
Fax-+91 22 6159 6160
Website- www.bpwealth.com

Registered Office:

24/26, 1st Floor, Cama Building,
Dalal street, Fort,
Mumbai-400001

BP Equities Pvt. Ltd.
CIN No: U67120MH1997PTC107392