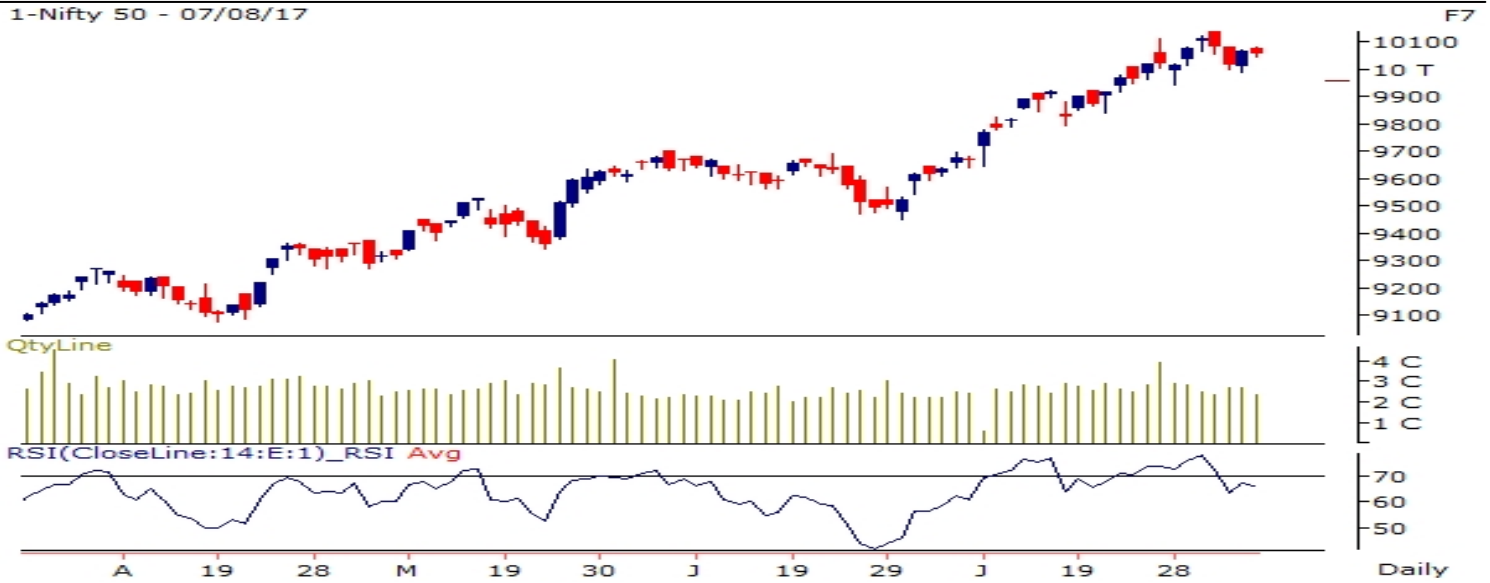


NIFTY FUT : IMMEDIATE RESISTANCE AT 10130



Source: Falcon, BP Equities Research

Nifty futures closed lower by 0.09% at 10057. Index opened gap up but failed to sustain the gains and closed flat. Index has earlier formed bearish engulfing a bearish reversal candlestick pattern which suggests the recent peak to act as strong resistance for short term trend. Index is moving in an up sloping channel and is consolidating around the upper trend line, for index to continue its up move it needs to sustain above this trend line. Going ahead index has immediate resistance at 10130, for index to continue its up move it needs to surpass this level which if it does will open the way for 10200-10250 while support comes at 10000/9925.

Intraday Nifty Future Resistance—10130/10160/10200 Support—10030/10000/9930

BANK NIFTY FUT : IMMEDIATE RESISTANCE AT 25050



Source: Falcon, BP Equities Research

Bank Nifty futures closed 0.32% higher at 24906. Index opened gap up and continued its up move. Index has earlier formed Hanging man a bearish reversal candlestick pattern which suggests the recent peak to act as strong resistance for short term. Going ahead index has immediate resistance at 25050, for index to continue its up move it needs to sustain above this level which if it does will open the way for 25180-25280.

Intraday Bank Nifty Future Resistance—25050/25180/25280 Support—24840/24740/24580

Technical Trend

INTRADAY TRADER'S PICKS

Sr.No.	STOCK	CLOSE	S1	S2	S3	R1	R2	R3	RECOMMENDATION
1	ALKEM	1875	1865	1845	1925	1905	1925	1945	BUY ABOVE 1885
2	HERITGFOOD	1297	1290	1275	1260	1330	1345	1360	BUY ABOVE 1310
3	JINDALPOLY	411.40	407	401	395	419	425	431	BUY ABOVE 413
4	MUTHOOTFIN	474.35	469	463	457	485	491	497	BUY ABOVE 477
5	TATAELXSI	1733	1720	1700	1680	1760	1780	1800	BUY ABOVE 1740

Technical Trend

DERIVATIVES

INDICES SNAPSHOT

SCRIPS	CP AS ON 04/08/2017	CP AS ON 07/08/2017	Change (%)	OI AS ON 04/08/2017	OI AS ON 07/08/2017	Change (%)
BANKNIFTY	24951.15	24998.05	0.19	2278560	2326480	2.10
NIFTY	10108.55	10091.75	-0.17	22720125	22974225	1.12
NIFTYIT	10803	10734	-0.64	28900	28950	0.17

Derivative Highlights

- ⇒ Nifty Future closed with a premium 35of points v/s a premium of 43 points in the previous session
- ⇒ Nifty Future Open Interest increased by 1.12%. BankNifty Future Open Interest increased by 2.10%.
- ⇒ Nifty PCR - OI decreased from 1.27 to 1.25, Nifty PCR - Vol increased from 1.01 to 1.13
- ⇒ FII Sold Rs 199.21 crore while DII Bought Rs. 308.15 crore in the Cash Segment. FII Sold Rs. 772.78 crore in Index Futures and Bought Rs.109.41 crore in index options, while in Future they Sold Rs. 376.32 crore and Bought Rs 106.48 crore in stock options¹
- ⇒ Among Index Option space, Highest Open Interest concentration was seen in 10000 & 9800 Strike price among the PE options. Where as among CE Options Highest Open Interest Concentration was seen in 10200 & 10100 Strike price.
- ⇒ Highest Open Interest Build Up among the PE options was seen in 9700 & 10100 Strike price. Among CE options highest build up was seen in 10200 & 10100 Strike price.

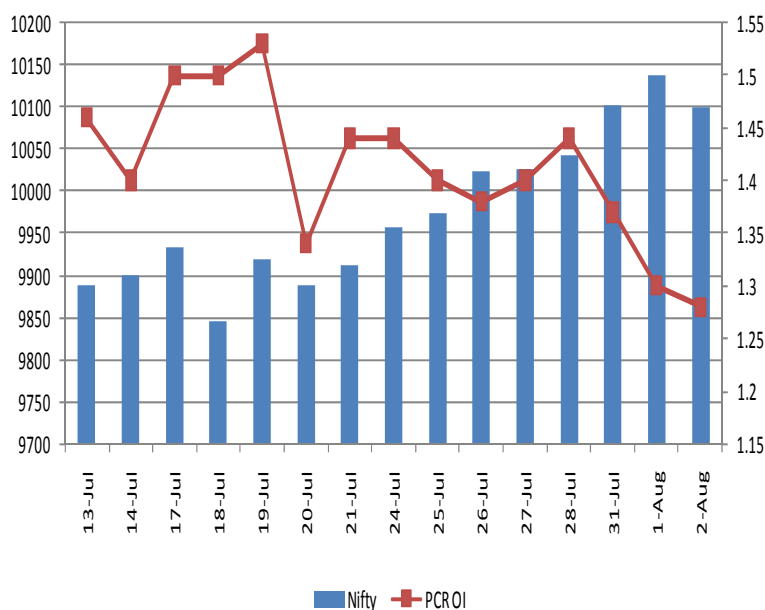
OI Concentration

PUT OPTION		CALL OPTION	
Strike Price	Open Interest	Strike Price	Open Interest
10000	5321925	10200	3958575
9800	4204425	10100	3924825
9900	4177125	10500	3885900
9700	3824625	10300	3565200
9500	3356625	10400	3156225

Highest Change in OI

PUT OPTION		CALL OPTION	
Strike Price	Change in OI	Strike Price	Change in OI
9700	339075	10200	697425
10100	256200	10100	350775
9900	153750	10400	101475
9800	135450	10150	92400
10000	115800	10500	61500

Nifty Future Price V/S PCR-OI



Technical Trend

Stock Analysis

Long Build-up	Long Unwinding	Short Build-up	Short Covering
ARVIND	KSCL	CANFINHOME	AMARAJABAT
BRITANNIA	OFSS	DISHTV	HINDALCO
INFIBEAM		HDFC	IRB
JUSTDIAL		INFRATEL	MARUTI
MOTHERSUMI		TATAMOTORS	RELCAPITAL
TATASTEEL		ULTRACEMCO	TORNTPOWER

STATISTICS

Highest Premium

SCRIPS	Premium %	Price change %
HDIL	1.23	-8.58
INFIBEAM	0.84	3.01
GMRINFRA	0.81	5.10
IDBI	0.79	0.26
IDFCBANK	0.78	0.44

Highest Discount

SCRIPS	Premium %	Price change %
MRPL	-3.93	1.81
CHENNPETRO	-3.52	3.58
INDIGO	-2.13	0.91
GSFC	-1.31	-7.23
KPIT	-1.09	-0.64

TOP 5 VOLUME GAINER FOR THE SESSION

SCRIPS	CP AS ON 04/08/2017	CP AS ON 07/08/2017	Change (%)	Vol AS ON 04/08/2017	Vol AS ON 07/08/2017	Change (%)
ARVIND	366.6	391.3	6.74	2082	9557	359%
SYNDIBANK	69.95	72.15	3.15	1010	2728	170%
SUNTV	790.05	758.95	-3.94	2014	4897	143%
AMARAJABAT	808.85	824.2	1.90	2359	5326	126%
INFRATEL	407.7	398.7	-2.21	1495	3219	115%

TOP 5 VOLUME LOSER FOR THE SESSION

SCRIPS	CP AS ON 04/08/2017	CP AS ON 07/08/2017	Change (%)	Vol AS ON 04/08/2017	Vol AS ON 07/08/2017	Change (%)
TITAN	613.25	616.4	0.51	19034	3666	-81%
BIOCON	359.4	356.7	-0.75	8965	2204	-75%
M&MFIN	424.65	425.2	0.13	8688	2363	-73%
UJJIVAN	322.65	331.75	2.82	15796	4301	-73%
DIVISLAB	681.8	684.25	0.36	4428	1232	-72%

Technical Trend

TOP 10 OPEN INTEREST GAINER FOR THE SESSION

SCRIPS	CP AS ON 04/08/2017	CP AS ON 07/08/2017	Change (%)	OI AS ON 04/08/2017	OI AS ON 07/08/2017	Change (%)
REPCOHOME	770.35	704.65	-8.53	381500	670600	75.78
APOLLOTYRE	262.65	287	9.27	10995000	14634000	33.10
BRITANNIA	3927.35	4134.2	5.27	323200	421200	30.32
ARVIND	366.6	391.3	6.74	5768000	7066000	22.50
INFRATEL	407.7	398.7	-2.21	9443500	10718500	13.50
MANAPPURAM	103.55	106.8	3.14	25818000	29280000	13.41
SUNTV	790.05	758.95	-3.94	6804000	7628000	12.11
SREINFRA	120.3	120.8	0.42	8610000	9450000	9.76
JETAIRWAYS	613.85	637.75	3.89	3868800	4220400	9.09
DISHTV	79.95	77.4	-3.19	16758000	18165000	8.40

TOP 10 OPEN INTEREST LOSER FOR THE SESSION

SCRIPS	CP AS ON 04/08/2017	CP AS ON 07/08/2017	Change (%)	OI AS ON 04/08/2017	OI AS ON 07/08/2017	Change (%)
CHOLAFIN	1185.1	1207.3	1.87	404500	350000	-13.47
PCJEWELLER	260.95	272.25	4.33	6024000	5385000	-10.61
PIDILITIND	804.95	809.55	0.57	1226000	1116000	-8.97
HDIL	76.15	70.1	-7.94	39240000	36352000	-7.36
DALMIABHA	2578.15	2670	3.56	799800	746100	-6.71
BATAINDIA	633.5	642.5	1.42	3707000	3462800	-6.59
M&MFIN	424.65	425.2	0.13	9290000	8737500	-5.95
CEATLTD	1744.3	1820.5	4.37	1850800	1743700	-5.79
TORNTPOWER	189.35	202.65	7.02	7329000	6906000	-5.77
HAVELLS	493.9	497.55	0.74	3148000	2968000	-5.72

Technical Trend

Pivot Report– Nifty 50

Symbol	PClose	Support3	Support2	Support1	Pivot	Resist1	Resist2	Resist3
ACC	1817.4	1767.3	1781.2	1799.3	1813.1	1831.2	1845.1	1863.2
ADANIPTS	414.3	395.0	401.8	408.0	414.8	421.0	427.8	434.0
AMBUJACEM	279.5	265.2	268.9	274.2	277.8	283.1	286.8	292.1
ASIANPAINT	1149.7	1122.8	1132.6	1141.1	1150.9	1159.5	1169.3	1177.8
AUOPHARMA	724.5	706.1	713.9	719.2	727.0	732.3	740.1	745.4
AXISBANK	505.8	495.0	499.5	502.7	507.2	510.4	514.9	518.1
BAJAJ-AUTO	2889.3	2835.4	2851.9	2870.6	2887.1	2905.8	2922.3	2941.0
BANKBARODA	160.1	157.0	158.1	159.1	160.2	161.2	162.3	163.3
BHARTIARTL	417.5	408.9	412.7	415.1	418.8	421.2	425.0	427.4
BOSCHLTD	24353.9	23826.3	24063.7	24208.8	24446.1	24591.2	24828.6	24973.7
BPCL	527.7	504.1	509.3	518.5	523.8	533.0	538.2	547.4
CIPLA	566.5	537.9	545.4	556.0	563.5	574.1	581.6	592.2
COALINDIA	251.5	244.4	246.5	249.0	251.1	253.6	255.7	258.2
DRREDDY	2207.0	2128.6	2164.3	2185.6	2221.3	2242.6	2278.3	2299.6
EICHERMOT	31969.9	31144.2	31397.8	31683.8	31937.4	32223.5	32477.1	32763.1
GAIL	381.6	373.2	376.2	378.9	381.9	384.6	387.6	390.3
HCLTECH	886.0	866.7	874.1	880.0	887.4	893.3	900.7	906.6
HDFC	1725.4	1679.8	1699.9	1712.7	1732.8	1745.6	1765.7	1778.5
HDFCBANK	1788.6	1772.1	1778.6	1783.6	1790.0	1795.0	1801.5	1806.5
HEROMOTOCO	3952.7	3823.0	3875.4	3914.1	3966.5	4005.1	4057.5	4096.2
HINDALCO	227.7	220.3	222.2	224.9	226.8	229.5	231.4	234.1
HINDUNILVR	1186.3	1152.3	1161.8	1174.1	1183.6	1195.8	1205.3	1217.6
IBULHSGFIN	1199.5	1170.2	1182.9	1191.2	1203.9	1212.2	1224.9	1233.2
ICICIBANK	300.2	290.6	293.7	296.9	300.0	303.2	306.3	309.5
INDUSINDBK	1650.5	1613.8	1630.7	1640.6	1657.6	1667.5	1684.4	1694.3
INFRATEL	397.9	379.9	387.8	392.8	400.7	405.7	413.6	418.6
INFY	968.3	943.3	954.5	961.4	972.6	979.4	990.6	997.5
IOC	431.2	400.3	407.4	419.3	426.4	438.3	445.4	457.3
ITC	279.9	275.0	277.2	278.5	280.8	282.1	284.3	285.6
KOTAKBANK	997.9	986.5	990.4	994.2	998.1	1001.8	1005.7	1009.5
LT	1180.0	1160.5	1166.3	1173.1	1178.9	1185.7	1191.5	1198.3
LUPIN	985.1	952.3	966.4	975.7	989.9	999.2	1013.3	1022.6
M&M	1400.8	1335.4	1360.2	1380.5	1405.2	1425.5	1450.3	1470.6
MARUTI	7838.7	7654.3	7712.7	7775.7	7834.0	7897.0	7955.4	8018.4
NTPC	174.5	167.1	170.5	172.5	175.8	177.8	181.2	183.2
ONGC	165.9	163.0	164.1	165.0	166.0	166.9	168.0	168.9
POWERGRID	226.0	220.6	221.8	223.9	225.1	227.1	228.3	230.4
RELIANCE	1616.4	1589.7	1601.1	1608.7	1620.2	1627.8	1639.2	1646.8
SBIN	311.2	300.3	302.7	307.0	309.4	313.6	316.0	320.3
SUNPHARMA	505.6	493.3	498.8	502.2	507.7	511.1	516.6	520.0
TATAMOTORS	430.0	409.1	417.2	423.6	431.7	438.1	446.2	452.6
TATAMTRDVR	250.4	239.7	244.5	247.4	252.2	255.2	260.0	262.9
TATAPOWER	80.0	78.6	79.2	79.6	80.3	80.7	81.3	81.7
TATASTEEL	600.1	571.2	577.6	588.8	595.2	606.5	612.9	624.1
TCS	2503.5	2444.3	2462.8	2483.1	2501.6	2521.9	2540.4	2560.7
TECHM	406.4	391.4	397.8	402.1	408.5	412.8	419.2	423.5
ULTRACEMCO	4050.0	3950.9	3996.6	4023.3	4069.0	4095.7	4141.4	4168.1
VEDL	287.7	278.1	281.9	284.8	288.7	291.6	295.4	298.3
WIPRO	287.8	283.8	285.5	286.6	288.3	289.4	291.1	292.2
YESBANK	1799.9	1766.8	1780.3	1790.1	1803.5	1813.3	1826.8	1836.6
ZEEL	540.7	533.3	536.6	538.6	542.0	544.0	547.3	549.3



BP WEALTH

Technical Research Desk

Tel: +91 22 61596173

Institutional Sales Desk

Tel: +91 22 61596403/04/05

Disclaimer Appendix

Analyst s holding in the Stock : Nil

Analyst s Certification:

We analysts and the authors of this report, hereby certify that all of the views expressed in this research report accurately reflect our personal views about any and all of the subject issuer s or securities. We also certify that no part of our compensation was, is, or will be directly or indirectly related to the specific recommendation s or view s in this report. Analysts aren't registered as research analysts by FINRA and might not be an associated person of the BP Equities Pvt. Ltd. Institutional Equities.

General Disclaimer

This report has been prepared by the research department of BP EQUITIES Pvt. Ltd, is for information purposes only. This report is not construed as an offer to sell or the solicitation of an offer to buy or sell any security in any jurisdiction where such an offer or solicitation would be illegal.

BP EQUITIES Pvt. Ltd have exercised due diligence in checking the correctness and authenticity of the information contained herein, so far as it relates to current and historical information, but do not guarantee its accuracy or completeness. The opinions expressed are our current opinions as of the date appearing in the material and may be subject to change from time to time. Prospective investors are cautioned that any forward looking statement are not predictions and are subject to change without prior notice.

Recipients of this material should rely on their own investigations and take their own professional advice. BP EQUITIES Pvt. Ltd or any of its affiliates or employees shall not be in any way responsible for any loss or damage that may arise to any person from any inadvertent error in the information contained in this report. BP EQUITIES Pvt. Ltd. or any of its affiliates or employees do not provide, at any time, any express or implied warranty of any kind, regarding any matter pertaining to this report, including without limitation the implied warranties of merchantability, fitness for a particular purpose, and non-infringement. The recipients of this report should rely on their own investigations.

BP EQUITIES Pvt. Ltd and/or its affiliates and/or employees may have interests/ positions, financial or otherwise in the securities mentioned in this report. Opinions expressed are our current opinions as of the date appearing on this material only. While we endeavor to update on a reasonable basis the information discussed in this material, there may be regulatory, compliance, or other reasons that prevent us from doing so.

This report is not directed to or intended for display, downloading, printing, reproducing or for distribution to or use by any person in any locality, state and country or other jurisdiction where such distribution, publication or use would be contrary to the law or regulation or would subject to BP EQUITIES Pvt. Ltd or any of its affiliates to any registration or licensing requirement within such jurisdiction.

Corporate Office:

4th floor,
Rustom Bldg,
29, Veer Nariman Road, Fort,
Mumbai-400001
Phone- +91 22 6159 6464
Fax-+91 22 6159 6160
Website- www.bpwealth.com

Registered Office:

24/26, 1st Floor, Cama Building,
Dalal street, Fort,
Mumbai-400001
BP Equities Pvt. Ltd.
CIN No: U67120MH1997PTC107392