

NIFTY FUT : RESISTANCE AT 9400



Nifty futures closed 0.07% higher at 9350. Index continued to consolidate around upper trend line of the up sloping channel, for index to continue its up move it needs to sustain above this trend line. RSI has earlier formed positive reversal and is now consolidating around down sloping trend line, a sustenance above the trend line will make the index resume its previous up move. Going ahead for index to continue its up move it needs to surpass 9400 which if it does will open the way for 9480-9580 while support comes at 9300-9250.

Intraday Nifty Future Resistance—9370/9400/9480 Support—9300/9250/9200

BANK NIFTY FUT : CONTINUE UPMOVE TOWARDS 22850-23100



Bank Nifty futures closed 0.10% lower at 22763. Index has given upward breakout form the up sloping channel which is a bullish signal for short term trend. RSI has surpassed a down sloping trend line which is a bullish signal for short term trend. Going ahead index has immediate support at 22500, till it maintains above this range it is expected to continue its up move initially towards 22850-23100 while support past 22500 comes at 22150-21850.

Intraday Bank Nifty Future Resistance—22850/23100/23400 Support—22650/22500/22150

Technical Trend

INTRADAY TRADER'S PICKS

Sr.No.	STOCK	CLOSE	S1	S2	S3	R1	R2	R3	RECOMMENDATION
1	GABRIEL	127.05	125	122	119	131	134	137	BUY ABOVE 128
2	GATI	134.10	132	129	126	138	141	144	BUY ABOVE 135
3	GOKEX	83.45	82	80	78	86	88	90	BUY ABOVE 84
4	JKLAKSHMI	501.05	495	485	480	515	525	530	BUY ABOVE 505
5	NELCO	90.25	89	87.5	86	93	94.5	96	BUY ABOVE 91

Technical Trend

DERIVATIVES

INDICES SNAPSHOT

SCRIPS	CP AS ON 08/05/2017	CP AS ON 09/05/2017	Change (%)	OI AS ON 08/05/2017	OI AS ON 09/05/2017	Change (%)
BANKNIFTY	22785.35	22762.85	-0.10	3807960	3756920	-1.34
NIFTY	9343.6	9350.4	0.07	20457675	20818050	1.76
NIFTYIT	10239	10300	0.60	47300	45750	-3.28

Derivative Highlights

- ⇒ Nifty Future closed with a premium of 33 points v/s a premium of 30 points in the previous session.
- ⇒ Nifty Future Open Interest increased by 1.76%. BankNifty Future Open Interest decreased by 1.34%
- ⇒ Nifty PCR - OI increased from 1.02 to 1.03, Nifty PCR - Vol decreased from 1.11 to 1.09
- ⇒ FII Bought 332.87 crore while DII Bought Rs. 16.92 crore in the Cash Segment. FII Sold Rs. 1083.42 crore in Index Futures and Sold Rs. 87.55 crore in index options, while in Stock Future they Sold Rs. 593.90 crore and Bought Rs 36.62 crore in stock options.
- ⇒ Among Index Option space, Highest Open Interest concentration was seen in 9300 & 9200 Strike price among the PE options. Where as among CE Options Highest Open Interest Concentration was seen in 9400 & 9500 Strike price.
- ⇒ Highest Open Interest Build Up among the PE options was seen in 9300 & 9200 Strike price. Among CE options highest build up was seen in 9500 & 9400 Strike price.

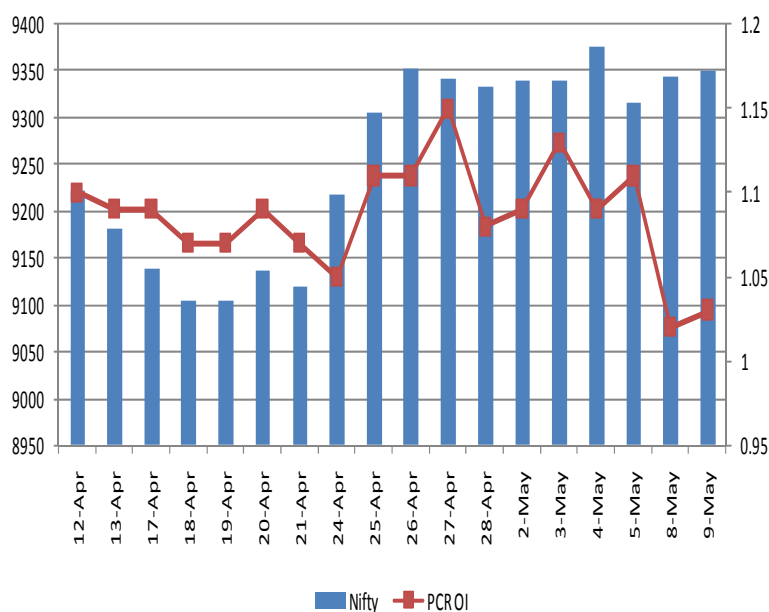
OI Concentration

PUT OPTION		CALL OPTION	
Strike Price	Open Interest	Strike Price	Open Interest
9300	6067275	9400	5826675
9200	5176050	9500	5668800
9100	4641525	9300	3372375
9000	4615350	9600	3270150
8900	2430450	9700	1568175

Highest Change in OI

PUT OPTION		CALL OPTION	
Strike Price	Change in OI	Strike Price	Change in OI
9300	726600	9500	170175
9200	345450	9400	79650
9100	108450	9650	50475
9500	95625	9550	49650
9350	85350	9800	35025

Nifty Future Price V/S PCR-OI



Technical Trend

Stock Analysis

Long Build-up	Long Unwinding	Short Build-up	Short Covering
CENTURYTEX	ABIRLANUVO	AUROPHARMA	AXISBANK
GODREJCP	BANKINDIA	BEML	BPCL
GODREJIND	HEROMOTOCO	COALINDIA	DALMIABHA
HDIL	IBULHSGFIN	HDFC	HCLTECH
JSWENERGY	JUBLFOOD	LICHSGFIN	JETAIRWAYS
RELCAPITAL	M&MFIN	LUPIN	RECLTD

STATISTICS

Highest Premium

SCRIPS	Premium %	Price change %
JPASSOCIAT	0.76	
GSFC	0.66	
JSWENERGY	0.65	
PEL	0.65	
SRF	0.65	

Highest Discount

SCRIPS	Premium %	Price change %
CEATLTD	-5.09	
INFIBEAM	-1.96	
CASTROLIND	-0.57	
CANBK	-0.54	
HCLTECH	-0.51	

TOP 5 VOLUME GAINER FOR THE SESSION

SCRIPS	CP AS ON 08/05/2017	CP AS ON 09/05/2017	Change (%)	Vol AS ON 08/05/2017	Vol AS ON 09/05/2017	Change (%)
INDIGO	1124.65	1146.35	1.93	1001	3773	277%
SINTEX	113	116.5	3.10	1030	3007	192%
SYNDIBANK	91.35	92	0.71	3782	10559	179%
IDBI	79.4	82.15	3.46	1803	5015	178%
VOLTAS	425.35	430.25	1.15	1711	3901	128%

TOP 5 VOLUME LOSER FOR THE SESSION

SCRIPS	CP AS ON 08/05/2017	CP AS ON 09/05/2017	Change (%)	Vol AS ON 08/05/2017	Vol AS ON 09/05/2017	Change (%)
AMBUJACEM	261.7	258.3	-1.30	18498	2775	-85%
ACC	1718.45	1704.35	-0.82	7341	1728	-76%
ESCORTS	604.2	601.8	-0.40	4429	1141	-74%
EQUITAS	161.55	165.15	2.23	4713	1500	-68%
IRB	256.55	259.65	1.21	2812	1036	-63%

Technical Trend

TOP 10 OPEN INTEREST GAINER FOR THE SESSION

SCRIPS	CP AS ON 08/05/2017	CP AS ON 09/05/2017	Change (%)	OI AS ON 08/05/2017	OI AS ON 09/05/2017	Change (%)
GODREJCP	1762.55	1927.7	9.37	384400	621600	61.71
BALRAMCHIN	158.5	160.6	1.32	6142500	8169000	32.99
JSWENERGY	67	69.35	3.51	53312500	66920500	25.52
CHOLAFIN	1096.55	1082.05	-1.32	136000	163000	19.85
INDIGO	1124.65	1146.35	1.93	1600200	1916400	19.76
LICHSGFIN	707.5	686.35	-2.99	5205200	6121500	17.60
HDIL	93.2	97.5	4.61	29864000	34920000	16.93
SYNDIBANK	91.35	92	0.71	21258000	24228000	13.97
SIEMENS	1357.35	1451.45	6.93	846000	959000	13.36
CAPF	756.6	793.65	4.90	958400	1083200	13.02

TOP 10 OPEN INTEREST LOSER FOR THE SESSION

SCRIPS	CP AS ON 08/05/2017	CP AS ON 09/05/2017	Change (%)	OI AS ON 08/05/2017	OI AS ON 09/05/2017	Change (%)
NIITTECH	491.7	496.95	1.07	870000	715500	-17.76
HEXAWARE	251	250.95	-0.02	2760000	2502000	-9.35
ADANIENT	114.95	118.05	2.70	28904000	27008000	-6.56
ESCORTS	604.2	601.8	-0.40	1272700	1190200	-6.48
MUTHOOTFIN	395.35	396.8	0.37	1780500	1684500	-5.39
UBL	786.3	798.05	1.49	835100	791000	-5.28
DALMIABHA	2346.25	2411.2	2.77	1057500	1002600	-5.19
MRPL	136.05	133.85	-1.62	3303000	3150000	-4.63
APOLLOTYRE	241.55	235.8	-2.38	13404000	12885000	-3.87
IRB	256.55	259.65	1.21	20245000	19490000	-3.73

Technical Trend

Pivot Report– Nifty 50

Symbol	PClose	Support3	Support2	Support1	Pivot	Resist1	Resist2	Resist3
ACC	1701.2	1656.5	1676.5	1688.9	1708.9	1721.2	1741.2	1753.6
ADANIPTS	347.5	325.5	330.6	339.1	344.2	352.7	357.8	366.3
AMBUJACEM	257.6	249.2	252.8	255.2	258.8	261.2	264.8	267.2
ASIANPAINT	1165.3	1141.2	1150.7	1158.0	1167.4	1174.7	1184.2	1191.5
AUROPHARMA	594.4	564.2	576.1	585.2	597.1	606.2	618.1	627.2
AXISBANK	518.2	501.4	506.0	512.1	516.7	522.8	527.4	533.5
BAJAJ-AUTO	2873.2	2790.7	2812.9	2843.0	2865.2	2895.3	2917.5	2947.6
BANKBARODA	186.8	178.9	181.8	184.3	187.1	189.6	192.5	195.0
BHARTIARTL	345.3	334.8	339.2	342.2	346.6	349.6	354.0	357.0
BOSCHLTD	23336.5	23014.3	23132.2	23234.3	23352.2	23454.3	23572.2	23674.3
BPCL	721.4	700.9	705.6	713.5	718.3	726.2	730.9	738.8
CIPLA	553.0	538.4	541.7	547.3	550.7	556.3	559.6	565.2
COALINDIA	278.2	271.9	274.0	276.1	278.1	280.2	282.3	284.4
DRREDDY	2581.2	2538.8	2556.4	2568.8	2586.4	2598.8	2616.4	2628.8
EICHERMOT	27128.5	26534.3	26662.2	26895.3	27023.2	27256.3	27384.2	27617.3
GAIL	421.8	408.9	411.9	416.9	419.9	424.9	427.9	432.9
GRASIM	1167.6	1112.8	1134.7	1151.2	1173.1	1189.5	1211.4	1227.9
HCLTECH	849.8	826.6	833.3	841.5	848.2	856.4	863.1	871.3
HDFC	1523.5	1488.4	1503.1	1513.3	1528.1	1538.3	1553.0	1563.2
HDFCBANK	1535.8	1517.5	1525.1	1530.4	1538.0	1543.4	1551.0	1556.3
HEROMOTOCO	3282.4	3059.5	3167.9	3225.1	3333.6	3390.8	3499.2	3556.4
HINDALCO	186.4	178.0	180.5	183.5	186.0	189.0	191.5	194.5
HINDUNILVR	952.1	936.5	942.0	947.0	952.5	957.5	963.0	968.0
IBULHSGFIN	1086.0	1023.7	1050.9	1068.4	1095.6	1113.1	1140.3	1157.8
ICICIBANK	300.6	290.6	294.5	297.6	301.5	304.5	308.4	311.5
INDUSINDBK	1420.9	1397.2	1406.4	1413.6	1422.8	1430.1	1439.3	1446.5
INFRATEL	365.9	342.9	349.6	357.8	364.5	372.7	379.4	387.6
INFY	946.7	932.0	937.1	941.9	946.9	951.7	956.8	961.6
IOC	440.8	420.2	425.2	433.0	438.0	445.8	450.8	458.6
ITC	271.5	263.8	267.4	269.5	273.1	275.1	278.7	280.8
KOTAKBANK	906.9	898.4	901.9	904.4	907.9	910.3	913.8	916.3
LT	1744.7	1662.2	1683.6	1714.1	1735.5	1766.1	1787.5	1818.0
LUPIN	1250.2	1193.5	1218.3	1234.2	1259.0	1275.0	1299.8	1315.7
M&M	1343.7	1307.7	1318.2	1330.9	1341.4	1354.2	1364.7	1377.4
MARUTI	6629.3	6556.5	6585.8	6607.5	6636.8	6658.5	6687.8	6709.5
NTPC	161.3	158.5	159.2	160.2	160.9	161.9	162.6	163.6
ONGC	186.1	182.9	184.2	185.2	186.5	187.4	188.7	189.7
POWERGRID	208.4	203.2	205.5	206.9	209.2	210.7	213.0	214.4
RELIANCE	1330.4	1309.1	1314.7	1322.5	1328.1	1335.9	1341.5	1349.3
SBIN	296.5	288.6	291.9	294.2	297.6	299.9	303.2	305.5
SUNPHARMA	640.3	621.2	625.8	633.1	637.7	644.9	649.5	656.8
TATAMOTORS	426.8	417.3	420.0	423.4	426.1	429.5	432.2	435.6
TATAMTRDVR	262.3	256.1	258.5	260.4	262.8	264.7	267.1	269.0
TATAPOWER	83.1	82.1	82.4	82.8	83.1	83.4	83.7	84.1
TATASTEEL	433.5	421.1	426.2	429.8	434.9	438.6	443.7	447.3
TCS	2352.6	2308.0	2320.3	2336.4	2348.7	2364.9	2377.2	2393.3
TECHM	426.2	409.6	415.3	420.7	426.4	431.8	437.5	442.9
ULTRACEMCO	4432.9	4355.4	4376.7	4404.8	4426.2	4454.3	4475.6	4503.7
WIPRO	508.9	493.9	497.2	503.1	506.4	512.3	515.6	521.5
YESBANK	1602.5	1566.5	1579.3	1590.9	1603.8	1615.4	1628.2	1639.8
ZEEL	495.7	483.1	488.5	492.1	497.5	501.1	506.5	510.1



BP WEALTH

Technical Research Desk

Tel: +91 22 61596173

Institutional Sales Desk

Tel: +91 22 61596403/04/05

Disclaimer Appendix

Analyst s holding in the Stock : Nil

Analyst s Certification:

We analysts and the authors of this report, hereby certify that all of the views expressed in this research report accurately reflect our personal views about any and all of the subject issuer s or securities. We also certify that no part of our compensation was, is, or will be directly or indirectly related to the specific recommendation s or view s in this report. Analysts aren't registered as research analysts by FINRA and might not be an associated person of the BP Equities Pvt. Ltd. Institutional Equities.

General Disclaimer

This report has been prepared by the research department of BP EQUITIES Pvt. Ltd, is for information purposes only. This report is not construed as an offer to sell or the solicitation of an offer to buy or sell any security in any jurisdiction where such an offer or solicitation would be illegal.

BP EQUITIES Pvt. Ltd have exercised due diligence in checking the correctness and authenticity of the information contained herein, so far as it relates to current and historical information, but do not guarantee its accuracy or completeness. The opinions expressed are our current opinions as of the date appearing in the material and may be subject to change from time to time. Prospective investors are cautioned that any forward looking statement are not predictions and are subject to change without prior notice.

Recipients of this material should rely on their own investigations and take their own professional advice. BP EQUITIES Pvt. Ltd or any of its affiliates or employees shall not be in any way responsible for any loss or damage that may arise to any person from any inadvertent error in the information contained in this report. BP EQUITIES Pvt. Ltd. or any of its affiliates or employees do not provide, at any time, any express or implied warranty of any kind, regarding any matter pertaining to this report, including without limitation the implied warranties of merchantability, fitness for a particular purpose, and non-infringement. The recipients of this report should rely on their own investigations.

BP EQUITIES Pvt. Ltd and/or its affiliates and/or employees may have interests/ positions, financial or otherwise in the securities mentioned in this report. Opinions expressed are our current opinions as of the date appearing on this material only. While we endeavor to update on a reasonable basis the information discussed in this material, there may be regulatory, compliance, or other reasons that prevent us from doing so.

This report is not directed to or intended for display, downloading, printing, reproducing or for distribution to or use by any person in any locality, state and country or other jurisdiction where such distribution, publication or use would be contrary to the law or regulation or would subject to BP EQUITIES Pvt. Ltd or any of its affiliates to any registration or licensing requirement within such jurisdiction.

Corporate Office:

4th floor,
Rustom Bldg,
29, Veer Nariman Road, Fort,
Mumbai-400001
Phone- +91 22 6159 6464
Fax-+91 22 6159 6160
Website- www.bpwealth.com

Registered Office:

24/26, 1st Floor, Cama Building,
Dalal street, Fort,
Mumbai-400001
BP Equities Pvt. Ltd.
CIN No: U67120MH1997PTC107392