

Technical Trend

INTRADAY TRADER'S PICKS

Sr.No.	STOCK	CLOSE	S1	S2	S3	R1	R2	R3	RECOMMENDATION
1	CAPF	777.05	765	757	749	797	805	813	BUY ABOVE 781
2	MONNETISPA	37.40	37	36	35	39	40	41	BUY ABOVE 38
3	PNB	152.25	149	146	143	157	160	163	BUY ABOVE 153
4	WONDERLA	395.15	391	386	382	401	406	410	BUY ABOVE 396
5	ZEEMEDIA	39.75	38.20	37.4	36.9	41.20	42	42.5	BUY ABOVE 40

Technical Trend

DERIVATIVES

INDICES SNAPSHOT

SCRIPS	CP AS ON 07/04/2017	CP AS ON 10/04/2017	Change (%)	OI AS ON 07/04/2017	OI AS ON 10/04/2017	Change (%)
BANKNIFTY	21442.15	21558.85	0.54	2908600	3018880	3.79
NIFTY	9211.45	9209.35	-0.02	23614875	23242050	-1.58
NIFTYIT	10484	10348	-1.30	47300	47900	1.27

Derivative Highlights

- ⇒ Nifty Future closed with a premium of 28 points V/S a premium of 10 points.
- ⇒ Nifty Future Open Interest decreased by 1.58%. BankNifty Future Open Interest increased by 3.79%
- ⇒ Nifty PCR - OI remained unchanged at 1.08, Nifty PCR - Vol increased from 0.98 to 1.02
- ⇒ FII Sold 716.19 crore while DII Bought Rs. 201.69 crore in the Cash Segment. FII Sold Rs. 511.06 crore in Index Futures and Bought Rs. 537.03 crore in index options, while in Stock Future they Bought Rs. 788.07 crore and Sold Rs 54.44 crore in stock options.
- ⇒ Among Index Option space, Highest Open Interest concentration was seen in 9000 & 9100 Strike price among the PE options. Where as among CE Options Highest Open Interest Concentration was seen in 9300 & 9400 Strike price.
- ⇒ Highest Open Interest Build Up among the PE options was seen in 9050 & 8800 Strike price. Among CE options highest build up was seen in 9350 & 9200 Strike price.

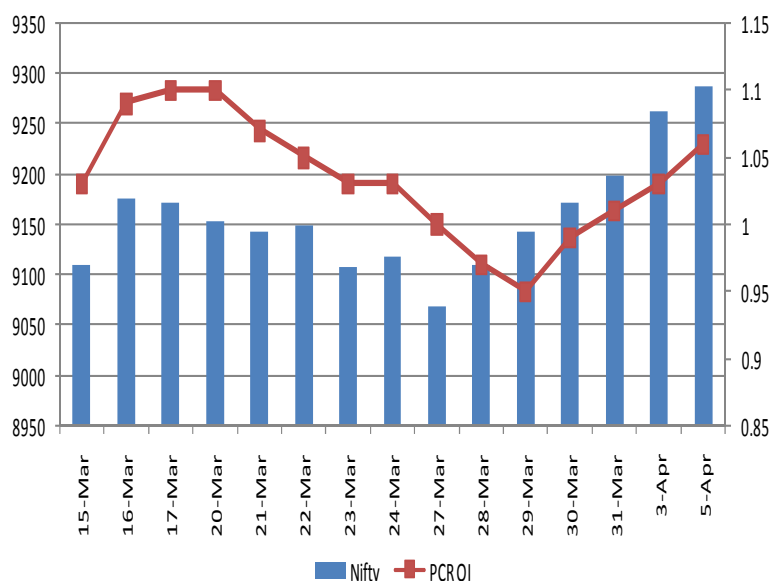
OI Concentration

PUT OPTION		CALL OPTION	
Strike Price	Open Interest	Strike Price	Open Interest
9000	5383575	9300	4346925
9100	4922025	9400	4208250
9200	3883050	9200	3586275
8900	3203025	9100	1988625
8800	2901975	9600	1865250

Highest Change in OI

PUT OPTION		CALL OPTION	
Strike Price	Change in OI	Strike Price	Change in OI
9050	383775	9350	454650
8800	262350	9200	419325
8900	231675	9400	309525
8500	154650	9700	245775
9200	143775	8500	100650

Nifty Future Price V/S PCR-OI



Technical Trend

Stock Analysis

Long Build-up	Long Unwinding	Short Build-up	Short Covering
ADANIENT	MARICO	ASHOKLEY	ALBK
BANKINDIA	MCDOWELL-N	HCLTECH	BATAINDIA
ESCORTS	NHPC	IBULHSGFIN	DIVISLAB
GRASIM	RECLTD	INFY	INFRATEL
INDIGO		TATACOMM	JETAIRWAYS
JUSTDIAL		WIPRO	TATACHEM

STATISTICS

Highest Premium

SCRIPS	Premium %	Price change %
INFIBEAM	0.88	0.01
ICIL	0.79	0.23
BATAINDIA	0.76	1.53
EXIDEIND	0.70	1.00
INDIGO	0.70	4.51

Highest Discount

SCRIPS	Premium %	Price change %
OFSS	-4.05	-2.85
PNB	-1.94	1.87
BANKINDIA	-0.45	3.19
CONCOR	-0.38	0.90
CEATLTD	-0.34	0.49

TOP 5 VOLUME GAINER FOR THE SESSION

SCRIPS	CP AS ON 07/04/2017	CP AS ON 10/04/2017	Change (%)	Vol AS ON 07/04/2017	Vol AS ON 10/04/2017	Change (%)
MCDOWELL-N	2030.9	1893.55	-6.76	2066	16464	697%
DIVISLAB	622.5	658.5	5.78	3043	15472	408%
TATACHEM	606.15	619	2.12	1199	2869	139%
SUZLON	18.9	19.45	2.91	1308	2699	106%
HCLTECH	849.4	836.05	-1.57	1388	2750	98%

TOP 5 VOLUME LOSER FOR THE SESSION

SCRIPS	CP AS ON 07/04/2017	CP AS ON 10/04/2017	Change (%)	Vol AS ON 07/04/2017	Vol AS ON 10/04/2017	Change (%)
UJJIVAN	387.2	380.95	-1.61	8341	1015	-88%
JINDALSTEL	129.75	128.45	-1.00	7378	1478	-80%
WOCKPHARMA	763.95	765.6	0.22	6770	1650	-76%
CADILAHC	456.2	451.85	-0.95	4960	1209	-76%
SUNPHARMA	666	670.55	0.68	14604	3954	-73%

Technical Trend

TOP 10 OPEN INTEREST GAINER FOR THE SESSION

SCRIPS	CP AS ON 07/04/2017	CP AS ON 10/04/2017	Change (%)	OI AS ON 07/04/2017	OI AS ON 10/04/2017	Change (%)
ESCORTS	523.2	548.55	4.85	877800	1203400	37.09
INDIGO	1038.05	1093.25	5.32	709200	900600	26.99
INDIANB	271.4	271.95	0.20	1098000	1338000	21.86
SUZLON	18.9	19.45	2.91	121290000	146730000	20.97
ORIENTBANK	141.15	150.8	6.84	13968000	16122000	15.42
PEL	1927.1	1973.7	2.42	245700	282300	14.90
YESBANK	1556.75	1603.25	2.99	7525700	8625400	14.61
DALMIABHA	2171.3	2128.55	-1.97	238200	269400	13.10
TORNTPOWER	230.15	222.85	-3.17	3540000	3930000	11.02
TITAN	487.7	488.35	0.13	5334000	5797500	8.69

TOP 10 OPEN INTEREST LOSER FOR THE SESSION

SCRIPS	CP AS ON 07/04/2017	CP AS ON 10/04/2017	Change (%)	OI AS ON 07/04/2017	OI AS ON 10/04/2017	Change (%)
HINDALCO	193.65	195.5	0.96	43078000	39567500	-8.15
IBREALEST	88.4	89.75	1.53	29650000	27470000	-7.35
BEL	167.7	172.25	2.71	29250000	27292500	-6.69
ALBK	72.6	74.1	2.07	15470000	14450000	-6.59
CADILAHC	456.2	451.85	-0.95	3787200	3568000	-5.79
NCC	84.6	86.2	1.89	28288000	26776000	-5.35
JINDALSTEL	129.75	128.45	-1.00	46449000	43983000	-5.31
DIVISLAB	622.5	658.5	5.78	10693800	10139400	-5.18
BATAINDIA	558.85	570.35	2.06	4563900	4412100	-3.33
CONCOR	1120.85	1127.05	0.55	1250000	1210625	-3.15

Technical Trend

Pivot Report– Nifty 50

Symbol	PClose	Support3	Support2	Support1	Pivot	Resist1	Resist2	Resist3
ACC	1473.8	1454.5	1460.0	1466.9	1472.5	1479.4	1484.9	1491.8
ADANIPTS	352.2	339.7	342.9	347.5	350.7	355.3	358.5	363.1
AMBUJACEM	244.9	239.1	240.6	242.7	244.2	246.3	247.8	249.9
ASIANPAINT	1059.2	1027.3	1042.2	1050.7	1065.6	1074.1	1089.0	1097.5
AUROPHARMA	655.0	640.7	647.1	651.0	657.4	661.4	667.8	671.7
AXISBANK	510.8	495.4	499.4	505.1	509.0	514.7	518.7	524.4
BAJAJ-AUTO	2837.0	2784.7	2803.4	2820.2	2838.8	2855.6	2874.3	2891.1
BANKBARODA	171.1	164.9	166.5	168.8	170.5	172.8	174.4	176.7
BHARTIARTL	345.7	336.0	339.0	342.4	345.4	348.7	351.7	355.1
BOSCHLTD	22730.3	22184.4	22416.7	22573.5	22805.8	22962.5	23194.8	23351.6
BPCL	700.3	660.4	670.2	685.3	695.1	710.1	719.9	735.0
CIPLA	589.7	581.3	584.8	587.2	590.7	593.2	596.7	599.1
COALINDIA	286.8	281.0	282.9	284.8	286.7	288.7	290.6	292.5
DRREDDY	2635.9	2583.7	2608.1	2622.0	2646.4	2660.3	2684.7	2698.6
EICHERMOT	25578.3	25195.5	25360.8	25469.5	25634.8	25743.5	25908.8	26017.5
GAIL	384.9	376.9	380.2	382.5	385.8	388.1	391.4	393.7
GRASIM	1090.7	1036.8	1048.6	1069.6	1081.4	1102.4	1114.2	1135.2
HCLTECH	833.1	797.0	814.0	823.5	840.5	850.0	867.0	876.5
HDFC	1467.5	1441.4	1453.2	1460.4	1472.2	1479.3	1491.1	1498.3
HDFCBANK	1434.2	1419.9	1426.3	1430.2	1436.6	1440.6	1447.0	1450.9
HEROMOTOCO	3199.4	3126.6	3155.8	3177.6	3206.8	3228.6	3257.8	3279.6
HINDALCO	195.1	190.4	191.5	193.3	194.4	196.2	197.3	199.1
HINDUNILVR	926.0	904.4	910.2	918.1	923.9	931.8	937.6	945.5
IBULHSGFIN	935.2	886.7	905.4	920.3	939.1	954.0	972.7	987.6
ICICIBANK	277.7	273.3	274.7	276.2	277.6	279.1	280.5	282.0
INDUSINDBK	1425.4	1390.7	1399.9	1412.6	1421.8	1434.6	1443.8	1456.5
INFRATEL	357.0	336.8	342.4	349.7	355.3	362.6	368.2	375.5
INFY	953.4	899.8	924.9	939.2	964.3	978.6	1003.7	1018.0
IOC	411.3	393.0	397.7	404.5	409.1	415.9	420.6	427.4
ITC	273.6	269.2	270.7	272.1	273.6	275.0	276.5	277.9
KOTAKBANK	877.4	857.5	862.5	869.9	874.9	882.3	887.3	894.7
LT	1674.1	1608.9	1636.0	1655.0	1682.1	1701.1	1728.2	1747.2
LUPIN	1415.4	1379.2	1388.1	1401.7	1410.6	1424.2	1433.1	1446.7
M&M	1280.8	1255.9	1261.7	1271.3	1277.1	1286.6	1292.4	1302.0
MARUTI	6268.9	6177.3	6211.2	6240.0	6273.9	6302.8	6336.7	6365.5
NTPC	166.8	161.3	163.3	165.0	167.0	168.7	170.7	172.4
ONGC	186.5	184.3	185.3	185.9	186.8	187.4	188.4	189.0
POWERGRID	195.3	193.3	193.8	194.6	195.1	195.9	196.4	197.2
RELIANCE	1381.4	1316.5	1346.9	1364.1	1394.5	1411.7	1442.1	1459.3
SBIN	289.4	283.4	285.0	287.2	288.8	291.0	292.6	294.8
SUNPHARMA	667.8	654.0	657.6	662.7	666.3	671.4	675.0	680.1
TATAMOTORS	474.9	458.1	462.8	468.9	473.6	479.6	484.3	490.4
TATAMTRDVR	290.3	274.7	278.5	284.4	288.2	294.1	297.9	303.8
TATAPOWER	87.1	85.7	86.3	86.7	87.3	87.7	88.3	88.7
TATASTEEL	495.4	482.5	486.5	490.9	494.9	499.3	503.3	507.7
TCS	2422.3	2357.8	2381.4	2401.8	2425.4	2445.8	2469.4	2489.8
TECHM	443.1	432.9	437.2	440.1	444.4	447.3	451.6	454.5
ULTRACEMCO	4058.9	3930.7	3975.9	4017.4	4062.5	4104.0	4149.2	4190.7
WIPRO	504.4	483.4	492.9	498.7	508.2	514.0	523.5	529.3
YESBANK	1599.6	1524.9	1542.0	1570.8	1587.9	1616.7	1633.8	1662.6
ZEEL	553.5	535.5	539.7	546.6	550.8	557.7	561.9	568.8



BP WEALTH

Technical Research Desk

Tel: +91 22 61596173

Institutional Sales Desk

Tel: +91 22 61596403/04/05

Disclaimer Appendix

Analyst s holding in the Stock : Nil

Analyst s Certification:

We analysts and the authors of this report, hereby certify that all of the views expressed in this research report accurately reflect our personal views about any and all of the subject issuer s or securities. We also certify that no part of our compensation was, is, or will be directly or indirectly related to the specific recommendation s or view s in this report. Analysts aren't registered as research analysts by FINRA and might not be an associated person of the BP Equities Pvt. Ltd. Institutional Equities.

General Disclaimer

This report has been prepared by the research department of BP EQUITIES Pvt. Ltd, is for information purposes only. This report is not construed as an offer to sell or the solicitation of an offer to buy or sell any security in any jurisdiction where such an offer or solicitation would be illegal.

BP EQUITIES Pvt. Ltd have exercised due diligence in checking the correctness and authenticity of the information contained herein, so far as it relates to current and historical information, but do not guarantee its accuracy or completeness. The opinions expressed are our current opinions as of the date appearing in the material and may be subject to change from time to time. Prospective investors are cautioned that any forward looking statement are not predictions and are subject to change without prior notice.

Recipients of this material should rely on their own investigations and take their own professional advice. BP EQUITIES Pvt. Ltd or any of its affiliates or employees shall not be in any way responsible for any loss or damage that may arise to any person from any inadvertent error in the information contained in this report. BP EQUITIES Pvt. Ltd. or any of its affiliates or employees do not provide, at any time, any express or implied warranty of any kind, regarding any matter pertaining to this report, including without limitation the implied warranties of merchantability, fitness for a particular purpose, and non-infringement. The recipients of this report should rely on their own investigations.

BP EQUITIES Pvt. Ltd and/or its affiliates and/or employees may have interests/ positions, financial or otherwise in the securities mentioned in this report. Opinions expressed are our current opinions as of the date appearing on this material only. While we endeavor to update on a reasonable basis the information discussed in this material, there may be regulatory, compliance, or other reasons that prevent us from doing so.

This report is not directed to or intended for display, downloading, printing, reproducing or for distribution to or use by any person in any locality, state and country or other jurisdiction where such distribution, publication or use would be contrary to the law or regulation or would subject to BP EQUITIES Pvt. Ltd or any of its affiliates to any registration or licensing requirement within such jurisdiction.

Corporate Office:

4th floor,
Rustom Bldg,
29, Veer Nariman Road, Fort,
Mumbai-400001
Phone- +91 22 6159 6464
Fax-+91 22 6159 6160
Website- www.bpwealth.com

Registered Office:

24/26, 1st Floor, Cama Building,
Dalal street, Fort,
Mumbai-400001
BP Equities Pvt. Ltd.
CIN No: U67120MH1997PTC107392