

NIFTY FUT : CONTINUE UPMOVE TOWARDS 9450-9600



Source: Falcon, BP Equities Research

Nifty futures closed 0.74% higher at 9419. Index gave a breakout from up sloping channel after consolidating around it which is a bullish signal for short term trend. RSI has earlier formed positive reversal and is now consolidating around down sloping trend line, a sustenance above the trend line will make the index resume its previous up move. Going ahead till index sustains above 9370 it is expected to continue its up move towards 9450-9600 while support past 9370 comes at 9270.

Intraday Nifty Future Resistance—9450/9550/9600 Support—9370/9320/9270

BANK NIFTY FUT : CONTINUE UPMOVE TOWARDS 23250



Source: Falcon, BP Equities Research

Bank Nifty futures closed 0.43% lower at 22861. Index has given upward breakout form the up sloping channel which is a bullish signal for short term trend. RSI has surpassed a down sloping trend line which is a bullish signal for short term trend. Going ahead index has immediate support at 22750, till it maintains above this range it is expected to continue its up move initially towards 23250 while support past 22750 comes at 22650-22500.

Intraday Bank Nifty Future Resistance—22900/23100/23250 Support—22750/22650/22500

Technical Trend

INTRADAY TRADER'S PICKS

Sr.No.	STOCK	CLOSE	S1	S2	S3	R1	R2	R3	RECOMMENDATION
1	ADANI PORTS	351.90	348	343	338	358	363	368	BUY ABOVE 353
2	GPPL	159.90	158	155	152	166	169	172	BUY ABOVE 162
3	INDHOTEL	132.50	130	128	126	137	139	141	BUY ABOVE 133.50
4	PRAKASH	91.85	90	88	86	95	97	99	BUY ABOVE 92.50
5	RAMCOCEM	716.55	710	698	686	734	746	758	BUY ABOVE 722

Technical Trend

DERIVATIVES

INDICES SNAPSHOT

SCRIPS	CP AS ON 09/05/2017	CP AS ON 10/05/2017	Change (%)	OI AS ON 09/05/2017	OI AS ON 10/05/2017	Change (%)
BANKNIFTY	22762.85	22860.9	0.43	3756920	3935120	4.74
NIFTY	9350.4	9419.2	0.74	20818050	22264125	6.95
NIFTYIT	10300	10218	-0.80	45750	36100	-21.09

Derivative Highlights

- ⇒ Nifty Future closed with a premium of 12 points v/s a premium of 33 points in the previous session.
- ⇒ Nifty Future Open Interest increased by 6.95%. BankNifty Future Open Interest increased by 4.74%
- ⇒ Nifty PCR - OI increased from 1.03 to 1.10, Nifty PCR - Vol increased from 1.09 to 1.17
- ⇒ FII Bought 893.36 crore while DII Sold Rs. 229.73 crore in the Cash Segment. FII Sold Rs. 394.89 crore in Index Futures and Bought Rs. 857.26 crore in index options, while in Bought Future they Sold Rs. 382.93 crore and Bought Rs 29.01 crore in stock options.
- ⇒ Among Index Option space, Highest Open Interest concentration was seen in 9300 & 9200 Strike price among the PE options. Where as among CE Options Highest Open Interest Concentration was seen in 9500 & 9400 Strike price.
- ⇒ Highest Open Interest Build Up among the PE options was seen in 9300 & 9400 Strike price. Among CE options highest build up was seen in 9500 & 9450 Strike price.

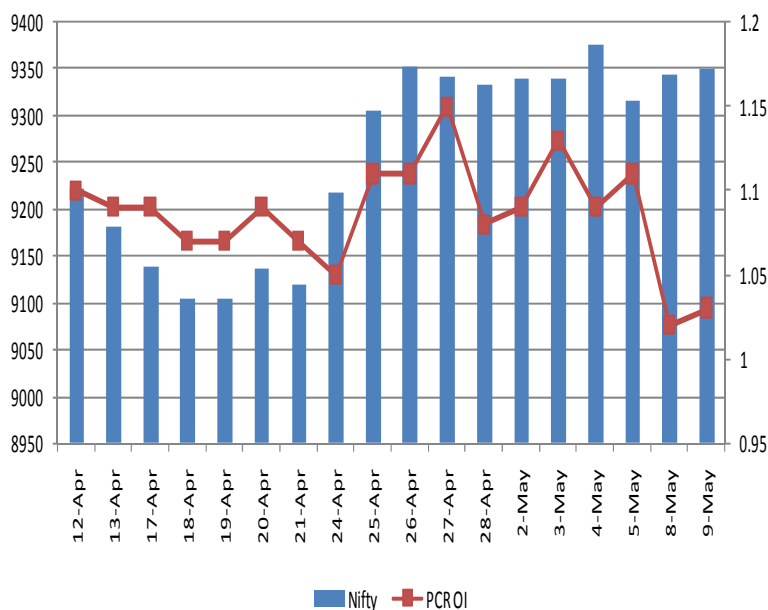
OI Concentration

PUT OPTION		CALL OPTION	
Strike Price	Open Interest	Strike Price	Open Interest
9300	7677000	9500	6518625
9200	5675550	9400	4672800
9100	4695525	9600	3333225
9000	4644225	9300	2768775
9400	3474675	9700	1556175

Highest Change in OI

PUT OPTION		CALL OPTION	
Strike Price	Change in OI	Strike Price	Change in OI
9300	1609725	9500	849825
9400	1193175	9450	277575
9200	499500	9650	210750
9350	361575	9550	162075
9250	211200	9800	157050

Nifty Future Price V/S PCR-OI



Technical Trend

Stock Analysis

Long Build-up	Long Unwinding	Short Build-up	Short Covering
CENTURYTEX	ABIRLANUVO	AUROPHARMA	AXISBANK
GODREJCP	BANKINDIA	BEML	BPCL
GODREJIND	HEROMOTOCO	COALINDIA	DALMIABHA
HDIL	IBULHSGFIN	HDFC	HCLTECH
JSWENERGY	JUBLFOOD	LICHSGFIN	JETAIRWAYS
RELCAPITAL	M&MFIN	LUPIN	RECLTD

STATISTICS

Highest Premium

SCRIPS	Premium %	Price change %
GMRINFRA	0.88	-0.87
NHPC	0.64	0.16
MARICO	0.63	4.18
GSFC	0.62	1.47
IFCI	0.61	1.06

Highest Discount

SCRIPS	Premium %	Price change %
INFIBEAM	-3.08	-0.45
CEATLTD	-2.63	-3.08
HCLTECH	-0.89	-0.72
GODREJCP	-0.54	-0.28
CASTROLIND	-0.50	0.31

TOP 5 VOLUME GAINER FOR THE SESSION

SCRIPS	CP AS ON 09/05/2017	CP AS ON 10/05/2017	Change (%)	Vol AS ON 09/05/2017	Vol AS ON 10/05/2017	Change (%)
ESCORTS	601.8	637.35	5.91	1141	10201	794.04%
PETRONET	431.3	435.45	0.96	1149	6201	439.69%
BIOCON	1051.3	1009.4	-3.99	1742	8342	378.87%
ZEEL	498.15	517.6	3.90	2330	10716	359.91%
BHARTIARTL	346.85	372.4	7.37	5723	25353	343.00%

TOP 5 VOLUME LOSER FOR THE SESSION

SCRIPS	CP AS ON 09/05/2017	CP AS ON 10/05/2017	Change (%)	Vol AS ON 09/05/2017	Vol AS ON 10/05/2017	Change (%)
SYNDIBANK	92	91.15	-0.92	10559	1282	-87.86%
HDIL	97.5	95.8	-1.74	13569	1962	-85.54%
JSWENERGY	69.35	69.95	0.87	7597	1119	-85.27%
GODREJCP	1927.7	1913.6	-0.73	9771	2049	-79.03%
RECLTD	221.65	219.55	-0.95	6373	2576	-59.58%

Technical Trend

TOP 10 OPEN INTEREST GAINER FOR THE SESSION

SCRIPS	CP AS ON 09/05/2017	CP AS ON 10/05/2017	Change (%)	OI AS ON 09/05/2017	OI AS ON 10/05/2017	Change (%)
NESTLEIND	6717.35	6937.55	3.28	29700	61000	105.39
ESCORTS	601.8	637.35	5.91	1190200	1690700	42.05
BERGEPAIN	261.7	261.35	-0.13	682000	948200	39.03
MGL	996.45	1013.4	1.70	262800	358200	36.30
CAPF	793.65	795.75	0.26	1083200	1383200	27.70
NIITTECH	496.95	530.1	6.67	715500	850500	18.87
CGPOWER	83.8	89.3	6.56	16752000	19740000	17.84
CHOLAFIN	1082.05	1094.05	1.11	163000	188000	15.34
CADILAH	474.3	472.45	-0.39	2568000	2936000	14.33
CEATLTD	1613.4	1604.2	-0.57	2262400	2541700	12.35

TOP 10 OPEN INTEREST LOSER FOR THE SESSION

SCRIPS	CP AS ON 09/05/2017	CP AS ON 10/05/2017	Change (%)	OI AS ON 09/05/2017	OI AS ON 10/05/2017	Change (%)
SYNDIBANK	92	91.15	-0.92	24228000	21150000	-12.70
TITAN	469.7	483	2.83	6418500	5836500	-9.07
HDIL	97.5	95.8	-1.74	34920000	31848000	-8.80
GODREJCP	1927.7	1913.6	-0.73	621600	568000	-8.62
AUROPHARMA	597.6	619.5	3.66	16949500	15600900	-7.96
HEXAWARE	250.95	249.6	-0.54	2502000	2316000	-7.43
INFRATEL	366.85	366.85	0.00	6692800	6297600	-5.90
JSWENERGY	69.35	69.95	0.87	66920500	63280500	-5.44
DABUR	274.25	283.65	3.43	12607500	11957500	-5.16
RELIANCE	1337.2	1359.45	1.66	18920000	18159000	-4.02

Technical Trend

Pivot Report– Nifty 50

Symbol	PClose	Support3	Support2	Support1	Pivot	Resist1	Resist2	Resist3
ACC	1690.4	1634.5	1654.1	1672.2	1691.8	1709.9	1729.5	1747.6
ADANIPTS	351.9	340.8	343.4	347.7	350.3	354.6	357.2	361.5
AMBUJACEM	259.7	251.2	253.2	256.4	258.4	261.7	263.7	266.9
ASIANPAINT	1158.3	1109.8	1129.0	1143.6	1162.8	1177.5	1196.7	1211.3
AUOPHARMA	619.0	581.2	589.9	604.4	613.1	627.6	636.3	650.8
AXISBANK	526.4	507.0	511.4	518.9	523.2	530.7	535.1	542.6
BAJAJ-AUTO	2904.8	2821.4	2839.8	2872.3	2890.6	2923.1	2941.5	2974.0
BANKBARODA	185.6	180.9	183.0	184.3	186.3	187.6	189.7	191.0
BHARTIARTL	372.8	302.1	319.3	346.0	363.2	389.9	407.1	433.8
BOSCHLTD	23214.0	22586.0	22855.6	23034.8	23304.4	23483.6	23753.2	23932.4
BPCL	728.3	712.9	716.7	722.5	726.2	732.0	735.8	741.6
CIPLA	561.1	542.7	547.0	554.0	558.3	565.3	569.6	576.6
COALINDIA	278.6	275.1	276.1	277.3	278.3	279.5	280.5	281.7
DRREDDY	2602.9	2536.5	2557.8	2580.3	2601.6	2624.1	2645.4	2667.9
EICHERMOT	27869.3	26114.7	26513.5	27191.4	27590.2	28268.1	28666.9	29344.8
GAIL	417.5	408.4	412.3	414.9	418.8	421.4	425.3	427.9
GRASIM	1166.5	1126.7	1140.5	1153.5	1167.2	1180.2	1194.0	1207.0
HCLTECH	843.6	824.7	831.4	837.5	844.2	850.3	857.0	863.1
HDFC	1572.0	1493.0	1510.1	1541.1	1558.2	1589.1	1606.2	1637.2
HDFCBANK	1551.8	1523.0	1530.0	1540.9	1548.0	1558.9	1565.9	1576.8
HEROMOTOCO	3323.9	3211.0	3238.0	3280.9	3307.9	3350.8	3377.8	3420.7
HINDALCO	187.1	182.4	183.9	185.5	187.0	188.6	190.1	191.7
HINDUNILVR	996.4	922.4	938.3	967.3	983.2	1012.2	1028.1	1057.1
IBULHSGFIN	1082.9	1051.3	1062.4	1072.7	1083.8	1094.1	1105.2	1115.5
ICICIBANK	298.7	291.2	294.3	296.5	299.6	301.8	304.9	307.1
INDUSINDBK	1431.9	1406.8	1413.0	1422.5	1428.7	1438.2	1444.4	1453.9
INFRATEL	366.7	352.4	356.2	361.4	365.2	370.4	374.2	379.4
INFY	943.7	924.4	930.8	937.2	943.6	950.1	956.5	962.9
IOC	441.5	427.5	431.6	436.5	440.6	445.6	449.7	454.6
ITC	274.0	268.4	270.2	272.1	273.9	275.8	277.6	279.5
KOTAKBANK	927.7	897.2	904.1	915.9	922.8	934.5	941.4	953.2
LT	1739.3	1691.3	1711.2	1725.2	1745.1	1759.1	1779.0	1793.0
LUPIN	1258.9	1228.2	1239.9	1249.4	1261.2	1270.7	1282.4	1291.9
M&M	1376.4	1324.7	1336.3	1356.4	1368.0	1388.1	1399.7	1419.8
MARUTI	6737.8	6546.3	6591.1	6664.4	6709.2	6782.5	6827.3	6900.6
NTPC	162.2	159.5	160.4	161.3	162.1	163.0	163.9	164.8
ONGC	188.0	183.4	184.5	186.2	187.3	189.1	190.2	191.9
POWERGRID	210.5	207.4	208.2	209.4	210.2	211.3	212.1	213.3
RELIANCE	1359.1	1305.7	1318.2	1338.6	1351.1	1371.6	1384.1	1404.5
SBIN	294.5	287.1	290.1	292.3	295.2	297.4	300.4	302.6
SUNPHARMA	642.8	628.7	633.0	637.9	642.3	647.2	651.5	656.4
TATAMOTORS	432.3	417.5	420.8	426.5	429.8	435.5	438.8	444.5
TATAMTRDVR	263.4	255.5	258.3	260.8	263.6	266.1	268.9	271.4
TATAPOWER	81.6	78.6	80.0	80.8	82.2	82.9	84.3	85.1
TATASTEEL	437.5	428.7	430.9	434.2	436.4	439.6	441.8	445.1
TCS	2332.5	2273.4	2294.7	2313.6	2334.9	2353.7	2375.0	2393.9
TECHM	430.4	419.9	423.5	427.0	430.6	434.1	437.7	441.2
ULTRACEMCO	4367.6	4174.3	4249.9	4308.7	4384.4	4443.2	4518.8	4577.6
WIPRO	499.7	484.0	491.3	495.5	502.8	507.0	514.3	518.5
YESBANK	1598.4	1552.5	1568.3	1583.4	1599.2	1614.2	1630.0	1645.1
ZEEL	516.2	474.7	485.3	500.8	511.4	526.9	537.5	553.0



BP WEALTH

Technical Research Desk

Tel: +91 22 61596173

Institutional Sales Desk

Tel: +91 22 61596403/04/05

Disclaimer Appendix

Analyst s holding in the Stock : Nil

Analyst s Certification:

We analysts and the authors of this report, hereby certify that all of the views expressed in this research report accurately reflect our personal views about any and all of the subject issuer s or securities. We also certify that no part of our compensation was, is, or will be directly or indirectly related to the specific recommendation s or view s in this report. Analysts aren't registered as research analysts by FINRA and might not be an associated person of the BP Equities Pvt. Ltd. Institutional Equities.

General Disclaimer

This report has been prepared by the research department of BP EQUITIES Pvt. Ltd, is for information purposes only. This report is not construed as an offer to sell or the solicitation of an offer to buy or sell any security in any jurisdiction where such an offer or solicitation would be illegal.

BP EQUITIES Pvt. Ltd have exercised due diligence in checking the correctness and authenticity of the information contained herein, so far as it relates to current and historical information, but do not guarantee its accuracy or completeness. The opinions expressed are our current opinions as of the date appearing in the material and may be subject to change from time to time. Prospective investors are cautioned that any forward looking statement are not predictions and are subject to change without prior notice.

Recipients of this material should rely on their own investigations and take their own professional advice. BP EQUITIES Pvt. Ltd or any of its affiliates or employees shall not be in any way responsible for any loss or damage that may arise to any person from any inadvertent error in the information contained in this report. BP EQUITIES Pvt. Ltd. or any of its affiliates or employees do not provide, at any time, any express or implied warranty of any kind, regarding any matter pertaining to this report, including without limitation the implied warranties of merchantability, fitness for a particular purpose, and non-infringement. The recipients of this report should rely on their own investigations.

BP EQUITIES Pvt. Ltd and/or its affiliates and/or employees may have interests/ positions, financial or otherwise in the securities mentioned in this report. Opinions expressed are our current opinions as of the date appearing on this material only. While we endeavor to update on a reasonable basis the information discussed in this material, there may be regulatory, compliance, or other reasons that prevent us from doing so.

This report is not directed to or intended for display, downloading, printing, reproducing or for distribution to or use by any person in any locality, state and country or other jurisdiction where such distribution, publication or use would be contrary to the law or regulation or would subject to BP EQUITIES Pvt. Ltd or any of its affiliates to any registration or licensing requirement within such jurisdiction.

Corporate Office:

4th floor,
Rustom Bldg,
29, Veer Nariman Road, Fort,
Mumbai-400001
Phone- +91 22 6159 6464
Fax-+91 22 6159 6160
Website- www.bpwealth.com

Registered Office:

24/26, 1st Floor, Cama Building,
Dalal street, Fort,
Mumbai-400001
BP Equities Pvt. Ltd.
CIN No: U67120MH1997PTC107392