

## NIFTY FUT : SUSTENANCE BELOW 9210 WILL CALL FOR PROFIT BOOKING



Source: Falcon, BP Equities Research

Nifty futures closed 0.45% lower at 9223. Index is placed around the lower trend line of the up sloping channel, a failure to sustain above this trendline will make the short term trend negative. Earlier Index has formed Tri Star Doji candlestick pattern which suggests the recent peak to act as important resistance for short term. Going ahead index a sustenance below 9210 will make the short term trend negative and will open the way for 9160-9100 while resistance comes at 9290-9350.

Intraday Nifty Future                      Resistance—9260/9290/9320                      Support—9160/9100/9050

## BANK NIFTY FUT : IMMEDIATE RESISTANCE AT 21800



Source: Falcon, BP Equities Research

Bank Nifty futures closed 0.22% lower at 21710. Index formed Bearish harami candlestick pattern which needs confirmation in the form of a lower close on the following day. Index is placed around the upper trend line of the up sloping channel, sustenance above the upper trend line will further accelerate the up move. Going ahead index has immediate resistance at 21800, for index to continue its up move it needs to sustain above this level which if it does will open the way for 22000 while support comes at 21630-21450.

Intraday Bank Nifty Future                      Resistance—21800/21900/22000                      Support—21630/21450/21200

## Technical Trend

### INTRADAY TRADER'S PICKS

| Sr.No. | STOCK      | CLOSE  | S1    | S2  | S3  | R1    | R2  | R3  | RECOMMENDATION         |
|--------|------------|--------|-------|-----|-----|-------|-----|-----|------------------------|
| 1      | CARBORUNIV | 300.20 | 296   | 291 | 286 | 308   | 313 | 318 | <b>BUY ABOVE 302</b>   |
| 2      | CIPLA      | 579.40 | 571   | 565 | 559 | 593   | 599 | 605 | <b>BUY ABOVE 582</b>   |
| 3      | HAVELLS    | 489.25 | 485   | 479 | 473 | 499   | 505 | 511 | <b>BUY ABOVE 492</b>   |
| 4      | ICIL       | 197.70 | 195   | 192 | 189 | 203   | 206 | 209 | <b>BUY ABOVE 199</b>   |
| 5      | LAKSHVILAS | 174.25 | 172.5 | 170 | 168 | 178.5 | 181 | 183 | <b>BUY ABOVE 175.5</b> |

## Technical Trend

### DERIVATIVES

#### INDICES SNAPSHOT

| SCRIPS    | CP AS ON 11/04/2017 | CP AS ON 12/04/2017 | Change (%) | OI AS ON 11/04/2017 | OI AS ON 12/04/2017 | Change (%) |
|-----------|---------------------|---------------------|------------|---------------------|---------------------|------------|
| BANKNIFTY | 21758.55            | 21710.2             | -0.22      | 3108440             | 3088920             | -0.63      |
| NIFTY     | 9264.45             | 9223.2              | -0.45      | 23754375            | 23672700            | -0.34      |
| NIFTYIT   | 10402               | 10311               | -0.87      | 48150               | 48750               | 1.25       |

#### Derivative Highlights

- ⇒ Nifty Future closed with a premium of 20 points V/S a premium of 27 points.
- ⇒ Nifty Future Open Interest decreased by 0.34%. BankNifty Future Open Interest decreased by 0.63%
- ⇒ Nifty PCR - OI decreased from 1.11 to 1.10, Nifty PCR - Vol decreased from 1.17 to 1.02
- ⇒ FII Sold 580.70 crore while DII Bought Rs. 701.12 crore in the Cash Segment. FII Sold Rs. 435.22 crore in Index Futures and Bought Rs. 1786.16 crore in index options, while in Stock Future they Sold Rs. 105.30 crore and Sold Rs 51.83 crore in stock options.
- ⇒ Among Index Option space, Highest Open Interest concentration was seen in 9000 & 9100 Strike price among the PE options. Where as among CE Options Highest Open Interest Concentration was seen in 9500 & 9400 Strike price.
- ⇒ Highest Open Interest Build Up among the PE options was seen in 9200 & 9000 Strike price. Among CE options highest build up was seen in 8500 & 8400 Strike price.

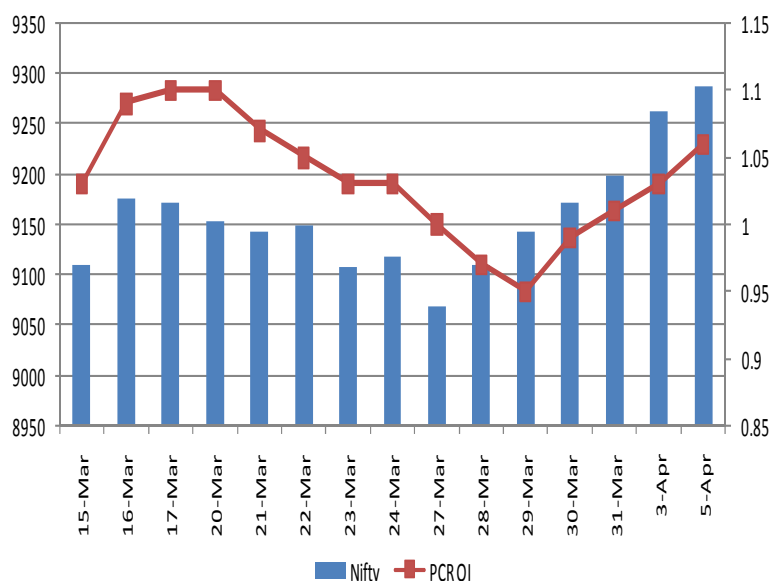
#### OI Concentration

| PUT OPTION   |               | CALL OPTION  |               |
|--------------|---------------|--------------|---------------|
| Strike Price | Open Interest | Strike Price | Open Interest |
| 9000         | 5664000       | 8400         | 5664000       |
| 9100         | 5209125       | 8500         | 5209125       |
| 9200         | 4252650       | 9300         | 4507875       |
| 8900         | 4003800       | 8300         | 4003800       |
| 8500         | 2596350       | 9500         | 3830700       |

#### Highest Change in OI

| PUT OPTION   |              | CALL OPTION  |              |
|--------------|--------------|--------------|--------------|
| Strike Price | Change in OI | Strike Price | Change in OI |
| 8900         | 956850       | 9300         | 831750       |
| 8500         | 95850        | 9200         | 346875       |
| 8700         | 89850        | 9250         | 155850       |
| 8500         | 58050        | 8500         | 94800        |
| 8950         | 19500        | 8900         | 23625        |

#### Nifty Future Price V/S PCR-OI



## Technical Trend

### Stock Analysis

| Long Build-up | Long Unwinding | Short Build-up | Short Covering |
|---------------|----------------|----------------|----------------|
| BIOCON        | ABIRLANUVO     | BHARTIARTL     | AJANTPHARM     |
| CAPF          | DISHTV         | GAIL           | COALINDIA      |
| DLF           | GRASIM         | HEXAWARE       | CUMMINSIND     |
| GODREJCP      | M&MFIN         | HINDUNILVR     | GLENMARK       |
| LICHSGFIN     | MUTHOOTFIN     | MOTHERSUMI     | LUPIN          |
| SUZLON        | NCC            | RELCAPITAL     | VEDL           |

### STATISTICS

#### Highest Premium

| SCRIPS    | Premium % | Price change % |
|-----------|-----------|----------------|
| INFIBEAM  | 1.06      | 0.78           |
| JSWENERGY | 0.86      | -1.53          |
| IFCI      | 0.68      | -1.66          |
| SOUTHBANK | 0.67      | -0.22          |
| CAPF      | 0.64      | 2.14           |

#### Highest Discount

| SCRIPS    | Premium % | Price change % |
|-----------|-----------|----------------|
| OFSS      | -4.09     | -0.12          |
| PNB       | -2.58     | 0.35           |
| BANKINDIA | -1.39     | -1.34          |
| CEATLTD   | -1.34     | -1.83          |
| DALMIABHA | -1.06     | 1.30           |

#### TOP 5 VOLUME GAINER FOR THE SESSION

| SCRIPS    | CP AS ON 11/04/2017 | CP AS ON 12/04/2017 | Change (%) | Vol AS ON 11/04/2017 | Vol AS ON 12/04/2017 | Change (%) |
|-----------|---------------------|---------------------|------------|----------------------|----------------------|------------|
| SUNPHARMA | 673.85              | 686                 | 1.80       | 2871                 | 10350                | 261%       |
| SUZLON    | 19.7                | 19.95               | 1.27       | 2589                 | 7977                 | 208%       |
| BIOCON    | 1115.75             | 1125.95             | 0.91       | 1261                 | 3585                 | 184%       |
| EICHERMOT | 25921.05            | 26440.2             | 2.00       | 1972                 | 5363                 | 172%       |
| INFRATEL  | 355.8               | 367.5               | 3.29       | 1784                 | 3977                 | 123%       |

#### TOP 5 VOLUME LOSER FOR THE SESSION

| SCRIPS     | CP AS ON 11/04/2017 | CP AS ON 12/04/2017 | Change (%) | Vol AS ON 11/04/2017 | Vol AS ON 12/04/2017 | Change (%) |
|------------|---------------------|---------------------|------------|----------------------|----------------------|------------|
| TATAPOWER  | 85.55               | 85.7                | 0.18       | 8552                 | 1902                 | -78%       |
| ADANIPOWER | 37.25               | 33.9                | -8.99      | 15411                | 3428                 | -78%       |
| TATAELXSI  | 1583.35             | 1558.6              | -1.56      | 3528                 | 1381                 | -61%       |
| PFC        | 164.6               | 162.8               | -1.09      | 18137                | 7275                 | -60%       |
| PTC        | 98.7                | 97.65               | -1.06      | 2809                 | 1260                 | -55%       |

## Technical Trend

### TOP 10 OPEN INTEREST GAINER FOR THE SESSION

| SCRIPS     | CP AS ON 11/04/2017 | CP AS ON 12/04/2017 | Change (%) | OI AS ON 11/04/2017 | OI AS ON 12/04/2017 | Change (%) |
|------------|---------------------|---------------------|------------|---------------------|---------------------|------------|
| SUZLON     | 19.7                | 19.95               | 1.27       | 165420000           | 225720000           | 36.45      |
| CAPF       | 780.9               | 798.3               | 2.23       | 732800              | 902400              | 23.14      |
| INDIANB    | 275.85              | 264.35              | -4.17      | 1236000             | 1428000             | 15.53      |
| TATASTEEL  | 489.7               | 479.7               | -2.04      | 25332000            | 27634000            | 9.09       |
| SRTRANSFIN | 1090.45             | 1072.3              | -1.66      | 1809600             | 1970400             | 8.89       |
| RELIANCE   | 1380.05             | 1360.7              | -1.40      | 17521500            | 19076000            | 8.87       |
| RELCAPITAL | 623.85              | 612                 | -1.90      | 12972000            | 14076000            | 8.51       |
| RDEL       | 68.85               | 65.4                | -5.01      | 10071000            | 10836000            | 7.60       |
| TORNTPOWER | 223.4               | 216.15              | -3.25      | 4125000             | 4437000             | 7.56       |
| ADANIPTS   | 335.65              | 329.25              | -1.91      | 14935000            | 16040000            | 7.40       |

### TOP 10 OPEN INTEREST LOSER FOR THE SESSION

| SCRIPS     | CP AS ON 11/04/2017 | CP AS ON 12/04/2017 | Change (%) | OI AS ON 11/04/2017 | OI AS ON 12/04/2017 | Change (%) |
|------------|---------------------|---------------------|------------|---------------------|---------------------|------------|
| ADANIPOWER | 37.25               | 33.9                | -8.99      | 153460000           | 127780000           | -16.73     |
| ESCORTS    | 551.9               | 546.45              | -0.99      | 1001000             | 894300              | -10.66     |
| DALMIABHA  | 2167.05             | 2169.65             | 0.12       | 316800              | 284700              | -10.13     |
| IBREALEST  | 91.8                | 98.9                | 7.73       | 27670000            | 25480000            | -7.91      |
| NCC        | 89.9                | 88.6                | -1.45      | 27984000            | 26000000            | -7.09      |
| ABIRLANUVO | 1565.6              | 1557.8              | -0.50      | 3607600             | 3352800             | -7.06      |
| MUTHOOTFIN | 388.7               | 384.15              | -1.17      | 1333500             | 1248000             | -6.41      |
| CEATLTD    | 1442.95             | 1416.55             | -1.83      | 2044700             | 1913800             | -6.40      |
| APOLLOTYRE | 228.85              | 222.4               | -2.82      | 14163000            | 13263000            | -6.35      |
| PVR        | 1558.05             | 1541.25             | -1.08      | 258000              | 242000              | -6.20      |

## Technical Trend

### Pivot Report– Nifty 50

| Symbol     | PClose  | Support3 | Support2 | Support1 | Pivot          | Resist1 | Resist2 | Resist3 |
|------------|---------|----------|----------|----------|----------------|---------|---------|---------|
| ACC        | 1494.6  | 1446.0   | 1461.0   | 1477.8   | <b>1492.8</b>  | 1509.5  | 1524.5  | 1541.3  |
| ADANIPTS   | 327.6   | 309.0    | 316.3    | 322.0    | <b>329.3</b>   | 334.9   | 342.2   | 347.9   |
| AMBUJACEM  | 249.1   | 239.9    | 243.2    | 246.2    | <b>249.5</b>   | 252.4   | 255.7   | 258.7   |
| ASIANPAINT | 1070.5  | 1042.9   | 1053.0   | 1061.7   | <b>1071.8</b>  | 1080.5  | 1090.6  | 1099.3  |
| AUOPHARMA  | 656.5   | 637.8    | 642.9    | 649.7    | <b>654.9</b>   | 661.7   | 666.8   | 673.6   |
| AXISBANK   | 506.0   | 482.2    | 492.7    | 499.4    | <b>509.9</b>   | 516.5   | 527.0   | 533.7   |
| BAJAJ-AUTO | 2839.5  | 2772.0   | 2789.5   | 2814.5   | <b>2832.0</b>  | 2857.0  | 2874.5  | 2899.5  |
| BANKBARODA | 172.4   | 166.0    | 168.6    | 170.5    | <b>173.1</b>   | 174.9   | 177.5   | 179.4   |
| BHARTIARTL | 350.8   | 337.6    | 341.5    | 346.1    | <b>350.0</b>   | 354.7   | 358.6   | 363.2   |
| BOSCHLTD   | 23362.4 | 21724.9  | 22187.5  | 22774.9  | <b>23237.5</b> | 23824.9 | 24287.5 | 24874.9 |
| BPCL       | 717.3   | 679.8    | 689.0    | 703.2    | <b>712.4</b>   | 726.6   | 735.8   | 750.0   |
| CIPLA      | 579.4   | 561.4    | 566.0    | 572.7    | <b>577.4</b>   | 584.1   | 588.7   | 595.4   |
| COALINDIA  | 290.0   | 284.2    | 286.1    | 288.1    | <b>290.0</b>   | 291.9   | 293.8   | 295.8   |
| DRREDDY    | 2644.9  | 2586.2   | 2600.8   | 2622.8   | <b>2637.4</b>  | 2659.4  | 2674.0  | 2696.0  |
| EICHERMOT  | 26422.5 | 25649.2  | 25834.8  | 26128.7  | <b>26314.3</b> | 26608.2 | 26793.8 | 27087.7 |
| GAIL       | 378.3   | 363.2    | 370.1    | 374.2    | <b>381.1</b>   | 385.2   | 392.1   | 396.2   |
| GRASIM     | 1072.4  | 1013.3   | 1033.6   | 1053.0   | <b>1073.2</b>  | 1092.6  | 1112.9  | 1132.3  |
| HCLTECH    | 831.7   | 819.5    | 823.3    | 827.5    | <b>831.2</b>   | 835.4   | 839.2   | 843.4   |
| HDFC       | 1466.7  | 1442.5   | 1451.3   | 1459.0   | <b>1467.7</b>  | 1475.4  | 1484.2  | 1491.9  |
| HDFCBANK   | 1443.7  | 1421.7   | 1428.6   | 1436.2   | <b>1443.1</b>  | 1450.6  | 1457.5  | 1465.1  |
| HEROMOTOCO | 3227.1  | 3175.0   | 3187.7   | 3207.4   | <b>3220.1</b>  | 3239.7  | 3252.4  | 3272.1  |
| HINDALCO   | 193.0   | 184.8    | 188.5    | 190.7    | <b>194.4</b>   | 196.6   | 200.3   | 202.5   |
| HINDUNILVR | 923.8   | 912.3    | 915.4    | 919.6    | <b>922.6</b>   | 926.8   | 929.9   | 934.1   |
| IBULHSGFIN | 936.7   | 899.7    | 909.9    | 923.3    | <b>933.4</b>   | 946.8   | 957.0   | 970.4   |
| ICICIBANK  | 280.8   | 269.5    | 273.8    | 277.3    | <b>281.6</b>   | 285.1   | 289.4   | 292.9   |
| INDUSINDBK | 1437.8  | 1396.9   | 1406.0   | 1421.9   | <b>1430.9</b>  | 1446.8  | 1455.9  | 1471.8  |
| INFRATEL   | 367.1   | 335.2    | 343.7    | 355.4    | <b>363.8</b>   | 375.5   | 384.0   | 395.7   |
| INFY       | 968.9   | 944.0    | 952.2    | 960.5    | <b>968.7</b>   | 977.1   | 985.3   | 993.6   |
| IOC        | 409.3   | 396.2    | 400.9    | 405.1    | <b>409.7</b>   | 413.9   | 418.6   | 422.8   |
| ITC        | 281.9   | 274.1    | 276.8    | 279.4    | <b>282.1</b>   | 284.6   | 287.3   | 289.9   |
| KOTAKBANK  | 879.4   | 864.3    | 869.0    | 874.2    | <b>878.8</b>   | 884.0   | 888.7   | 893.9   |
| LT         | 1702.8  | 1647.0   | 1661.7   | 1682.2   | <b>1696.9</b>  | 1717.4  | 1732.1  | 1752.6  |
| LUPIN      | 1439.5  | 1380.5   | 1394.3   | 1416.9   | <b>1430.7</b>  | 1453.3  | 1467.1  | 1489.7  |
| M&M        | 1280.0  | 1253.3   | 1261.1   | 1270.5   | <b>1278.3</b>  | 1287.7  | 1295.5  | 1304.9  |
| MARUTI     | 6154.5  | 5962.3   | 6044.5   | 6099.5   | <b>6181.7</b>  | 6236.7  | 6318.9  | 6373.9  |
| NTPC       | 165.0   | 159.5    | 161.9    | 163.4    | <b>165.8</b>   | 167.4   | 169.8   | 171.3   |
| ONGC       | 186.7   | 182.5    | 184.1    | 185.4    | <b>187.1</b>   | 188.4   | 190.0   | 191.3   |
| POWERGRID  | 197.6   | 189.7    | 192.9    | 195.2    | <b>198.4</b>   | 200.7   | 203.9   | 206.2   |
| RELIANCE   | 1354.0  | 1306.0   | 1328.6   | 1341.3   | <b>1363.9</b>  | 1376.6  | 1399.2  | 1411.9  |
| SBIN       | 290.2   | 281.3    | 285.2    | 287.7    | <b>291.6</b>   | 294.0   | 297.9   | 300.4   |
| SUNPHARMA  | 683.3   | 641.8    | 652.6    | 667.9    | <b>678.7</b>   | 694.0   | 704.8   | 720.1   |
| TATAMOTORS | 464.6   | 450.3    | 456.0    | 460.3    | <b>465.9</b>   | 470.2   | 475.9   | 480.2   |
| TATAMTRDVR | 284.9   | 274.6    | 278.8    | 281.8    | <b>286.0</b>   | 289.0   | 293.2   | 296.2   |
| TATAPOWER  | 85.6    | 82.1     | 83.1     | 84.3     | <b>85.3</b>    | 86.5    | 87.5    | 88.7    |
| TATASTEEL  | 477.4   | 454.9    | 465.4    | 471.4    | <b>482.0</b>   | 488.0   | 498.5   | 504.5   |
| TCS        | 2393.3  | 2329.8   | 2356.4   | 2374.8   | <b>2401.4</b>  | 2419.8  | 2446.4  | 2464.8  |
| TECHM      | 437.7   | 421.2    | 428.4    | 433.0    | <b>440.2</b>   | 444.8   | 452.0   | 456.6   |
| ULTRACEMCO | 4033.1  | 3953.6   | 3983.8   | 4008.5   | <b>4038.7</b>  | 4063.4  | 4093.6  | 4118.3  |
| WIPRO      | 500.8   | 486.2    | 492.8    | 496.8    | <b>503.3</b>   | 507.3   | 513.9   | 517.9   |
| YESBANK    | 1631.5  | 1580.1   | 1591.8   | 1611.6   | <b>1623.3</b>  | 1643.2  | 1654.9  | 1674.7  |
| ZEEL       | 530.5   | 511.3    | 519.7    | 525.1    | <b>533.5</b>   | 538.9   | 547.3   | 552.7   |

**Disclaimer Appendix****Analyst s holding in the Stock : Nil****Analyst s Certification:**

We analysts and the authors of this report, hereby certify that all of the views expressed in this research report accurately reflect our personal views about any and all of the subject issuer s or securities. We also certify that no part of our compensation was, is, or will be directly or indirectly related to the specific recommendation s or view s in this report. Analysts aren't registered as research analysts by FINRA and might not be an associated person of the BP Equities Pvt. Ltd. Institutional Equities.

**General Disclaimer**

This report has been prepared by the research department of BP EQUITIES Pvt. Ltd, is for information purposes only. This report is not construed as an offer to sell or the solicitation of an offer to buy or sell any security in any jurisdiction where such an offer or solicitation would be illegal.

BP EQUITIES Pvt. Ltd have exercised due diligence in checking the correctness and authenticity of the information contained herein, so far as it relates to current and historical information, but do not guarantee its accuracy or completeness. The opinions expressed are our current opinions as of the date appearing in the material and may be subject to change from time to time. Prospective investors are cautioned that any forward looking statement are not predictions and are subject to change without prior notice.

Recipients of this material should rely on their own investigations and take their own professional advice. BP EQUITIES Pvt. Ltd or any of its affiliates or employees shall not be in any way responsible for any loss or damage that may arise to any person from any inadvertent error in the information contained in this report. BP EQUITIES Pvt. Ltd. or any of its affiliates or employees do not provide, at any time, any express or implied warranty of any kind, regarding any matter pertaining to this report, including without limitation the implied warranties of merchantability, fitness for a particular purpose, and non-infringement. The recipients of this report should rely on their own investigations.

BP EQUITIES Pvt. Ltd and/or its affiliates and/or employees may have interests/ positions, financial or otherwise in the securities mentioned in this report. Opinions expressed are our current opinions as of the date appearing on this material only. While we endeavor to update on a reasonable basis the information discussed in this material, there may be regulatory, compliance, or other reasons that prevent us from doing so.

This report is not directed to or intended for display, downloading, printing, reproducing or for distribution to or use by any person in any locality, state and country or other jurisdiction where such distribution, publication or use would be contrary to the law or regulation or would subject to BP EQUITIES Pvt. Ltd or any of its affiliates to any registration or licensing requirement within such jurisdiction.

**Corporate Office:**

4th floor,  
Rustom Bldg,  
29, Veer Nariman Road, Fort,  
Mumbai-400001  
Phone- +91 22 6159 6464  
Fax-+91 22 6159 6160  
Website- [www.bpwealth.com](http://www.bpwealth.com)

**Registered Office:**

24/26, 1st Floor, Cama Building,  
Dalal street, Fort,  
Mumbai-400001  
  
BP Equities Pvt. Ltd.  
CIN No: U67120MH1997PTC107392