

NIFTY FUT : CONTINUE UPMOVE TOWARDS 9450-9600



Source: Falcon, BP Equities Research

Nifty futures closed 0.27% lower at 9415. Index gave a breakout from up sloping channel after consolidating around it which is a bullish signal for short term trend. RSI has earlier formed positive reversal and is now consolidating around down sloping trend line, a sustenance above the trend line will make the index resume its previous up move. Going ahead till index sustains above 9370 it is expected to continue its up move towards 9450-9600 while support past 9370 comes at 9270.

Intraday Nifty Future Resistance—9450/9550/9600 Support—9370/9320/9270

BANK NIFTY FUT : IMMEDIATE RESISTANCE AT 22850



Source: Falcon, BP Equities Research

Bank Nifty futures closed 0.76% lower at 22669. Index has earlier given breakout from a consolidation range but is failing to sustain the breakout, for index to continue its up move it needs to sustain above the level of 22850. RSI is forming negative divergence with price which is a bearish signal and suggests caution at higher levels. Going ahead index has immediate resistance at 22850, for index to continue its up move it needs to sustain above this level which if it does will open the way for 23250 while support comes at 22600-22200.

Intraday Bank Nifty Future Resistance—22850/23100/23250 Support—22600/22370/22200

Technical Trend

INTRADAY TRADER'S PICKS

Sr.No.	STOCK	CLOSE	S1	S2	S3	R1	R2	R3	RECOMMENDATION
1	MANPASAND	737.40	728	720	712	752	760	768	BUY ABOVE 740
2	MARALOVER	49.10	48.5	47.5	47	51.5	52.5	53	BUY ABOVE 50
3	OIL	318.80	315	310	306	325	330	334	BUY ABOVE 320
4	TECHM	442.25	438	432	426	452	458	464	BUY ABOVE 445
5	V2RETAIL	197.55	197	194	191	205	208	211	BUY ABOVE 201

Technical Trend

DERIVATIVES

INDICES SNAPSHOT

SCRIPS	CP AS ON 11/05/2017	CP AS ON 12/05/2017	Change (%)	OI AS ON 11/05/2017	OI AS ON 12/05/2017	Change (%)
BANKNIFTY	22842.15	22669.35	-0.76	3891160	3764000	-3.27
NIFTY	9439.85	9414.8	-0.27	22902975	22429125	-2.07
NIFTYIT	10269	10378	1.06	35550	36550	2.81

Derivative Highlights

- ⇒ Nifty Future closed with a premium of 14 points v/s a premium of 18 points in the previous session.
- ⇒ Nifty Future Open Interest decreased by 2.07%. BankNifty Future Open Interest decreased by 3.27%.
- ⇒ Nifty PCR - OI decreased from 1.25 to 1.24, Nifty PCR - Vol decreased from 1.36 to 1.30.
- ⇒ FII Bought 841.80 crore while DII Sold Rs. 710.83 crore in the Cash Segment. FII Sold Rs. 916.40 crore in Index Futures and Sold Rs. 122.33 crore in index options, while in Future they Sold Rs. 190.55 crore and Sold Rs 79.05 crore in stock options.
- ⇒ Among Index Option space, Highest Open Interest concentration was seen in 9300 & 9200 Strike price among the PE options. Where as among CE Options Highest Open Interest Concentration was seen in 9500 & 9400 Strike price.
- ⇒ Highest Open Interest Build Up among the PE options was seen in 9200 & 8800 Strike price. Among CE options highest build up was seen in 9500 & 9400 Strike price.

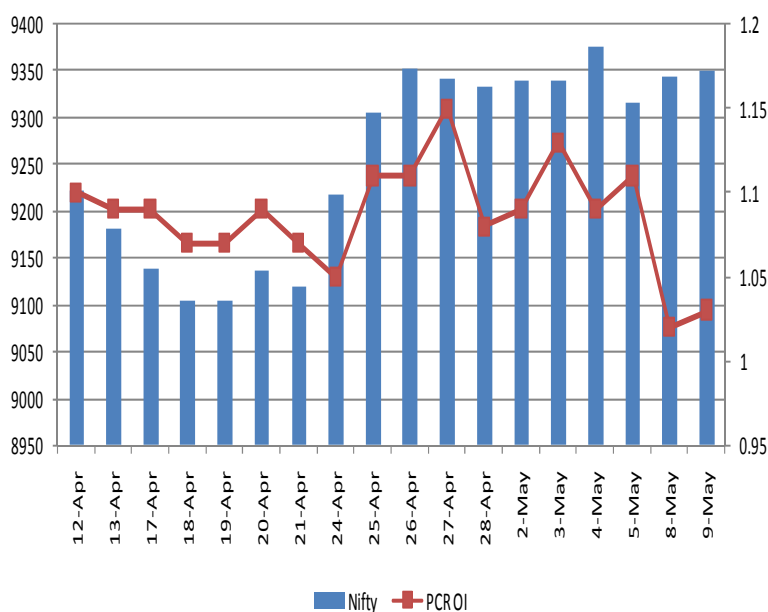
OI Concentration

PUT OPTION		CALL OPTION	
Strike Price	Open Interest	Strike Price	Open Interest
9300	7264125	9500	7080075
9200	5919975	9400	4419150
9000	4739550	9600	3420375
9100	4713750	9300	2320350
9400	3805500	9700	1785675

Highest Change in OI

PUT OPTION		CALL OPTION	
Strike Price	Change in OI	Strike Price	Change in OI
9200	438150	9500	396225
8800	110775	9400	203325
9100	62250	9450	118650
9350	48975	9650	79800
7500	10125	7500	45600

Nifty Future Price V/S PCR-OI



Technical Trend

Stock Analysis

Long Build-up	Long Unwinding	Short Build-up	Short Covering
ALBK	CENTURYTEX	IGL	DISHTV
DLF	ICICIBANK	L&TFH	HDIL
HINDUNILVR	LICHSGFIN	ORIENTBANK	MINDTREE
JSWSTEEL	SUZLON	TATAGLOBAL	PCJEWELLER
PAGEIND	PTC	TORNTPHARM	SUNPHARMA
RAYMOND	MGL	YESBANK	WIPRO

STATISTICS

Highest Premium

SCRIPS	Premium %	Price change %
GMRINFRA	0.90	-0.60
JPASSOCIAT	0.79	-2.32
PAGEIND	0.76	1.01
SUZLON	0.72	-2.35
ADANIPOWER	0.66	-1.94

Highest Discount

SCRIPS	Premium %	Price change %
CEATLTD	-3.20	-2.03
INFIBEAM	-1.65	-0.70
ORIENTBANK	-1.26	-6.97
CASTROLIND	-0.87	-0.50
JUSTDIAL	-0.82	-1.93

TOP 5 VOLUME GAINER FOR THE SESSION

SCRIPS	CP AS ON 10/05/2017	CP AS ON 11/05/2017	Change (%)	Vol AS ON 10/05/2017	Vol AS ON 11/05/2017	Change (%)
GLENMARK	907	762.4	-15.94	2272	24278	969%
YESBANK	1584.3	1488.2	-6.07	10201	77472	659%
PEL	2551.05	2613.4	2.44	783	4114	425%
INFY	948.35	968.5	2.12	4185	17096	309%
ORIENTBANK	174.35	160.85	-7.74	3176	12814	303%

TOP 5 VOLUME LOSER FOR THE SESSION

SCRIPS	CP AS ON 09/05/2017	CP AS ON 10/05/2017	Change (%)	Vol AS ON 09/05/2017	Vol AS ON 10/05/2017	Change (%)
GODFRYPHLP	1295.3	1261.3	-2.62	2413	519	-78%
CANBK	369.25	363.9	-1.45	12825	3182	-75%
MFSL	654.55	646.55	-1.22	1883	528	-72%
UJJIVAN	359.65	350.2	-2.63	1423	429	-70%
GRANULES	146.8	143.95	-1.94	2111	686	-68%

Technical Trend

TOP 10 OPEN INTEREST GAINER FOR THE SESSION

SCRIPS	CP AS ON 10/05/2017	CP AS ON 11/05/2017	Change (%)	OI AS ON 10/05/2017	OI AS ON 11/05/2017	Change (%)
GLENMARK	907	762.4	-15.94	3014900	5488700	82.05
PEL	2551.05	2613.4	2.44	452400	681900	50.73
ORIENTBANK	174.35	160.85	-7.74	17310000	22956000	32.62
YESBANK	1584.3	1488.2	-6.07	7779800	10017350	28.76
INFIBEAM	1005.05	982.1	-2.28	1425200	1567600	9.99
NESTLEIND	6852.9	6829.1	-0.35	62200	68400	9.97
TORNTPOWER	224	213.5	-4.69	3417000	3756000	9.92
GAIL	410.45	410.35	-0.02	13076000	14336000	9.64
ALBK	89.2	90.35	1.29	17660000	19280000	9.17
MRPL	133.25	129.7	-2.66	3429000	3735000	8.92

TOP 10 OPEN INTEREST LOSER FOR THE SESSION

SCRIPS	CP AS ON 10/05/2017	CP AS ON 11/05/2017	Change (%)	OI AS ON 10/05/2017	OI AS ON 11/05/2017	Change (%)
CANBK	369.25	363.9	-1.45	22331244	20468508	-8.34
SYNDIBANK	91.4	90.25	-1.26	19377000	17802000	-8.13
IBREALEST	166.7	171.85	3.09	26660000	24500000	-8.10
PCJEWELLER	444.65	450	1.20	1279500	1176000	-8.09
GODFRYPHLP	1295.3	1261.3	-2.62	446000	411500	-7.74
CEATLTD	1594.85	1574.7	-1.26	2393300	2210600	-7.63
CADILAHC	493.85	487.65	-1.26	2707200	2500800	-7.62
HDIL	94.75	95.5	0.79	29616000	27360000	-7.62
INDIANB	357.35	354.9	-0.69	2726000	2542000	-6.75
DISHTV	96.1	98.2	2.19	23380000	21931000	-6.20

Technical Trend

Pivot Report– Nifty 50

Symbol	PClose	Support3	Support2	Support1	Pivot	Resist1	Resist2	Resist3
ACC	1679.9	1613.6	1634.9	1657.4	1678.7	1701.1	1722.4	1744.9
ADANIPTS	358.0	347.1	350.3	354.1	357.3	361.1	364.3	368.1
AMBUJACEM	258.4	252.0	253.9	256.2	258.1	260.3	262.2	264.5
ASIANPAINT	1133.0	1061.6	1094.3	1113.6	1146.3	1165.6	1198.3	1217.6
AUOPHARMA	623.7	603.0	608.0	615.9	620.9	628.8	633.8	641.7
AXISBANK	503.0	478.2	488.7	495.9	506.4	513.5	524.0	531.2
BAJAJ-AUTO	3004.8	2928.6	2949.3	2977.1	2997.8	3025.5	3046.2	3074.0
BANKBARODA	186.4	177.4	181.1	183.8	187.5	190.1	193.8	196.5
BHARTIARTL	365.1	352.2	356.8	361.0	365.6	369.8	374.4	378.6
BOSCHLTD	23485.8	23017.5	23196.9	23341.3	23520.7	23665.1	23844.5	23988.9
BPCL	733.2	715.8	720.4	726.8	731.4	737.7	742.3	748.7
CIPLA	568.0	547.4	552.3	560.1	565.0	572.8	577.7	585.5
COALINDIA	276.6	271.3	273.0	274.8	276.4	278.2	279.9	281.7
DRREDDY	2580.8	2437.1	2479.5	2530.2	2572.6	2623.2	2665.6	2716.3
EICHERMOT	29178.4	27770.2	28292.5	28735.4	29257.7	29700.7	30223.0	30665.9
GAIL	409.2	389.3	394.7	401.9	407.3	414.5	419.9	427.1
GRASIM	1149.2	1124.0	1134.8	1142.0	1152.8	1160.0	1170.8	1178.0
HCLTECH	847.7	832.6	835.8	841.7	845.0	850.9	854.1	860.0
HDFC	1549.8	1510.5	1524.9	1537.4	1551.8	1564.2	1578.6	1591.1
HDFCBANK	1551.7	1518.9	1527.6	1539.6	1548.3	1560.3	1569.0	1581.0
HEROMOTOCO	3541.5	3395.8	3429.8	3485.7	3519.7	3575.6	3609.6	3665.5
HINDALCO	191.1	182.2	185.7	188.4	191.9	194.6	198.1	200.8
HINDUNILVR	980.2	953.2	961.7	971.0	979.5	988.7	997.2	1006.5
IBULHSGFIN	1053.8	1004.9	1022.4	1038.1	1055.7	1071.4	1088.9	1104.6
ICICIBANK	296.6	285.8	289.6	293.1	296.8	300.3	304.1	307.6
INDUSINDBK	1411.8	1382.3	1393.4	1402.6	1413.7	1422.9	1434.0	1443.2
INFRATEL	374.7	360.5	365.1	369.9	374.6	379.4	384.0	388.8
INFY	964.3	940.6	946.0	955.1	960.6	969.7	975.1	984.2
IOC	434.9	420.9	424.6	429.7	433.4	438.5	442.2	447.3
ITC	275.0	270.3	272.2	273.6	275.4	276.8	278.7	280.1
KOTAKBANK	954.7	916.4	927.0	940.8	951.4	965.3	975.9	989.7
LT	1740.6	1695.4	1711.0	1725.8	1741.4	1756.2	1771.8	1786.6
LUPIN	1254.0	1224.0	1234.5	1244.2	1254.7	1264.4	1274.9	1284.6
M&M	1367.9	1344.1	1352.9	1360.4	1369.2	1376.7	1385.5	1393.0
MARUTI	6730.2	6574.5	6632.7	6681.5	6739.7	6788.5	6846.7	6895.5
NTPC	158.9	153.8	155.9	157.4	159.5	161.0	163.1	164.6
ONGC	184.9	181.4	182.7	183.8	185.1	186.2	187.5	188.6
POWERGRID	206.3	200.7	203.2	204.7	207.2	208.7	211.2	212.7
RELIANCE	1350.5	1321.7	1332.9	1341.7	1352.8	1361.6	1372.8	1381.6
SBIN	297.9	288.5	292.2	295.1	298.8	301.7	305.4	308.3
SUNPHARMA	655.1	634.2	639.0	647.1	651.9	659.9	664.7	672.8
TATAMOTORS	430.9	421.3	424.4	427.6	430.7	434.0	437.1	440.3
TATAMTRDVR	264.8	258.9	260.8	262.8	264.7	266.7	268.6	270.6
TATAPOWER	82.3	81.1	81.5	81.9	82.4	82.8	83.2	83.6
TATASTEEL	436.7	420.3	426.4	431.6	437.7	442.9	449.0	454.2
TCS	2360.7	2280.7	2300.4	2330.5	2350.2	2380.4	2400.1	2430.2
TECHM	442.3	426.5	430.6	436.4	440.5	446.4	450.5	456.3
ULTRACEMCO	4404.4	4331.7	4352.5	4378.4	4399.2	4425.1	4445.9	4471.8
WIPRO	507.1	501.3	502.8	504.9	506.4	508.5	510.0	512.1
YESBANK	1483.1	1315.1	1392.2	1437.6	1514.7	1560.2	1637.3	1682.7
ZEEL	526.4	499.9	512.1	519.3	531.5	538.6	550.8	558.0



BP WEALTH

Technical Research Desk

Tel: +91 22 61596173

Institutional Sales Desk

Tel: +91 22 61596403/04/05

Disclaimer Appendix

Analyst s holding in the Stock : Nil

Analyst s Certification:

We analysts and the authors of this report, hereby certify that all of the views expressed in this research report accurately reflect our personal views about any and all of the subject issuer s or securities. We also certify that no part of our compensation was, is, or will be directly or indirectly related to the specific recommendation s or view s in this report. Analysts aren't registered as research analysts by FINRA and might not be an associated person of the BP Equities Pvt. Ltd. Institutional Equities.

General Disclaimer

This report has been prepared by the research department of BP EQUITIES Pvt. Ltd, is for information purposes only. This report is not construed as an offer to sell or the solicitation of an offer to buy or sell any security in any jurisdiction where such an offer or solicitation would be illegal.

BP EQUITIES Pvt. Ltd have exercised due diligence in checking the correctness and authenticity of the information contained herein, so far as it relates to current and historical information, but do not guarantee its accuracy or completeness. The opinions expressed are our current opinions as of the date appearing in the material and may be subject to change from time to time. Prospective investors are cautioned that any forward looking statement are not predictions and are subject to change without prior notice.

Recipients of this material should rely on their own investigations and take their own professional advice. BP EQUITIES Pvt. Ltd or any of its affiliates or employees shall not be in any way responsible for any loss or damage that may arise to any person from any inadvertent error in the information contained in this report. BP EQUITIES Pvt. Ltd. or any of its affiliates or employees do not provide, at any time, any express or implied warranty of any kind, regarding any matter pertaining to this report, including without limitation the implied warranties of merchantability, fitness for a particular purpose, and non-infringement. The recipients of this report should rely on their own investigations.

BP EQUITIES Pvt. Ltd and/or its affiliates and/or employees may have interests/ positions, financial or otherwise in the securities mentioned in this report. Opinions expressed are our current opinions as of the date appearing on this material only. While we endeavor to update on a reasonable basis the information discussed in this material, there may be regulatory, compliance, or other reasons that prevent us from doing so.

This report is not directed to or intended for display, downloading, printing, reproducing or for distribution to or use by any person in any locality, state and country or other jurisdiction where such distribution, publication or use would be contrary to the law or regulation or would subject to BP EQUITIES Pvt. Ltd or any of its affiliates to any registration or licensing requirement within such jurisdiction.

Corporate Office:

4th floor,
Rustom Bldg,
29, Veer Nariman Road, Fort,
Mumbai-400001
Phone- +91 22 6159 6464
Fax-+91 22 6159 6160
Website- www.bpwealth.com

Registered Office:

24/26, 1st Floor, Cama Building,
Dalal street, Fort,
Mumbai-400001
BP Equities Pvt. Ltd.
CIN No: U67120MH1997PTC107392