

NIFTY FUT : IMMEDIATE SUPPORT AT 9590



Source: Falcon, BP Equities Research

Nifty futures closed 0.23% higher at 9638. Index formed an indecisive candlestick pattern for second consecutive day which suggests indecision among market participants regarding the direction of the market. Earlier Index has violated lower end of the sideways range of 9690-9620 in which it was moving for past few sessions, a sustenance below 9620 will call for profit booking towards 9550-9520 while the range of 9650-9690 will act as resistance.

Intraday Nifty Future

Resistance—9650/9690/9750

Support—9590/9550/9520

BANK NIFTY FUT : IMMEDIATE SUPPORT AT 23450



Source: Falcon, BP Equities Research

Bank Nifty futures closed 0.16% lower at 23486. Index formed an indecisive candlestick for second consecutive day which suggests indecision among market participants regarding the direction of the market. Going index has immediate support in the range of 23450-23300, for index to continue its up move it needs to sustain above this range while resistance comes at 23650-23800.

Intraday Bank Nifty Future

Resistance—23570/ 23650/23720

Support—23450/23300/23100

Technical Trend

INTRADAY TRADER'S PICKS

Sr.No.	STOCK	CLOSE	S1	S2	S3	R1	R2	R3	RECOMMENDATION
1	INDHOTEL	128.10	126	123	120	132	135	138	BUY ABOVE 129
2	INTELLECT	120.75	119	116	113	125	128	131	BUY ABOVE 122
3	NCLIND	211.25	209	205	201	219	223	227	BUY ABOVE 214
4	PNB	152	150	147	144	156	159	159	BUY ABOVE 153
5	ZEEL	513.15	508	501	495	522	528	534	BUY ABOVE 515

Technical Trend

DERIVATIVES

INDICES SNAPSHOT

SCRIPS	CP AS ON 13/06/2017	CP AS ON 14/06/2017	Change (%)	OI AS ON 13/06/2017	OI AS ON 14/06/2017	Change (%)
BANKNIFTY	23449	23486.4	0.16	2832360	2736720	-3.38
NIFTY	9615.1	9637.6	0.23	23522400	23223825	-1.27
NIFTYIT	10363	10405	0.41	33050	33850	2.42

Derivative Highlights

- ⇒ Nifty Future closed with a premium of 20 points v/s a premium of 7 points.
- ⇒ Nifty Future Open Interest decreased by 1.27%. BankNifty Future Open Interest decreased by 3.38%.
- ⇒ Nifty PCR - OI increased from 1.15 to 1.20, Nifty PCR - Vol increased from 1.06 to 1.07
- ⇒ FII Sold Rs 161.13 crore while DII Bought Rs. 71.65 crore in the Cash Segment. FII Bought Rs. 150.19 crore in Index Futures and Bought Rs. 668.26 crore in index options, while in Future they Sold Rs. 309.88 crore and Sold Rs 7.77 crore in stock options.
- ⇒ Among Index Option space, Highest Open Interest concentration was seen in 9500 & 9400 Strike price among the PE options. Where as among CE Options Highest Open Interest Concentration was seen in 9700 & 9600 Strike price.
- ⇒ Highest Open Interest Build Up among the PE options was seen in 9600 & 9450 Strike price. Among CE options highest build up was seen in 9850 & 9750 Strike price.

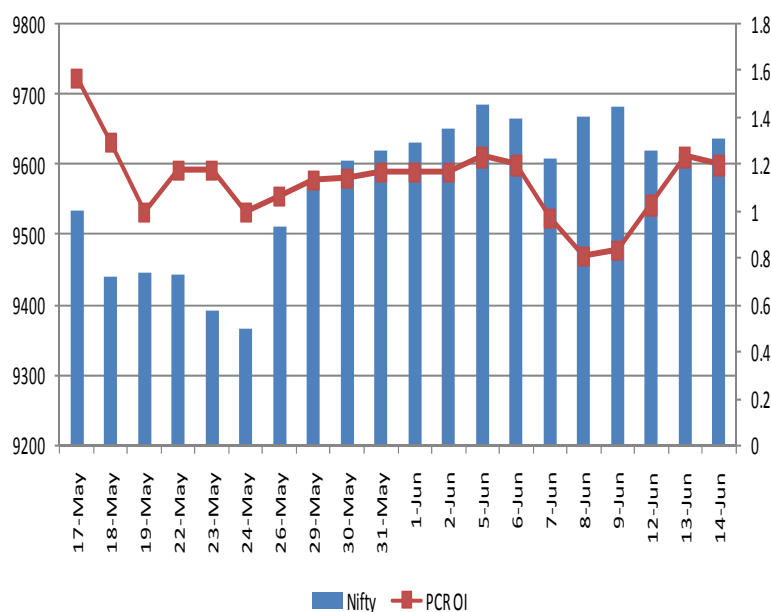
OI Concentration

PUT OPTION		CALL OPTION	
Strike Price	Open Interest	Strike Price	Open Interest
9500	7251600	9700	5953125
9600	6144150	9600	4657950
9400	5336250	9800	4464225
9300	3701775	10000	3115275
9000	3424725	9900	2681325

Highest Change in OI

PUT OPTION		CALL OPTION	
Strike Price	Change in OI	Strike Price	Change in OI
9600	564150	9850	116025
9450	552525	9750	42975
9550	234375	10200	41550
9000	74250	9950	30900
9500	69975	9500	25200

Nifty Future Price V/S PCR-OI



Technical Trend

Stock Analysis

Long Build-up	Long Unwinding	Short Build-up	Short Covering
AXISBANK	BAJFINANCE	BAJAJ-AUTO	ASIANPAINT
BHARATFORG	CIPLA	BPCL	ENGINERSIN
DRREDDY	HINDALCO	BRITANNIA	HEXAWARE
GODREJIND	JUBLFOOD	CENTURYTEX	LT
INFY	SAIL	ITC	ONGC
SIEMENS	TVSMOTOR	RECLTD	RELIANCE

STATISTICS

Highest Premium

SCRIPS	Premium %	Price change %
JPASSOCIAT	1.10	1.87
DLF	0.72	2.30
BALRAMCHIN	0.66	-1.76
JSWENERGY	0.64	-0.40
BHARTIARTL	0.63	0.91

Highest Discount

SCRIPS	Premium %	Price change %
PAGEIND	-1.87	2.25
RBLBANK	-1.24	0.31
INFIBEAM	-0.92	0.37
BIOCON	-0.90	0.28
APOLLOTYRE	-0.83	0.93

TOP 5 VOLUME GAINER FOR THE SESSION

SCRIPS	CP AS ON 13/06/2017	CP AS ON 14/06/2017	Change (%)	Vol AS ON 13/06/2017	Vol AS ON 14/06/2017	Change (%)
RELIANCE	1317.2	1358.9	3.17	5805	29467	408%
ALBK	67.2	72.2	7.44	1191	4746	298%
DRREDDY	2638.85	2675.5	1.39	1882	6419	241%
HEXAWARE	235.85	236.3	0.19	1771	5584	215%
ESCORTS	744.6	720.75	-3.20	1363	4150	204%

TOP 5 VOLUME LOSER FOR THE SESSION

SCRIPS	CP AS ON 13/06/2017	CP AS ON 14/06/2017	Change (%)	Vol AS ON 13/06/2017	Vol AS ON 14/06/2017	Change (%)
DCBBANK	207.35	207.1	-0.12	3403	1095	-68%
ADANIENIT	132.95	131.9	-0.79	5221	1909	-63%
SUNPHARMA	537.75	540.85	0.58	16051	6024	-62%
MCDOWELL-N	2379.7	2372.85	-0.29	3561	1337	-62%
GLENMARK	632.45	635.45	0.47	3916	1672	-57%

Technical Trend

TOP 10 OPEN INTEREST GAINER FOR THE SESSION

SCRIPS	CP AS ON 13/06/2017	CP AS ON 14/06/2017	Change (%)	OI AS ON 13/06/2017	OI AS ON 14/06/2017	Change (%)
YESBANK	1496.9	1456.3	-2.71	7764400	8918350	14.86
GMRINFRA	18.9	19.4	2.65	232335000	256635000	10.46
SYNDIBANK	77.65	81	4.31	17190000	18819000	9.48
GODREJIND	623.35	647.6	3.89	1734000	1881000	8.48
BANKINDIA	135.65	138.9	2.40	35310000	38244000	8.31
JUSTDIAL	403.65	410.15	1.61	4227600	4510800	6.70
RBLBANK	509.35	511.65	0.45	10283000	10929000	6.28
M&MFIN	346.5	351.95	1.57	11325000	11980000	5.78
BEML	1314.3	1350.75	2.77	2697000	2836200	5.16
SINTEX	25.15	24.65	-1.99	21717000	22800000	4.99

TOP 10 OPEN INTEREST LOSER FOR THE SESSION

SCRIPS	CP AS ON 13/06/2017	CP AS ON 14/06/2017	Change (%)	OI AS ON 13/06/2017	OI AS ON 14/06/2017	Change (%)
CHOLAFIN	1099.15	1096.65	-0.23	427000	387000	-9.37
HDIL	86.25	89.85	4.17	29608000	27568000	-6.89
CEATLTD	1855	1851.85	-0.17	1933400	1815100	-6.12
MCX	1049.7	1071.65	2.09	1801000	1693000	-6.00
IBREALEST	182.25	186.35	2.25	26240000	24920000	-5.03
AJANTPHARM	1551.9	1589.05	2.39	401200	381200	-4.99
RELIANCE	1317.2	1358.9	3.17	16956500	16180000	-4.58
OFSS	3658.65	3637.2	-0.59	113550	108600	-4.36
MRF	72430.95	71465.1	-1.33	41385	39615	-4.28
BIOCON	1010.2	1010.55	0.03	4572600	4382400	-4.16

Technical Trend

Pivot Report– Nifty 50

Symbol	PClose	Support3	Support2	Support1	Pivot	Resist1	Resist2	Resist3
ACC	1597.9	1547.4	1566.0	1581.9	1600.5	1616.4	1635.0	1650.9
ADANIPTS	359.5	352.0	354.0	356.8	358.8	361.6	363.6	366.4
AMBUJACEM	234.1	224.3	226.5	230.3	232.5	236.3	238.5	242.3
ASIANPAINT	1142.0	1099.0	1108.9	1125.4	1135.3	1151.8	1161.7	1178.3
AUOPHARMA	602.1	583.9	590.2	596.1	602.4	608.3	614.6	620.5
AXISBANK	509.5	494.4	498.0	503.7	507.3	513.1	516.7	522.4
BAJAJ-AUTO	2825.2	2764.8	2782.4	2803.8	2821.4	2842.7	2860.3	2881.7
BANKBARODA	172.8	165.0	167.4	170.1	172.6	175.3	177.7	180.4
BHARTIARTL	365.5	354.9	358.2	361.9	365.2	368.9	372.2	375.9
BOSCHLTD	24384.2	23807.6	23928.9	24156.5	24277.8	24505.4	24626.7	24854.3
BPCL	692.0	676.7	683.1	687.5	693.9	698.3	704.7	709.1
CIPLA	539.9	514.5	525.4	532.7	543.6	550.8	561.7	569.0
COALINDIA	257.1	251.9	254.0	255.5	257.6	259.2	261.3	262.8
DRREDDY	2669.3	2589.9	2617.6	2643.5	2671.2	2697.1	2724.8	2750.7
EICHERMOT	29049.5	28612.6	28766.9	28908.2	29062.6	29203.9	29358.2	29499.5
GAIL	381.1	373.0	376.0	378.5	381.5	384.0	387.0	389.5
HCLTECH	853.7	829.4	835.2	844.4	850.2	859.5	865.3	874.5
HDFC	1651.1	1616.7	1630.4	1640.7	1654.4	1664.7	1678.4	1688.7
HDFCBANK	1671.2	1652.5	1659.8	1665.5	1672.7	1678.4	1685.7	1691.4
HEROMOTOCO	3789.1	3700.5	3725.8	3757.4	3782.7	3814.4	3839.7	3871.3
HINDALCO	200.2	192.4	194.3	197.2	199.1	202.1	204.0	206.9
HINDUNILVR	1113.7	1073.3	1083.8	1098.7	1109.2	1124.1	1134.6	1149.5
IBULHSGFIN	1160.9	1129.5	1137.4	1149.1	1157.0	1168.8	1176.7	1188.4
ICICIBANK	319.1	308.5	312.0	315.5	319.0	322.5	326.0	329.5
INDUSINDBK	1500.1	1467.9	1476.5	1488.3	1497.0	1508.8	1517.4	1529.2
INFRATEL	386.1	376.6	379.0	382.6	385.0	388.5	390.9	394.5
INFY	958.6	941.9	946.5	952.6	957.2	963.3	967.9	974.0
IOC	420.7	410.2	413.8	417.2	420.8	424.2	427.8	431.2
ITC	299.9	290.5	294.8	297.3	301.7	304.2	308.5	311.0
KOTAKBANK	968.1	954.2	958.6	963.3	967.7	972.5	976.9	981.6
LT	1764.5	1705.8	1720.3	1742.4	1756.9	1778.9	1793.4	1815.5
LUPIN	1181.0	1155.2	1165.3	1173.2	1183.3	1191.2	1201.3	1209.2
M&M	1405.2	1361.5	1381.3	1393.3	1413.1	1425.0	1444.8	1456.8
MARUTI	7351.1	7263.9	7297.9	7324.5	7358.5	7385.1	7419.1	7445.7
NTPC	160.0	156.9	157.7	158.8	159.6	160.7	161.5	162.6
ONGC	169.5	166.5	167.3	168.4	169.2	170.3	171.1	172.2
POWERGRID	210.5	205.5	207.5	209.0	211.0	212.5	214.5	216.0
RELIANCE	1357.5	1284.8	1300.4	1328.9	1344.5	1373.0	1388.6	1417.1
SBIN	284.2	278.7	280.7	282.4	284.4	286.1	288.1	289.8
SUNPHARMA	539.6	526.0	529.3	534.4	537.7	542.8	546.1	551.2
TATAMOTORS	452.0	441.9	444.5	448.2	450.8	454.6	457.2	460.9
TATAMTRDVR	275.2	268.0	270.9	273.1	276.0	278.1	281.0	283.2
TATAPOWER	77.6	75.8	76.3	76.9	77.4	78.1	78.6	79.2
TATASTEEL	502.7	490.7	495.9	499.3	504.5	507.9	513.1	516.5
TCS	2470.2	2437.1	2446.1	2458.1	2467.1	2479.1	2488.1	2500.1
TECHM	396.7	384.5	388.2	392.5	396.2	400.5	404.2	408.5
ULTRACEMCO	4052.9	3905.2	3946.1	3999.5	4040.4	4093.8	4134.7	4188.1
VEDL	236.0	228.2	231.0	233.5	236.2	238.7	241.5	244.0
WIPRO	256.1	242.8	247.6	251.8	256.6	260.8	265.6	269.8
YESBANK	1449.0	1374.7	1409.8	1429.4	1464.6	1484.2	1519.3	1538.9
ZEEL	513.2	500.8	503.7	508.4	511.3	516.1	519.0	523.7



BP WEALTH

Technical Research Desk

Tel: +91 22 61596173

Institutional Sales Desk

Tel: +91 22 61596403/04/05

Disclaimer Appendix

Analyst s holding in the Stock : Nil

Analyst s Certification:

We analysts and the authors of this report, hereby certify that all of the views expressed in this research report accurately reflect our personal views about any and all of the subject issuer s or securities. We also certify that no part of our compensation was, is, or will be directly or indirectly related to the specific recommendation s or view s in this report. Analysts aren't registered as research analysts by FINRA and might not be an associated person of the BP Equities Pvt. Ltd. Institutional Equities.

General Disclaimer

This report has been prepared by the research department of BP EQUITIES Pvt. Ltd, is for information purposes only. This report is not construed as an offer to sell or the solicitation of an offer to buy or sell any security in any jurisdiction where such an offer or solicitation would be illegal.

BP EQUITIES Pvt. Ltd have exercised due diligence in checking the correctness and authenticity of the information contained herein, so far as it relates to current and historical information, but do not guarantee its accuracy or completeness. The opinions expressed are our current opinions as of the date appearing in the material and may be subject to change from time to time. Prospective investors are cautioned that any forward looking statement are not predictions and are subject to change without prior notice.

Recipients of this material should rely on their own investigations and take their own professional advice. BP EQUITIES Pvt. Ltd or any of its affiliates or employees shall not be in any way responsible for any loss or damage that may arise to any person from any inadvertent error in the information contained in this report. BP EQUITIES Pvt. Ltd. or any of its affiliates or employees do not provide, at any time, any express or implied warranty of any kind, regarding any matter pertaining to this report, including without limitation the implied warranties of merchantability, fitness for a particular purpose, and non-infringement. The recipients of this report should rely on their own investigations.

BP EQUITIES Pvt. Ltd and/or its affiliates and/or employees may have interests/ positions, financial or otherwise in the securities mentioned in this report. Opinions expressed are our current opinions as of the date appearing on this material only. While we endeavor to update on a reasonable basis the information discussed in this material, there may be regulatory, compliance, or other reasons that prevent us from doing so.

This report is not directed to or intended for display, downloading, printing, reproducing or for distribution to or use by any person in any locality, state and country or other jurisdiction where such distribution, publication or use would be contrary to the law or regulation or would subject to BP EQUITIES Pvt. Ltd or any of its affiliates to any registration or licensing requirement within such jurisdiction.

Corporate Office:

4th floor,
Rustom Bldg,
29, Veer Nariman Road, Fort,
Mumbai-400001
Phone- +91 22 6159 6464
Fax-+91 22 6159 6160
Website- www.bpwealth.com

Registered Office:

24/26, 1st Floor, Cama Building,
Dalal street, Fort,
Mumbai-400001
BP Equities Pvt. Ltd.
CIN No: U67120MH1997PTC107392