

## NIFTY FUT : IMMEDIATE RESISTANCE AT 9140



Source: Falcon, BP Equities Research

Nifty futures closed 0.07% higher at 9109. Index had a range bound session. Price has earlier surpassed the down sloping trend line and made a new high which is close to the previous high made in March'15, for index to continue its up move it needs to sustain above previous high of 9120 which if it does will continue the up move towards 9240. Going ahead index has immediate resistance at 9140, for index to continue its up move it needs to sustain above this level which if it does will open the way for 9220 while support comes at 9060-8990.

Intraday Nifty Future                      Resistance—9140/9180/9240                      Support—9060/8990/8900

## BANK NIFTY FUT : RESISTANCE AT 21250



Source: Falcon, BP Equities Research

Bank Nifty futures closed 0.36% higher at 21223. Index had a range bound session of trade. Price has given a breakout form flag a bullish continuation pattern after which it is expected to resume its up move. Going ahead index has immediate resistance at 21250, a sustenance above this level will continue its up move towards 22050 in short term while support comes at 20900-20750.

Intraday Bank Nifty Future                      Resistance—21250/21500/21700                      Support—20900/20750/20550

## Technical Trend

### INTRADAY TRADER'S PICKS

Sr.No.	STOCK	CLOSE	S1	S2	S3	R1	R2	R3	RECOMMENDATION
1	ADANIENT	101.20	99.5	98	97	104.5	106	107	<b>BUY ABOVE 102</b>
2	COSMOFILMS	367.25	362	357	352	376	381	386	<b>BUY ABOVE 369</b>
3	GAYAPROJ	139.70	137	134	131	145	148	151	<b>BUYT ABOVE 141</b>
4	HAVELLS	432.4	428	423	418	440	445	450	<b>BUY ABOVE 434</b>
5	PNB	145.4	143	140	137	151	154	157	<b>BUY ABOVE 147</b>

## Technical Trend

### DERIVATIVES

#### INDICES SNAPSHOT

SCRIPS	CP AS ON 14/03/2017	CP AS ON 15/03/2017	Change (%)	OI AS ON 14/03/2017	OI AS ON 15/03/2017	Change (%)
BANKNIFTY	21146.7	21222.6	0.36	2563440	2556600	-0.27
NIFTY	9103	9109.3	0.07	31292175	31565850	0.87
NIFTYIT	10898	10711	-1.72	46400	52500	13.15

#### Derivative Highlights

- ⇒ Nifty Future closed with a premium of 24 points v/s a premium of 16 points in the previous session.
- ⇒ Nifty Future Open Interest increased by 0.87%. BankNifty Future Open Interest decreased by 0.27%
- ⇒ Nifty PCR - OI increased from 0.96 to 1.03, Nifty PCR - Vol increased from 0.94 to 0.89
- ⇒ FII Bought 1141.13 crore while DII Bought Rs. 126.75 crore in the Cash Segment. FII Sold Rs. 236.99 crore in Index Futures and Bought Rs. 1025.09 crore in index options, while in Stock Future they Sold Rs. 378.88 crore and Sold Rs 94.30 crore in stock options.
- ⇒ Among Index Option space, Highest Open Interest concentration was seen in 8800 & 8900 Strike price among the PE options. Where as among CE Options Highest Open Interest Concentration was seen in 9200 & 9500 Strike price.
- ⇒ Highest Open Interest Build Up among the PE options was seen in 8800 & 8300 Strike price. Among CE options highest build up was seen in 9250 & 9350 Strike price.

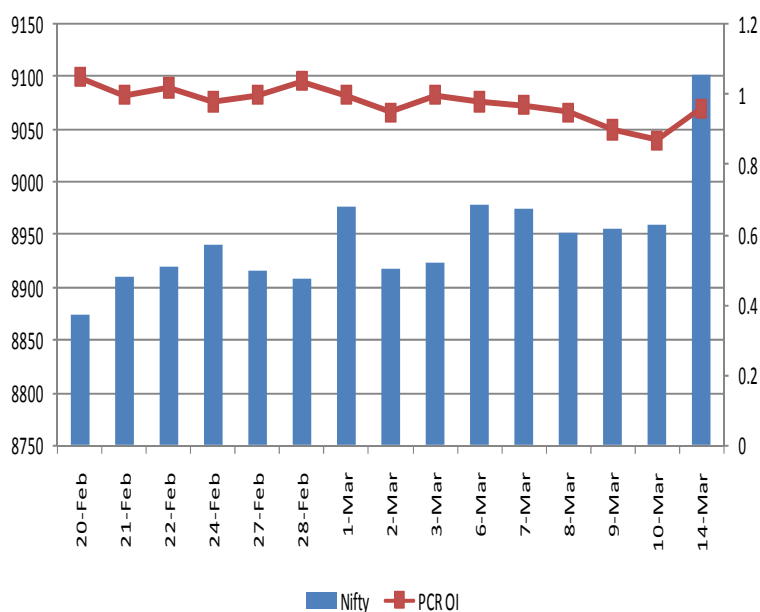
#### OI Concentration

PUT OPTION		CALL OPTION	
Strike Price	Open Interest	Strike Price	Open Interest
8800	5582250	9200	4964025
8900	4862925	9500	4737000
9000	4549275	9100	4701975
8700	3628125	9300	4041600
9100	3268275	9000	3640275

#### Highest Change in OI

PUT OPTION		CALL OPTION	
Strike Price	Change in OI	Strike Price	Change in OI
8800	421050	9250	84450
8300	103500	9350	33900
8200	96825	9600	3900
8700	76575	11000	1875
9100	65700	9800	1725

#### Nifty Future Price V/S PCR-OI



## Technical Trend

### Stock Analysis

Long Build-up	Long Unwinding	Short Build-up	Short Covering
ABIRLANUVO	ADANIPOWER	BHARATFORG	APOLLOTYRE
BHEL	TATACHEM	HCLTECH	CEATLTD
CENTURYTEX	TCS	HINDPETRO	HEXAWARE
KSCL		IGL	JUSTDIAL
ORIENTBANK		KPIT	SRTRANSFIN
PNB		TORNTPOWER	TATAMTRDVR

### STATISTICS

#### Highest Premium

SCRIPS	Premium %	Price change %
JPASSOCIAT	1.01	6.05
GMRINFRA	0.92	0.31
TORNTPHARM	0.70	0.99
CGPOWER	0.57	1.41
ALBK	0.57	1.51

#### Highest Discount

SCRIPS	Premium %	Price change %
NMDC	-2.70	1.15
HEROMOTOCO	-1.29	1.30
HINDZINC	-1.06	0.34
PFC	-1.00	1.01
UNIONBANK	-0.73	0.57

#### TOP 5 VOLUME GAINER FOR THE SESSION

SCRIPS	CP AS ON 14/03/2017	CP AS ON 15/03/2017	Change (%)	OI AS ON 14/03/2017	OI AS ON 15/03/2017	Change (%)
MCDOWELL-N	2251.2	2280.8	1.31	1917	7647	299%
MRF	53219.8	56529	6.22	3186	12177	282%
APOLLOTYRE	186.65	194.3	4.10	3461	10285	197%
IDEA	103.45	113.35	9.57	7625	22577	196%
IRB	231.75	245.25	5.83	2437	6275	157%

#### TOP 5 VOLUME LOSER FOR THE SESSION

SCRIPS	CP AS ON 14/03/2017	CP AS ON 15/03/2017	Change (%)	OI AS ON 14/03/2017	OI AS ON 15/03/2017	Change (%)
SUNPHARMA	710.8	707.7	-0.44	43108	8637	-80%
BHARATFIN	815.85	804.4	-1.40	13310	4137	-69%
ICICIBANK	287.6	286.4	-0.42	29792	10439	-65%
LT	1563.75	1554.9	-0.57	16958	5993	-65%
HINDUNILVR	917.95	904.1	-1.51	7547	2939	-61%

## Technical Trend

### TOP 10 OPEN INTEREST GAINER FOR THE SESSION

SCRIPS	CP AS ON 14/03/2017	CP AS ON 15/03/2017	Change (%)	OI AS ON 14/03/2017	OI AS ON 15/03/2017	Change (%)
ICIL	176.8	190.25	7.61	3437000	4679500	36.15
PAGEIND	14344.3	14645.9	2.10	27800	33800	21.58
JPASSOCIAT	14.15	15.05	6.36	141168000	165716000	17.39
TORNTPOWER	196.85	191.8	-2.57	5082000	5667000	11.51
HEROMOTOCO	3316	3357.2	1.24	1250800	1375200	9.95
IGL	1026.2	1023.4	-0.27	1732500	1904100	9.90
IOC	374.8	371.25	-0.95	15987000	17325000	8.37
AMARAJABAT	836.2	869.2	3.95	1941600	2096400	7.97
COALINDIA	295.8	294.15	-0.56	15386700	16597100	7.87
HINDZINC	289.15	289.3	0.05	11878400	12774400	7.54

### TOP 10 OPEN INTEREST LOSER FOR THE SESSION

SCRIPS	CP AS ON 14/03/2017	CP AS ON 15/03/2017	Change (%)	OI AS ON 14/03/2017	OI AS ON 15/03/2017	Change (%)
COLPAL	954.15	957.05	0.30	1257900	1145200	-8.96
LICHSGFIN	581.35	587.75	1.10	7714300	7243500	-6.10
JETAIRWAYS	447.6	455.35	1.73	5313000	5049000	-4.97
RECLTD	158.05	159.85	1.14	30912000	29412000	-4.85
JINDALSTEL	125	123.2	-1.44	39069000	37242000	-4.68
SIEMENS	1256.95	1258.25	0.10	941500	901500	-4.25
TATAPOWER	83.8	85.15	1.61	30609000	29394000	-3.97
AXISBANK	513.15	513.95	0.16	28424400	27379200	-3.68
TVSMOTOR	436.1	439.1	0.69	5738000	5538000	-3.49
RELIANCE	1293	1304.9	0.92	21002500	20286000	-3.41

## Technical Trend

### Pivot Report– Nifty 50

Symbol	PClose	Support3	Support2	Support1	Pivot	Resist1	Resist2	Resist3
ACC	1414.4	1395.7	1403.9	1409.1	<b>1417.3</b>	1422.5	1430.6	1435.9
ADANIPTS	310.3	301.8	304.9	307.6	<b>310.7</b>	313.4	316.5	319.2
AMBUJACEM	231.8	227.0	228.9	230.4	<b>232.3</b>	233.7	235.6	237.0
ASIANPAINT	1064.1	1043.9	1052.5	1058.3	<b>1066.9</b>	1072.7	1081.3	1087.1
AUOPHARMA	678.0	654.1	659.7	668.8	<b>674.4</b>	683.5	689.1	698.2
AXISBANK	511.7	501.8	505.4	508.6	<b>512.2</b>	515.3	518.9	522.1
BAJAJ-AUTO	2873.1	2822.2	2839.1	2856.1	<b>2873.1</b>	2890.1	2907.0	2924.0
BANKBARODA	166.5	155.1	157.8	162.2	<b>164.9</b>	169.3	172.0	176.4
BHARTIARTL	363.2	347.6	351.9	357.6	<b>361.9</b>	367.5	371.8	377.5
BHEL	166.9	156.5	158.9	162.9	<b>165.4</b>	169.4	171.8	175.8
BOSCHLTD	22784.8	21799.2	22049.9	22417.3	<b>22668.0</b>	23035.5	23286.2	23653.6
BPCL	636.5	620.6	626.7	631.6	<b>637.7</b>	642.6	648.7	653.6
CIPLA	600.2	589.9	594.2	597.2	<b>601.5</b>	604.5	608.8	611.8
COALINDIA	292.7	285.9	288.9	290.8	<b>293.9</b>	295.8	298.8	300.7
DRREDDY	2739.6	2691.7	2707.9	2723.7	<b>2739.9</b>	2755.7	2771.9	2787.7
EICHERMOT	24133.4	23505.8	23704.5	23918.9	<b>24117.6</b>	24332.0	24530.7	24745.1
GAIL	375.3	367.4	370.1	372.7	<b>375.4</b>	378.0	380.7	383.3
GRASIM	1048.6	991.1	1009.6	1029.1	<b>1047.5</b>	1067.0	1085.5	1105.0
HCLTECH	842.9	816.2	826.7	834.8	<b>845.4</b>	853.5	864.0	872.1
HDFC	1426.1	1398.5	1407.6	1416.8	<b>1425.9</b>	1435.2	1444.3	1453.5
HDFCBANK	1416.6	1402.0	1406.3	1411.4	<b>1415.7</b>	1420.9	1425.2	1430.3
HEROMOTOCO	3345.4	3222.7	3251.6	3298.5	<b>3327.3</b>	3374.2	3403.0	3449.9
HINDALCO	190.9	186.8	188.4	189.6	<b>191.3</b>	192.5	194.1	195.3
HINDUNILVR	900.5	875.7	887.4	893.9	<b>905.6</b>	912.1	923.8	930.3
ICICIBANK	285.2	280.9	282.5	283.8	<b>285.4</b>	286.7	288.3	289.6
IDEA	113.1	92.0	97.5	105.3	<b>110.9</b>	118.7	124.2	132.0
INDUSINDBK	1348.4	1323.5	1334.5	1341.4	<b>1352.5</b>	1359.4	1370.4	1377.3
INFRATEL	308.9	302.3	305.2	307.0	<b>309.9</b>	311.8	314.7	316.5
INFY	1012.0	973.9	990.7	1001.3	<b>1018.1</b>	1028.7	1045.5	1056.1
ITC	268.2	259.9	262.5	265.4	<b>268.0</b>	270.9	273.5	276.4
KOTAKBANK	844.2	823.4	829.3	836.7	<b>842.6</b>	850.0	855.9	863.3
LT	1548.9	1519.6	1529.9	1539.4	<b>1549.7</b>	1559.2	1569.5	1579.0
LUPIN	1449.9	1431.5	1437.5	1443.7	<b>1449.7</b>	1455.9	1461.9	1468.1
M&M	1323.6	1292.3	1304.6	1314.1	<b>1326.4</b>	1335.8	1348.1	1357.6
MARUTI	6137.4	6020.7	6056.6	6097.0	<b>6132.9</b>	6173.3	6209.2	6249.6
NTPC	158.7	156.3	157.3	158.0	<b>159.0</b>	159.7	160.7	161.4
ONGC	190.7	187.4	188.9	189.8	<b>191.4</b>	192.3	193.8	194.7
POWERGRID	193.0	190.7	191.6	192.3	<b>193.2</b>	193.8	194.7	195.4
RELIANCE	1305.0	1265.6	1278.0	1291.5	<b>1303.9</b>	1317.4	1329.8	1343.3
SBIN	277.4	265.3	269.0	273.2	<b>276.8</b>	281.0	284.7	288.9
SUNPHARMA	705.9	687.7	696.0	700.9	<b>709.2</b>	714.1	722.4	727.3
TATAMOTORS	473.5	464.7	467.7	470.6	<b>473.6</b>	476.5	479.5	482.4
TATAMTRDVR	286.5	276.7	279.3	282.9	<b>285.5</b>	289.1	291.7	295.3
TATAPOWER	85.1	81.5	82.5	83.8	<b>84.8</b>	86.1	87.1	88.4
TATASTEEL	479.1	463.4	466.9	473.0	<b>476.5</b>	482.6	486.1	492.2
TCS	2498.3	2392.4	2443.1	2470.7	<b>2521.4</b>	2549.0	2599.7	2627.3
TECHM	479.7	459.4	465.5	472.6	<b>478.7</b>	485.7	491.8	498.9
ULTRACEMCO	4017.5	3906.4	3936.2	3976.8	<b>4006.6</b>	4047.2	4077.0	4117.6
WIPRO	494.8	476.0	484.2	489.5	<b>497.7</b>	503.0	511.2	516.5
YESBANK	1529.1	1504.2	1512.0	1520.5	<b>1528.3</b>	1536.8	1544.6	1553.1
ZEEL	525.6	508.9	513.2	519.4	<b>523.8</b>	530.0	534.3	540.5



BP WEALTH

Technical Research Desk

Tel: +91 22 61596173

Institutional Sales Desk

Tel: +91 22 61596403/04/05

## Disclaimer Appendix

### Analyst s holding in the Stock : Nil

#### Analyst s Certification:

We analysts and the authors of this report, hereby certify that all of the views expressed in this research report accurately reflect our personal views about any and all of the subject issuer s or securities. We also certify that no part of our compensation was, is, or will be directly or indirectly related to the specific recommendation s or view s in this report. Analysts aren't registered as research analysts by FINRA and might not be an associated person of the BP Equities Pvt. Ltd. Institutional Equities.

#### General Disclaimer

This report has been prepared by the research department of BP EQUITIES Pvt. Ltd, is for information purposes only. This report is not construed as an offer to sell or the solicitation of an offer to buy or sell any security in any jurisdiction where such an offer or solicitation would be illegal.

BP EQUITIES Pvt. Ltd have exercised due diligence in checking the correctness and authenticity of the information contained herein, so far as it relates to current and historical information, but do not guarantee its accuracy or completeness. The opinions expressed are our current opinions as of the date appearing in the material and may be subject to change from time to time. Prospective investors are cautioned that any forward looking statement are not predictions and are subject to change without prior notice.

Recipients of this material should rely on their own investigations and take their own professional advice. BP EQUITIES Pvt. Ltd or any of its affiliates or employees shall not be in any way responsible for any loss or damage that may arise to any person from any inadvertent error in the information contained in this report. BP EQUITIES Pvt. Ltd. or any of its affiliates or employees do not provide, at any time, any express or implied warranty of any kind, regarding any matter pertaining to this report, including without limitation the implied warranties of merchantability, fitness for a particular purpose, and non-infringement. The recipients of this report should rely on their own investigations.

BP EQUITIES Pvt. Ltd and/or its affiliates and/or employees may have interests/ positions, financial or otherwise in the securities mentioned in this report. Opinions expressed are our current opinions as of the date appearing on this material only. While we endeavor to update on a reasonable basis the information discussed in this material, there may be regulatory, compliance, or other reasons that prevent us from doing so.

This report is not directed to or intended for display, downloading, printing, reproducing or for distribution to or use by any person in any locality, state and country or other jurisdiction where such distribution, publication or use would be contrary to the law or regulation or would subject to BP EQUITIES Pvt. Ltd or any of its affiliates to any registration or licensing requirement within such jurisdiction.

#### Corporate Office:

4th floor,  
Rustom Bldg,  
29, Veer Nariman Road, Fort,  
Mumbai-400001  
Phone- +91 22 6159 6464  
Fax-+91 22 6159 6160  
Website- [www.bpwealth.com](http://www.bpwealth.com)

#### Registered Office:

24/26, 1st Floor, Cama Building,  
Dalal street, Fort,  
Mumbai-400001  
BP Equities Pvt. Ltd.  
CIN No: U67120MH1997PTC107392