

NIFTY FUT : CONTINUE UPMOVE INITIALLY TOWARDS 9240



Source: Falcon, BP Equities Research

Nifty futures closed 0.73% higher at 9176. Index surpassed the previous peak to form all time high and close above 9100 (spot level) for the first time. Price has earlier surpassed the down sloping trend line and made a new high which is a bullish signal for short term trend. Going ahead index a sustenance above 9120 will continue the up move initially towards 9240 while support comes at 9090-9040.

Intraday Nifty Future

Resistance—9240/9280/9320

Support—9140/9090/9040

BANK NIFTY FUT : RESISTANCE AT 21500



Source: Falcon, BP Equities Research

Bank Nifty futures closed 0.42% higher at 21311. Index failed to capitalize on the gap up opening and has closed forming a small bodied candlestick. Price has earlier given breakout form flag a bullish continuation pattern after which it is expected to resume its up move. Going ahead index has immediate resistance at 21500, a sustenance above this level will continue its up move towards 22050 in short term while support comes at 20900-20750.

Intraday Bank Nifty Future

Resistance—21500/21700/22050

Support—20900/20750/20550

Technical Trend

INTRADAY TRADER'S PICKS

Sr.No.	STOCK	CLOSE	S1	S2	S3	R1	R2	R3	RECOMMENDATION
1	BAJAJ-AUTO	2936	2910	2880	2850	2970	3010	3050	BUY ABOVE 2945
2	GRAPHITE	114.95	113	110	107	119	122	125	BUY ABOVE 116
3	PNB	148.20	146	143	140	152	155	158	BUY ABOVE 149
4	SUPREMEIND	1046	1035	1020	1005	1071	1086	1101	BUY ABOVE 1053
5	UFLEX	287.5	285	281	277	295	299	303	BUY ABOVE 290

DERIVATIVES

INDICES SNAPSHOT

SCRIPS	CP AS ON 15/03/2017	CP AS ON 16/03/2017	Change (%)	OI AS ON 15/03/2017	OI AS ON 16/03/2017	Change (%)
BANKNIFTY	21222.6	21310.8	0.42	2556600	2506640	-1.95
NIFTY	9109.3	9176.15	0.73	31565850	32592675	3.25
NIFTYIT	10711	10849	1.29	52500	53000	0.95

Derivative Highlights

- ⇒ Nifty Future closed with a premium of 22 points v/s a premium of 24 points in the previous session.
- ⇒ Nifty Future Open Interest increased by 3.25%. BankNifty Future Open Interest decreased by 1.95%
- ⇒ Nifty PCR - OI increased from 1.03 to 1.09, Nifty PCR - Vol increased from 0.89 to 1.14
- ⇒ FII Bought 1360.10 crore while DII Sold Rs. 88.17 crore in the Cash Segment. FII Bought Rs. 857.97 crore in Index Futures and Bought Rs. 1483.76 crore in index options, while in Stock Future they Sold Rs. 166.25 crore and Sold Rs 178.32 crore in stock options.
- ⇒ Among Index Option space, Highest Open Interest concentration was seen in 8800 & 8900 Strike price among the PE options. Where as among CE Options Highest Open Interest Concentration was seen in 9200 & 9500 Strike price.
- ⇒ Highest Open Interest Build Up among the PE options was seen in 9100 & 9200 Strike price. Among CE options highest build up was seen in 9200 & 9350 Strike price.

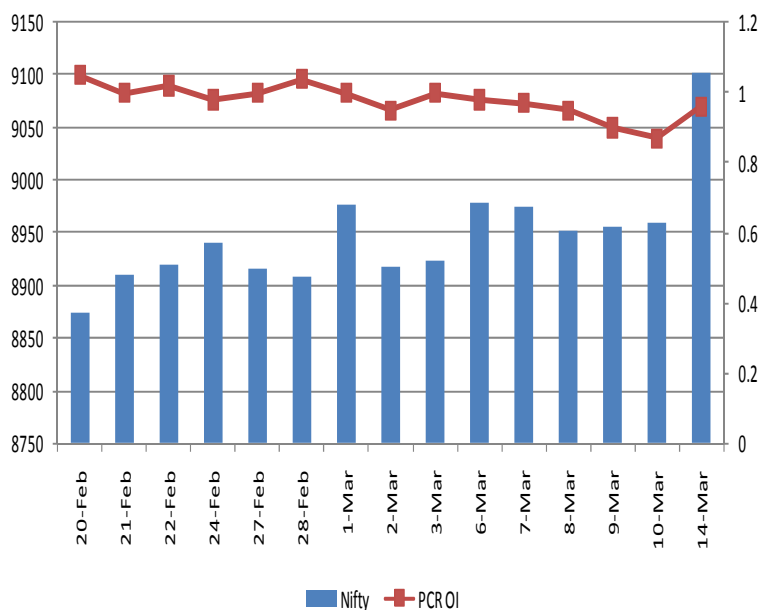
OI Concentration

PUT OPTION		CALL OPTION	
Strike Price	Open Interest	Strike Price	Open Interest
8800	5906325	9200	5410950
8900	5158500	9500	4213125
9000	4827225	9300	4145850
9100	4094550	9100	3447825
8700	3589575	9000	2834400

Highest Change in OI

PUT OPTION		CALL OPTION	
Strike Price	Change in OI	Strike Price	Change in OI
9100	826275	9200	446925
9200	487575	9350	146925
8800	324075	9300	104250
8900	295575	9250	65400
9000	277950	9400	21150

Nifty Future Price V/S PCR-OI



Technical Trend

Stock Analysis

Long Build-up	Long Unwinding	Short Build-up	Short Covering
ADANI PORTS	CONCOR	BEL	AUROPHARMA
BEML	ICICIBANK	COALINDIA	BPCL
DABUR		HEXAWARE	COLPAL
JETAIRWAYS		NIITTECH	GODREJCP
PCJEWELLER		STAR	JSWSTEEL
RELCAPITAL			TATACHEM

STATISTICS

Highest Premium

SCRIPS	Premium %	Price change %
GMRINFRA	0.87	5.20
SOUTHBANK	0.73	1.23
JPASSOCIAT	0.67	-0.34
UPL	0.63	-0.30
IDFCBANK	0.57	0.49

Highest Discount

SCRIPS	Premium %	Price change %
HINDZINC	-4.13	5.27
ENGINEERSIN	-1.45	3.19
PFC	-0.58	1.48
UNIONBANK	-0.58	3.35
MARICO	-0.39	2.29

TOP 5 VOLUME GAINER FOR THE SESSION

SCRIPS	CP AS ON 15/03/2017	CP AS ON 16/03/2017	Change (%)	Vol AS ON 15/03/2017	Vol AS ON 16/03/2017	Change (%)
RELCAPITAL	558.7	605.9	8.45	6429	29793	363%
SAIL	60.35	63.95	5.97	1489	5225	251%
WOCKPHARMA	737.85	749.45	1.57	1479	4756	222%
SINTEX	97.65	101.35	3.79	1774	5522	211%
JSWSTEEL	183.9	193.1	5.00	2836	7882	178%

TOP 5 VOLUME LOSER FOR THE SESSION

SCRIPS	CP AS ON 15/03/2017	CP AS ON 16/03/2017	Change (%)	Vol AS ON 15/03/2017	Vol AS ON 16/03/2017	Change (%)
MRF	56529	56549.25	0.04	12177	2230	-82%
ABIRLANUVO	1525.8	1533.2	0.48	4173	1464	-65%
APOLLOTYRE	194.3	196.35	1.06	10285	3640	-65%
CEATLTD	1259.4	1256.95	-0.19	11145	4284	-62%
MCDOWELL-N	2280.8	2226.5	-2.38	7647	3470	-55%

Technical Trend

TOP 10 OPEN INTEREST GAINER FOR THE SESSION

SCRIPS	CP AS ON 15/03/2017	CP AS ON 16/03/2017	Change (%)	OI AS ON 15/03/2017	OI AS ON 16/03/2017	Change (%)
RELCAPITAL	558.7	605.9	8.45	10537500	12607500	19.64
GODREJIND	500.45	515.55	3.02	1398000	1669500	19.42
STAR	1153.5	1148.1	-0.47	1589500	1795500	12.96
PCJEWELLER	387.65	418.8	8.04	910500	1020000	12.03
JUSTDIAL	588.45	613.5	4.26	2800800	3130800	11.78
SUNTV	747.5	761.8	1.91	7020000	7830000	11.54
HINDZINC	289.3	295.1	2.00	12774400	14121600	10.55
COALINDIA	294.15	293.3	-0.29	16597100	18246100	9.94
BAJAJ-AUTO	2883.6	2948.45	2.25	1198250	1315500	9.79
SINTEX	97.65	101.35	3.79	46626000	50758500	8.86

TOP 10 OPEN INTEREST LOSER FOR THE SESSION

SCRIPS	CP AS ON 15/03/2017	CP AS ON 16/03/2017	Change (%)	OI AS ON 15/03/2017	OI AS ON 16/03/2017	Change (%)
TORNTPOWER	191.8	201.2	4.90	5667000	5034000	-11.17
SAIL	60.35	63.95	5.97	54576000	49536000	-9.23
VEDL	256.6	265	3.27	43141000	39956000	-7.38
HINDALCO	191.75	199.2	3.89	45535000	42556500	-6.54
APOLLOTYRE	194.3	196.35	1.06	15231000	14280000	-6.24
COLPAL	957.05	978.7	2.26	1145200	1082900	-5.44
MRF	56529	56549.25	0.04	55560	52770	-5.02
RCOM	36.75	38.2	3.95	111624000	106560000	-4.54
ARVIND	403.8	408.4	1.14	6698000	6396000	-4.51
PAGEIND	14645.9	14696.35	0.34	33800	32350	-4.29

Technical Trend

Pivot Report– Nifty 50

Symbol	PClose	Support3	Support2	Support1	Pivot	Resist1	Resist2	Resist3
ACC	1422.0	1405.0	1412.0	1417.0	1424.0	1429.0	1436.0	1441.0
ADANIPTS	325.7	299.8	305.7	315.7	321.5	331.5	337.4	347.4
AMBUJACEM	235.4	229.9	231.3	233.4	234.8	236.8	238.2	240.3
ASIANPAINT	1087.6	1052.8	1060.5	1074.0	1081.8	1095.3	1103.0	1116.5
AUROPHARMA	687.6	665.4	671.9	679.8	686.3	694.2	700.7	708.6
AXISBANK	513.7	505.5	508.4	511.0	513.9	516.5	519.4	522.0
BAJAJ-AUTO	2936.4	2801.9	2832.2	2884.3	2914.6	2966.7	2997.0	3049.1
BANKBARODA	168.6	163.5	165.0	166.8	168.2	170.0	171.5	173.3
BHARTIARTL	360.7	351.5	355.3	358.0	361.8	364.5	368.3	371.0
BHEL	168.9	165.7	166.6	167.7	168.6	169.7	170.6	171.7
BOSCHLTD	22927.0	22584.5	22687.3	22807.1	22909.9	23029.7	23132.5	23252.3
BPCL	647.8	627.7	632.4	640.1	644.7	652.4	657.1	664.8
CIPLA	601.4	589.8	593.9	597.7	601.8	605.5	609.6	613.4
COALINDIA	292.0	286.0	288.6	290.3	292.9	294.6	297.2	298.9
DRREDDY	2751.7	2722.9	2734.0	2742.8	2753.9	2762.8	2773.9	2782.7
EICHERMOT	24514.8	23897.0	24047.6	24281.2	24431.8	24665.4	24816.0	25049.6
GAIL	378.8	374.3	375.4	377.1	378.3	380.0	381.1	382.8
GRASIM	1050.6	1027.5	1035.9	1043.2	1051.6	1059.0	1067.4	1074.7
HCLTECH	855.4	834.4	842.0	848.7	856.3	863.0	870.6	877.3
HDFC	1450.3	1412.4	1421.8	1436.0	1445.4	1459.6	1469.0	1483.2
HDFCBANK	1417.4	1403.9	1408.8	1413.1	1418.0	1422.3	1427.2	1431.5
HEROMOTOCO	3348.0	3280.4	3310.7	3329.4	3359.7	3378.3	3408.6	3427.3
HINDALCO	198.8	187.8	190.3	194.5	197.0	201.2	203.7	207.9
HINDUNILVR	906.2	879.9	887.6	896.9	904.7	914.0	921.7	931.0
ICICIBANK	284.5	277.2	279.8	282.2	284.8	287.2	289.8	292.2
IDEA	113.0	107.2	109.3	111.1	113.2	115.0	117.1	118.9
INDUSINDBK	1376.6	1329.1	1341.2	1358.9	1370.9	1388.6	1400.7	1418.4
INFRATEL	310.5	306.8	308.0	309.3	310.5	311.8	313.0	314.3
INFY	1028.9	999.1	1006.2	1017.5	1024.6	1035.9	1043.0	1054.3
ITC	268.5	263.1	265.3	266.9	269.1	270.6	272.8	274.4
KOTAKBANK	851.4	841.1	845.2	848.3	852.3	855.4	859.5	862.6
LT	1571.1	1544.0	1551.0	1561.0	1568.0	1578.0	1585.0	1595.0
LUPIN	1455.4	1441.2	1445.6	1450.5	1454.9	1459.8	1464.2	1469.1
M&M	1320.9	1300.7	1309.6	1315.2	1324.1	1329.8	1338.7	1344.3
MARUTI	6155.5	6074.7	6103.2	6129.3	6157.8	6183.9	6212.4	6238.5
NTPC	161.3	157.3	158.2	159.7	160.6	162.2	163.1	164.6
ONGC	191.8	188.5	189.9	190.8	192.2	193.2	194.6	195.5
POWERGRID	195.1	190.7	191.7	193.4	194.4	196.1	197.1	198.8
RELIANCE	1297.7	1273.9	1283.8	1290.7	1300.6	1307.5	1317.4	1324.3
SBIN	279.3	272.7	274.4	276.8	278.5	281.0	282.7	285.1
SUNPHARMA	710.8	693.0	700.1	705.4	712.5	717.8	724.9	730.2
TATAMOTORS	481.0	471.6	473.9	477.4	479.7	483.3	485.6	489.1
TATAMTRDVR	292.9	284.4	286.3	289.6	291.5	294.8	296.7	300.0
TATAPOWER	86.2	81.9	83.0	84.6	85.6	87.2	88.3	89.9
TATASTEEL	499.7	468.4	475.2	487.4	494.2	506.5	513.3	525.5
TCS	2520.9	2487.9	2497.0	2508.9	2518.0	2529.9	2539.0	2550.9
TECHM	481.1	473.1	475.8	478.5	481.2	483.8	486.5	489.2
ULTRACEMCO	4056.6	3952.4	3988.2	4022.4	4058.2	4092.3	4128.1	4162.3
WIPRO	500.6	488.2	491.6	496.1	499.5	504.0	507.4	511.9
YESBANK	1528.0	1488.9	1503.7	1515.8	1530.6	1542.8	1557.6	1569.7
ZEEL	525.5	516.0	518.9	522.2	525.1	528.3	531.2	534.5



BP WEALTH

Technical Research Desk

Tel: +91 22 61596173

Institutional Sales Desk

Tel: +91 22 61596403/04/05

Disclaimer Appendix

Analyst s holding in the Stock : Nil

Analyst s Certification:

We analysts and the authors of this report, hereby certify that all of the views expressed in this research report accurately reflect our personal views about any and all of the subject issuer s or securities. We also certify that no part of our compensation was, is, or will be directly or indirectly related to the specific recommendation s or view s in this report. Analysts aren't registered as research analysts by FINRA and might not be an associated person of the BP Equities Pvt. Ltd. Institutional Equities.

General Disclaimer

This report has been prepared by the research department of BP EQUITIES Pvt. Ltd, is for information purposes only. This report is not construed as an offer to sell or the solicitation of an offer to buy or sell any security in any jurisdiction where such an offer or solicitation would be illegal.

BP EQUITIES Pvt. Ltd have exercised due diligence in checking the correctness and authenticity of the information contained herein, so far as it relates to current and historical information, but do not guarantee its accuracy or completeness. The opinions expressed are our current opinions as of the date appearing in the material and may be subject to change from time to time. Prospective investors are cautioned that any forward looking statement are not predictions and are subject to change without prior notice.

Recipients of this material should rely on their own investigations and take their own professional advice. BP EQUITIES Pvt. Ltd or any of its affiliates or employees shall not be in any way responsible for any loss or damage that may arise to any person from any inadvertent error in the information contained in this report. BP EQUITIES Pvt. Ltd. or any of its affiliates or employees do not provide, at any time, any express or implied warranty of any kind, regarding any matter pertaining to this report, including without limitation the implied warranties of merchantability, fitness for a particular purpose, and non-infringement. The recipients of this report should rely on their own investigations.

BP EQUITIES Pvt. Ltd and/or its affiliates and/or employees may have interests/ positions, financial or otherwise in the securities mentioned in this report. Opinions expressed are our current opinions as of the date appearing on this material only. While we endeavor to update on a reasonable basis the information discussed in this material, there may be regulatory, compliance, or other reasons that prevent us from doing so.

This report is not directed to or intended for display, downloading, printing, reproducing or for distribution to or use by any person in any locality, state and country or other jurisdiction where such distribution, publication or use would be contrary to the law or regulation or would subject to BP EQUITIES Pvt. Ltd or any of its affiliates to any registration or licensing requirement within such jurisdiction.

Corporate Office:

4th floor,
Rustom Bldg,
29, Veer Nariman Road, Fort,
Mumbai-400001
Phone- +91 22 6159 6464
Fax-+91 22 6159 6160
Website- www.bpwealth.com

Registered Office:

24/26, 1st Floor, Cama Building,
Dalal street, Fort,
Mumbai-400001
BP Equities Pvt. Ltd.
CIN No: U67120MH1997PTC107392