

NIFTY FUT : CONTINUE UPMOVE TOWARDS 9550-9600



Nifty futures closed 0.73% higher at 9522. Index gave a breakout from up sloping channel after consolidating around it which is a bullish signal for short term trend. RSI has earlier formed positive reversal and is now consolidating around down sloping trend line, a sustenance above the trend line will make the index resume its previous up move. Going ahead till index sustains above 9450 it is expected to continue its up move towards 9600 while support past 9450 comes at 9370.

Intraday Nifty Future Resistance—9550/9600/9640 Support—9450/9420/9370

BANK NIFTY FUT : SUSTENANCE ABOVE 22850 WILL TAKE IT TO 23250



Bank Nifty futures closed 0.50% higher at 22941. Index gave confirmation to Bullish harami candlestick pattern which suggests index to resume its previous upmove. Earlier index has given breakout from a consolidation range, a sustenance above the upper end of the range will make the index resume its previous up move. Going ahead till index sustains above 22850 it is expected to continue its up move towards 23100-23250 while support past 22850 comes at 22600.

Intraday Bank Nifty Future Resistance—23000/23100/23250 Support—22850/22750/22600

Technical Trend

INTRADAY TRADER'S PICKS

Sr.No.	STOCK	CLOSE	S1	S2	S3	R1	R2	R3	RECOMMENDATION
1	EIHOTEL	139.70	138	135	132	144	147	150	BUY ABOVE 141
2	ORIENTBANK	161.90	159	156	153	167	170	173	BUY ABOVE 163
3	PCJEWELLER	459.80	455	449	443	469	475	481	BUY ABOVE 462
4	RMCL	34.75	33	32	31.5	36	37	37.5	BUY ABOVE 35
5	SRF	1841	1830	1810	1790	1870	1890	1910	BUY ABOVE 1850

Technical Trend

DERIVATIVES

INDICES SNAPSHOT

SCRIPS	CP AS ON 15/05/2017	CP AS ON 16/05/2017	Change (%)	OI AS ON 15/05/2017	OI AS ON 16/05/2017	Change (%)
BANKNIFTY	22827.35	22941.05	0.50	3741800	3794520	1.41
NIFTY	9453.3	9522.15	0.73	23032725	23911275	3.81
NIFTYIT	10339	10464	1.21	36950	36900	-0.14

Derivative Highlights

- ⇒ Nifty Future closed with a premium of 10 points v/s a premium of 8 points in the previous session.
- ⇒ Nifty Future Open Interest increased by 3.81%. BankNifty Future Open Interest increased by 1.41%.
- ⇒ Nifty PCR - OI increased from 1.23 to 1.34, Nifty PCR - Vol decreased from 1.38 to 1.18.
- ⇒ FII Bought 858.29 crore while DII Sold Rs. 401.89 crore in the Cash Segment. FII Sold Rs. 22.30 crore in Index Futures and Bought Rs. 437.01 crore in index options, while in Future they Bought Rs. 144.20 crore and Bought Rs 6.81 crore in stock options.
- ⇒ Among Index Option space, Highest Open Interest concentration was seen in 9300 & 9400 Strike price among the PE options. Where as among CE Options Highest Open Interest Concentration was seen in 9500 & 9600 Strike price.
- ⇒ Highest Open Interest Build Up among the PE options was seen in 9500 & 9400 Strike price. Among CE options highest build up was seen in 9600 & 9550 Strike price.

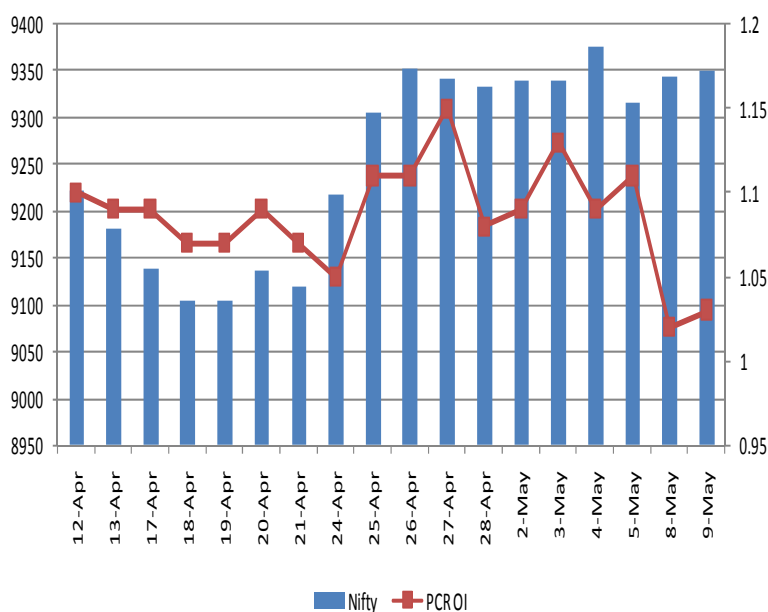
OI Concentration

PUT OPTION		CALL OPTION	
Strike Price	Open Interest	Strike Price	Open Interest
9300	7400550	9500	5744025
9400	6265200	9600	4115025
9200	4770675	9400	3391050
9000	4680675	9700	1864125
9100	4099875	9300	1842900

Highest Change in OI

PUT OPTION		CALL OPTION	
Strike Price	Change in OI	Strike Price	Change in OI
9500	2091375	9600	642975
9400	1632750	9550	438375
9450	840375	9650	215475
9600	389550	9750	145875
9200	133650	9900	75000

Nifty Future Price V/S PCR-OI



Technical Trend

Stock Analysis

Long Build-up	Long Unwinding	Short Build-up	Short Covering
ACC	GAIL	ADANI PORTS	BHARATFORG
BANKBARODA	JSW ENERGY	CESC	DISHTV
HCLTECH	SUN PHARMA	DIVISLAB	HINDPETRO
ICIL	TATA GLOBAL	HDIL	IOC
MCX	UJJIVAN	JPASSOCIAT	KTKBANK
VGUARD	ZEEL	NHPC	TORNTPHARM

STATISTICS

Highest Premium

SCRIPS	Premium %	Price change %
BALKRISIND	1.45	0.29
JPASSOCIAT	1.20	-1.97
RCOM	0.62	0.31
IDBI	0.59	2.13
GMRINFRA	0.57	-0.85

Highest Discount

SCRIPS	Premium %	Price change %
CEATLTD	-5.22	4.45
CANBK	-1.45	2.43
INFIBEAM	-0.99	0.05
HCLTECH	-0.61	0.12
ORIENTBANK	-0.59	1.19

TOP 5 VOLUME GAINER FOR THE SESSION

SCRIPS	CP AS ON 15/05/2017	CP AS ON 16/05/2017	Change (%)	Vol AS ON 15/05/2017	Vol AS ON 16/05/2017	Change (%)
PNB	166.5	174.75	4.95	11091	55313	399%
HDIL	99.95	98	-1.95	2837	9190	224%
ENGINEERSIN	169.55	173.9	2.57	1795	5278	194%
BANKINDIA	181.1	187.3	3.42	2733	7365	169%
TCS	2363.95	2425.75	2.61	3582	9211	157%

TOP 5 VOLUME LOSER FOR THE SESSION

SCRIPS	CP AS ON 15/05/2017	CP AS ON 16/05/2017	Change (%)	Vol AS ON 15/05/2017	Vol AS ON 16/05/2017	Change (%)
SOUTHBANK	24.85	25.4	2.21	6597	1607	-76%
PEL	2881.2	2813.25	-2.36	9766	2790	-71%
TITAN	484.05	488.95	1.01	5879	1794	-69%
SUZLON	19.75	19.8	0.25	6988	2455	-65%
MFSL	678.9	673.8	-0.75	3627	1330	-63%

Technical Trend

TOP 10 OPEN INTEREST GAINER FOR THE SESSION

SCRIPS	CP AS ON 15/05/2017	CP AS ON 16/05/2017	Change (%)	OI AS ON 15/05/2017	OI AS ON 16/05/2017	Change (%)
HDIL	99.95	98	-1.95	26288000	37240000	41.66
VGUARD	210.85	218.05	3.41	2079000	2751000	32.32
CHOLAFIN	1055.35	1029.7	-2.43	239500	273500	14.20
PNB	166.5	174.75	4.95	51226000	57603000	12.45
NESTLEIND	6600.75	6470.7	-1.97	79900	89700	12.27
RAYMOND	774.75	787.6	1.66	988000	1096800	11.01
KSCL	548.7	540.4	-1.51	2910000	3162000	8.66
MCX	1079.05	1082.25	0.30	1253000	1356000	8.22
HINDZINC	257.8	252.1	-2.21	19440000	20947200	7.75
JPASSOCIAT	12.8	12.6	-1.56	185980000	199716000	7.39

TOP 10 OPEN INTEREST LOSER FOR THE SESSION

SCRIPS	CP AS ON 15/05/2017	CP AS ON 16/05/2017	Change (%)	OI AS ON 15/05/2017	OI AS ON 16/05/2017	Change (%)
GRASIM	1178.25	1169.4	-0.75	6145500	5729250	-6.77
TORNTPHARM	1305.8	1326.65	1.60	336800	315600	-6.29
AMARAJABAT	932.9	926.4	-0.70	1848600	1736400	-6.07
CEATLTD	1592.3	1621.6	1.84	2183300	2064300	-5.45
KTKBANK	164.4	172.55	4.96	28501700	26967700	-5.38
BRITANNIA	3753.9	3754.25	0.01	342800	325000	-5.19
CANBK	362.45	367.75	1.46	19867128	18840156	-5.17
BOSCHLTD	24275.95	24670.3	1.62	107250	101850	-5.03
IDEA	86	88	2.33	90335000	85813000	-5.01
CANFINHOME	2791.95	2766.6	-0.91	412000	391750	-4.92

Technical Trend

Pivot Report– Nifty 50

Symbol	PClose	Support3	Support2	Support1	Pivot	Resist1	Resist2	Resist3
ACC	1681.9	1636.6	1656.9	1669.4	1689.7	1702.2	1722.5	1735.0
ADANIPTS	356.2	342.6	346.7	351.5	355.6	360.4	364.5	369.3
AMBUJACEM	258.2	246.8	251.2	254.7	259.1	262.6	267.0	270.5
ASIANPAINT	1148.1	1123.8	1129.4	1138.7	1144.3	1153.6	1159.2	1168.5
AUOPHARMA	614.0	593.0	602.3	608.1	617.4	623.3	632.6	638.4
AXISBANK	500.1	486.1	492.2	496.2	502.3	506.3	512.4	516.4
BAJAJ-AUTO	2999.7	2944.5	2964.8	2982.3	3002.6	3020.0	3040.3	3057.8
BANKBARODA	188.8	183.6	185.1	186.9	188.4	190.2	191.7	193.5
BHARTIARTL	364.2	351.8	356.6	360.4	365.2	368.9	373.7	377.5
BOSCHLTD	24195.0	22930.0	23225.0	23710.0	24005.0	24490.0	24785.0	25270.0
BPCL	727.9	708.9	716.0	721.9	729.0	734.9	742.0	747.9
CIPLA	569.0	551.1	556.0	562.5	567.5	574.0	578.9	585.4
COALINDIA	277.8	275.9	276.6	277.2	277.8	278.4	279.1	279.7
DRREDDY	2675.8	2505.2	2548.6	2612.2	2655.6	2719.2	2762.6	2826.2
EICHERMOT	28930.6	28065.4	28448.2	28689.4	29072.2	29313.4	29696.2	29937.4
GAIL	414.0	405.7	407.8	410.9	413.1	416.2	418.3	421.4
GRASIM	1172.8	1129.5	1140.3	1156.5	1167.3	1183.5	1194.3	1210.5
HCLTECH	848.6	840.7	842.9	845.7	847.9	850.7	852.9	855.7
HDFC	1559.5	1533.0	1543.6	1551.5	1562.1	1570.0	1580.6	1588.5
HDFCBANK	1553.4	1529.8	1536.0	1544.7	1551.0	1559.7	1565.9	1574.6
HEROMOTOCO	3515.5	3440.6	3472.6	3494.0	3526.0	3547.4	3579.4	3600.8
HINDALCO	198.5	185.6	188.8	193.6	196.8	201.6	204.8	209.6
HINDUNILVR	983.3	961.3	967.9	975.6	982.2	989.9	996.5	1004.2
IBULHSGFIN	1062.8	1034.1	1044.3	1053.6	1063.8	1073.0	1083.2	1092.5
ICICIBANK	301.8	293.5	295.9	298.8	301.2	304.1	306.5	309.4
INDUSINDBK	1416.2	1386.3	1394.9	1405.5	1414.1	1424.7	1433.3	1443.9
INFRATEL	371.1	360.7	364.7	367.9	371.8	375.0	379.0	382.2
INFY	951.6	931.5	940.3	945.9	954.7	960.3	969.1	974.7
IOC	442.1	426.4	430.1	436.1	439.8	445.8	449.5	455.5
ITC	278.0	272.6	274.1	276.0	277.5	279.4	280.9	282.8
KOTAKBANK	973.3	930.9	942.7	958.0	969.7	985.0	996.8	1012.1
LT	1742.4	1720.4	1728.4	1735.4	1743.5	1750.5	1758.5	1765.5
LUPIN	1284.5	1219.1	1235.5	1260.0	1276.5	1301.0	1317.4	1341.9
M&M	1375.7	1351.6	1360.8	1368.2	1377.4	1384.9	1394.1	1401.5
MARUTI	6823.9	6652.9	6693.2	6758.5	6798.8	6864.2	6904.5	6969.8
NTPC	159.8	156.2	157.0	158.4	159.2	160.6	161.4	162.8
ONGC	186.8	183.7	184.9	185.8	187.1	188.0	189.2	190.1
POWERGRID	206.7	203.1	204.7	205.7	207.4	208.4	210.0	211.0
RELIANCE	1344.1	1310.0	1321.8	1332.9	1344.7	1355.8	1367.6	1378.7
SBIN	301.4	294.1	295.8	298.6	300.3	303.1	304.8	307.6
SUNPHARMA	654.5	643.0	646.3	650.4	653.6	657.7	661.0	665.1
TATAMOTORS	431.9	426.1	428.1	430.0	432.0	433.9	435.9	437.8
TATAMTRDVR	263.8	258.1	260.2	262.0	264.1	265.9	268.0	269.8
TATAPOWER	83.6	80.9	81.5	82.5	83.2	84.2	84.8	85.8
TATASTEEL	456.1	424.5	431.2	443.6	450.3	462.7	469.4	481.8
TCS	2365.1	2308.8	2325.2	2345.2	2361.6	2381.5	2397.9	2417.9
TECHM	442.6	430.8	434.5	438.5	442.2	446.3	450.0	454.0
ULTRACEMCO	4437.7	4319.5	4367.2	4402.5	4450.2	4485.5	4533.2	4568.5
WIPRO	506.3	493.6	497.6	502.0	506.0	510.3	514.3	518.7
YESBANK	1472.1	1396.0	1424.8	1448.4	1477.2	1500.9	1529.7	1553.3
ZEEL	525.6	510.7	516.1	520.8	526.2	530.9	536.3	541.0



BP WEALTH

Technical Research Desk

Tel: +91 22 61596173

Institutional Sales Desk

Tel: +91 22 61596403/04/05

Disclaimer Appendix

Analyst s holding in the Stock : Nil

Analyst s Certification:

We analysts and the authors of this report, hereby certify that all of the views expressed in this research report accurately reflect our personal views about any and all of the subject issuer s or securities. We also certify that no part of our compensation was, is, or will be directly or indirectly related to the specific recommendation s or view s in this report. Analysts aren't registered as research analysts by FINRA and might not be an associated person of the BP Equities Pvt. Ltd. Institutional Equities.

General Disclaimer

This report has been prepared by the research department of BP EQUITIES Pvt. Ltd, is for information purposes only. This report is not construed as an offer to sell or the solicitation of an offer to buy or sell any security in any jurisdiction where such an offer or solicitation would be illegal.

BP EQUITIES Pvt. Ltd have exercised due diligence in checking the correctness and authenticity of the information contained herein, so far as it relates to current and historical information, but do not guarantee its accuracy or completeness. The opinions expressed are our current opinions as of the date appearing in the material and may be subject to change from time to time. Prospective investors are cautioned that any forward looking statement are not predictions and are subject to change without prior notice.

Recipients of this material should rely on their own investigations and take their own professional advice. BP EQUITIES Pvt. Ltd or any of its affiliates or employees shall not be in any way responsible for any loss or damage that may arise to any person from any inadvertent error in the information contained in this report. BP EQUITIES Pvt. Ltd. or any of its affiliates or employees do not provide, at any time, any express or implied warranty of any kind, regarding any matter pertaining to this report, including without limitation the implied warranties of merchantability, fitness for a particular purpose, and non-infringement. The recipients of this report should rely on their own investigations.

BP EQUITIES Pvt. Ltd and/or its affiliates and/or employees may have interests/ positions, financial or otherwise in the securities mentioned in this report. Opinions expressed are our current opinions as of the date appearing on this material only. While we endeavor to update on a reasonable basis the information discussed in this material, there may be regulatory, compliance, or other reasons that prevent us from doing so.

This report is not directed to or intended for display, downloading, printing, reproducing or for distribution to or use by any person in any locality, state and country or other jurisdiction where such distribution, publication or use would be contrary to the law or regulation or would subject to BP EQUITIES Pvt. Ltd or any of its affiliates to any registration or licensing requirement within such jurisdiction.

Corporate Office:

4th floor,
Rustom Bldg,
29, Veer Nariman Road, Fort,
Mumbai-400001
Phone- +91 22 6159 6464
Fax-+91 22 6159 6160
Website- www.bpwealth.com

Registered Office:

24/26, 1st Floor, Cama Building,
Dalal street, Fort,
Mumbai-400001
BP Equities Pvt. Ltd.
CIN No: U67120MH1997PTC107392