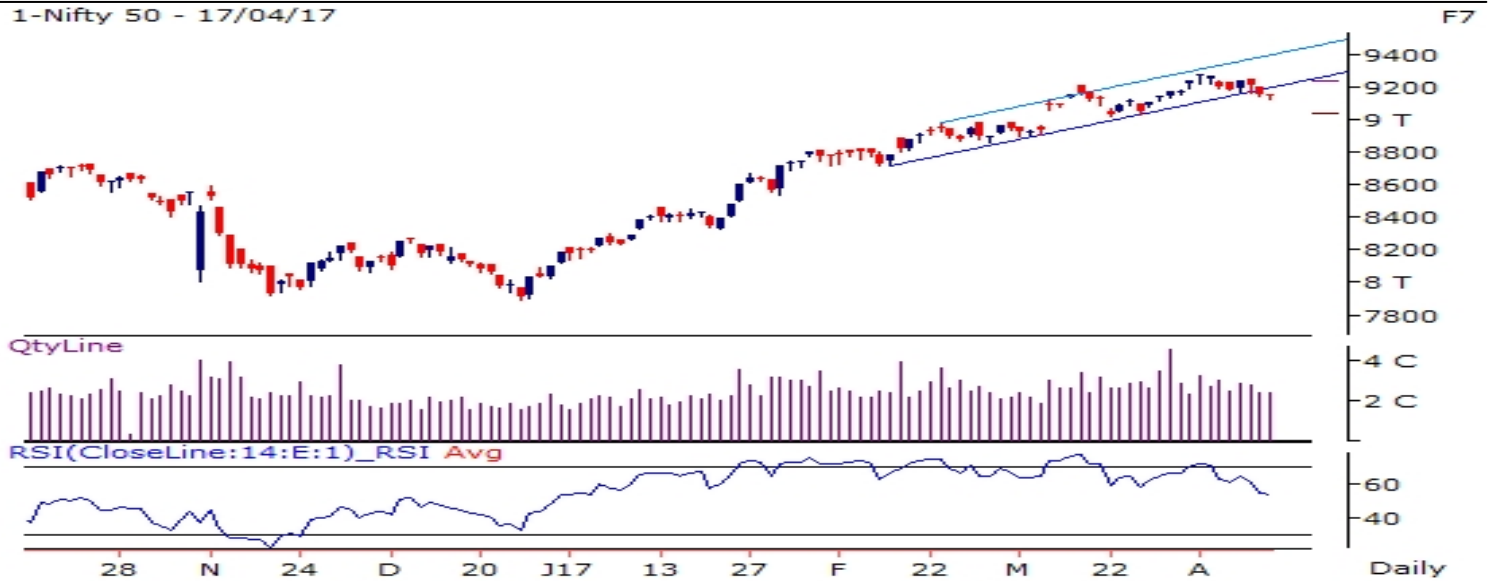


NIFTY FUT : CONTINUE PROFIT BOOKING TOWARDS 9160-9100



Source: Falcon, BP Equities Research

Nifty futures closed 0.15% lower at 9168. Index has given breakout form an up sloping parallel channel which is a bearish signal for short term trend. Earlier Index has formed Tri Star Doji candlestick pattern which suggests the recent peak to act as important resistance for short term. Going ahead till index maintains below 9210 it is expected to continue its profit booking initially towards 9160-9100 while resistance past 9210 comes at 9270.

Intraday Nifty Future Resistance—9210/9270/9310 Support—9140/9100/9000

BANK NIFTY FUT : IMMEDIATE RESISTANCE AT 21800



Source: Falcon, BP Equities Research

Bank Nifty futures closed 0.14% lower at 21702. Index formed an indecisive candlestick pattern for second consecutive day, presence of such candlestick after an up move suggests lack of buying interest at higher levels. Index is placed around the upper trend line of the up sloping channel, sustenance above the upper trend line will further accelerate the up move. Going ahead index has immediate resistance at 21800, for index to continue its up move it needs to sustain above this level which if it does will open the way for 22000 while support comes at 21630-21450.

Intraday Bank Nifty Future Resistance—21800/21900/22000 Support—21630/21450/21200

Technical Trend

INTRADAY TRADER'S PICKS

| Sr.No. | STOCK | CLOSE | S1 | S2 | S3 | R1 | R2 | R3 | RECOMMENDATION |
|--------|------------|--------|-------|-------|------|-------|------|------|-------------------------|
| 1 | BIOCON | 1111 | 1090 | 1072 | 1054 | 1142 | 1160 | 1178 | BUY ABOVE 1116 |
| 2 | GRAVITA | 60.65 | 60 | 58.5 | 57 | 63 | 64.5 | 66 | BUY ABOVE 61.5 |
| 3 | HCL-INSYS | 57.75 | 57 | 56.10 | 55.3 | 59.60 | 60.5 | 61.4 | BUY ABOVE 58.30 |
| 4 | JMFINANCIL | 104.35 | 103 | 101 | 99 | 108 | 110 | 112 | BUY ABOVE 105.5 |
| 5 | UCOBANK | 37.05 | 36.30 | 35.80 | 35.3 | 37.30 | 37.8 | 38.3 | SELL BELOW 36.80 |

Technical Trend

DERIVATIVES

INDICES SNAPSHOT

| SCRIPS | CP AS ON 13/04/2017 | CP AS ON 17/04/2017 | Change (%) | OI AS ON 13/04/2017 | OI AS ON 17/04/2017 | Change (%) |
|-----------|---------------------|---------------------|------------|---------------------|---------------------|------------|
| BANKNIFTY | 21733 | 21702.05 | -0.14 | 3198680 | 3202280 | 0.11 |
| NIFTY | 9182.25 | 9168.35 | -0.15 | 23268375 | 23261625 | -0.03 |
| NIFTYIT | 10073 | 10022 | -0.51 | 46750 | 48700 | 4.17 |

Derivative Highlights

- ⇒ Nifty Future closed with a premium of 29 points V/S a premium of 31 points.
- ⇒ Nifty Future Open Interest decreased by 0.03%. BankNifty Future Open Interest increased by 0.11%
- ⇒ Nifty PCR - OI remained unchanged at 1.09, Nifty PCR - Vol decreased from 1.20 to 1.01
- ⇒ FII Sold 250.54 crore while DII Sold Rs. 52.38 crore in the Cash Segment. FII Sold Rs. 79.08 crore in Index Futures and Bought Rs. 615.76 crore in index options, while in Stock Future they Sold Rs. 40.22 crore and Sold Rs 54.20 crore in stock options.
- ⇒ Among Index Option space, Highest Open Interest concentration was seen in 9000 & 9100 Strike price among the PE options. Where as among CE Options Highest Open Interest Concentration was seen in 9300 & 9200 Strike price.
- ⇒ Highest Open Interest Build Up among the PE options was seen in 9100 & 8900 Strike price. Among CE options highest build up was seen in 9200 & 9250 Strike price.

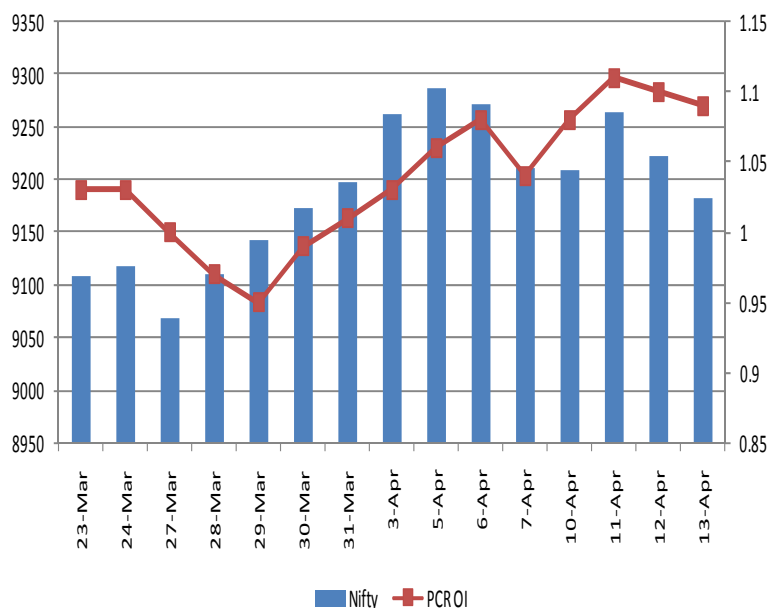
OI Concentration

| PUT OPTION | | CALL OPTION | |
|--------------|---------------|--------------|---------------|
| Strike Price | Open Interest | Strike Price | Open Interest |
| 9000 | 5833200 | 9300 | 5190150 |
| 9100 | 5564250 | 9200 | 4955025 |
| 8900 | 4030800 | 9500 | 3791625 |
| 9200 | 3918000 | 9400 | 3435375 |
| 8500 | 3349575 | 9100 | 2096925 |

Highest Change in OI

| PUT OPTION | | CALL OPTION | |
|--------------|--------------|--------------|--------------|
| Strike Price | Change in OI | Strike Price | Change in OI |
| 9100 | 400500 | 9200 | 498000 |
| 8900 | 293025 | 9250 | 431100 |
| 9250 | 127125 | 9100 | 308100 |
| 9000 | 95100 | 9300 | 180975 |
| 8500 | 78450 | 9150 | 104025 |

Nifty Future Price V/S PCR-OI



Technical Trend

Stock Analysis

| Long Build-up | Long Unwinding | Short Build-up | Short Covering |
|---------------|----------------|----------------|----------------|
| ADANIENT | IDFCBANK | ASIANPAINT | APOLLOTYRE |
| CEATLTD | JUBLFOOD | DALMIABHA | DRREDDY |
| DLF | PFC | DCBBANK | GAIL |
| ESCORTS | | ITC | IBREALEST |
| HDIL | | JUSTDIAL | IBULHSGFIN |
| PVR | | NTPC | RELIANCE |

STATISTICS

Highest Premium

| SCRIPS | Premium % | Price change % |
|------------|-----------|----------------|
| DALMIABHA | 1.23 | -1.09 |
| INFIBEAM | 1.07 | 4.79 |
| IFCI | 0.69 | 1.37 |
| GMRINFRA | 0.62 | 3.21 |
| JINDALSTEL | 0.62 | 0.86 |

Highest Discount

| SCRIPS | Premium % | Price change % |
|----------|-----------|----------------|
| OFSS | -4.24 | -0.15 |
| PNB | -1.95 | 1.60 |
| JUSTDIAL | -0.86 | -3.13 |
| CEATLTD | -0.49 | 0.16 |
| MRF | -0.46 | 2.28 |

TOP 5 VOLUME GAINER FOR THE SESSION

| SCRIPS | CP AS ON 13/04/2017 | CP AS ON 17/04/2017 | Change (%) | Vol AS ON 13/04/2017 | Vol AS ON 17/04/2017 | Change (%) |
|------------|---------------------|---------------------|------------|----------------------|----------------------|------------|
| CENTURYTEX | 1084.3 | 1129.55 | 4.17 | 1800 | 8381 | 366% |
| PFC | 163.35 | 157.3 | -3.70 | 2501 | 11415 | 356% |
| DLF | 160.55 | 173.35 | 7.97 | 6298 | 26516 | 321% |
| RECLTD | 207.85 | 202.1 | -2.77 | 4394 | 18110 | 312% |
| DCBBANK | 180.75 | 173.5 | -4.01 | 1005 | 3591 | 257% |

TOP 5 VOLUME LOSER FOR THE SESSION

| SCRIPS | CP AS ON 13/04/2017 | CP AS ON 17/04/2017 | Change (%) | Vol AS ON 13/04/2017 | Vol AS ON 17/04/2017 | Change (%) |
|-----------|---------------------|---------------------|------------|----------------------|----------------------|------------|
| INFY | 936.3 | 928.95 | -0.79 | 54584 | 9008 | -83% |
| WIPRO | 494.6 | 492.55 | -0.41 | 2982 | 1073 | -64% |
| BHARATFIN | 773.75 | 762.65 | -1.43 | 3048 | 1133 | -63% |
| SUZLON | 19.85 | 19.9 | 0.25 | 2969 | 1178 | -60% |
| LUPIN | 1442.1 | 1423 | -1.32 | 6637 | 2763 | -58% |

Technical Trend

TOP 10 OPEN INTEREST GAINER FOR THE SESSION

| SCRIPS | CP AS ON 13/04/2017 | CP AS ON 17/04/2017 | Change (%) | OI AS ON 13/04/2017 | OI AS ON 17/04/2017 | Change (%) |
|-----------|---------------------|---------------------|------------|---------------------|---------------------|------------|
| DALMIABHA | 2124.05 | 2116.1 | -0.37 | 330600 | 478800 | 44.83 |
| HDIL | 86.05 | 93.5 | 8.66 | 24648000 | 30112000 | 22.17 |
| PVR | 1568.35 | 1591.05 | 1.45 | 240000 | 284400 | 18.50 |
| DLF | 160.55 | 173.35 | 7.97 | 35850000 | 41785000 | 16.56 |
| ESCORTS | 549.1 | 552.95 | 0.70 | 925100 | 1060400 | 14.63 |
| CEATLTD | 1430.45 | 1446.4 | 1.12 | 1971900 | 2198000 | 11.47 |
| NTPC | 164.9 | 160.2 | -2.85 | 21696000 | 24144000 | 11.28 |
| DCBBANK | 180.75 | 173.5 | -4.01 | 6871500 | 7524000 | 9.50 |
| RCOM | 35.8 | 34.05 | -4.89 | 105864000 | 115632000 | 9.23 |
| IGL | 1036.05 | 1068.65 | 3.15 | 2502500 | 2697200 | 7.78 |

TOP 10 OPEN INTEREST LOSER FOR THE SESSION

| SCRIPS | CP AS ON 13/04/2017 | CP AS ON 17/04/2017 | Change (%) | OI AS ON 13/04/2017 | OI AS ON 17/04/2017 | Change (%) |
|------------|---------------------|---------------------|------------|---------------------|---------------------|------------|
| IBREALEST | 106.55 | 147.75 | 38.67 | 40210000 | 24560000 | -38.92 |
| INFIBEAM | 1030.55 | 1083.9 | 5.18 | 1348400 | 1251600 | -7.18 |
| TORNTPHARM | 1460.65 | 1469.05 | 0.58 | 253600 | 238800 | -5.84 |
| SRF | 1695.2 | 1707 | 0.70 | 959000 | 916000 | -4.48 |
| BAJAJ-AUTO | 2849.5 | 2853.65 | 0.15 | 1477500 | 1413250 | -4.35 |
| HEXAWARE | 206.2 | 206.75 | 0.27 | 4293000 | 4131000 | -3.77 |
| MUTHOOTFIN | 392.25 | 395.85 | 0.92 | 1264500 | 1224000 | -3.20 |
| APOLLOTYRE | 223.35 | 229.35 | 2.69 | 13272000 | 12870000 | -3.03 |
| COLPAL | 1016.9 | 1005.35 | -1.14 | 1045100 | 1013600 | -3.01 |
| GAIL | 381.4 | 395.55 | 3.71 | 14762000 | 14342000 | -2.85 |

Technical Trend

Pivot Report– Nifty 50

| Symbol | PClose | Support3 | Support2 | Support1 | Pivot | Resist1 | Resist2 | Resist3 |
|------------|---------|----------|----------|----------|----------------|---------|---------|---------|
| ACC | 1503.2 | 1440.8 | 1457.9 | 1480.6 | 1497.7 | 1520.3 | 1537.4 | 1560.1 |
| ADANIPTS | 320.0 | 306.4 | 312.0 | 316.0 | 321.6 | 325.6 | 331.2 | 335.2 |
| AMBUJACEM | 246.9 | 235.3 | 238.0 | 242.4 | 245.1 | 249.5 | 252.2 | 256.6 |
| ASIANPAINT | 1059.4 | 1027.0 | 1041.7 | 1050.5 | 1065.3 | 1074.1 | 1088.8 | 1097.6 |
| AUROPHARMA | 652.9 | 639.4 | 645.3 | 649.1 | 654.9 | 658.7 | 664.6 | 668.4 |
| AXISBANK | 502.4 | 491.6 | 496.4 | 499.4 | 504.2 | 507.2 | 512.0 | 515.0 |
| BAJAJ-AUTO | 2852.2 | 2795.7 | 2809.6 | 2830.9 | 2844.8 | 2866.1 | 2880.0 | 2901.3 |
| BANKBARODA | 176.0 | 171.9 | 173.6 | 174.8 | 176.4 | 177.6 | 179.3 | 180.5 |
| BHARTIARTL | 341.3 | 333.8 | 336.1 | 338.7 | 341.0 | 343.6 | 345.9 | 348.5 |
| BOSCHLTD | 22812.0 | 21804.3 | 22231.0 | 22521.5 | 22948.3 | 23238.8 | 23665.5 | 23956.0 |
| BPCL | 723.8 | 696.3 | 707.5 | 715.6 | 726.8 | 735.0 | 746.2 | 754.3 |
| CIPLA | 576.5 | 566.1 | 569.6 | 573.0 | 576.5 | 580.0 | 583.5 | 586.9 |
| COALINDIA | 285.8 | 277.9 | 281.5 | 283.7 | 287.3 | 289.5 | 293.1 | 295.3 |
| DRREDDY | 2661.3 | 2562.1 | 2606.8 | 2634.0 | 2678.8 | 2706.0 | 2750.7 | 2777.9 |
| EICHERMOT | 26125.5 | 25728.6 | 25901.8 | 26013.6 | 26186.8 | 26298.6 | 26471.8 | 26583.6 |
| GAIL | 394.5 | 368.0 | 374.0 | 384.3 | 390.3 | 400.6 | 406.6 | 416.9 |
| GRASIM | 1072.2 | 1042.5 | 1050.0 | 1061.1 | 1068.6 | 1079.7 | 1087.2 | 1098.3 |
| HCLTECH | 810.8 | 784.1 | 792.1 | 801.5 | 809.5 | 818.8 | 826.8 | 836.2 |
| HDFC | 1479.6 | 1451.8 | 1463.3 | 1471.4 | 1482.9 | 1491.1 | 1502.6 | 1510.7 |
| HDFCBANK | 1436.8 | 1413.2 | 1420.7 | 1428.8 | 1436.3 | 1444.3 | 1451.8 | 1459.9 |
| HEROMOTOCO | 3240.2 | 3171.8 | 3187.4 | 3213.8 | 3229.4 | 3255.8 | 3271.4 | 3297.8 |
| HINDALCO | 181.5 | 176.0 | 177.7 | 179.6 | 181.3 | 183.2 | 184.9 | 186.8 |
| HINDUNILVR | 914.1 | 897.8 | 905.0 | 909.5 | 916.7 | 921.2 | 928.4 | 932.9 |
| IBULHSGFIN | 977.1 | 924.0 | 939.8 | 958.4 | 974.2 | 992.9 | 1008.7 | 1027.3 |
| ICICIBANK | 282.4 | 274.8 | 277.7 | 280.0 | 282.9 | 285.2 | 288.1 | 290.4 |
| INDUSINDBK | 1435.3 | 1408.8 | 1416.9 | 1426.1 | 1434.2 | 1443.3 | 1451.4 | 1460.6 |
| INFRATEL | 344.4 | 323.1 | 331.8 | 338.1 | 346.8 | 353.1 | 361.8 | 368.1 |
| INFY | 924.9 | 913.0 | 918.2 | 921.6 | 926.8 | 930.2 | 935.4 | 938.8 |
| IOC | 424.5 | 404.6 | 411.5 | 418.0 | 424.8 | 431.3 | 438.2 | 444.7 |
| ITC | 279.1 | 268.7 | 272.1 | 275.6 | 279.1 | 282.6 | 286.0 | 289.5 |
| KOTAKBANK | 887.6 | 863.7 | 869.4 | 878.5 | 884.1 | 893.2 | 898.9 | 908.0 |
| LT | 1681.4 | 1652.9 | 1661.9 | 1671.6 | 1680.6 | 1690.3 | 1699.3 | 1709.0 |
| LUPIN | 1417.0 | 1373.3 | 1392.2 | 1404.6 | 1423.5 | 1435.9 | 1454.8 | 1467.2 |
| M&M | 1269.4 | 1251.1 | 1258.4 | 1263.9 | 1271.2 | 1276.7 | 1284.0 | 1289.5 |
| MARUTI | 6115.6 | 5928.7 | 5974.9 | 6045.2 | 6091.4 | 6161.7 | 6207.9 | 6278.2 |
| NTPC | 159.3 | 150.2 | 154.3 | 156.8 | 160.9 | 163.4 | 167.5 | 170.0 |
| ONGC | 183.1 | 179.0 | 180.8 | 181.9 | 183.7 | 184.8 | 186.6 | 187.7 |
| POWERGRID | 202.3 | 195.7 | 197.3 | 199.8 | 201.5 | 204.0 | 205.6 | 208.1 |
| RELIANCE | 1391.9 | 1342.2 | 1353.6 | 1372.7 | 1384.1 | 1403.3 | 1414.7 | 1433.8 |
| SBIN | 289.9 | 283.8 | 286.1 | 288.0 | 290.4 | 292.3 | 294.6 | 296.5 |
| SUNPHARMA | 677.1 | 657.9 | 664.1 | 670.6 | 676.8 | 683.3 | 689.5 | 696.0 |
| TATAMOTORS | 449.2 | 437.4 | 442.3 | 445.8 | 450.7 | 454.2 | 459.1 | 462.6 |
| TATAMTRDVR | 276.1 | 269.7 | 272.0 | 274.1 | 276.4 | 278.4 | 280.7 | 282.8 |
| TATAPOWER | 84.1 | 82.3 | 83.0 | 83.5 | 84.2 | 84.7 | 85.4 | 85.9 |
| TATASTEEL | 462.4 | 450.7 | 455.2 | 458.8 | 463.4 | 467.0 | 471.5 | 475.1 |
| TCS | 2314.9 | 2258.0 | 2276.6 | 2295.7 | 2314.3 | 2333.5 | 2352.1 | 2371.2 |
| TECHM | 422.0 | 408.1 | 414.1 | 418.0 | 424.0 | 427.9 | 433.9 | 437.8 |
| ULTRACEMCO | 3999.9 | 3933.9 | 3963.6 | 3981.7 | 4011.4 | 4029.5 | 4059.2 | 4077.3 |
| WIPRO | 492.3 | 484.0 | 487.1 | 489.7 | 492.7 | 495.3 | 498.4 | 501.0 |
| YESBANK | 1610.6 | 1576.4 | 1589.3 | 1600.0 | 1612.9 | 1623.6 | 1636.5 | 1647.2 |
| ZEEL | 521.2 | 506.0 | 511.6 | 516.4 | 522.1 | 526.9 | 532.5 | 537.3 |



BP WEALTH

Technical Research Desk

Tel: +91 22 61596173

Institutional Sales Desk

Tel: +91 22 61596403/04/05

Disclaimer Appendix

Analyst s holding in the Stock : Nil

Analyst s Certification:

We analysts and the authors of this report, hereby certify that all of the views expressed in this research report accurately reflect our personal views about any and all of the subject issuer s or securities. We also certify that no part of our compensation was, is, or will be directly or indirectly related to the specific recommendation s or view s in this report. Analysts aren't registered as research analysts by FINRA and might not be an associated person of the BP Equities Pvt. Ltd. Institutional Equities.

General Disclaimer

This report has been prepared by the research department of BP EQUITIES Pvt. Ltd, is for information purposes only. This report is not construed as an offer to sell or the solicitation of an offer to buy or sell any security in any jurisdiction where such an offer or solicitation would be illegal.

BP EQUITIES Pvt. Ltd have exercised due diligence in checking the correctness and authenticity of the information contained herein, so far as it relates to current and historical information, but do not guarantee its accuracy or completeness. The opinions expressed are our current opinions as of the date appearing in the material and may be subject to change from time to time. Prospective investors are cautioned that any forward looking statement are not predictions and are subject to change without prior notice.

Recipients of this material should rely on their own investigations and take their own professional advice. BP EQUITIES Pvt. Ltd or any of its affiliates or employees shall not be in any way responsible for any loss or damage that may arise to any person from any inadvertent error in the information contained in this report. BP EQUITIES Pvt. Ltd. or any of its affiliates or employees do not provide, at any time, any express or implied warranty of any kind, regarding any matter pertaining to this report, including without limitation the implied warranties of merchantability, fitness for a particular purpose, and non-infringement. The recipients of this report should rely on their own investigations.

BP EQUITIES Pvt. Ltd and/or its affiliates and/or employees may have interests/ positions, financial or otherwise in the securities mentioned in this report. Opinions expressed are our current opinions as of the date appearing on this material only. While we endeavor to update on a reasonable basis the information discussed in this material, there may be regulatory, compliance, or other reasons that prevent us from doing so.

This report is not directed to or intended for display, downloading, printing, reproducing or for distribution to or use by any person in any locality, state and country or other jurisdiction where such distribution, publication or use would be contrary to the law or regulation or would subject to BP EQUITIES Pvt. Ltd or any of its affiliates to any registration or licensing requirement within such jurisdiction.

Corporate Office:

4th floor,
Rustom Bldg,
29, Veer Nariman Road, Fort,
Mumbai-400001
Phone- +91 22 6159 6464
Fax-+91 22 6159 6160
Website- www.bpwealth.com

Registered Office:

24/26, 1st Floor, Cama Building,
Dalal street, Fort,
Mumbai-400001
BP Equities Pvt. Ltd.
CIN No: U67120MH1997PTC107392