

Technical Trend

INTRADAY TRADER'S PICKS

Sr.No.	STOCK	CLOSE	S1	S2	S3	R1	R2	R3	RECOMMENDATION
1	DLINK	108.95	108	106	104	114	116	118	BUY ABOVE 111
2	HGS	528.20	524	518	512	542	548	554	BUY ABOVE 533
3	KAMATHOTEL	49.85	48	47	46	51	52	53	SELL BELOW 49.40
4	JKIL	312.75	310	305	300	320	325	330	BUY ABOVE 315
5	SUNPHARMA	653.95	643	635	627	669	677	685	BUY ABOVE 656

Technical Trend

DERIVATIVES

INDICES SNAPSHOT

SCRIPS	CP AS ON 17/05/2017	CP AS ON 18/05/2017	Change (%)	OI AS ON 17/05/2017	OI AS ON 18/05/2017	Change (%)
BANKNIFTY	22930.9	22708.3	-0.97	3801760	3751920	-1.31
NIFTY	9533.75	9440.7	-0.98	24579675	22649400	-7.85
NIFTYIT	10422	10520	0.94	36600	37200	1.64

Derivative Highlights

- ⇒ Nifty Future closed with a premium of 12 points v/s a premium of 8 points in the previous session.
- ⇒ Nifty Future Open Interest decreased by 7.85%. BankNifty Future Open Interest decreased by 1.31%.
- ⇒ Nifty PCR - OI decreased from 1.57 to 1.30, Nifty PCR - Vol increased from 1.09 to 1.38.
- ⇒ FII Sold 360.59 crore while DII Bought Rs. 897.96 crore in the Cash Segment. FII Sold Rs. 140.66 crore in Index Futures and Bought Rs. 2685.08 crore in index options, while in Future they Sold Rs. 1123.77 crore and Sold Rs 170.46 crore in stock options.
- ⇒ Among Index Option space, Highest Open Interest concentration was seen in 9300 & 9400 Strike price among the PE options. Where as among CE Options Highest Open Interest Concentration was seen in 9500 & 9600 Strike price.
- ⇒ Highest Open Interest Build Up among the PE options was seen in 8950 & 9250 Strike price. Among CE options highest build up was seen in 9500 & 9400 Strike price.

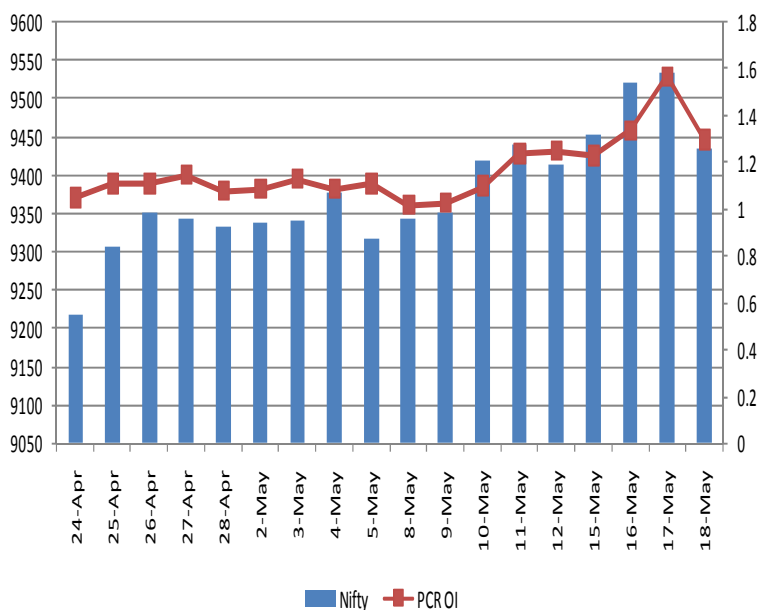
OI Concentration

PUT OPTION		CALL OPTION	
Strike Price	Open Interest	Strike Price	Open Interest
9300	6757275	9500	6187800
9400	5608050	9600	4734450
9000	4728600	9400	3710100
9200	4515225	9700	1965825
9100	4302300	9550	1706100

Highest Change in OI

PUT OPTION		CALL OPTION	
Strike Price	Change in OI	Strike Price	Change in OI
8950	46800	9500	941775
9250	13650	9400	620625
9800	4875	9450	534900
10500	3825	9550	354825
8850	3150	9600	245625

Nifty Future Price V/S PCR-OI



Technical Trend

Stock Analysis

Long Build-up	Long Unwinding	Short Build-up	Short Covering
CEATLTD	AXISBANK	APOLLOHOSP	CUMMINSIND
HEXAWARE	EICHERMOT	BHARATFORG	HDFCBANK
JPASSOCIAT	HINDUNILVR	BHEL	INFY
SUZLON	ICIL	IDBI	LUPIN
WIPRO	KOTAKBANK	MCX	MRPL
	MARUTI	YESBANK	TCS

STATISTICS

Highest Premium

SCRIPS	Premium %	Price change %
JPASSOCIAT	0.77	4.02
SUZLON	0.50	0.50
UJJIVAN	0.49	-2.69
GODREJCP	0.42	-4.21
GSFC	0.42	-4.20

Highest Discount

SCRIPS	Premium %	Price change %
CEATLTD	-4.32	-0.63
CASTROLIND	-0.98	-1.27
CANBK	-0.88	-1.51
HCLTECH	-0.62	-0.60
NESTLEIND	-0.56	-0.43

TOP 5 VOLUME GAINER FOR THE SESSION

SCRIPS	CP AS ON 17/05/2017	CP AS ON 18/05/2017	Change (%)	Vol AS ON 17/05/2017	Vol AS ON 18/05/2017	Change (%)
CEESC	979	830.35	-15.18	2048	28449	1289%
SUNTV	890.05	873.35	-1.88	1914	9745	409%
IDBI	76.1	69.9	-8.15	1876	7422	296%
SUZLON	20.05	20.1	0.25	2019	6539	224%
HCLTECH	846.35	843.1	-0.38	2416	7701	219%

TOP 5 VOLUME LOSER FOR THE SESSION

SCRIPS	CP AS ON 17/05/2017	CP AS ON 18/05/2017	Change (%)	Vol AS ON 17/05/2017	Vol AS ON 18/05/2017	Change (%)
CAPF	727.4	716.35	-1.52	16210	2191	-86%
TATASTEEL	494.55	487.1	-1.51	76826	24744	-68%
BAJFINANCE	1326.3	1312.5	-1.04	18706	7305	-61%
ADANIPOWER	33.15	31.95	-3.62	3115	1243	-60%
TATAMTRDVR	271.95	264.3	-2.81	6101	2843	-53%

Technical Trend

TOP 10 OPEN INTEREST GAINER FOR THE SESSION

SCRIPS	CP AS ON 17/05/2017	CP AS ON 18/05/2017	Change (%)	OI AS ON 17/05/2017	OI AS ON 18/05/2017	Change (%)
CEATLTD	1706.9	1755.45	2.84	1957200	2361100	20.64
IDBI	76.1	69.9	-8.15	46368000	53544000	15.48
GODREJCP	1863.25	1784.55	-4.22	559200	643600	15.09
APOLLOHOSP	1279.3	1250.5	-2.25	1870800	2133200	14.03
BHARATFORG	1125.1	1057.3	-6.03	3986400	4432200	11.18
MCX	1073.9	1007.25	-6.21	1411500	1560000	10.52
BALRAMCHIN	166.8	161.35	-3.27	8081500	8732500	8.06
VGUARD	216.4	214.6	-0.83	2754000	2961000	7.52
GLENMARK	699.95	676.95	-3.29	8668800	9310000	7.40
BHEL	171.25	164.5	-3.94	34560000	36995000	7.05

TOP 10 OPEN INTEREST LOSER FOR THE SESSION

SCRIPS	CP AS ON 17/05/2017	CP AS ON 18/05/2017	Change (%)	OI AS ON 17/05/2017	OI AS ON 18/05/2017	Change (%)
SHREECEM	18870	18767	-0.55	38650	32050	-17.08
CAPF	727.4	716.35	-1.52	6568800	5728000	-12.80
MRPL	135.7	136.2	0.37	6291000	5562000	-11.59
HINDUNILVR	1009.1	989.95	-1.90	10584600	9358200	-11.59
CHOLAFIN	1048	1033	-1.43	285500	254500	-10.86
APOLLOTYRE	238.05	232.25	-2.44	15726000	14283000	-9.18
HDIL	95.55	90.7	-5.08	34920000	31736000	-9.12
INDIANB	360.45	352.9	-2.09	2536000	2308000	-8.99
JUSTDIAL	525.6	513.2	-2.36	3592800	3271200	-8.95
NESTLEIND	6545.1	6493.1	-0.79	89600	81800	-8.71

Technical Trend

Pivot Report– Nifty 50

Symbol	PClose	Support3	Support2	Support1	Pivot	Resist1	Resist2	Resist3
ACC	1670.4	1633.5	1649.0	1659.7	1675.2	1685.9	1701.4	1712.1
ADANIPTS	347.9	322.9	332.5	340.2	349.9	357.6	367.2	374.9
AMBUJACEM	252.2	245.1	248.1	250.2	253.2	255.2	258.2	260.3
ASIANPAINT	1151.4	1121.2	1130.6	1141.0	1150.4	1160.8	1170.2	1180.6
AUOPHARMA	601.1	580.7	589.0	595.0	603.3	609.3	617.6	623.6
AXISBANK	492.0	479.6	484.9	488.5	493.8	497.3	502.6	506.2
BAJAJ-AUTO	2973.1	2874.8	2918.4	2945.8	2989.4	3016.7	3060.3	3087.7
BANKBARODA	187.5	171.9	178.6	183.0	189.7	194.1	200.8	205.2
BHARTIARTL	370.8	352.7	360.7	365.7	373.7	378.7	386.7	391.7
BOSCHLTD	23264.3	20619.2	21559.6	22411.9	23352.3	24204.7	25145.1	25997.4
BPCL	714.9	691.6	701.3	708.1	717.8	724.6	734.3	741.1
CIPLA	560.1	548.1	552.5	556.3	560.6	564.4	568.8	572.6
COALINDIA	276.5	271.4	273.2	274.8	276.6	278.2	280.0	281.6
DRREDDY	2679.0	2613.2	2642.7	2660.8	2690.3	2708.5	2738.0	2756.1
EICHERMOT	28357.3	27261.4	27737.2	28047.3	28523.1	28833.1	29308.9	29619.0
GAIL	404.8	393.7	397.6	401.2	405.1	408.7	412.6	416.2
GRASIM	1130.3	1056.3	1087.7	1109.0	1140.5	1161.8	1193.2	1214.5
HCLTECH	848.4	809.7	827.0	837.7	855.0	865.7	883.0	893.7
HDFC	1537.1	1490.7	1508.6	1522.8	1540.7	1554.9	1572.8	1587.0
HDFCBANK	1557.1	1536.2	1542.2	1549.6	1555.6	1563.0	1569.0	1576.4
HEROMOTOCO	3592.1	3504.5	3540.8	3566.4	3602.7	3628.4	3664.7	3690.3
HINDALCO	194.0	187.6	189.9	192.0	194.3	196.4	198.7	200.8
HINDUNILVR	990.3	953.2	968.1	979.2	994.1	1005.2	1020.1	1031.2
IBULHSGFIN	1053.8	1003.7	1024.4	1039.1	1059.8	1074.5	1095.2	1109.9
ICICIBANK	308.0	296.0	300.4	304.2	308.5	312.3	316.7	320.5
INDUSINDBK	1406.6	1355.1	1371.5	1389.1	1405.5	1423.1	1439.5	1457.1
INFRATEL	378.9	362.5	369.7	374.3	381.6	386.2	393.4	398.0
INFY	961.8	914.1	928.5	945.1	959.5	976.2	990.6	1007.2
IOC	439.9	430.9	435.0	437.5	441.6	444.1	448.2	450.7
ITC	277.9	272.3	274.7	276.3	278.7	280.3	282.7	284.3
KOTAKBANK	942.9	916.5	925.8	934.3	943.6	952.1	961.4	969.9
LT	1722.6	1675.6	1696.0	1709.3	1729.7	1743.0	1763.4	1776.7
LUPIN	1305.9	1247.9	1266.1	1286.0	1304.2	1324.1	1342.3	1362.2
M&M	1352.9	1318.4	1333.0	1342.9	1357.5	1367.4	1382.0	1391.9
MARUTI	6831.1	6647.5	6731.0	6781.0	6864.5	6914.6	6998.1	7048.1
NTPC	157.8	154.9	156.1	157.0	158.2	159.0	160.2	161.1
ONGC	180.9	175.6	178.0	179.5	181.9	183.4	185.8	187.3
POWERGRID	208.3	204.8	206.0	207.1	208.3	209.4	210.6	211.7
RELIANCE	1327.4	1291.7	1307.9	1317.6	1333.8	1343.5	1359.7	1369.4
SBIN	303.0	294.8	298.4	300.7	304.3	306.6	310.2	312.5
SUNPHARMA	654.0	634.7	639.1	646.5	650.9	658.3	662.7	670.1
TATAMOTORS	438.0	420.4	428.2	433.1	440.9	445.8	453.6	458.5
TATAMTRDVR	264.5	253.4	258.0	261.2	265.8	269.1	273.7	276.9
TATAPOWER	83.8	80.9	82.2	83.0	84.3	85.1	86.4	87.2
TATASTEEL	486.3	468.0	475.8	481.0	488.8	494.1	501.9	507.1
TCS	2536.2	2331.9	2387.1	2461.6	2516.8	2591.4	2646.6	2721.1
TECHM	422.3	392.5	406.3	414.3	428.1	436.1	449.9	457.9
ULTRACEMCO	4341.1	4169.9	4248.0	4294.5	4372.6	4419.2	4497.3	4543.8
WIPRO	525.4	489.5	497.6	511.5	519.7	533.6	541.7	555.6
YESBANK	1401.2	1330.6	1361.8	1381.5	1412.7	1432.4	1463.6	1483.3
ZEEL	515.6	497.9	505.5	510.5	518.1	523.1	530.7	535.7



BP WEALTH

Technical Research Desk

Tel: +91 22 61596173

Institutional Sales Desk

Tel: +91 22 61596403/04/05

Disclaimer Appendix

Analyst s holding in the Stock : Nil

Analyst s Certification:

We analysts and the authors of this report, hereby certify that all of the views expressed in this research report accurately reflect our personal views about any and all of the subject issuer s or securities. We also certify that no part of our compensation was, is, or will be directly or indirectly related to the specific recommendation s or view s in this report. Analysts aren't registered as research analysts by FINRA and might not be an associated person of the BP Equities Pvt. Ltd. Institutional Equities.

General Disclaimer

This report has been prepared by the research department of BP EQUITIES Pvt. Ltd, is for information purposes only. This report is not construed as an offer to sell or the solicitation of an offer to buy or sell any security in any jurisdiction where such an offer or solicitation would be illegal.

BP EQUITIES Pvt. Ltd have exercised due diligence in checking the correctness and authenticity of the information contained herein, so far as it relates to current and historical information, but do not guarantee its accuracy or completeness. The opinions expressed are our current opinions as of the date appearing in the material and may be subject to change from time to time. Prospective investors are cautioned that any forward looking statement are not predictions and are subject to change without prior notice.

Recipients of this material should rely on their own investigations and take their own professional advice. BP EQUITIES Pvt. Ltd or any of its affiliates or employees shall not be in any way responsible for any loss or damage that may arise to any person from any inadvertent error in the information contained in this report. BP EQUITIES Pvt. Ltd. or any of its affiliates or employees do not provide, at any time, any express or implied warranty of any kind, regarding any matter pertaining to this report, including without limitation the implied warranties of merchantability, fitness for a particular purpose, and non-infringement. The recipients of this report should rely on their own investigations.

BP EQUITIES Pvt. Ltd and/or its affiliates and/or employees may have interests/ positions, financial or otherwise in the securities mentioned in this report. Opinions expressed are our current opinions as of the date appearing on this material only. While we endeavor to update on a reasonable basis the information discussed in this material, there may be regulatory, compliance, or other reasons that prevent us from doing so.

This report is not directed to or intended for display, downloading, printing, reproducing or for distribution to or use by any person in any locality, state and country or other jurisdiction where such distribution, publication or use would be contrary to the law or regulation or would subject to BP EQUITIES Pvt. Ltd or any of its affiliates to any registration or licensing requirement within such jurisdiction.

Corporate Office:

4th floor,
Rustom Bldg,
29, Veer Nariman Road, Fort,
Mumbai-400001
Phone- +91 22 6159 6464
Fax-+91 22 6159 6160
Website- www.bpwealth.com

Registered Office:

24/26, 1st Floor, Cama Building,
Dalal street, Fort,
Mumbai-400001
BP Equities Pvt. Ltd.
CIN No: U67120MH1997PTC107392