

NIFTY FUT : CONTINUE PROFIT BOOKING TOWARDS 9040-8990



Source: Falcon, BP Equities Research

Nifty futures closed 0.13% higher at 9135. Index has given breakout from an up sloping parallel channel which is a bearish signal for short term trend. Earlier Index has formed Tri Star Doji candlestick pattern which suggests the recent peak to act as important resistance for short term. RSI has earlier formed negative divergence and is now forming lower highs and lower lows which is a bearish signal and compliments the bearish view of price. Going ahead till index maintains below 9180, it is expected to continue its profit booking towards 9040-8990 while resistance past 9180 comes at 9230.

Intraday Nifty Future Resistance—9160/9210/9270 Support—9080/9040/8990

BANK NIFTY FUT : IMMEDIATE RESISTANCE AT 21800



Source: Falcon, BP Equities Research

Bank Nifty futures closed 0.35% lower at 21617. Index formed shooting star a bearish reversal candlestick pattern which needs confirmation in the form of a lower close on the following day. Index is placed around the upper trend line of the up sloping channel, for index to continue its up move it needs to surpass the upper trend line. Going ahead index has immediate resistance at 21800, for index to continue its up move it needs to sustain above this level, a failure to do so can call for a halt in the ongoing up move and will call for profit booking initially towards 21500-21200.

Intraday Bank Nifty Future Resistance—21800/21900/22000 Support—21500/21200/21000

Technical Trend

INTRADAY TRADER'S PICKS

Sr.No.	STOCK	CLOSE	S1	S2	S3	R1	R2	R3	RECOMMENDATION
1	HCC	44.20	43.6	42.6	42.1	46	47	47.5	BUY ABOVE 44.8
2	JBCHEPHARM	334.70	329	324	319	342	347	352	BUY ABOVE 335.5
3	MRPL	121.70	119	116	113	126	129	132	BUY ABOVE 122.50
4	NILAINFRA	17.90	17.5	17.1	16.7	19.10	19.5	19.9	BUY ABOVE 18.30
5	TIMETECHNO	116.10	114	111	109	120	123	125	BUY ABOVE 117

Technical Trend

DERIVATIVES

INDICES SNAPSHOT

SCRIPS	CP AS ON 18/04/2017	CP AS ON 19/04/2017	Change (%)	OI AS ON 18/04/2017	OI AS ON 19/04/2017	Change (%)
BANKNIFTY	21692.95	21617.2	-0.35	3298800	3302120	0.10
NIFTY	9123.35	9135	0.13	23162925	23274300	0.48
NIFTYIT	9976	9968	-0.08	48600	50350	3.60

Derivative Highlights

- ⇒ Nifty Future closed with a premium of 31 points.
- ⇒ Nifty Future Open Interest decreased by 0.42%. BankNifty Future Open Interest increased by 3.01%
- ⇒ Nifty PCR - OI remained unchanged at 1.07, Nifty PCR - Vol decreased from 1.19 to 1.02
- ⇒ FII Sold 673.38 crore while DII Bought Rs. 525.52 crore in the Cash Segment. FII Sold Rs. 1027.04 crore in Index Futures and Bought Rs. 807.17 crore in index options, while in Stock Future they Bought Rs. 269.08 crore and Sold Rs 64.17 crore in stock options.
- ⇒ Among Index Option space, Highest Open Interest concentration was seen in 9100 & 9000 Strike price among the PE options. Where as among CE Options Highest Open Interest Concentration was seen in 9200 & 9300 Strike price.
- ⇒ Highest Open Interest Build Up among the PE options was seen in 9050 & 9000 Strike price. Among CE options highest build up was seen in 9100 & 9000 Strike price.

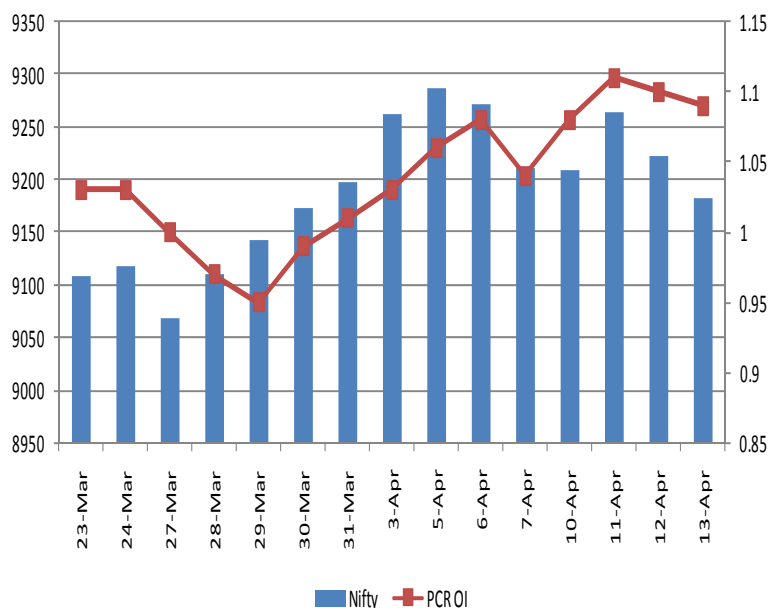
OI Concentration

PUT OPTION		CALL OPTION	
Strike Price	Open Interest	Strike Price	Open Interest
9100	5399400	9200	5023725
9000	5101425	9300	4429800
8900	4442475	9500	3752700
8500	3194100	9100	3494025
9200	3066675	9400	3295200

Highest Change in OI

PUT OPTION		CALL OPTION	
Strike Price	Change in OI	Strike Price	Change in OI
9050	327825	9100	467025
9000	161625	9000	206700
8600	142950	9150	151950
9100	126600	9400	77025
8700	88725	9250	74850

Nifty Future Price V/S PCR-OI



Technical Trend

Stock Analysis

Long Build-up	Long Unwinding	Short Build-up	Short Covering
AMARAJABAT	INDIANB	AMBUJACEM	BEL
EXIDEIND	JETAIRWAYS	AUROPHARMA	BHARATFIN
GRANULES	OFSS	HINDZINC	BRITANNIA
INDIACEM	TCS	JINDALSTEL	GLENMARK
PETRONET		STAR	NHPC
SUNTV		ULTRACEMCO	TATAPOWER

STATISTICS

Highest Premium

SCRIPS	Premium %	Price change %
SOUTHBANK	0.67	-0.22
GRANULES	0.64	2.98
HAVELLS	0.62	0.57
DCBBANK	0.60	-0.65
GODREJCP	0.59	-0.22

Highest Discount

SCRIPS	Premium %	Price change %
BANKINDIA	-1.21	-1.49
PNB	-0.98	-1.73
CANBK	-0.90	1.57
ORIENTBANK	-0.83	-0.66
INFIBEAM	-0.31	2.26

TOP 5 VOLUME GAINER FOR THE SESSION

SCRIPS	CP AS ON 18/04/2017	CP AS ON 19/04/2017	Change (%)	Vol AS ON 18/04/2017	Vol AS ON 19/04/2017	Change (%)
JISLJALEQS	99.5	108.2	8.74	1607	10260	538%
JINDALSTEL	119.2	112.9	-5.29	1079	6742	525%
POWERGRID	202.35	211.85	4.69	2128	7142	236%
TCS	2307.25	2301.6	-0.24	8112	23814	194%
INDUSINDBK	1435.95	1428.35	-0.53	5458	14250	161%

TOP 5 VOLUME LOSER FOR THE SESSION

SCRIPS	CP AS ON 18/04/2017	CP AS ON 19/04/2017	Change (%)	Vol AS ON 18/04/2017	Vol AS ON 19/04/2017	Change (%)
ADANIENT	144.95	145.8	0.59	34623	9111	-74%
RELINFRA	559.55	565	0.97	22490	6319	-72%
HDIL	88	90.25	2.56	9759	2846	-71%
ADANIPOWER	320.55	326.65	1.90	12734	4708	-63%
ADANIPOWER	33.25	33.15	-0.30	3446	1335	-61%

Technical Trend

TOP 10 OPEN INTEREST GAINER FOR THE SESSION

SCRIPS	CP AS ON 18/04/2017	CP AS ON 19/04/2017	Change (%)	OI AS ON 18/04/2017	OI AS ON 19/04/2017	Change (%)
JINDALSTEL	119.2	112.9	-5.29	39546000	47898000	21.12
SUNTV	801.45	844.05	5.32	6524000	7794000	19.47
CESC	862.05	896.75	4.03	5726600	6675900	16.58
AMARAJABAT	857.65	873.65	1.87	2172600	2397000	10.33
INDIACEM	160.7	175.2	9.02	23558500	25903500	9.95
AMBUJACEM	241.7	241.3	-0.17	12502500	13702500	9.60
SAIL	60.3	60.9	1.00	69648000	75192000	7.96
MUTHOOTFIN	397.65	408.25	2.67	1396500	1501500	7.52
WIPRO	493.35	497.85	0.91	10132800	10886400	7.44
BANKINDIA	148.3	147.35	-0.64	28104000	30144000	7.26

TOP 10 OPEN INTEREST LOSER FOR THE SESSION

SCRIPS	CP AS ON 18/04/2017	CP AS ON 19/04/2017	Change (%)	OI AS ON 18/04/2017	OI AS ON 19/04/2017	Change (%)
HDIL	88	90.25	2.56	29928000	26120000	-12.72
IBREALEST	135.05	137.4	1.74	20870000	19100000	-8.48
CAIRN	282.45	287.2	1.68	23016000	21287000	-7.51
BRITANNIA	3373.9	3432.9	1.75	364400	339600	-6.81
ADANI PORTS	320.55	326.65	1.90	19262500	18317500	-4.91
COALINDIA	279.4	282.9	1.25	21875600	20910000	-4.41
VOLTAS	408.55	416.3	1.90	8152000	7798000	-4.34
VEDL	231.35	235.75	1.90	49241500	47484500	-3.57
TCS	2307.25	2301.6	-0.24	6513250	6293250	-3.38
CGPOWER	78.8	80	1.52	16104000	15588000	-3.20

Technical Trend

Pivot Report– Nifty 50

Symbol	PClose	Support3	Support2	Support1	Pivot	Resist1	Resist2	Resist3
ACC	1511.4	1459.5	1472.5	1491.9	1504.9	1524.4	1537.4	1556.8
ADANIPTS	325.8	312.4	315.8	320.8	324.2	329.2	332.6	337.6
AMBUJACEM	240.2	232.2	234.5	237.3	239.6	242.4	244.7	247.5
ASIANPAINT	1048.9	1014.1	1023.9	1036.4	1046.2	1058.7	1068.5	1081.0
AUOPHARMA	640.1	584.8	607.9	624.0	647.1	663.1	686.2	702.3
AXISBANK	499.5	478.2	483.2	491.4	496.4	504.6	509.6	517.8
BAJAJ-AUTO	2808.7	2744.6	2766.3	2787.5	2809.3	2830.5	2852.2	2873.4
BANKBARODA	174.9	169.1	171.2	173.0	175.1	176.9	179.0	180.8
BHARTIARTL	340.0	325.6	329.2	334.6	338.2	343.6	347.2	352.6
BOSCHLTD	22475.4	21985.3	22193.2	22334.3	22542.1	22683.2	22891.1	23032.2
BPCL	722.9	692.5	702.1	712.5	722.1	732.5	742.1	752.5
CIPLA	575.4	568.9	570.8	573.1	575.1	577.4	579.3	581.6
COALINDIA	282.7	270.8	273.4	278.1	280.7	285.4	288.0	292.7
DRREDDY	2607.4	2561.1	2581.8	2594.6	2615.3	2628.1	2648.8	2661.6
EICHERMOT	25457.6	24913.9	25128.4	25293.0	25507.5	25672.1	25886.6	26051.2
GAIL	393.8	377.8	383.4	388.6	394.3	399.5	405.1	410.3
GRASIM	1082.2	1038.1	1049.5	1065.9	1077.3	1093.7	1105.1	1121.5
HCLTECH	808.6	786.3	795.1	801.9	810.7	817.5	826.3	833.1
HDFC	1490.2	1454.1	1462.1	1476.2	1484.2	1498.3	1506.3	1520.4
HDFCBANK	1449.0	1420.3	1429.2	1439.1	1447.9	1457.8	1466.7	1476.6
HEROMOTOCO	3199.8	3114.2	3146.6	3173.2	3205.6	3232.2	3264.6	3291.2
HINDALCO	186.0	177.8	179.9	183.0	185.1	188.1	190.2	193.3
HINDUNILVR	908.6	891.1	898.6	903.6	911.0	916.0	923.5	928.5
IBULHSGFIN	957.2	918.5	929.7	943.4	954.7	968.4	979.6	993.3
ICICIBANK	280.6	271.8	275.3	277.9	281.5	284.1	287.6	290.2
INDUSINDBK	1421.6	1375.3	1393.4	1407.5	1425.6	1439.7	1457.8	1471.9
INFRATEL	346.7	323.7	328.7	337.7	342.7	351.7	356.7	365.7
INFY	919.2	893.9	903.3	911.2	920.6	928.6	938.0	945.9
IOC	435.3	417.3	421.7	428.5	432.9	439.6	444.0	450.8
ITC	278.7	273.6	275.7	277.2	279.4	280.9	283.0	284.5
KOTAKBANK	875.6	853.6	860.4	868.0	874.8	882.4	889.2	896.8
LT	1670.6	1650.1	1656.0	1663.3	1669.1	1676.4	1682.3	1689.6
LUPIN	1410.3	1389.8	1398.9	1404.6	1413.7	1419.4	1428.5	1434.2
M&M	1259.5	1236.1	1244.6	1252.0	1260.5	1267.9	1276.4	1283.8
MARUTI	6197.0	6024.5	6069.2	6133.1	6177.7	6241.6	6286.3	6350.2
NTPC	164.9	157.2	159.2	162.0	164.0	166.8	168.8	171.6
ONGC	179.9	176.0	177.6	178.7	180.3	181.5	183.1	184.2
POWERGRID	211.2	192.7	197.3	204.3	208.9	215.8	220.4	227.4
RELIANCE	1368.8	1331.7	1344.6	1356.7	1369.6	1381.7	1394.6	1406.7
SBIN	284.1	271.9	277.4	280.7	286.2	289.6	295.1	298.4
SUNPHARMA	663.4	643.2	652.3	657.8	666.9	672.4	681.5	687.0
TATAMOTORS	443.1	426.5	432.4	437.7	443.6	448.9	454.8	460.1
TATAMTRDVR	271.6	261.6	264.4	268.0	270.8	274.4	277.2	280.8
TATAPOWER	85.7	81.7	82.9	84.3	85.5	86.8	88.0	89.4
TATASTEEL	450.8	429.9	436.0	443.4	449.4	456.8	462.9	470.3
TCS	2299.2	2155.8	2204.3	2251.7	2300.2	2347.6	2396.1	2443.5
TECHM	414.3	396.3	404.4	409.3	417.4	422.4	430.5	435.4
ULTRACEMCO	3939.8	3827.4	3876.7	3908.3	3957.6	3989.1	4038.4	4070.0
WIPRO	498.3	483.3	486.8	492.5	496.0	501.8	505.3	511.0
YESBANK	1605.5	1565.4	1578.8	1592.1	1605.6	1618.9	1632.3	1645.6
ZEEL	521.9	509.7	513.2	517.5	521.0	525.3	528.8	533.1



BP WEALTH

Technical Research Desk

Tel: +91 22 61596173

Institutional Sales Desk

Tel: +91 22 61596403/04/05

Disclaimer Appendix

Analyst s holding in the Stock : Nil

Analyst s Certification:

We analysts and the authors of this report, hereby certify that all of the views expressed in this research report accurately reflect our personal views about any and all of the subject issuer s or securities. We also certify that no part of our compensation was, is, or will be directly or indirectly related to the specific recommendation s or view s in this report. Analysts aren't registered as research analysts by FINRA and might not be an associated person of the BP Equities Pvt. Ltd. Institutional Equities.

General Disclaimer

This report has been prepared by the research department of BP EQUITIES Pvt. Ltd, is for information purposes only. This report is not construed as an offer to sell or the solicitation of an offer to buy or sell any security in any jurisdiction where such an offer or solicitation would be illegal.

BP EQUITIES Pvt. Ltd have exercised due diligence in checking the correctness and authenticity of the information contained herein, so far as it relates to current and historical information, but do not guarantee its accuracy or completeness. The opinions expressed are our current opinions as of the date appearing in the material and may be subject to change from time to time. Prospective investors are cautioned that any forward looking statement are not predictions and are subject to change without prior notice.

Recipients of this material should rely on their own investigations and take their own professional advice. BP EQUITIES Pvt. Ltd or any of its affiliates or employees shall not be in any way responsible for any loss or damage that may arise to any person from any inadvertent error in the information contained in this report. BP EQUITIES Pvt. Ltd. or any of its affiliates or employees do not provide, at any time, any express or implied warranty of any kind, regarding any matter pertaining to this report, including without limitation the implied warranties of merchantability, fitness for a particular purpose, and non-infringement. The recipients of this report should rely on their own investigations.

BP EQUITIES Pvt. Ltd and/or its affiliates and/or employees may have interests/ positions, financial or otherwise in the securities mentioned in this report. Opinions expressed are our current opinions as of the date appearing on this material only. While we endeavor to update on a reasonable basis the information discussed in this material, there may be regulatory, compliance, or other reasons that prevent us from doing so.

This report is not directed to or intended for display, downloading, printing, reproducing or for distribution to or use by any person in any locality, state and country or other jurisdiction where such distribution, publication or use would be contrary to the law or regulation or would subject to BP EQUITIES Pvt. Ltd or any of its affiliates to any registration or licensing requirement within such jurisdiction.

Corporate Office:

4th floor,
Rustom Bldg,
29, Veer Nariman Road, Fort,
Mumbai-400001
Phone- +91 22 6159 6464
Fax-+91 22 6159 6160
Website- www.bpwealth.com

Registered Office:

24/26, 1st Floor, Cama Building,
Dalal street, Fort,
Mumbai-400001
BP Equities Pvt. Ltd.
CIN No: U67120MH1997PTC107392