

Technical Trend

INTRADAY TRADER'S PICKS

Sr.No.	STOCK	CLOSE	S1	S2	S3	R1	R2	R3	RECOMMENDATION
1	BIOCON	1127	1120	1105	1090	1150	1165	1175	BUY ABOVE 1135
2	COALINDIA	291.80	288	283	278	298	303	308	BUY ABOVE 293
3	SYNDIBANK	69.20	68	67	66	71	72	73	BUY ABOVE 69.5
4	UPERGANGES	391.05	388	384	380	400	404	408	BUY ABOVE 394
5	VARDMPOLY	77.30	76.20	74.7	73.2	79.20	80.7	82.2	BUY ABOVE 77.70

Technical Trend

DERIVATIVES

INDICES SNAPSHOT

SCRIPS	CP AS ON 17/03/2017	CP AS ON 20/03/2017	Change (%)	OI AS ON 17/03/2017	OI AS ON 20/03/2017	Change (%)
BANKNIFTY	21234.5	21182.55	-0.24	2459520	2476880	0.71
NIFTY	9171.75	9153.55	-0.20	31709625	32523300	2.57
NIFTYIT	10905	10788	-1.07	53350	52400	-1.78

Derivative Highlights

- ⇒ Nifty Future closed with a premium of 27 points.
- ⇒ Nifty Future Open Interest increased by 2.57%. BankNifty Future Open Interest increased by 0.71%
- ⇒ Nifty PCR - OI was observed to be 1.10, Nifty PCR - Vol was observed to be 1.13
- ⇒ FII Bought Rs. 56.67 crore while DII Sold Rs. 536.21 crore in the Cash Segment. FII Bought Rs. 776.69 crore in Index Futures and Bought Rs. 89.44 crore in index options, while in Stock Future they Sold Rs. 1280.37 crore and Bought Rs 31.29 crore in stock options.
- ⇒ Among Index Option space, Highest Open Interest concentration was seen in 8800 & 8900 Strike price among the PE options. Where as among CE Options Highest Open Interest Concentration was seen in 9200 & 9300 Strike price.
- ⇒ Highest Open Interest Build Up among the PE options was seen in 9000 & 8950 Strike price. Among CE options highest build up was seen in 9200 & 9250 Strike price.

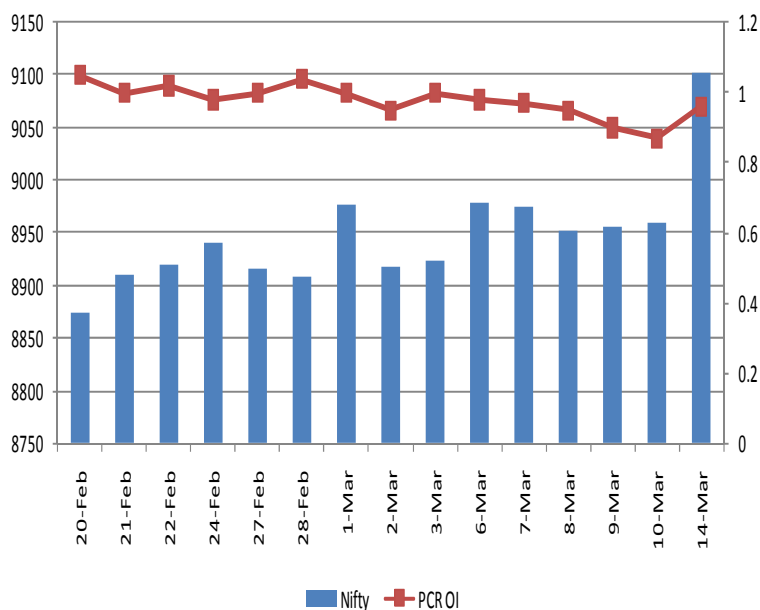
OI Concentration

PUT OPTION		CALL OPTION	
Strike Price	Open Interest	Strike Price	Open Interest
8800	5623350	9200	6037050
8900	5551200	9300	4300425
9000	5523525	9100	3696600
9100	4802250	9500	3301050
8700	3419550	9400	2817825

Highest Change in OI

PUT OPTION		CALL OPTION	
Strike Price	Change in OI	Strike Price	Change in OI
9000	115125	9200	273825
8950	57900	9250	191400
9100	41625	9150	150075
8200	28950	9450	135450
9050	28050	9350	81150

Nifty Future Price V/S PCR-OI



Technical Trend

Stock Analysis

Long Build-up	Long Unwinding	Short Build-up	Short Covering
ABIRLANUVO	DISHTV	ACC	AUROPHARMA
AJANTPHARM	GAIL	GLENMARK	BANKINDIA
DIVISLAB	JPASSOCIAT	HCLTECH	EICHERMOT
KSCL		IDEA	MINDTREE
PCJEWELLER		JINDALSTEL	MOTHERSUMI
TATAGLOBAL		TCS	STAR

STATISTICS

Highest Premium

SCRIPS	Premium %	Price change %
GMRINFRA	0.60	0.00
SYNDIBANK	0.51	0.95
EXIDEIND	0.50	-0.27
SOUTHBANK	0.49	-0.49
IDFCBANK	0.49	-0.40

Highest Discount

SCRIPS	Premium %	Price change %
HINDZINC	-5.64	0.42
PFC	-2.71	3.08
ENGINEERSIN	-1.29	0.10
UNIONBANK	-1.17	2.57
INFRATEL	-0.42	-0.29

TOP 5 VOLUME GAINER FOR THE SESSION

SCRIPS	CP AS ON 17/03/2017	CP AS ON 20/03/2017	Change (%)	Vol AS ON 17/03/2017	Vol AS ON 20/03/2017	Change (%)
IDEA	108.3	97.85	-9.65	9610	64754	574%
ABIRLANUVO	1517.9	1546	1.85	1555	5437	250%
KSCL	531.85	551.9	3.77	1492	4564	206%
GRASIM	1044.7	1066.55	2.09	2745	8187	198%
DIVISLAB	764.25	793.85	3.87	2442	7273	198%

TOP 5 VOLUME LOSER FOR THE SESSION

SCRIPS	CP AS ON 17/03/2017	CP AS ON 20/03/2017	Change (%)	Vol AS ON 17/03/2017	Vol AS ON 20/03/2017	Change (%)
JETAIRWAYS	479.05	474.55	-0.94	13561	2071	-85%
RELCAPITAL	603.1	607.9	0.80	25551	5075	-80%
ITC	282.05	282.8	0.27	24399	5846	-76%
BHARATFIN	832.4	826.35	-0.73	7429	1968	-74%
UPL	719.25	718.7	-0.08	6322	1751	-72%

Technical Trend

TOP 10 OPEN INTEREST GAINER FOR THE SESSION

SCRIPS	CP AS ON 17/03/2017	CP AS ON 20/03/2017	Change (%)	OI AS ON 17/03/2017	OI AS ON 20/03/2017	Change (%)
PCJEWELLER	415.85	440.7	5.98	924000	1144500	23.86
AJANTPHARM	1793.3	1822.2	1.61	525200	617200	17.52
GLENMARK	886.85	882.35	-0.51	3424400	3848600	12.39
ORIENTBANK	128	133.85	4.57	15564000	17418000	11.91
HCLTECH	867.25	865.45	-0.21	7481600	8228500	9.98
SIEMENS	1263.45	1251.65	-0.93	902000	989000	9.65
ICICIBANK	281.7	276.25	-1.93	63157500	68717500	8.80
PAGEIND	14771.85	14688.2	-0.57	31300	33900	8.31
PFC	140.05	141.8	1.25	34938000	37626000	7.69
SUNTV	749.2	759.1	1.32	7686000	8272000	7.62

TOP 10 OPEN INTEREST LOSER FOR THE SESSION

SCRIPS	CP AS ON 17/03/2017	CP AS ON 20/03/2017	Change (%)	OI AS ON 17/03/2017	OI AS ON 20/03/2017	Change (%)
RELCAPITAL	603.1	607.9	0.80	12942000	11457000	-11.47
TORNTPHARM	1453.6	1443.25	-0.71	256000	228000	-10.94
MRF	55663.95	56168.5	0.91	61710	56865	-7.85
JETAIRWAYS	479.05	474.55	-0.94	6354000	5872000	-7.59
SINTEX	100.95	99.75	-1.19	52240500	49974750	-4.34
RECLTD	168	168.65	0.39	30576000	29322000	-4.10
TATASTEEL	502.85	498.65	-0.84	22786000	21888000	-3.94
AMARAJABAT	877.45	876.35	-0.13	2042400	1963800	-3.85
APOLLOTYRE	199.7	203.3	1.80	15873000	15276000	-3.76
GAIL	376.85	375.95	-0.24	33412000	32328000	-3.24

Technical Trend

Pivot Report– Nifty 50

Symbol	PClose	Support3	Support2	Support1	Pivot	Resist1	Resist2	Resist3
ACC	1408.7	1391.7	1398.6	1403.7	1410.6	1415.6	1422.5	1427.6
ADANIPTS	325.5	318.4	321.6	323.5	326.7	328.6	331.8	333.7
AMBUJACEM	234.2	229.8	231.0	232.6	233.9	235.5	236.7	238.3
ASIANPAINT	1079.7	1054.4	1060.8	1070.2	1076.6	1086.1	1092.5	1101.9
AUROPHARMA	704.9	668.1	676.2	690.6	698.7	713.0	721.1	735.5
AXISBANK	502.9	479.7	490.5	496.7	507.5	513.6	524.4	530.6
BAJAJ-AUTO	2923.6	2881.0	2893.1	2908.3	2920.4	2935.7	2947.8	2963.0
BANKBARODA	165.6	159.0	161.1	163.3	165.4	167.6	169.7	171.9
BHARTIARTL	349.4	328.6	333.9	341.7	347.0	354.7	360.0	367.8
BHEL	170.9	164.7	166.2	168.6	170.1	172.5	174.0	176.4
BOSCHLTD	22674.7	22241.9	22428.6	22551.6	22738.3	22861.4	23048.1	23171.1
BPCL	643.6	624.0	629.7	636.6	642.3	649.3	655.0	661.9
CIPLA	596.3	584.6	589.0	592.7	597.1	600.7	605.1	608.8
COALINDIA	291.8	284.8	286.4	289.1	290.8	293.5	295.1	297.8
DRREDDY	2734.4	2711.6	2720.8	2727.6	2736.8	2743.6	2752.8	2759.6
EICHERMOT	25099.3	24147.0	24374.6	24736.9	24964.5	25326.8	25554.4	25916.7
GAIL	374.4	365.4	368.3	371.3	374.2	377.2	380.1	383.1
GRASIM	1062.5	1004.6	1019.2	1040.8	1055.4	1077.1	1091.7	1113.3
HCLTECH	864.4	839.5	850.3	857.3	868.2	875.2	886.0	893.0
HDFC	1457.8	1430.2	1438.6	1448.2	1456.6	1466.2	1474.6	1484.2
HDFCBANK	1436.1	1414.2	1420.1	1428.1	1434.0	1442.0	1447.9	1455.9
HEROMOTOCO	3340.3	3277.9	3302.3	3321.3	3345.6	3364.6	3389.0	3408.0
HINDALCO	196.2	187.4	189.5	192.9	195.0	198.3	200.4	203.8
HINDUNILVR	898.5	872.0	884.0	891.2	903.2	910.5	922.5	929.7
ICICIBANK	275.1	267.1	270.6	272.8	276.3	278.5	282.0	284.2
IDEA	97.7	54.4	73.4	85.5	104.5	116.7	135.7	147.8
INDUSINDBK	1379.6	1354.4	1364.1	1371.8	1381.5	1389.2	1398.9	1406.6
INFRATEL	308.8	292.7	298.2	303.5	309.0	314.3	319.8	325.1
INFY	1021.5	1004.1	1009.6	1015.6	1021.1	1027.0	1032.5	1038.5
ITC	281.9	272.0	274.9	278.4	281.3	284.8	287.7	291.2
KOTAKBANK	854.6	833.7	840.9	847.7	854.9	861.7	868.9	875.7
LT	1537.7	1510.0	1522.6	1530.1	1542.8	1550.3	1562.9	1570.4
LUPIN	1464.7	1447.1	1452.4	1458.5	1463.8	1469.9	1475.2	1481.3
M&M	1300.2	1272.2	1284.3	1292.3	1304.4	1312.3	1324.4	1332.4
MARUTI	6158.9	6064.4	6107.8	6133.3	6176.7	6202.2	6245.6	6271.1
NTPC	161.4	157.0	158.0	159.7	160.8	162.5	163.5	165.2
ONGC	190.9	187.8	188.8	189.8	190.8	191.8	192.8	193.8
POWERGRID	193.6	191.1	191.9	192.8	193.6	194.5	195.3	196.2
RELIANCE	1280.8	1242.8	1260.6	1270.7	1288.5	1298.6	1316.4	1326.5
SBIN	273.9	269.3	270.5	272.2	273.5	275.2	276.4	278.1
SUNPHARMA	706.6	697.2	700.9	703.7	707.4	710.2	713.9	716.7
TATAMOTORS	476.0	464.3	467.5	471.8	475.0	479.2	482.4	486.7
TATAMTRDVR	288.7	280.9	282.8	285.7	287.6	290.5	292.4	295.3
TATAPOWER	87.2	84.7	85.5	86.3	87.1	87.9	88.7	89.5
TATASTEEL	496.7	480.8	486.4	491.5	497.1	502.2	507.8	512.9
TCS	2480.0	2395.4	2430.7	2455.4	2490.7	2515.3	2550.6	2575.3
TECHM	481.9	466.8	473.4	477.7	484.3	488.6	495.2	499.5
ULTRACEMCO	3999.8	3927.2	3958.6	3979.2	4010.6	4031.2	4062.6	4083.2
WIPRO	497.5	484.7	489.9	493.7	499.0	502.8	508.0	511.8
YESBANK	1515.8	1490.3	1498.7	1507.2	1515.6	1524.1	1532.5	1541.0
ZEEL	521.1	508.2	512.4	516.8	521.0	525.3	529.5	533.9



BP WEALTH

Technical Research Desk

Tel: +91 22 61596173

Institutional Sales Desk

Tel: +91 22 61596403/04/05

Disclaimer Appendix

Analyst s holding in the Stock : Nil

Analyst s Certification:

We analysts and the authors of this report, hereby certify that all of the views expressed in this research report accurately reflect our personal views about any and all of the subject issuer s or securities. We also certify that no part of our compensation was, is, or will be directly or indirectly related to the specific recommendation s or view s in this report. Analysts aren't registered as research analysts by FINRA and might not be an associated person of the BP Equities Pvt. Ltd. Institutional Equities.

General Disclaimer

This report has been prepared by the research department of BP EQUITIES Pvt. Ltd, is for information purposes only. This report is not construed as an offer to sell or the solicitation of an offer to buy or sell any security in any jurisdiction where such an offer or solicitation would be illegal.

BP EQUITIES Pvt. Ltd have exercised due diligence in checking the correctness and authenticity of the information contained herein, so far as it relates to current and historical information, but do not guarantee its accuracy or completeness. The opinions expressed are our current opinions as of the date appearing in the material and may be subject to change from time to time. Prospective investors are cautioned that any forward looking statement are not predictions and are subject to change without prior notice.

Recipients of this material should rely on their own investigations and take their own professional advice. BP EQUITIES Pvt. Ltd or any of its affiliates or employees shall not be in any way responsible for any loss or damage that may arise to any person from any inadvertent error in the information contained in this report. BP EQUITIES Pvt. Ltd. or any of its affiliates or employees do not provide, at any time, any express or implied warranty of any kind, regarding any matter pertaining to this report, including without limitation the implied warranties of merchantability, fitness for a particular purpose, and non-infringement. The recipients of this report should rely on their own investigations.

BP EQUITIES Pvt. Ltd and/or its affiliates and/or employees may have interests/ positions, financial or otherwise in the securities mentioned in this report. Opinions expressed are our current opinions as of the date appearing on this material only. While we endeavor to update on a reasonable basis the information discussed in this material, there may be regulatory, compliance, or other reasons that prevent us from doing so.

This report is not directed to or intended for display, downloading, printing, reproducing or for distribution to or use by any person in any locality, state and country or other jurisdiction where such distribution, publication or use would be contrary to the law or regulation or would subject to BP EQUITIES Pvt. Ltd or any of its affiliates to any registration or licensing requirement within such jurisdiction.

Corporate Office:

4th floor,
Rustom Bldg,
29, Veer Nariman Road, Fort,
Mumbai-400001
Phone- +91 22 6159 6464
Fax-+91 22 6159 6160
Website- www.bpwealth.com

Registered Office:

24/26, 1st Floor, Cama Building,
Dalal street, Fort,
Mumbai-400001
BP Equities Pvt. Ltd.
CIN No: U67120MH1997PTC107392