



## Technical Trend

### INTRADAY TRADER'S PICKS

Sr.No.	STOCK	CLOSE	S1	S2	S3	R1	R2	R3	RECOMMENDATION
1	ALEMBICLTD	44.60	44	43	42	46	47	48	<b>BUY ABOVE 45</b>
2	FORTIS	203.55	200	195	191	210	215	219	<b>BUY ABOVE 205</b>
3	KSCL	538.70	534	528	522	550	556	562	<b>BUY ABOVE 542</b>
4	SPAL	377.50	374	369	365	390	395	399	<b>BUY ABOVE 382</b>
5	UPL	791.45	785	775	765	805	815	825	<b>BUY ABOVE 795</b>

## Technical Trend

### DERIVATIVES

#### INDICES SNAPSHOT

SCRIPS	CP AS ON 18/05/2017	CP AS ON 19/05/2017	Change (%)	OI AS ON 18/05/2017	OI AS ON 19/05/2017	Change (%)
BANKNIFTY	22708.3	22798.35	0.40	3751920	3573520	-4.75
NIFTY	9440.7	9445.75	0.05	22649400	22216875	-1.91
NIFTYIT	10520	10464	-0.53	37200	37800	1.61

#### Derivative Highlights

- ⇒ Nifty Future closed with a premium of 18 points v/s a premium of 16 points in the previous session.
- ⇒ Nifty Future Open Interest decreased by 1.91%. BankNifty Future Open Interest decreased by 4.75%.
- ⇒ Nifty PCR - OI decreased from 1.30 to 1.21, Nifty PCR - Vol decreased from 1.38 to 1.22.
- ⇒ FII Sold 988.70 crore while DII Bought Rs. 349.21 crore in the Cash Segment. FII Bought Rs. 333.42 crore in Index Futures and Bought Rs. 966.38 crore in index options, while in Future they Bought Rs. 670.72 crore and Sold Rs 11.81 crore in stock options.
- ⇒ Among Index Option space, Highest Open Interest concentration was seen in 9300 & 9400 Strike price among the PE options. Where as among CE Options Highest Open Interest Concentration was seen in 9500 & 9600 Strike price.
- ⇒ Highest Open Interest Build Up among the PE options was seen in 8450 & 9300 Strike price. Among CE options highest build up was seen in 9450 & 8400 Strike price.

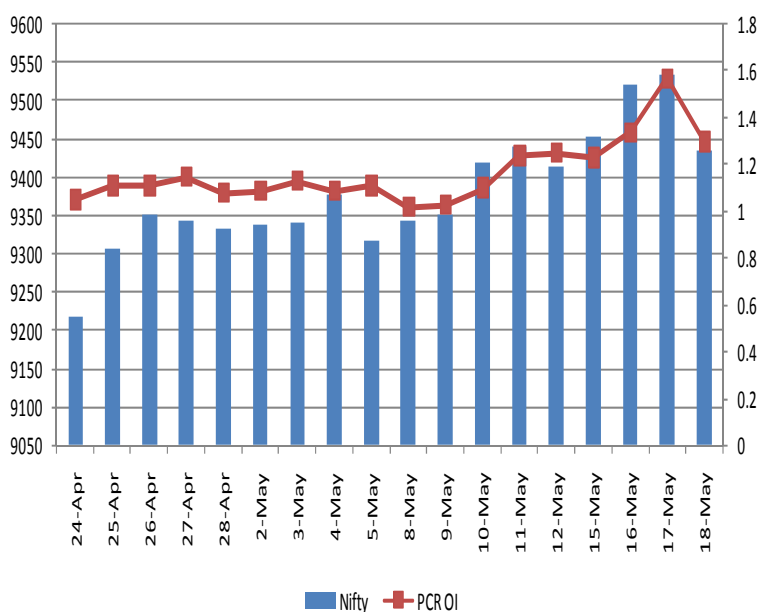
#### OI Concentration

PUT OPTION		CALL OPTION	
Strike Price	Open Interest	Strike Price	Open Interest
9300	6561825	9500	6140475
9400	5689200	9600	4934250
9000	4556775	9400	3471150
9100	4043775	9700	2166150
9200	4025475	9550	1862100

#### Highest Change in OI

PUT OPTION		CALL OPTION	
Strike Price	Change in OI	Strike Price	Change in OI
9450	309075	9450	610875
9300	253275	8400	200925
8900	160125	9700	200325
9000	152700	9600	199800
9400	149025	9550	156000

#### Nifty Future Price V/S PCR-OI



## Technical Trend

### Stock Analysis

Long Build-up	Long Unwinding	Short Build-up	Short Covering
CASTROLIND	AMBUJACEM	BAJAJFINSV	ADANIPOWER
COALINDIA	BOSCHLTD	BANKINDIA	AXISBANK
GMRINFRA	JSWENERGY	DRREDDY	DLF
LT	MARUTI	HAVELLS	HDFCBANK
MOTHERSUMI	ORIENTBANK	L&TFH	IDEA
TATAMOTORS	TATACHEM	RELIANCE	INFRATEL

### STATISTICS

#### Highest Premium

SCRIPS	Premium %	Price change %
INDIAVIX	1.81	-4.09
ICIL	0.96	-0.57
IDBI	0.58	-1.72
SUZLON	0.49	3.00
UJJIVAN	0.47	-5.73

#### Highest Discount

SCRIPS	Premium %	Price change %
CESC	0.03	5.69
COLPAL	0.25	3.71
MOTHERSUMI	-0.07	3.65
FORTIS	0.22	3.40
SUZLON	0.49	3.00

#### TOP 5 VOLUME GAINER FOR THE SESSION

SCRIPS	CP AS ON 18/05/2017	CP AS ON 19/05/2017	Change (%)	Vol AS ON 18/05/2017	Vol AS ON 19/05/2017	Change (%)
UJJIVAN	341.8	322.15	-5.75	820	5390	557%
MUTHOOTFIN	379.55	380.05	0.13	454	2878	534%
MOTHERSUMI	409.55	423.3	3.36	1671	9254	454%
UPL	818.05	791.6	-3.23	1685	8708	417%
ITC	278.95	286.15	2.58	3957	18831	376%

#### TOP 5 VOLUME LOSER FOR THE SESSION

SCRIPS	CP AS ON 18/05/2017	CP AS ON 19/05/2017	Change (%)	Vol AS ON 18/05/2017	Vol AS ON 19/05/2017	Change (%)
JPASSOCIAT	13.05	12.5	-4.21	3481	552	-84%
MRPL	136.2	133.55	-1.95	4527	842	-81%
CESC	830.35	877.8	5.71	28449	6285	-78%
CEATLTD	1755.45	1716.95	-2.19	8444	2068	-76%
HCLTECH	843.1	839.65	-0.41	7701	2000	-74%

## Technical Trend

### TOP 10 OPEN INTEREST GAINER FOR THE SESSION

SCRIPS	CP AS ON 18/05/2017	CP AS ON 19/05/2017	Change (%)	OI AS ON 18/05/2017	OI AS ON 19/05/2017	Change (%)
MUTHOOTFIN	379.55	380.05	0.13	1561500	2070000	32.56
UJJIVAN	341.8	322.15	-5.75	5484000	6747600	23.04
MGL	978.25	982.1	0.39	375600	417600	11.18
NIITTECH	515.35	501.35	-2.72	673500	726000	7.80
SINTEX	117.75	112.7	-4.29	37726875	40320375	6.87
MCX	1007.25	995.5	-1.17	1560000	1666500	6.83
HINDUNILVR	989.95	1006.95	1.72	9358200	9975600	6.60
GAIL	405.15	402.35	-0.69	13718000	14598000	6.41
INDIGO	1096.55	1069.3	-2.49	1561200	1651200	5.76
MCDOWELL-N	2049.9	1925.75	-6.06	3177250	3353750	5.56

### TOP 10 OPEN INTEREST LOSER FOR THE SESSION

SCRIPS	CP AS ON 18/05/2017	CP AS ON 19/05/2017	Change (%)	OI AS ON 18/05/2017	OI AS ON 19/05/2017	Change (%)
CESC	830.35	877.8	5.71	10895500	8923200	-18.10
ICIL	193.45	194.7	0.65	12456500	10458000	-16.04
CAPF	716.35	695.75	-2.88	5728000	4977600	-13.10
PIDILITIND	772.95	763.8	-1.18	1776000	1567000	-11.77
APOLLOTYRE	232.25	234.7	1.05	14283000	12687000	-11.17
CEATLTD	1755.45	1716.95	-2.19	2361100	2134300	-9.61
BERGEPAIN	254.25	248.7	-2.18	1205600	1093400	-9.31
SIEMENS	1383.5	1381.25	-0.16	774000	705500	-8.85
IDBI	69.9	69.15	-1.07	53544000	49112000	-8.28
CHOLAFIN	1033	1040.05	0.68	254500	234500	-7.86

## Technical Trend

### Pivot Report– Nifty 50

Symbol	PClose	Support3	Support2	Support1	Pivot	Resist1	Resist2	Resist3
ACC	1675.4	1620.9	1643.5	1659.4	<b>1682.0</b>	1697.9	1720.5	1736.4
ADANIPTS	349.5	338.5	341.9	345.7	<b>349.1</b>	352.9	356.3	360.1
AMBUJACEM	251.3	243.3	246.8	249.0	<b>252.5</b>	254.8	258.3	260.5
ASIANPAINT	1123.2	1053.7	1076.3	1099.7	<b>1122.3</b>	1145.7	1168.3	1191.7
AUROPHARMA	595.3	578.1	585.8	590.6	<b>598.3</b>	603.0	610.7	615.5
AXISBANK	501.7	486.3	490.3	496.0	<b>499.9</b>	505.6	509.6	515.3
BAJAJ-AUTO	2972.7	2866.6	2906.4	2939.5	<b>2979.3</b>	3012.4	3052.2	3085.3
BANKBARODA	188.8	175.1	180.7	184.7	<b>190.3</b>	194.3	199.9	203.9
BHARTIARTL	372.8	356.1	362.1	367.4	<b>373.5</b>	378.8	384.8	390.1
BOSCHLTD	22997.5	21215.0	22012.5	22505.0	<b>23302.5</b>	23795.0	24592.5	25085.0
BPCL	702.5	671.7	685.9	694.2	<b>708.3</b>	716.6	730.8	739.1
CIPLA	565.0	552.2	555.4	560.2	<b>563.4</b>	568.2	571.4	576.2
COALINDIA	276.3	265.6	270.7	273.5	<b>278.6</b>	281.4	286.5	289.3
DRREDDY	2656.5	2572.7	2604.9	2630.7	<b>2662.8</b>	2688.6	2720.8	2746.6
EICHERMOT	27936.1	26620.0	27188.0	27562.0	<b>28130.0</b>	28504.0	29072.0	29446.0
GAIL	401.1	385.6	390.8	395.9	<b>401.1</b>	406.3	411.5	416.6
GRASIM	1120.5	1029.6	1064.8	1092.6	<b>1127.8</b>	1155.6	1190.8	1218.6
HCLTECH	844.7	830.6	837.4	841.0	<b>847.8</b>	851.4	858.2	861.8
HDFC	1520.6	1475.3	1495.3	1508.0	<b>1528.0</b>	1540.6	1560.6	1573.3
HDFCBANK	1561.3	1523.1	1534.2	1547.7	<b>1558.8</b>	1572.4	1583.5	1597.0
HEROMOTOCO	3571.7	3396.0	3464.9	3518.3	<b>3587.1</b>	3640.5	3709.4	3762.8
HINDALCO	191.0	176.0	181.0	186.0	<b>191.0</b>	196.0	201.0	206.0
HINDUNILVR	1008.0	975.0	987.5	997.8	<b>1010.3</b>	1020.5	1033.0	1043.3
IBULHSGFIN	1040.0	973.4	998.7	1019.4	<b>1044.7</b>	1065.3	1090.6	1111.3
ICICIBANK	307.1	294.3	299.0	303.0	<b>307.7</b>	311.7	316.4	320.4
INDUSINDBK	1389.3	1346.8	1364.9	1377.1	<b>1395.2</b>	1407.3	1425.4	1437.6
INFRATEL	379.0	360.7	367.8	373.4	<b>380.4</b>	386.0	393.1	398.7
INFY	958.0	934.8	941.3	949.6	<b>956.2</b>	964.5	971.0	979.3
IOC	435.4	416.8	425.1	430.3	<b>438.6</b>	443.7	452.0	457.2
ITC	286.2	266.5	274.2	280.2	<b>287.9</b>	293.9	301.6	307.6
KOTAKBANK	937.4	921.2	928.5	932.9	<b>940.2</b>	944.7	952.0	956.4
LT	1724.6	1667.0	1682.3	1703.4	<b>1718.7</b>	1739.9	1755.2	1776.3
LUPIN	1318.2	1291.1	1298.0	1308.1	<b>1315.0</b>	1325.1	1332.0	1342.1
M&M	1333.4	1293.0	1310.7	1322.1	<b>1339.8</b>	1351.2	1368.9	1380.3
MARUTI	6790.6	6487.8	6589.7	6690.1	<b>6792.0</b>	6892.5	6994.4	7094.8
NTPC	159.1	155.3	156.7	157.9	<b>159.3</b>	160.5	161.9	163.1
ONGC	180.1	175.1	177.1	178.6	<b>180.6</b>	182.1	184.1	185.6
POWERGRID	205.8	195.0	199.6	202.7	<b>207.2</b>	210.3	214.9	218.0
RELIANCE	1318.9	1281.6	1295.8	1307.3	<b>1321.5</b>	1333.0	1347.2	1358.7
SBIN	308.0	288.3	295.1	301.6	<b>308.4</b>	314.9	321.7	328.2
SUNPHARMA	653.2	637.3	642.0	647.6	<b>652.3</b>	657.8	662.5	668.1
TATAMOTORS	443.4	426.6	430.6	437.0	<b>441.0</b>	447.3	451.3	457.7
TATAMTRDVR	266.8	255.7	258.4	262.6	<b>265.3</b>	269.5	272.2	276.4
TATAPOWER	84.2	80.6	81.8	83.0	<b>84.2</b>	85.4	86.6	87.8
TATASTEEL	489.5	465.4	472.8	481.2	<b>488.6</b>	496.9	504.3	512.7
TCS	2507.2	2427.4	2456.7	2481.9	<b>2511.2</b>	2536.5	2565.8	2591.0
TECHM	416.2	399.8	407.0	411.6	<b>418.8</b>	423.4	430.6	435.2
ULTRACEMCO	4360.6	4243.9	4289.9	4325.3	<b>4371.3</b>	4406.7	4452.7	4488.1
WIPRO	519.8	506.1	512.1	515.9	<b>521.9</b>	525.7	531.7	535.5
YESBANK	1430.1	1355.5	1380.4	1405.2	<b>1430.1</b>	1455.0	1479.9	1504.7
ZEEL	512.0	491.6	498.9	505.4	<b>512.7</b>	519.3	526.6	533.1



BP WEALTH

Technical Research Desk

Tel: +91 22 61596173

Institutional Sales Desk

Tel: +91 22 61596403/04/05

## Disclaimer Appendix

### Analyst s holding in the Stock : Nil

#### Analyst s Certification:

We analysts and the authors of this report, hereby certify that all of the views expressed in this research report accurately reflect our personal views about any and all of the subject issuer s or securities. We also certify that no part of our compensation was, is, or will be directly or indirectly related to the specific recommendation s or view s in this report. Analysts aren't registered as research analysts by FINRA and might not be an associated person of the BP Equities Pvt. Ltd. Institutional Equities.

#### General Disclaimer

This report has been prepared by the research department of BP EQUITIES Pvt. Ltd, is for information purposes only. This report is not construed as an offer to sell or the solicitation of an offer to buy or sell any security in any jurisdiction where such an offer or solicitation would be illegal.

BP EQUITIES Pvt. Ltd have exercised due diligence in checking the correctness and authenticity of the information contained herein, so far as it relates to current and historical information, but do not guarantee its accuracy or completeness. The opinions expressed are our current opinions as of the date appearing in the material and may be subject to change from time to time. Prospective investors are cautioned that any forward looking statement are not predictions and are subject to change without prior notice.

Recipients of this material should rely on their own investigations and take their own professional advice. BP EQUITIES Pvt. Ltd or any of its affiliates or employees shall not be in any way responsible for any loss or damage that may arise to any person from any inadvertent error in the information contained in this report. BP EQUITIES Pvt. Ltd. or any of its affiliates or employees do not provide, at any time, any express or implied warranty of any kind, regarding any matter pertaining to this report, including without limitation the implied warranties of merchantability, fitness for a particular purpose, and non-infringement. The recipients of this report should rely on their own investigations.

BP EQUITIES Pvt. Ltd and/or its affiliates and/or employees may have interests/ positions, financial or otherwise in the securities mentioned in this report. Opinions expressed are our current opinions as of the date appearing on this material only. While we endeavor to update on a reasonable basis the information discussed in this material, there may be regulatory, compliance, or other reasons that prevent us from doing so.

This report is not directed to or intended for display, downloading, printing, reproducing or for distribution to or use by any person in any locality, state and country or other jurisdiction where such distribution, publication or use would be contrary to the law or regulation or would subject to BP EQUITIES Pvt. Ltd or any of its affiliates to any registration or licensing requirement within such jurisdiction.

#### Corporate Office:

4th floor,  
Rustom Bldg,  
29, Veer Nariman Road, Fort,  
Mumbai-400001  
Phone- +91 22 6159 6464  
Fax-+91 22 6159 6160  
Website- [www.bpwealth.com](http://www.bpwealth.com)

#### Registered Office:

24/26, 1st Floor, Cama Building,  
Dalal street, Fort,  
Mumbai-400001  
BP Equities Pvt. Ltd.  
CIN No: U67120MH1997PTC107392