

NIFTY FUT : SUPPORT AT 8990



Source: Falcon, BP Equities Research

Nifty futures closed 1.01% lower at 9050. Index has entered the gap which was created last week in the range of 9060-8977 and now has immediate support at lower end of the gap at 8977, a break below this level will call for profit booking. Going ahead index has immediate support at 8990, a break below this level will continue the profit booking towards 8920 while resistance comes at 9110-9140.

Intraday Nifty Future Resistance—9110/9140/9190 Support—8990/8920/8860

BANK NIFTY FUT : IMMEDIATE RESISTANCE AT 21050



Source: Falcon, BP Equities Research

Bank Nifty futures closed 1.15% lower at 20849. Index had a gap down opening and continued to slide lower throughout the session. Price is now expected to test the support at 20500 which is a short term trough. Going ahead index has immediate resistance at 21050, sustenance above this level will continue its up move towards 21500 in short term while support comes at 20750-2500.

Intraday Bank Nifty Future Resistance—21500/21700/22050 Support—20750/20500/20300

Technical Trend

INTRADAY TRADER'S PICKS

Sr.No.	STOCK	CLOSE	S1	S2	S3	R1	R2	R3	RECOMMENDATION
1	APARINDS	709.30	697	688	679	727	736	745	BUY ABOVE 712
2	HCLTECH	872.75	864	854	844	886	896	906	BUY ABOVE 875
3	HINDPETRO	511	507	500	493	523	530	537	BUY ABOVE 515
4	INTELLECT	115	114	111	108	120	123	126	BUY ABOVE 117
5	PHILIPCARB	312.70	310	305	300	320	325	330	BUY ABOVE 315

Technical Trend

DERIVATIVES

INDICES SNAPSHOT

SCRIPS	CP AS ON 21/03/2017	CP AS ON 22/03/2017	Change (%)	OI AS ON 21/03/2017	OI AS ON 22/03/2017	Change (%)
BANKNIFTY	21090.75	20849.1	-1.15	2449440	2363520	-3.51
NIFTY	9143	9050.4	-1.01	32921100	33599325	2.06
NIFTYIT	10799	10797	-0.02	50550	52550	3.96

Derivative Highlights

- ⇒ Nifty Future closed with a premium of 20 points v/s a premium of 21 points in the previous session.
- ⇒ Nifty Future Open Interest increased by 2.06%. BankNifty Future Open Interest decreased by 3.51%
- ⇒ Nifty PCR - OI decreased from 1.10 to 1.07, Nifty PCR - Vol decreased from 1.13 to 0.97
- ⇒ FII Bought Rs. 356.64 crore while DII Sold Rs. 779.91 crore in the Cash Segment. FII Bought Rs. 1053.48 crore in Index Futures and Bought Rs. 460.64 crore in index options, while in Stock Future they Sold Rs. 1820.00 crore and Bought Rs 126.39 crore in stock options.
- ⇒ Among Index Option space, Highest Open Interest concentration was seen in 8800 & 8900 Strike price among the PE options. Where as among CE Options Highest Open Interest Concentration was seen in 9200 & 9300 Strike price.
- ⇒ Highest Open Interest Build Up among the PE options was seen in 8950 & 8900 Strike price. Among CE options highest build up was seen in 9300 & 9400 Strike price.

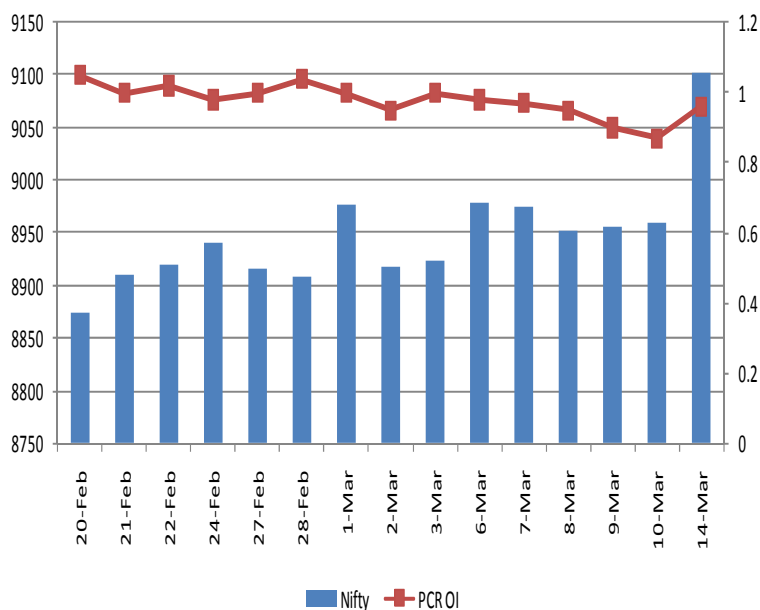
OI Concentration

PUT OPTION		CALL OPTION	
Strike Price	Open Interest	Strike Price	Open Interest
8800	5559450	9200	6353550
8900	5206500	9300	4812675
9000	4933200	9100	3686550
9100	4728600	9400	3282900
8700	3380625	9500	2612475

Highest Change in OI

PUT OPTION		CALL OPTION	
Strike Price	Change in OI	Strike Price	Change in OI
8950	237000	9300	512250
9050	130575	9400	465075
9150	73575	9150	356100
8850	46200	9200	316500
8200	4200	9250	108375

Nifty Future Price V/S PCR-OI



Technical Trend

Stock Analysis

Long Build-up	Long Unwinding	Short Build-up	Short Covering
BEML	CENTURYTEX	ACC	AMARAJABAT
CAIRN	LICHSGFIN	BHARATFORG	BPCL
GRANULES	RELIANCE	DHFL	DABUR
HINDZINC	TITAN	DISHTV	HINDPETRO
INFRATEL	VEDL	ICICIBANK	LUPIN
	ZEEL	RELINFRA	WOCKPHARMA

STATISTICS

Highest Premium

SCRIPS	Premium %	Price change %
RELCAPITAL	0.49	-1.63
NHPC	0.49	-0.33
IBULHSGFIN	0.49	-3.34
NCC	0.49	-1.90
ADANIENT	0.48	0.29

Highest Discount

SCRIPS	Premium %	Price change %
HINDZINC	-5.19	-1.33
PFC	-1.98	-1.48
ENGINERSIN	-1.39	-2.39
ORIENTBANK	-1.07	0.90
AJANTPHARM	-0.36	1.25

TOP 5 VOLUME GAINER FOR THE SESSION

SCRIPS	CP AS ON 21/03/2017	CP AS ON 22/03/2017	Change (%)	Vol AS ON 21/03/2017	Vol AS ON 22/03/2017	Change (%)
PFC	140.75	139.45	-0.92	2553	8137	219%
HINDZINC	291.25	292.25	0.34	1200	3390	183%
ICIL	189.75	196.5	3.56	1664	4606	177%
AMARAJABAT	865	870.25	0.61	1004	2344	133%
IOC	372.9	374	0.29	1122	2262	102%

TOP 5 VOLUME LOSER FOR THE SESSION

SCRIPS	CP AS ON 21/03/2017	CP AS ON 22/03/2017	Change (%)	Vol AS ON 21/03/2017	Vol AS ON 22/03/2017	Change (%)
ORIENTBANK	133.65	132.8	-0.64	5197	1032	-80%
YESBANK	1488.55	1473.6	-1.00	15453	7025	-55%
BIOCON	1148.85	1136.7	-1.06	5045	2466	-51%
DIVISLAB	636.85	627.7	-1.44	41097	21604	-47%
M&M	1295.1	1273.15	-1.69	5918	3200	-46%

Technical Trend

TOP 10 OPEN INTEREST GAINER FOR THE SESSION

SCRIPS	CP AS ON 21/03/2017	CP AS ON 22/03/2017	Change (%)	OI AS ON 21/03/2017	OI AS ON 22/03/2017	Change (%)
ICIL	189.75	196.5	3.56	5148500	7546000	46.57
MARICO	292.15	284.65	-2.57	4576000	5564000	21.59
PNB	142.65	136.75	-4.14	51100000	58303000	14.10
ARVIND	401.95	387.05	-3.71	6808000	7628000	12.04
PFC	140.75	139.45	-0.92	38730000	43056000	11.17
IGL	1032.95	1006.2	-2.59	2157100	2384800	10.56
ALBK	71.3	69.25	-2.88	16130000	17660000	9.49
DIVISLAB	636.85	627.7	-1.44	9221400	10065000	9.15
CANBK	287.95	280.4	-2.62	17341332	18908004	9.03
NIITTECH	419.35	411.25	-1.93	898500	979500	9.02

TOP 10 OPEN INTEREST LOSER FOR THE SESSION

SCRIPS	CP AS ON 21/03/2017	CP AS ON 22/03/2017	Change (%)	OI AS ON 21/03/2017	OI AS ON 22/03/2017	Change (%)
CEATLTD	1287.3	1287.5	0.02	2343600	2072700	-11.56
ORIENTBANK	133.65	132.8	-0.64	21774000	19878000	-8.71
KSCL	546.65	536.6	-1.84	3573000	3355500	-6.09
LICHSGFIN	589.75	585.65	-0.70	6790300	6426200	-5.36
TITAN	464.25	446.65	-3.79	6396000	6097500	-4.67
RELCAPITAL	601.3	593.15	-1.36	10792500	10329000	-4.29
TORNTPHARM	1439.45	1424.15	-1.06	218400	210000	-3.85
BRITANNIA	3305.45	3326.45	0.64	1270200	1224600	-3.59
DABUR	282.55	284.3	0.62	12595000	12167500	-3.39
WOCKPHARMA	727.9	731.45	0.49	3511200	3392400	-3.38

Technical Trend

Pivot Report– Nifty 50

Symbol	PClose	Support3	Support2	Support1	Pivot	Resist1	Resist2	Resist3
ACC	1386.4	1348.3	1366.1	1376.2	1394.0	1404.2	1422.0	1432.1
ADANIPTS	323.7	315.0	317.2	320.4	322.6	325.9	328.1	331.3
AMBUJACEM	233.0	226.6	229.1	231.0	233.5	235.5	238.0	239.9
ASIANPAINT	1057.9	1034.0	1041.3	1049.6	1056.9	1065.2	1072.5	1080.8
AUROPHARMA	680.6	661.7	669.6	675.1	683.0	688.5	696.4	701.9
AXISBANK	485.5	460.4	472.2	478.8	490.6	497.2	509.0	515.6
BAJAJ-AUTO	2853.8	2772.3	2808.7	2831.3	2867.7	2890.2	2926.6	2949.2
BANKBARODA	161.6	156.6	158.6	160.1	162.1	163.6	165.6	167.1
BHARTIARTL	338.2	303.8	314.8	326.5	337.5	349.2	360.2	371.9
BHEL	165.9	161.6	163.1	164.5	166.0	167.4	168.9	170.3
BOSCHLTD	22987.2	22162.8	22359.8	22673.5	22870.5	23184.2	23381.2	23694.9
BPCL	645.0	612.1	620.1	632.5	640.5	653.0	661.0	673.4
CIPLA	595.2	578.7	583.3	589.3	593.9	599.8	604.4	610.4
COALINDIA	292.2	286.2	287.9	290.0	291.7	293.8	295.5	297.6
DRREDDY	2629.7	2465.2	2510.2	2569.9	2614.9	2674.6	2719.6	2779.3
EICHERMOT	24541.0	23903.6	24166.7	24353.8	24616.9	24804.1	25067.2	25254.3
GAIL	369.0	362.5	364.9	367.0	369.4	371.4	373.8	375.9
GRASIM	1080.1	1050.8	1061.9	1071.0	1082.2	1091.3	1102.4	1111.5
HCLTECH	872.8	829.7	839.1	855.9	865.3	882.1	891.5	908.3
HDFC	1442.3	1412.0	1423.0	1432.7	1443.7	1453.4	1464.4	1474.1
HDFCBANK	1430.9	1414.3	1420.0	1425.5	1431.2	1436.7	1442.4	1447.9
HEROMOTOCO	3314.6	3239.7	3265.9	3290.2	3316.4	3340.7	3366.9	3391.2
HINDALCO	193.4	186.9	189.5	191.4	194.0	195.9	198.5	200.4
HINDUNILVR	905.0	882.7	888.4	896.7	902.3	910.6	916.3	924.6
ICICIBANK	265.0	259.2	261.8	263.4	266.1	267.7	270.3	271.9
IDEA	91.3	85.0	87.3	89.3	91.5	93.5	95.8	97.8
INDUSINDBK	1376.6	1354.3	1361.9	1369.3	1376.9	1384.2	1391.8	1399.2
INFRATEL	313.0	303.4	306.9	309.9	313.5	316.5	320.0	323.0
INFY	1027.7	999.2	1009.8	1018.8	1029.4	1038.3	1048.9	1057.9
ITC	279.9	267.1	272.9	276.4	282.1	285.6	291.4	294.9
KOTAKBANK	862.2	835.8	842.1	852.2	858.5	868.6	874.9	885.0
LT	1529.9	1493.2	1509.3	1519.6	1535.7	1545.9	1562.0	1572.3
LUPIN	1468.2	1417.1	1430.1	1449.1	1462.1	1481.1	1494.1	1513.1
M&M	1270.9	1226.0	1241.8	1256.3	1272.2	1286.7	1302.5	1317.0
MARUTI	6005.8	5895.0	5936.2	5971.0	6012.2	6047.0	6088.2	6123.0
NTPC	160.8	158.3	159.3	160.0	161.0	161.8	162.8	163.5
ONGC	192.5	188.1	189.6	191.0	192.5	193.9	195.4	196.8
POWERGRID	192.1	186.4	188.9	190.5	193.1	194.7	197.2	198.8
RELIANCE	1259.7	1229.5	1238.0	1248.9	1257.4	1268.2	1276.7	1287.6
SBIN	267.5	261.7	264.2	265.9	268.4	270.1	272.6	274.3
SUNPHARMA	701.5	681.7	686.3	693.9	698.4	706.0	710.6	718.2
TATAMOTORS	459.9	444.2	451.3	455.6	462.8	467.1	474.2	478.5
TATAMTRDVR	277.5	269.3	273.2	275.3	279.2	281.3	285.2	287.3
TATAPOWER	87.0	85.1	85.7	86.3	86.9	87.5	88.1	88.7
TATASTEEL	488.1	477.7	482.0	485.1	489.4	492.5	496.8	499.9
TCS	2479.0	2441.2	2455.6	2467.3	2481.6	2493.3	2507.7	2519.4
TECHM	475.4	465.7	469.3	472.3	475.9	479.0	482.6	485.6
ULTRACEMCO	3970.3	3837.4	3874.8	3922.5	3959.9	4007.7	4045.1	4092.8
WIPRO	500.6	482.5	487.3	493.9	498.7	505.3	510.1	516.7
YESBANK	1470.9	1444.8	1452.5	1461.7	1469.3	1478.5	1486.2	1495.4
ZEEL	520.8	507.1	512.2	516.5	521.6	525.9	531.0	535.3



BP WEALTH

Technical Research Desk

Tel: +91 22 61596173

Institutional Sales Desk

Tel: +91 22 61596403/04/05

Disclaimer Appendix

Analyst s holding in the Stock : Nil

Analyst s Certification:

We analysts and the authors of this report, hereby certify that all of the views expressed in this research report accurately reflect our personal views about any and all of the subject issuer s or securities. We also certify that no part of our compensation was, is, or will be directly or indirectly related to the specific recommendation s or view s in this report. Analysts aren't registered as research analysts by FINRA and might not be an associated person of the BP Equities Pvt. Ltd. Institutional Equities.

General Disclaimer

This report has been prepared by the research department of BP EQUITIES Pvt. Ltd, is for information purposes only. This report is not construed as an offer to sell or the solicitation of an offer to buy or sell any security in any jurisdiction where such an offer or solicitation would be illegal.

BP EQUITIES Pvt. Ltd have exercised due diligence in checking the correctness and authenticity of the information contained herein, so far as it relates to current and historical information, but do not guarantee its accuracy or completeness. The opinions expressed are our current opinions as of the date appearing in the material and may be subject to change from time to time. Prospective investors are cautioned that any forward looking statement are not predictions and are subject to change without prior notice.

Recipients of this material should rely on their own investigations and take their own professional advice. BP EQUITIES Pvt. Ltd or any of its affiliates or employees shall not be in any way responsible for any loss or damage that may arise to any person from any inadvertent error in the information contained in this report. BP EQUITIES Pvt. Ltd. or any of its affiliates or employees do not provide, at any time, any express or implied warranty of any kind, regarding any matter pertaining to this report, including without limitation the implied warranties of merchantability, fitness for a particular purpose, and non-infringement. The recipients of this report should rely on their own investigations.

BP EQUITIES Pvt. Ltd and/or its affiliates and/or employees may have interests/ positions, financial or otherwise in the securities mentioned in this report. Opinions expressed are our current opinions as of the date appearing on this material only. While we endeavor to update on a reasonable basis the information discussed in this material, there may be regulatory, compliance, or other reasons that prevent us from doing so.

This report is not directed to or intended for display, downloading, printing, reproducing or for distribution to or use by any person in any locality, state and country or other jurisdiction where such distribution, publication or use would be contrary to the law or regulation or would subject to BP EQUITIES Pvt. Ltd or any of its affiliates to any registration or licensing requirement within such jurisdiction.

Corporate Office:

4th floor,
Rustom Bldg,
29, Veer Nariman Road, Fort,
Mumbai-400001
Phone- +91 22 6159 6464
Fax-+91 22 6159 6160
Website- www.bpwealth.com

Registered Office:

24/26, 1st Floor, Cama Building,
Dalal street, Fort,
Mumbai-400001
BP Equities Pvt. Ltd.
CIN No: U67120MH1997PTC107392