

## NIFTY FUT : SUPPORT AT 9060

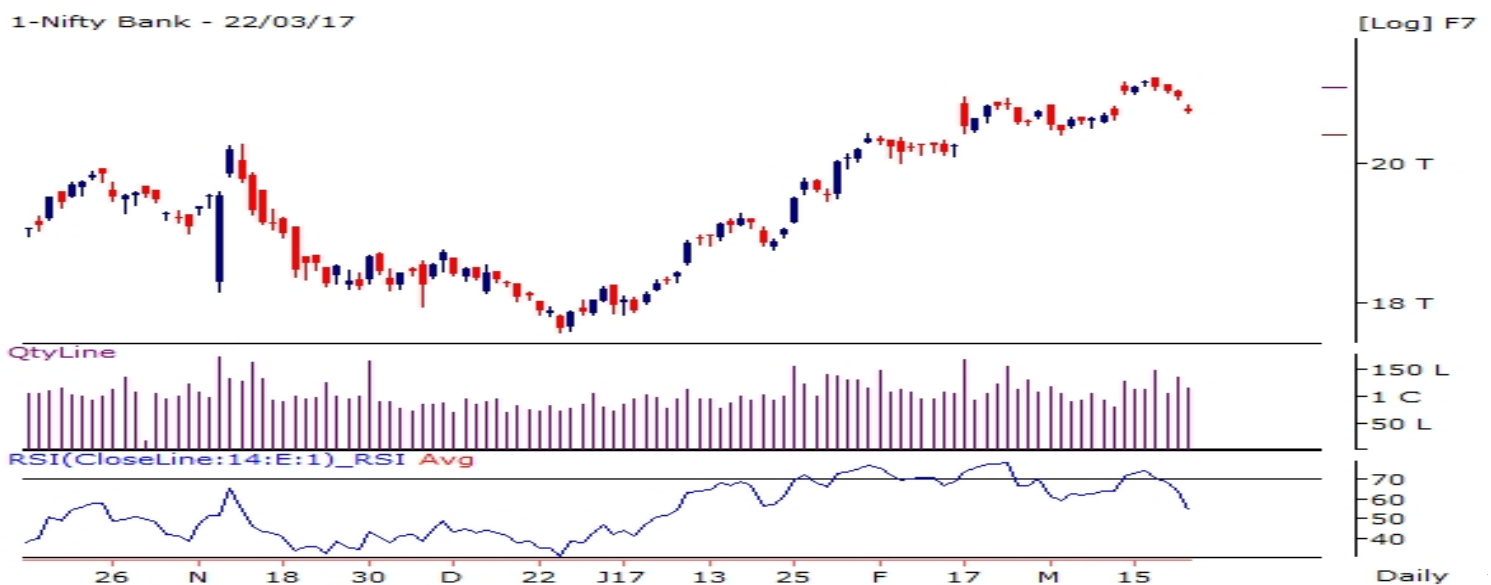


Source: Falcon, BP Equities Research

Nifty futures closed 0.63% higher at 9108. Index had a positive start and has managed to sustain the upside throughout the session. Price has entered the gap which was created last week in the range of 9060-8977 and now has immediate support at lower end of the gap at 8977, a break below this level will call for profit booking. Going ahead index has immediate support at 9060, a break below this level will continue the profit booking towards 8920 while resistance comes at 9140-9190.

Intraday Nifty Future                      Resistance—9140/9190/9240                      Support—9060/8990/8920

## BANK NIFTY FUT : IMMEDIATE RESISTANCE AT 21050



Source: Falcon, BP Equities Research

Bank Nifty futures closed 0.50% higher at 20953. Index had a positive start to the session but failed to move beyond the range formed by its previous day's candlestick, thus forming an inside day candlestick. Price has crucial support at 20500 which is a short term trough. Going ahead index has immediate resistance at 21050, sustenance above this level will continue its up move towards 21500 in short term while support comes at 20750-2500.

Intraday Bank Nifty Future                      Resistance—21050/21500/21700                      Support—20750/20500/20300

## Technical Trend

### INTRADAY TRADER'S PICKS

Sr.No.	STOCK	CLOSE	S1	S2	S3	R1	R2	R3	RECOMMENDATION
1	GRANULES	136.95	134	131	128	142	145	148	<b>BUY ABOVE 138</b>
2	JSWENERGY	61.30	60.5	59.4	58.4	62.9	64	65	<b>BUY ABOVE 61.70</b>
3	KWALITY	158.60	157	154	151	163	166	169	<b>BUY ABOVE 160</b>
4	LUPIN	1490	1477	1462	1447	1517	1532	1547	<b>BUY ABOVE 1497</b>
5	RCF	69.70	68	66.5	65	72.4	73.9	75.4	<b>BUY ABOVE 70.20</b>

## Technical Trend

### DERIVATIVES

#### INDICES SNAPSHOT

SCRIPS	CP AS ON 22/03/2017	CP AS ON 23/03/2017	Change (%)	OI AS ON 22/03/2017	OI AS ON 23/03/2017	Change (%)
BANKNIFTY	20849.1	20952.75	0.50	2363520	2372040	0.36
NIFTY	9050.4	9107.65	0.63	33599325	33962625	1.08
NIFTYIT	10797	10862	0.60	52550	52400	-0.29

#### Derivative Highlights

- ⇒ Nifty Future closed with a premium of 22 points v/s a premium of 20 points in the previous session.
- ⇒ Nifty Future Open Interest increased by 1.08%. BankNifty Future Open Interest increased by 0.36%
- ⇒ Nifty PCR - OI decreased from 1.10 to 1.07, Nifty PCR - Vol decreased from 1.13 to 0.97
- ⇒ FII Bought Rs. 1094.44 crore while DII Sold Rs. 590.78 crore in the Cash Segment. FII Bought Rs. 1053.48 crore in Index Futures and Bought Rs. 460.64 crore in index options, while in Stock Future they Sold Rs. 1820.00 crore and Bought Rs 126.39 crore in stock options.
- ⇒ Among Index Option space, Highest Open Interest concentration was seen in 8800 & 8900 Strike price among the PE options. Where as among CE Options Highest Open Interest Concentration was seen in 9200 & 9300 Strike price.
- ⇒ Highest Open Interest Build Up among the PE options was seen in 8950 & 8900 Strike price. Among CE options highest build up was seen in 9300 & 9400 Strike price.

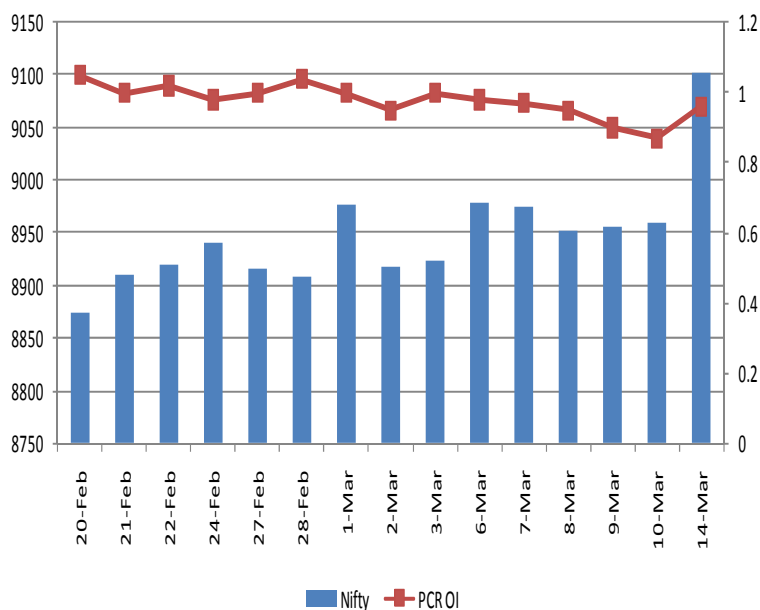
#### OI Concentration

PUT OPTION		CALL OPTION	
Strike Price	Open Interest	Strike Price	Open Interest
8800	5559450	9200	6353550
8900	5206500	9300	4812675
9000	4933200	9100	3686550
9100	4728600	9400	3282900
8700	3380625	9500	2612475

#### Highest Change in OI

PUT OPTION		CALL OPTION	
Strike Price	Change in OI	Strike Price	Change in OI
8950	237000	9300	512250
9050	130575	9400	465075
9150	73575	9150	356100
8850	46200	9200	316500
8200	4200	9250	108375

#### Nifty Future Price V/S PCR-OI



## Technical Trend

### Stock Analysis

Long Build-up	Long Unwinding	Short Build-up	Short Covering
ARVIND	-	EICHERMOT	BPCL
BHARATFIN		IGL	CENTURYTEX
CEATLTD		IOC	GAIL
IDFC		TCS	HINDZINC
IRB			MOTHERSUMI
RELCAPITAL			UPL

### STATISTICS

#### Highest Premium

SCRIPS	Premium %	Price change %
JPASSOCIAT	0.75	1.14
GMRINFRA	0.61	1.87
KSCL	0.55	2.52
IDEA	0.49	0.33
JISLJALEQS	0.48	-0.05

#### Highest Discount

SCRIPS	Premium %	Price change %
HINDZINC	-8.34	2.47
PFC	-3.98	-0.63
ORIENTBANK	-1.76	1.45
COALINDIA	-1.12	1.28
HINDPETRO	-0.98	2.11

#### TOP 5 VOLUME GAINER FOR THE SESSION

SCRIPS	CP AS ON 22/03/2017	CP AS ON 23/03/2017	Change (%)	OI AS ON 22/03/2017	OI AS ON 23/03/2017	Change (%)
BHARATFIN	809.7	845.5	4.42	2804	19324	589%
RELCAPITAL	593.15	613.25	3.39	3123	20336	551%
YESBANK	1473.6	1520	3.15	7025	23949	241%
TATAGLOBAL	143.25	151.85	6.00	1749	5905	238%
CEATLTD	1287.5	1324.6	2.88	2256	6937	207%

#### TOP 5 VOLUME LOSER FOR THE SESSION

SCRIPS	CP AS ON 22/03/2017	CP AS ON 23/03/2017	Change (%)	OI AS ON 22/03/2017	OI AS ON 23/03/2017	Change (%)
PFC	139.45	137.35	-1.51	8137	2508	-69%
ICIL	196.5	197.2	0.36	4606	1762	-62%
AXISBANK	486.05	489.75	0.76	24779	9838	-60%
DRREDDY	2635.1	2636.05	0.04	9507	4053	-57%
IDEA	91.75	92.05	0.33	13549	5803	-57%

## Technical Trend

### TOP 10 OPEN INTEREST GAINER FOR THE SESSION

SCRIPS	CP AS ON 22/03/2017	CP AS ON 23/03/2017	Change (%)	OI AS ON 22/03/2017	OI AS ON 23/03/2017	Change (%)
BHARATFIN	809.7	845.5	4.42	15622000	20065000	28.44
PCJEWELLER	418.2	406.45	-2.81	1056000	1230000	16.48
ICIL	196.5	197.2	0.36	7546000	8718500	15.54
RELCAPITAL	593.15	613.25	3.39	10329000	11881500	15.03
CEATLTD	1287.5	1324.6	2.88	2072700	2342200	13.00
YESBANK	1473.6	1520	3.15	8437800	9286900	10.06
TVSMOTOR	433.2	429.35	-0.89	5476000	5936000	8.40
IFCI	29.6	30.3	2.36	76318000	82368000	7.93
IDFC	53.3	53.5	0.38	97112400	104266800	7.37
IGL	1006.2	1004	-0.22	2384800	2559700	7.33

### TOP 10 OPEN INTEREST LOSER FOR THE SESSION

SCRIPS	CP AS ON 22/03/2017	CP AS ON 23/03/2017	Change (%)	OI AS ON 22/03/2017	OI AS ON 23/03/2017	Change (%)
HINDZINC	292.25	292.9	0.22	15363200	13705600	-10.79
HDIL	76.9	77.9	1.30	28960000	26608000	-8.12
MARICO	284.65	292.3	2.69	5564000	5135000	-7.71
CAIRN	292.9	300	2.42	31997000	29764000	-6.98
JETAIRWAYS	461.85	482.3	4.43	5560000	5235000	-5.85
ACC	1388.8	1402.15	0.96	2168800	2057200	-5.15
BPCL	645.3	650.4	0.79	14980800	14232000	-5.00
NTPC	160.85	163.35	1.55	28612000	27308000	-4.56
GRANULES	136.35	137.25	0.66	15690000	14975000	-4.56
OIL	329.5	332.8	1.00	2889150	2757722	-4.55

## Technical Trend

### Pivot Report– Nifty 50

Symbol	PClose	Support3	Support2	Support1	Pivot	Resist1	Resist2	Resist3
ACC	1400.8	1361.6	1371.0	1385.9	<b>1395.3</b>	1410.2	1419.6	1434.5
ADANIPTS	325.6	317.9	320.0	322.8	<b>324.9</b>	327.7	329.8	332.6
AMBUJACEM	232.7	226.7	228.8	230.7	<b>232.8</b>	234.7	236.8	238.7
ASIANPAINT	1061.6	1037.7	1045.9	1053.7	<b>1061.9</b>	1069.7	1077.9	1085.7
AUROPHARMA	686.8	670.5	675.7	681.3	<b>686.5</b>	692.1	697.3	702.9
AXISBANK	488.3	474.5	478.8	483.5	<b>487.8</b>	492.5	496.8	501.5
BAJAJ-AUTO	2866.0	2824.4	2836.3	2851.1	<b>2863.1</b>	2877.9	2889.8	2904.6
BANKBARODA	162.2	157.4	158.8	160.5	<b>162.0</b>	163.7	165.1	166.8
BHARTIARTL	338.5	329.3	332.4	335.5	<b>338.6</b>	341.6	344.7	347.8
BHEL	168.0	161.5	163.2	165.6	<b>167.2</b>	169.6	171.3	173.7
BOSCHLTD	22982.2	22468.5	22609.3	22795.7	<b>22936.5</b>	23122.9	23263.7	23450.1
BPCL	655.1	636.9	642.5	648.8	<b>654.4</b>	660.7	666.3	672.6
CIPLA	596.3	570.2	576.2	586.2	<b>592.2</b>	602.2	608.2	618.2
COALINDIA	295.9	288.5	290.4	293.2	<b>295.1</b>	297.8	299.7	302.5
DRREDDY	2631.2	2590.5	2605.3	2618.2	<b>2633.0</b>	2645.9	2660.7	2673.6
EICHERMOT	24373.6	23511.0	23790.5	24082.0	<b>24361.5</b>	24653.0	24932.5	25224.0
GAIL	376.9	363.1	366.2	371.6	<b>374.7</b>	380.1	383.2	388.6
GRASIM	1091.9	1063.8	1071.0	1081.4	<b>1088.6</b>	1099.1	1106.3	1116.7
HCLTECH	876.7	859.4	864.2	870.4	<b>875.2</b>	881.5	886.3	892.5
HDFC	1456.7	1423.0	1431.4	1444.0	<b>1452.5</b>	1465.1	1473.5	1486.1
HDFCBANK	1430.9	1412.1	1417.5	1424.2	<b>1429.6</b>	1436.3	1441.7	1448.4
HEROMOTOCO	3367.4	3273.0	3296.5	3332.0	<b>3355.5</b>	3390.9	3414.4	3449.9
HINDALCO	193.7	190.0	191.4	192.5	<b>193.9</b>	195.0	196.4	197.5
HINDUNILVR	902.0	886.3	892.2	897.1	<b>903.1</b>	908.0	913.9	918.8
ICICIBANK	267.0	261.6	263.2	265.1	<b>266.7</b>	268.5	270.1	272.0
IDEA	91.6	89.4	90.3	90.9	<b>91.8</b>	92.4	93.3	93.9
INDUSINDBK	1383.9	1356.1	1364.1	1374.0	<b>1381.9</b>	1391.8	1399.8	1409.7
INFRATEL	313.6	307.2	309.9	311.7	<b>314.4</b>	316.2	318.9	320.7
INFY	1040.5	1014.0	1020.3	1030.4	<b>1036.7</b>	1046.8	1053.1	1063.2
ITC	277.6	266.9	271.0	274.3	<b>278.4</b>	281.7	285.8	289.1
KOTAKBANK	868.2	850.9	856.5	862.3	<b>867.9</b>	873.8	879.4	885.2
LT	1543.9	1483.2	1501.1	1522.5	<b>1540.5</b>	1561.9	1579.8	1601.2
LUPIN	1490.3	1444.0	1455.3	1472.8	<b>1484.1</b>	1501.6	1512.9	1530.4
M&M	1274.6	1254.0	1260.7	1267.6	<b>1274.3</b>	1281.2	1287.9	1294.8
MARUTI	6034.8	5957.7	5986.8	6010.8	<b>6039.9</b>	6063.9	6093.0	6117.0
NTPC	164.4	158.4	159.7	162.1	<b>163.4</b>	165.8	167.1	169.5
ONGC	193.6	191.0	191.9	192.7	<b>193.6</b>	194.5	195.4	196.2
POWERGRID	193.1	190.0	190.8	191.9	<b>192.7</b>	193.8	194.6	195.7
RELIANCE	1273.3	1242.1	1250.1	1261.7	<b>1269.6</b>	1281.2	1289.2	1300.8
SBIN	268.5	264.3	265.5	267.0	<b>268.2</b>	269.7	270.9	272.4
SUNPHARMA	703.2	694.2	696.7	699.9	<b>702.5</b>	705.7	708.2	711.4
TATAMOTORS	472.9	448.1	454.7	463.8	<b>470.4</b>	479.5	486.1	495.2
TATAMTRDVR	281.6	271.5	274.8	278.2	<b>281.5</b>	284.9	288.2	291.6
TATAPOWER	87.1	85.6	86.2	86.6	<b>87.2</b>	87.6	88.2	88.6
TATASTEEL	495.5	480.7	484.1	489.8	<b>493.2</b>	498.9	502.3	508.0
TCS	2460.4	2405.5	2426.4	2443.4	<b>2464.2</b>	2481.2	2502.1	2519.1
TECHM	482.2	469.4	472.5	477.3	<b>480.4</b>	485.2	488.3	493.1
ULTRACEMCO	3974.3	3914.2	3936.9	3955.6	<b>3978.3</b>	3997.0	4019.7	4038.4
WIPRO	510.0	492.2	496.5	503.3	<b>507.6</b>	514.4	518.7	525.5
YESBANK	1518.6	1420.4	1441.2	1479.9	<b>1500.7</b>	1539.4	1560.2	1598.9
ZEEL	523.6	513.2	515.8	519.7	<b>522.4</b>	526.3	528.9	532.8



BP WEALTH

Technical Research Desk

Tel: +91 22 61596173

Institutional Sales Desk

Tel: +91 22 61596403/04/05

## Disclaimer Appendix

### Analyst s holding in the Stock : Nil

#### Analyst s Certification:

We analysts and the authors of this report, hereby certify that all of the views expressed in this research report accurately reflect our personal views about any and all of the subject issuer s or securities. We also certify that no part of our compensation was, is, or will be directly or indirectly related to the specific recommendation s or view s in this report. Analysts aren't registered as research analysts by FINRA and might not be an associated person of the BP Equities Pvt. Ltd. Institutional Equities.

#### General Disclaimer

This report has been prepared by the research department of BP EQUITIES Pvt. Ltd, is for information purposes only. This report is not construed as an offer to sell or the solicitation of an offer to buy or sell any security in any jurisdiction where such an offer or solicitation would be illegal.

BP EQUITIES Pvt. Ltd have exercised due diligence in checking the correctness and authenticity of the information contained herein, so far as it relates to current and historical information, but do not guarantee its accuracy or completeness. The opinions expressed are our current opinions as of the date appearing in the material and may be subject to change from time to time. Prospective investors are cautioned that any forward looking statement are not predictions and are subject to change without prior notice.

Recipients of this material should rely on their own investigations and take their own professional advice. BP EQUITIES Pvt. Ltd or any of its affiliates or employees shall not be in any way responsible for any loss or damage that may arise to any person from any inadvertent error in the information contained in this report. BP EQUITIES Pvt. Ltd. or any of its affiliates or employees do not provide, at any time, any express or implied warranty of any kind, regarding any matter pertaining to this report, including without limitation the implied warranties of merchantability, fitness for a particular purpose, and non-infringement. The recipients of this report should rely on their own investigations.

BP EQUITIES Pvt. Ltd and/or its affiliates and/or employees may have interests/ positions, financial or otherwise in the securities mentioned in this report. Opinions expressed are our current opinions as of the date appearing on this material only. While we endeavor to update on a reasonable basis the information discussed in this material, there may be regulatory, compliance, or other reasons that prevent us from doing so.

This report is not directed to or intended for display, downloading, printing, reproducing or for distribution to or use by any person in any locality, state and country or other jurisdiction where such distribution, publication or use would be contrary to the law or regulation or would subject to BP EQUITIES Pvt. Ltd or any of its affiliates to any registration or licensing requirement within such jurisdiction.

#### Corporate Office:

4th floor,  
Rustom Bldg,  
29, Veer Nariman Road, Fort,  
Mumbai-400001  
Phone- +91 22 6159 6464  
Fax-+91 22 6159 6160  
Website- [www.bpwealth.com](http://www.bpwealth.com)

#### Registered Office:

24/26, 1st Floor, Cama Building,  
Dalal street, Fort,  
Mumbai-400001  
BP Equities Pvt. Ltd.  
CIN No: U67120MH1997PTC107392