

NIFTY FUT : IMMEDIATE SUPPORT AT 9550



Nifty futures closed 0.31% higher at 9606. Index continued its up move for third consecutive day which suggests strong buying strength. Earlier index has failed to sustain below its immediate support of 9370 and saw a sharp recovery and covered the losses accrued in last five sessions. Going ahead index has immediate support at 9520, till it maintains above this level it is expected to continue its upmove towards 9630-9690 while support past 9520 comes at 9450.

Intraday Nifty Future Resistance—9630/9650/9690 Support—9550/9520/9450

BANK NIFTY FUT : RESISTANCE AT 23400



Bank Nifty futures closed 0.52% lower at 23136. Index had a lack lustered session of trade. Earlier index has failed to sustain below its immediate support of 22500 and saw a sharp recovery and covered the losses accrued in last five sessions. Going ahead till index maintains above 23100 it is expected to continue its up move towards 23650-23800 while support past 23100 comes at 22900-22750.

Intraday Bank Nifty Future Resistance—23400/23650/23800 Support—22600/22450/22200

Technical Trend

INTRADAY TRADER'S PICKS

Sr.No.	STOCK	CLOSE	S1	S2	S3	R1	R2	R3	RECOMMENDATION
1	CIPLA	505.35	501	495	489	515	521	527	BUY ABOVE 508
2	DABUR	278.60	275	271	268	285	289	292	BUY ABOVE 280
3	DISHMAN	301.20	299	295	291	309	313	317	BUY ABOVE 304
4	HINDALCO	201.25	198	195	192	207	210	213	BUY ABOVE 203
5	RELIANCE	1357	1345	1325	1305	1385	1405	1425	BUY ABOVE 1365

Technical Trend

DERIVATIVES

INDICES SNAPSHOT

SCRIPS	CP AS ON 26/05/2017	CP AS ON 29/05/2017	Change (%)	OI AS ON 26/05/2017	OI AS ON 29/05/2017	Change (%)
BANKNIFTY	23256.95	23135.95	-0.52	3212360	3175200	-1.16
NIFTY	9575.8	9605.7	0.31	19953150	21582300	8.16
NIFTYIT	10670	10551	-1.12	25700	24950	-2.92

Derivative Highlights

- ⇒ Nifty Future closed with a premium of 1 point.
- ⇒ Nifty Future Open Interest increased by 8.16%. BankNifty Future Open Interest decreased by 1.16%.
- ⇒ Nifty PCR - OI was observed to be 1.13, Nifty PCR - Vol was observed to be 0.92.
- ⇒ FII Sold 709.97 crore while DII Bought Rs. 290.53 crore in the Cash Segment. FII Bought Rs. 1208.32 crore in Index Futures and Bought Rs. 1032.24 crore in index options, while in Future they Sold Rs. 298.76 crore and Bought Rs 41.95 crore in stock options.
- ⇒ Among Index Option space, Highest Open Interest concentration was seen in 9400 & 9500 Strike price among the PE options. Where as among CE Options Highest Open Interest Concentration was seen in 9700 & 9600 Strike price.
- ⇒ Highest Open Interest Build Up among the PE options was seen in 9500 & 9600 Strike price. Among CE options highest build up was seen in 9700 & 9800 Strike price.

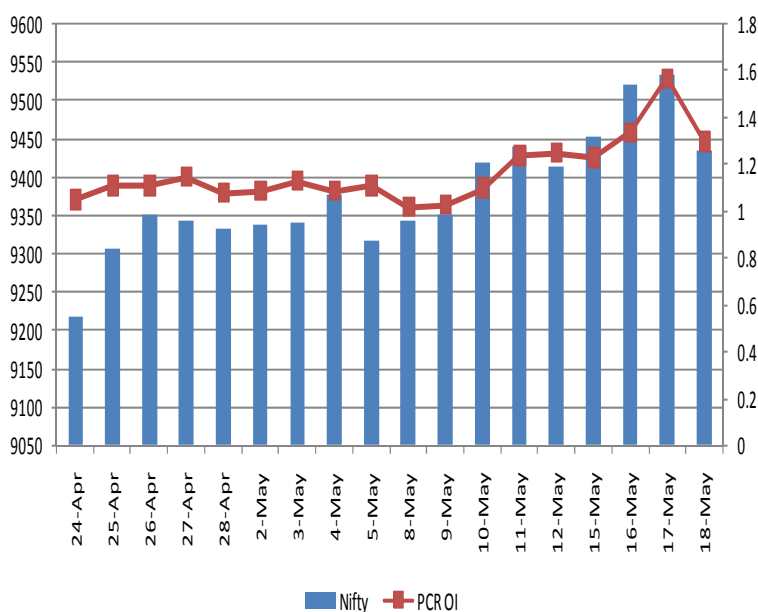
OI Concentration

PUT OPTION		CALL OPTION	
Strike Price	Open Interest	Strike Price	Open Interest
9400	4839300	9700	3909900
9500	4295475	9600	3411825
9300	4072575	9800	3261825
9200	3419125	9500	3046500
9000	3123075	10000	1826000

Highest Change in OI

PUT OPTION		CALL OPTION	
Strike Price	Change in OI	Strike Price	Change in OI
9500	904875	9700	476100
9600	406950	9800	373200
9400	241500	10000	274800
10000	143850	9900	180375
9700	123300	10100	146400

Nifty Future Price V/S PCR-OI



Technical Trend

Stock Analysis

Long Build-up	Long Unwinding	Short Build-up	Short Covering
COLPAL	AJANTPHARM	INDIACEM	CHOLAFIN
DIVISLAB	CENTURYTEX	JUBLFOOD	HDFCBANK
ESCORTS	EQUITAS	PFC	INDUSINDBK
IBULHSGFIN	IFCI	SBIN	MGL
MARUTI	NBCC	TV18BRDCST	POWERGRID
PCJEWELLER	TORNTPOWER	UNIONBANK	UPL

STATISTICS

Highest Premium

SCRIPS	Premium %	Price change %
SINTEX	0.86	-4.14
BALRAMCHIN	0.69	-5.04
GMRINFRA	0.68	-7.21
SUNTV	0.67	-3.39
DCBBANK	0.66	-2.22

Highest Discount

SCRIPS	Premium %	Price change %
PCJEWELLER	0.03	13.76
TATACOMM	0.27	7.56
ESCORTS	0.61	4.44
DIVISLAB	0.50	4.44
M&MFIN	0.38	3.96

TOP 5 VOLUME GAINER FOR THE SESSION

SCRIPS	CP AS ON 26/05/2017	CP AS ON 29/05/2017	Change (%)	Vol AS ON 26/05/2017	Vol AS ON 29/05/2017	Change (%)
PCJEWELLER	452.55	513.05	13.37	656	7978	1116%
NTPC	157	157.1	0.06	811	4152	412%
ESCORTS	645.75	675.35	4.58	2471	11082	348%
TATACOMM	657.8	707.3	7.53	1537	6654	333%
TECHM	431.45	380.4	-11.83	4366	17675	305%

TOP 5 VOLUME LOSER FOR THE SESSION

SCRIPS	CP AS ON 26/05/2017	CP AS ON 29/05/2017	Change (%)	Vol AS ON 26/05/2017	Vol AS ON 29/05/2017	Change (%)
KAJARIACER	682.25	686.55	0.63	544	82	-85%
INFIBEAM	944.75	946.8	0.22	1615	464	-71%
HINDPETRO	568.15	548.75	-3.41	30859	9853	-68%
RAYMOND	725.2	698.85	-3.63	2968	972	-67%
TATACHEM	613.7	608.9	-0.78	3570	1203	-66%

Technical Trend

TOP 10 OPEN INTEREST GAINER FOR THE SESSION

SCRIPS	CP AS ON 26/05/2017	CP AS ON 29/05/2017	Change (%)	OI AS ON 26/05/2017	OI AS ON 29/05/2017	Change (%)
NATIONALUM	68.75	68.95	0.29	2384000	4064000	70.47
ESCORTS	645.75	675.35	4.58	1428900	1888700	32.18
SUNPHARMA	571.5	505.55	-11.54	27809200	36563600	31.48
RAMCOCEM	685.8	684.2	-0.23	64000	80800	26.25
JUBLFOOD	989.3	938.75	-5.11	1755000	2152500	22.65
DLF	195.4	176.95	-9.44	32635000	39755000	21.82
TORNTPHARM	1211.55	1218.55	0.58	198000	239600	21.01
TECHM	431.45	380.4	-11.83	11804100	14198800	20.29
SINTEX	30.45	29.2	-4.11	12126750	14556375	20.04
PCJEWELLER	452.55	513.05	13.37	1110000	1327500	19.59

TOP 10 OPEN INTEREST LOSER FOR THE SESSION

SCRIPS	CP AS ON 26/05/2017	CP AS ON 29/05/2017	Change (%)	OI AS ON 26/05/2017	OI AS ON 29/05/2017	Change (%)
IGL	1023.4	1023.35	0.00	1741300	1533400	-11.94
APOLLOTYRE	230.75	223.3	-3.23	10638000	9504000	-10.66
AJANTPHARM	1603	1530.6	-4.52	424800	383600	-9.70
MGL	963.8	973.6	1.02	366000	342600	-6.39
L&TFH	131.6	127.55	-3.08	17923500	17014500	-5.07
CADILAHC	445.15	457.95	2.88	2592000	2460800	-5.06
RELIANCE	1338.65	1353.5	1.11	17076000	16267000	-4.74
PAGEIND	14478.05	14341.75	-0.94	23700	22650	-4.43
LICHSGFIN	706.85	705	-0.26	4997300	4779500	-4.36
AMARAJABAT	863.9	854.9	-1.04	1144800	1096200	-4.25

Technical Trend

Pivot Report– Nifty 50

Symbol	PClose	Support3	Support2	Support1	Pivot	Resist1	Resist2	Resist3
ACC	1624.4	1573.4	1595.4	1609.9	1632.0	1646.5	1668.5	1683.0
ADANIPTS	327.8	295.9	310.5	319.2	333.8	342.4	357.0	365.7
AMBUJACEM	240.3	233.7	236.4	238.3	241.0	243.0	245.7	247.6
ASIANPAINT	1146.6	1106.0	1115.5	1131.0	1140.5	1156.0	1165.5	1181.0
AUROPHARMA	512.4	454.0	478.5	495.5	520.0	536.9	561.4	578.4
AXISBANK	507.3	488.5	495.4	501.3	508.2	514.1	521.0	526.9
BAJAJ-AUTO	2838.0	2737.0	2762.4	2800.2	2825.5	2863.3	2888.7	2926.5
BANKBARODA	173.7	162.3	167.7	170.7	176.0	179.0	184.4	187.4
BHARTIARTL	373.1	356.7	362.3	367.7	373.3	378.7	384.3	389.7
BOSCHLTD	23575.2	22993.4	23199.7	23387.4	23593.7	23781.4	23987.7	24175.4
BPCL	754.9	722.6	734.8	744.8	757.0	767.1	779.3	789.3
CIPLA	505.4	475.1	482.0	493.7	500.6	512.3	519.2	530.9
COALINDIA	267.3	259.8	262.8	265.0	268.0	270.3	273.3	275.5
DRREDDY	2425.9	2297.8	2339.1	2382.5	2423.7	2467.1	2508.4	2551.8
EICHERMOT	28172.1	27501.4	27764.7	27968.4	28231.7	28435.4	28698.7	28902.4
GAIL	401.2	385.0	390.1	395.6	400.7	406.2	411.3	416.8
HCLTECH	864.5	832.7	842.1	853.3	862.6	873.8	883.2	894.4
HDFC	1598.9	1507.6	1526.8	1562.8	1582.0	1618.1	1637.3	1673.3
HDFCBANK	1631.9	1586.7	1602.2	1617.0	1632.5	1647.4	1662.9	1677.7
HEROMOTOCO	3665.8	3523.5	3557.0	3611.4	3644.9	3699.3	3732.8	3787.2
HINDALCO	201.3	189.7	193.5	197.4	201.1	205.0	208.8	212.7
HINDUNILVR	1072.3	1010.1	1024.4	1048.3	1062.7	1086.6	1100.9	1124.8
IBULHSGFIN	1107.0	1065.5	1076.3	1091.6	1102.4	1117.7	1128.5	1143.8
ICICIBANK	314.9	305.7	309.8	312.3	316.4	318.9	323.0	325.5
INDUSINDBK	1490.7	1443.3	1458.4	1474.5	1489.6	1505.8	1520.9	1537.0
INFRATEL	379.4	357.2	362.5	370.9	376.2	384.6	389.9	398.3
INFY	985.2	954.0	964.9	975.0	985.9	996.0	1006.9	1017.0
IOC	419.3	395.6	405.8	412.5	422.7	429.4	439.6	446.3
ITC	315.9	289.9	296.7	306.3	313.1	322.6	329.4	339.0
KOTAKBANK	968.6	946.6	951.8	960.2	965.4	973.8	979.0	987.4
LT	1782.4	1718.3	1742.2	1762.3	1786.1	1806.2	1830.1	1850.2
LUPIN	1110.2	1035.8	1057.9	1084.1	1106.2	1132.4	1154.5	1180.7
M&M	1360.1	1284.7	1306.1	1333.1	1354.4	1381.4	1402.8	1429.8
MARUTI	7134.5	6868.5	6947.0	7040.7	7119.3	7213.0	7291.5	7385.2
NTPC	156.5	149.2	151.2	153.8	155.8	158.5	160.5	163.1
ONGC	175.8	166.1	168.7	172.2	174.8	178.3	180.9	184.4
POWERGRID	209.1	196.9	200.0	204.6	207.7	212.2	215.3	219.9
RELIANCE	1356.9	1310.0	1322.8	1339.9	1352.7	1369.7	1382.5	1399.6
SBIN	284.0	273.7	278.5	281.3	286.1	288.8	293.6	296.4
SUNPHARMA	502.6	450.8	471.7	487.2	508.1	523.5	544.4	559.9
TATAMOTORS	481.5	460.7	466.2	473.9	479.4	487.1	492.6	500.3
TATAMTRDVR	285.4	278.4	280.3	282.9	284.8	287.3	289.2	291.8
TATAPOWER	81.2	78.6	79.2	80.2	80.8	81.8	82.4	83.4
TATASTEEL	507.7	487.9	497.0	502.4	511.5	516.9	526.0	531.4
TCS	2572.9	2526.6	2545.3	2559.1	2577.8	2591.6	2610.3	2624.1
TECHM	379.5	327.4	342.0	360.7	375.4	394.1	408.7	427.4
ULTRACEMCO	4061.3	3873.1	3959.0	4010.2	4096.1	4147.3	4233.2	4284.4
VEDL	244.2	233.5	237.0	240.6	244.2	247.8	251.3	254.9
WIPRO	534.6	521.0	525.5	530.1	534.6	539.1	543.6	548.2
YESBANK	1438.3	1355.9	1394.5	1416.4	1455.1	1477.0	1515.6	1537.5
ZEEL	521.8	503.5	508.7	515.3	520.5	527.1	532.3	538.9



BP WEALTH

Technical Research Desk

Tel: +91 22 61596173

Institutional Sales Desk

Tel: +91 22 61596403/04/05

Disclaimer Appendix**Analyst s holding in the Stock : Nil****Analyst s Certification:**

We analysts and the authors of this report, hereby certify that all of the views expressed in this research report accurately reflect our personal views about any and all of the subject issuer s or securities. We also certify that no part of our compensation was, is, or will be directly or indirectly related to the specific recommendation s or view s in this report. Analysts aren't registered as research analysts by FINRA and might not be an associated person of the BP Equities Pvt. Ltd. Institutional Equities.

General Disclaimer

This report has been prepared by the research department of BP EQUITIES Pvt. Ltd, is for information purposes only. This report is not construed as an offer to sell or the solicitation of an offer to buy or sell any security in any jurisdiction where such an offer or solicitation would be illegal.

BP EQUITIES Pvt. Ltd have exercised due diligence in checking the correctness and authenticity of the information contained herein, so far as it relates to current and historical information, but do not guarantee its accuracy or completeness. The opinions expressed are our current opinions as of the date appearing in the material and may be subject to change from time to time. Prospective investors are cautioned that any forward looking statement are not predictions and are subject to change without prior notice.

Recipients of this material should rely on their own investigations and take their own professional advice. BP EQUITIES Pvt. Ltd or any of its affiliates or employees shall not be in any way responsible for any loss or damage that may arise to any person from any inadvertent error in the information contained in this report. BP EQUITIES Pvt. Ltd. or any of its affiliates or employees do not provide, at any time, any express or implied warranty of any kind, regarding any matter pertaining to this report, including without limitation the implied warranties of merchantability, fitness for a particular purpose, and non-infringement. The recipients of this report should rely on their own investigations.

BP EQUITIES Pvt. Ltd and/or its affiliates and/or employees may have interests/ positions, financial or otherwise in the securities mentioned in this report. Opinions expressed are our current opinions as of the date appearing on this material only. While we endeavor to update on a reasonable basis the information discussed in this material, there may be regulatory, compliance, or other reasons that prevent us from doing so.

This report is not directed to or intended for display, downloading, printing, reproducing or for distribution to or use by any person in any locality, state and country or other jurisdiction where such distribution, publication or use would be contrary to the law or regulation or would subject to BP EQUITIES Pvt. Ltd or any of its affiliates to any registration or licensing requirement within such jurisdiction.

Corporate Office:

4th floor,
Rustom Bldg,
29, Veer Nariman Road, Fort,
Mumbai-400001
Phone- +91 22 6159 6464
Fax-+91 22 6159 6160
Website- www.bpwealth.com

Registered Office:

24/26, 1st Floor, Cama Building,
Dalal street, Fort,
Mumbai-400001

BP Equities Pvt. Ltd.
CIN No: U67120MH1997PTC107392