

NIFTY FUT : IMMEDIATE SUPPORT AT 9580



Nifty futures closed 0.15% higher at 9620. Index continued its strong up move for fourth consecutive day which suggests strong buying strength. Earlier index has failed to sustain below its immediate support of 9370 and saw a sharp recovery and covered the losses accrued in last five sessions. Going ahead index has immediate resistance at 9630, a sustenance above this level will continue the up move towards 9690-9750 while support comes at 9580-9520.

Intraday Nifty Future Resistance—9630/9690/9750 Support—9580/9520/9450

BANK NIFTY FUT : RESISTANCE AT 23400



Bank Nifty futures closed 0.52% higher at 23252. Index failed to violate its immediate support of 23100 and regained the loss of Monday Earlier index has failed to sustain below its immediate support of 22500 and saw a sharp recovery and covered the losses accrued in last five sessions. Going ahead till index maintains above 23100 it is expected to continue its up move towards 23650-23800 while support past 23100 comes at 22900-22750.

Intraday Bank Nifty Future Resistance—23400/23650/23800 Support—23100/22900/22750

Technical Trend

INTRADAY TRADER'S PICKS

Sr.No.	STOCK	CLOSE	S1	S2	S3	R1	R2	R3	RECOMMENDATION
1	BANKBARODA	178.50	176	173	170	183	186	189	BUY ABOVE 179.5
2	DEN	87.70	87	85	83	91	93	95	BUY ABOVE 89
3	IGL	1060	1045	1025	1005	1085	1105	1125	BUY ABOVE 1065
4	INFY	996.20	985	970	955	1015	1030	1045	BUY ABOVE 1000
5	INTELLECT	122.50	120	117	114	126	129	132	BUY ABOVE 123

Technical Trend

DERIVATIVES

INDICES SNAPSHOT

SCRIPS	CP AS ON 29/05/2017	CP AS ON 30/05/2017	Change (%)	OI AS ON 29/05/2017	OI AS ON 30/05/2017	Change (%)
BANKNIFTY	23135.95	23251.5	0.50	3175200	3243240	2.14
NIFTY	9605.7	9619.85	0.15	21582300	21961875	1.76
NIFTYIT	10551	10585	0.32	24950	25000	0.20

Derivative Highlights

- ⇒ Nifty Future closed with a premium of 1 point.
- ⇒ Nifty Future Open Interest increased by 1.76%. BankNifty Future Open Interest increased by 2.14%.
- ⇒ Nifty PCR - OI decreased from 1.13 to 1.12, Nifty PCR - Vol remained unchanged at 0.92.
- ⇒ FII Sold 709.97 crore while DII Bought Rs. 290.53 crore in the Cash Segment. FII Bought Rs. 1208.32 crore in Index Futures and Bought Rs. 1032.24 crore in index options, while in Future they Sold Rs. 298.76 crore and Bought Rs 41.95 crore in stock options.
- ⇒ Among Index Option space, Highest Open Interest concentration was seen in 9400 & 9500 Strike price among the PE options. Where as among CE Options Highest Open Interest Concentration was seen in 9700 & 9800 Strike price.
- ⇒ Highest Open Interest Build Up among the PE options was seen in 9500 & 9600 Strike price. Among CE options highest build up was seen in 10000 & 9700 Strike price.

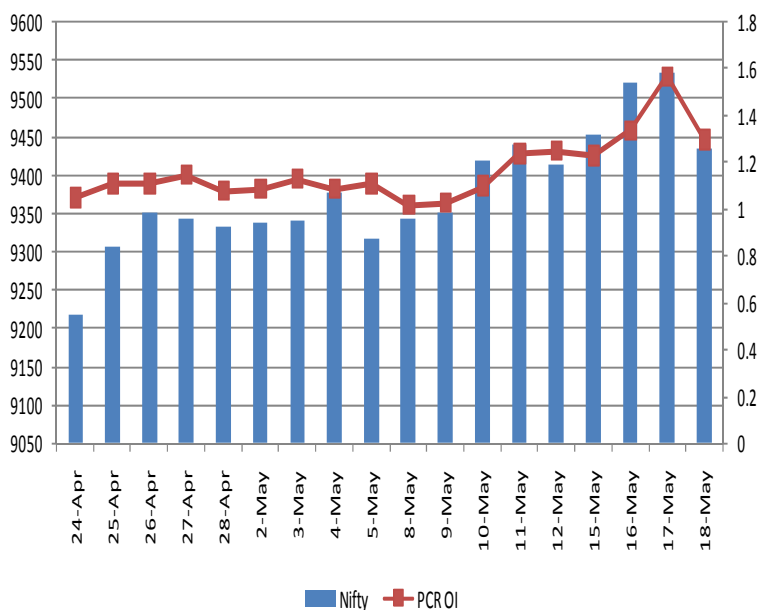
OI Concentration

PUT OPTION		CALL OPTION	
Strike Price	Open Interest	Strike Price	Open Interest
9400	4945200	9700	4210725
9500	4914375	9800	3475500
9300	4179525	9600	3448575
9200	3399400	9500	3096675
9000	3117750	10000	2187825

Highest Change in OI

PUT OPTION		CALL OPTION	
Strike Price	Change in OI	Strike Price	Change in OI
9500	618900	10000	361825
9600	308025	9700	300825
11000	111975	9800	213675
9300	106950	9900	127500
9400	105900	9650	122400

Nifty Future Price V/S PCR-OI



Technical Trend

Stock Analysis

Long Build-up	Long Unwinding	Short Build-up	Short Covering
AUROPHARMA	COALINDIA	APOLLOHOSP	ADANIENT
CEATLTD	NCC	BHEL	ASIANPAINT
GRASIM		HEXAWARE	EQUITAS
M&M		JETAIRWAYS	IDBI
MFSL		JUBLFOOD	SUZLON
PFC		RCOM	TATACHEM

STATISTICS

Highest Premium

SCRIPS	Premium %	Price change %
JPASSOCIAT	1.27	6.79
SINTEX	1.08	-3.63
TV18BRDCST	0.85	1.88
PEL	0.85	2.75
CHOLAFIN	0.81	-3.16

Highest Discount

SCRIPS	Premium %	Price change %
JUSTDIAL	-4.47	-1.01
DISHTV	-3.11	-0.53
RBLBANK	-1.63	0.27
ORIENTBANK	-1.46	1.31
CEATLTD	-1.10	0.03

TOP 5 VOLUME GAINER FOR THE SESSION

SCRIPS	CP AS ON 29/05/2017	CP AS ON 30/05/2017	Change (%)	Vol AS ON 29/05/2017	Vol AS ON 30/05/2017	Change (%)
RECLTD	197.7	206.85	4.63	4636	27477	493%
MFSL	539.2	564.1	4.62	1227	5306	332%
JUBLFOOD	938.75	903.55	-3.75	4865	15852	226%
ADANIENT	111.75	118.7	6.22	1884	5899	213%
PFC	135.85	137.55	1.25	6010	18479	207%

TOP 5 VOLUME LOSER FOR THE SESSION

SCRIPS	CP AS ON 29/05/2017	CP AS ON 30/05/2017	Change (%)	Vol AS ON 29/05/2017	Vol AS ON 30/05/2017	Change (%)
TECHM	380.4	388.8	2.21	17675	3771	-79%
PCJEWELLER	513.05	498.45	-2.85	7978	2131	-73%
TITAN	473.75	472.7	-0.22	4466	1215	-73%
ESCORTS	675.35	672	-0.50	11082	3086	-72%
SUNPHARMA	505.55	511	1.08	53700	15582	-71%

Technical Trend

TOP 10 OPEN INTEREST GAINER FOR THE SESSION

SCRIPS	CP AS ON 29/05/2017	CP AS ON 30/05/2017	Change (%)	OI AS ON 29/05/2017	OI AS ON 30/05/2017	Change (%)
RECLTD	197.7	206.85	4.63	29628000	40206000	35.70
JUBLFOOD	938.75	903.55	-3.75	2152500	2746000	27.57
BERGEPAIN	258.25	257.75	-0.19	730400	871200	19.28
CHOLAFIN	1036.7	1007.45	-2.82	156500	185500	18.53
HEXAWARE	248.35	236.2	-4.89	2496000	2874000	15.14
RCOM	20.35	20.15	-0.98	119532000	133718000	11.87
GODREJIND	587.75	613.65	4.41	1750500	1950000	11.40
M&M	1364.3	1369.7	0.40	3118500	3443500	10.42
NIITTECH	516.35	527.65	2.19	633000	697500	10.19
INDIANB	312.2	312.8	0.19	2010000	2210000	9.95

TOP 10 OPEN INTEREST LOSER FOR THE SESSION

SCRIPS	CP AS ON 29/05/2017	CP AS ON 30/05/2017	Change (%)	OI AS ON 29/05/2017	OI AS ON 30/05/2017	Change (%)
NBCC	195.35	196.55	0.61	3156000	2940000	-6.84
ADANIPTS	329.55	341.3	3.57	11117500	10362500	-6.79
SHREECEM	17822.6	17962.2	0.78	30900	29100	-5.83
CADILAH	457.95	473.3	3.35	2460800	2324800	-5.53
AJANTPHARM	1530.6	1561.4	2.01	383600	363200	-5.32
OIL	307.3	315.95	2.81	1672308	1583934	-5.28
RELIANCE	1353.5	1356.45	0.22	16267000	15707000	-3.44
IGL	1023.35	1056.9	3.28	1533400	1481150	-3.41
PTC	93.1	92.95	-0.16	16856000	16296000	-3.32
HDIL	85.25	86.45	1.41	24192000	23512000	-2.81

Technical Trend

Pivot Report– Nifty 50

Symbol	PClose	Support3	Support2	Support1	Pivot	Resist1	Resist2	Resist3
ACC	1635.2	1559.5	1577.3	1606.2	1624.0	1652.9	1670.7	1699.6
ADANIPTS	340.4	315.5	321.5	330.9	336.9	346.4	352.4	361.8
AMBUJACEM	242.5	231.5	234.4	238.4	241.3	245.4	248.3	252.3
ASIANPAINT	1159.5	1129.8	1138.4	1148.9	1157.5	1168.0	1176.6	1187.1
AUOPHARMA	580.3	451.8	479.2	529.7	557.1	607.7	635.1	685.6
AXISBANK	514.4	493.1	498.4	506.4	511.7	519.7	525.0	533.0
BAJAJ-AUTO	2851.4	2785.7	2803.8	2827.6	2845.8	2869.6	2887.7	2911.5
BANKBARODA	178.5	166.7	169.4	173.9	176.6	181.1	183.8	188.3
BHARTIARTL	370.7	360.3	364.8	367.8	372.3	375.2	379.7	382.7
BOSCHLTD	23538.4	23064.6	23254.8	23396.6	23586.8	23728.6	23918.8	24060.6
BPCL	738.8	708.7	717.2	728.0	736.5	747.2	755.7	766.5
CIPLA	510.5	485.9	493.6	502.1	509.8	518.3	526.0	534.5
COALINDIA	267.7	252.8	256.2	261.9	265.3	271.0	274.4	280.1
DRREDDY	2481.4	2347.8	2382.0	2431.7	2465.8	2515.5	2549.7	2599.4
EICHERMOT	28323.4	27289.9	27551.0	27937.2	28198.3	28584.5	28845.6	29231.8
GAIL	405.5	388.9	393.5	399.5	404.0	410.0	414.6	420.6
HCLTECH	868.2	837.8	845.4	856.8	864.4	875.8	883.4	894.8
HDFC	1579.5	1539.4	1557.2	1568.4	1586.2	1597.3	1615.1	1626.3
HDFCBANK	1629.1	1601.6	1608.9	1619.0	1626.2	1636.3	1643.6	1653.7
HEROMOTOCO	3740.4	3596.2	3628.1	3684.2	3716.1	3772.2	3804.1	3860.2
HINDALCO	203.2	190.2	195.7	199.4	204.9	208.6	214.1	217.8
HINDUNILVR	1072.6	1037.3	1045.3	1059.0	1067.0	1080.6	1088.6	1102.3
IBULHSGFIN	1113.6	1078.0	1086.7	1100.1	1108.8	1122.3	1131.0	1144.4
ICICIBANK	321.4	305.7	310.1	315.7	320.1	325.8	330.2	335.8
INDUSINDBK	1473.9	1442.2	1456.6	1465.2	1479.6	1488.2	1502.6	1511.2
INFRATEL	372.3	351.1	358.4	365.3	372.6	379.5	386.8	393.7
INFY	996.2	961.9	970.3	983.2	991.6	1004.6	1013.0	1025.9
IOC	419.6	404.9	411.7	415.6	422.4	426.3	433.1	437.0
ITC	311.5	304.1	307.1	309.3	312.2	314.4	317.4	319.6
KOTAKBANK	962.0	944.2	949.9	955.9	961.6	967.6	973.3	979.3
LT	1767.6	1656.4	1705.2	1736.4	1785.2	1816.3	1865.1	1896.3
LUPIN	1129.9	1080.6	1095.4	1112.7	1127.5	1144.7	1159.5	1176.8
M&M	1361.1	1305.9	1324.1	1342.6	1360.8	1379.3	1397.5	1416.0
MARUTI	7147.5	6963.1	7023.6	7085.6	7146.1	7208.0	7268.5	7330.5
NTPC	161.3	150.2	153.3	157.3	160.4	164.4	167.5	171.5
ONGC	178.7	168.5	170.8	174.7	177.0	181.0	183.3	187.2
POWERGRID	204.1	194.3	198.2	201.1	205.0	208.0	211.9	214.8
RELIANCE	1359.4	1334.1	1341.3	1350.3	1357.5	1366.5	1373.7	1382.7
SBIN	288.9	274.7	277.9	283.4	286.6	292.1	295.3	300.8
SUNPHARMA	508.0	494.6	498.3	503.2	506.9	511.7	515.4	520.3
TATAMOTORS	481.3	471.5	475.8	478.5	482.8	485.5	489.8	492.5
TATAMTRDVR	286.8	279.5	282.2	284.5	287.2	289.5	292.2	294.5
TATAPOWER	82.4	79.3	80.1	81.2	82.0	83.2	84.0	85.1
TATASTEEL	511.9	496.3	500.3	506.1	510.0	515.8	519.8	525.6
TCS	2551.1	2474.5	2499.7	2525.4	2550.7	2576.4	2601.6	2627.3
TECHM	388.3	374.7	377.8	383.1	386.2	391.5	394.6	399.9
ULTRACEMCO	4082.1	3993.8	4023.0	4052.6	4081.8	4111.4	4140.6	4170.2
VEDL	244.9	235.7	238.1	241.5	243.9	247.3	249.7	253.1
WIPRO	536.2	519.8	524.6	530.4	535.2	541.0	545.8	551.6
YESBANK	1438.4	1397.7	1414.9	1426.6	1443.8	1455.6	1472.8	1484.5
ZEEL	522.6	497.4	503.4	513.0	519.0	528.6	534.6	544.2



BP WEALTH

Technical Research Desk

Tel: +91 22 61596173

Institutional Sales Desk

Tel: +91 22 61596403/04/05

Disclaimer Appendix**Analyst s holding in the Stock : Nil****Analyst s Certification:**

We analysts and the authors of this report, hereby certify that all of the views expressed in this research report accurately reflect our personal views about any and all of the subject issuer s or securities. We also certify that no part of our compensation was, is, or will be directly or indirectly related to the specific recommendation s or view s in this report. Analysts aren't registered as research analysts by FINRA and might not be an associated person of the BP Equities Pvt. Ltd. Institutional Equities.

General Disclaimer

This report has been prepared by the research department of BP EQUITIES Pvt. Ltd, is for information purposes only. This report is not construed as an offer to sell or the solicitation of an offer to buy or sell any security in any jurisdiction where such an offer or solicitation would be illegal.

BP EQUITIES Pvt. Ltd have exercised due diligence in checking the correctness and authenticity of the information contained herein, so far as it relates to current and historical information, but do not guarantee its accuracy or completeness. The opinions expressed are our current opinions as of the date appearing in the material and may be subject to change from time to time. Prospective investors are cautioned that any forward looking statement are not predictions and are subject to change without prior notice.

Recipients of this material should rely on their own investigations and take their own professional advice. BP EQUITIES Pvt. Ltd or any of its affiliates or employees shall not be in any way responsible for any loss or damage that may arise to any person from any inadvertent error in the information contained in this report. BP EQUITIES Pvt. Ltd. or any of its affiliates or employees do not provide, at any time, any express or implied warranty of any kind, regarding any matter pertaining to this report, including without limitation the implied warranties of merchantability, fitness for a particular purpose, and non-infringement. The recipients of this report should rely on their own investigations.

BP EQUITIES Pvt. Ltd and/or its affiliates and/or employees may have interests/ positions, financial or otherwise in the securities mentioned in this report. Opinions expressed are our current opinions as of the date appearing on this material only. While we endeavor to update on a reasonable basis the information discussed in this material, there may be regulatory, compliance, or other reasons that prevent us from doing so.

This report is not directed to or intended for display, downloading, printing, reproducing or for distribution to or use by any person in any locality, state and country or other jurisdiction where such distribution, publication or use would be contrary to the law or regulation or would subject to BP EQUITIES Pvt. Ltd or any of its affiliates to any registration or licensing requirement within such jurisdiction.

Corporate Office:

4th floor,
Rustom Bldg,
29, Veer Nariman Road, Fort,
Mumbai-400001
Phone- +91 22 6159 6464
Fax-+91 22 6159 6160
Website- www.bpwealth.com

Registered Office:

24/26, 1st Floor, Cama Building,
Dalal street, Fort,
Mumbai-400001
BP Equities Pvt. Ltd.
CIN No: U67120MH1997PTC107392