

Technical Trend

INTRADAY TRADER'S PICKS

Sr.No.	STOCK	CLOSE	S1	S2	S3	R1	R2	R3	RECOMMENDATION
1	CORPBANK	39.65	39	38.2	37.4	41	41.8	42.6	BUY ABOVE 40
2	DISHTV	71.35	70.5	69.5	68.5	73.5	74.5	75.5	BUY ABOVE 72
3	GMDC	149.45	148	145	142	154	157	160	BUY ABOVE 151
4	NIITLTD	96.75	95.5	94	92.5	99.5	101	103	BUY ABOVE 97.5
5	UNICHEMLAB	257.2	254	251	248	264	267	270	BUY ABOVE 259

Technical Trend

DERIVATIVES

INDICES SNAPSHOT

SCRIPS	CP AS ON 04/10/2017	CP AS ON 05/10/2017	Change (%)	OI AS ON 04/10/2017	OI AS ON 05/10/2017	Change (%)
BANKNIFTY	24145.4	24107.25	-0.16	2376920	2330160	-1.97
NIFTY	9930.45	9908.7	-0.22	23555100	24606450	4.46
NIFTYIT	10554	10547	-0.07	32300	32850	1.70

Derivative Highlights

- ⇒ Nifty Future closed with a premium of 20 points.
- ⇒ Nifty Future Open Interest increased by 4.46%. BankNifty Future Open Interest decreased by 1.97%.
- ⇒ Nifty PCR - OI decreased from 1.29 to 1.26, Nifty PCR - Vol increased from 1.02 to 0.95
- ⇒ FII Sold Rs 656.50 crore while DII Bought Rs. 519.03 crore in the Cash Segment. FII Sold Rs. 490.25 crore in Index Futures and Bought Rs.1504.55 crore in index options, while in Future they Bought Rs. 128.88 crore and Bought Rs 148.81 crore in stock options
- ⇒ Among Index Option space, Highest Open Interest concentration was seen in 9800 & 9700 Strike price among the PE options. Where as among CE Options Highest Open Interest Concentration was seen in 10000 & 9900 Strike price.
- ⇒ Highest Open Interest Build Up among the PE options was seen in 9800 & 9300 Strike price. Among CE options highest build up was seen in 10000 & 10200 Strike price.

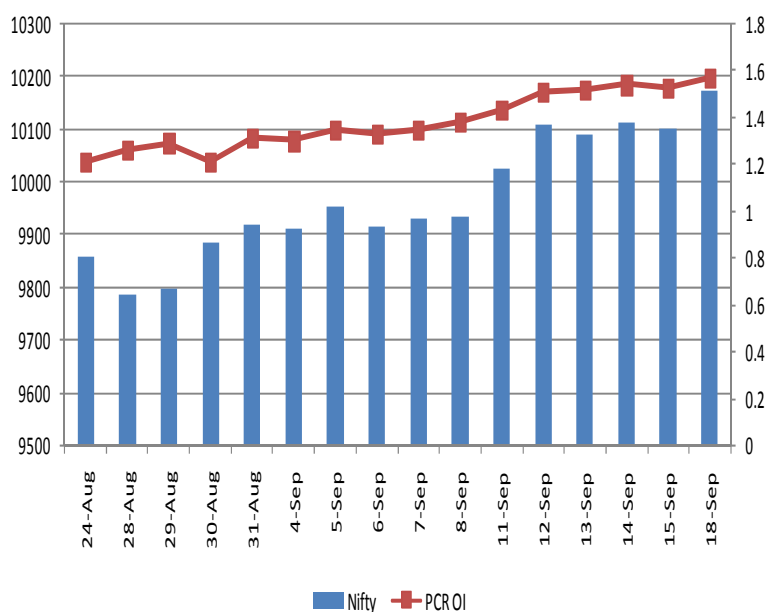
OI Concentration

PUT OPTION		CALL OPTION	
Strike Price	Open Interest	Strike Price	Open Interest
9800	4686825	10000	4777275
9700	3787800	9900	3637500
9900	3411075	10100	3479325
9500	3317550	10200	3031200
9600	3302100	10300	2260875

Highest Change in OI

PUT OPTION		CALL OPTION	
Strike Price	Change in OI	Strike Price	Change in OI
9800	195600	10000	467475
9300	144375	10200	451725
9900	131400	9900	305775
9100	66000	10100	288750
9500	58575	9950	194550

Nifty Future Price V/S PCR-OI



Technical Trend

Stock Analysis

Long Build-up	Long Unwinding	Short Build-up	Short Covering
ARVIND	BAJAJFINSV	AXISBANK	APOLLOHOSP
BAJFINANCE	BEL	CONCOR	BERGEPAIN
COALINDIA	CHOLAFIN	ENGINERSIN	DCBBANK
HCLTECH	MINDTREE	HINDALCO	ESCORTS
JUBLFOOD	NESTLEIND	L&TFH	LICHSGFIN
RAYMOND	TECHM	POWERGRID	RELINFRA

STATISTICS

Highest Premium

SCRIPS	Premium %	Price change %
GMRINFRA	0.93	-0.92
NHPC	0.72	-0.72
GSFC	0.67	0.60
HDIL	0.62	2.63
IDFCBANK	0.62	1.16

Highest Discount

SCRIPS	Premium %	Price change %
COLPAL	-0.30	1.10
HDFCBANK	-0.19	0.09
IOC	-0.14	0.49
NESTLEIND	-0.13	0.95
OIL	-0.10	-0.20

TOP 5 VOLUME GAINER FOR THE SESSION

SCRIPS	CP AS ON 04/10/2017	CP AS ON 05/10/2017	Change (%)	Vol AS ON 04/10/2017	Vol AS ON 05/10/2017	Change (%)
ICIL	99.65	108.3	8.68	401	2768	590.27%
SUZLON	15.75	15.3	-2.86	870	4196	382.30%
TATACHEM	641.05	667	4.05	821	3747	356.39%
KPIT	123.8	129.65	4.73	568	2586	355.28%
JUSTDIAL	369.5	395.05	6.91	1761	7927	350.14%

TOP 5 VOLUME LOSER FOR THE SESSION

SCRIPS	CP AS ON 04/10/2017	CP AS ON 05/10/2017	Change (%)	Vol AS ON 04/10/2017	Vol AS ON 05/10/2017	Change (%)
NHPC	28.05	27.85	-0.71	750	202	-73.07%
JPASSOCIAT	19.05	19.15	0.52	1687	469	-72.20%
BATAINDIA	733.55	727.4	-0.84	5124	1660	-67.60%
PCJEWELLER	369.4	367.4	-0.54	7164	2551	-64.39%
VGUARD	190.5	188.75	-0.92	797	298	-62.61%

Technical Trend

TOP 10 OPEN INTEREST GAINER FOR THE SESSION

SCRIPS	CP AS ON 04/10/2017	CP AS ON 05/10/2017	Change (%)	OI AS ON 04/10/2017	OI AS ON 05/10/2017	Change (%)
JUBLFOOD	1414.05	1489.3	5.32	1796000	2265500	26.14
POWERGRID	209.3	206	-1.58	15760000	18192000	15.43
NIITTECH	549.9	564	2.56	730500	817500	11.91
ENGINEERSIN	151.1	147.75	-2.22	11098500	12201000	9.93
ICIL	99.65	108.3	8.68	10944500	11963000	9.31
JUSTDIAL	369.5	395.05	6.91	4034400	4383600	8.66
HEXAWARE	267.9	266.2	-0.63	1971000	2136000	8.37
TORNTPHARM	1258.7	1255.9	-0.22	284800	307200	7.87
BRITANNIA	4352.5	4385.7	0.76	540400	577800	6.92
IGL	1459.05	1445.65	-0.92	1073050	1147300	6.92

TOP 10 OPEN INTEREST LOSER FOR THE SESSION

SCRIPS	CP AS ON 04/10/2017	CP AS ON 05/10/2017	Change (%)	OI AS ON 04/10/2017	OI AS ON 05/10/2017	Change (%)
BERGEPAIN	254.75	256.4	0.65	1872200	1678600	-10.34
APOLLOHOSP	1051.75	1081.3	2.81	1520500	1382000	-9.11
BATAINDIA	733.55	727.4	-0.84	2275900	2120800	-6.81
PVR	1271.3	1298.65	2.15	768800	725200	-5.67
JPASSOCIAT	19.05	19.15	0.52	204612000	195500000	-4.45
CANBK	308.75	311.55	0.91	12635148	12166380	-3.71
REPCOHOME	647.6	643.55	-0.63	885500	856800	-3.24
DIVISLAB	875.85	866.25	-1.10	6049600	5863200	-3.08
PETRONET	235.4	239	1.53	12837000	12453000	-2.99
GAIL	436.35	432.55	-0.87	15752000	15328000	-2.69

Technical Trend

Pivot Report– Nifty 50

Symbol	PClose	Support3	Support2	Support1	Pivot	Resist1	Resist2	Resist3
ADANIPTS	385.9	378.7	381.5	383.7	386.4	388.6	391.4	393.6
AMBUJACEM	274.0	265.4	267.5	270.7	272.9	276.1	278.2	281.4
ASIANPAINT	1153.3	1132.8	1140.2	1146.7	1154.1	1160.6	1168.0	1174.5
AUOPHARMA	742.9	702.2	714.6	728.7	741.1	755.2	767.6	781.7
AXISBANK	501.2	486.1	491.8	496.5	502.2	506.9	512.6	517.3
BAJAJ-AUTO	3130.8	3036.0	3078.7	3104.7	3147.4	3173.4	3216.1	3242.1
BAJFINANCE	1866.2	1822.5	1838.9	1852.6	1869.0	1882.7	1899.1	1912.8
BHARTIARTL	377.7	366.2	369.7	373.7	377.2	381.2	384.7	388.7
BOSCHLTD	20782.8	20391.5	20524.6	20653.7	20786.8	20915.9	21049.0	21178.1
BPCL	480.1	465.7	470.5	475.3	480.0	484.8	489.6	494.4
CIPLA	585.4	568.7	573.9	579.6	584.8	590.6	595.8	601.5
COALINDIA	273.3	265.3	267.2	270.2	272.1	275.1	277.0	280.0
DRREDDY	2389.2	2314.9	2345.5	2367.3	2397.9	2419.7	2450.3	2472.1
EICHERMOT	30788.7	30113.0	30412.6	30600.7	30900.3	31088.4	31388.0	31576.1
GAIL	430.9	417.9	423.8	427.3	433.2	436.7	442.6	446.1
HCLTECH	893.2	868.4	876.8	885.0	893.3	901.5	909.9	918.1
HDFC	1751.7	1713.3	1730.7	1741.2	1758.6	1769.1	1786.5	1797.0
HDFCBANK	1798.6	1780.9	1787.0	1792.8	1798.9	1804.7	1810.8	1816.6
HEROMOTOCO	3755.5	3691.0	3720.5	3738.0	3767.5	3785.0	3814.5	3832.0
HINDALCO	240.8	235.7	237.6	239.2	241.0	242.6	244.5	246.1
HINDPETRO	435.7	417.4	425.2	430.4	438.2	443.4	451.2	456.4
HINDUNILVR	1187.7	1157.8	1170.5	1179.1	1191.8	1200.4	1213.1	1221.7
IBULHSGFIN	1261.4	1227.4	1239.7	1250.5	1262.8	1273.6	1285.9	1296.7
ICICIBANK	271.8	263.2	267.1	269.5	273.4	275.8	279.7	282.1
INDUSINDBK	1688.8	1656.2	1669.6	1679.2	1692.6	1702.2	1715.6	1725.2
INFRATEL	404.7	390.2	396.4	400.5	406.8	410.9	417.1	421.2
INFY	903.1	893.8	896.4	899.7	902.3	905.7	908.3	911.6
IOC	406.8	394.3	397.8	402.3	405.7	410.2	413.7	418.2
ITC	265.3	258.3	261.4	263.3	266.4	268.3	271.4	273.3
KOTAKBANK	1032.8	1006.0	1013.1	1023.0	1030.1	1040.0	1047.1	1057.0
LT	1132.1	1107.8	1118.2	1125.1	1135.5	1142.4	1152.8	1159.7
LUPIN	1029.2	1006.6	1014.8	1022.0	1030.3	1037.5	1045.7	1052.9
M&M	1300.8	1267.5	1280.3	1290.5	1303.3	1313.5	1326.3	1336.5
MARUTI	7831.1	7698.0	7752.6	7791.8	7846.4	7885.6	7940.2	7979.4
NTPC	171.1	164.9	166.4	168.7	170.2	172.5	174.0	176.3
ONGC	171.2	168.5	169.7	170.4	171.6	172.3	173.5	174.2
POWERGRID	205.0	197.7	200.9	202.9	206.2	208.2	211.4	213.4
RELIANCE	824.2	809.3	814.0	819.1	823.8	828.9	833.6	838.7
SBIN	251.6	244.3	246.7	249.2	251.6	254.1	256.5	259.0
SUNPHARMA	513.8	495.9	503.9	508.9	516.9	521.9	529.9	534.9
TATAMOTORS	423.3	414.6	417.4	420.3	423.1	426.0	428.8	431.7
TATASTEEL	661.0	649.3	653.4	657.2	661.3	665.1	669.2	673.0
TCS	2429.6	2402.5	2413.4	2421.5	2432.5	2440.6	2451.5	2459.6
TECHM	451.0	428.6	438.6	444.8	454.7	460.9	470.9	477.1
ULTRACEMCO	3894.4	3786.6	3820.4	3857.4	3891.2	3928.2	3962.0	3999.0
UPL	784.7	766.5	773.7	779.2	786.5	792.0	799.2	804.7
VEDL	318.4	313.1	315.3	316.9	319.1	320.6	322.8	324.4
WIPRO	283.6	279.0	280.5	282.0	283.5	285.1	286.6	288.1
YESBANK	359.5	344.6	350.8	355.1	361.3	365.6	371.8	376.1
ZEEL	521.6	514.1	516.7	519.1	521.7	524.2	526.8	529.2



BP WEALTH

Technical Research Desk

Tel: +91 22 61596173

Institutional Sales Desk

Tel: +91 22 61596403/04/05

Disclaimer Appendix

Analyst s holding in the Stock : Nil

Analyst s Certification:

We analysts and the authors of this report, hereby certify that all of the views expressed in this research report accurately reflect our personal views about any and all of the subject issuer s or securities. We also certify that no part of our compensation was, is, or will be directly or indirectly related to the specific recommendation s or view s in this report. Analysts aren't registered as research analysts by FINRA and might not be an associated person of the BP Equities Pvt. Ltd. Institutional Equities.

General Disclaimer

This report has been prepared by the research department of BP EQUITIES Pvt. Ltd, is for information purposes only. This report is not construed as an offer to sell or the solicitation of an offer to buy or sell any security in any jurisdiction where such an offer or solicitation would be illegal.

BP EQUITIES Pvt. Ltd have exercised due diligence in checking the correctness and authenticity of the information contained herein, so far as it relates to current and historical information, but do not guarantee its accuracy or completeness. The opinions expressed are our current opinions as of the date appearing in the material and may be subject to change from time to time. Prospective investors are cautioned that any forward looking statement are not predictions and are subject to change without prior notice.

Recipients of this material should rely on their own investigations and take their own professional advice. BP EQUITIES Pvt. Ltd or any of its affiliates or employees shall not be in any way responsible for any loss or damage that may arise to any person from any inadvertent error in the information contained in this report. BP EQUITIES Pvt. Ltd. or any of its affiliates or employees do not provide, at any time, any express or implied warranty of any kind, regarding any matter pertaining to this report, including without limitation the implied warranties of merchantability, fitness for a particular purpose, and non-infringement. The recipients of this report should rely on their own investigations.

BP EQUITIES Pvt. Ltd and/or its affiliates and/or employees may have interests/ positions, financial or otherwise in the securities mentioned in this report. Opinions expressed are our current opinions as of the date appearing on this material only. While we endeavor to update on a reasonable basis the information discussed in this material, there may be regulatory, compliance, or other reasons that prevent us from doing so.

This report is not directed to or intended for display, downloading, printing, reproducing or for distribution to or use by any person in any locality, state and country or other jurisdiction where such distribution, publication or use would be contrary to the law or regulation or would subject to BP EQUITIES Pvt. Ltd or any of its affiliates to any registration or licensing requirement within such jurisdiction.

Corporate Office:

4th floor,
Rustom Bldg,
29, Veer Nariman Road, Fort,
Mumbai-400001
Phone- +91 22 6159 6464
Fax-+91 22 6159 6160
Website- www.bpwealth.com

Registered Office:

24/26, 1st Floor, Cama Building,
Dalal street, Fort,
Mumbai-400001
BP Equities Pvt. Ltd.
CIN No: U67120MH1997PTC107392