

**NIFTY FUT : IMMEDIATE RESISTANCE AT 10500**



Source: Falcon, BP Equities Research

Nifty futures closed higher by 1.02% at 10441. Index had a gap up opening and sustained the gains throughout the session. Earlier Index has given breakout from the consolidation in which it was moving for past over two months which is a bullish signal for short term trend. RSI has surpassed down sloping trend line which is a bullish signal and compliments the bullish view of price. Going ahead till index sustains above 10380 it is expected to continue the up move towards 10500-10600 while support comes at past 10380 comes at 10320-10280.

Intraday Nifty Future

Resistance—10500/10540/10600

Support—10380/10320/10240

**BANK NIFTY FUT : IMMEDIATE RESISTANCE AT 25550**



Source: Falcon, BP Equities Research

Bank Nifty futures closed 1.88% higher at 25490. Index has given a breakout from the sideways movement of last three months which is a bullish signal for medium term trend. RSI has surpassed down sloping trend line which is a bullish signal for short term trend. Going ahead index till index sustains above 25200 it is expected to continue its up move towards 25800-26400.

Intraday Bank Nifty Future

Resistance—25550/25650/25800

Support—25350/25200/25200

## Technical Trend

### INTRADAY TRADER'S PICKS

Sr.No.	STOCK	CLOSE	S1	S2	S3	R1	R2	R3	RECOMMENDATION
1	COCHINSHIP	578.30	575	569	563	587	593	599	<b>BUY ABOVE 581</b>
2	EXIDEIND	211.90	209	206	203	217	220	223	<b>BUY ABOVE 213</b>
3	LICHSGFIN	597.30	593	586	579	573	614	620	<b>BUY ABOVE 600</b>
4	MUTHOOTFIN	511.85	506	499	493	522	529	535	<b>BUY ABOVE 514</b>
5	NBCC	262.85	261	257	253	270	275	279	<b>BUY ABOVE 265</b>

## Technical Trend

### DERIVATIVES

#### INDICES SNAPSHOT

SCRIPS	CP AS ON 31/10/2017	CP AS ON 01/11/2017	Change (%)	OI AS ON 31/10/2017	OI AS ON 01/11/2017	Change (%)
BANKNIFTY	25057.45	25530.25	1.89	1763720	2133160	20.95
NIFTY	10368.5	10477.3	1.05	24671025	25422600	3.05
NIFTYIT	10891	10872	-0.17	31550	31700	0.48

#### Derivative Highlights

- ⇒ Nifty Future closed with a premium of 37 points.
- ⇒ Nifty Future Open Interest increased by 3.05%. BankNifty Future Open Interest increased by 20.95%.
- ⇒ Nifty PCR - OI increased from 1.45 to 1.50, Nifty Bank PCR - OI increased from 1.6 to 1.52
- ⇒ FII Bought Rs 1038.31 crore while DII Sold Rs. 667.91 crore in the Cash Segment. FII Sold Rs. 49.30 crore in Index Futures and Bought Rs.215.22 crore in index options, while in Future they Bought Rs. 224.55 crore and Sold Rs 0.01 crore in stock options
- ⇒ Among Index Option space, Highest Open Interest concentration was seen in 10000 & 10200 Strike price among the PE options. Where as among CE Options Highest Open Interest Concentration was seen in 10500 & 10400 Strike price.
- ⇒ Highest Open Interest Build Up among the PE options was seen in 10200 & 9600 Strike price. Among CE options highest build up was seen in 10400 & 10200 Strike price.

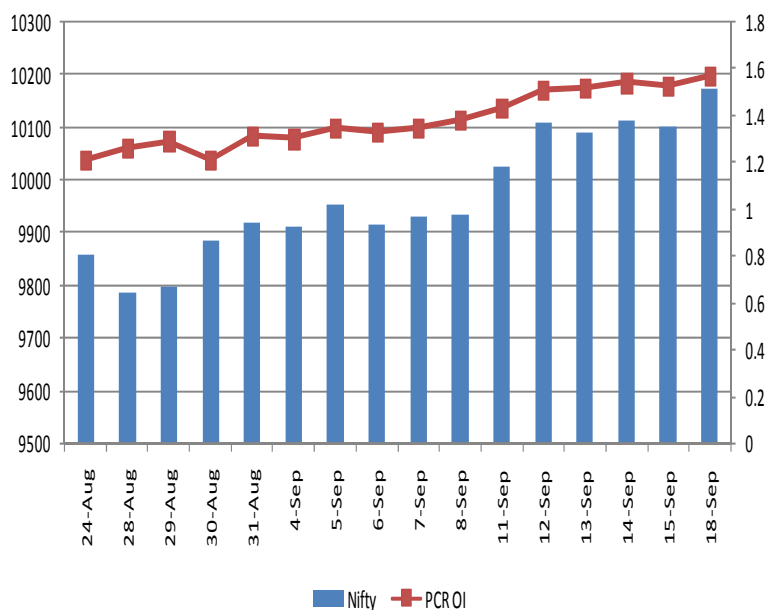
#### OI Concentration

PUT OPTION		CALL OPTION	
Strike Price	Open Interest	Strike Price	Open Interest
10000	5251950	10500	3423225
10200	4763550	10400	3160575
10300	4173975	10700	2561925
10100	3831000	10300	2425350
10400	2659500	10600	2065125

#### Highest Change in OI

PUT OPTION		CALL OPTION	
Strike Price	Change in OI	Strike Price	Change in OI
10200	362100	10400	1126575
9600	224625	10200	572850
10100	181875	10300	517050
10000	160425	10100	331650
10300	157500	10600	283950

#### Nifty Future Price V/S PCR-OI



## Technical Trend

### Stock Analysis

Long Build-up	Long Unwinding	Short Build-up	Short Covering
ARVIND	APOLLOTYRE	ASHOKLEY	ADANIPOINTS
BATAINDIA	BAJAJ-AUTO	ASIANPAINT	CONCOR
DABUR	HEROMOTOCO	EICHERMOT	HINDUNILVR
GODREJIND	INDIGO	ENGINEERSIN	HINDZINC
KOTAKBANK	KSCL	IGL	MARUTI
TATAMOTORS	RELINFRA	INDIACEM	UJJIVAN

### STATISTICS

#### Highest Premium

SCRIPS	Premium %	Price change %
JPASSOCIAT	1.09	-1.08
NESTLEIND	1.01	1.09
HCC	1.01	-0.38
PTC	0.97	1.02
ADANIPOWER	0.92	-0.31

#### Highest Discount

SCRIPS	Premium %	Price change %
PFC	-2.71	0.54
HEXAWARE	-1.51	-1.28
ONGC	-1.44	-0.05
OIL	-1.30	0.34
COALINDIA	-0.85	0.03

#### TOP 5 VOLUME GAINER FOR THE SESSION

SCRIPS	CP AS ON 31/10/2017	CP AS ON 01/11/2017	Change (%)	OI AS ON 31/10/2017	OI AS ON 01/11/2017	Change (%)
IBREALEST	226.45	236.55	4.46	1058	13559	1181.57%
GODFRYPHLP	1014.15	1038.55	2.41	102	900	782.35%
VGUARD	216	230.25	6.60	480	4050	743.75%
RAYMOND	898.35	967.9	7.74	983	7698	683.11%
CHOLAFIN	1157.25	1232.7	6.52	467	3626	676.45%

#### TOP 5 VOLUME LOSER FOR THE SESSION

SCRIPS	CP AS ON 31/10/2017	CP AS ON 01/11/2017	Change (%)	OI AS ON 31/10/2017	OI AS ON 01/11/2017	Change (%)
BEL	185.55	185.85	0.16	9298	1711	-81.60%
AJANTPHARM	1226.4	1218.95	-0.61	5550	1224	-77.95%
NIITTECH	681.85	658.95	-3.36	2550	740	-70.98%
CHENNPETRO	472.05	466.7	-1.13	1837	535	-70.88%
RCOM	17.2	17.15	-0.29	7590	2267	-70.13%

## Technical Trend

### TOP 10 OPEN INTEREST GAINER FOR THE SESSION

SCRIPS	CP AS ON 31/10/2017	CP AS ON 01/11/2017	Change (%)	OI AS ON 31/10/2017	OI AS ON 01/11/2017	Change (%)
VGUARD	216	230.25	6.60	2397000	3174000	32.42
HEXAWARE	283.95	276.9	-2.48	1881000	2490000	32.38
ESCORTS	764.65	746.45	-2.38	2891900	3487000	20.58
CHOLAFIN	1157.25	1232.7	6.52	370000	440500	19.05
POWERGRID	212.9	211.7	-0.56	19680000	22876000	16.24
IBREALEST	226.45	236.55	4.46	41710000	48417500	16.08
DRREDDY	2440.6	2372.5	-2.79	4027900	4636950	15.12
BHARTIARTL	501.15	543.4	8.43	35870000	41284500	15.09
MGL	1210.2	1261.85	4.27	648000	742800	14.63
EICHERMOT	32455.7	31159.05	-4.00	149125	169775	13.85

### TOP 10 OPEN INTEREST LOSER FOR THE SESSION

SCRIPS	CP AS ON 31/10/2017	CP AS ON 01/11/2017	Change (%)	OI AS ON 31/10/2017	OI AS ON 01/11/2017	Change (%)
CONCOR	1394.7	1397.95	0.23	1471250	1195625	-18.73
NIITTECH	681.85	658.95	-3.36	1020000	841500	-17.50
INDIGO	1253	1250.2	-0.22	2622000	2183400	-16.73
DLF	202.15	209.15	3.46	44490000	39220000	-11.85
HDFC	1714.75	1760.35	2.66	12208500	11014000	-9.78
CHENNPETRO	472.05	466.7	-1.13	1620000	1498500	-7.50
VOLTAS	568.5	564.5	-0.70	2438000	2293000	-5.95
GSFC	161.75	160.4	-0.83	21942000	20695500	-5.68
MOTHERSUMI	367.85	371.1	0.88	12431250	11810350	-4.99
AXISBANK	523.1	534.85	2.25	47624400	45430800	-4.61

## Pivot Report– Nifty 50

Symbol	PClose	Support3	Support2	Support1	Pivot	Resist1	Resist2	Resist3
ADANIPTS	429.8	417.5	422.7	426.2	<b>431.4</b>	434.9	440.1	443.6
AMBUJACEM	283.6	271.4	275.0	279.3	<b>282.8</b>	287.1	290.7	295.0
ASIANPAINT	1179.9	1153.3	1165.1	1172.5	<b>1184.3</b>	1191.7	1203.5	1210.9
AUOPHARMA	767.2	740.8	748.6	757.9	<b>765.7</b>	775.0	782.8	792.1
AXISBANK	484.0	473.3	477.5	480.7	<b>484.9</b>	488.1	492.3	495.5
BAJAJ-AUTO	3282.2	3214.6	3244.8	3263.5	<b>3293.7</b>	3312.4	3342.6	3361.3
BAJFINANCE	1804.3	1750.9	1774.3	1789.3	<b>1812.8</b>	1827.8	1851.2	1866.2
BHARTIARTL	492.9	475.1	480.6	486.7	<b>492.2</b>	498.4	503.9	510.0
BOSCHLTD	21259.1	20935.5	21068.6	21163.8	<b>21296.9</b>	21392.1	21525.2	21620.4
BPCL	536.3	496.4	510.5	523.4	<b>537.5</b>	550.3	564.4	577.3
CIPLA	626.1	601.6	608.1	617.1	<b>623.5</b>	632.5	639.0	648.0
COALINDIA	288.9	279.9	282.5	285.7	<b>288.3</b>	291.5	294.1	297.3
DRREDDY	2438.5	2284.1	2325.6	2382.0	<b>2423.5</b>	2480.0	2521.5	2577.9
EICHERMOT	32371.1	31330.7	31590.4	31980.7	<b>32240.4</b>	32630.7	32890.4	33280.7
GAIL	475.7	456.8	462.0	468.9	<b>474.1</b>	481.0	486.2	493.1
HCLTECH	836.4	793.0	812.5	824.4	<b>843.9</b>	855.9	875.4	887.3
HDFC	1705.8	1648.6	1666.9	1686.3	<b>1704.6</b>	1724.0	1742.3	1761.7
HDFCBANK	1815.0	1776.0	1784.2	1799.6	<b>1807.8</b>	1823.2	1831.4	1846.8
HEROMOTOCO	3833.0	3769.4	3785.5	3809.3	<b>3825.4</b>	3849.1	3865.2	3889.0
HINDALCO	273.2	265.2	267.8	270.5	<b>273.2</b>	275.9	278.5	281.2
HINDPETRO	454.8	436.4	444.9	449.9	<b>458.4</b>	463.3	471.8	476.8
HINDUNILVR	1234.2	1180.2	1205.1	1219.7	<b>1244.6</b>	1259.1	1284.0	1298.6
IBULHSGFIN	1261.1	1217.7	1229.6	1245.4	<b>1257.3</b>	1273.0	1284.9	1300.7
ICICIBANK	300.6	281.2	288.2	294.4	<b>301.4</b>	307.6	314.6	320.8
INDUSINDBK	1620.8	1588.2	1603.2	1612.0	<b>1626.9</b>	1635.7	1650.7	1659.5
INFRATEL	429.7	409.3	415.5	422.6	<b>428.8</b>	435.9	442.1	449.2
INFY	931.1	912.2	920.2	925.7	<b>933.6</b>	939.1	947.0	952.5
IOC	416.3	404.9	409.2	412.7	<b>417.0</b>	420.5	424.8	428.3
ITC	265.2	255.1	259.3	262.2	<b>266.4</b>	269.4	273.6	276.5
KOTAKBANK	1028.9	1008.1	1014.3	1021.6	<b>1027.8</b>	1035.1	1041.3	1048.6
LT	1237.0	1211.7	1217.9	1227.4	<b>1233.7</b>	1243.2	1249.4	1258.9
LUPIN	1026.0	884.8	938.7	982.3	<b>1036.2</b>	1079.8	1133.7	1177.3
M&M	1374.8	1343.1	1356.6	1365.7	<b>1379.2</b>	1388.3	1401.8	1410.9
MARUTI	8195.3	8030.3	8096.8	8146.0	<b>8212.5</b>	8261.7	8328.2	8377.4
NTPC	182.6	181.0	181.6	182.1	<b>182.6</b>	183.1	183.7	184.2
ONGC	186.6	179.3	182.6	184.6	<b>188.0</b>	190.0	193.3	195.3
POWERGRID	212.4	208.7	210.3	211.3	<b>212.9</b>	214.0	215.6	216.6
RELIANCE	942.5	918.6	924.6	933.6	<b>939.6</b>	948.5	954.5	963.5
SBIN	312.0	295.9	303.2	307.6	<b>315.0</b>	319.4	326.7	331.1
SUNPHARMA	553.1	532.5	538.3	545.7	<b>551.5</b>	558.9	564.7	572.1
TATAMOTORS	436.6	416.9	422.6	429.6	<b>435.3</b>	442.3	448.0	455.0
TATASTEEL	718.3	687.4	700.3	709.3	<b>722.1</b>	731.1	744.0	753.0
TCS	2616.2	2553.6	2567.7	2591.9	<b>2606.0</b>	2630.2	2644.3	2668.5
TECHM	485.6	462.5	468.3	476.9	<b>482.7</b>	491.4	497.2	505.8
ULTRACEMCO	4472.3	4383.6	4406.8	4439.5	<b>4462.8</b>	4495.5	4518.7	4551.4
UPL	824.4	777.9	797.3	810.9	<b>830.3</b>	843.8	863.2	876.8
VEDL	341.0	333.8	336.8	338.9	<b>341.8</b>	343.9	346.9	349.0
WIPRO	293.3	287.2	289.6	291.4	<b>293.9</b>	295.7	298.1	299.9
YESBANK	314.9	300.1	304.1	309.5	<b>313.5</b>	318.8	322.8	328.2
ZEEL	549.0	532.2	536.2	542.6	<b>546.7</b>	553.1	557.1	563.5



BP WEALTH

Technical Research Desk

Tel: +91 22 61596173

Institutional Sales Desk

Tel: +91 22 61596403/04/05

## Disclaimer Appendix

### Analyst s holding in the Stock : Nil

#### Analyst s Certification:

We analysts and the authors of this report, hereby certify that all of the views expressed in this research report accurately reflect our personal views about any and all of the subject issuer s or securities. We also certify that no part of our compensation was, is, or will be directly or indirectly related to the specific recommendation s or view s in this report. Analysts aren't registered as research analysts by FINRA and might not be an associated person of the BP Equities Pvt. Ltd. Institutional Equities.

#### General Disclaimer

This report has been prepared by the research department of BP EQUITIES Pvt. Ltd, is for information purposes only. This report is not construed as an offer to sell or the solicitation of an offer to buy or sell any security in any jurisdiction where such an offer or solicitation would be illegal.

BP EQUITIES Pvt. Ltd have exercised due diligence in checking the correctness and authenticity of the information contained herein, so far as it relates to current and historical information, but do not guarantee its accuracy or completeness. The opinions expressed are our current opinions as of the date appearing in the material and may be subject to change from time to time. Prospective investors are cautioned that any forward looking statement are not predictions and are subject to change without prior notice.

Recipients of this material should rely on their own investigations and take their own professional advice. BP EQUITIES Pvt. Ltd or any of its affiliates or employees shall not be in any way responsible for any loss or damage that may arise to any person from any inadvertent error in the information contained in this report. BP EQUITIES Pvt. Ltd. or any of its affiliates or employees do not provide, at any time, any express or implied warranty of any kind, regarding any matter pertaining to this report, including without limitation the implied warranties of merchantability, fitness for a particular purpose, and non-infringement. The recipients of this report should rely on their own investigations.

BP EQUITIES Pvt. Ltd and/or its affiliates and/or employees may have interests/ positions, financial or otherwise in the securities mentioned in this report. Opinions expressed are our current opinions as of the date appearing on this material only. While we endeavor to update on a reasonable basis the information discussed in this material, there may be regulatory, compliance, or other reasons that prevent us from doing so.

This report is not directed to or intended for display, downloading, printing, reproducing or for distribution to or use by any person in any locality, state and country or other jurisdiction where such distribution, publication or use would be contrary to the law or regulation or would subject to BP EQUITIES Pvt. Ltd or any of its affiliates to any registration or licensing requirement within such jurisdiction.

#### Corporate Office:

4th floor,  
Rustom Bldg,  
29, Veer Nariman Road, Fort,  
Mumbai-400001  
Phone- +91 22 6159 6464  
Fax-+91 22 6159 6160  
Website- [www.bpwealth.com](http://www.bpwealth.com)

#### Registered Office:

24/26, 1st Floor, Cama Building,  
Dalal street, Fort,  
Mumbai-400001  
BP Equities Pvt. Ltd.  
CIN No: U67120MH1997PTC107392