

NIFTY FUT : IMMEDIATE RESISTANCE AT 9960



Source: Falcon, BP Equities Research

Nifty futures closed lower by 0.62% at 9913. Index opened gap up but failed to sustain the gains and saw sharp selloff. Index has given breakout from a small triangle but is failing to sustain above the upper trend line. Index earlier had reversed after taking support at lower trend line of the broadening wedge wedge this trend line is expected to act as strong support for short term trend. Going ahead index has immediate resistance at 9950-10000, for index to continue its up move it needs to surpass this level which if it does will open the way for 10060-10120 while support comes at 9860-9780.

Intraday Nifty Future Resistance—9960/10010/10050 Support—9870/9830/9790

BANK NIFTY FUT : IMMEDIATE RESISTANCE AT 24350



Source: Falcon, BP Equities Research

Bank Nifty futures closed 0.54% higher at 24116. Index is failing to sustain above the upper trend line of the small triangle. Going ahead index has immediate resistance at 24550, for index continue its pullback it needs to surpass this level which if it does will open the way for 24720 while support comes at 24150-23840.

Intraday Bank Nifty Future Resistance—24350/24450/24550 Support—24150/23950/23840

Technical Trend

DERIVATIVES

INDICES SNAPSHOT

SCRIPS	CP AS ON 01/09/2017	CP AS ON 04/09/2017	Change (%)	OI AS ON 01/08/2017	OI AS ON 04/09/2017	Change (%)
BANKNIFTY	24483.45	24289.65	-0.79	1915360	1924320	0.47
NIFTY	10007.3	9927.65	-0.80	17519100	18062175	3.10
NIFTYIT	10553	10455	-0.93	29050	30800	6.02

Derivative Highlights

- ⇒ Nifty Future closed with a premium of 14 points.
- ⇒ Nifty Future Open Interest increased by 3.10%. BankNifty Future Open Interest increased by 0.47%.
- ⇒ Nifty PCR - OI was observed to be 1.30, Nifty PCR - Vol was observed to be 1.27
- ⇒ FII Sold Rs 873.91 crore while DII Sold Rs. 49.10 crore in the Cash Segment. FII Sold Rs. 469.57 crore in Index Futures and Bought Rs. 999.24 crore in index options, while in Future they Bought Rs. 214.08 crore and Bought Rs 38.01 crore in stock options¹
- ⇒ Among Index Option space, Highest Open Interest concentration was seen in 9700 & 9800 Strike price among the PE options. Where as among CE Options Highest Open Interest Concentration was seen in 10000 & 10100 Strike price.
- ⇒ Highest Open Interest Build Up among the PE options was seen in 9700 & 9600 Strike price. Among CE options highest build up was seen in 10000 & 9900 Strike price.

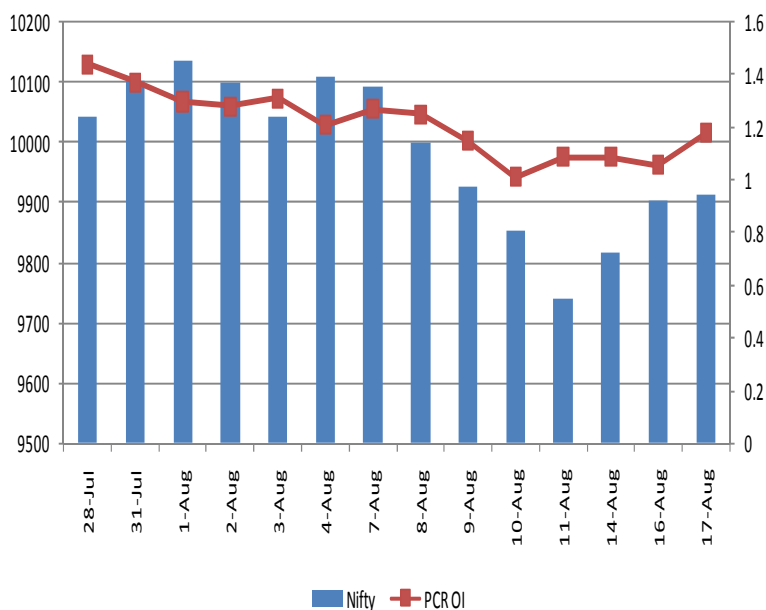
OI Concentration

PUT OPTION		CALL OPTION	
Strike Price	Open Interest	Strike Price	Open Interest
9700	4467000	10000	4468950
9800	3663600	10100	3260850
9500	3448200	10200	2749650
9900	3311175	9900	2241075
9600	3291975	10500	2139075

Highest Change in OI

PUT OPTION		CALL OPTION	
Strike Price	Change in OI	Strike Price	Change in OI
9700	439500	10000	961350
9600	262575	9900	685575
9000	247275	10100	674250
9400	112500	10200	442875
9100	79200	10050	312375

Nifty Future Price V/S PCR-OI



Technical Trend

Stock Analysis

Long Build-up	Long Unwinding	Short Build-up	Short Covering
BHARATFIN	APOLLOTYRE	ACC	COALINDIA
DHFL	BPCL	CIPLA	INDIGO
HAVELLS	GSFC	DIVISLAB	ONGC
MCDOWELL-N	HINDALCO	IOC	POWERGRID
PCJEWELLER	M&MFIN	RECLTD	TVSMOTOR
TATAELXSI	UJJIVAN	UPL	VEDL

STATISTICS

Highest Premium

SCRIPS	Premium %	Price change %
GMRINFRA	0.87	-2.8
JPASSOCIAT	0.84	-3.1
PCJEWELLER	0.72	1.4
ALBK	0.66	-0.9
MUTHOOTFIN	0.65	-2.7

Highest Discount

SCRIPS	Premium %	Price change %
PTC	-1.98	-1.8
NIITTECH	-1.78	-0.6
POWERGRID	-1.31	0.5
RELINFRA	-1.30	-2.7
NTPC	-1.16	0.0

TOP 5 VOLUME GAINER FOR THE SESSION

SCRIPS	CP AS ON 01/09/2017	CP AS ON 04/09/2017	Change (%)	Vol AS ON 01/08/2017	Vol AS ON 04/09/2017	Change (%)
MCDOWELL-N	2558.85	2585.45	1.04	1119	5791	418%
ARVIND	375.3	390.45	4.04	1871	6860	267%
JSWENERGY	67.25	67.05	-0.30	1429	5041	253%
IBULHSGFIN	1228.4	1238.55	0.83	1939	6266	223%
RAYMOND	816.7	862.2	5.57	3081	9294	202%

TOP 5 VOLUME LOSER FOR THE SESSION

SCRIPS	CP AS ON 01/09/2017	CP AS ON 04/09/2017	Change (%)	Vol AS ON 01/08/2017	Vol AS ON 04/09/2017	Change (%)
IBREALEST	247.8	238.2	-3.87	5927	1202	-80%
GRASIM	1170.75	1166.65	-0.35	12218	2670	-78%
DRREDDY	2221.25	2197.85	-1.05	28355	6908	-76%
EICHERMOT	31847.8	31784.2	-0.20	4505	1744	-61%
ESCORTS	651.3	645.8	-0.84	7454	3069	-59%

Technical Trend

TOP 10 OPEN INTEREST GAINER FOR THE SESSION

SCRIPS	CP AS ON 01/09/2017	CP AS ON 04/09/2017	Change (%)	OI AS ON 01/08/2017	OI AS ON 04/09/2017	Change (%)
JSWENERGY	67.25	67.05	-0.30	62330500	77010000	23.55
OIL	292.3	305.45	4.50	2225212	2692008	20.98
MCDOWELL-N	2558.85	2585.45	1.04	1627750	1851750	13.76
BERGEPAIN	251.6	245.3	-2.50	1966800	2186800	11.19
PAGEIND	18031.3	18141.75	0.61	22700	25200	11.01
IOC	451.2	431.5	-4.37	17020500	18855000	10.78
ACC	1825.45	1780.8	-2.45	1233600	1346800	9.18
TATAELXSI	1668.65	1737.3	4.11	942800	1027200	8.95
OFSS	3483.1	3600.5	3.37	54600	59400	8.79
CIPLA	572.15	564.95	-1.26	7263000	7891000	8.65

TOP 10 OPEN INTEREST LOSER FOR THE SESSION

SCRIPS	CP AS ON 01/09/2017	CP AS ON 04/09/2017	Change (%)	OI AS ON 01/08/2017	OI AS ON 04/09/2017	Change (%)
RELCAPITAL	858.3	820.1	-4.45	7564500	5257500	-30.50
INDUSINDBK	1694.8	1672.85	-1.30	4380600	4003800	-8.60
BAJAJ-AUTO	2926.3	2919.8	-0.22	1501250	1377500	-8.24
INDIGO	1257.6	1266.1	0.68	1363800	1257000	-7.83
COALINDIA	239.9	246.7	2.83	29733000	27553600	-7.33
GRASIM	1170.75	1166.65	-0.35	3005250	2807250	-6.59
SHREECEM	17899.9	17890.55	-0.05	23650	22400	-5.29
IBREALEST	247.8	238.2	-3.87	48030000	45550000	-5.16
MRPL	140.15	136.1	-2.89	8244000	7848000	-4.80
BALKRISIND	1657.35	1620.2	-2.24	578000	551600	-4.57

Technical Trend

Pivot Report– Nifty 50

Symbol	PClose	Support3	Support2	Support1	Pivot	Resist1	Resist2	Resist3
ACC	1771.1	1691.5	1728.4	1749.8	1786.7	1808.1	1845.0	1866.4
ADANIPTS	384.9	362.4	371.4	378.1	387.1	393.8	402.8	409.5
AMBUJACEM	276.8	265.2	270.1	273.5	278.4	281.8	286.7	290.1
ASIANPAINT	1197.1	1163.5	1177.8	1187.4	1201.7	1211.3	1225.6	1235.2
AUOPHARMA	748.7	706.2	724.2	736.4	754.5	766.7	784.7	796.9
AXISBANK	501.8	488.7	494.2	498.0	503.5	507.3	512.8	516.6
BAJAJ-AUTO	2915.2	2848.6	2869.3	2892.2	2912.9	2935.9	2956.6	2979.5
BANKBARODA	136.8	131.9	133.8	135.3	137.3	138.8	140.7	142.2
BHARTIARTL	416.4	400.5	407.1	411.8	418.4	423.0	429.6	434.3
BOSCHLTD	22468.8	21780.8	21942.9	22205.8	22367.9	22630.8	22792.9	23055.8
BPCL	531.2	505.1	516.3	523.7	534.9	542.3	553.5	560.9
CIPLA	561.7	534.4	546.0	553.8	565.4	573.3	584.9	592.7
COALINDIA	246.5	233.0	236.0	241.2	244.2	249.5	252.5	257.7
DRREDDY	2195.1	2103.6	2138.4	2166.8	2201.6	2229.9	2264.7	2293.1
EICHERMOT	31753.6	30987.9	31218.0	31485.8	31715.9	31983.7	32213.8	32481.6
GAIL	379.6	368.7	373.6	376.6	381.6	384.6	389.5	392.5
HCLTECH	860.6	836.9	846.9	853.8	863.8	870.7	880.7	887.6
HDFC	1755.4	1715.7	1728.9	1742.1	1755.3	1768.6	1781.8	1795.0
HDFCBANK	1750.9	1724.1	1735.1	1743.0	1754.0	1761.9	1772.9	1780.8
HERMOTOCO	3978.9	3809.7	3885.6	3932.2	4008.1	4054.8	4130.7	4177.3
HINDALCO	241.4	227.2	231.8	236.6	241.2	246.0	250.7	255.4
HINDUNILVR	1197.2	1167.9	1180.8	1189.0	1201.9	1210.1	1223.0	1231.2
IBULHSGFIN	1235.4	1179.0	1198.9	1217.1	1237.0	1255.2	1275.1	1293.3
ICICIBANK	297.1	288.9	291.7	294.4	297.2	299.9	302.7	305.4
INDUSINDBK	1669.5	1624.4	1641.5	1655.5	1672.5	1686.5	1703.6	1717.6
INFRATEL	377.8	370.1	372.8	375.3	377.9	380.4	383.1	385.6
INFY	900.2	861.2	877.3	888.8	904.9	916.4	932.5	944.0
IOC	429.1	405.6	416.6	422.8	433.8	440.0	451.0	457.2
ITC	283.1	280.3	281.1	282.1	283.0	284.0	284.8	285.8
KOTAKBANK	978.1	942.6	957.9	968.0	983.3	993.4	1008.7	1018.8
LT	1130.7	1105.2	1113.6	1122.1	1130.5	1139.1	1147.5	1156.0
LUPIN	997.6	964.9	975.0	986.3	996.4	1007.7	1017.8	1029.1
M&M	1328.3	1295.0	1309.6	1318.9	1333.5	1342.8	1357.4	1366.7
MARUTI	7821.5	7640.9	7698.8	7760.2	7818.1	7879.4	7937.3	7998.7
NTPC	168.3	164.7	165.8	167.0	168.1	169.4	170.5	171.7
ONGC	161.8	156.6	157.9	159.8	161.1	163.0	164.3	166.2
POWERGRID	217.6	207.4	210.1	213.9	216.6	220.3	223.0	226.8
RELIANCE	1613.4	1553.8	1574.8	1594.1	1615.1	1634.4	1655.4	1674.7
SBIN	277.8	273.0	274.7	276.2	277.9	279.4	281.1	282.6
SUNPHARMA	500.7	451.1	464.6	482.7	496.2	514.2	527.7	545.8
TATAMOTORS	383.4	361.7	371.1	377.3	386.7	392.8	402.2	408.4
TATAMTRDVR	219.8	208.3	213.5	216.6	221.8	225.0	230.2	233.3
TATAPOWER	78.5	75.4	76.7	77.6	78.9	79.7	81.0	81.9
TATASTEEL	646.6	631.3	636.4	641.5	646.6	651.7	656.8	661.9
TCS	2456.2	2419.5	2428.7	2442.5	2451.7	2465.5	2474.7	2488.5
TECHM	416.1	390.1	400.3	408.2	418.5	426.4	436.6	444.5
ULTRACEMCO	4000.4	3950.4	3971.7	3986.1	4007.4	4021.8	4043.1	4057.5
VEDL	315.8	299.2	303.8	309.8	314.4	320.4	325.0	331.0
WIPRO	297.3	293.7	294.7	296.0	297.0	298.3	299.3	300.6
YESBANK	1764.1	1698.3	1717.7	1740.9	1760.3	1783.5	1802.9	1826.1
ZEEL	521.6	510.2	514.3	518.0	522.1	525.8	529.9	533.6



BP WEALTH

Technical Research Desk

Tel: +91 22 61596173

Institutional Sales Desk

Tel: +91 22 61596403/04/05

Disclaimer Appendix

Analyst s holding in the Stock : Nil

Analyst s Certification:

We analysts and the authors of this report, hereby certify that all of the views expressed in this research report accurately reflect our personal views about any and all of the subject issuer s or securities. We also certify that no part of our compensation was, is, or will be directly or indirectly related to the specific recommendation s or view s in this report. Analysts aren't registered as research analysts by FINRA and might not be an associated person of the BP Equities Pvt. Ltd. Institutional Equities.

General Disclaimer

This report has been prepared by the research department of BP EQUITIES Pvt. Ltd, is for information purposes only. This report is not construed as an offer to sell or the solicitation of an offer to buy or sell any security in any jurisdiction where such an offer or solicitation would be illegal.

BP EQUITIES Pvt. Ltd have exercised due diligence in checking the correctness and authenticity of the information contained herein, so far as it relates to current and historical information, but do not guarantee its accuracy or completeness. The opinions expressed are our current opinions as of the date appearing in the material and may be subject to change from time to time. Prospective investors are cautioned that any forward looking statement are not predictions and are subject to change without prior notice.

Recipients of this material should rely on their own investigations and take their own professional advice. BP EQUITIES Pvt. Ltd or any of its affiliates or employees shall not be in any way responsible for any loss or damage that may arise to any person from any inadvertent error in the information contained in this report. BP EQUITIES Pvt. Ltd. or any of its affiliates or employees do not provide, at any time, any express or implied warranty of any kind, regarding any matter pertaining to this report, including without limitation the implied warranties of merchantability, fitness for a particular purpose, and non-infringement. The recipients of this report should rely on their own investigations.

BP EQUITIES Pvt. Ltd and/or its affiliates and/or employees may have interests/ positions, financial or otherwise in the securities mentioned in this report. Opinions expressed are our current opinions as of the date appearing on this material only. While we endeavor to update on a reasonable basis the information discussed in this material, there may be regulatory, compliance, or other reasons that prevent us from doing so.

This report is not directed to or intended for display, downloading, printing, reproducing or for distribution to or use by any person in any locality, state and country or other jurisdiction where such distribution, publication or use would be contrary to the law or regulation or would subject to BP EQUITIES Pvt. Ltd or any of its affiliates to any registration or licensing requirement within such jurisdiction.

Corporate Office:

4th floor,
Rustom Bldg,
29, Veer Nariman Road, Fort,
Mumbai-400001
Phone- +91 22 6159 6464
Fax-+91 22 6159 6160
Website- www.bpwealth.com

Registered Office:

24/26, 1st Floor, Cama Building,
Dalal street, Fort,
Mumbai-400001
BP Equities Pvt. Ltd.
CIN No: U67120MH1997PTC107392