

## NIFTY FUT : IMMEDIATE RESISTANCE AT 9930



Source: Falcon, BP Equities Research

Nifty futures closed higher by 0.56% at 9915. Index has formed Spinning top a bullish reversal candlestick pattern near previous trough which suggests the recent trough to act as strong support for short term trend. RSI has formed positive reversal with price which is a bullish signal for short term trend. Going ahead till index has immediate resistance at 9930, for index to continue its up move it needs to sustain above this level which if it does will open the way for 10000 while support comes at 9880-9820.

Intraday Nifty Future                      Resistance— 9930/10000/10040      Support—9880/9820/9780

## BANK NIFTY FUT : IMMEDIATE RESISTANCE AT 24200



Source: Falcon, BP Equities Research

Bank Nifty futures closed 0.04% higher at 24113. Index is facing resistance around 24200 for past three sessions, which suggests this level to act as immediate resistance for short term trend. Earlier Index has violated up sloping trend line which is drawn connecting the previous troughs which is a bearish signal for short term trend. Going ahead index has immediate resistance at 24200, for index to continue its pullback it needs to sustain above this level which if it does will open the way for 24360-24550 while support comes at 23800.

Intraday Bank Nifty Future                      Resistance—24200/24360/24550      Support—24000/23800/23600

## Technical Trend

### INTRADAY TRADER'S PICKS

Sr.No.	STOCK	CLOSE	S1	S2	S3	R1	R2	R3	RECOMMENDATION
1	COROMANDEL	449.80	447	441	436	459	465	470	<b>BUY ABOVE 453</b>
2	EROSMEDIA	222.05	218	214	210	230	234	238	<b>BUY ABOVE 224</b>
3	FCL	32.85	32.3	31.8	31.3	33.7	34.2	34.7	<b>BUY ABOVE 33</b>
4	JKIL	212.95	209	206	203	221	224	227	<b>BUY ABOVE 215</b>
5	MRPL	125.2	121	118	115	128	131	134	<b>SELL BELOW 124.5</b>

## Technical Trend

### DERIVATIVES

#### INDICES SNAPSHOT

SCRIPS	CP AS ON 03/10/2017	CP AS ON 04/10/2017	Change (%)	OI AS ON 03/10/2017	OI AS ON 04/10/2017	Change (%)
BANKNIFTY	24111.8	24145.4	0.14	2388040	2376920	-0.47
NIFTY	9868.45	9930.45	0.63	22258275	23555100	5.83
NIFTYIT	10554	10554	0.00	31500	32300	2.54

#### Derivative Highlights

- ⇒ Nifty Future closed with a premium of 29 points.
- ⇒ Nifty Future Open Interest increased by 5.83%. BankNifty Future Open Interest decreased by 0.47%.
- ⇒ Nifty PCR - OI increased from 1.24 to 1.29, Nifty PCR - Vol increased from 0.97 to 1.02
- ⇒ FII Sold Rs 632.14 crore while DII Bought Rs. 584.88 crore in the Cash Segment. FII Bought Rs. 801.80 crore in Index Futures and Sold Rs.187.84 crore in index options, while in Future they Bought Rs. 1169.67 crore and Bought Rs 49 crore in stock options
- ⇒ Among Index Option space, Highest Open Interest concentration was seen in 9700 & 9800 Strike price among the PE options. Where as among CE Options Highest Open Interest Concentration was seen in 10000 & 9900 Strike price.
- ⇒ Highest Open Interest Build Up among the PE options was seen in 9800 & 9700 Strike price. Among CE options highest build up was seen in 9950 & 10050 Strike price.

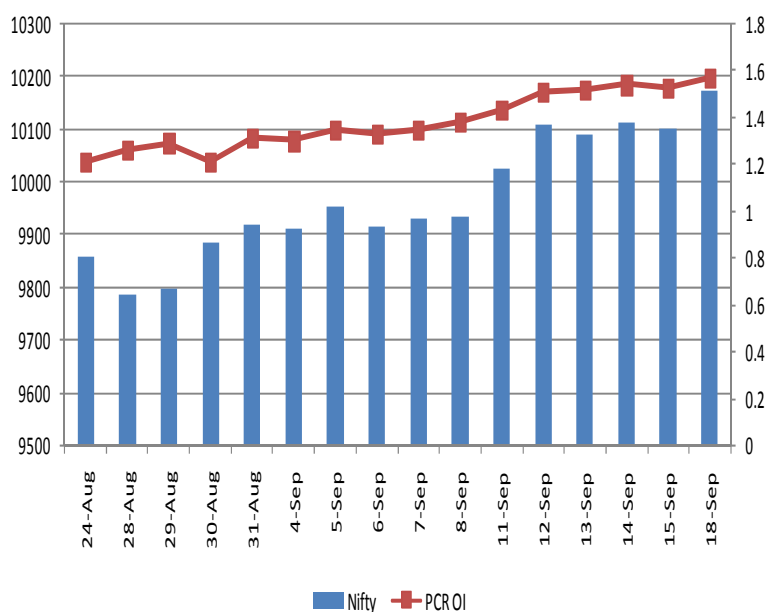
#### OI Concentration

PUT OPTION		CALL OPTION	
Strike Price	Open Interest	Strike Price	Open Interest
9700	3978300	10000	4656300
9800	3546225	9900	3397725
9500	3003750	10100	2808675
9600	2892450	10200	2557650
9900	2084925	9800	2095275

#### Highest Change in OI

PUT OPTION		CALL OPTION	
Strike Price	Change in OI	Strike Price	Change in OI
9800	767400	9950	80925
9700	455325	10050	57450
9900	383400	10300	43125
9600	153825	11000	42900
9000	137700	10500	40650

#### Nifty Future Price V/S PCR-OI



## Technical Trend

### Stock Analysis

Long Build-up	Long Unwinding	Short Build-up	Short Covering
AUROPHARMA	HEROMOTOCO	APOLLOTYRE	AJANTPHARM
BPCL	OIL	BHARTIARTL	BHARATFORG
CENTURYTEX		DISHTV	DRREDDY
HAVELLS		ICICIBANK	IDFC
LUPIN		MOTHERSUMI	POWERGRID
WOCKPHARMA		SRF	SUZLON

### STATISTICS

#### Highest Premium

SCRIPS	Premium %	Price change %
ASHOKLEY	0.90	0.04
JPASSOCIAT	0.79	3.85
NHPC	0.72	-0.36
BEML	0.67	4.31
IFCI	0.66	0.44

#### Highest Discount

SCRIPS	Premium %	Price change %
PETRONET	-0.30	1.33
BPCL	-0.15	1.52
CONCOR	-0.08	0.22
HDFCBANK	-0.07	-0.66
HCLTECH	-0.04	0.46

#### TOP 5 VOLUME GAINER FOR THE SESSION

SCRIPS	CP AS ON 03/10/2017	CP AS ON 04/10/2017	Change (%)	OI AS ON 03/10/2017	OI AS ON 04/10/2017	Change (%)
BATAINDIA	696.75	733.55	5.28	839	5124	5.11
SOUTHBANK	28.05	29.55	5.35	730	2778	2.81
CADILAHC	476.1	495.3	4.03	564	2074	2.68
GSFC	128.1	134.05	4.64	846	3079	2.64
BEML	1608.55	1679.85	4.43	2285	7719	2.38

#### TOP 5 VOLUME LOSER FOR THE SESSION

SCRIPS	CP AS ON 03/10/2017	CP AS ON 04/10/2017	Change (%)	OI AS ON 03/10/2017	OI AS ON 04/10/2017	Change (%)
ICICIPRULI	414.5	412.95	-0.37	4584	867	-0.81
JSWENERGY	75.5	76.75	1.66	2534	583	-0.77
ESCORTS	660.7	660.2	-0.08	4513	1372	-0.70
BAJAJFINSV	5332.1	5289.1	-0.81	3559	1173	-0.67
ASHOKLEY	122.8	123.6	0.65	8534	2903	-0.66

## Technical Trend

### TOP 10 OPEN INTEREST GAINER FOR THE SESSION

SCRIPS	CP AS ON 03/10/2017	CP AS ON 04/10/2017	Change (%)	OI AS ON 03/10/2017	OI AS ON 04/10/2017	Change (%)
TORNTPHARM	1251.55	1258.7	0.57	227200	284800	25.35
BATAINDIA	696.75	733.55	5.28	1840300	2275900	23.67
PAGEIND	18427	18698.35	1.47	23150	27700	19.65
APOLLOTYRE	244.45	239.95	-1.84	11235000	13209000	17.57
MOTHERSUMI	340.25	336.4	-1.13	10376250	11857500	14.28
DISHTV	74.05	71.15	-3.92	18312000	20440000	11.62
INFRATEL	409.65	418.5	2.16	7949200	8714200	9.62
JPASSOCIAT	18.3	19.05	4.10	187272000	204612000	9.26
HDFC	1766.7	1772.4	0.32	10749000	11654000	8.42
IGL	1474.2	1459.05	-1.03	994950	1073050	7.85

### TOP 10 OPEN INTEREST LOSER FOR THE SESSION

SCRIPS	CP AS ON 03/10/2017	CP AS ON 04/10/2017	Change (%)	OI AS ON 03/10/2017	OI AS ON 04/10/2017	Change (%)
BHARATFORG	617.65	630.85	2.14	7707600	7375200	-4.31
INDIACEM	183.15	182.15	-0.55	25340000	24255000	-4.28
HEROMOTOCO	3813.55	3800.75	-0.34	1838200	1764800	-3.99
JINDALSTEL	144.35	145.5	0.80	34839000	33552000	-3.69
POWERGRID	206.95	209.3	1.14	16268000	15760000	-3.12
RECLTD	153.05	155	1.27	43104000	41886000	-2.83
ICICIPRULI	414.5	412.95	-0.37	5304000	5158400	-2.75
TORNTPOWER	212.2	213.15	0.45	6753000	6582000	-2.53
INDIANB	263.2	267.65	1.69	3756000	3662000	-2.50
VOLTAS	525	522.25	-0.52	2826000	2762000	-2.26

## Technical Trend

### Pivot Report– Nifty 50

Symbol	PClose	Support3	Support2	Support1	Pivot	Resist1	Resist2	Resist3
ADANIPTS	383.7	366.6	370.8	377.3	<b>381.5</b>	388.0	392.2	398.7
AMBUJACEM	268.4	260.1	263.1	265.7	<b>268.7</b>	271.4	274.4	277.0
ASIANPAINT	1148.8	1111.7	1123.6	1136.2	<b>1148.1</b>	1160.7	1172.6	1185.2
AUOPHARMA	707.0	680.6	687.7	697.3	<b>704.5</b>	714.1	721.2	730.8
AXISBANK	509.7	490.6	497.4	503.5	<b>510.3</b>	516.4	523.2	529.3
BAJAJ-AUTO	3162.2	3067.0	3106.3	3134.3	<b>3173.6</b>	3201.6	3240.9	3268.9
BAJFINANCE	1867.8	1800.0	1815.9	1841.8	<b>1857.7</b>	1883.6	1899.5	1925.4
BHARTIARTL	384.7	370.9	377.0	380.8	<b>386.9</b>	390.7	396.8	400.6
BOSCHLTD	20397.8	19601.9	19975.9	20186.9	<b>20560.9</b>	20771.9	21145.9	21356.9
BPCL	478.9	455.3	461.2	470.0	<b>475.9</b>	484.7	490.6	499.4
CIPLA	578.9	554.8	565.1	572.0	<b>582.4</b>	589.3	599.6	606.5
COALINDIA	272.0	264.2	266.7	269.3	<b>271.8</b>	274.5	277.0	279.6
DRREDDY	2335.6	2204.5	2262.5	2299.0	<b>2357.0</b>	2393.6	2451.6	2488.1
EICHERMOT	31147.3	29707.5	30323.7	30735.5	<b>31351.7</b>	31763.5	32379.7	32791.5
GAIL	435.4	409.3	415.6	425.5	<b>431.9</b>	441.8	448.1	458.0
HCLTECH	882.6	866.4	871.6	877.1	<b>882.3</b>	887.8	893.0	898.5
HDFC	1761.6	1707.3	1720.7	1741.2	<b>1754.6</b>	1775.0	1788.4	1808.9
HDFCBANK	1808.9	1773.1	1785.1	1797.0	<b>1809.0</b>	1820.9	1832.9	1844.8
HEROMOTOCO	3806.3	3733.8	3763.8	3785.0	<b>3815.0</b>	3836.2	3866.2	3887.4
HINDALCO	241.6	231.8	235.0	238.3	<b>241.5</b>	244.8	248.0	251.3
HINDPETRO	434.6	408.3	415.0	424.8	<b>431.6</b>	441.4	448.1	457.9
HINDUNILVR	1186.4	1153.4	1162.2	1174.3	<b>1183.1</b>	1195.1	1203.9	1216.0
IBULHSGFIN	1234.4	1184.0	1198.9	1216.6	<b>1231.6</b>	1249.3	1264.2	1281.9
ICICIBANK	278.4	269.9	272.5	275.5	<b>278.1</b>	281.0	283.6	286.6
INDUSINDBK	1693.0	1639.8	1653.9	1673.4	<b>1687.5</b>	1707.0	1721.1	1740.6
INFRATEL	408.5	390.4	394.7	401.6	<b>405.9</b>	412.8	417.1	424.0
INFY	903.6	889.0	895.3	899.4	<b>905.7</b>	909.8	916.1	920.2
IOC	406.6	386.8	392.5	399.5	<b>405.2</b>	412.2	417.9	424.9
ITC	261.4	254.8	256.6	259.0	<b>260.9</b>	263.3	265.1	267.5
KOTAKBANK	1006.6	983.0	989.1	997.8	<b>1003.9</b>	1012.7	1018.8	1027.5
LT	1134.9	1093.0	1110.5	1122.7	<b>1140.2</b>	1152.4	1169.9	1182.1
LUPIN	1021.4	1005.3	1009.9	1015.6	<b>1020.2</b>	1025.9	1030.5	1036.2
M&M	1264.3	1208.9	1230.8	1247.6	<b>1269.5</b>	1286.3	1308.2	1325.0
MARUTI	7888.3	7591.8	7723.4	7805.9	<b>7937.5</b>	8019.9	8151.5	8234.0
NTPC	168.4	166.3	167.0	167.7	<b>168.3</b>	169.0	169.7	170.4
ONGC	170.7	165.0	167.5	169.1	<b>171.6</b>	173.1	175.6	177.2
POWERGRID	206.2	196.9	201.2	203.7	<b>208.0</b>	210.4	214.7	217.2
RELIANCE	798.4	769.4	777.4	787.9	<b>795.9</b>	806.4	814.4	824.9
SBIN	251.3	243.3	247.0	249.1	<b>252.8</b>	254.9	258.6	260.7
SUNPHARMA	502.7	489.2	494.7	498.7	<b>504.1</b>	508.1	513.6	517.6
TATAMOTORS	416.0	398.3	406.7	411.3	<b>419.7</b>	424.3	432.7	437.3
TATASTEEL	660.8	646.8	651.7	656.2	<b>661.1</b>	665.6	670.5	675.0
TCS	2448.5	2405.0	2416.0	2432.2	<b>2443.3</b>	2459.5	2470.5	2486.7
TECHM	463.3	446.5	451.2	457.3	<b>462.0</b>	468.1	472.8	478.9
ULTRACEMCO	3895.0	3800.0	3839.0	3867.0	<b>3906.0</b>	3934.0	3973.0	4001.0
UPL	796.0	748.5	759.0	777.5	<b>788.0</b>	806.5	817.0	835.5
VEDL	318.3	312.2	314.2	316.2	<b>318.2</b>	320.2	322.2	324.2
WIPRO	283.0	274.9	277.6	280.3	<b>283.0</b>	285.7	288.4	291.1
YESBANK	351.1	340.0	343.8	347.4	<b>351.2</b>	354.8	358.6	362.2
ZEEL	522.0	515.3	517.7	519.8	<b>522.2</b>	524.3	526.7	528.8



BP WEALTH

Technical Research Desk

Tel: +91 22 61596173

Institutional Sales Desk

Tel: +91 22 61596403/04/05

## Disclaimer Appendix

### Analyst s holding in the Stock : Nil

#### Analyst s Certification:

We analysts and the authors of this report, hereby certify that all of the views expressed in this research report accurately reflect our personal views about any and all of the subject issuer s or securities. We also certify that no part of our compensation was, is, or will be directly or indirectly related to the specific recommendation s or view s in this report. Analysts aren't registered as research analysts by FINRA and might not be an associated person of the BP Equities Pvt. Ltd. Institutional Equities.

#### General Disclaimer

This report has been prepared by the research department of BP EQUITIES Pvt. Ltd, is for information purposes only. This report is not construed as an offer to sell or the solicitation of an offer to buy or sell any security in any jurisdiction where such an offer or solicitation would be illegal.

BP EQUITIES Pvt. Ltd have exercised due diligence in checking the correctness and authenticity of the information contained herein, so far as it relates to current and historical information, but do not guarantee its accuracy or completeness. The opinions expressed are our current opinions as of the date appearing in the material and may be subject to change from time to time. Prospective investors are cautioned that any forward looking statement are not predictions and are subject to change without prior notice.

Recipients of this material should rely on their own investigations and take their own professional advice. BP EQUITIES Pvt. Ltd or any of its affiliates or employees shall not be in any way responsible for any loss or damage that may arise to any person from any inadvertent error in the information contained in this report. BP EQUITIES Pvt. Ltd. or any of its affiliates or employees do not provide, at any time, any express or implied warranty of any kind, regarding any matter pertaining to this report, including without limitation the implied warranties of merchantability, fitness for a particular purpose, and non-infringement. The recipients of this report should rely on their own investigations.

BP EQUITIES Pvt. Ltd and/or its affiliates and/or employees may have interests/ positions, financial or otherwise in the securities mentioned in this report. Opinions expressed are our current opinions as of the date appearing on this material only. While we endeavor to update on a reasonable basis the information discussed in this material, there may be regulatory, compliance, or other reasons that prevent us from doing so.

This report is not directed to or intended for display, downloading, printing, reproducing or for distribution to or use by any person in any locality, state and country or other jurisdiction where such distribution, publication or use would be contrary to the law or regulation or would subject to BP EQUITIES Pvt. Ltd or any of its affiliates to any registration or licensing requirement within such jurisdiction.

#### Corporate Office:

4th floor,  
Rustom Bldg,  
29, Veer Nariman Road, Fort,  
Mumbai-400001  
Phone- +91 22 6159 6464  
Fax-+91 22 6159 6160  
Website- [www.bpwealth.com](http://www.bpwealth.com)

#### Registered Office:

24/26, 1st Floor, Cama Building,  
Dalal street, Fort,  
Mumbai-400001  
BP Equities Pvt. Ltd.  
CIN No: U67120MH1997PTC107392