

## NIFTY FUT : IMMEDIATE RESISTANCE AT 9970



Nifty futures closed lower by 0.40% at 9952. Index has formed bearish engulfing candlestick which suggests the recent peak to act as strong resistance. Index has given breakout from a small triangle but is failing to sustain above the upper trend line. Index earlier had reversed after taking support at lower trend line of the broadening wedge wedge this trend line is expected to act as strong support for short term trend. Going ahead post gap down opening index has immediate support at 9900, a sustenance below this level will continue the down move towards 9860-9820 while resistance comes at 9950-10000.

Intraday Nifty Future

Resistance—9970/10020/10050

Support—9920/9880/9840

## BANK NIFTY FUT : IMMEDIATE RESISTANCE AT 24400



Bank Nifty futures closed 0.38% higher at 24328. Index has formed bearish engulfing candlestick which suggests the recent peak to act as strong resistance. Index is failing to sustain above the upper trend line of the small triangle. Going ahead post gap down opening index has immediate support at 24300, a sustenance below this level will continue down move towards 24150-24000 while resistance comes at 24400.

Intraday Bank Nifty Future

Resistance—24400/24450/24550

Support—24150/24000/23900

## Technical Trend

### DERIVATIVES

#### INDICES SNAPSHOT

SCRIPS	CP AS ON 04/09/2017	CP AS ON 05/09/2017	Change (%)	OI AS ON 04/08/2017	OI AS ON 05/09/2017	Change (%)
BANKNIFTY	24289.65	24388.1	0.41	1924320	1923480	-0.04
NIFTY	9927.65	9971.6	0.44	18062175	18799200	4.08
NIFTYIT	10455	10511	0.54	30800	30850	0.16

### Derivative Highlights

- ⇒ Nifty Future closed with a premium of 20 points.
- ⇒ Nifty Future Open Interest increased by 4.08%. BankNifty Future Open Interest decreased by 0.04%.
- ⇒ Nifty PCR - OI increased from 1.30 to 1.35, Nifty PCR - Vol decreased to 1.27 to 1.12
- ⇒ FII Sold Rs 379.16 crore while DII Bought Rs. 474.36 crore in the Cash Segment. FII Bought Rs. 80.03 crore in Index Futures and Bought Rs. 1130.92 crore in index options, while in Future they Bought Rs. 33.31 crore and Bought Rs 36.10 crore in stock options
- ⇒ Among Index Option space, Highest Open Interest concentration was seen in 9700 & 9800 Strike price among the PE options. Where as among CE Options Highest Open Interest Concentration was seen in 10000 & 10100 Strike price.
- ⇒ Highest Open Interest Build Up among the PE options was seen in 9700 & 9600 Strike price. Among CE options highest build up was seen in 10000 & 9900 Strike price.

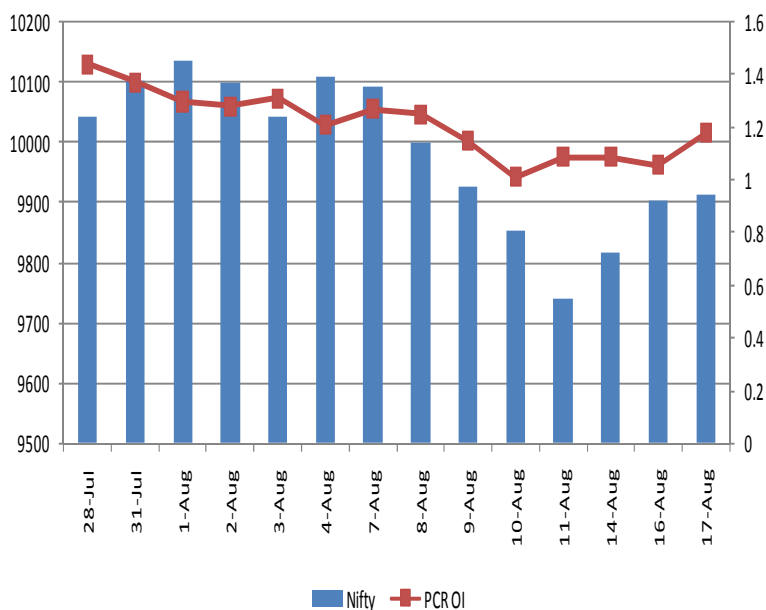
#### OI Concentration

PUT OPTION		CALL OPTION	
Strike Price	Open Interest	Strike Price	Open Interest
9700	4467000	10000	4468950
9800	3663600	10100	3260850
9500	3448200	10200	2749650
9900	3311175	9900	2241075
9600	3291975	10500	2139075

#### Highest Change in OI

PUT OPTION		CALL OPTION	
Strike Price	Change in OI	Strike Price	Change in OI
9700	439500	10000	961350
9600	262575	9900	685575
9000	247275	10100	674250
9400	112500	10200	442875
9100	79200	10050	312375

#### Nifty Future Price V/S PCR-OI



## Technical Trend

## Stock Analysis

Long Build-up	Long Unwinding	Short Build-up	Short Covering
ACC	BHARTIARTL	BALRAMCHIN	CAPF
BIOCON		GMRINFRA	COALINDIA
CEATLTD		INFRATEL	GODFRYPHLP
PCJEWELLER		M&M	JETAIRWAYS
TITAN		TATAMTRDVR	PETRONET
VGUARD		WIPRO	STAR

## STATISTICS

### Highest Premium

SCRIPS	Premium %	Price change %
JUSTDIAL	2.57	-0.9
IFCI	0.82	4.1
ADANIPOWER	0.81	0.7
ICIL	0.69	1.3
HCC	0.69	1.5

### Highest Discount

SCRIPS	Premium %	Price change %
PTC	-2.02	2.0
NIITTECH	-1.79	0.9
RELINFRA	-1.22	1.3
RECLTD	-1.07	-0.3
POWERGRID	-1.04	-0.6

### TOP 5 VOLUME GAINER FOR THE SESSION

SCRIPS	CP AS ON 04/09/2017	CP AS ON 05/09/2017	Change (%)	Vol AS ON 04/08/2017	Vol AS ON 05/09/2017	Change (%)
TITAN	615.2	642	4.36	1572	7985	408%
JISLJALEQS	96.7	103.9	7.45	1263	4694	272%
IGL	1267.45	1317.1	3.92	1431	4571	219%
GSFC	140.45	148.65	5.84	1236	3756	204%
BHARTIARTL	417.85	407.95	-2.37	2291	6769	195%

### TOP 5 VOLUME LOSER FOR THE SESSION

SCRIPS	CP AS ON 04/09/2017	CP AS ON 05/09/2017	Change (%)	Vol AS ON 04/08/2017	Vol AS ON 05/09/2017	Change (%)
JSWENERGY	67.05	67.35	0.45	5041	1012	-80%
TV18BRDCST	41.65	41.3	-0.84	4230	1376	-67%
MCDOWELL-N	2585.45	2570.3	-0.59	5791	2035	-65%
RAYMOND	862.2	858.4	-0.44	9294	3389	-64%
ASHOKLEY	113.75	113.65	-0.09	8036	3052	-62%

## Technical Trend

### TOP 10 OPEN INTEREST GAINER FOR THE SESSION

SCRIPS	CP AS ON 04/09/2017	CP AS ON 05/09/2017	Change (%)	OI AS ON 04/08/2017	OI AS ON 05/09/2017	Change (%)
RAMCOCEM	700.4	728.35	3.99	472000	742400	57.29
VGUARD	184.45	192.15	4.17	1677000	2136000	27.37
L&TFH	196.55	205.95	4.78	15732000	18337500	16.56
HEXAWARE	269.65	276.1	2.39	2013000	2337000	16.10
BAJFINANCE	1806.8	1799.7	-0.39	3912000	4479000	14.49
OFSS	3600.5	3521.45	-2.20	59400	67050	12.88
CUMMINSIND	911.7	902.3	-1.03	629400	705000	12.01
CEATLTD	1710.65	1741.95	1.83	1424500	1582700	11.11
TITAN	615.2	642	4.36	3879000	4273500	10.17
NIITTECH	501.3	505.65	0.87	1170000	1288500	10.13

### TOP 10 OPEN INTEREST LOSER FOR THE SESSION

SCRIPS	CP AS ON 04/09/2017	CP AS ON 05/09/2017	Change (%)	OI AS ON 04/08/2017	OI AS ON 05/09/2017	Change (%)
RELCAPITAL	820.1	743.95	-9.29	5257500	4482000	-14.75
ICICIPRULI	441.4	447.05	1.28	4751500	4516200	-4.95
JSWENERGY	67.05	67.35	0.45	77010000	73474000	-4.59
INDIGO	1266.1	1258.05	-0.64	1257000	1204200	-4.20
TORNTPHARM	1225.2	1228.45	0.27	228800	219600	-4.02
NESTLEIND	6905.3	7057.8	2.21	128100	123800	-3.36
CHENNPETRO	453.2	455.8	0.57	2034000	1968000	-3.24
CANBK	336.7	339.25	0.76	8690712	8471748	-2.52
SUNTV	808.9	829.7	2.57	7363000	7181000	-2.47
CAPF	729.65	745.2	2.13	3431200	3352800	-2.28

## Technical Trend

### Pivot Report– Nifty 50

Symbol	PClose	Support3	Support2	Support1	Pivot	Resist1	Resist2	Resist3
ACC	1805.0	1720.0	1739.2	1772.1	<b>1791.3</b>	1824.2	1843.4	1876.3
ADANIPTS	390.3	373.1	377.6	384.0	<b>388.5</b>	394.8	399.3	405.7
AMBUJACEM	282.5	268.4	271.5	277.0	<b>280.0</b>	285.5	288.6	294.1
ASIANPAINT	1206.4	1174.2	1187.3	1196.8	<b>1209.9</b>	1219.5	1232.6	1242.1
AUOPHARMA	744.3	724.8	733.0	738.6	<b>746.8</b>	752.5	760.7	766.3
AXISBANK	503.4	495.9	498.7	501.1	<b>503.9</b>	506.2	509.0	511.4
BAJAJ-AUTO	2950.7	2849.3	2877.2	2913.9	<b>2941.8</b>	2978.6	3006.5	3043.2
BANKBARODA	138.4	133.6	134.8	136.6	<b>137.8</b>	139.6	140.8	142.6
BHARTIARTL	406.5	381.0	389.4	398.0	<b>406.4</b>	415.0	423.4	432.0
BOSCHLTD	22236.2	21561.1	21861.7	22048.9	<b>22349.5</b>	22536.7	22837.3	23024.5
BPCL	539.3	516.7	522.1	530.7	<b>536.1</b>	544.7	550.1	558.7
CIPLA	559.6	546.8	551.8	555.7	<b>560.8</b>	564.7	569.7	573.6
COALINDIA	253.9	237.3	241.0	247.4	<b>251.1</b>	257.5	261.2	267.6
DRREDDY	2209.2	2151.5	2166.7	2187.9	<b>2203.1</b>	2224.4	2239.6	2260.8
EICHERMOT	31935.3	31290.2	31445.1	31690.2	<b>31845.1</b>	32090.2	32245.1	32490.2
GAIL	378.7	369.6	373.7	376.2	<b>380.2</b>	382.7	386.8	389.3
HCLTECH	859.9	837.3	842.8	851.4	<b>856.9</b>	865.5	871.0	879.6
HDFC	1767.3	1728.7	1738.4	1752.8	<b>1762.5</b>	1777.0	1786.7	1801.1
HDFCBANK	1755.4	1735.4	1743.2	1749.3	<b>1757.1</b>	1763.2	1771.0	1777.1
HEROMOTOCO	3970.5	3903.6	3931.8	3951.1	<b>3979.3</b>	3998.6	4026.8	4046.1
HINDALCO	241.9	235.8	238.0	240.0	<b>242.2</b>	244.1	246.3	248.3
HINDUNILVR	1205.2	1175.3	1183.8	1194.5	<b>1203.0</b>	1213.7	1222.2	1232.9
IBULHSGFIN	1240.9	1196.6	1207.1	1224.0	<b>1234.5</b>	1251.4	1261.9	1278.8
ICICIBANK	297.6	294.2	295.5	296.5	<b>297.8</b>	298.8	300.1	301.1
INDUSINDBK	1684.8	1646.7	1655.9	1670.3	<b>1679.5</b>	1693.9	1703.1	1717.5
INFRATEL	371.9	355.9	362.1	367.0	<b>373.1</b>	378.0	384.2	389.1
INFY	901.9	890.0	893.6	897.8	<b>901.4</b>	905.5	909.1	913.3
IOC	431.9	419.0	423.6	427.7	<b>432.3</b>	436.4	441.0	445.1
ITC	282.9	279.4	280.5	281.7	<b>282.8</b>	284.0	285.1	286.3
KOTAKBANK	988.4	964.0	969.9	979.2	<b>985.1</b>	994.3	1000.2	1009.5
LT	1126.7	1102.9	1112.6	1119.6	<b>1129.3</b>	1136.3	1146.0	1153.0
LUPIN	992.7	965.1	975.6	984.1	<b>994.6</b>	1003.1	1013.6	1022.1
M&M	1324.7	1296.9	1305.2	1314.9	<b>1323.2</b>	1332.9	1341.2	1350.9
MARUTI	7817.2	7738.5	7769.8	7793.5	<b>7824.7</b>	7848.4	7879.7	7903.4
NTPC	169.5	165.9	166.7	168.1	<b>168.9</b>	170.3	171.1	172.5
ONGC	162.8	159.3	160.4	161.6	<b>162.6</b>	163.8	164.9	166.1
POWERGRID	216.2	213.8	214.9	215.5	<b>216.6</b>	217.2	218.3	218.9
RELIANCE	1632.6	1610.4	1615.7	1624.2	<b>1629.5</b>	1638.0	1643.3	1651.8
SBIN	276.6	271.6	273.8	275.2	<b>277.3</b>	278.7	280.9	282.3
SUNPHARMA	491.9	472.0	481.1	486.5	<b>495.5</b>	500.9	510.0	515.4
TATAMOTORS	388.2	378.4	380.9	384.5	<b>387.0</b>	390.6	393.1	396.7
TATAMTRDVR	218.9	213.3	215.5	217.2	<b>219.3</b>	221.0	223.2	224.9
TATAPOWER	78.4	76.9	77.5	77.9	<b>78.5</b>	78.9	79.5	79.9
TATASTEEL	652.1	640.9	644.1	648.1	<b>651.3</b>	655.3	658.5	662.5
TCS	2484.4	2398.0	2417.5	2450.9	<b>2470.5</b>	2503.9	2523.4	2556.8
TECHM	427.9	407.9	413.0	420.4	<b>425.5</b>	433.0	438.1	445.5
ULTRACEMCO	4097.9	3928.6	3966.8	4032.3	<b>4070.6</b>	4136.1	4174.3	4239.8
VEDL	318.1	310.5	312.8	315.5	<b>317.8</b>	320.5	322.8	325.5
WIPRO	297.3	294.3	295.4	296.3	<b>297.4</b>	298.3	299.4	300.3
YESBANK	1778.3	1743.4	1754.2	1766.2	<b>1777.0</b>	1789.0	1799.8	1811.8
ZEEL	520.7	513.2	516.4	518.6	<b>521.8</b>	523.9	527.1	529.3



BP WEALTH

Technical Research Desk

Tel: +91 22 61596173

Institutional Sales Desk

Tel: +91 22 61596403/04/05

**Disclaimer Appendix****Analyst s holding in the Stock : Nil****Analyst s Certification:**

We analysts and the authors of this report, hereby certify that all of the views expressed in this research report accurately reflect our personal views about any and all of the subject issuer s or securities. We also certify that no part of our compensation was, is, or will be directly or indirectly related to the specific recommendation s or view s in this report. Analysts aren't registered as research analysts by FINRA and might not be an associated person of the BP Equities Pvt. Ltd. Institutional Equities.

**General Disclaimer**

This report has been prepared by the research department of BP EQUITIES Pvt. Ltd, is for information purposes only. This report is not construed as an offer to sell or the solicitation of an offer to buy or sell any security in any jurisdiction where such an offer or solicitation would be illegal.

BP EQUITIES Pvt. Ltd have exercised due diligence in checking the correctness and authenticity of the information contained herein, so far as it relates to current and historical information, but do not guarantee its accuracy or completeness. The opinions expressed are our current opinions as of the date appearing in the material and may be subject to change from time to time. Prospective investors are cautioned that any forward looking statement are not predictions and are subject to change without prior notice.

Recipients of this material should rely on their own investigations and take their own professional advice. BP EQUITIES Pvt. Ltd or any of its affiliates or employees shall not be in any way responsible for any loss or damage that may arise to any person from any inadvertent error in the information contained in this report. BP EQUITIES Pvt. Ltd. or any of its affiliates or employees do not provide, at any time, any express or implied warranty of any kind, regarding any matter pertaining to this report, including without limitation the implied warranties of merchantability, fitness for a particular purpose, and non-infringement. The recipients of this report should rely on their own investigations.

BP EQUITIES Pvt. Ltd and/or its affiliates and/or employees may have interests/ positions, financial or otherwise in the securities mentioned in this report. Opinions expressed are our current opinions as of the date appearing on this material only. While we endeavor to update on a reasonable basis the information discussed in this material, there may be regulatory, compliance, or other reasons that prevent us from doing so.

This report is not directed to or intended for display, downloading, printing, reproducing or for distribution to or use by any person in any locality, state and country or other jurisdiction where such distribution, publication or use would be contrary to the law or regulation or would subject to BP EQUITIES Pvt. Ltd or any of its affiliates to any registration or licensing requirement within such jurisdiction.

**Corporate Office:**

4th floor,  
Rustom Bldg,  
29, Veer Nariman Road, Fort,  
Mumbai-400001  
Phone- +91 22 6159 6464  
Fax-+91 22 6159 6160  
Website- [www.bpwealth.com](http://www.bpwealth.com)

**Registered Office:**

24/26, 1st Floor, Cama Building,  
Dalal street, Fort,  
Mumbai-400001  
  
BP Equities Pvt. Ltd.  
CIN No: U67120MH1997PTC107392